

**BALDOR • RELIANCE**

---

# Customer information packet

## HBEM3708T

52M 6P TEFC HOR 215T

Class - None

Division - Not Applicable

## Specifications

Enclosure	TEFC
Frame	215T
Frame Material	Steel
Frequency	60.00 Hz
Haz Area Class and Group	None
Haz Area Division	Not Applicable
Motor Letter Type	Three Phase
Output @ Frequency	5.000 HP @ 60 HZ
Phase	3
Synchronous Speed @ Frequency	1200 RPM @ 60 HZ
Voltage @ Frequency	460.0 V @ 60 HZ 230.0 V @ 60 HZ
Agency Approvals	CURUSEEV NEMA PREMIUM WEEE
Ambient Temperature	40 °C
Auxiliary Box	NO AUXILLARY BOX
Auxiliary Box Lead Termination	None
Base Indicator	Rigid
Bearing Grease Type	Polyrex EM (-20F +300F)
Blower	None
Current @ Voltage	15.600 A @ 208.0 V 7.200 A @ 460.0 V 14.400 A @ 230.0 V
Design Code	A
Drip Cover	No Drip Cover
Duty Rating	CONT
Efficiency @ 100% Load	89.5 %
Electrically Isolated Bearing	Electrically Isolated Bearings
Feedback Device	NO FEEDBACK
Front Shaft Indicator	None
Heater Indicator	No Heater

## Part detail

Revision	F
Type	AC
Mech. spec.	37T556
Base	
Status	PRD/A
Elec. spec.	37WGQ067
Layout	37LYT556
Eff. date	02-03-2026
CD Diagram	CD0005
Poles	06
Leads	9#14
Proprietary	False
Created date	01-05-2022

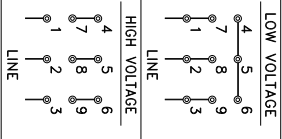
High Voltage Full Load Amps	7.2 a
Insulation Class	H
Inverter Code	Inverter Ready
KVA Code	K
Lifting Lugs	Standard Lifting Lugs
Locked Bearing Indicator	No Locked Bearing
Max Speed	1800 rpm
Motor Lead Quantity/Wire Size	9 @ 14 AWG
Motor Lead Termination	Flying Leads
Motor Standards	NEMA
Motor Type	3752M
Mounting Arrangement	F1
Number of Poles	6
Overall Length	20.52 IN
Power Factor	71
Product Family	General Purpose
Pulley End Bearing Type	Sealed Bearing
Pulley Face Code	Standard
Pulley Shaft Indicator	Standard
Rodent Screen	None
RoHS Status	ROHS COMPLIANT
Service Factor	1.15
Shaft Diameter	1.375 IN
Shaft Ground Indicator	No Shaft Grounding
Shaft Rotation	Reversible
Shaft Slinger Indicator	No Slinger
Speed	1165 rpm
Speed Code	Single Speed
Starting Method	Direct on line
Thermal Device - Bearing	None
Thermal Device - Winding	None
Vibration Sensor Indicator	No Vibration Sensor
Winding Thermal 1	None
Winding Thermal 2	None

**BALDOR • RELIANCE**  
**CRITICAL COOLING**

<b>CAT#</b>	HBEM3708T	<b>WGT</b>	185	<b>LBS</b>
<b>SPEC</b>	3715560067G1	<b>ENCL</b>	TEFC	
<b>SER#</b>	***	<b>CC</b>	070A	<b>IP</b> 54
<b>HP</b>	5	<b>INS</b>	8/4	<b>NEQA</b>
<b>VOLTS</b>	230/460	<b>INS</b>	8/4	<b>MONEFF</b>
<b>AMPS</b>	14.4/7.2	<b>PF</b>	71	<b>%</b>
<b>RATING</b>	40C AMB-CONT			
<b>RPM</b>	1165	<b>MAX RPM</b>	1800	
<b>FRAME</b>	21ST	<b>HZ</b>	60	<b>CODE</b>
<b>SER.F.</b>	1.15	<b>SF AMP</b>	16.6/8.3	<b>PH</b> 3
<b>BEARINGS</b>	DE 6307	<b>ODE</b>	6206	<b>YR</b> ***
<b>LUBE</b>	POLYREX EM			



<b>INW. TYPE:</b>	WPMW	<b>HP</b>	60	<b>TO 90</b>	HZ(1.5:1)
<b>WK</b>	1.2900	<b>LBF</b>	CT 6	<b>TO 60</b>	HZ(10:1)
<b>SL. HZ</b>	1.75	<b>WT</b>	3	<b>TO 60</b>	HZ(20:1)



T\*STAT { 0 J }  
LEADS { 0 J }  
(WHEN RED D.)  
INTERCHANGE ANY TWO LINE  
LEADS TO REV. ROTATION.

**NEMA ENERGY**  
**Premium** **90** **us**  
E46145

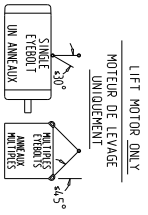
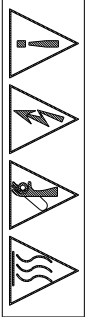


ABB MOTORS AND MECHANICAL INC.  
5771 R.S. BOREHAM JR. ST. FORT SMITH, AR.  
MFG IN U.S.A.

**AC Induction Motor Performance Data**

Record # 87458

Typical performance - not guaranteed values

Winding: 37WGQ067-R002		Type: 3752M	Enclosure: TEFC	
<b>Nameplate Data</b>			<b>460 V, 60 Hz: High Voltage Connection</b>	
Rated Output (HP)	5	Full Load Torque	22.48 LB-FT	
Volts	230/460	Start Configuration	direct on line	
Full Load Amps	14.4/7.2	Breakdown Torque	80.1 LB-FT	
R.P.M.	1165	Pull-up Torque	51.2 LB-FT	
Hz	60 Phase	3	Locked-rotor Torque	55.8 LB-FT
NEMA Design Code	A KVA Code	K	Starting Current	54.4 A
Service Factor (S.F.)	1.15	No-load Current	3.98 A	
NEMA Nom. Eff.	89.5 Power Factor	71	Line-line Res. @ 25°C	1.65 Ω
Rating - Duty	40C AMB-CONT		Temp. Rise @ Rated Load	59°C
S.F. Amps			Temp. Rise @ S.F. Load	72°C
			Locked-rotor Power Factor	21.9
			Rotor inertia	1.29 lb-ft <sup>2</sup>

**Load Characteristics 460 V, 60 Hz, 5 HP**

% of Rated Load	25	50	75	100	125	150	S.F.
Power Factor	33	52	64	70	74	76	72
Efficiency	84.4	89.3	90.2	89.7	88.6	87	89
Speed	1192	1183	1175	1165	1154	1141	1158
Line amperes	4.28	5.07	6.08	7.39	8.87	10.6	8.28

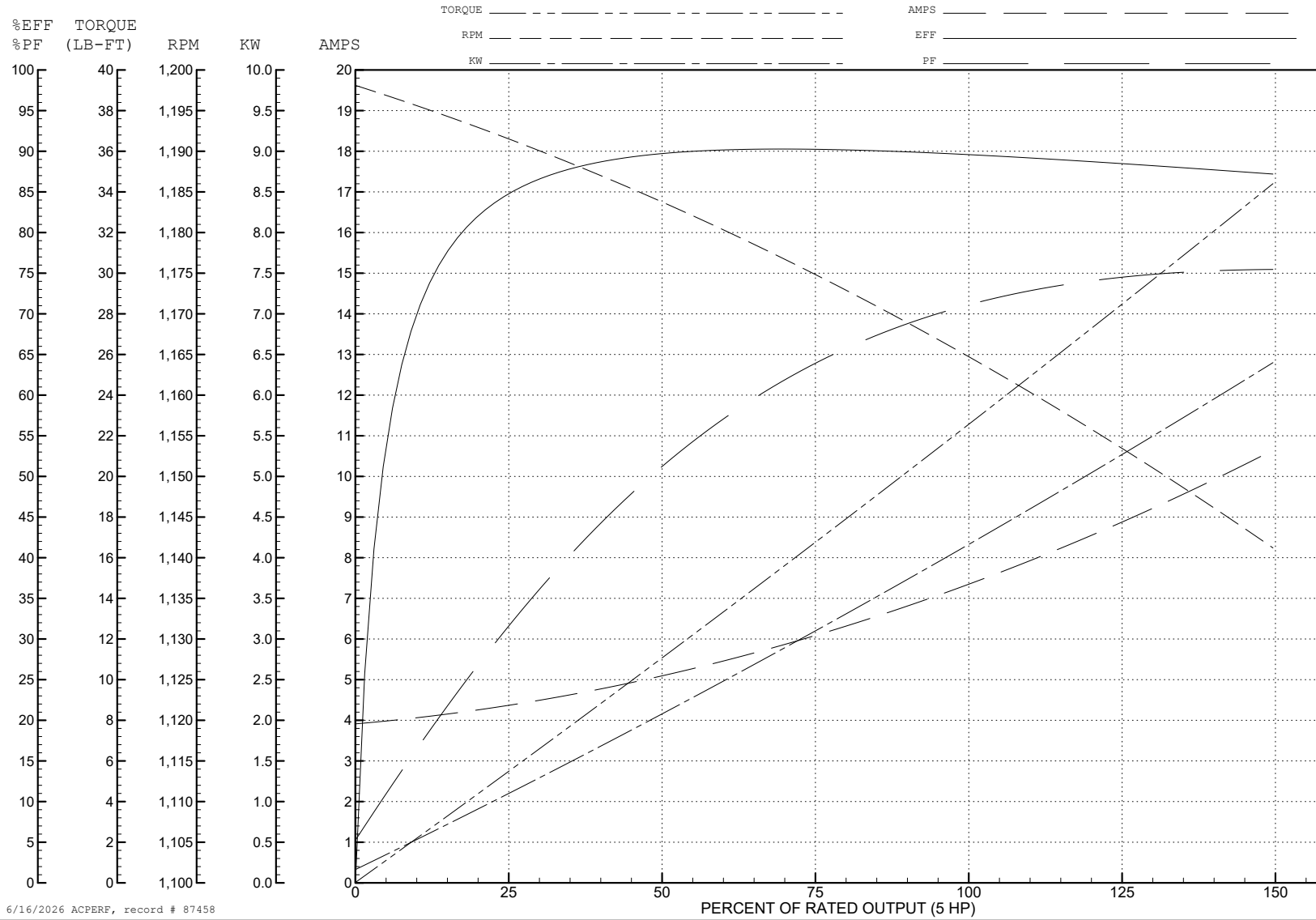
ABB Motors and Mechanical Inc.

WINDING # 37WGQ067

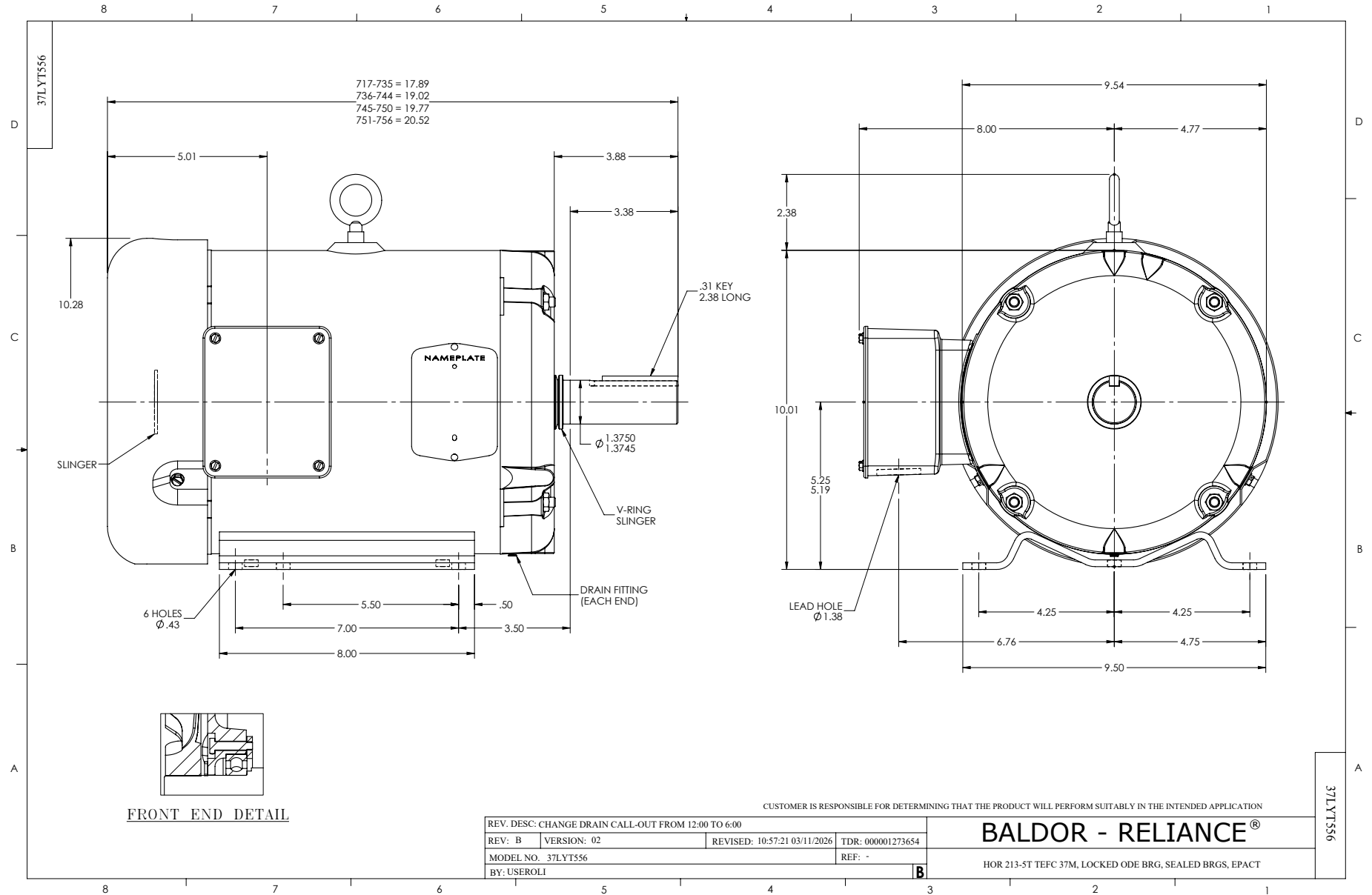
Typical performance - not guaranteed values.

5 HP 3 PH 60 HZ 1165 RPM 460 V 3752M

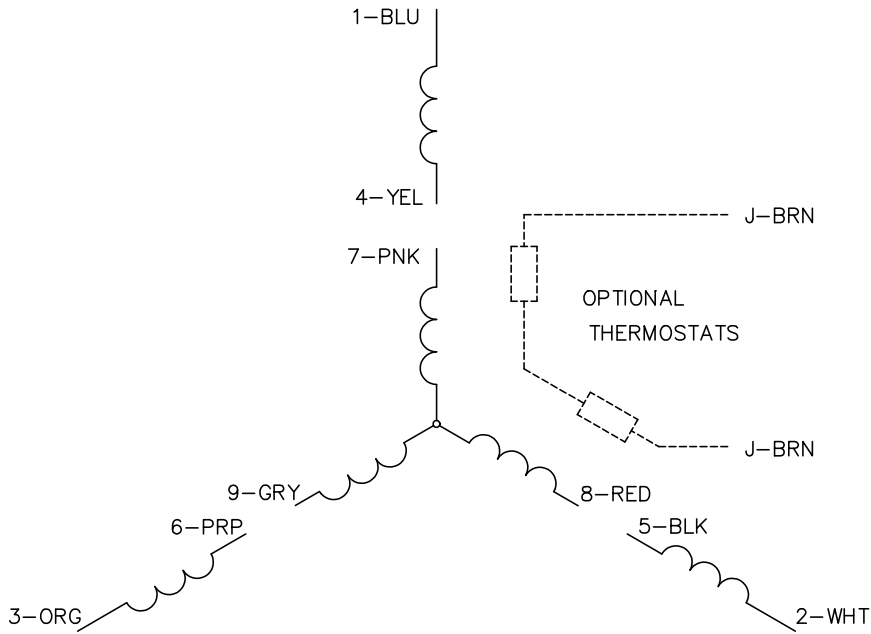
TORQUES (LB-FT): PO=80.1 PU=51.2 LR=55.8 LRA=54.4



6/16/2026 ACPERF, record # 87458



CD0005

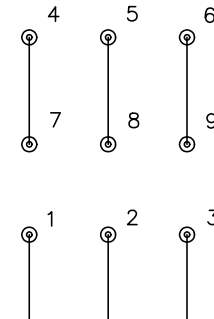


LOW VOLTAGE  
(2Y)



LINE

HIGH VOLTAGE  
(1Y)



LINE

NOTES:

1. INTERCHANGE ANY TWO LINE LEADS TO REVERSE ROTATION.
2. OPTIONAL THERMOSTATS ARE PROVIDED WHEN SPECIFIED.
3. ACTUAL NUMBER OF INTERNAL PARALLEL CIRCUITS MAY BE A MULTIPLE OF THOSE SHOWN ABOVE.
4. LEAD COLORS ARE OPTIONAL. LEADS MUST ALWAYS BE NUMBERED AS SHOWN.

CD0005

REV. DESC: REVISE TO SHOW OPTIONAL COLORS

REV. LTR: E BY: JLP REVISED: 01/19/99 10:15 TDR: 0171435

500000

FILE: AAA00005140

MDL: -

MTL: -

BALDOR ELECTRIC Co.

3PH, DV, 9 LEADS