

BALDOR • RELIANCE

Customer information packet

HBEM3665T

42M 4P TEFC HOR 184T

Class - None

Division - Not Applicable

Specifications

Enclosure	TEFC
Frame	184T
Frame Material	Iron
Frequency	60.00 Hz
Haz Area Class and Group	None
Haz Area Division	Not Applicable
Motor Letter Type	Three Phase
Output @ Frequency	5.000 HP @ 60 HZ
Phase	3
Synchronous Speed @ Frequency	1800 RPM @ 60 HZ
Voltage @ Frequency	460.0 V @ 60 HZ 230.0 V @ 60 HZ
Agency Approvals	CURUSEEV NEMA PREMIUM WEEE
Ambient Temperature	40 °C
Auxillary Box	No Auxillary Box
Auxillary Box Lead Termination	None
Base Indicator	Rigid
Bearing Grease Type	Polyrex EM (-20F +300F)
Blower	None
Current @ Voltage	14.000 A @ 208.0 V 6.600 A @ 460.0 V 13.200 A @ 230.0 V
Design Code	B
Drip Cover	No Drip Cover
Duty Rating	CONT
Efficiency @ 100% Load	89.5 %
Electrically Isolated Bearing	Electrically Isolated Bearings
Feedback Device	NO FEEDBACK
Front Shaft Indicator	None
Heater Indicator	No Heater

Part detail

Revision	D
Type	AC
Mech. spec.	06L568
Base	
Status	PRD/A
Elec. spec.	06WGX182
Layout	06LYL568
Eff. date	08-02-2023
CD Diagram	CD0005
Poles	04
Leads	9#16
Proprietary	False
Created date	01-05-2022

High Voltage Full Load Amps	6.6 a
Insulation Class	H
Inverter Code	Not Inverter
KVA Code	J
Lifting Lugs	Standard Lifting Lugs
Locked Bearing Indicator	No Locked Bearing
Max Speed	2700 rpm
Motor Lead Quantity/Wire Size	9 @ 16 AWG
Motor Lead Termination	Flying Leads
Motor Standards	NEMA
Motor Type	0642M
Mounting Arrangement	F1
Number of Poles	4
Overall Length	15.23 IN
Power Factor	79
Product Family	General Purpose
Pulley End Bearing Type	Sealed Bearing
Pulley Face Code	Standard
Pulley Shaft Indicator	Standard
Rodent Screen	None
RoHS Status	ROHS COMPLIANT
Service Factor	1.15
Shaft Diameter	1.125 IN
Shaft Ground Indicator	No Shaft Grounding
Shaft Rotation	Reversible
Shaft Slinger Indicator	No Slinger
Speed	1750 rpm
Speed Code	Single Speed
Starting Method	Direct on line
Thermal Device - Bearing	None
Thermal Device - Winding	None
Vibration Sensor Indicator	No Vibration Sensor
Winding Thermal 1	None
Winding Thermal 2	None

Nameplate

NP4312A01A01L

CAT #	HBEM3665T			SER				CC	010A	WGT		LBS	
SPEC	06L568X182G1			RATING	40C AMB-CONT								
HZ	VOLTS		AMPS	RPM	HP	SF	NEMA NOM. EFF						
60	230/460		13.2/6.6			1750	5HP	1.15	89.5				
PH	3	CL	H	CODE	J	DES	B	ENCL	TEFC	IP	54	PF	79 %
DE BRG	6206			ODE BRG	6205			FRAME	184T				
INV TYPE:	VPWM	SL HZ	1.67	CHP	60	TO	90	1.5:1					
WK2	0.39	LB FT2	MAX RPM	2700	CT	6	TO	60	10:1				
	6.3/3.15			VT	3	TO	60	20:1					
SFA 15/7.5													

YR

AC Induction Motor Performance Data

Record # 56808

Typical performance - not guaranteed values

Winding: 06WGX182-R015		Type: 0642M	Enclosure: TEFC	
Nameplate Data			460 V, 60 Hz: High Voltage Connection	
Rated Output (HP)	5	Full Load Torque	15 LB-FT	
Volts	230/460	Start Configuration	direct on line	
Full Load Amps	13.2/6.6	Breakdown Torque	53.9 LB-FT	
R.P.M.	1750	Pull-up Torque	22.4 LB-FT	
Hz	60 Phase	Locked-rotor Torque	31.8 LB-FT	
NEMA Design Code	B KVA Code	Starting Current	46.6 A	
Service Factor (S.F.)	1.15	No-load Current	3.02 A	
NEMA Nom. Eff.	89.5 Power Factor	Line-line Res. @ 25°C	2.63 Ω	
Rating - Duty	40C AMB-CONT	Temp. Rise @ Rated Load	53°C	
S.F. Amps		Temp. Rise @ S.F. Load	65°C	
		Locked-rotor Power Factor	40.5	
		Rotor inertia	0.391 LB-FT ²	

Load Characteristics 460 V, 60 Hz, 5 HP

% of Rated Load	25	50	75	100	125	150	S.F.
Power Factor	41	63	75	81	84	85	83
Efficiency	85.2	89.8	90.4	89.8	88.4	86.9	89
Speed	1789	1777	1765	1752	1737	1721	1743
Line amperes	3.35	4.14	5.21	6.45	7.91	9.47	7.33

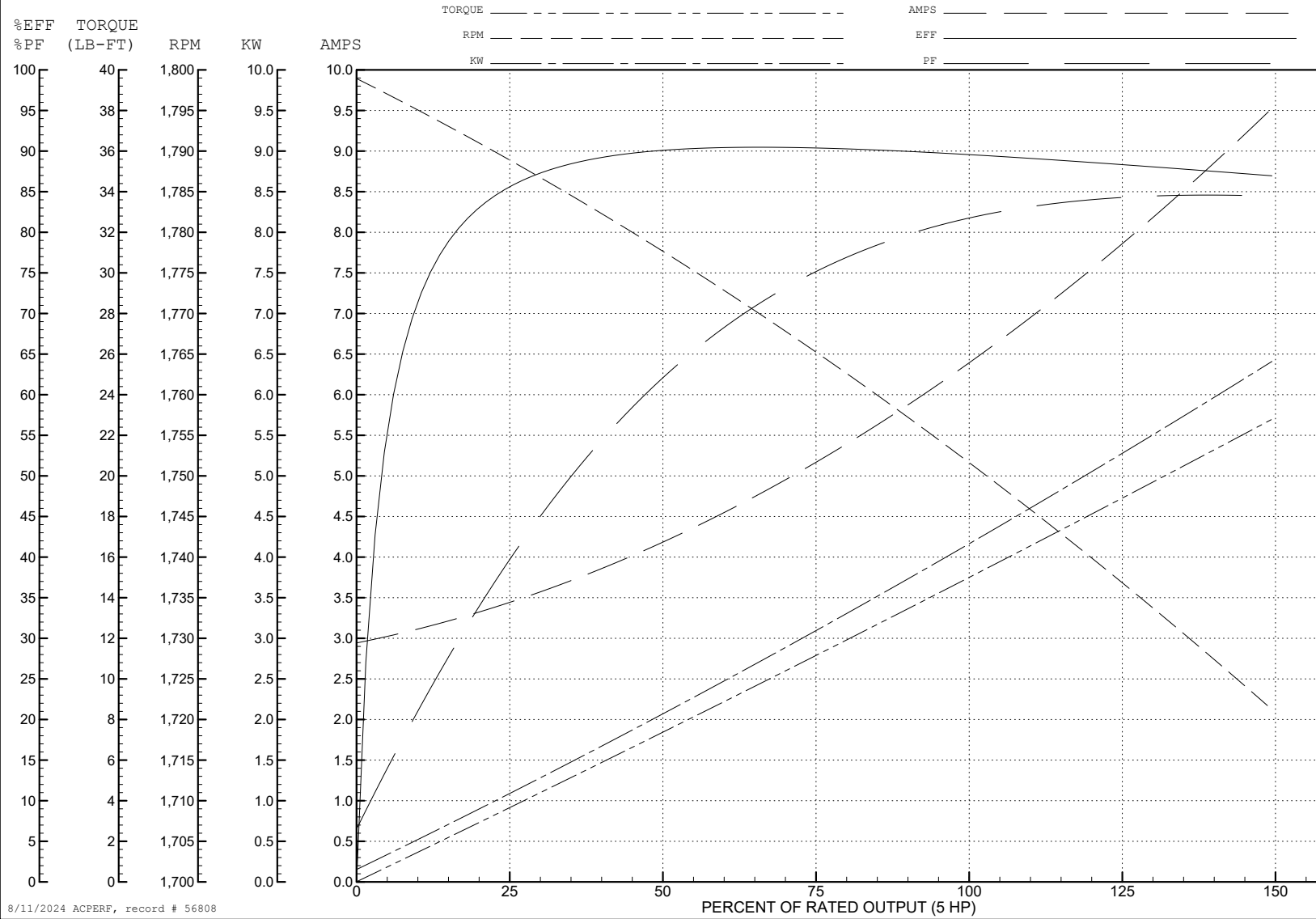
ABB Motors and Mechanical Inc.

WINDING # 06WGX182

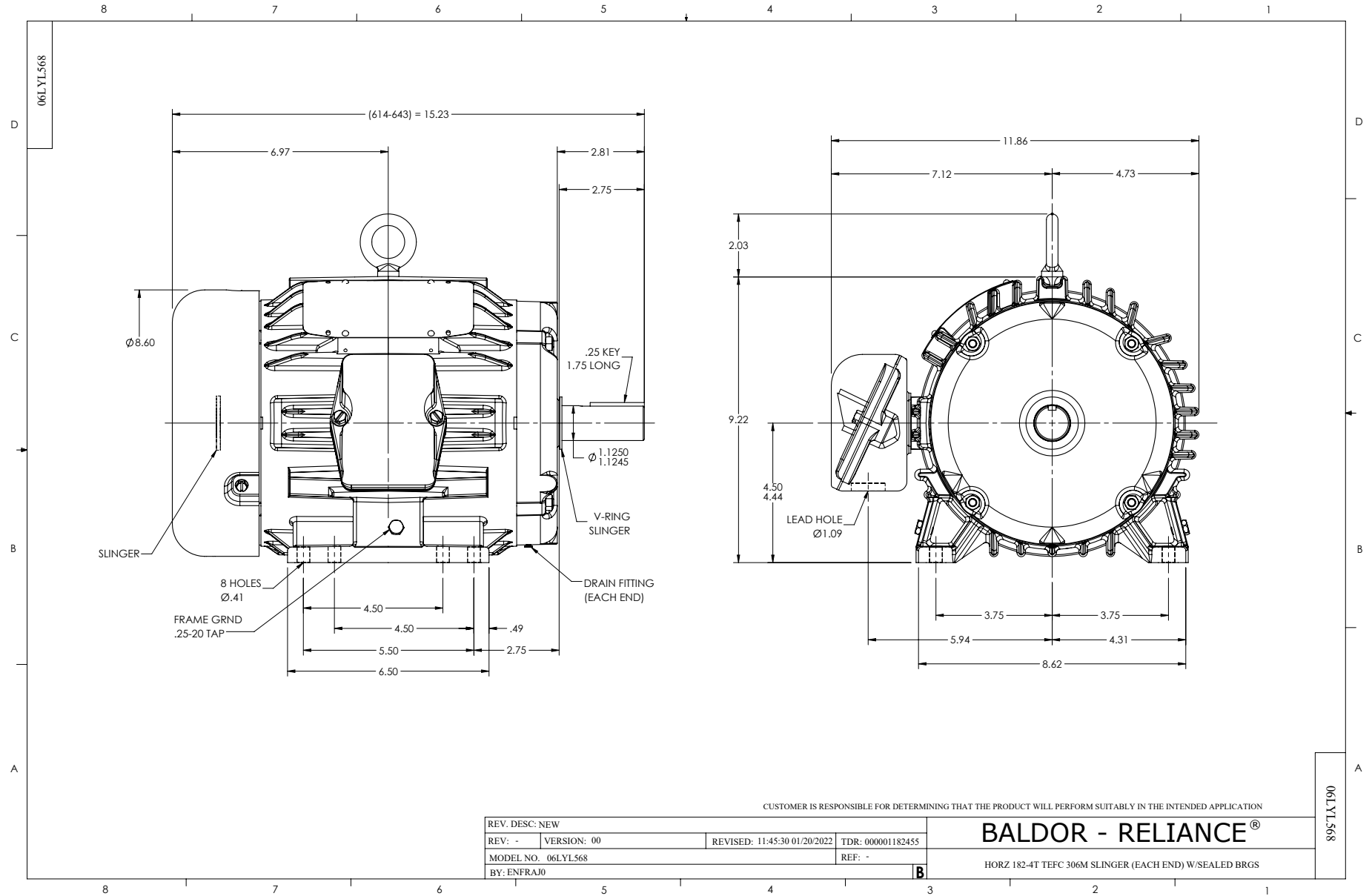
5 HP 3 PH 60 HZ 1750 RPM 460 V 0642M

Typical performance - not guaranteed values.

TORQUES (LB-FT): PO=53.9 PU=22.4 LR=31.8 LRA=46.6



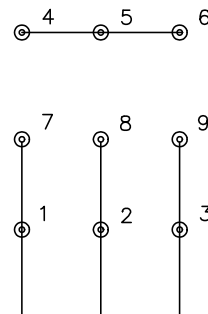
8/11/2024 ACPERF, record # 56808



CD0005



LOW VOLTAGE
(2Y)



LINE

HIGH VOLTAGE
(1Y)



LINE

NOTES:

1. INTERCHANGE ANY TWO LINE LEADS TO REVERSE ROTATION.
2. OPTIONAL THERMOSTATS ARE PROVIDED WHEN SPECIFIED.
3. ACTUAL NUMBER OF INTERNAL PARALLEL CIRCUITS MAY BE A MULTIPLE OF THOSE SHOWN ABOVE.
4. LEAD COLORS ARE OPTIONAL. LEADS MUST ALWAYS BE NUMBERED AS SHOWN.

CD0005

REV. DESC: REVISE TO SHOW OPTIONAL COLORS			
REV. LTR: E	BY: JLP	REVISED: 01/19/99 10:15	TDR: 0171435
S00000		FILE: AAA00005140	MDL: -
		MTL: -	

BALDOR ELECTRIC Co.

3PH, DV, 9 LEADS