

BALDOR • RELIANCE

Customer information packet

HBEM3611T

32M 4P TEFC HOR 182T

Class - None

Division - Not Applicable

Specifications

| | |
|--------------------------------|---|
| Enclosure | TEFC |
| Frame | 182T |
| Frame Material | Steel |
| Frequency | 60.00 Hz |
| Haz Area Class and Group | None |
| Haz Area Division | Not Applicable |
| Motor Letter Type | Three Phase |
| Output @ Frequency | 3.000 HP @ 60 HZ |
| Phase | 3 |
| Synchronous Speed @ Frequency | 1800 RPM @ 60 HZ |
| Voltage @ Frequency | 460.0 V @ 60 HZ 230.0 V @ 60 HZ |
| Agency Approvals | CURUSEEV NEMA PREMIUM WEEE |
| Ambient Temperature | 40 °C |
| Auxillary Box | No Auxillary Box |
| Auxillary Box Lead Termination | None |
| Base Indicator | Rigid |
| Bearing Grease Type | Polyrex EM (-20F +300F) |
| Blower | None |
| Current @ Voltage | 8.400 A @ 230.0 V 9.000 A @ 208.0 V 4.200 A @ 460.0 V |
| Design Code | B |
| Drip Cover | No Drip Cover |
| Duty Rating | CONT |
| Efficiency @ 100% Load | 89.5 % |
| Electrically Isolated Bearing | Electrically Isolated Bearings |
| Feedback Device | NO FEEDBACK |
| Front Shaft Indicator | None |
| Heater Indicator | No Heater |

Part detail

| | |
|--------------|------------|
| Revision | D |
| Type | AC |
| Mech. spec. | 36T429 |
| Base | |
| Status | PRD/A |
| Elec. spec. | 36WGS266 |
| Layout | 36LYT429 |
| Eff. date | 06-14-2024 |
| CD Diagram | CD0005 |
| Poles | 04 |
| Leads | 9#16 |
| Proprietary | False |
| Created date | 01-05-2022 |

| | |
|-------------------------------|---------------------|
| High Voltage Full Load Amps | 4.2 a |
| Insulation Class | H |
| Inverter Code | Inverter Ready |
| KVA Code | K |
| Lifting Lugs | No Lifting Lugs |
| Locked Bearing Indicator | No Locked Bearing |
| Max Speed | 2700 rpm |
| Motor Lead Quantity/Wire Size | 9 @ 16 AWG |
| Motor Lead Termination | Flying Leads |
| Motor Standards | NEMA |
| Motor Type | 3632M |
| Mounting Arrangement | F1 |
| Number of Poles | 4 |
| Overall Length | 16.54 IN |
| Power Factor | 75 |
| Product Family | General Purpose |
| Pulley End Bearing Type | Sealed Bearing |
| Pulley Face Code | Standard |
| Pulley Shaft Indicator | Standard |
| Rodent Screen | None |
| RoHS Status | ROHS COMPLIANT |
| Service Factor | 1.15 |
| Shaft Diameter | 1.125 IN |
| Shaft Ground Indicator | No Shaft Grounding |
| Shaft Rotation | Reversible |
| Shaft Slinger Indicator | No Slinger |
| Speed | 1760 rpm |
| Speed Code | Single Speed |
| Starting Method | Direct on line |
| Thermal Device - Bearing | None |
| Thermal Device - Winding | None |
| Vibration Sensor Indicator | No Vibration Sensor |
| Winding Thermal 1 | None |
| Winding Thermal 2 | None |

Nameplate

| NP4246A01A01 | | | | | | | | | |
|--------------------|------------------|----------------|------------|-----------------------|-----------|--------------|------------|---|--|
| CAT # | HBEM3611T | | | WGT | 73 | LBS | | | |
| SPEC | 36T429S266G1 | | | ENCL | TEFC | | | | |
| SER # | | | | CC | 010A | IP | 54 | | |
| HP | 3 | MAG CUR | | 4.6/2.3 | | | | | |
| VOLTS | 230/460 | | | NEMA NOM. EFF | | 89.5 | | | |
| AMPS | 8.4/4.2 | | | PF | 75 | | | | |
| RATING | 40C AMB-CONT | | | | | | | | |
| RPM | 1760 | | | MAX RPM | | 2700 | | | |
| FRAME | 182T | HZ | 60 | CODE | K | CLASS | H | | |
| SER.F. | 1.15 | SF AMP | 9.2/4.6 | | PH | 3 | DES | B | |
| DE | 6206 | | ODE | | 6205 | | | | |
| LUBRICATION | POLYREX EM | | | | | | | | |
| ID LOGO | INV TYPE: | VPWM | CHP | 60 | TO | 90 | 1.5:1 | | |
| ID LOGO | WK2 | 0.3 | CT | 6 | TO | 60 | 10:1 | | |
| ID LOGO | SL HZ | 1.33 | VT | 3 | TO | 60 | 20:1 | | |
| | | | | ID.ABB/BALDOR/ | | | | | |
| YR | | | | | | | | | |

AC Induction Motor Performance Data

Record # 35724

Typical performance - not guaranteed values

| Winding: 36WGS266-R002 | | Type: 3632M | Enclosure: TEFC |
|------------------------|-------------------|--|------------------------|
| Nameplate Data | | 460 V, 60 Hz: High Voltage Connection | |
| Rated Output (HP) | 3 | Full Load Torque | 8.8 LB-FT |
| Volts | 230/460 | Start Configuration | direct on line |
| Full Load Amps | 8.4/4.2 | Breakdown Torque | 37.6 LB-FT |
| R.P.M. | 1760 | Pull-up Torque | 15.2 LB-FT |
| Hz | 60 Phase | Locked-rotor Torque | 21.7 LB-FT |
| NEMA Design Code | B KVA Code | Starting Current | 32.7 A |
| Service Factor (S.F.) | 1.15 | No-load Current | 2.3 A |
| NEMA Nom. Eff. | 89.5 Power Factor | Line-line Res. @ 25°C | 3.81 Ω |
| Rating - Duty | 40C AMB-CONT | Temp. Rise @ Rated Load | 44°C |
| S.F. Amps | | Temp. Rise @ S.F. Load | 52°C |
| | | Locked-rotor Power Factor | 42.2 |
| | | Rotor inertia | 0.3 LB-FT ² |

Load Characteristics 460 V, 60 Hz, 3 HP

| % of Rated Load | 25 | 50 | 75 | 100 | 125 | 150 | S.F. |
|-----------------|------|------|------|------|------|------|------|
| Power Factor | 35 | 55 | 68 | 75 | 80 | 82 | 77 |
| Efficiency | 81.1 | 87.8 | 89.6 | 89.8 | 89.7 | 88.2 | 89.2 |
| Speed | 1791 | 1783 | 1773 | 1764 | 1753 | 1741 | 1755 |
| Line amperes | 2.47 | 2.85 | 3.43 | 4.09 | 4.89 | 5.78 | 4.63 |

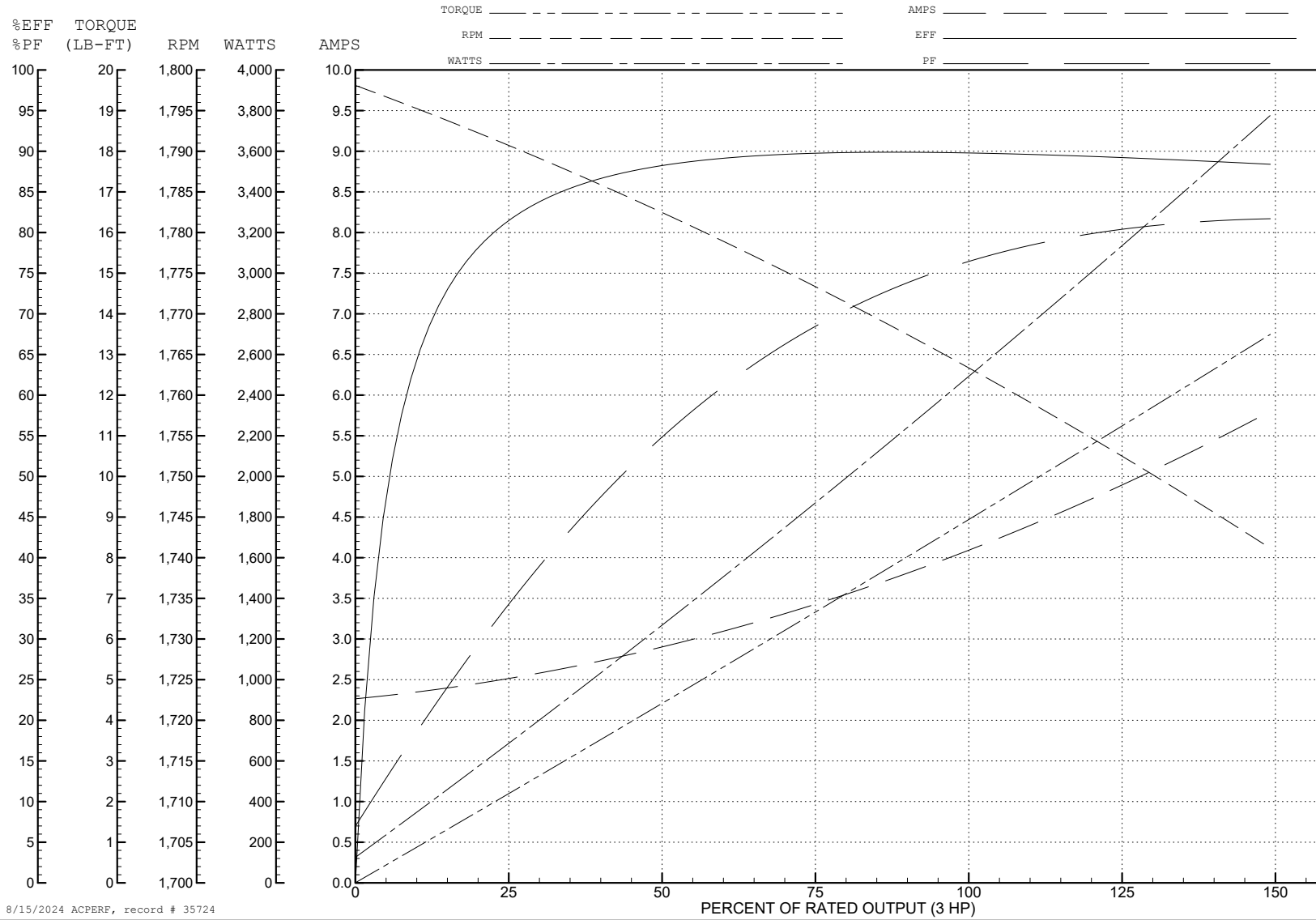
ABB Motors and Mechanical Inc.

WINDING # 36WGS266

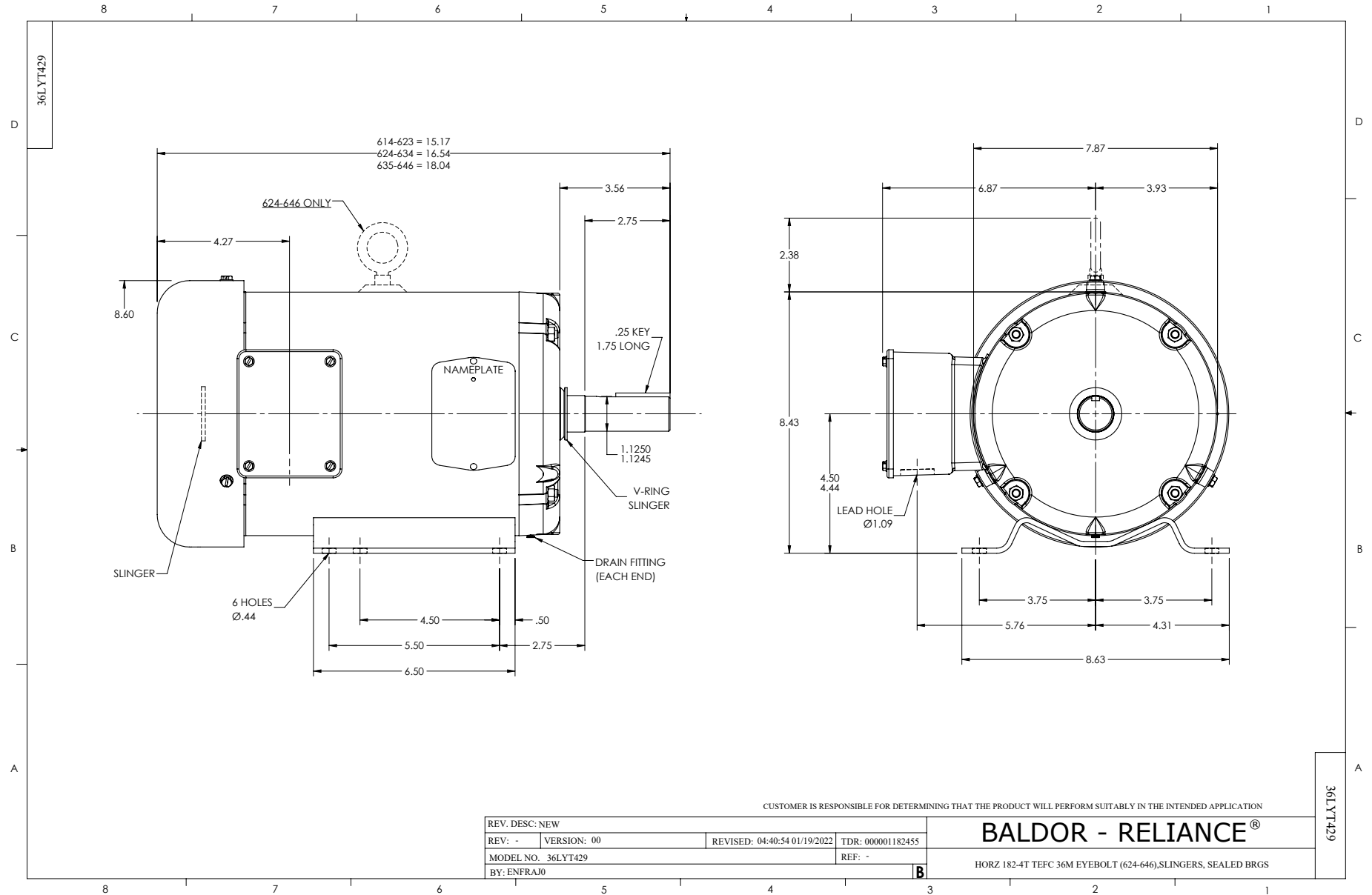
3 HP 3 PH 60 HZ 1760 RPM 460 V 3632M

Typical performance - not guaranteed values.

TORQUES (LB-FT): PO=37.6 PU=15.2 LR=21.7 LRA=32.7



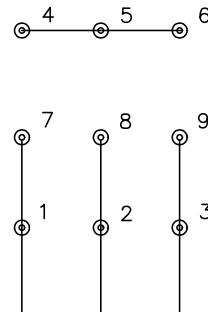
8/15/2024 ACPERF, record # 35724



CD0005

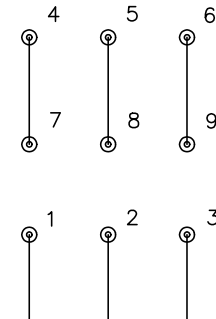


LOW VOLTAGE
(2Y)



LINE

HIGH VOLTAGE
(1Y)



LINE

NOTES:

1. INTERCHANGE ANY TWO LINE LEADS TO REVERSE ROTATION.
2. OPTIONAL THERMOSTATS ARE PROVIDED WHEN SPECIFIED.
3. ACTUAL NUMBER OF INTERNAL PARALLEL CIRCUITS MAY BE A MULTIPLE OF THOSE SHOWN ABOVE.
4. LEAD COLORS ARE OPTIONAL. LEADS MUST ALWAYS BE NUMBERED AS SHOWN.

CD0005

| | | | |
|---|---------|-------------------------|--------------|
| REV. DESC: REVISE TO SHOW OPTIONAL COLORS | | | |
| REV. LTR: E | BY: JLP | REVISED: 01/19/99 10:15 | TDR: 0171435 |
| S00000 | | FILE: AAA00005140 | MDL: - |
| | | MTL: - | |

BALDOR ELECTRIC Co.

3PH, DV, 9 LEADS