



---

# Customer information packet

## HBEM3582T

1HP, 1760RPM, 3PH, 60HZ, 145T, 0520M, TEFC, F1

Class - None

Division - Not Applicable

## Specifications

Enclosure	TEFC
Frame	145T
Frame Material	Iron
Frequency	60.00 Hz
Haz Area Class and Group	None
Haz Area Division	Not Applicable
Motor Letter Type	Three Phase
Output @ Frequency	1.000 HP @ 60 HZ
Phase	3
Synchronous Speed @ Frequency	1800 RPM @ 60 HZ
Voltage @ Frequency	460.0 V @ 60 HZ 230.0 V @ 60 HZ
Agency Approvals	CURUSEEV NEMA PREMIUM WEEE
Ambient Temperature	40 °C
Auxiliary Box	NO AUXILLARY BOX
Auxiliary Box Lead Termination	None
Base Indicator	Rigid
Bearing Grease Type	Polyrex EM (-20F +300F)
Blower	None
Current @ Voltage	3.200 A @ 208.0 V 3.260 A @ 230.0 V 1.630 A @ 460.0 V
Design Code	B
Drip Cover	No Drip Cover
Duty Rating	CONT
Efficiency @ 100% Load	85.5 %
Electrically Isolated Bearing	Electrically Isolated Bearings
Feedback Device	NO FEEDBACK
Front Shaft Indicator	None
Heater Indicator	No Heater

## Part detail

Revision	C
Type	AC
Mech. spec.	05H396
Base	
Status	PRD/A
Elec. spec.	05WGX508
Layout	05LYH396
Eff. date	12-06-2024
CD Diagram	CD0005
Poles	04
Leads	9#18
Proprietary	False
Created date	05-01-2023

High Voltage Full Load Amps	1.6 a
Insulation Class	H
Inverter Code	Inverter Ready
KVA Code	N
Lifting Lugs	Standard Lifting Lugs
Locked Bearing Indicator	No Locked Bearing
Max Speed	2700 rpm
Motor Lead Quantity/Wire Size	9 @ 18 AWG
Motor Lead Termination	Flying Leads
Motor Standards	NEMA
Motor Type	0520M
Mounting Arrangement	F1
Number of Poles	4
Overall Length	12.54 IN
Power Factor	67
Product Family	General Purpose
Pulley End Bearing Type	Sealed Bearing
Pulley Face Code	Standard
Pulley Shaft Indicator	Standard
Rodent Screen	None
RoHS Status	ROHS COMPLIANT
Service Factor	1.15
Shaft Diameter	0.875 IN
Shaft Ground Indicator	No Shaft Grounding
Shaft Rotation	Reversible
Shaft Slinger Indicator	No Slinger
Speed	1760 rpm
Speed Code	Single Speed
Starting Method	Direct on line
Thermal Device - Bearing	None
Thermal Device - Winding	None
Vibration Sensor Indicator	No Vibration Sensor
Winding Thermal 1	None
Winding Thermal 2	None

**Nameplate**

**NP4312A01A01L**

<b>CAT #</b>	HBEM3582T		<b>SER</b>			<b>CC</b>	010A	<b>WGT</b>	56	<b>LBS</b>					
<b>SPEC</b>	05H396X508G2		<b>RATING</b>	40C AMB-CONT											
<b>HZ</b>	<b>VOLTS</b>		<b>AMPS</b>		<b>RPM</b>	<b>HP</b>	<b>SF</b>	<b>NEMA NOM. EFF</b>							
60	230/460		3.26/1.63		1760	1HP	1.15	85.5							
<b>PH</b>	3	<b>CL</b>	H	<b>CODE</b>	N	<b>DES</b>	B	<b>ENCL</b>	TEFC	<b>IP</b>	54	<b>PF</b>	67	<b>%</b>	
<b>DE BRG</b>	6205		<b>ODE BRG</b>	6203		<b>FRAME</b>	145T								
<b>INV TYPE:</b>	<b>VPWM</b>		<b>SL HZ</b>	1.3	<b>CHP</b>	60	<b>TO</b>	90	1.5:1						
<b>WK2</b>	0.144		<b>LB FT2</b>	<b>MAX RPM</b>	2700	<b>CT</b>	3	<b>TO</b>	60	20:1					
	2.4/1.2		<b>VT</b>	3	<b>TO</b>	60	20:1								
SFA 3.52/1.76															

**YR**

**AC Induction Motor Performance Data**

Record # 92048

Typical performance - not guaranteed values

Winding: 05WGX091-R016		Type: 0524M		Enclosure: TEFC			
<b>Nameplate Data</b>			<b>460 V, 60 Hz: High Voltage Connection</b>				
Rated Output (HP)	1	Full Load Torque	4.53 LB-FT				
Volts	230/460	Start Configuration	direct on line				
Full Load Amps	3.4/1.7	Breakdown Torque	14.6 LB-FT				
R.P.M.	1155	Pull-up Torque	11.2 LB-FT				
Hz	60 Phase	3	Locked-rotor Torque	12.1 LB-FT			
NEMA Design Code	B	KVA Code	K	Starting Current	10.2 A		
Service Factor (S.F.)	1.15		No-load Current	1.16 A			
NEMA Nom. Eff.	82.5	Power Factor	65	Line-line Res. @ 25°C	16 Ω		
Rating - Duty	40C AMB-CONT		Temp. Rise @ Rated Load	33°C			
S.F. Amps	3.8/1.9		Temp. Rise @ S.F. Load	39°C			
			Locked-rotor Power Factor	42.2			
			Rotor inertia	0.143 lb-ft <sup>2</sup>			

**Load Characteristics 460 V, 60 Hz, 1 HP**

% of Rated Load	25	50	75	100	125	150	S.F.
Power Factor	27	44	56	65	71	74	69
Efficiency	71.5	80.7	83.3	83.5	82.4	80.5	82.8
Speed	1191	1181	1170	1158	1144	1128	1150
Line amperes	1.19	1.31	1.49	1.72	2	2.34	1.89

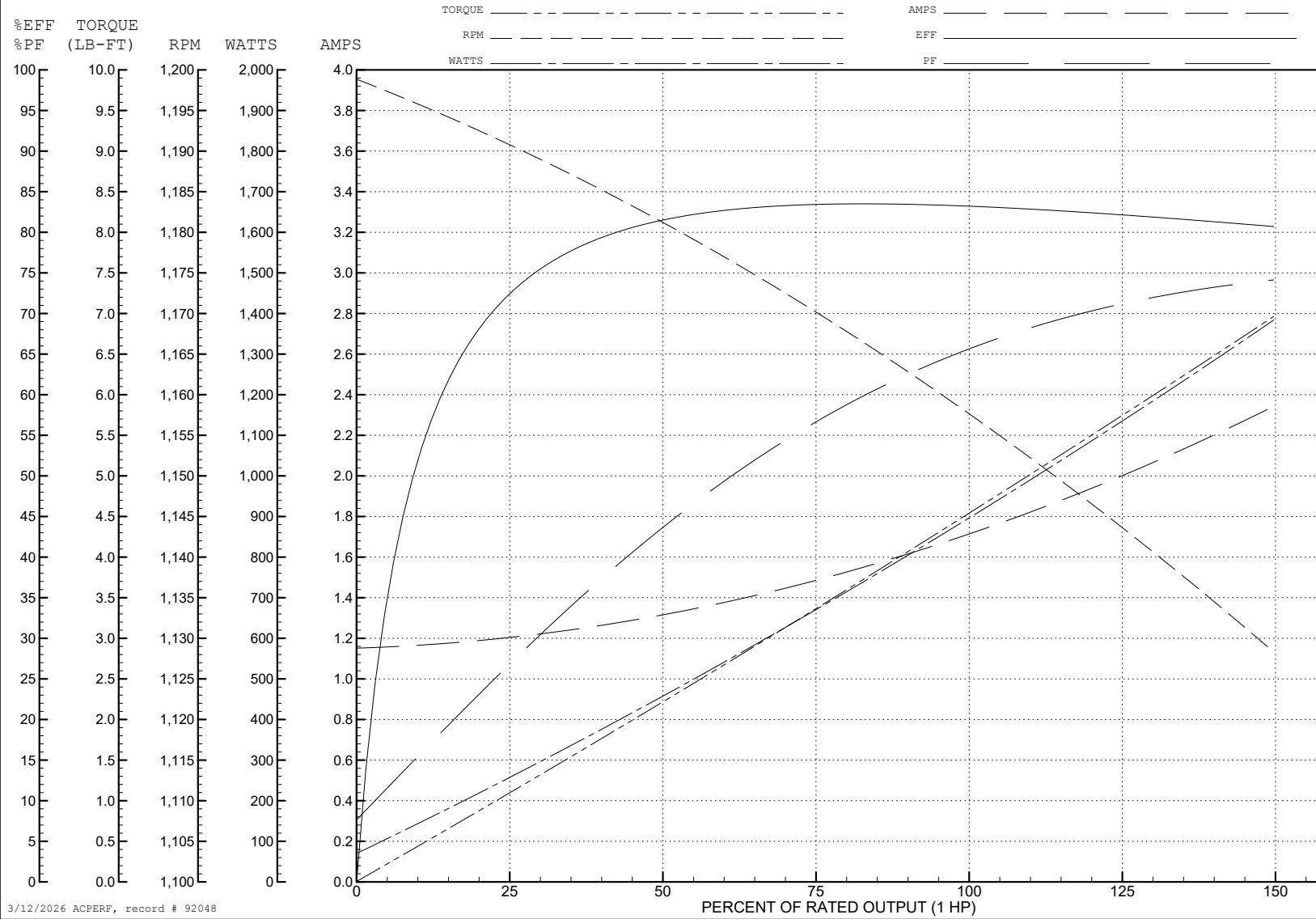
ABB Motors and Mechanical Inc.

WINDING # 05WGX091

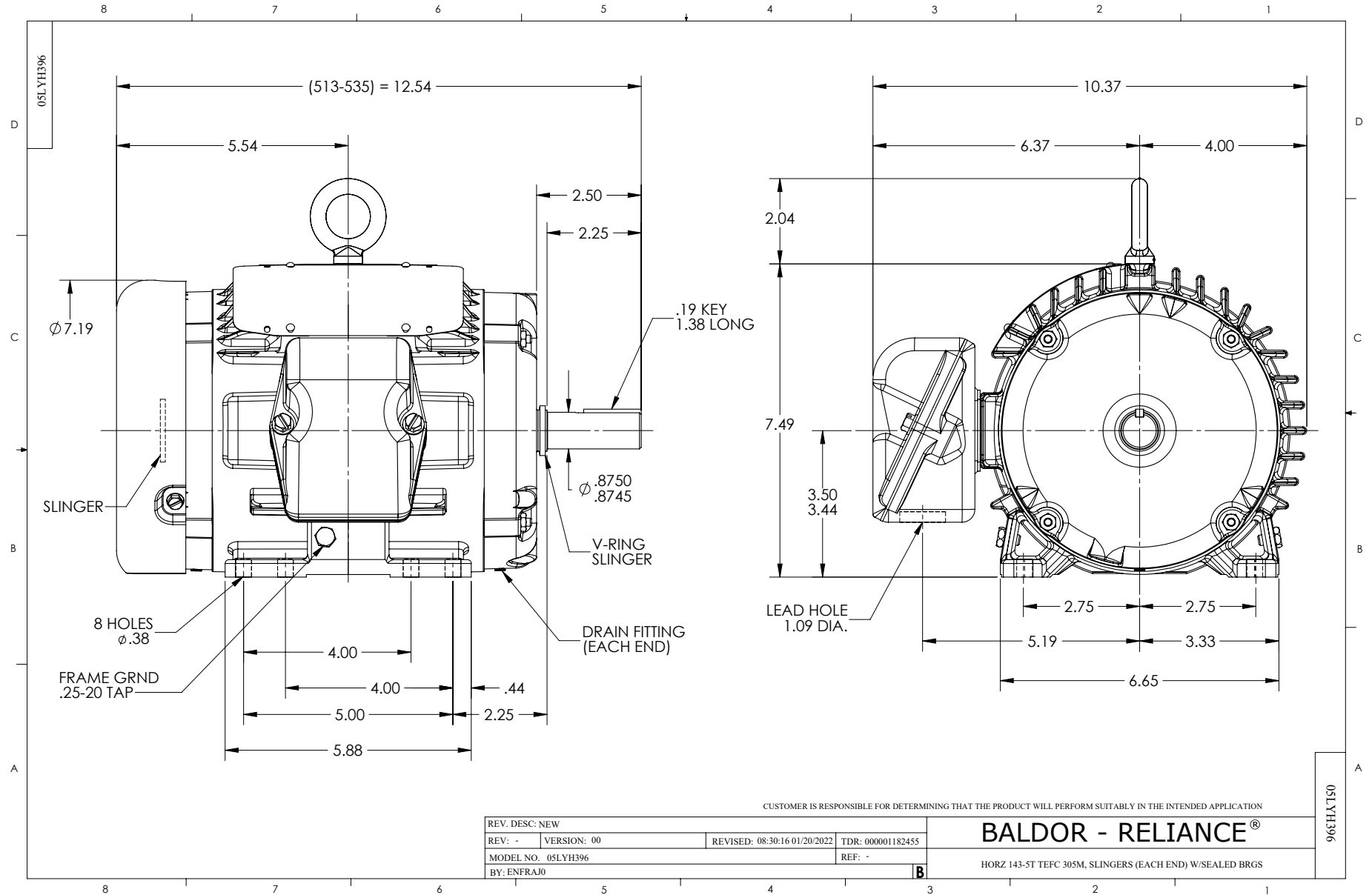
Typical performance - not guaranteed values.

1 HP 3 PH 60 HZ 1155 RPM 460 V 0524M

TORQUES (LB-FT): PO=14.6 PU=11.2 LR=12.1 LRA=10.2



3/12/2026 ACPERF, record # 92048



CD0005



LOW VOLTAGE  
(2Y)



LINE

HIGH VOLTAGE  
(1Y)



LINE

NOTES:

1. INTERCHANGE ANY TWO LINE LEADS TO REVERSE ROTATION.
2. OPTIONAL THERMOSTATS ARE PROVIDED WHEN SPECIFIED.
3. ACTUAL NUMBER OF INTERNAL PARALLEL CIRCUITS MAY BE A MULTIPLE OF THOSE SHOWN ABOVE.
4. LEAD COLORS ARE OPTIONAL. LEADS MUST ALWAYS BE NUMBERED AS SHOWN.

CD0005

REV. DESC: REVISE TO SHOW OPTIONAL COLORS			
REV. LTR: E	BY: JLP	REVISED: 01/19/99 10:15	TDR: 0171435
S00000		FILE: AAA00005140	MDL: -
		MTL: -	

**BALDOR ELECTRIC Co.**

3PH, DV, 9 LEADS