

**BALDOR • RELIANCE**

---

# Customer information packet

## HBEM2276T

54M 6P TEFC HOR 254T

Class - None

Division - Not Applicable

## Specifications

|                                |  |
|--------------------------------|--|
| Enclosure                      | TEFC   |
| Frame                          | 254T   |
| Frame Material                 | Iron   |
| Frequency                      | 60.00 Hz   |
| Haz Area Class and Group       | None   |
| Haz Area Division              | Not Applicable   |
| Motor Letter Type              | Three Phase  |
| Output @ Frequency             | 7.500 HP @ 60 HZ   |
| Phase                          | 3  |
| Synchronous Speed @ Frequency  | 1200 RPM @ 60 HZ   |
| Voltage @ Frequency            | 460.0 V @ 60 HZ<br>230.0 V @ 60 HZ                             |
| Agency Approvals               | CURUSEEV<br>NEMA PREMIUM<br>WEEE                               |
| Ambient Temperature            | 40 °C  |
| Auxillary Box                  | No Auxillary Box   |
| Auxillary Box Lead Termination | None   |
| Base Indicator                 | Rigid  |
| Bearing Grease Type            | Polyrex EM (-20F +300F)  |
| Blower                         | None   |
| Current @ Voltage              | 22.000 A @ 230.0 V<br>23.000 A @ 208.0 V<br>11.000 A @ 460.0 V |
| Design Code                    | A  |
| Drip Cover                     | No Drip Cover  |
| Duty Rating                    | CONT   |
| Efficiency @ 100% Load         | 91.0 %   |
| Electrically Isolated Bearing  | Electrically Isolated Bearings                                 |
| Feedback Device                | NO FEEDBACK  |
| Front Shaft Indicator          | None   |
| Heater Indicator               | No Heater  |

## Part detail

|              |            |
|--------------|------------|
| Revision     | F          |
| Type         | AC         |
| Mech. spec.  | 09T115     |
| Base         |            |
| Status       | PRD/A      |
| Elec. spec.  | 09WGT118   |
| Layout       | 09LYT115   |
| Eff. date    | 11-14-2023 |
| CD Diagram   | CD0005     |
| Poles        | 06         |
| Leads        | 9#12       |
| Proprietary  | False      |
| Created date | 01-06-2022 |

|                               |                       |
|-------------------------------|-----------------------|
| High Voltage Full Load Amps   | 11.0 a                |
| Insulation Class              | H                     |
| Inverter Code                 | Inverter Ready        |
| KVA Code                      | J                     |
| Lifting Lugs                  | Standard Lifting Lugs |
| Locked Bearing Indicator      | Locked Bearing        |
| Max Speed                     | 1800 rpm              |
| Motor Lead Quantity/Wire Size | 9 @ 12 AWG            |
| Motor Lead Termination        | Flying Leads          |
| Motor Standards               | NEMA                  |
| Motor Type                    | 0954M                 |
| Mounting Arrangement          | F1                    |
| Number of Poles               | 6                     |
| Overall Length                | 23.36 IN              |
| Power Factor                  | 70                    |
| Product Family                | General Purpose       |
| Pulley End Bearing Type       | Sealed Bearing        |
| Pulley Face Code              | Standard              |
| Pulley Shaft Indicator        | Standard              |
| Rodent Screen                 | None                  |
| RoHS Status                   | ROHS COMPLIANT        |
| Service Factor                | 1.15                  |
| Shaft Diameter                | 1.625 IN              |
| Shaft Ground Indicator        | No Shaft Grounding    |
| Shaft Rotation                | Reversible            |
| Shaft Slinger Indicator       | Shaft Slinger         |
| Speed                         | 1180 rpm              |
| Speed Code                    | Single Speed          |
| Starting Method               | Direct on line        |
| Thermal Device - Bearing      | None                  |
| Thermal Device - Winding      | None                  |
| Vibration Sensor Indicator    | No Vibration Sensor   |
| Winding Thermal 1             | None                  |
| Winding Thermal 2             | None                  |

**Nameplate**

**NP4312A01A01L**

|                  |              |               |                |              |           |                      |            |             |            |           |    |           |    |          |
|------------------|--------------|---------------|----------------|--------------|-----------|----------------------|------------|-------------|------------|-----------|----|-----------|----|----------|
| <b>CAT #</b>     | HBEM2276T    |               | <b>SER</b>     |              | <b>CC</b> | 010A                 | <b>WGT</b> |             | <b>LBS</b> |           |    |           |    |          |
| <b>SPEC</b>      | 09T115T118G1 |               | <b>RATING</b>  | 40C AMB-CONT |           |                      |            |             |            |           |    |           |    |          |
| <b>HZ</b>        | <b>VOLTS</b> | <b>AMPS</b>   | <b>RPM</b>     | <b>HP</b>    | <b>SF</b> | <b>NEMA NOM. EFF</b> |            |             |            |           |    |           |    |          |
| 60               | 230/460      | 22/11         |                |              | 1180      | 7.5                  | 1.15       | 91          |            |           |    |           |    |          |
| <b>PH</b>        | 3            | <b>CL</b>     | H              | <b>CODE</b>  | J         | <b>DES</b>           | A          | <b>ENCL</b> | TEFC       | <b>IP</b> | 54 | <b>PF</b> | 70 | <b>%</b> |
| <b>DE BRG</b>    | 6309         |               | <b>ODE BRG</b> | 6208         |           | <b>FRAME</b>         | 254T       |             |            |           |    |           |    |          |
| <b>INV TYPE:</b> | <b>VPWM</b>  | <b>SL HZ</b>  | 1              | <b>CHP</b>   | 60        | <b>TO</b>            | 90         | 1.5:1       |            |           |    |           |    |          |
| <b>WK2</b>       | 4.34         | <b>LB FT2</b> | <b>MAX RPM</b> | 1800         | <b>CT</b> | 6                    | <b>TO</b>  | 60          | 10:1       |           |    |           |    |          |
|                  | 12.2/6.1     | <b>VT</b>     | 3              | <b>TO</b>    | 60        | 20:1                 |            |             |            |           |    |           |    |          |
| SFA 24.6/12.3    |              |               |                |              |           |                      |            |             |            |           |    |           |    |          |
|                  |              |               |                |              |           |                      |            |             |            |           |    |           |    |          |
|                  |              |               |                |              |           |                      |            |             |            |           |    |           |    |          |
|                  |              |               |                |              |           |                      |            |             |            |           |    |           |    |          |
|                  |              |               |                |              |           |                      |            |             |            |           |    |           |    |          |
|                  |              |               |                |              |           |                      |            |             |            |           |    |           |    |          |
|                  |              |               |                |              |           |                      |            |             |            |           |    |           |    |          |

**YR**

**AC Induction Motor Performance Data**

Record # 47558

Typical performance - not guaranteed values

| <b>Winding:</b> 09WGT118-R002 |          | <b>Type:</b> 0954M             |  | <b>Enclosure:</b> TEFC |  |
|-------------------------------|----------|--------------------------------|--|------------------------|--|
| <b>Nameplate Data</b>         |          |                                | <b>460 V, 60 Hz:<br/>High Voltage Connection</b> |                        |  |
| <b>Rated Output (HP)</b>      | 7.5      | <b>Full Load Torque</b>        | 33.2 LB-FT                                       |                        |  |
| <b>Volts</b>                  | 230/460  | <b>Start Configuration</b>     | direct on line                                   |                        |  |
| <b>Full Load Amps</b>         | 22/11    | <b>Breakdown Torque</b>        | 113 LB-FT  |                        |  |
| <b>R.P.M.</b>                 | 1180     | <b>Pull-up Torque</b>          | 41.3 LB-FT                                       |                        |  |
| <b>Hz</b>                     | 60       | <b>Locked-rotor Torque</b>     | 57.4 LB-FT                                       |                        |  |
| <b>NEMA Design Code</b>       | A        | <b>Starting Current</b>        | 74.8 A   |                        |  |
| <b>Service Factor (S.F.)</b>  | 1.15     | <b>No-load Current</b>         | 6.06 A   |                        |  |
| <b>NEMA Nom. Eff.</b>         | 91       | <b>Line-line Res. @ 25°C</b>   | 0.87037 Ω  |                        |  |
| <b>Rating - Duty</b>          | 40C      | <b>Temp. Rise @ Rated Load</b> | 36°C   |                        |  |
| <b>S.F. Amps</b>              | AMB-CONT | <b>Temp. Rise @ S.F. Load</b>  | 42°C   |                        |  |

**Load Characteristics 460 V, 60 Hz, 7.5 HP**

| <b>% of Rated Load</b> | <b>25</b> | <b>50</b> | <b>75</b> | <b>100</b> | <b>125</b> | <b>150</b> | <b>S.F.</b> |
|------------------------|-----------|-----------|-----------|------------|------------|------------|-------------|
| <b>Power Factor</b>    | 32        | 52        | 63        | 70         | 74         | 75         | 72          |
| <b>Efficiency</b>      | 83.2      | 89.4      | 90.9      | 91.1       | 90.7       | 89.9       | 90.9        |
| <b>Speed</b>           | 1196.5    | 1192.4    | 1188.3    | 1183.7     | 1178.7     | 1173.2     | 1181        |
| <b>Line amperes</b>    | 6.49      | 7.59      | 9.09      | 11         | 13.1       | 15.5       | 12.3        |

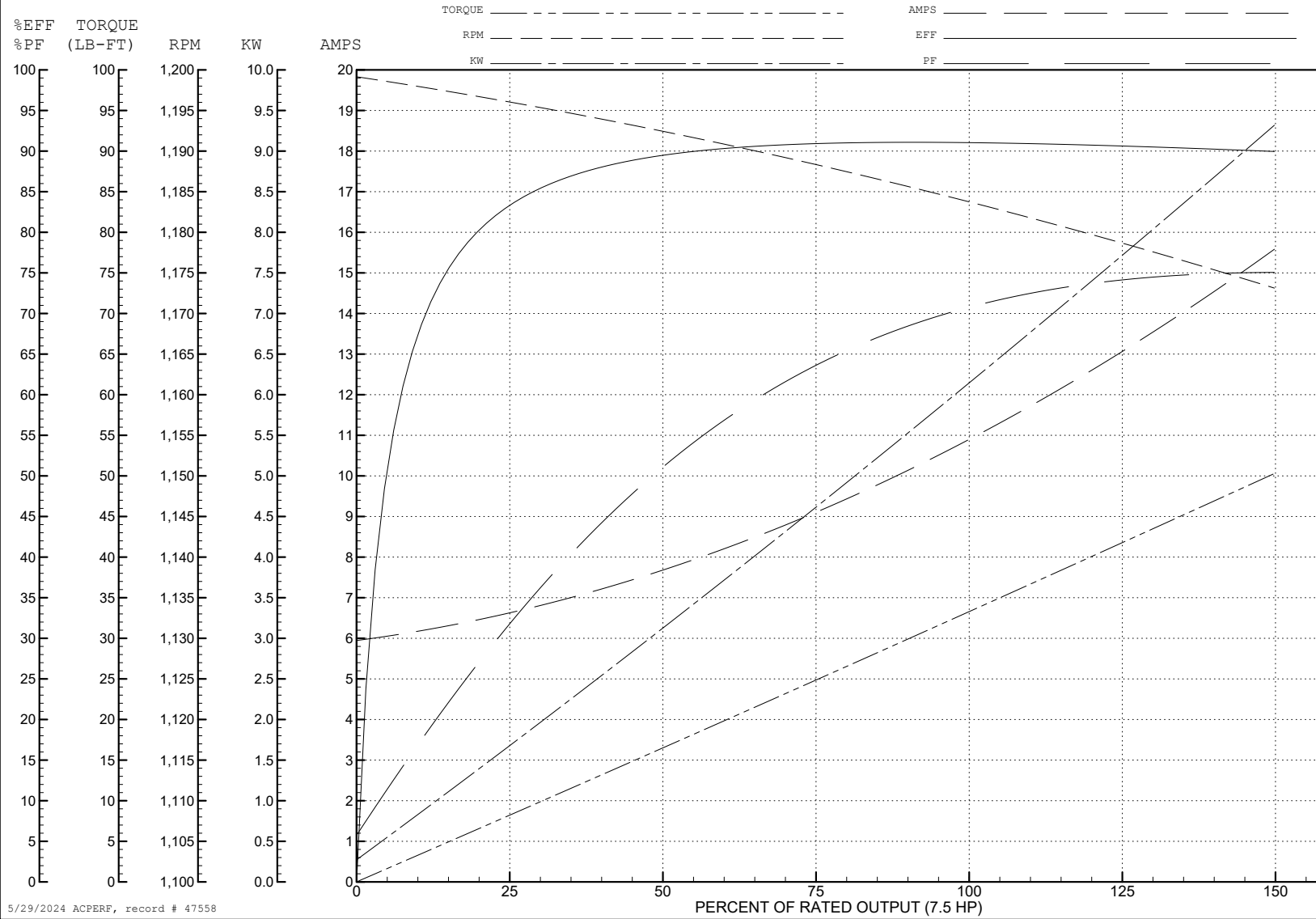
ABB Motors and Mechanical Inc.

WINDING # 09WGT118

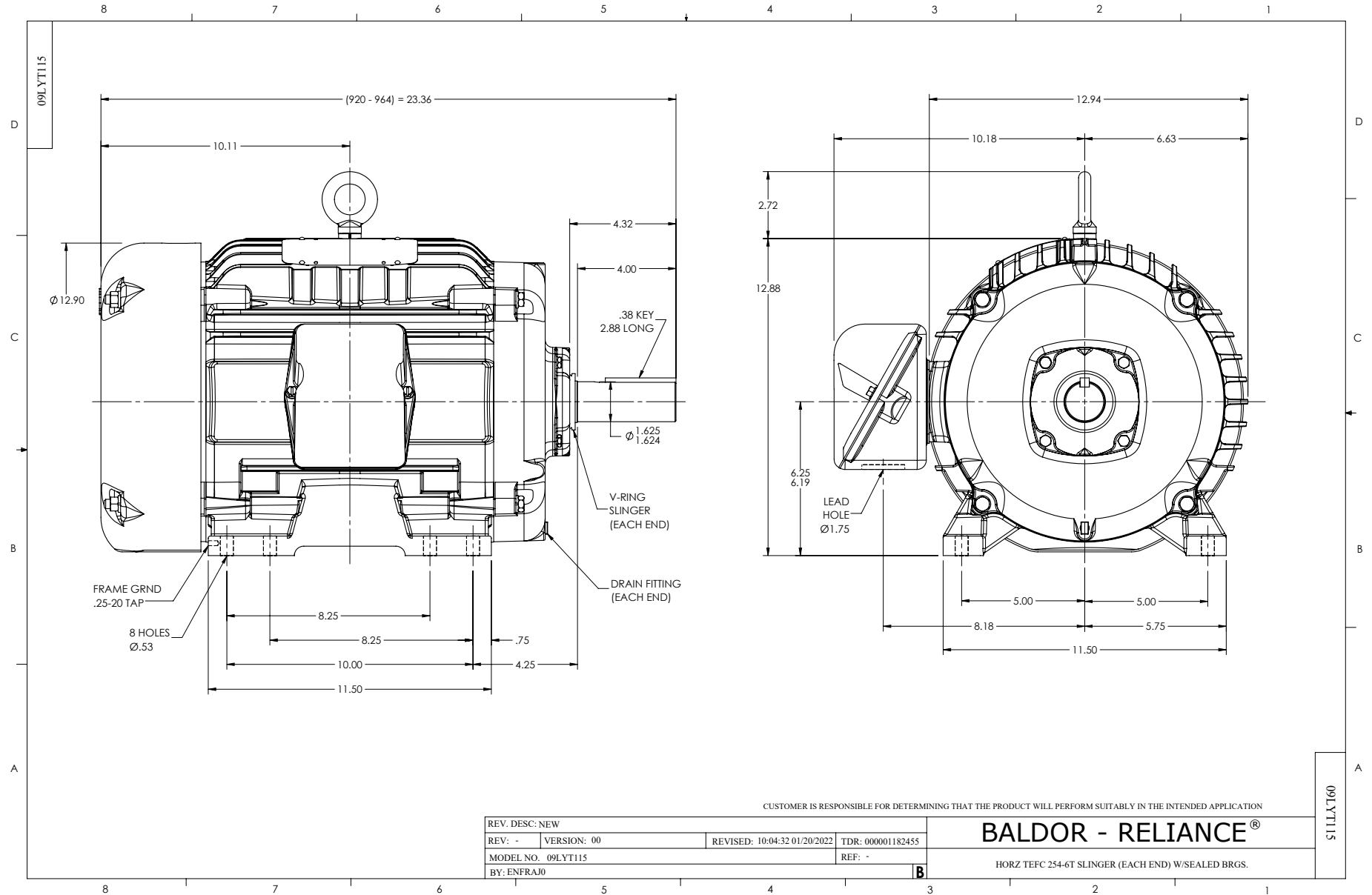
7.5 HP 3 PH 60 HZ 1180 RPM 460 V 0954M

Typical performance - not guaranteed values.

TORQUES (LB-FT): PO=113 PU=41.3 LR=57.4 LRA=74.8



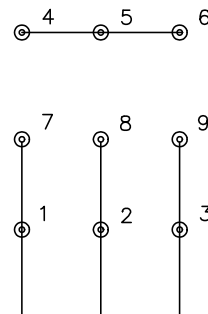
5/29/2024 ACPERF, record # 47558



CD0005



LOW VOLTAGE  
(2Y)



LINE

HIGH VOLTAGE  
(1Y)



LINE

NOTES:

1. INTERCHANGE ANY TWO LINE LEADS TO REVERSE ROTATION.
2. OPTIONAL THERMOSTATS ARE PROVIDED WHEN SPECIFIED.
3. ACTUAL NUMBER OF INTERNAL PARALLEL CIRCUITS MAY BE A MULTIPLE OF THOSE SHOWN ABOVE.
4. LEAD COLORS ARE OPTIONAL. LEADS MUST ALWAYS BE NUMBERED AS SHOWN.

CD0005

|   |         |                         |              |
|---|---------|-------------------------|--------------|
| REV. DESC: REVISE TO SHOW OPTIONAL COLORS |         |                         |              |
| REV. LTR: E                               | BY: JLP | REVISED: 01/19/99 10:15 | TDR: 0171435 |
| S00000                                    |         | FILE: AAA00005140       | MDL: -       |
|   |         | MTL: -                  |              |

**BALDOR ELECTRIC Co.**

3PH, DV, 9 LEADS