

BALDOR • RELIANCE

Customer information packet

HBAO3774T

10 AOHP, 1755RPM, 3PH, 60HZ, 215T, 0748M, TEAO

Class - None

Division - Not Applicable

Specifications

Enclosure	TEAO
Frame	215T
Frame Material	Iron
Frequency	60.00 Hz
Haz Area Class and Group	None
Haz Area Division	Not Applicable
Motor Letter Type	Three Phase
Output @ Frequency	10.000 HP @ 60 HZ
Phase	3
Synchronous Speed @ Frequency	1800 RPM @ 60 HZ
Voltage @ Frequency	230.0 V @ 60 HZ 460.0 V @ 60 HZ
Agency Approvals	CSA CURUSEEV NEMA_PREMIUM WEEE
Ambient Temperature	40 °C
Auxillary Box	No Auxillary Box
Auxillary Box Lead Termination	None
Base Indicator	Rigid
Bearing Grease Type	Polyrex EM (-20F +300F)
Blower	None
Current @ Voltage	26.300 A @ 208.0 V 25.000 A @ 230.0 V 12.500 A @ 460.0 V
Design Code	A
Drip Cover	No Drip Cover
Duty Rating	CONT
Efficiency @ 100% Load	92.4 %
Electrically Isolated Bearing	Electrically Isolated Bearings
Feedback Device	NO FEEDBACK
Front Shaft Indicator	None

Part detail

Revision	J
Type	AC
Mech. spec.	07D097
Base	
Status	PRD/A
Elec. spec.	07WGX776
Layout	07LYD097
Eff. date	10-09-2023
CD Diagram	CD0005
Poles	04
Leads	9#14
Proprietary	False
Created date	09-21-2021

Heater Indicator	No Heater
High Voltage Full Load Amps	12.5 a
Insulation Class	H
Inverter Code	Inverter Ready
KVA Code	H
Lifting Lugs	Standard Lifting Lugs
Locked Bearing Indicator	Locked Bearing
Max Speed	2700 rpm
Motor Lead Quantity/Wire Size	9 @ 14 AWG
Motor Lead Termination	Flying Leads
Motor Standards	NEMA
Motor Type	0748M
Mounting Arrangement	F1
Number of Poles	4
Overall Length	16.88 IN
Power Factor	82
Product Family	General Purpose
Pulley End Bearing Type	Ball
Pulley Face Code	Standard
Pulley Shaft Indicator	Standard
Rodent Screen	None
RoHS Status	ROHS COMPLIANT
Service Factor	1.15
Shaft Diameter	1.375 IN
Shaft Ground Indicator	No Shaft Grounding
Shaft Rotation	Reversible
Shaft Slinger Indicator	No Slinger
Speed	1760 rpm
Speed Code	Single Speed
Starting Method	Direct on line
Thermal Device - Bearing	None
Thermal Device - Winding	None
Vibration Sensor Indicator	No Vibration Sensor
Winding Thermal 1	None

Winding Thermal 2

None

Nameplate

NP4312A01M05L

CAT #	HBAO3774T		SER #		CC		WGT	231	LBS
SPEC	07D097X776G2		RATING	40C AMB-CONT					
HP	VOLTS	AMPS	MAG CUR	CODE	RPM	DES	PF	NEMA NOM. EFF	
10 AO	230/460	25/12.5	10.2/5.1	H	1760	A	82	92.4	
10.5AO	230/460	25.6/12.8	10.2/5.1	J	1760	-	84	92.4	
11 AO	230/460	26.8/13.4	10.2/5.1	H	1760	-	84	92.4	
11.5AO	230/460	27.8/13.9	10.2/5.1	G	1755	-	84	91.7	
12 AO	230/460	29/14.5	10.2/5.1	G	1755	-	84	91.7	
PH	3	CL	H	HZ	60	ENCL	TEAO	IP	54
								SF	1.15
									AIR OVER
DE BRG	6307	ODE BRG	6206	FRAME	215T				
INV TYPE:		VPWM		SL HZ	1.33	CHP	60	TO	90
									1.5:1
WK2	1.18	LB FT2		MAX RPM	2700	CT	6	TO	60
									10:1
				VT	3	TO	60		20:1
SFA 28/14									
YR:									

AC Induction Motor Performance Data

Record # 95859

Typical performance - not guaranteed values

Winding: 07WGX776-R095		Type: 0748M	Enclosure: TEAO	
Nameplate Data			460 V, 60 Hz: High Voltage Connection	
Rated Output (HP)	10 AIR OVER	Full Load Torque	29.8 LB-FT	
Volts	230/460	Start Configuration	direct on line	
Full Load Amps	25/12.5	Breakdown Torque	87 LB-FT	
R.P.M.	1760	Pull-up Torque	51.9 LB-FT	
Hz	60 Phase	3	Locked-rotor Torque	57.5 LB-FT
NEMA Design Code	A KVA Code	H	Starting Current	96.2 A
Service Factor (S.F.)	1.15	No-load Current	5.12 A	
NEMA Nom. Eff.	92.4 Power Factor	82	Line-line Res. @ 25°C	0.973 Ω
Rating - Duty	40C AMB-CONT	Temp. Rise @ Rated Load	60°C	
S.F. Amps	28/14	Temp. Rise @ S.F. Load	76°C	
		Locked-rotor Power Factor	35.2	
		Rotor inertia	1.18 lb-ft ²	

Load Characteristics 460 V, 60 Hz, 10 HP

% of Rated Load	25	50	75	100	125	150	S.F.
Power Factor	44	67	78	82	84	85	83
Efficiency	90	92.9	93.1	92.5	91.4	90.1	91.8
Speed	1790	1781	1771	1762	1750	1739	1755
Line amperes	5.84	7.52	9.75	12.3	15.2	18.3	14

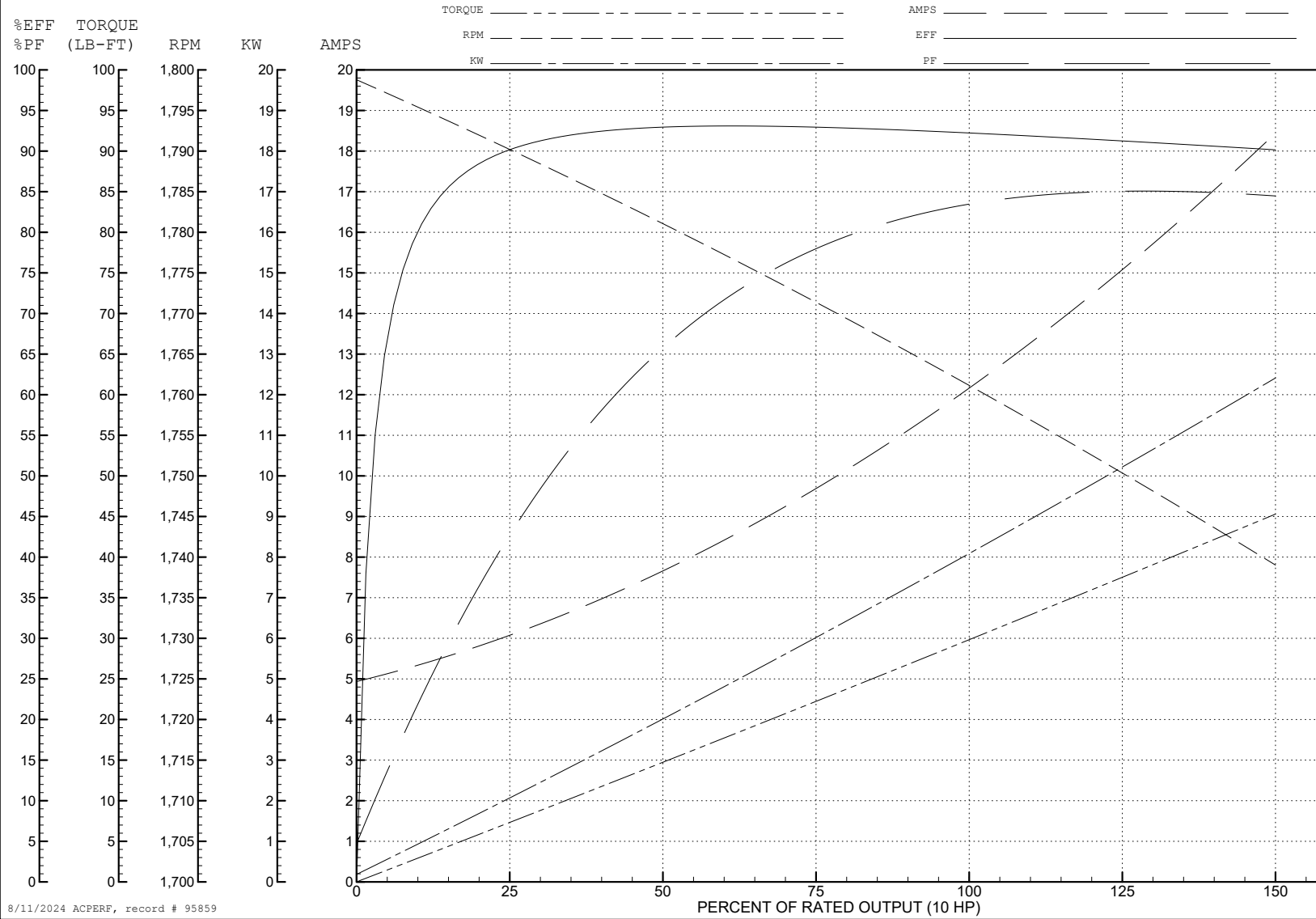
ABB Motors and Mechanical Inc.

WINDING # 07WGX776

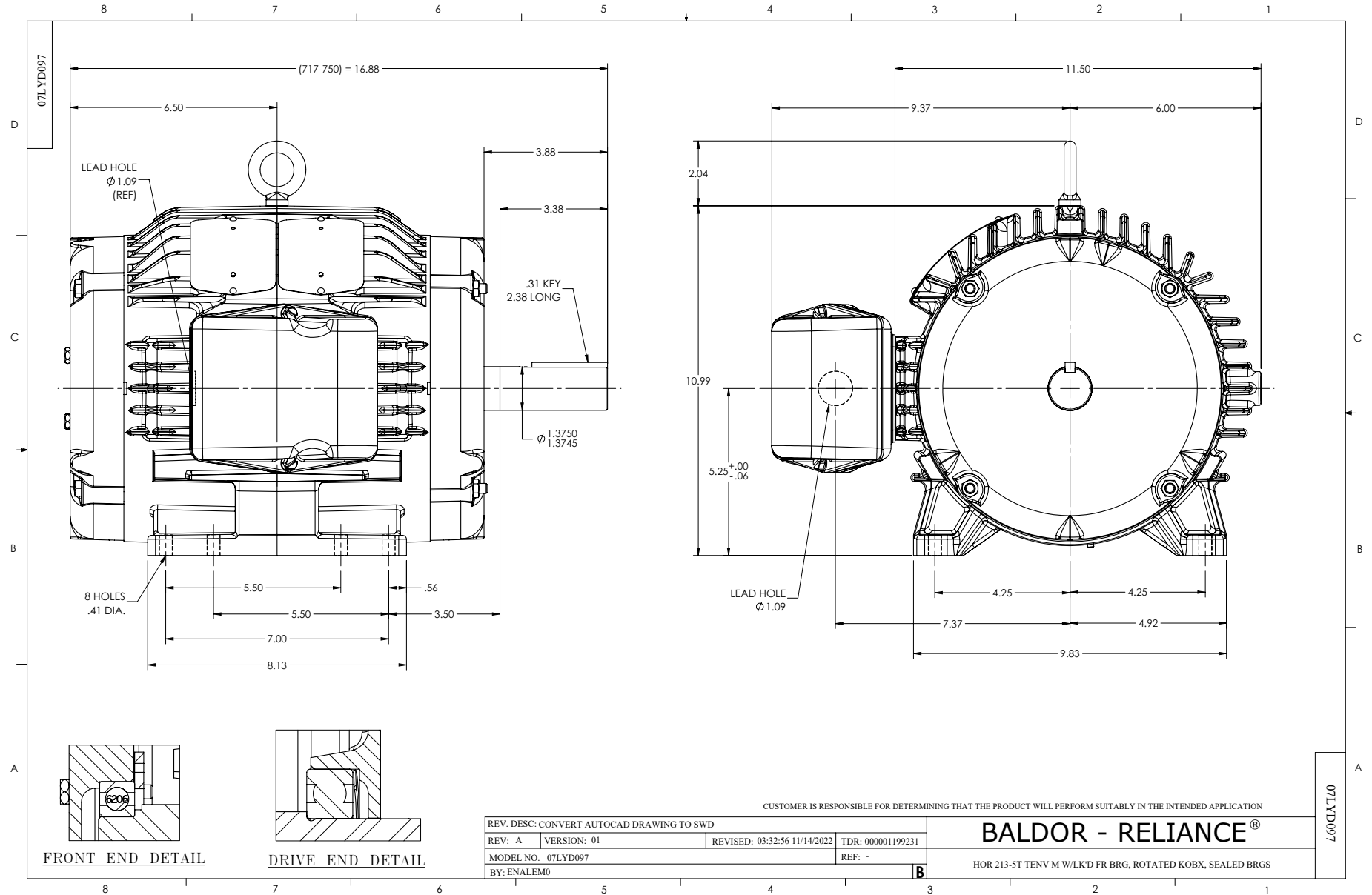
Typical performance - not guaranteed values.

10 HP 3 PH 60 HZ 1760 RPM 460 V 0748M

TORQUES (LB-FT): PO=87 PU=51.9 LR=57.5 LRA=96.2



8/11/2024 ACPERF, record # 95859



CD0005



LOW VOLTAGE
(2Y)



LINE

HIGH VOLTAGE
(1Y)



LINE

NOTES:

1. INTERCHANGE ANY TWO LINE LEADS TO REVERSE ROTATION.
2. OPTIONAL THERMOSTATS ARE PROVIDED WHEN SPECIFIED.
3. ACTUAL NUMBER OF INTERNAL PARALLEL CIRCUITS MAY BE A MULTIPLE OF THOSE SHOWN ABOVE.
4. LEAD COLORS ARE OPTIONAL. LEADS MUST ALWAYS BE NUMBERED AS SHOWN.

CD0005

REV. DESC: REVISE TO SHOW OPTIONAL COLORS			
REV. LTR: E	BY: JLP	REVISED: 01/19/99 10:15	TDR: 0171435
S00000		FILE: AAA00005140	MDL: -
		MTL: -	

BALDOR ELECTRIC Co.

3PH, DV, 9 LEADS