

ABB BALDOR RELIANCE III

Customer information packet

HBAO3770T

7.5AOHP, 1765RPM, 3PH, 60HZ, 213T, 0738M, TEAO

Class - None

Division - Not Applicable

Specifications

Enclosure	TEAO
Frame	213T
Frame Material	Iron
Frequency	60.00 Hz
Haz Area Class and Group	None
Haz Area Division	Not Applicable
Motor Letter Type	Three Phase
Output @ Frequency	7.500 HP @ 60 HZ
Phase	3
Synchronous Speed @ Frequency	1800 RPM @ 60 HZ
Voltage @ Frequency	230.0 V @ 60 HZ 460.0 V @ 60 HZ
Agency Approvals	CSA CURUSEEV NEMA_PREMIUM WEEE
Ambient Temperature	40 °C
Auxiliary Box	NO AUXILLARY BOX
Auxiliary Box Lead Termination	None
Base Indicator	Rigid
Bearing Grease Type	Polyrex EM (-20F +300F)
Blower	None
Current @ Voltage	9.500 A @ 460.0 V 19.800 A @ 208.0 V 19.000 A @ 230.0 V
Design Code	A
Drip Cover	No Drip Cover
Duty Rating	CONT
Efficiency @ 100% Load	91.7 %
Electrically Isolated Bearing	Electrically Isolated Bearings
Feedback Device	NO FEEDBACK
Front Shaft Indicator	None

Part Detail

Revision	K
Type	AC
Mech. spec.	07D097
Base	
Status	PRD/A
Elec. spec.	07WGX790
Layout	07LYD097
Eff. date	04-13-2026
CD Diagram	CD0005
Poles	04
Leads	9#14
Proprietary	False
Created date	09-21-2021

Heater Indicator	No Heater
High Voltage Full Load Amps	9.5 a
Insulation Class	H
Inverter Code	Inverter Ready
KVA Code	J
Lifting Lugs	Standard Lifting Lugs
Locked Bearing Indicator	Locked Bearing
Max Speed	2700 rpm
Motor Lead Quantity/Wire Size	9 @ 14 AWG
Motor Lead Termination	Flying Leads
Motor Standards	NEMA
Motor Type	0738M
Mounting Arrangement	F1
Number of Poles	4
Overall Length	16.88 IN
Power Factor	81
Product Family	General Purpose
Pulley End Bearing Type	Ball
Pulley Face Code	Standard
Pulley Shaft Indicator	Standard
Rodent Screen	None
RoHS Status	ROHS COMPLIANT
Service Factor	1.15
Shaft Diameter	1.375 IN
Shaft Ground Indicator	No Shaft Grounding
Shaft Rotation	Reversible
Shaft Slinger Indicator	No Slinger
Speed	1770 rpm
Speed Code	Single Speed
Starting Method	Direct on line
Thermal Device - Bearing	None
Thermal Device - Winding	None
Vibration Sensor Indicator	No Vibration Sensor
Winding Thermal 1	None

Winding Thermal 2

None

Nameplate

NP4312A01M05L

CAT #	HBAO3770T		SER #			CC			WGT	198	LBS		
SPEC	07D097X790G2		RATING	40C AMB-CONT									
HP	VOLTS	AMPS	MAG CUR	CODE	RPM	DES	PF	NEMA NOM.	EFF				
7.5 AO	230/460	19/9.5	8.6/4.3	J	1770	A	81	91.7					
8 AO	230/460	20/10	8.6/4.3	H	1765	-	82	91					
8.5AO	230/460	21/10.5	8.6/4.3	H	1765	-	83	91					
9 AO	230/460	22/11	8.6/4.3	G	1760	-	85	90.2					
9.5 AO	230/460	23/11.5	8.6/4.3	G	1755	-	86	89.5					
PH	3	CL	H	HZ	60	ENCL	TEAO	IP	54	SF	1.15	AIR OVER	
DE BRG	6307	ODE BRG	6206	FRAME	213T								
INV TYPE:	VPWM	SL HZ	1	CHP	60	TO	90	1.5:1					
WK2	0.934	LB FT2	MAX RPM	2700	CT	6	TO	60	10:1				
			VT	3	TO	60	20:1						
SFA 21.6/10.8													
YR:													

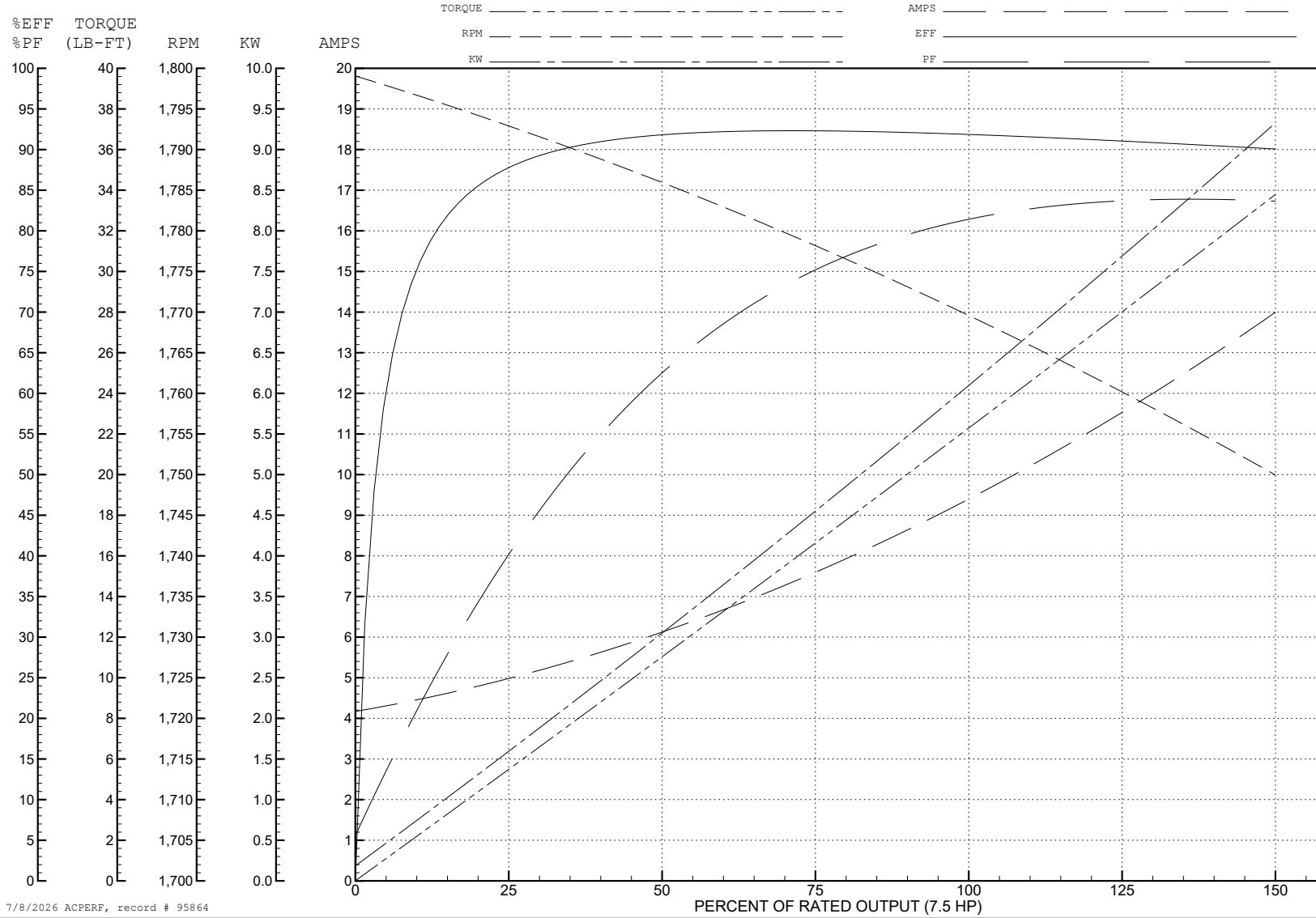
ABB Motors and Mechanical Inc.

WINDING # 07WGx790

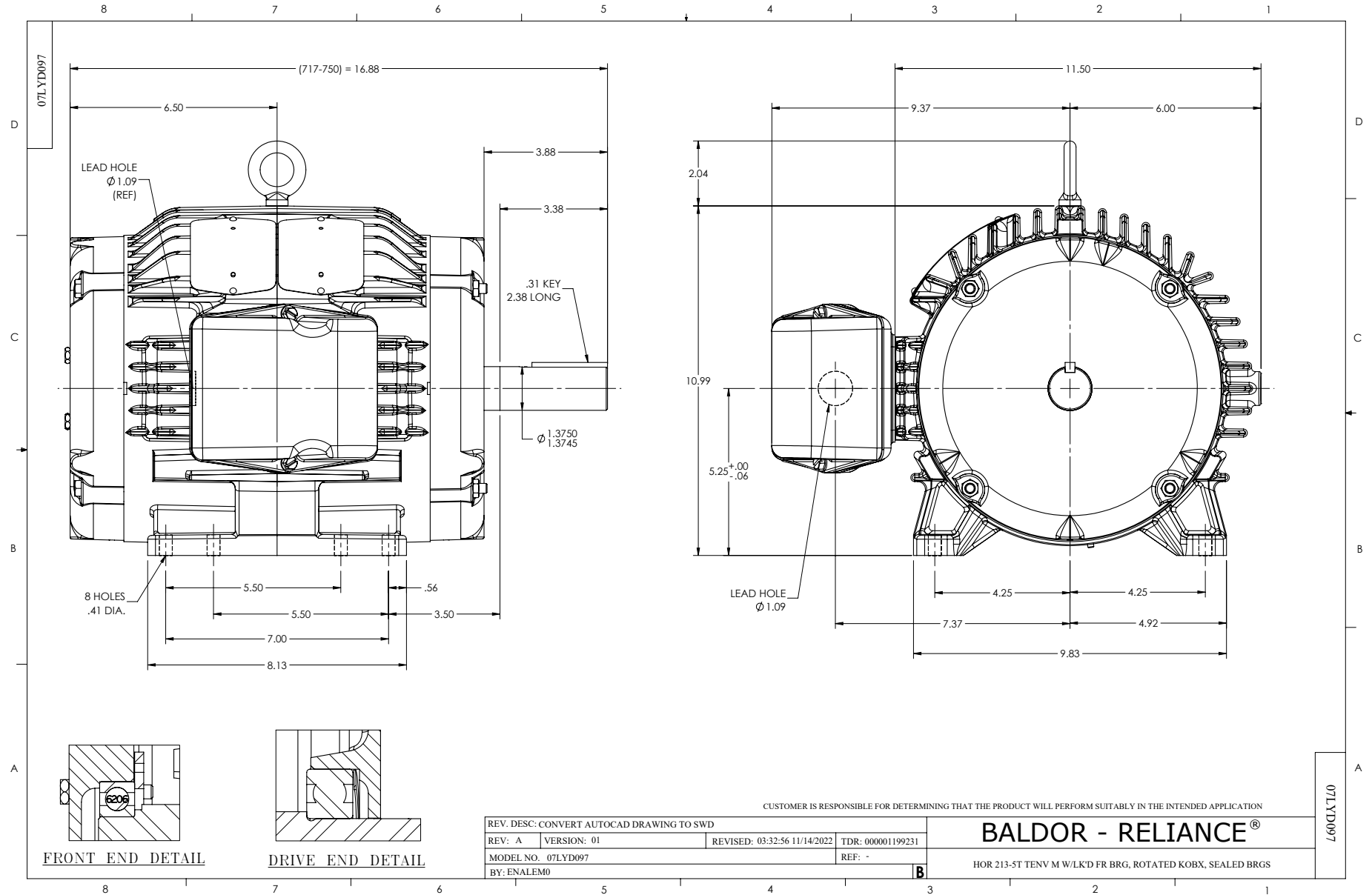
Typical performance - not guaranteed values.

7.5 HP 3 PH 60 HZ 1770 RPM 460 V 0738M

TORQUES (LB-FT): PO=70.9 PU=32.7 LR=43 LRA=70.8



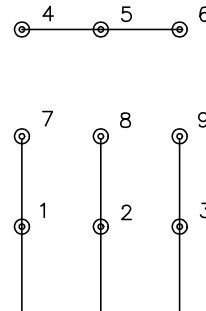
7/8/2026 ACPERF, record # 95864



CD0005

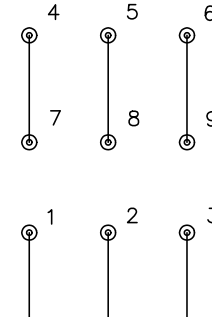


LOW VOLTAGE
(2Y)



LINE

HIGH VOLTAGE
(1Y)



LINE

NOTES:

1. INTERCHANGE ANY TWO LINE LEADS TO REVERSE ROTATION.
2. OPTIONAL THERMOSTATS ARE PROVIDED WHEN SPECIFIED.
3. ACTUAL NUMBER OF INTERNAL PARALLEL CIRCUITS MAY BE A MULTIPLE OF THOSE SHOWN ABOVE.
4. LEAD COLORS ARE OPTIONAL. LEADS MUST ALWAYS BE NUMBERED AS SHOWN.

CD0005

REV. DESC: REVISE TO SHOW OPTIONAL COLORS

REV. LTR: E BY: JLP REVISED: 01/19/99 10:15 TDR: 0171435

500000

FILE: AAA00005140

MDL: -

MTL: -

BALDOR ELECTRIC Co.

3PH, DV, 9 LEADS