

ABB BALDOR RELIANCE III

Customer information packet

HBAO3663T

5.0 AOHP, 3480RPM, 3PH, 60HZ, 184T, 0632M, TEA

Class - None

Division - Not Applicable

Specifications

Enclosure	TEAO
Frame	184T
Frame Material	Iron
Frequency	60.00 Hz
Haz Area Class and Group	None
Haz Area Division	Not Applicable
Motor Letter Type	Three Phase
Output @ Frequency	5.000 HP @ 60 HZ
Phase	3
Synchronous Speed @ Frequency	3600 RPM @ 60 HZ
Voltage @ Frequency	460.0 V @ 60 HZ 230.0 V @ 60 HZ
Agency Approvals	CSA CURUSEEV NEMA_PREMIUM UR WEEE
Ambient Temperature	40 °C
Auxiliary Box	NO AUXILLARY BOX
Auxiliary Box Lead Termination	None
Base Indicator	Rigid
Bearing Grease Type	Polyrex EM (-20F +300F)
Blower	None
Current @ Voltage	5.700 A @ 460.0 V 12.000 A @ 208.0 V 11.400 A @ 230.0 V
Design Code	A
Drip Cover	No Drip Cover
Duty Rating	CONT
Efficiency @ 100% Load	90.2 %
Electrically Isolated Bearing	Electrically Isolated Bearings
Feedback Device	NO FEEDBACK

Part Detail

Revision	H
Type	AC
Mech. spec.	06K933
Base	
Status	PRD/A
Elec. spec.	06WGW730
Layout	06LYK933
Eff. date	10-09-2023
CD Diagram	CD0005
Poles	02
Leads	9#16
Proprietary	False
Created date	09-21-2021

Front Shaft Indicator	None
Heater Indicator	No Heater
High Voltage Full Load Amps	5.7 a
Insulation Class	H
Inverter Code	Inverter Ready
KVA Code	M
Lifting Lugs	Standard Lifting Lugs
Locked Bearing Indicator	Locked Bearing
Max Speed	5400 rpm
Motor Lead Quantity/Wire Size	9 @ 16 AWG
Motor Lead Termination	Flying Leads
Motor Standards	NEMA
Motor Type	0632M
Mounting Arrangement	F1
Number of Poles	2
Overall Length	13.89 IN
Power Factor	90
Product Family	General Purpose
Pulley End Bearing Type	Sealed Bearing
Pulley Face Code	Standard
Pulley Shaft Indicator	Standard
Rodent Screen	None
RoHS Status	ROHS COMPLIANT
Service Factor	1.15
Shaft Diameter	1.125 IN
Shaft Ground Indicator	No Shaft Grounding
Shaft Rotation	Reversible
Shaft Slinger Indicator	No Slinger
Speed	3490 rpm
Speed Code	Single Speed
Starting Method	Direct on line
Thermal Device - Bearing	None
Thermal Device - Winding	None
Vibration Sensor Indicator	No Vibration Sensor

Winding Thermal 1

None

Winding Thermal 2

None

Nameplate

NP4312A01M05L

CAT #	HBAO3663T		SER #			CC			WGT	105	LBS	
SPEC	06K933W730G2		RATING	40C AMB-CONT								
HP	VOLTS	AMPS	MAG CUR	CODE	RPM	DES	PF	NEMA NOM. EFF				
5 AO	230/460	11.4/5.7	4.2/2.1	M	3490	A	90	90.2				
5.5AO	230/460	12.6/6.3	4.2/2.1	L	3480	-	91	90.2				
6 AO	230/460	13.6/6.8	4.2/2.1	K	3470	-	91	90.2				
6.5AO	230/460	14.8/7.4	4.2/2.1	J	3460	-	92	89.5				
7 AO	230/460	15.8/7.9	4.2/2.1	J	3450	-	92	89.5				
PH	3	CL	H	HZ	60	ENCL	TEAO	IP	54	SF	1.15	AIR OVER
DE BRG	6206	ODE BRG	6206	FRAME	184T							
INV TYPE:	VPWM	SL HZ	1.83	CHP	60	TO	90	1.5:1				
WK2	0.15	LB FT2	MAX RPM	5400	CT	6	TO	60	10:1			
				VT	3	TO	60	20:1				
SFA 13/6.5												
YR:												

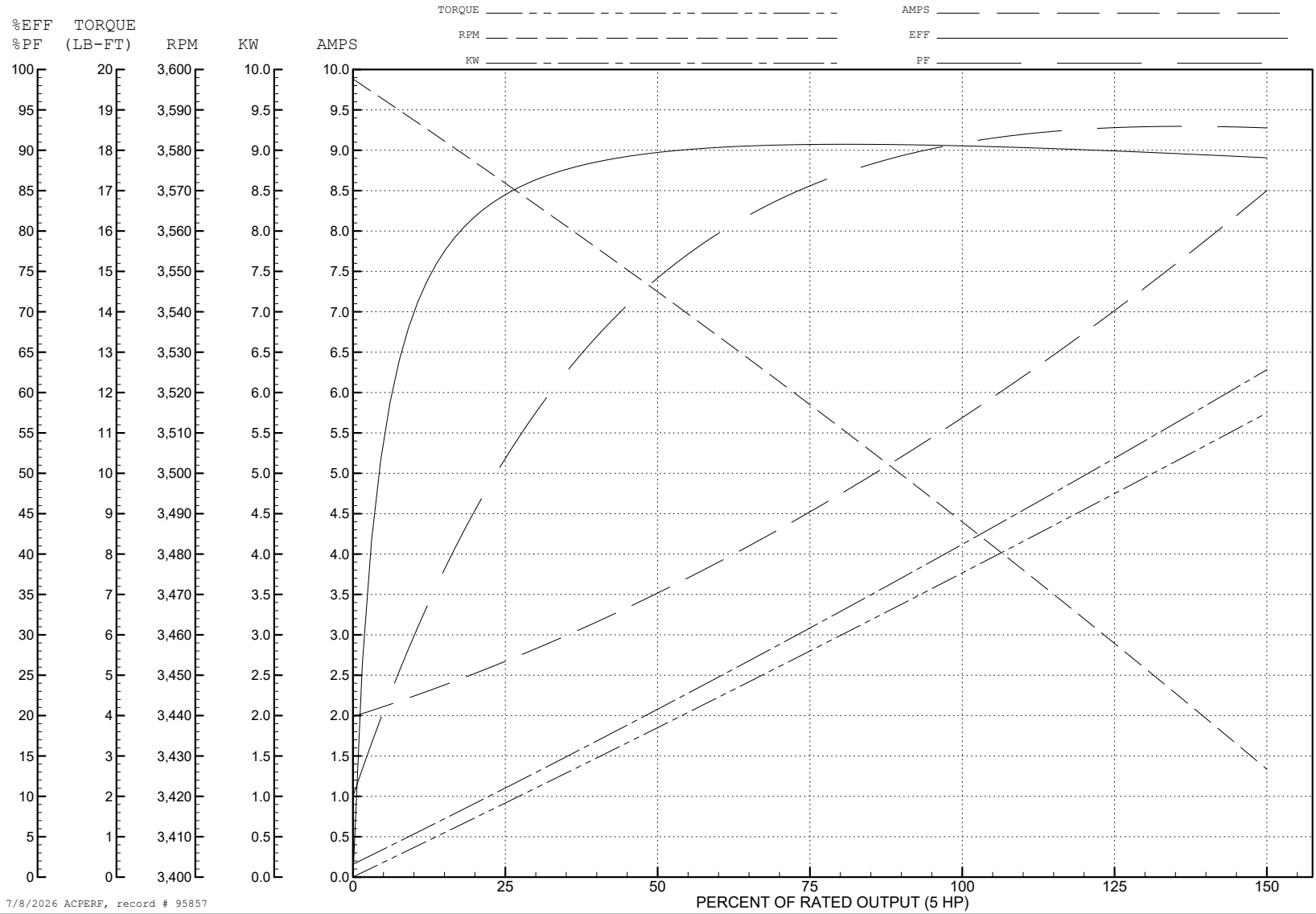
ABB Motors and Mechanical Inc.

WINDING # 06WGW730

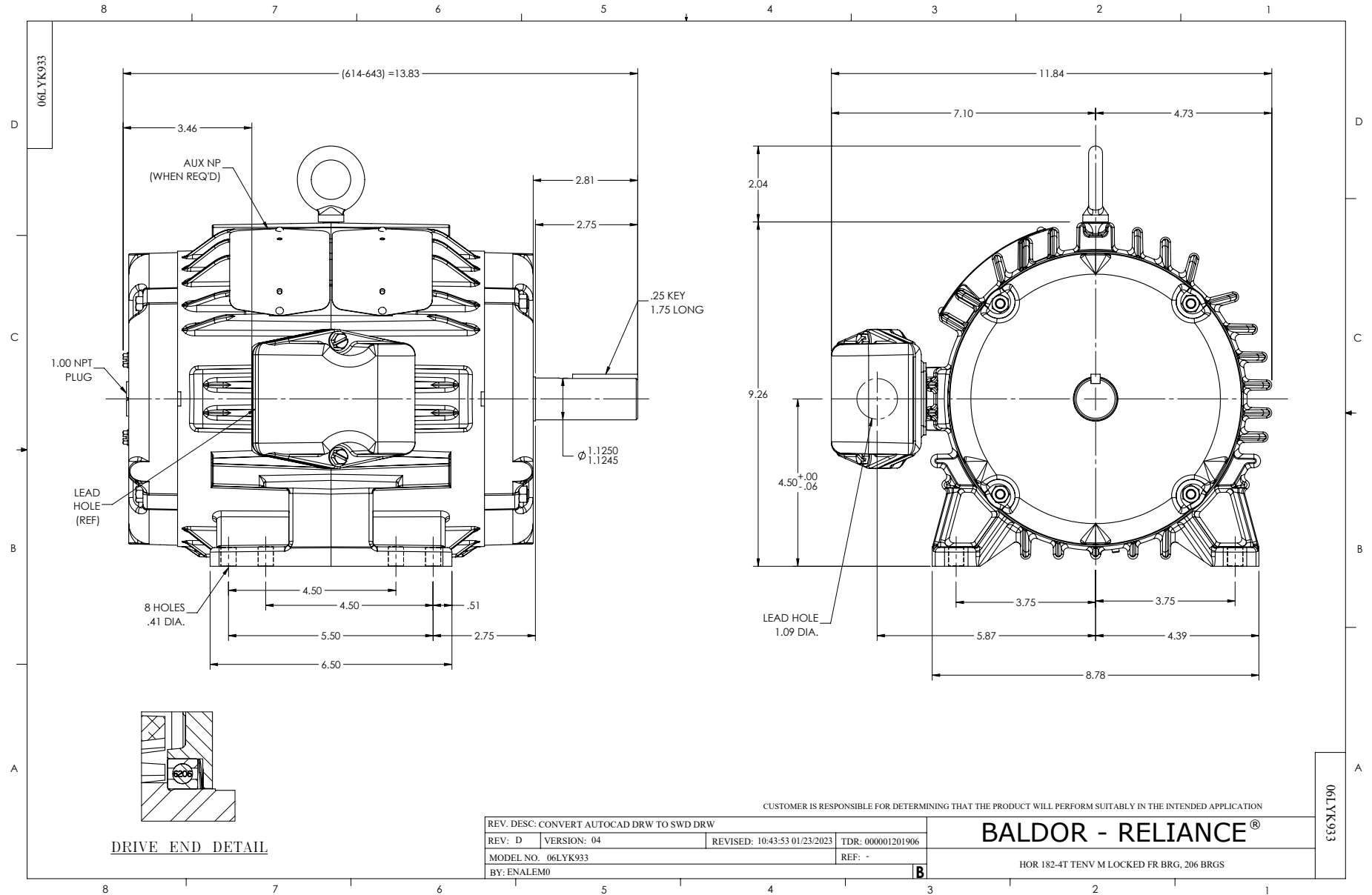
Typical performance - not guaranteed values.

5 HP 3 PH 60 HZ 3490 RPM 460 V 0632M

TORQUES (LB-FT): PO=40.1 PU=30.6 LR=36.9 LRA=64.8



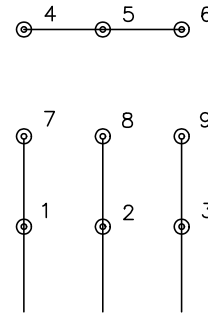
7/8/2026 ACPERF, record # 95857



CD0005

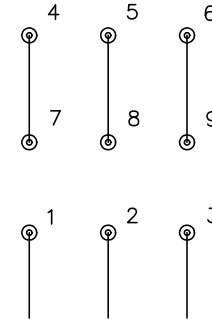


LOW VOLTAGE
(2Y)



LINE

HIGH VOLTAGE
(1Y)



LINE

NOTES:

1. INTERCHANGE ANY TWO LINE LEADS TO REVERSE ROTATION.
2. OPTIONAL THERMOSTATS ARE PROVIDED WHEN SPECIFIED.
3. ACTUAL NUMBER OF INTERNAL PARALLEL CIRCUITS MAY BE A MULTIPLE OF THOSE SHOWN ABOVE.
4. LEAD COLORS ARE OPTIONAL. LEADS MUST ALWAYS BE NUMBERED AS SHOWN.

CD0005

REV. DESC: REVISE TO SHOW OPTIONAL COLORS

REV. LTR: E BY: JLP REVISED: 01/19/99 10:15 TDR: 0171435

500000

FILE: AAA00005140

MDL: -

MTL: -

BALDOR ELECTRIC Co.

3PH, DV, 9 LEADS