

BALDOR • RELIANCE

Customer information packet

HBAO2333T

15 AIR OVERHP, 1765RPM, 3PH, 60HZ, 254T, 0944

Class - None

Division - Not Applicable

Copyright © All product information within this document is subject to ABB Motors and Mechanical Inc. copyright © protection, unless otherwise noted.

9/9/2024 7:45:59 AM

Specifications

Enclosure	TEAO
Frame	254T
Frame Material	Iron
Frequency	60.00 Hz
Haz Area Class and Group	None
Haz Area Division	Not Applicable
Motor Letter Type	Three Phase
Output @ Frequency	15.000 HP @ 60 HZ
Phase	3
Synchronous Speed @ Frequency	1800 RPM @ 60 HZ
Voltage @ Frequency	460.0 V @ 60 HZ 230.0 V @ 60 HZ
Agency Approvals	CSA EEV CURUSEEV NEMA PREMIUM NEMA_PREMIUM WEEE
Ambient Temperature	40 °C
Auxillary Box	No Auxillary Box
Auxillary Box Lead Termination	None
Base Indicator	Rigid
Bearing Grease Type	Polyrex EM (-20F +300F)
Blower	None
Current @ Voltage	38.000 A @ 208.0 V 36.200 A @ 230.0 V 18.100 A @ 460.0 V
Design Code	A
Drip Cover	No Drip Cover
Duty Rating	CONT
Efficiency @ 100% Load	92.4 %
Electrically Isolated Bearing	Electrically Isolated Bearings
Feedback Device	NO FEEDBACK

Part detail

Revision	K
Type	AC
Mech. spec.	09M871
Base	
Status	PRD/A
Elec. spec.	09WGT597
Layout	09LYM871
Eff. date	11-14-2023
CD Diagram	CD0005
Poles	04
Leads	9#12
Proprietary	False
Created date	09-21-2021

Front Shaft Indicator	None
Heater Indicator	No Heater
High Voltage Full Load Amps	18.1 a
Insulation Class	F
Inverter Code	Inverter Ready
KVA Code	H
Lifting Lugs	Standard Lifting Lugs
Locked Bearing Indicator	Locked Bearing
Max Speed	2700 rpm
Motor Lead Quantity/Wire Size	9 @ 12 AWG
Motor Lead Termination	Flying Leads
Motor Standards	NEMA
Motor Type	0944M
Mounting Arrangement	F1
Number of Poles	4
Overall Length	20.75 IN
Power Factor	84
Product Family	General Purpose
Pulley End Bearing Type	Sealed Bearing
Pulley Face Code	Standard
Pulley Shaft Indicator	Standard
Rodent Screen	None
Service Factor	1.15
Shaft Diameter	1.625 IN
Shaft Ground Indicator	No Shaft Grounding
Shaft Rotation	Reversible
Shaft Slinger Indicator	Shaft Slinger
Speed	1765 rpm
Speed Code	Single Speed
Starting Method	Direct on line
Thermal Device - Bearing	None
Thermal Device - Winding	None
Vibration Sensor Indicator	No Vibration Sensor
Winding Thermal 1	None

Winding Thermal 2

None

Nameplate

NP4312A01M01L

CAT #	HBAO2333T				SER #					CC		WGT	268	LBS	
SPEC	09M871T597G2				RATING	40C AMB-CONT									
HZ	VOLTS		AMPS		RPM	HP	SF	NEMA NOM. EFF							
60	230/460		36.2/18.1				1765	15AO	1.15	92.4					
PH	3	CL	H	CODE	H	DES	A	ENCL	TEAO	IP	54	PF	84	%	AIR OVER
DE BRG	6309				ODE BRG	6208				FRAME	254T				
INV TYPE:	VPWM		SL HZ	1.17	CHP	60	TO	90	1.5:1						
WK2	1.93		LB FT2	MAX RPM	2700	CT	6	TO	60	10:1					
14.6/7.3				VT	3	TO	60	20:1							

SFA 41/20.5

YR:

AC Induction Motor Performance Data

Record # 95848

Preliminary Data Sheet

Winding: 09WGT597-R013		Type: 0944M		Enclosure: TEAO	
Nameplate Data			460 V, 60 Hz: High Voltage Connection		
Rated Output (HP)	15 AIR OVER		Full Load Torque	44.5 LB-FT	
Volts	230/460		Start Configuration	direct on line	
Full Load Amps	36.2/18.1		Breakdown Torque	154 LB-FT	
R.P.M.	1765		Pull-up Torque	67.2 LB-FT	
Hz	60	Phase	3	Locked-rotor Torque	83.5 LB-FT
NEMA Design Code	A	KVA Code	H	Starting Current	129 A
Service Factor (S.F.)	1.15		No-load Current	7.32 A	
NEMA Nom. Eff.	92.4	Power Factor	84	Line-line Res. @ 25°C	0.61 Ω
Rating - Duty	40C AMB-CONT		Temp. Rise @ Rated Load	52°C	
S.F. Amps	41/20.5		Temp. Rise @ S.F. Load	67°C	
			Locked-rotor Power Factor	33.3	
			Rotor inertia	1.92 lb-ft ²	

Load Characteristics 460 V, 60 Hz, 15 HP

% of Rated Load	25	50	75	100	125	150	S.F.
Power Factor	48	69	79	84	86	87	86
Efficiency	88	92.1	92.7	92.5	91.7	90.7	91.9
Speed	1792	1785	1777	1768	1759	1749	1761
Line amperes	8.45	11	14.3	18.1	22.2	26.7	20.5

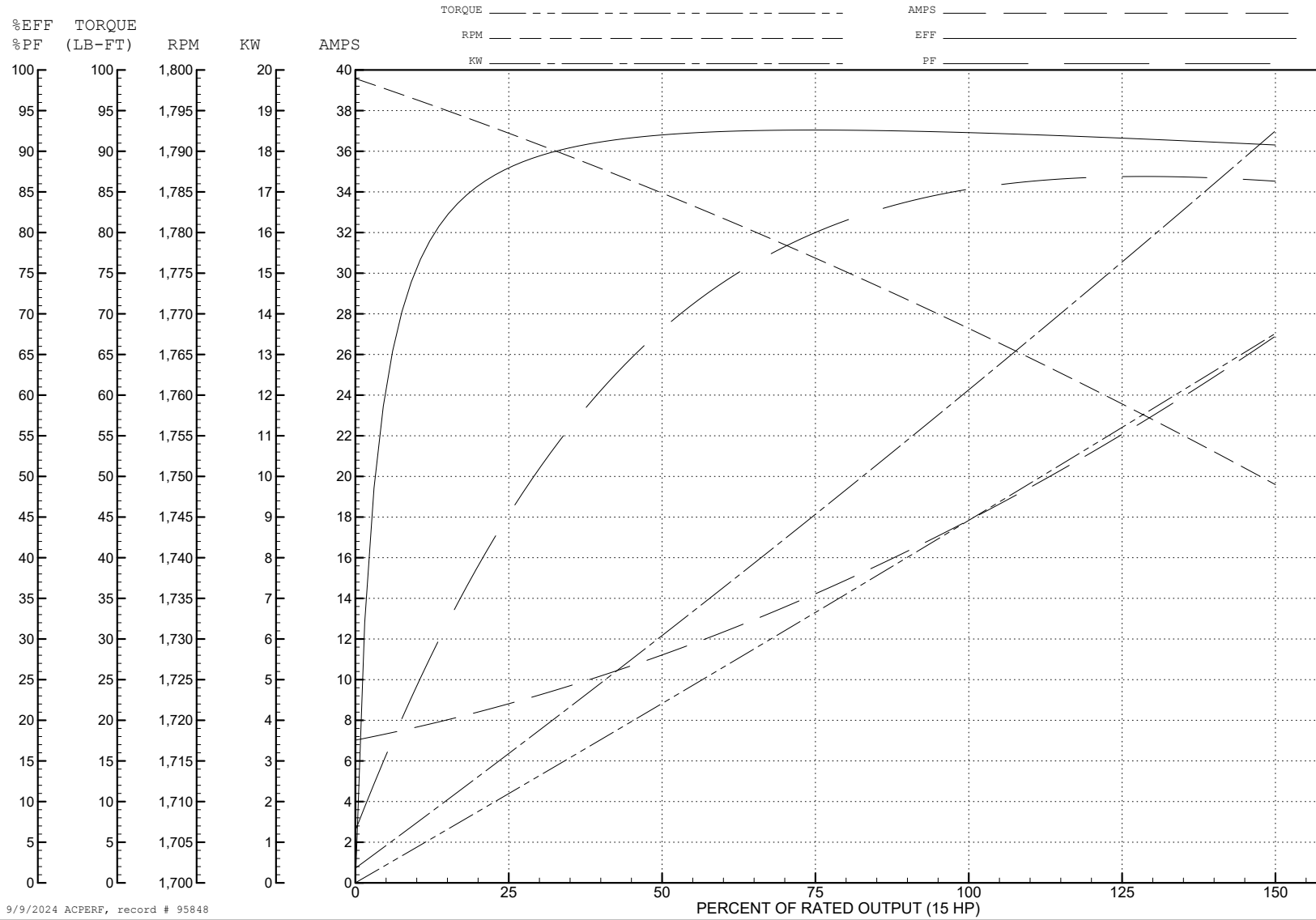
ABB Motors and Mechanical Inc.

WINDING # 09WGT597

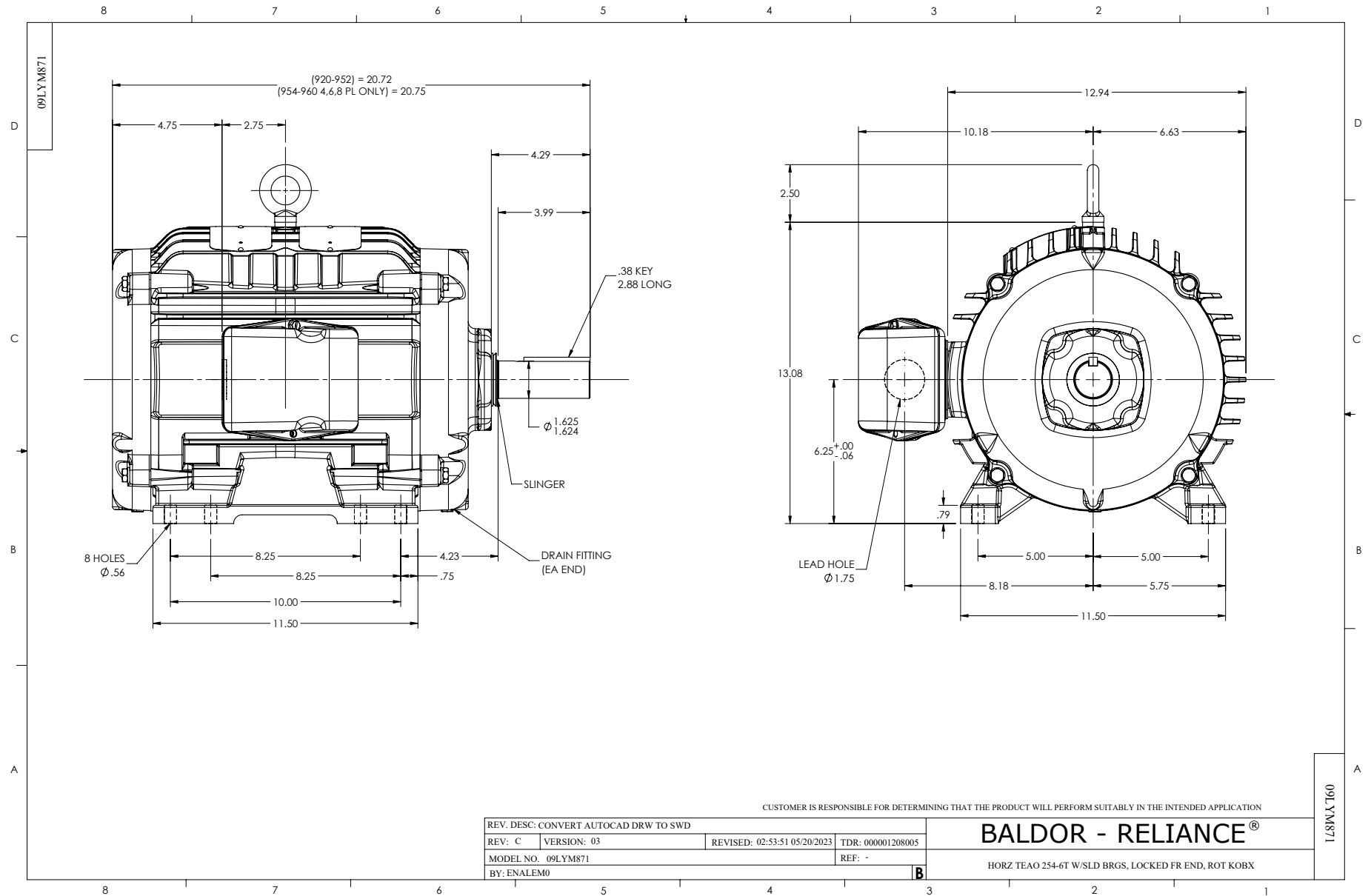
15 HP 3 PH 60 HZ 1765 RPM 460 V 0944M

Typical performance - not guaranteed values.

TORQUES (LB-FT): PO=154 PU=67.2 LR=83.5 LRA=129



9/9/2024 ACPERF, record # 95848



CUSTOMER IS RESPONSIBLE FOR DETERMINING THAT THE PRODUCT WILL PERFORM SUITABLY IN THE INTENDED APPLICATION

REV. DESC: CONVERT AUTOCAD DRW TO SWD			
REV: C	VERSION: 03	REVISED: 02:53:51 05/20/2023	TDR: 000001208005
MODEL NO. 09LYM871		REF: -	
BY: ENALEM0			

BALDOR - RELIANCE®

HORZ TEAO 254-6T W/SLD BRGS, LOCKED FR END, ROT KOBX

09LYM871

CD0005



LOW VOLTAGE
(2Y)



LINE

HIGH VOLTAGE
(1Y)



LINE

NOTES:

1. INTERCHANGE ANY TWO LINE LEADS TO REVERSE ROTATION.
2. OPTIONAL THERMOSTATS ARE PROVIDED WHEN SPECIFIED.
3. ACTUAL NUMBER OF INTERNAL PARALLEL CIRCUITS MAY BE A MULTIPLE OF THOSE SHOWN ABOVE.
4. LEAD COLORS ARE OPTIONAL. LEADS MUST ALWAYS BE NUMBERED AS SHOWN.

CD0005

REV. DESC: REVISE TO SHOW OPTIONAL COLORS			
REV. LTR: E	BY: JLP	REVISED: 01/19/99 10:15	TDR: 0171435
S00000		FILE: AAA00005140	MDL: -
		MTL: -	

BALDOR ELECTRIC Co.

3PH, DV, 9 LEADS