

ABB BALDOR RELIANCE III

Customer information packet

GNEM4100T

15HP//11KW, 1180//980RPM, 3PH, 60//50HZ, 284

Class - None

Division - Not Applicable

Specifications

Enclosure	TEFC
Frame	284T
Frame Material	Iron
Frequency	50.00 Hz 60.00 Hz
Haz Area Class and Group	None
Haz Area Division	Not Applicable
Motor Letter Type	Three Phase
Output @ Frequency	11.000 KW @ 50 HZ 15.000 HP @ 60 HZ
Phase	3
Synchronous Speed @ Frequency	1000 RPM @ 50 HZ
Voltage @ Frequency	190.0 V @ 50 HZ 208.0 V @ 60 HZ 230.0 V @ 60 HZ 380.0 V @ 50 HZ 460.0 V @ 60 HZ
Agency Approvals	WEEE UKCA NEMA PREMIUM (OLD LOGO) NEMA PREMIUM IE3 CURUSEEV CURUS CE
Ambient Temperature	40 °C
Auxiliary Box	NO AUXILLARY BOX
Auxiliary Box Lead Termination	None
Base Indicator	Rigid
Bearing Grease Type	Polyrex EM (-20F +300F)
Blower	None
Current @ Voltage	48.000 A @ 190.0 V

Part Detail

Revision	E
Type	AC
Mech. spec.	10C151
Base	
Status	PRD/A
Elec. spec.	10WGZ893
Layout	10LYC151
Eff. date	01-07-2026
CD Diagram	CD0180
Poles	06
Leads	9#10
Proprietary	False
Created date	08-17-2023

44.000 A @ 208.0 V

42.000 A @ 230.0 V

24.000 A @ 380.0 V

21.000 A @ 460.0 V

Design Code	A
Drip Cover	No Drip Cover
Duty Rating	CONT
Efficiency @ 100% Load	91.7 %
Electrically Isolated Bearing	Not Electrically Isolated
Feedback Device	NO FEEDBACK
Front Shaft Indicator	None
Heater Indicator	No Heater
High Voltage Full Load Amps	21.0 a
Insulation Class	F
Inverter Code	Inverter Duty
KVA Code	K
Lifting Lugs	Standard Lifting Lugs
Locked Bearing Indicator	Locked Bearing
Motor Lead Quantity/Wire Size	9 @ 10 AWG
Motor Lead Termination	Flying Leads
Motor Standards	NEMA
Motor Type	1064M
Mounting Arrangement	F1
Number of Poles	6
Overall Length	27.76 IN
Power Factor	72
Product Family	General Purpose
Pulley End Bearing Type	Ball
Pulley Face Code	Standard
Pulley Shaft Indicator	Standard
Rodent Screen	None
RoHS Status	ROHS COMPLIANT
Service Factor	1.15
Shaft Diameter	1.875 IN

Shaft Ground Indicator	No Shaft Grounding
Shaft Rotation	Reversible
Shaft Slinger Indicator	Shaft Slinger
Speed	1180 rpm 980 rpm
Speed Code	Single Speed
Starting Method	Direct on line
Thermal Device - Bearing	None
Thermal Device - Winding	None
Vibration Sensor Indicator	No Vibration Sensor
Winding Thermal 1	None
Winding Thermal 2	None

Nameplate

NP4304L

CAT.NO.	GNEM4100T						
SPEC.	10C151Z893G1						
HP	15HP//11KW				PH	3	
VOLTS	208-230/460//190/380						
AMPS	44-42/21//48/24						
R.P.M. (1/MIN)	1180//980				WT.	205	KG
FRAME	284T	HZ	60//50		I.P.	54	
SER.F.	1.15	CODE	K	DES.	A	CLASS	F
NOM.EFF.	91.7//90.3		% (100%)				
P.F.	72	IC411, 10:1 VT					
RATING	40C AMB-CONT			CC	010A		
DE	6311	ODE	6309				
ENCL	TEFC	SN					
	IE3-50HZ 92.8(75%),92.2(50%)						
	IE3-60HZ 92.9(75%),91.6(50%)						
	SFA 49-46/23//52/26						

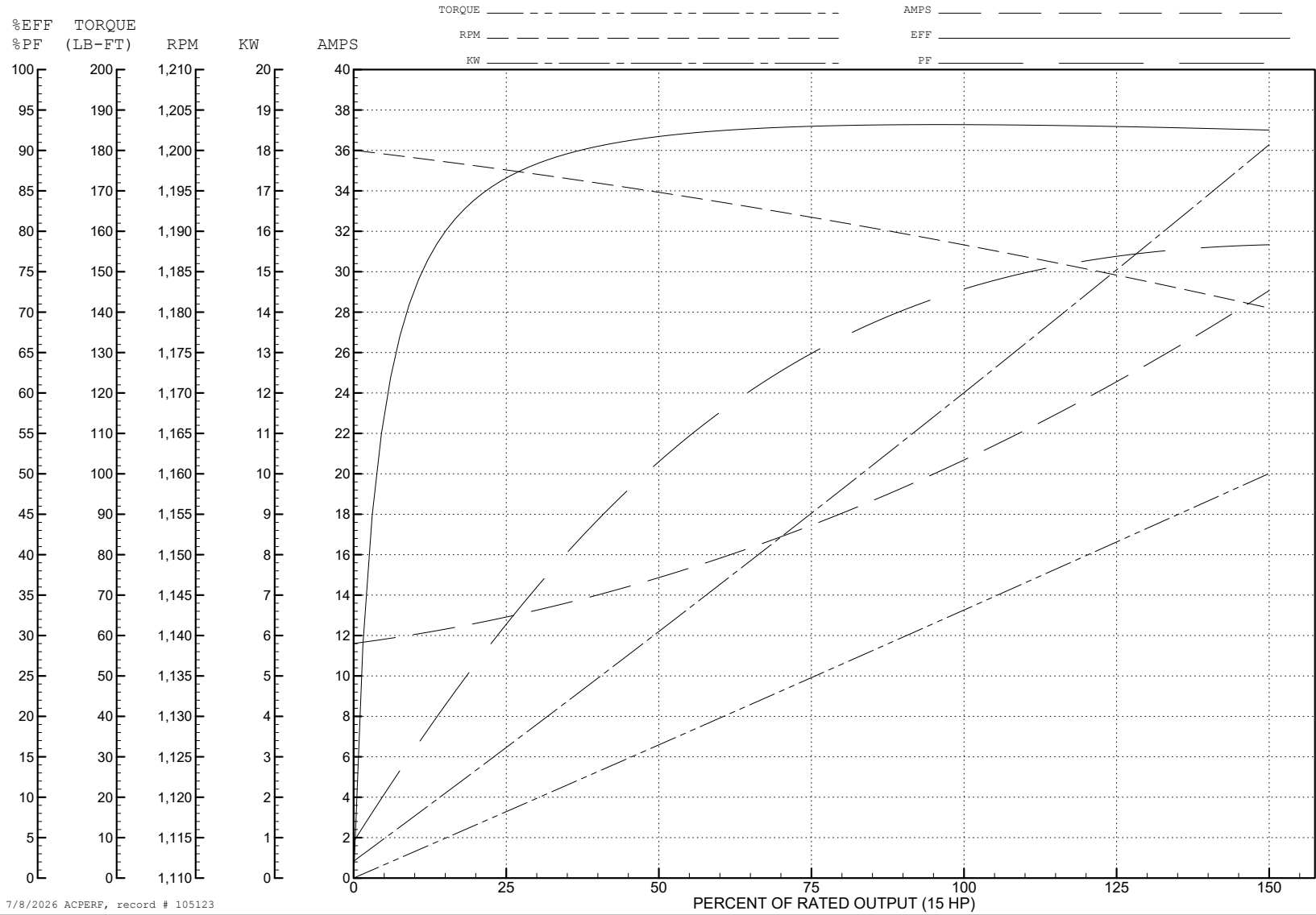
ABB Motors and Mechanical Inc.

WINDING # 10WGZ893

Typical performance - not guaranteed values.

15 HP 3 PH 60 HZ 1188.4 RPM 460 V 1064M

TORQUES (LB-FT): PO=233 PU=93 LR=133 LRA=154



7/8/2026 ACPERF, record # 105123

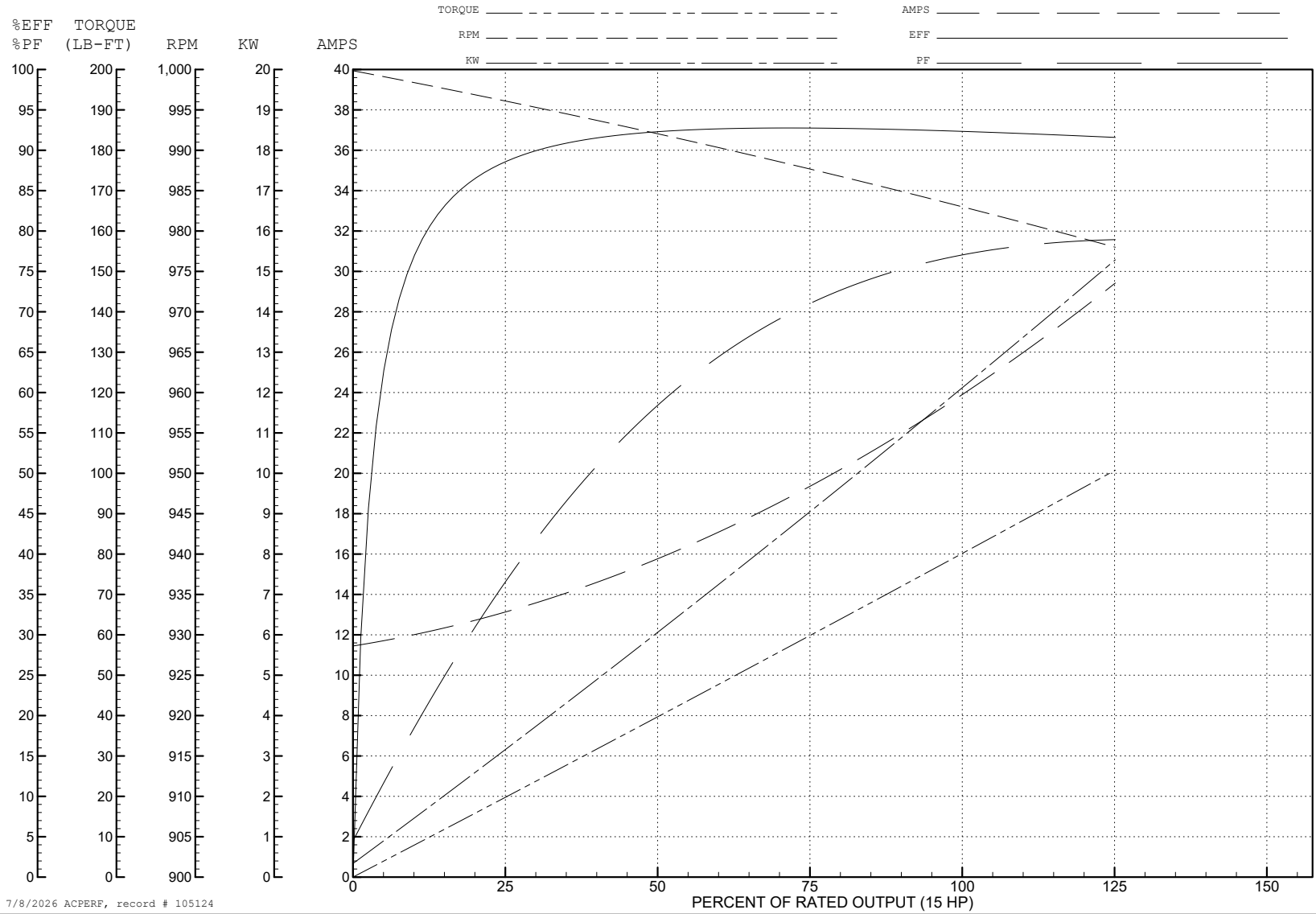
ABB Motors and Mechanical Inc.

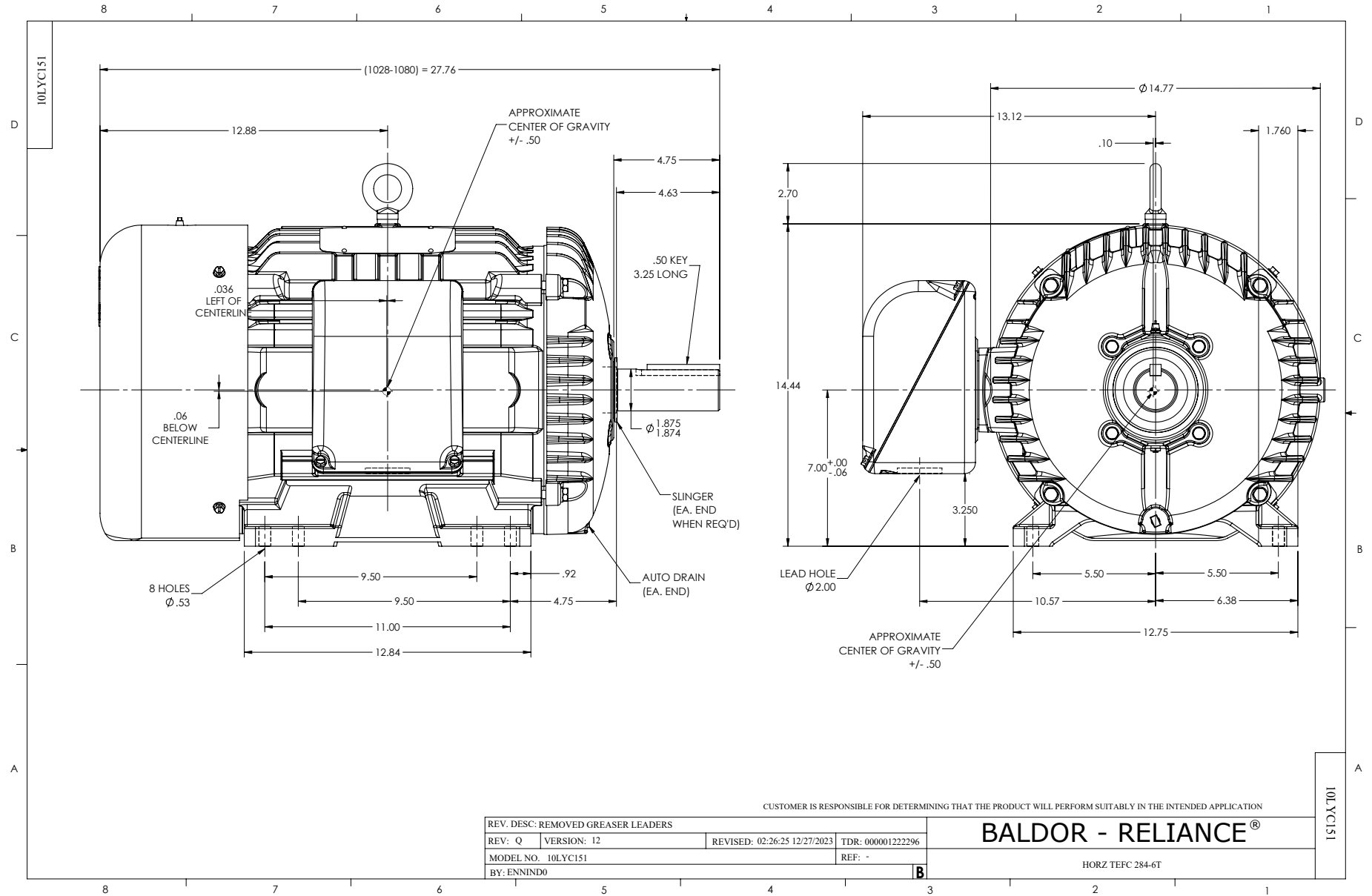
WINDING # 10WGZ893

Typical performance - not guaranteed values.

15 HP 3 PH 50 HZ 983 RPM 380 V 1064M

TORQUES (LB-FT): PO=232 PU=125 LR=141 LRA=154





CUSTOMER IS RESPONSIBLE FOR DETERMINING THAT THE PRODUCT WILL PERFORM SUITABLY IN THE INTENDED APPLICATION

REV. Q	VERSION: 12	REVISED: 02:26:25 12/27/2023	TDR: 000001222296
MODEL NO. 10LYC151		REF: -	
BY: ENNIND0		B	

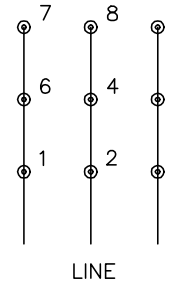
BALDOR - RELIANCE®

HORZ TEFC 284-6T

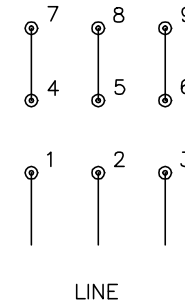
CD0180



LOW VOLTAGE
(2D)



HIGH VOLTAGE
(1D)



NOTES:

1. INTERCHANGE ANY TWO LINE LEADS TO REVERSE ROTATION.
2. OPTIONAL THERMOSTATS ARE PROVIDED WHEN SPECIFIED.
3. ACTUAL NUMBER OF INTERNAL PARALLEL CIRCUITS MAY BE A MULTIPLE OF THOSE SHOWN ABOVE.
4. LEAD COLORS ARE OPTIONAL. LEADS MUST ALWAYS BE NUMBERED AS SHOWN.

CD0180

REV. DESC: ADD CLASS CONN00000007		
REV. LTR: D	VERSION: 01	TDR: 000001099922
FILE: \AAA\00005\148	REVISED: 10: 25: 29 02/19/2019	BY: ENBRIRO
MTL: -	© □	

BALDOR - RELIANCE®

3PH, DV, 9 LEADS, DELTA CONNECTION

SH 1 of 1