

ABB BALDOR RELIANCE III

Customer information packet

GNEM3774T

10HP//7.5KW, 1765//1460 1/MINRPM, 3PH, 60//

Class - None

Division - Not Applicable

Specifications

Enclosure	TEFC
Frame	215T
Frame Material	Iron
Frequency	50.00 Hz 60.00 Hz
Haz Area Class and Group	None
Haz Area Division	Not Applicable
Motor Letter Type	Three Phase
Output @ Frequency	7.500 KW @ 50 HZ 10.000 HP @ 60 HZ
Phase	3
Synchronous Speed @ Frequency	1800 RPM @ 60 HZ
Voltage @ Frequency	208.0 V @ 60 HZ 190.0 V @ 50 HZ 230.0 V @ 60 HZ 380.0 V @ 50 HZ 460.0 V @ 60 HZ
Agency Approvals	WEEE UKCA NEMA PREMIUM (OLD LOGO) NEMA PREMIUM IE3 CURUS CE
Ambient Temperature	40 °C
Auxiliary Box	NO AUXILLARY BOX
Auxiliary Box Lead Termination	None
Base Indicator	Rigid
Bearing Grease Type	Polyrex EM (-20F +300F)
Blower	None
Current @ Voltage	29.400 A @ 190.0 V 26.400 A @ 208.0 V

Part Detail

Revision	E
Type	AC
Mech. spec.	07H002
Base	
Status	PRD/A
Elec. spec.	07WGX598
Layout	07LYH002
Eff. date	05-06-2024
CD Diagram	CD0005
Poles	04
Leads	9#14
Proprietary	False
Created date	04-11-2023

24.600 A @ 230.0 V

14.700 A @ 380.0 V

12.300 A @ 460.0 V

Design Code	A
Drip Cover	No Drip Cover
Duty Rating	CONT
Efficiency @ 100% Load	92.4 %
Electrically Isolated Bearing	Not Electrically Isolated
Feedback Device	NO FEEDBACK
Front Shaft Indicator	None
Heater Indicator	No Heater
High Voltage Full Load Amps	12.3 a
Insulation Class	F
Inverter Code	Not Inverter
KVA Code	J
Lifting Lugs	Standard Lifting Lugs
Locked Bearing Indicator	No Locked Bearing
Motor Lead Quantity/Wire Size	9 @ 14 AWG
Motor Lead Termination	Flying Leads
Motor Standards	NEMA
Motor Type	0750M
Mounting Arrangement	F1
Number of Poles	4
Overall Length	18.45 IN
Power Factor	81
Product Family	General Purpose
Pulley End Bearing Type	Ball
Pulley Face Code	Standard
Pulley Shaft Indicator	Standard
Rodent Screen	None
RoHS Status	ROHS COMPLIANT
Service Factor	1.15
Shaft Diameter	1.375 IN
Shaft Ground Indicator	No Shaft Grounding

Shaft Rotation	Reversible
Shaft Slinger Indicator	No Slinger
Speed	1460 rpm 1765 rpm
Speed Code	Single Speed
Starting Method	Direct on line
Thermal Device - Bearing	None
Thermal Device - Winding	None
Vibration Sensor Indicator	No Vibration Sensor
Winding Thermal 1	None
Winding Thermal 2	None

Nameplate

NP4304L

CAT.NO.	GNEM3774T					
SPEC.	07H002X598G1					
HP	10HP/7.5KW	PH	3			
VOLTS	208-230/460//190/380					
AMPS	26.4-24.6/12.3//29.4/14.7					
R.P.M. (1/MIN)	1765//1460	WT.	89KG	KG		
FRAME	215T	HZ	60//50	I.P.	44	
SER.F.	1.15	CODE	J	DES.	A	CLASS F
NOM.EFF.	92.4//90.4	% (100%)				
P.F.	81	IC411, 10:1 VT				
RATING	40C AMB-S1 CONT	CC	010A			
DE	6307	ODE	6206			
ENCL	TEFC	SN				
	SFA 30.4-28.4/14.2//33.8/14.7					
	IE3-50HZ 92.0(75%),93.6(50%)					
	IE3-60HZ 92.5(75%),93.6(50%)					

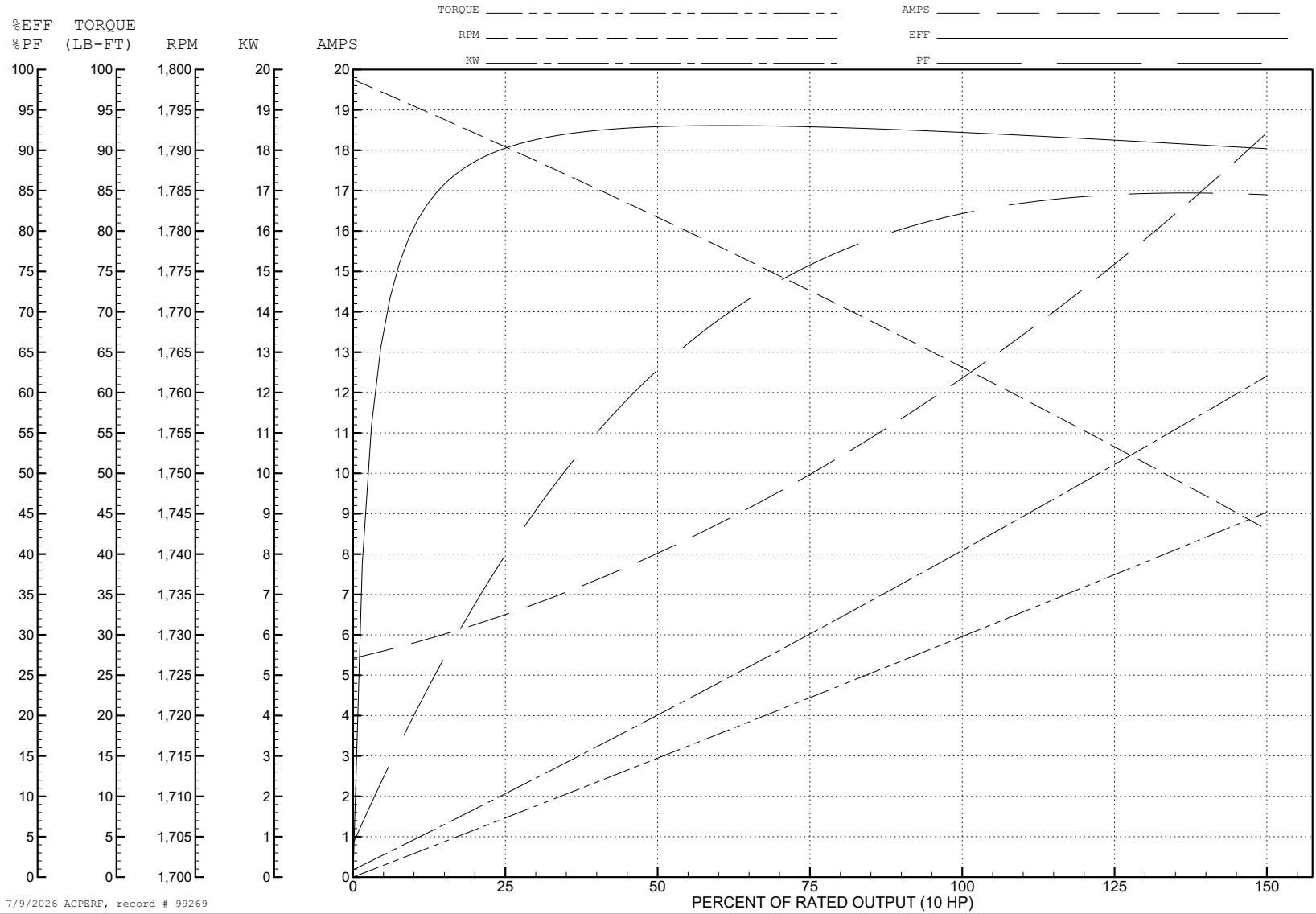
ABB Motors and Mechanical Inc.

WINDING # 07WGX598

Typical performance - not guaranteed values.

10 HP 3 PH 60 HZ 1764 RPM 460 V 0750M

TORQUES (LB-FT): PO=94.2 PU=56.3 LR=62.4 LRA=95.7



7/9/2026 ACPERF, record # 99269

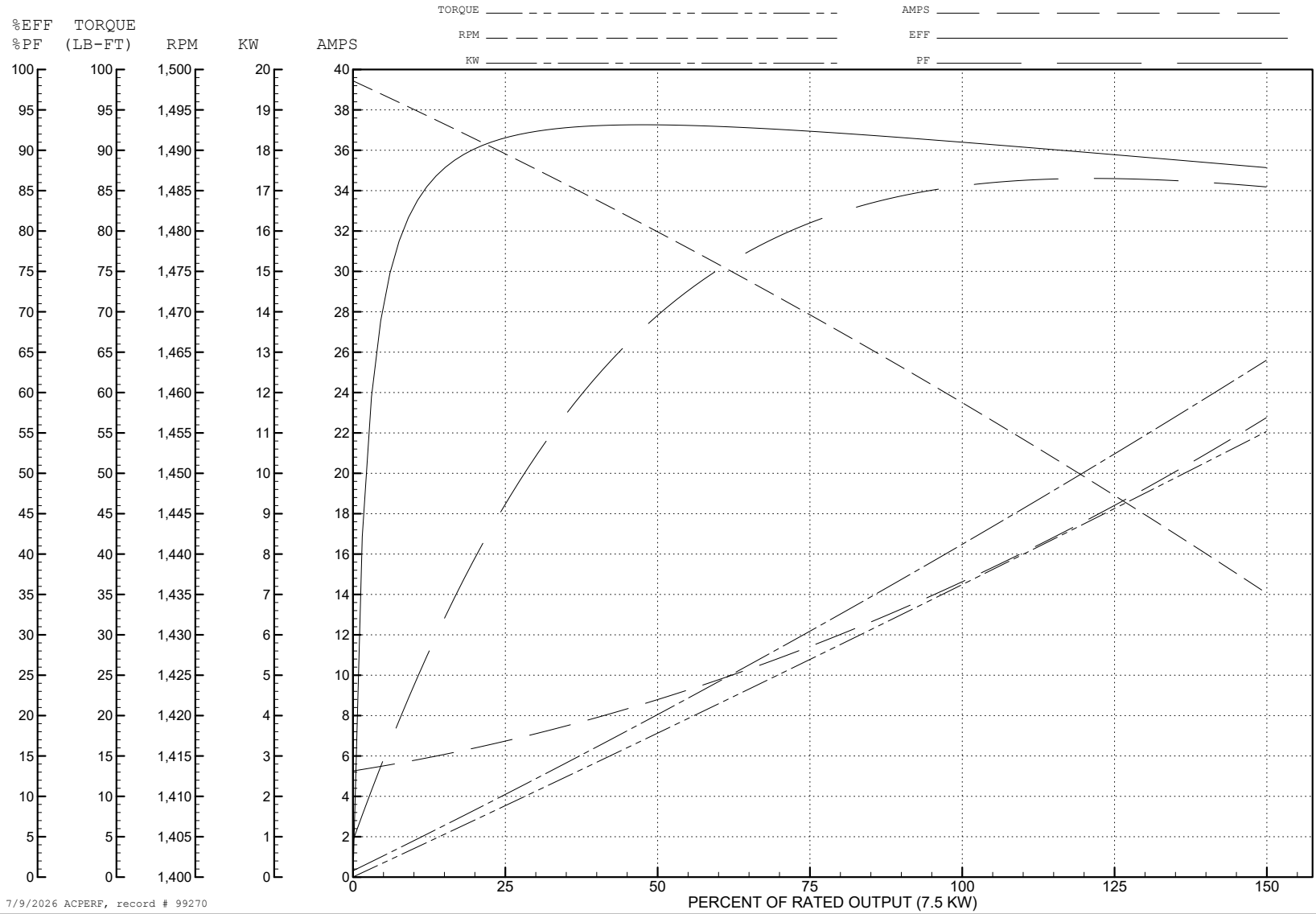
ABB Motors and Mechanical Inc.

WINDING # 07WGX598

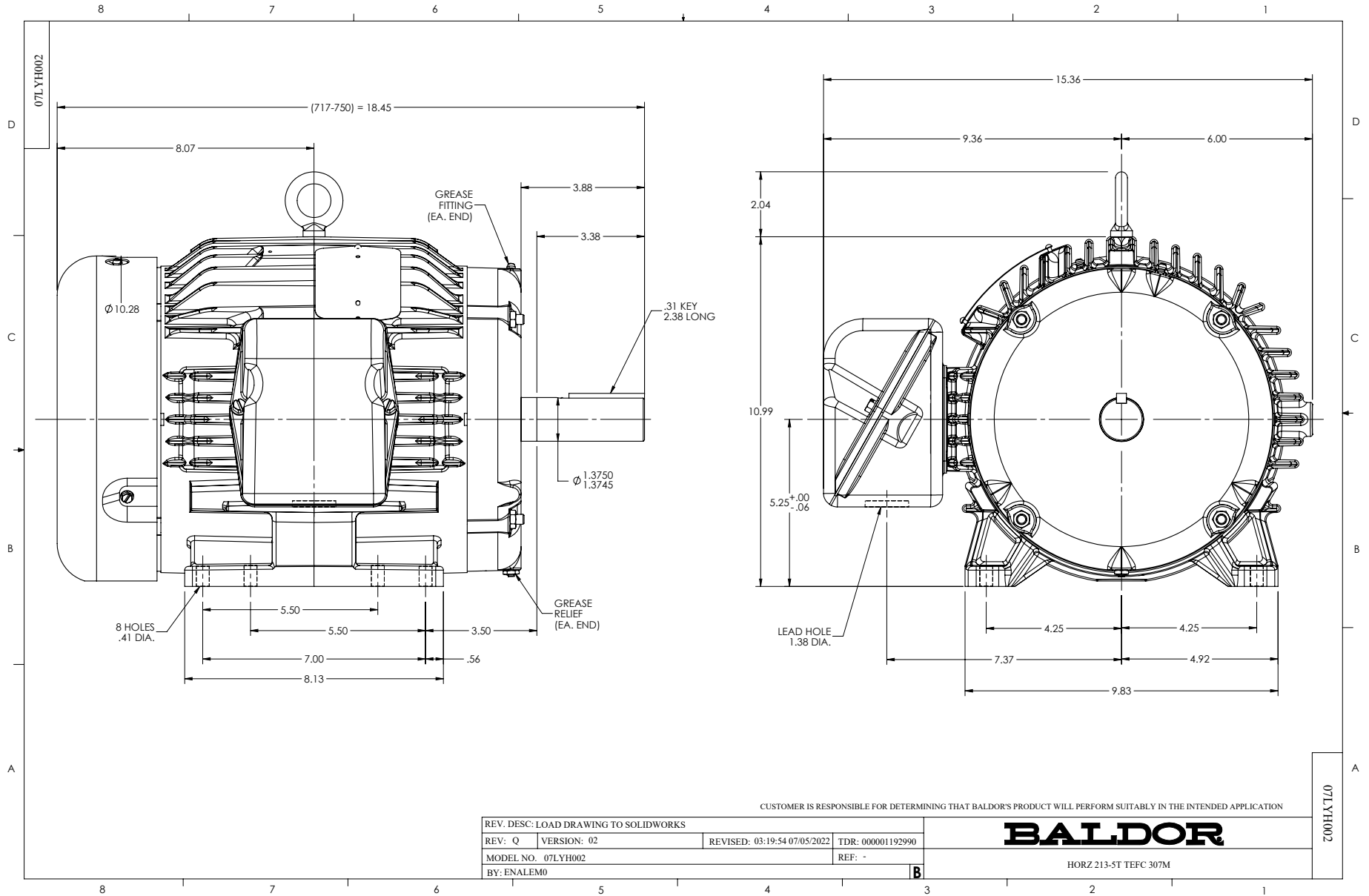
Typical performance - not guaranteed values.

7.5 KW 3 PH 50 HZ 1460 RPM 380 V 0750M

TORQUES (LB-FT): PO=89.9 PU=58.1 LR=64.4 LRA=92.9



7/9/2026 ACPERF, record # 99270



CD0005

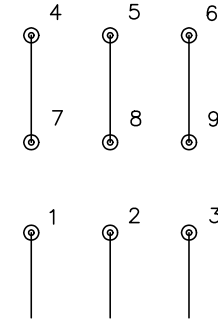


LOW VOLTAGE
(2Y)



LINE

HIGH VOLTAGE
(1Y)



LINE

NOTES:

1. INTERCHANGE ANY TWO LINE LEADS TO REVERSE ROTATION.
2. OPTIONAL THERMOSTATS ARE PROVIDED WHEN SPECIFIED.
3. ACTUAL NUMBER OF INTERNAL PARALLEL CIRCUITS MAY BE A MULTIPLE OF THOSE SHOWN ABOVE.
4. LEAD COLORS ARE OPTIONAL. LEADS MUST ALWAYS BE NUMBERED AS SHOWN.

CD0005

REV. DESC: REVISE TO SHOW OPTIONAL COLORS

REV. LTR: E BY: JLP REVISED: 01/19/99 10:15 TDR: 0171435

500000

FILE: AAA00005140

MDL: -

MTL: -

BALDOR ELECTRIC Co.

3PH, DV, 9 LEADS