

BALDOR • RELIANCE

Customer information packet

GNEM3768T-G

5HP//3.7KW, 1160//950RPM, 3PH, 60//50HZ, 215

Class - None

Division - Not Applicable

Specifications

Enclosure	TEFC
Frame	215T
Frame Material	Iron
Frequency	50.00 Hz 60.00 Hz
Haz Area Class and Group	None
Haz Area Division	Not Applicable
Motor Letter Type	Three Phase
Output @ Frequency	5.000 HP @ 60 HZ 3.700 KW @ 50 HZ
Phase	3
Synchronous Speed @ Frequency	1200 RPM @ 60 HZ
Voltage @ Frequency	190.0 V @ 50 HZ 208.0 V @ 60 HZ 230.0 V @ 60 HZ 380.0 V @ 50 HZ 460.0 V @ 60 HZ
Agency Approvals	CE WEEE UKCA CURUSEEV IE3 NEMA PREMIUM
Ambient Temperature	40 °C
Auxillary Box	No Auxillary Box
Auxillary Box Lead Termination	None
Base Indicator	Rigid
Bearing Grease Type	Polyrex EM (-20F +300F)
Blower	None
Current @ Voltage	8.600 A @ 380.0 V 7.300 A @ 460.0 V 17.200 A @ 190.0 V 15.800 A @ 208.0 V

Part detail

Revision	B
Type	AC
Mech. spec.	07L783
Base	
Status	PRD/A
Elec. spec.	07WGX823
Layout	07LYL783
Eff. date	05-06-2024
CD Diagram	CD0005
Poles	06
Leads	9#14
Proprietary	False
Created date	09-14-2023

	14.600 A @ 230.0 V
Design Code	A
Drip Cover	No Drip Cover
Duty Rating	CONT
Efficiency @ 100% Load	89.5 %
Electrically Isolated Bearing	Not Electrically Isolated
Feedback Device	NO FEEDBACK
Front Shaft Indicator	None
Heater Indicator	No Heater
High Voltage Full Load Amps	7.3 a
Insulation Class	F
Inverter Code	Inverter Duty
KVA Code	K
Lifting Lugs	Standard Lifting Lugs
Locked Bearing Indicator	Locked Bearing
Motor Lead Quantity/Wire Size	9 @ 14 AWG
Motor Lead Termination	Flying Leads
Motor Standards	NEMA
Motor Type	0748M
Mounting Arrangement	F1
Number of Poles	6
Overall Length	18.45 IN
Power Factor	72
Product Family	General Purpose
Pulley End Bearing Type	Ball
Pulley Face Code	Standard
Pulley Shaft Indicator	Standard
Rodent Screen	None
RoHS Status	ROHS COMPLIANT
Service Factor	1.15
Shaft Diameter	1.375 IN
Shaft Ground Indicator	Shaft Grounding
Shaft Rotation	Reversible
Shaft Slinger Indicator	No Slinger

Speed	1160 rpm
	950 rpm
Speed Code	Single Speed
Starting Method	Direct on line
Thermal Device - Bearing	None
Thermal Device - Winding	None
Vibration Sensor Indicator	No Vibration Sensor
Winding Thermal 1	None
Winding Thermal 2	None

Nameplate

NP4304L										
CAT.NO.	GNEM3768T-G									
SPEC.	07L783X823G1									
HP	5HP//3.7KW				PH	3				
VOLTS	208-230/460//190/380									
AMPS	15.8-14.6/7.3//17.2/8.6									
R.P.M. (1/MIN)	1160//950				WT.	105KG	KG			
FRAME	215T	HZ	60//50		I.P.	44				
SER.F.	1.15	CODE	K	DES.	A	CLASS	H			
NOM.EFF.	89.5//86.5		% (100%)							
P.F.	72	IC411, 10:1 VT								
RATING	40C AMB-S1 CONT			CC	010A					
DE	6307		ODE	6206						
ENCL	TEFC	SN								
	SFA 17.8-16.4/8.2//19.8/9.9									
	IE3-50HZ 90.0(75%),89.4(50%)									
	IE3-60HZ 90.6(75%),89.9(50%)									

AC Induction Motor Performance Data

Record # 102702

Typical performance - not guaranteed values

Winding: 07WGX823-R042		Type: 0748M	Enclosure: TEFC		
Nameplate Data			460 V, 60 Hz: High Voltage Connection		
Rated Output (HP)	5HP//3.7KW		Full Load Torque	22.6 LB-FT	
Volts	208-230/460//190/380		Start Configuration	direct on line	
Full Load Amps	15.8-14.6/7.3//17.2/8.6		Breakdown Torque	77.4 LB-FT	
R.P.M.	1160//950		Pull-up Torque	46.7 LB-FT	
Hz	60//50	Phase	3	Locked-rotor Torque	56.1 LB-FT
NEMA Design Code	A	KVA Code	K	Starting Current	51.9 A
Service Factor (S.F.)	1.15		No-load Current	3.7 A	
NEMA Nom. Eff.	89.5	Power Factor	72	Line-line Res. @ 25°C	1.68 Ω
Rating - Duty	40C AMB-CONT		Temp. Rise @ Rated Load	50°C	
S.F. Amps	17.8-16.4/8.2//19.8/9.9		Temp. Rise @ S.F. Load	61°C	
			Locked-rotor Power Factor	21.8	
			Rotor inertia	1.19 lb-ft ²	

Load Characteristics 460 V, 60 Hz, 5 HP

% of Rated Load	25	50	75	100	125	150	S.F.
Power Factor	34	53	65	72	75	77	76
Efficiency	85.7	89.9	90.6	90.3	89.2	87.7	89.9
Speed	1190	1181	1173	1163	1151	1139	1161
Line amperes	4.01	4.78	5.85	7.25	8.71	10.3	7.82

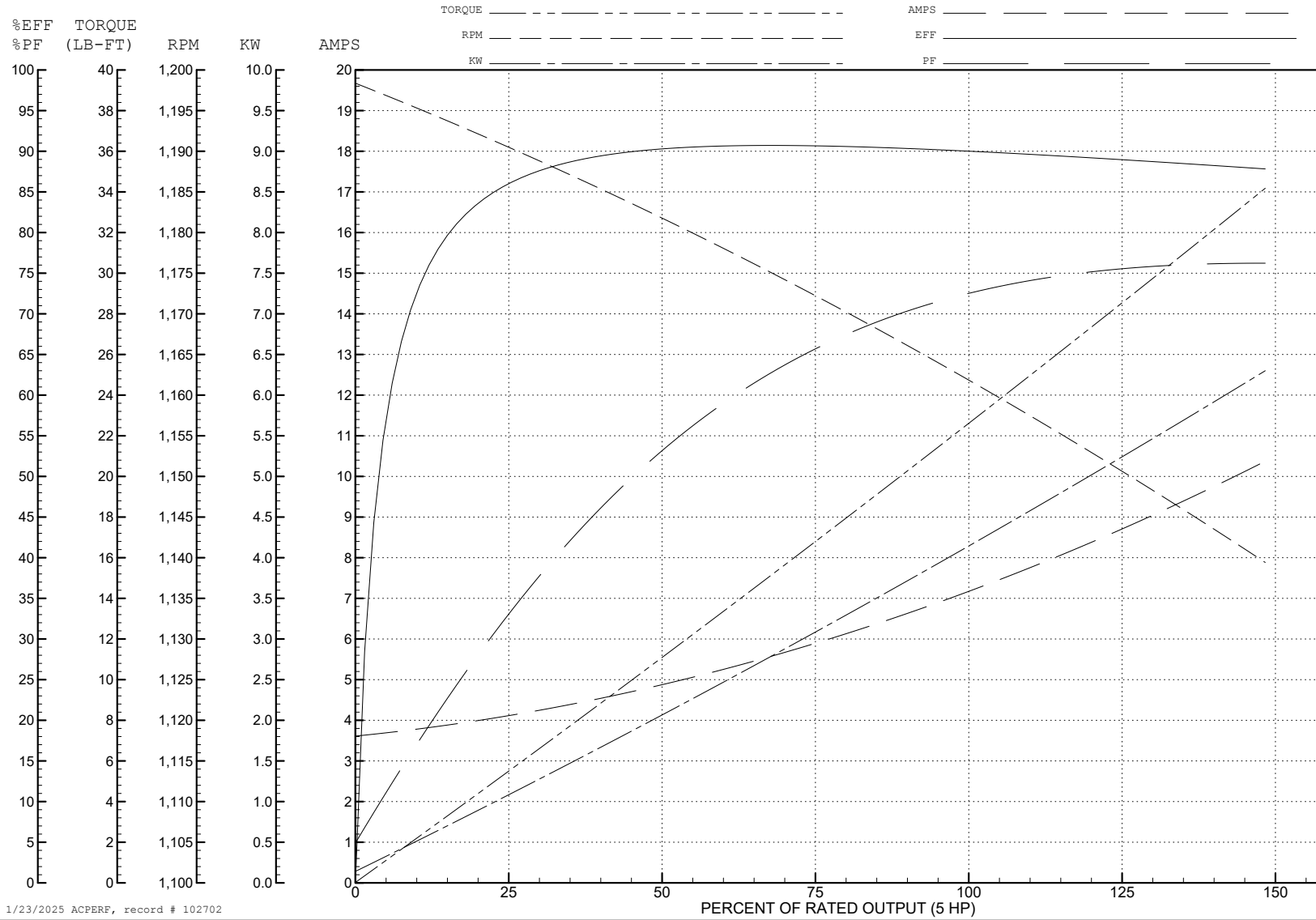
ABB Motors and Mechanical Inc.

WINDING # 07WGx823

5 HP 3 PH 60 HZ 1163 RPM 460 V 0748M

Typical performance - not guaranteed values.

TORQUES (LB-FT): PO=77.4 PU=46.7 LR=56.1 LRA=51.9



1/23/2025 ACPERF, record # 102702

AC Induction Motor Performance Data

Record # 102703

Typical performance - not guaranteed values

Winding: 07WGX823-R042		Type: 0748M	Enclosure: TEFC	
Nameplate Data			380 V, 50 Hz: High Voltage Connection	
Rated Output (HP)	5HP//3.7KW		Full Load Torque	27.78 LB-FT
Volts	208-230/460//190/380		Start Configuration	direct on line
Full Load Amps	15.8-14.6/7.3//17.2/8.6		Breakdown Torque	74.8 LB-FT
R.P.M.	1160//950		Pull-up Torque	51.5 LB-FT
Hz	60//50	Phase 3	Locked-rotor Torque	61.9 LB-FT
NEMA Design Code	A	KVA Code K	Starting Current	50.8 A
Service Factor (S.F.)	1.15		No-load Current	3.64 A
NEMA Nom. Eff.	89.5	Power Factor 72	Line-line Res. @ 25°C	1.68 Ω
Rating - Duty	40C AMB-CONT		Temp. Rise @ Rated Load	68°C
S.F. Amps	17.8-16.4/8.2//19.8/9.9		Temp. Rise @ S.F. Load	90°C
			Locked-rotor Power Factor	25.2
			Rotor inertia	1.19 lb-ft ²

Load Characteristics 380 V, 50 Hz, 5 HP

% of Rated Load	25	50	75	100	125	150	S.F.
Power Factor	40	60	71	75	76	75	76
Efficiency	87.7	89.4	90	88.5	86	82.1	87
Speed	989	978	967	954	936	910	943
Line amperes	4.07	5.15	6.65	8.61	10.83	13.85	9.94

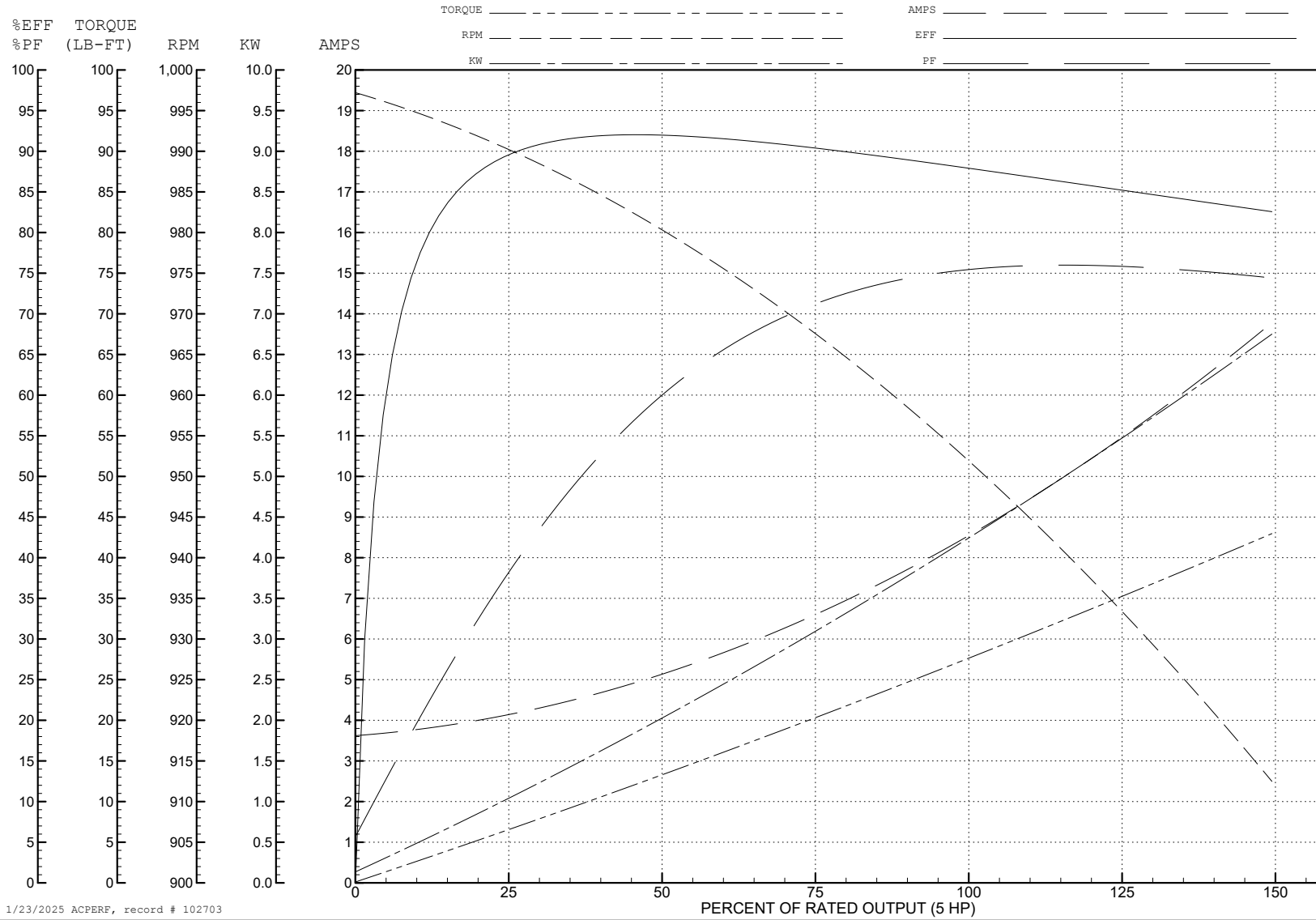
ABB Motors and Mechanical Inc.

WINDING # 07WGX823

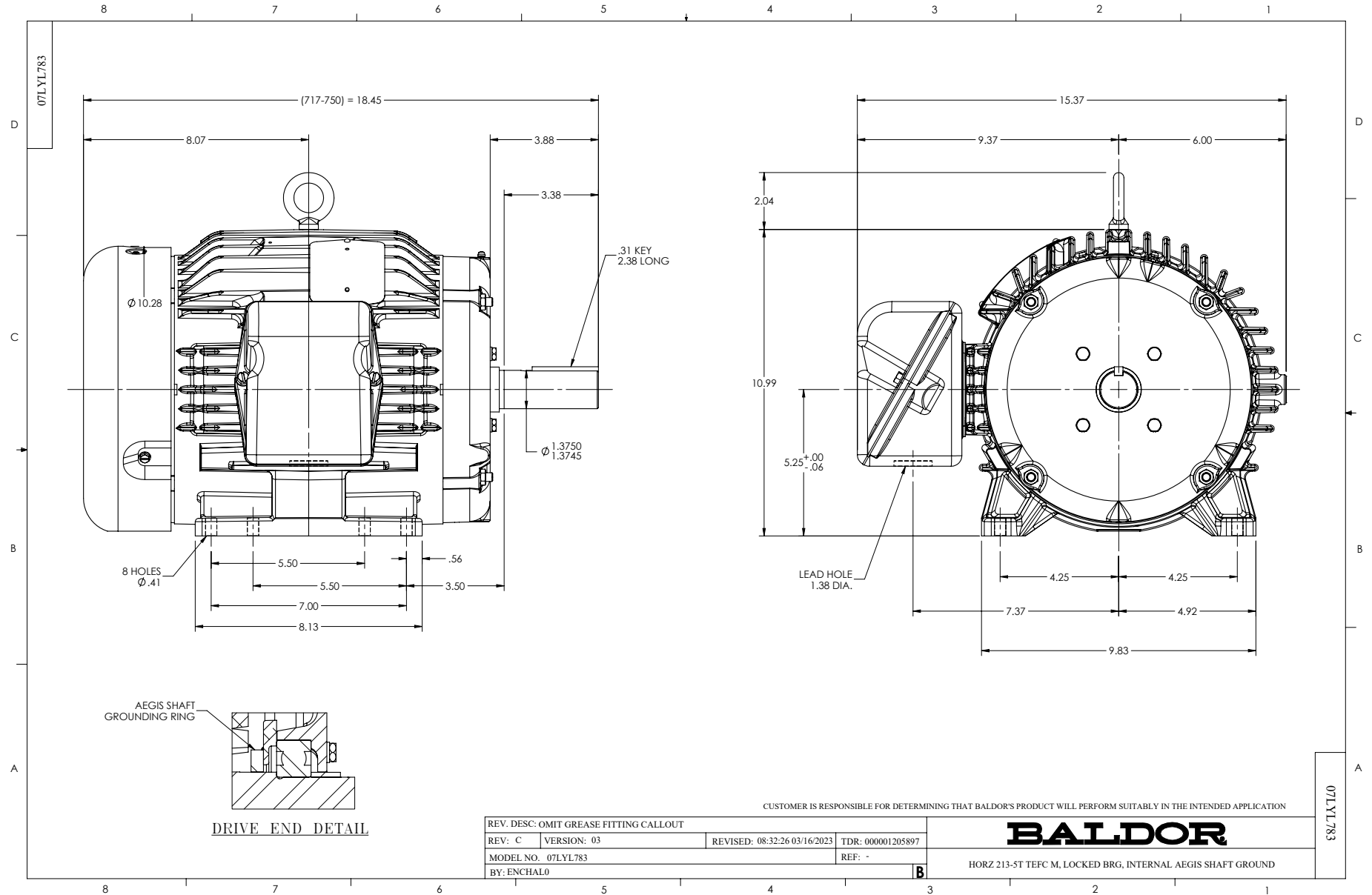
Typical performance - not guaranteed values.

5 HP 3 PH 50 HZ 954 RPM 380 V 0748M

TORQUES (LB-FT): PO=74.8 PU=51.5 LR=61.9 LRA=50.8



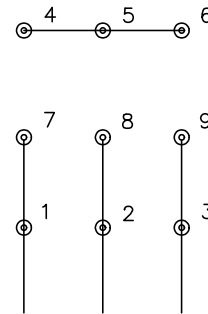
1/23/2025 ACPERF, record # 102703



CD0005

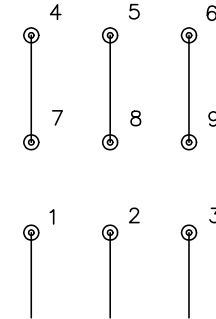


LOW VOLTAGE
(2Y)



LINE

HIGH VOLTAGE
(1Y)



LINE

NOTES:

1. INTERCHANGE ANY TWO LINE LEADS TO REVERSE ROTATION.
2. OPTIONAL THERMOSTATS ARE PROVIDED WHEN SPECIFIED.
3. ACTUAL NUMBER OF INTERNAL PARALLEL CIRCUITS MAY BE A MULTIPLE OF THOSE SHOWN ABOVE.
4. LEAD COLORS ARE OPTIONAL. LEADS MUST ALWAYS BE NUMBERED AS SHOWN.

CD0005

REV. DESC: REVISE TO SHOW OPTIONAL COLORS			
REV. LTR: E	BY: JLP	REVISED: 01/19/99 10:15	TDR: 0171435
S00000		FILE: AAA00005140	MDL: -
		MTL: -	

BALDOR ELECTRIC Co.

3PH, DV, 9 LEADS