

# ABB BALDOR RELIANCE III

---

## Customer information packet

### GNEM3710T

7.5HP, 1760//1460RPM, 3PH, 60//50HZ, 213T, 37

Class - None

Division - Not Applicable

**Specifications**

<b>Enclosure</b>	TEFC
<b>Frame</b>	213T
<b>Frame Material</b>	Steel
<b>Frequency</b>	50.00 Hz 60.00 Hz
<b>Haz Area Class and Group</b>	None
<b>Haz Area Division</b>	Not Applicable
<b>Motor Letter Type</b>	Three Phase
<b>Output @ Frequency</b>	7.500 HP @ 60 HZ 7.500 HP @ 50 HZ
<b>Phase</b>	3
<b>Synchronous Speed @ Frequency</b>	1800 RPM @ 60 HZ
<b>Voltage @ Frequency</b>	190.0 V @ 50 HZ 208.0 V @ 60 HZ 230.0 V @ 60 HZ 380.0 V @ 50 HZ 460.0 V @ 60 HZ
<b>Agency Approvals</b>	CE UKCA WEEE CURUS IE3 NEMA PREMIUM NEMA PREMIUM (OLD LOGO)
<b>Ambient Temperature</b>	40 °C
<b>Auxiliary Box</b>	NO AUXILLARY BOX
<b>Auxiliary Box Lead Termination</b>	None
<b>Base Indicator</b>	Rigid
<b>Bearing Grease Type</b>	Polyrex EM (-20F +300F)
<b>Blower</b>	None
<b>Current @ Voltage</b>	22.800 A @ 190.0 V 9.800 A @ 460.0 V

**Part Detail**

<b>Revision</b>	K
<b>Type</b>	AC
<b>Mech. spec.</b>	37H244
<b>Base</b>	
<b>Status</b>	PRD/A
<b>Elec. spec.</b>	37WGZ616
<b>Layout</b>	37LYH244
<b>Eff. date</b>	05-13-2024
<b>CD Diagram</b>	CD0005
<b>Poles</b>	04
<b>Leads</b>	9#14
<b>Proprietary</b>	False
<b>Created date</b>	02-16-2017

20.400 A @ 208.0 V

19.600 A @ 230.0 V

11.400 A @ 380.0 V

<b>Design Code</b>	A
<b>Drip Cover</b>	No Drip Cover
<b>Duty Rating</b>	CONT
<b>Efficiency @ 100% Load</b>	91.7 %
<b>Electrically Isolated Bearing</b>	Not Electrically Isolated
<b>Feedback Device</b>	NO FEEDBACK
<b>Front Face Code</b>	Standard
<b>Front Shaft Indicator</b>	None
<b>Heater Indicator</b>	No Heater
<b>High Voltage Full Load Amps</b>	9.8 a
<b>Insulation Class</b>	F
<b>Inverter Code</b>	Inverter Ready
<b>KVA Code</b>	K
<b>Lifting Lugs</b>	Standard Lifting Lugs
<b>Locked Bearing Indicator</b>	No Locked Bearing
<b>Motor Lead Exit</b>	Ko Box
<b>Motor Lead Quantity/Wire Size</b>	9 @ 14 AWG
<b>Motor Lead Termination</b>	Flying Leads
<b>Motor Standards</b>	NEMA
<b>Motor Type</b>	3742M
<b>Mounting Arrangement</b>	F1
<b>Number of Poles</b>	4
<b>Overall Length</b>	19.02 IN
<b>Power Factor</b>	77
<b>Product Family</b>	General Purpose
<b>Pulley End Bearing Type</b>	Ball
<b>Pulley Face Code</b>	Standard
<b>Pulley Shaft Indicator</b>	Standard
<b>Rodent Screen</b>	None
<b>RoHS Status</b>	ROHS COMPLIANT
<b>Service Factor</b>	1.15

<b>Shaft Diameter</b>	1.375 IN
<b>Shaft Extension Location</b>	Pulley End
<b>Shaft Ground Indicator</b>	No Shaft Grounding
<b>Shaft Rotation</b>	Reversible
<b>Shaft Slinger Indicator</b>	No Slinger
<b>Speed</b>	1460 rpm 1760 rpm
<b>Speed Code</b>	Single Speed
<b>Starting Method</b>	Direct on line
<b>Thermal Device - Bearing</b>	None
<b>Thermal Device - Winding</b>	None
<b>Vibration Sensor Indicator</b>	No Vibration Sensor
<b>Winding Thermal 1</b>	None
<b>Winding Thermal 2</b>	None

**Nameplate**

**NP4304L**

<b>CAT.NO.</b>	GNEM3710T					
<b>SPEC.</b>	37H244Z616G1					
<b>HP</b>	7.5/5.5KW	<b>PH</b>	3			
<b>VOLTS</b>	208-230/460//190/380					
<b>AMPS</b>	20.4-19.6/9.8//22.8/11.4					
<b>R.P.M. (1/MIN)</b>	1760//1460			<b>WT.</b>	67KG	<b>KG</b>
<b>FRAME</b>	213T	<b>HZ</b>	60//50	<b>I.P.</b>	44	
<b>SER.F.</b>	1.15	<b>CODE</b>	K	<b>DES.</b>	A	<b>CLASS</b> F
<b>NOM.EFF.</b>	91.7//89.6		<b>% (100%)</b>			
<b>P.F.</b>	77	IC411, 10:1 VT				
<b>RATING</b>	40C AMB-S1 CONT		<b>CC</b>	010A		
<b>DE</b>	6307	<b>ODE</b>	6206			
<b>ENCL</b>	TEFC	<b>SN</b>				
	IE3-50HZ-92.1(75%)91.9(50%)					
	IE3-60HZ-92.2(75%)91.1(50%)					

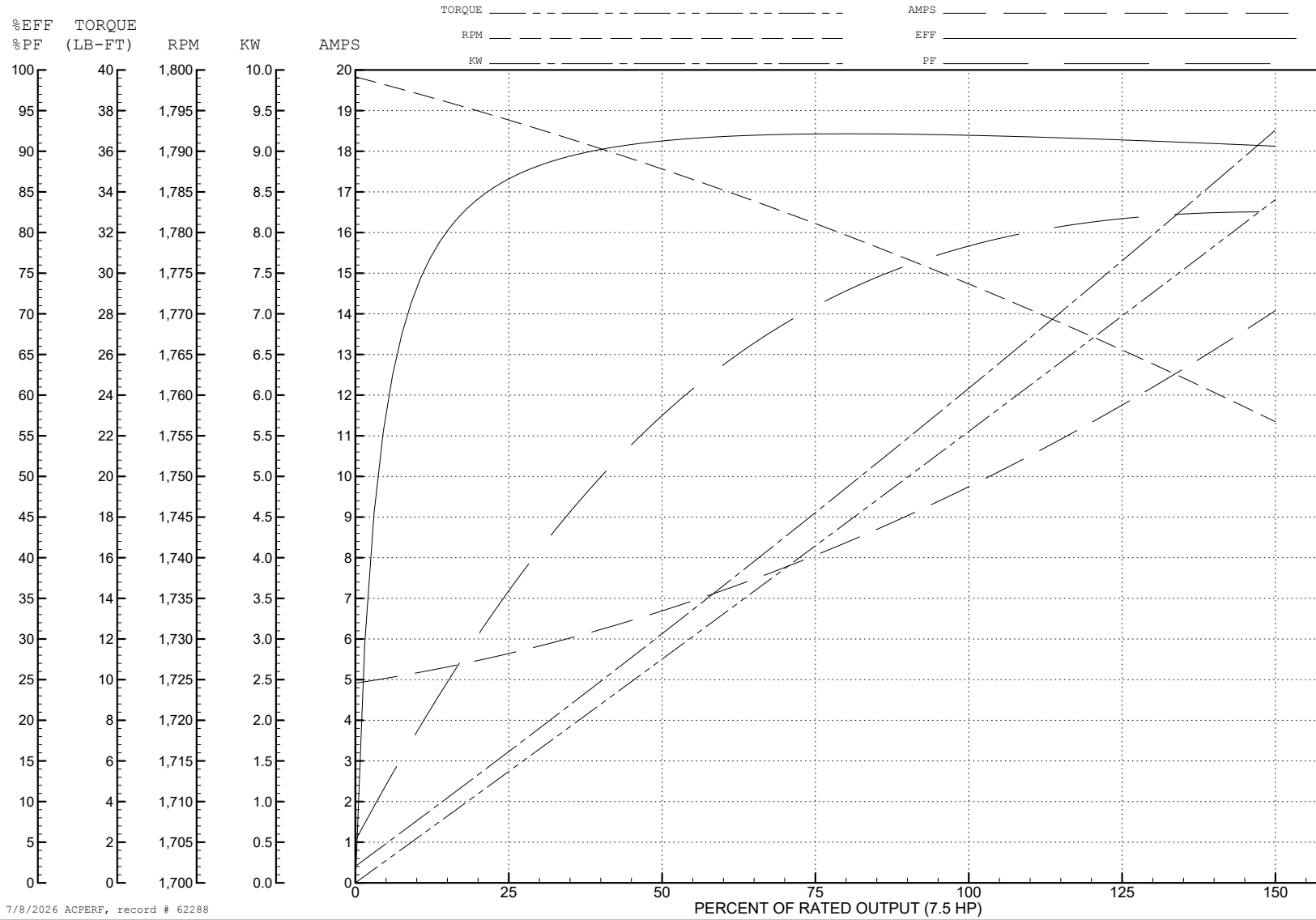
ABB Motors and Mechanical Inc.

WINDING # 37WGZ616

Typical performance - not guaranteed values.

7.5 HP 3 PH 60 HZ 1774 RPM 460 V 3742M

TORQUES (LB-FT): PO=82.37 PU=38.15 LR=50.17 LRA=82.21



7/8/2026 ACPERF, record # 62288

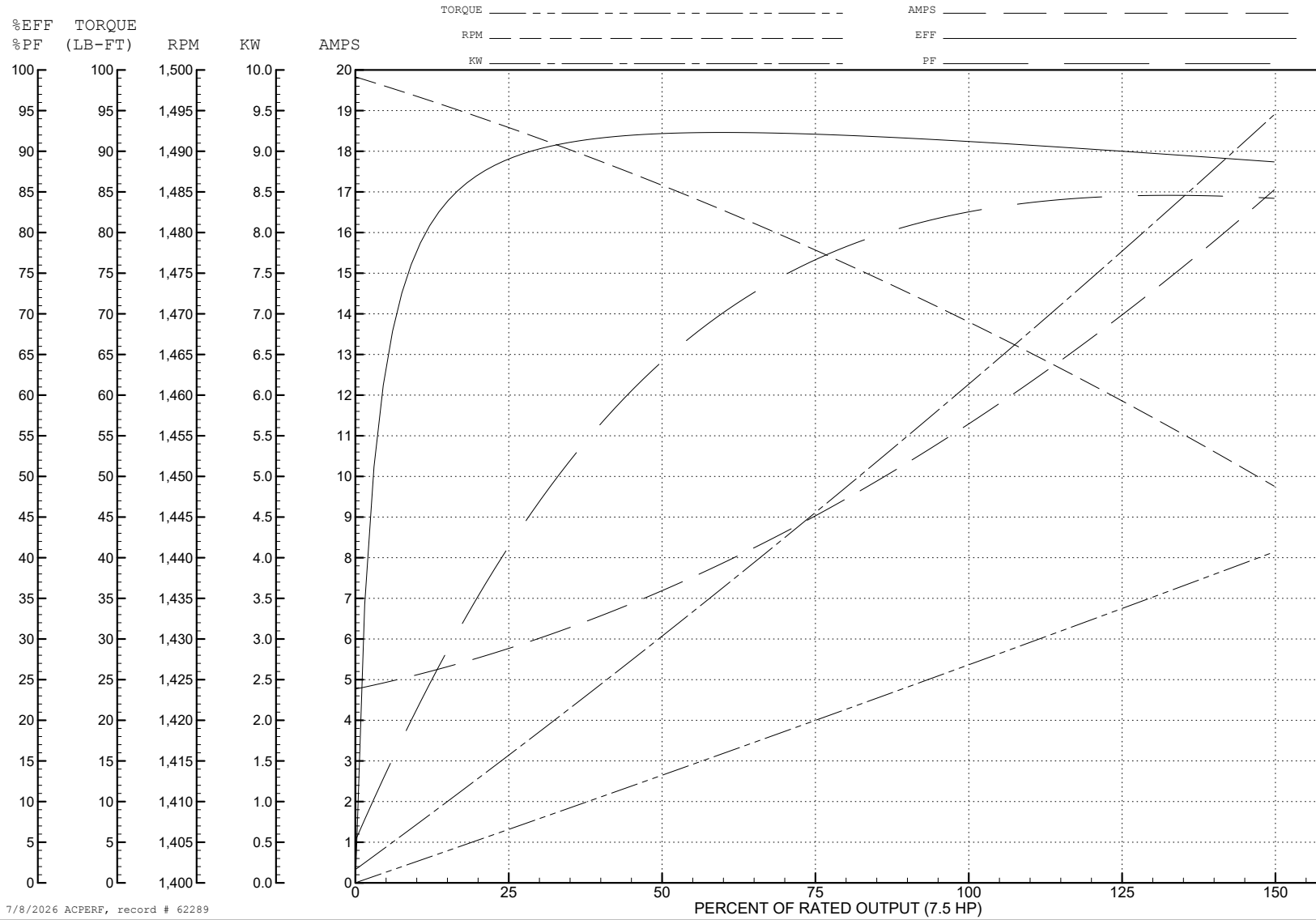
ABB Motors and Mechanical Inc.

WINDING # 37WGZ616

Typical performance - not guaranteed values.

7.5 HP 3 PH 50 HZ 1469 RPM 380 V 3742M

TORQUES (LB-FT): PO=78.35 PU=39.22 LR=51.57 LRA=79.58



7/8/2026 ACPERF, record # 62289

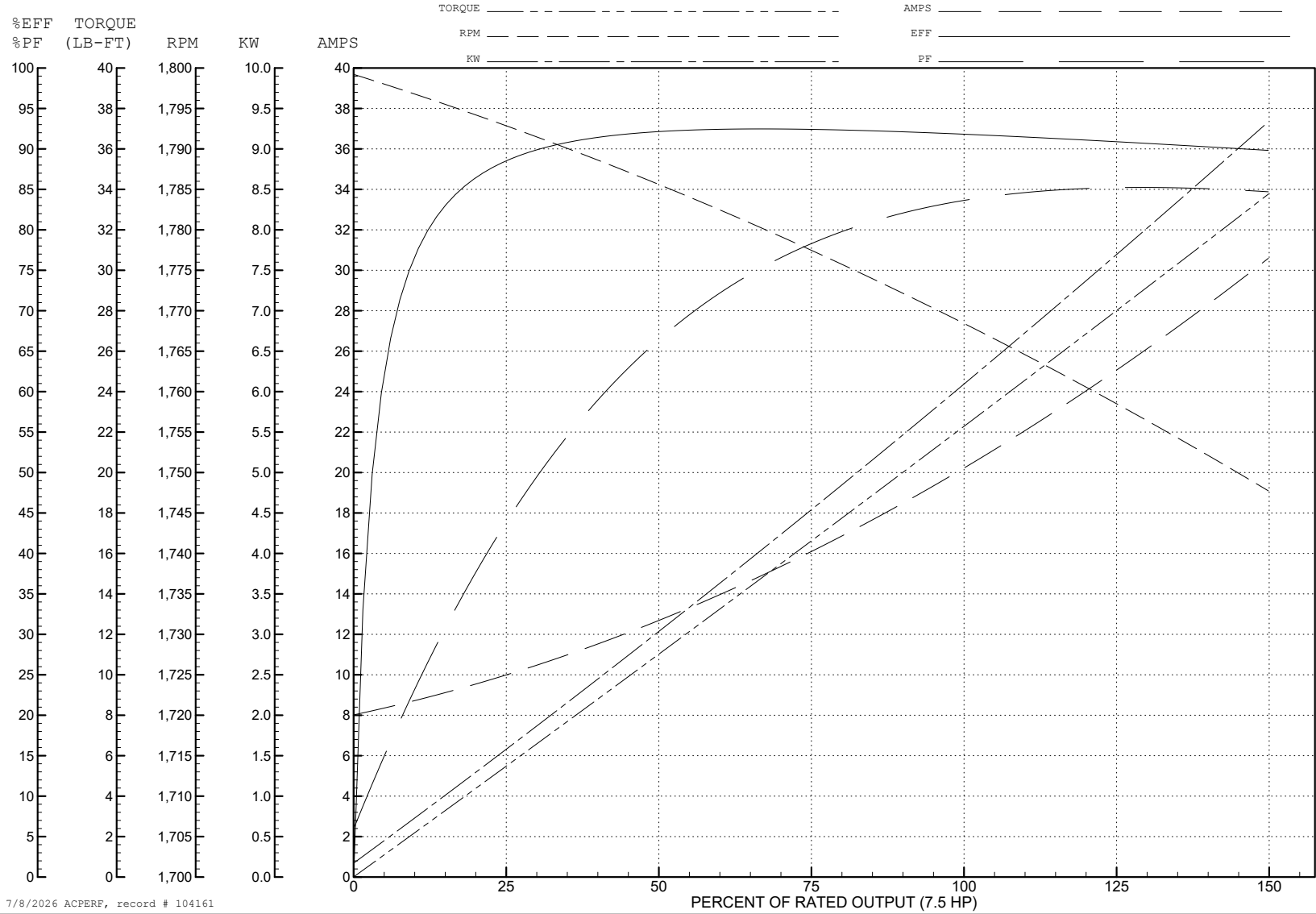
ABB Motors and Mechanical Inc.

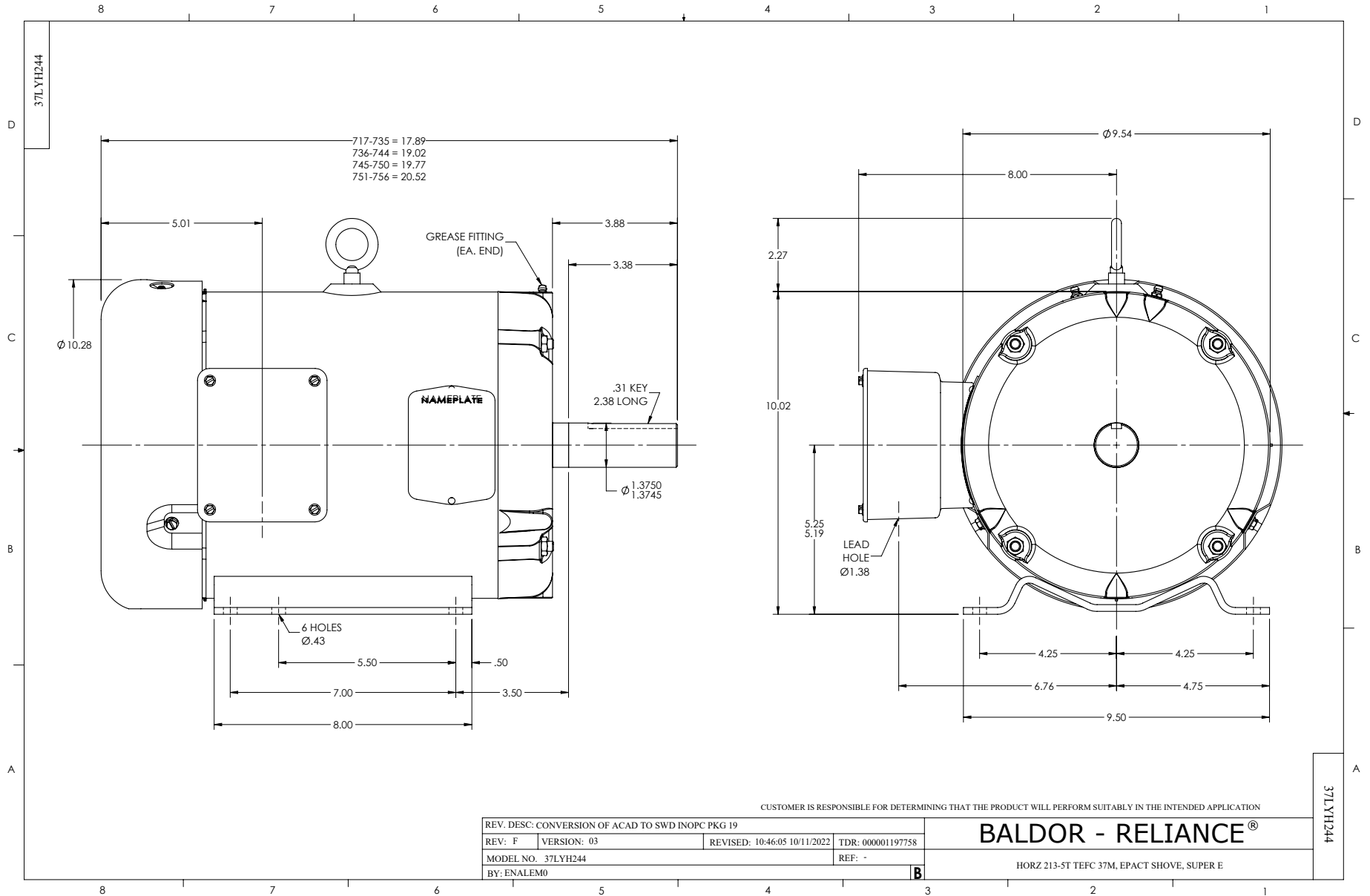
WINDING # 37WGZ616

Typical performance - not guaranteed values.

7.5 HP 3 PH 60 HZ 1769 RPM 208 V 3742M

TORQUES (LB-FT): PO=66.5 PU=30.3 LR=39.8 LRA=146

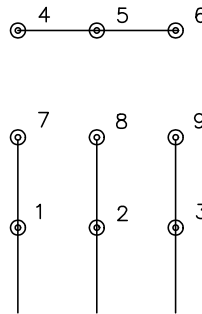




CD0005

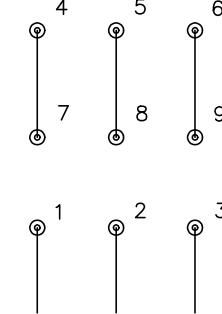


LOW VOLTAGE  
(2Y)



LINE

HIGH VOLTAGE  
(1Y)



LINE

**NOTES:**

1. INTERCHANGE ANY TWO LINE LEADS TO REVERSE ROTATION.
2. OPTIONAL THERMOSTATS ARE PROVIDED WHEN SPECIFIED.
3. ACTUAL NUMBER OF INTERNAL PARALLEL CIRCUITS MAY BE A MULTIPLE OF THOSE SHOWN ABOVE.
4. LEAD COLORS ARE OPTIONAL. LEADS MUST ALWAYS BE NUMBERED AS SHOWN.

CD0005

REV. DESC: REVISE TO SHOW OPTIONAL COLORS			
REV. LTR: E	BY: JLP	REVISED: 01/19/99 10:15	TDR: 0171435
S00000		FILE: AAA00005140	MDL: -
		MTL: -	

**BALDOR ELECTRIC Co.**

3PH, DV, 9 LEADS