



Customer information packet

GNEM3708T

5HP//3.7KW, 1165//960RPM, 3PH, 60//50HZ, 215

Class - None

Division - Not Applicable

Specifications

Enclosure	TEFC
Frame	215T
Frame Material	Steel
Frequency	50.00 Hz 60.00 Hz
Haz Area Class and Group	None
Haz Area Division	Not Applicable
Motor Letter Type	Three Phase
Output @ Frequency	5.000 HP @ 60 HZ 3.700 KW @ 50 HZ
Phase	3
Synchronous Speed @ Frequency	1200 RPM @ 60 HZ
Voltage @ Frequency	190.0 V @ 50 HZ 208.0 V @ 60 HZ 230.0 V @ 60 HZ 380.0 V @ 50 HZ 460.0 V @ 60 HZ
Agency Approvals	CE WEEE UKCA CURUSEEV IE3 NEMA PREMIUM
Ambient Temperature	40 °C
Auxillary Box	No Auxillary Box
Auxillary Box Lead Termination	None
Base Indicator	Rigid
Bearing Grease Type	Polyrex EM (-20F +300F)
Blower	None
Current @ Voltage	8.600 A @ 380.0 V 7.400 A @ 460.0 V 17.200 A @ 190.0 V 15.300 A @ 208.0 V

Part detail

Revision	A
Type	AC
Mech. spec.	37H244
Base	
Status	PRD/A
Elec. spec.	37WGS405
Layout	37LYH244
Eff. date	05-13-2024
CD Diagram	CD0005
Poles	06
Leads	9#14
Proprietary	False
Created date	09-14-2023

	14.800 A @ 230.0 V
Design Code	A
Drip Cover	No Drip Cover
Duty Rating	CONT
Efficiency @ 100% Load	89.5 %
Electrically Isolated Bearing	Not Electrically Isolated
Feedback Device	NO FEEDBACK
Front Shaft Indicator	None
Heater Indicator	No Heater
High Voltage Full Load Amps	7.4 a
Insulation Class	F
Inverter Code	Inverter Duty
KVA Code	L
Lifting Lugs	Standard Lifting Lugs
Locked Bearing Indicator	No Locked Bearing
Motor Lead Quantity/Wire Size	9 @ 14 AWG
Motor Lead Termination	Flying Leads
Motor Standards	NEMA
Motor Type	3754M
Mounting Arrangement	F1
Number of Poles	6
Overall Length	20.52 IN
Power Factor	70
Product Family	General Purpose
Pulley End Bearing Type	Ball
Pulley Face Code	Standard
Pulley Shaft Indicator	Standard
Rodent Screen	None
RoHS Status	ROHS COMPLIANT
Service Factor	1.15
Shaft Diameter	1.375 IN
Shaft Ground Indicator	No Shaft Grounding
Shaft Rotation	Reversible
Shaft Slinger Indicator	No Slinger

Speed	1165 rpm
	960 rpm
Speed Code	Single Speed
Starting Method	Direct on line
Thermal Device - Bearing	None
Thermal Device - Winding	None
Vibration Sensor Indicator	No Vibration Sensor
Winding Thermal 1	None
Winding Thermal 2	None

Nameplate

NP4304L									
CAT.NO.	GNEM3708T								
SPEC.	37H244S405G1								
HP	5HP//3.7KW				PH	3			
VOLTS	208-230/460//190/380								
AMPS	15.3-14.8/7.4//17.2/8.6								
R.P.M. (1/MIN)	1165//960				WT.	77KG		KG	
FRAME	215T		HZ	60//50		I.P.	44		
SER.F.	1.15	CODE	L	DES.	A	CLASS	F		
NOM.EFF.	89.5//86.5		% (100%)						
P.F.	70	IC411, 10:1 VT							
RATING	40C AMB-S1 CONT				CC	010A			
DE	6307		ODE	6206					
ENCL	TEFC	SN							
	SFA 17.6-16.6/8.3//19.6/9.8								
	IE3-50HZ 90.7(75%),90.6(50%)								
	IE3-60HZ 91.1(75%),90.0(50%)								

AC Induction Motor Performance Data

Record # 101062

Typical performance - not guaranteed values

Winding: 37WGS405-R007		Type: 3754M	Enclosure: TEFC	
Nameplate Data			460 V, 60 Hz: High Voltage Connection	
Rated Output (HP)	5HP//3.7KW		Full Load Torque	22.5 LB-FT
Volts	208-230/460//190/380		Start Configuration	direct on line
Full Load Amps	15.3-14.8/7.4//17.2/8.6		Breakdown Torque	86.3 LB-FT
R.P.M.	1165//960		Pull-up Torque	46.4 LB-FT
Hz	60//50	Phase 3	Locked-rotor Torque	58.5 LB-FT
NEMA Design Code	A	KVA Code L	Starting Current	57.8 A
Service Factor (S.F.)	1.15		No-load Current	4.01 A
NEMA Nom. Eff.	89.5	Power Factor 70	Line-line Res. @ 25°C	1.4 Ω
Rating - Duty	40C AMB-CONT		Temp. Rise @ Rated Load	55°C
S.F. Amps	17.6-16.6/8.3//19.6/9.8		Temp. Rise @ S.F. Load	66°C
			Locked-rotor Power Factor	21.4
			Rotor inertia	1.34 lb-ft ²

Load Characteristics 460 V, 60 Hz, 5 HP

% of Rated Load	25	50	75	100	125	150	S.F.
Power Factor	31	51	63	70	73	76	72
Efficiency	85.6	90	91.1	90.4	89.8	88.2	90
Speed	1191	1184	1175	1166	1156	1145	1160
Line amperes	4.32	5.12	6.16	7.44	8.88	10.5	8.3

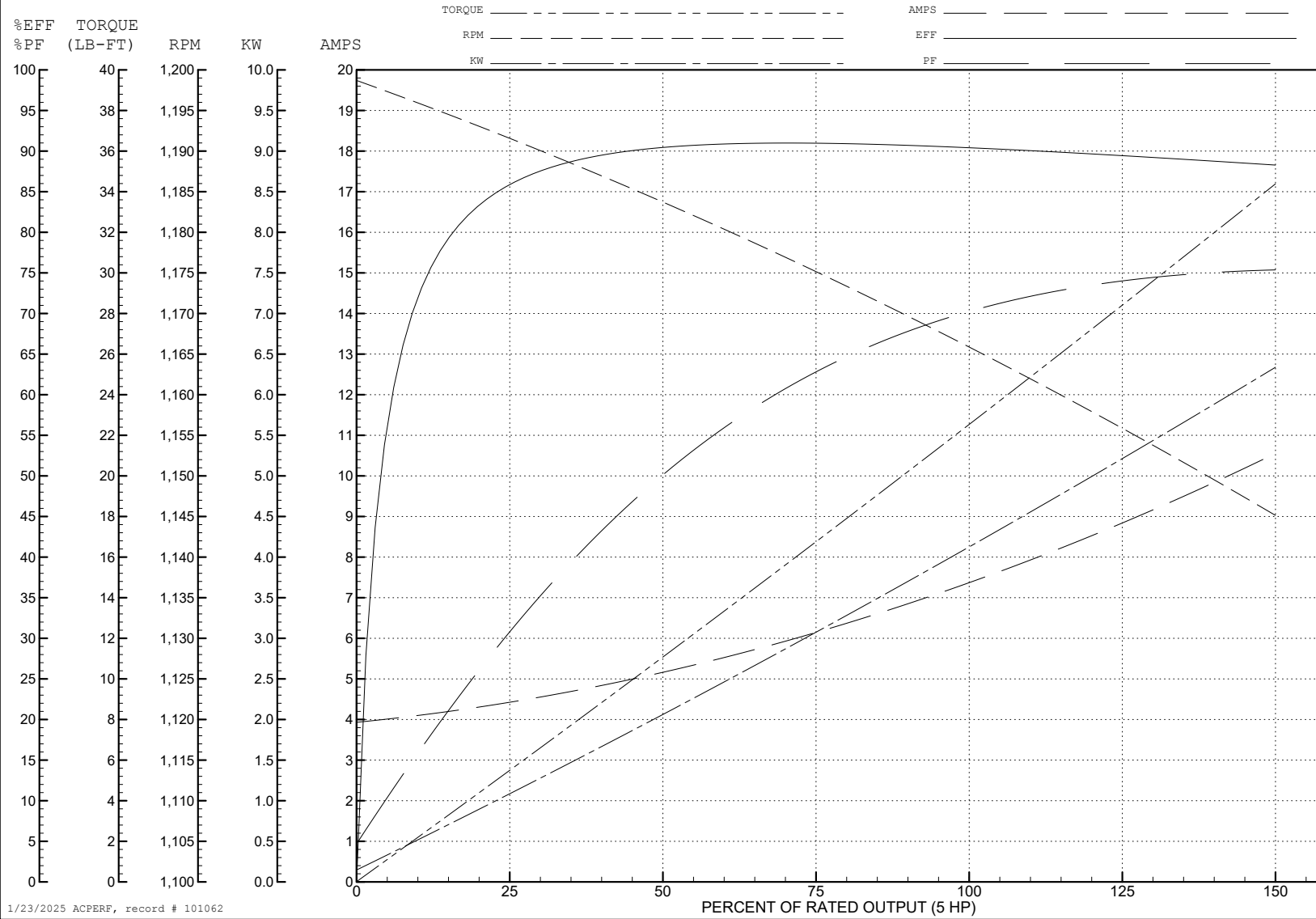
ABB Motors and Mechanical Inc.

WINDING # 37WGS405

Typical performance - not guaranteed values.

5 HP 3 PH 60 HZ 1166 RPM 460 V 3754M

TORQUES (LB-FT): PO=86.3 PU=46.4 LR=58.5 LRA=57.8



1/23/2025 ACPERF, record # 101062

AC Induction Motor Performance Data

Record # 101063

Typical performance - not guaranteed values

Winding: 37WGS405-R007		Type: 3754M		Enclosure: TEFC		
Nameplate Data			380 V, 50 Hz: High Voltage Connection			
Rated Output (HP)	5HP//3.7KW		Full Load Torque	27.32 LB-FT		
Volts	208-230/460//190/380		Start Configuration	direct on line		
Full Load Amps	15.3-14.8/7.4//17.2/8.6		Breakdown Torque	83.4 LB-FT		
R.P.M.	1165//960		Pull-up Torque	51.1 LB-FT		
Hz	60//50	Phase	3	Locked-rotor Torque	64.5 LB-FT	
NEMA Design Code	A		KVA Code	L	Starting Current	56.6 A
Service Factor (S.F.)	1.15		No-load Current	3.94 A		
NEMA Nom. Eff.	89.5	Power Factor	70	Line-line Res. @ 25°C	1.4 Ω	
Rating - Duty	40C AMB-CONT		Temp. Rise @ Rated Load	71°C		
S.F. Amps	17.6-16.6/8.3//19.6/9.8		Temp. Rise @ S.F. Load	90°C		
			Locked-rotor Power Factor	24.7		
			Rotor inertia	1.34 LB-FT ²		

Load Characteristics 380 V, 50 Hz, 5 HP

% of Rated Load	25	50	75	100	125	150	S.F.
Power Factor	37	58	69	74	76	77	72
Efficiency	87.8	90.6	90.7	89.1	87.6	84.7	90
Speed	990	981	971	959	946	930	1160
Line amperes	4.35	5.41	6.84	8.59	10.63	13.08	8.3

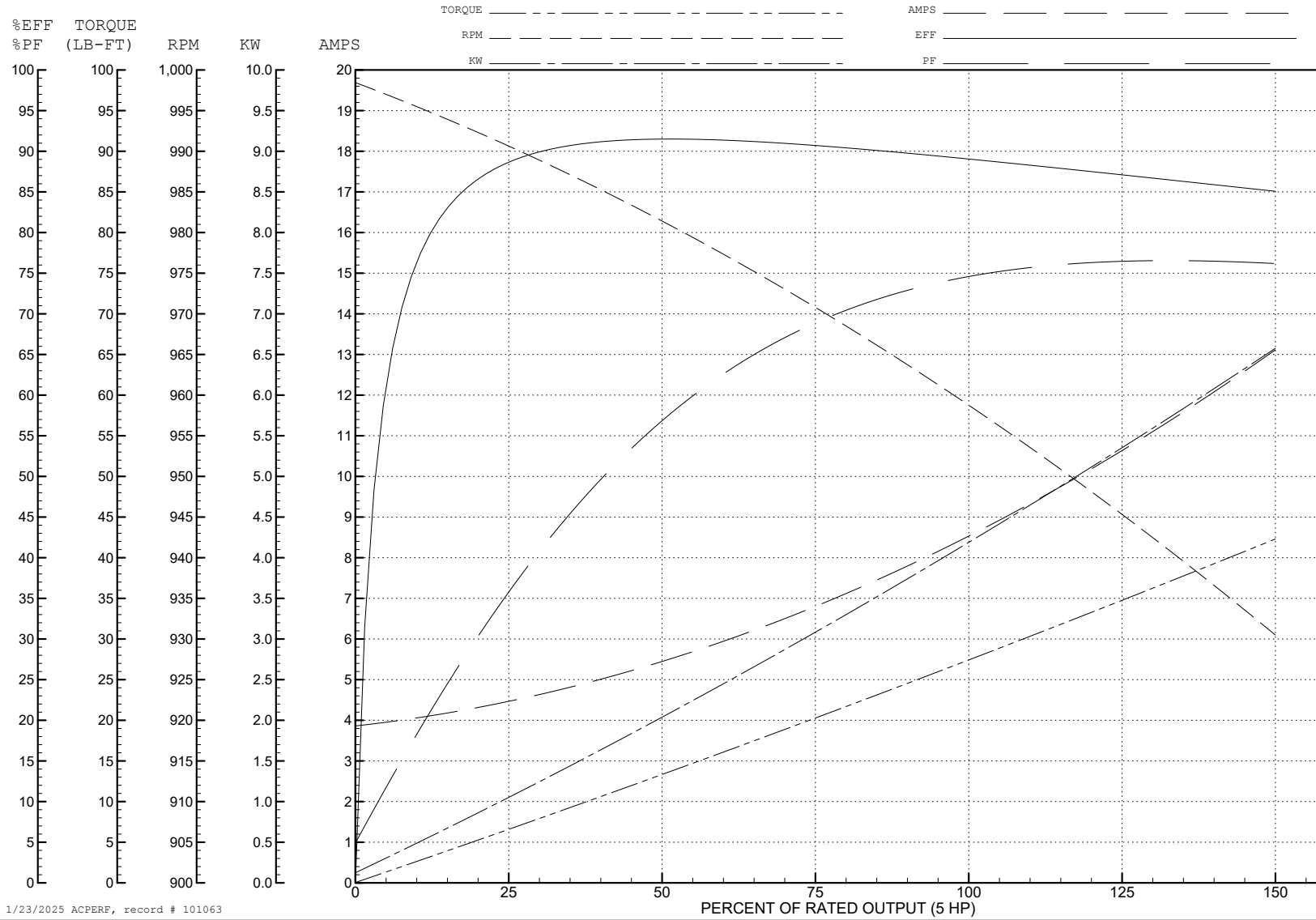
ABB Motors and Mechanical Inc.

WINDING # 37WGS405

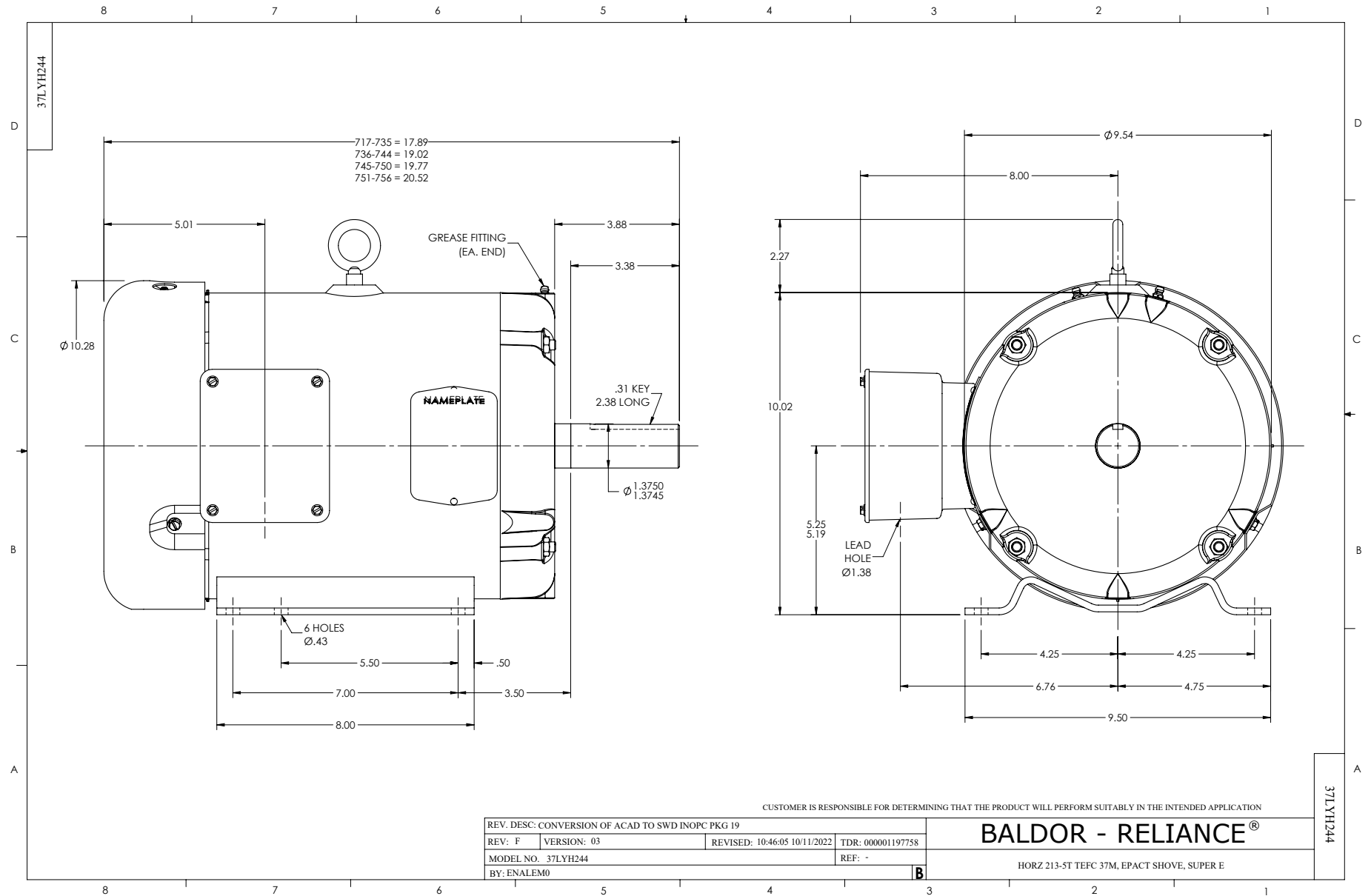
Typical performance - not guaranteed values.

5 HP 3 PH 50 HZ 959 RPM 380 V 3754M

TORQUES (LB-FT): PO=83.4 PU=51.1 LR=64.5 LRA=56.6



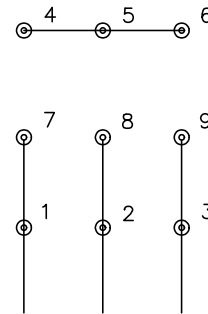
1/23/2025 ACPERF, record # 101063



CD0005

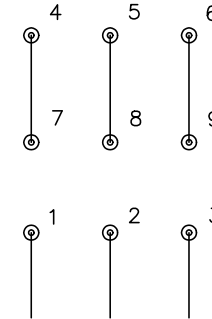


LOW VOLTAGE
(2Y)



LINE

HIGH VOLTAGE
(1Y)



LINE

NOTES:

1. INTERCHANGE ANY TWO LINE LEADS TO REVERSE ROTATION.
2. OPTIONAL THERMOSTATS ARE PROVIDED WHEN SPECIFIED.
3. ACTUAL NUMBER OF INTERNAL PARALLEL CIRCUITS MAY BE A MULTIPLE OF THOSE SHOWN ABOVE.
4. LEAD COLORS ARE OPTIONAL. LEADS MUST ALWAYS BE NUMBERED AS SHOWN.

CD0005

REV. DESC: REVISE TO SHOW OPTIONAL COLORS			
REV. LTR: E	BY: JLP	REVISED: 01/19/99 10:15	TDR: 0171435
S00000		FILE: AAA00005140	MDL: -
		MTL: -	

BALDOR ELECTRIC Co.

3PH, DV, 9 LEADS