

ABB BALDOR RELIANCE III

Customer information packet

GNEM3708T-G

5HP//3.7KW, 1165//960RPM, 3PH, 60//50HZ, 215

Class - None

Division - Not Applicable

Specifications

Enclosure	TEFC
Frame	215T
Frame Material	Steel
Frequency	50.00 Hz 60.00 Hz
Haz Area Class and Group	None
Haz Area Division	Not Applicable
Motor Letter Type	Three Phase
Output @ Frequency	5.000 HP @ 60 HZ 3.700 KW @ 50 HZ
Phase	3
Synchronous Speed @ Frequency	1200 RPM @ 60 HZ
Voltage @ Frequency	190.0 V @ 50 HZ 208.0 V @ 60 HZ 230.0 V @ 60 HZ 380.0 V @ 50 HZ 460.0 V @ 60 HZ
Agency Approvals	CE WEEE UKCA CURUSEEV IE3 NEMA PREMIUM
Ambient Temperature	40 °C
Auxiliary Box	NO AUXILLARY BOX
Auxiliary Box Lead Termination	None
Base Indicator	Rigid
Bearing Grease Type	Polyrex EM (-20F +300F)
Blower	None
Current @ Voltage	8.600 A @ 380.0 V 7.400 A @ 460.0 V 17.200 A @ 190.0 V

Part Detail

Revision	C
Type	AC
Mech. spec.	37J838
Base	
Status	PRD/A
Elec. spec.	37WGS405
Layout	37LYJ838
Eff. date	09-23-2024
CD Diagram	CD0005
Poles	06
Leads	9#14
Proprietary	False
Created date	09-14-2023

15.300 A @ 208.0 V

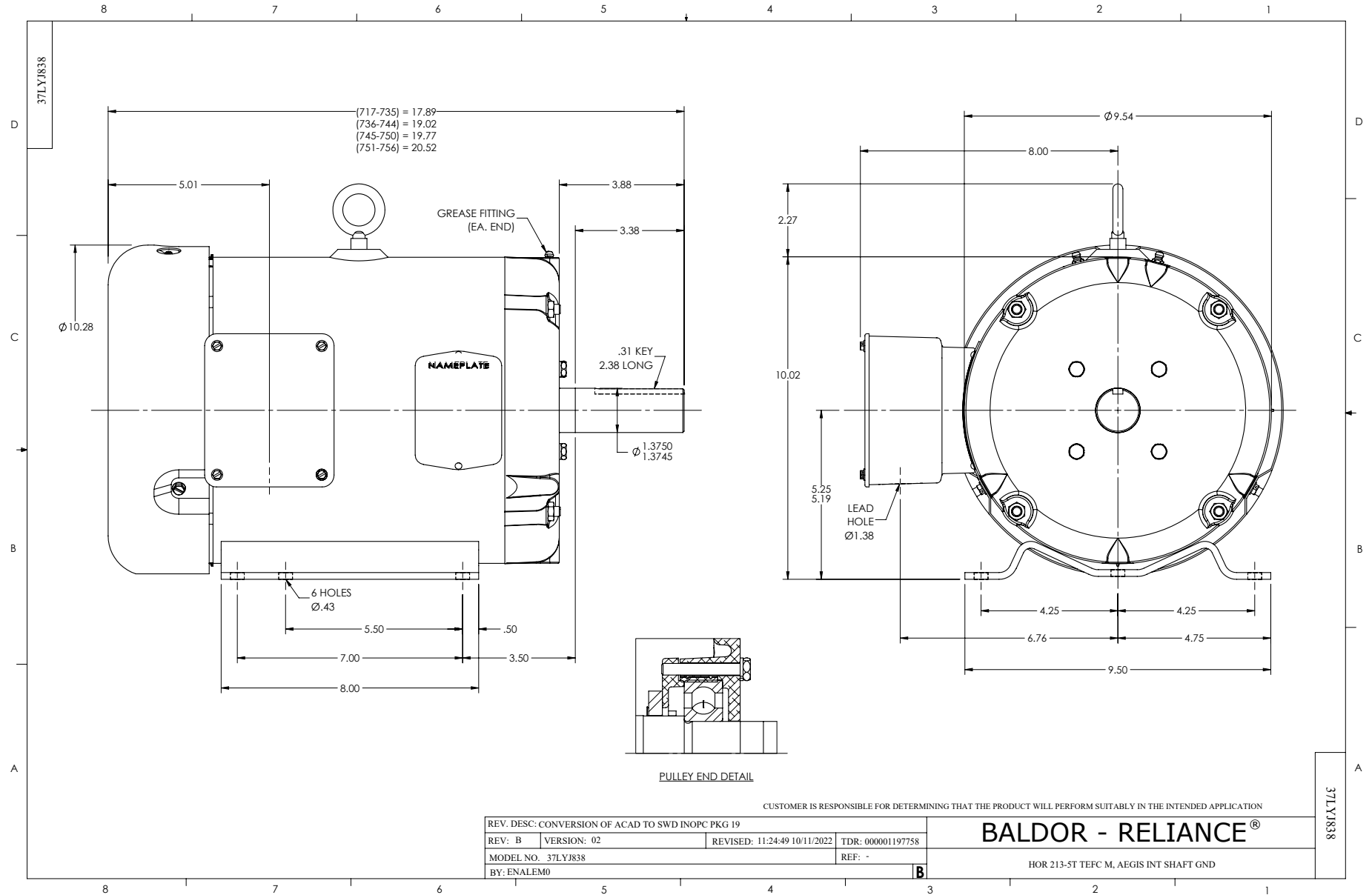
14.800 A @ 230.0 V

Design Code	A
Drip Cover	No Drip Cover
Duty Rating	CONT
Efficiency @ 100% Load	89.5 %
Electrically Isolated Bearing	Not Electrically Isolated
Feedback Device	NO FEEDBACK
Front Shaft Indicator	None
Heater Indicator	No Heater
High Voltage Full Load Amps	7.4 a
Insulation Class	F
Inverter Code	Inverter Duty
KVA Code	L
Lifting Lugs	Standard Lifting Lugs
Locked Bearing Indicator	Locked Bearing
Motor Lead Quantity/Wire Size	9 @ 14 AWG
Motor Lead Termination	Flying Leads
Motor Standards	NEMA
Motor Type	3754M
Mounting Arrangement	F1
Number of Poles	6
Overall Length	20.51 IN
Power Factor	70
Product Family	General Purpose
Pulley End Bearing Type	Ball
Pulley Face Code	Standard
Pulley Shaft Indicator	Standard
Rodent Screen	None
RoHS Status	ROHS COMPLIANT
Service Factor	1.15
Shaft Diameter	1.375 IN
Shaft Ground Indicator	Shaft Grounding
Shaft Rotation	Reversible

Shaft Slinger Indicator	No Slinger
Speed	1165 rpm 960 rpm
Speed Code	Single Speed
Starting Method	Direct on line
Thermal Device - Bearing	None
Thermal Device - Winding	None
Vibration Sensor Indicator	No Vibration Sensor
Winding Thermal 1	None
Winding Thermal 2	None

Nameplate

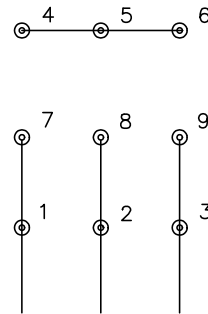
NP4304L									
CAT.NO.	GNEM3708T-G								
SPEC.	37J838S405G1								
HP	5HP//3.7KW				PH	3			
VOLTS	208-230/460//190/380								
AMPS	15.3-14.8/7.4//17.2/8.6								
R.P.M. (1/MIN)	1165//960				WT.	77KG		KG	
FRAME	215T		HZ	60//50		I.P.	44		
SER.F.	1.15	CODE	L	DES.	A	CLASS	H		
NOM.EFF.	89.5//86.5		% (100%)						
P.F.	70	IC411, 10:1 VT							
RATING	40C AMB-S1 CONT				CC	010A			
DE	6307		ODE	6206					
ENCL	TEFC	SN							
	SFA 17.6-16.6/8.3//19.6/9.8								
	IE3-50HZ 90.7(75%),90.6(50%)								
	IE3-60HZ 91.1(75%),90.0(50%)								



CD0005



LOW VOLTAGE
(2Y)



LINE

HIGH VOLTAGE
(1Y)



LINE

NOTES:

1. INTERCHANGE ANY TWO LINE LEADS TO REVERSE ROTATION.
2. OPTIONAL THERMOSTATS ARE PROVIDED WHEN SPECIFIED.
3. ACTUAL NUMBER OF INTERNAL PARALLEL CIRCUITS MAY BE A MULTIPLE OF THOSE SHOWN ABOVE.
4. LEAD COLORS ARE OPTIONAL. LEADS MUST ALWAYS BE NUMBERED AS SHOWN.

CD0005

REV. DESC: REVISE TO SHOW OPTIONAL COLORS			
REV. LTR: E	BY: JLP	REVISED: 01/19/99 10:15	TDR: 0171435
S00000		FILE: AAA00005140	MDL: -
		MTL: -	

BALDOR ELECTRIC Co.

3PH, DV, 9 LEADS