

# ABB BALDOR RELIANCE III

---

## Customer information packet

### GNEM3704T-G

3HP//2.2KW, 1170//960RPM, 3PH, 60//50HZ, 213

Class - None

Division - Not Applicable

**Specifications**

<b>Enclosure</b>	TEFC
<b>Frame</b>	213T
<b>Frame Material</b>	Steel
<b>Frequency</b>	50.00 Hz 60.00 Hz
<b>Haz Area Class and Group</b>	None
<b>Haz Area Division</b>	Not Applicable
<b>Motor Letter Type</b>	Three Phase
<b>Output @ Frequency</b>	3.000 HP @ 60 HZ 2.200 KW @ 50 HZ
<b>Phase</b>	3
<b>Synchronous Speed @ Frequency</b>	1200 RPM @ 60 HZ
<b>Voltage @ Frequency</b>	190.0 V @ 50 HZ 208.0 V @ 60 HZ 230.0 V @ 60 HZ 380.0 V @ 50 HZ 460.0 V @ 60 HZ
<b>Agency Approvals</b>	CE WEEE UKCA CURUSEEV IE3 NEMA PREMIUM
<b>Ambient Temperature</b>	40 °C
<b>Auxiliary Box</b>	NO AUXILLARY BOX
<b>Auxiliary Box Lead Termination</b>	None
<b>Base Indicator</b>	Rigid
<b>Bearing Grease Type</b>	Polyrex EM (-20F +300F)
<b>Blower</b>	None
<b>Current @ Voltage</b>	9.400 A @ 208.0 V 9.000 A @ 230.0 V 5.200 A @ 380.0 V

**Part Detail**

<b>Revision</b>	C
<b>Type</b>	AC
<b>Mech. spec.</b>	37J838
<b>Base</b>	
<b>Status</b>	PRD/A
<b>Elec. spec.</b>	37WGS519
<b>Layout</b>	37LYJ838
<b>Eff. date</b>	09-23-2024
<b>CD Diagram</b>	CD0005
<b>Poles</b>	06
<b>Leads</b>	9#14
<b>Proprietary</b>	False
<b>Created date</b>	09-14-2023

4.500 A @ 460.0 V

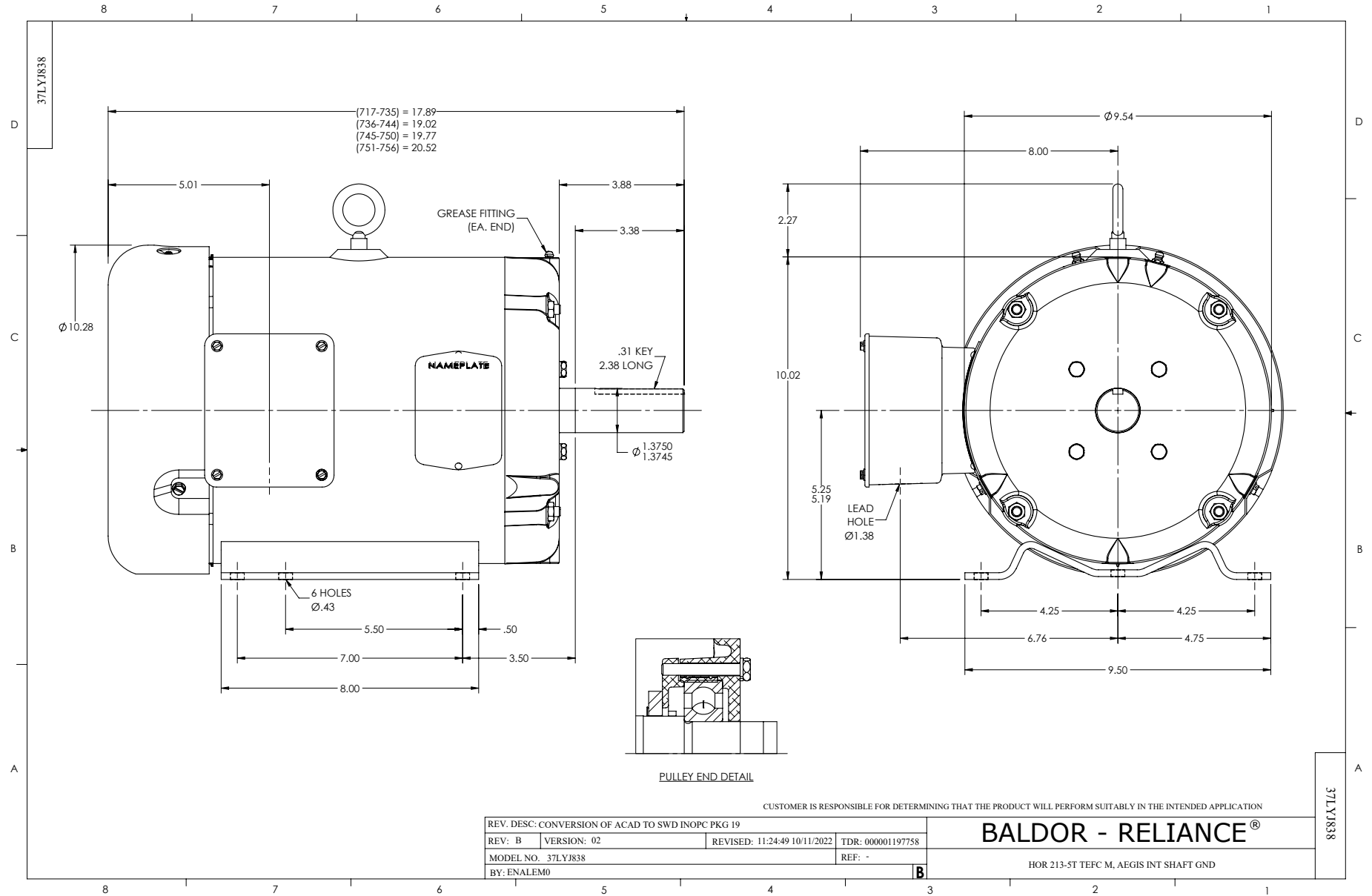
10.400 A @ 190.0 V

<b>Design Code</b>	B
<b>Drip Cover</b>	No Drip Cover
<b>Duty Rating</b>	CONT
<b>Efficiency @ 100% Load</b>	89.5 %
<b>Electrically Isolated Bearing</b>	Not Electrically Isolated
<b>Feedback Device</b>	NO FEEDBACK
<b>Front Shaft Indicator</b>	None
<b>Heater Indicator</b>	No Heater
<b>High Voltage Full Load Amps</b>	4.5 a
<b>Insulation Class</b>	F
<b>Inverter Code</b>	Inverter Duty
<b>KVA Code</b>	L
<b>Lifting Lugs</b>	Standard Lifting Lugs
<b>Locked Bearing Indicator</b>	Locked Bearing
<b>Motor Lead Quantity/Wire Size</b>	9 @ 14 AWG
<b>Motor Lead Termination</b>	Flying Leads
<b>Motor Standards</b>	NEMA
<b>Motor Type</b>	3738M
<b>Mounting Arrangement</b>	F1
<b>Number of Poles</b>	6
<b>Overall Length</b>	19.01 IN
<b>Power Factor</b>	68
<b>Product Family</b>	General Purpose
<b>Pulley End Bearing Type</b>	Ball
<b>Pulley Face Code</b>	Standard
<b>Pulley Shaft Indicator</b>	Standard
<b>Rodent Screen</b>	None
<b>RoHS Status</b>	ROHS COMPLIANT
<b>Service Factor</b>	1.15
<b>Shaft Diameter</b>	1.375 IN
<b>Shaft Ground Indicator</b>	Shaft Grounding
<b>Shaft Rotation</b>	Reversible

<b>Shaft Slinger Indicator</b>	No Slinger
<b>Speed</b>	1170 rpm 960 rpm
<b>Speed Code</b>	Single Speed
<b>Starting Method</b>	Direct on line
<b>Thermal Device - Bearing</b>	None
<b>Thermal Device - Winding</b>	None
<b>Vibration Sensor Indicator</b>	No Vibration Sensor
<b>Winding Thermal 1</b>	None
<b>Winding Thermal 2</b>	None

**Nameplate**

<b>NP4304L</b>										
<b>CAT.NO.</b>	GNEM3704T-G									
<b>SPEC.</b>	37J838S519G2									
<b>HP</b>	3HP//2.2KW				<b>PH</b>	3				
<b>VOLTS</b>	208-230/460//190/380									
<b>AMPS</b>	9.4-9/4.5//10.4/5.2									
<b>R.P.M. (1/MIN)</b>	1170//960				<b>WT.</b>	61KG	<b>KG</b>			
<b>FRAME</b>	213T	<b>HZ</b>	60//50		<b>I.P.</b>	44				
<b>SER.F.</b>	1.15	<b>CODE</b>	L	<b>DES.</b>	B	<b>CLASS</b>	H			
<b>NOM.EFF.</b>	89.5//84.4		<b>% (100%)</b>							
<b>P.F.</b>	68	IC411, 10:1 VT								
<b>RATING</b>	40C AMB-S1 CONT			<b>CC</b>	010A					
<b>DE</b>	6307	<b>ODE</b>	6206							
<b>ENCL</b>	TEFC	<b>SN</b>								
	SFA 10.8-10.2/5.1//12/6									
	IE3-50HZ 89.2(75%),88.4(50%)									
	IE3-60HZ 89.4(75%),87.7(50%)									



CD0005

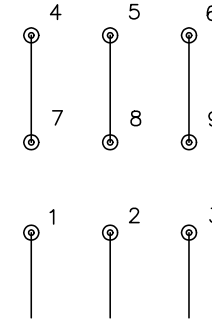


LOW VOLTAGE  
(2Y)



LINE

HIGH VOLTAGE  
(1Y)



LINE

**NOTES:**

1. INTERCHANGE ANY TWO LINE LEADS TO REVERSE ROTATION.
2. OPTIONAL THERMOSTATS ARE PROVIDED WHEN SPECIFIED.
3. ACTUAL NUMBER OF INTERNAL PARALLEL CIRCUITS MAY BE A MULTIPLE OF THOSE SHOWN ABOVE.
4. LEAD COLORS ARE OPTIONAL. LEADS MUST ALWAYS BE NUMBERED AS SHOWN.

CD0005

REV. DESC: REVISE TO SHOW OPTIONAL COLORS

REV. LTR: E | BY: JLP | REVISED: 01/19/99 10:15 | TDR: 0171435

500000

FILE: AAA00005140

MDL: -

MTL: -

**BALDOR ELECTRIC Co.**

3PH, DV, 9 LEADS