

ABB BALDOR RELIANCE III

Customer information packet GNEM3665T

42M 4P TEFC HOR 184T SUPER E, IE3

Class - None

Division - Not Applicable

Specifications

Enclosure	TEFC
Frame	184T
Frame Material	Iron
Frequency	50.00 Hz 60.00 Hz
Haz Area Class and Group	None
Haz Area Division	Not Applicable
Motor Letter Type	Three Phase
Output @ Frequency	5.000 HP @ 60 HZ 5.000 HP @ 50 HZ
Phase	3
Synchronous Speed @ Frequency	1800 RPM @ 60 HZ
Voltage @ Frequency	190.0 V @ 50 HZ 460.0 V @ 60 HZ 208.0 V @ 60 HZ 230.0 V @ 60 HZ 380.0 V @ 50 HZ
Agency Approvals	WEEE CE UKCA NEMA PREMIUM IE3 CURUSEEV
Ambient Temperature	40 °C
Auxiliary Box	NO AUXILLARY BOX
Auxiliary Box Lead Termination	None
Base Indicator	Rigid
Bearing Grease Type	Polyrex EM (-20F +300F)
Blower	None
Current @ Voltage	7.600 A @ 380.0 V 6.500 A @ 460.0 V 15.200 A @ 190.0 V

Part Detail

Revision	K
Type	AC
Mech. spec.	06C101
Base	
Status	PRD/A
Elec. spec.	06WGW567
Layout	06LYC101
Eff. date	08-05-2024
CD Diagram	CD0005
Poles	04
Leads	9#16
Proprietary	False
Created date	12-14-2018

13.600 A @ 208.0 V

13.000 A @ 230.0 V

Design Code	A
Drip Cover	No Drip Cover
Duty Rating	CONT
Efficiency @ 100% Load	90.2 %
Electrically Isolated Bearing	Not Electrically Isolated
Feedback Device	NO FEEDBACK
Front Shaft Indicator	None
Heater Indicator	No Heater
High Voltage Full Load Amps	6.5 a
Insulation Class	F
Inverter Code	Inverter Ready
IP Rating	NONE
KVA Code	K
Lifting Lugs	Standard Lifting Lugs
Locked Bearing Indicator	No Locked Bearing
Motor Lead Quantity/Wire Size	9 @ 16 AWG
Motor Lead Termination	Flying Leads
Motor Standards	NEMA
Motor Type	0642M
Mounting Arrangement	F1
Number of Poles	4
Overall Length	15.24 IN
Power Factor	80
Product Family	General Purpose
Pulley End Bearing Type	Ball
Pulley Face Code	Standard
Pulley Shaft Indicator	Standard
Rodent Screen	None
RoHS Status	ROHS COMPLIANT
Service Factor	1.15
Shaft Diameter	1.125 IN
Shaft Ground Indicator	No Shaft Grounding

Shaft Rotation	Reversible
Shaft Slinger Indicator	No Slinger
Speed	1450 rpm 1750 rpm
Speed Code	Single Speed
Starting Method	Direct on line
Thermal Device - Bearing	None
Thermal Device - Winding	None
Vibration Sensor Indicator	No Vibration Sensor
Winding Thermal 1	None
Winding Thermal 2	None

Nameplate

NP4304L

CAT.NO.	GNEM3665T					
SPEC.	06C101W567G1					
HP	5/3.7KW	PH	3			
VOLTS	208-230/460//190/380					
AMPS	13.6-13/6.5//15.2/7.6					
R.P.M. (1/MIN)	1750//1450	WT.	52KG	KG		
FRAME	184T	HZ	60//50	I.P.	44	
SER.F.	1.15	CODE	K	DES.	A	CLASS F
NOM.EFF.	90.2//88.6	% (100%)				
P.F.	80	IC411, 10:1 VT				
RATING	40C AMB-S1 CONT	CC	010A			
DE	6206	ODE	6205			
ENCL	TEFC	SN				
	IE3-50HZ 90.0 (75%),89.2 (50%)					
	IE3-60HZ 90.9 (75%),90.6 (50%)					

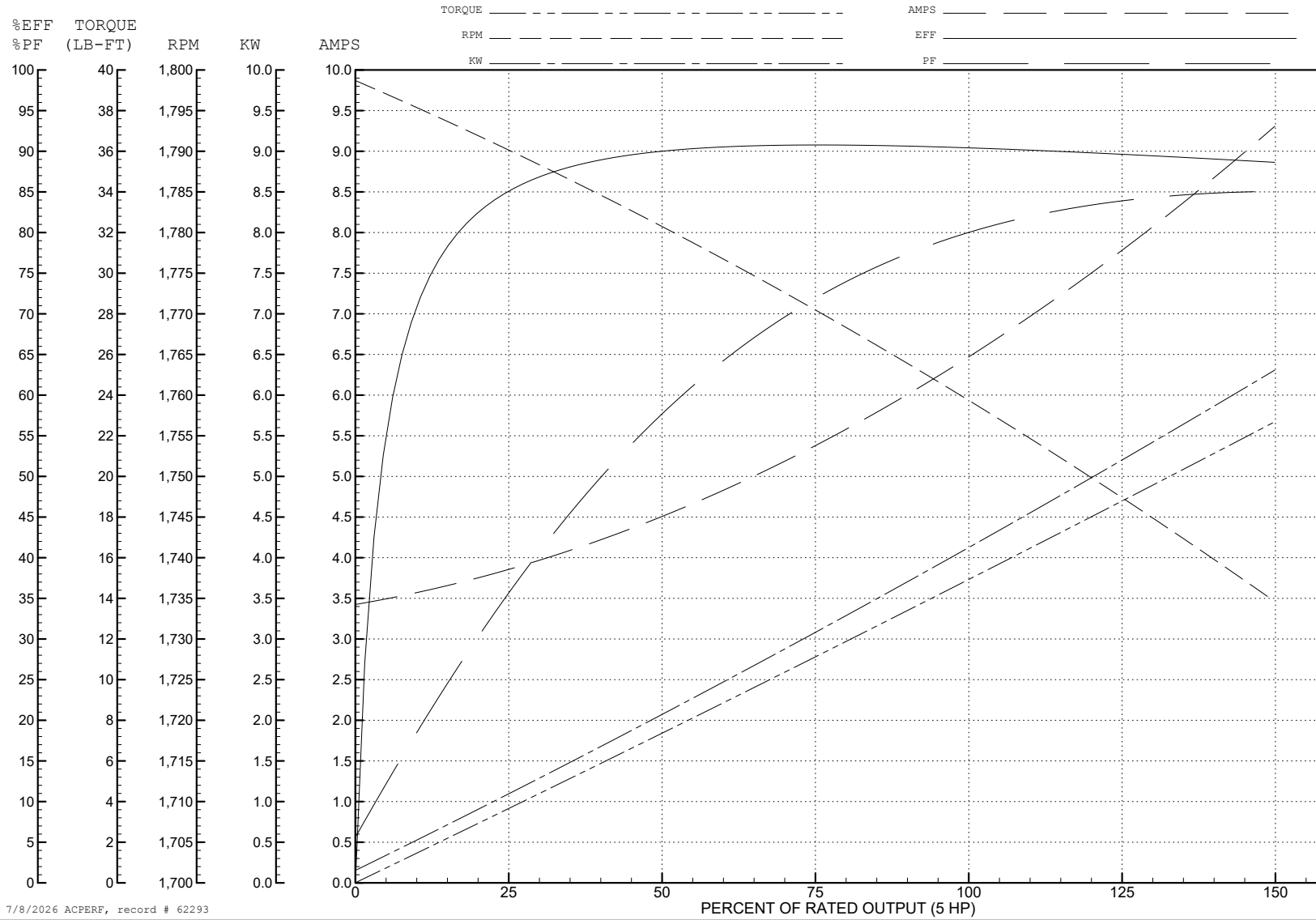
ABB Motors and Mechanical Inc.

WINDING # 06WGW567

5 HP 3 PH 60 HZ 1760 RPM 460 V 0642M

Typical performance - not guaranteed values.

TORQUES (LB-FT): PO=58.3 PU=25.18 LR=41.3 LRA=54.8



7/8/2026 ACPERF, record # 62293

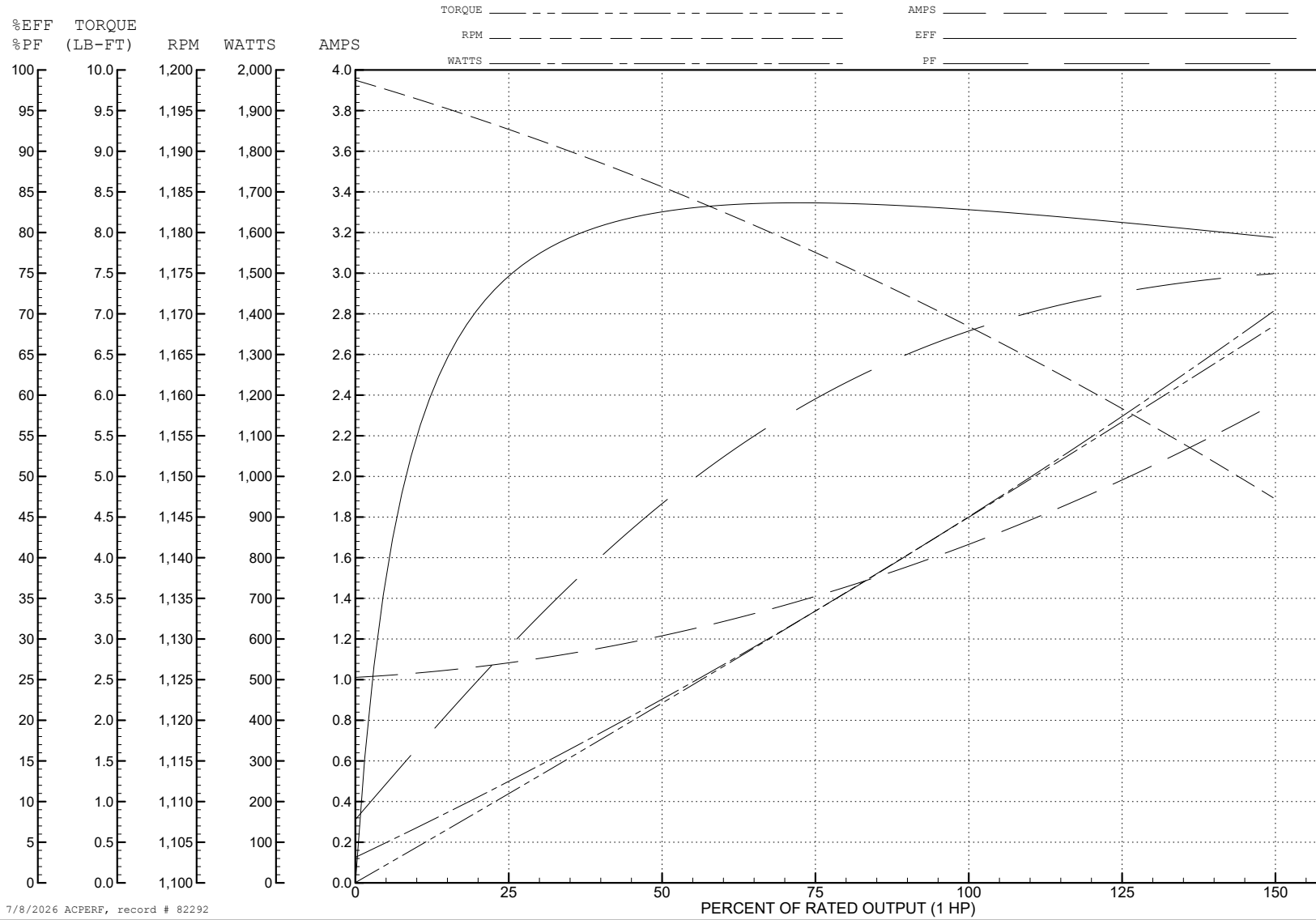
ABB Motors and Mechanical Inc.

WINDING # 05WGX571

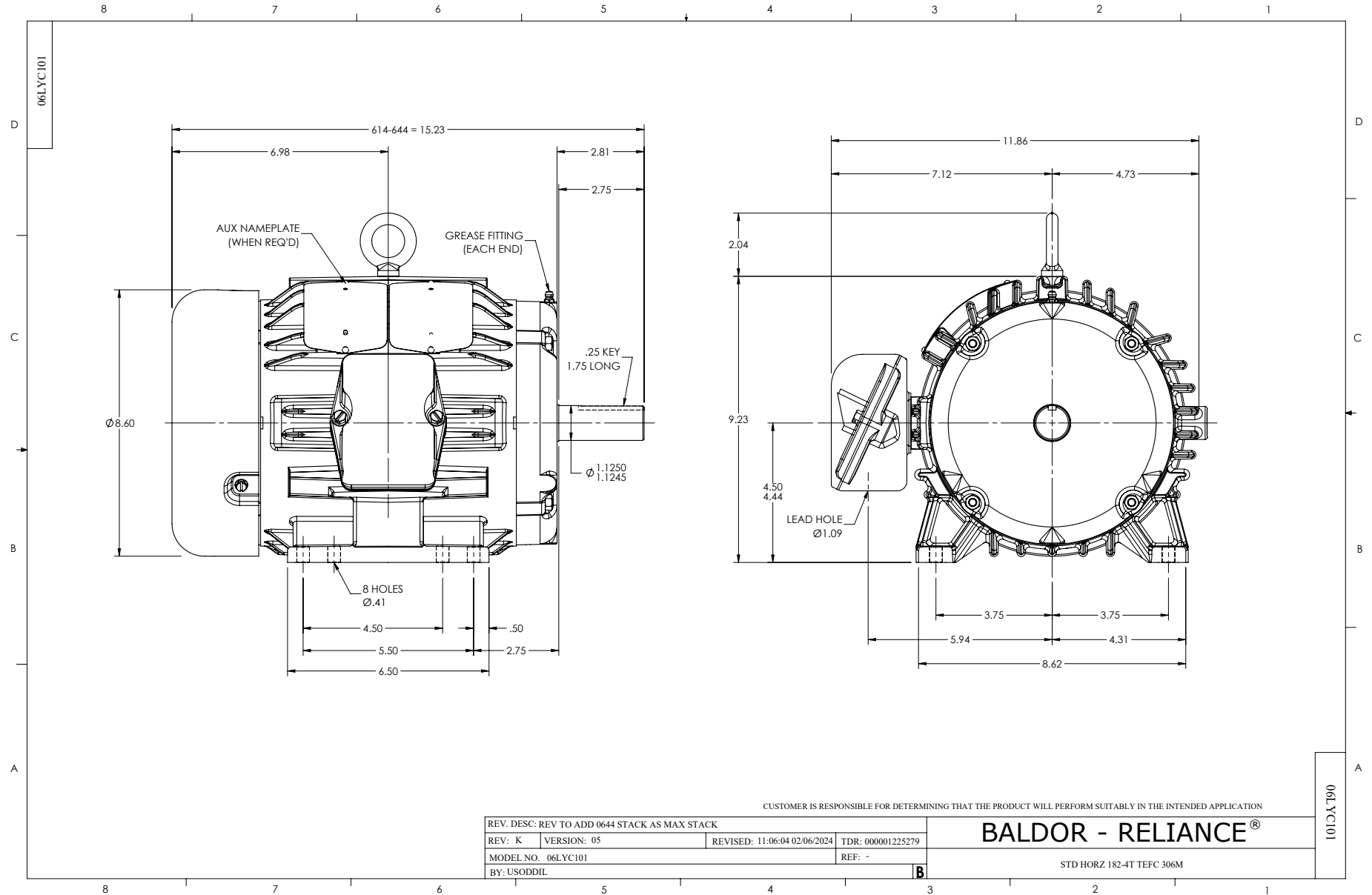
Typical performance - not guaranteed values.

1 HP 3 PH 60 HZ 1155 RPM 460 V 0526M

TORQUES (LB-FT): PO=11.9 PU=7.06 LR=8.62 LRA=9.06



7/8/2026 ACPERF, record # 82292



CD0005



LOW VOLTAGE
(2Y)



LINE

HIGH VOLTAGE
(1Y)



LINE

NOTES:

1. INTERCHANGE ANY TWO LINE LEADS TO REVERSE ROTATION.
2. OPTIONAL THERMOSTATS ARE PROVIDED WHEN SPECIFIED.
3. ACTUAL NUMBER OF INTERNAL PARALLEL CIRCUITS MAY BE A MULTIPLE OF THOSE SHOWN ABOVE.
4. LEAD COLORS ARE OPTIONAL. LEADS MUST ALWAYS BE NUMBERED AS SHOWN.

CD0005

REV. DESC: REVISE TO SHOW OPTIONAL COLORS

REV. LTR: E BY: JLP REVISED: 01/19/99 10:15 TDR: 0171435

900000

FILE: AAA00005140

MDL: -

MTL: -

BALDOR ELECTRIC Co.

3PH, DV, 9 LEADS