

ABB BALDOR RELIANCE III

Customer information packet

GNEM3615T-G

5HP, 1750//1440RPM, 3PH, 60//50HZ, 184T, 3646

Class - None

Division - Not Applicable

Specifications

Enclosure	TEFC
Frame	184T
Frame Material	Steel
Frequency	50.00 Hz 60.00 Hz
Haz Area Class and Group	None
Haz Area Division	Not Applicable
Motor Letter Type	Three Phase
Output @ Frequency	5.000 HP @ 50 HZ 5.000 HP @ 60 HZ
Phase	3
Synchronous Speed @ Frequency	1800 RPM @ 60 HZ
Voltage @ Frequency	460.0 V @ 60 HZ 380.0 V @ 50 HZ 230.0 V @ 60 HZ 208.0 V @ 60 HZ 190.0 V @ 50 HZ
Agency Approvals	CE CSA UR
Ambient Temperature	40 °C
Auxiliary Box	NO AUXILLARY BOX
Auxiliary Box Lead Termination	None
Base Indicator	Rigid
Bearing Grease Type	Polyrex EM (-20F +300F)
Blower	None
Current @ Voltage	7.700 A @ 380.0 V 6.600 A @ 460.0 V 15.400 A @ 190.0 V 14.000 A @ 208.0 V 13.000 A @ 230.0 V
Design Code	A

Part Detail

Revision	K
Type	AC
Mech. spec.	36M524
Base	
Status	PRD/A
Elec. spec.	36WGR014
Layout	36LYM524
Eff. date	04-25-2025
CD Diagram	CD0005
Poles	04
Leads	9#16
Proprietary	False
Created date	02-26-2017

Drip Cover	No Drip Cover
Duty Rating	CONT
Efficiency @ 100% Load	90.2 %
Electrically Isolated Bearing	Not Electrically Isolated
Feedback Device	NO FEEDBACK
Front Face Code	Standard
Front Shaft Indicator	None
Heater Indicator	No Heater
High Voltage Full Load Amps	6.6 a
Insulation Class	H
Inverter Code	Inverter Ready
KVA Code	L
Lifting Lugs	No Lifting Lugs
Locked Bearing Indicator	Locked Bearing
Motor Lead Exit	Ko Box
Motor Lead Quantity/Wire Size	9 @ 16 AWG
Motor Lead Termination	Flying Leads
Motor Standards	NEMA
Motor Type	3646M
Mounting Arrangement	F1
Number of Poles	4
Overall Length	18.04 IN
Power Factor	78
Product Family	General Purpose
Pulley End Bearing Type	Ball
Pulley Face Code	Standard
Pulley Shaft Indicator	Standard
Rodent Screen	None
RoHS Status	ROHS COMPLIANT
Service Factor	1.15
Shaft Diameter	1.125 IN
Shaft Extension Location	Pulley End
Shaft Ground Indicator	Shaft Grounding
Shaft Rotation	Reversible

Shaft Slinger Indicator	No Slinger
Speed	1440 rpm 1750 rpm
Speed Code	Single Speed
Starting Method	Direct on line
Thermal Device - Bearing	None
Thermal Device - Winding	None
Vibration Sensor Indicator	No Vibration Sensor
Winding Thermal 1	None
Winding Thermal 2	None

Nameplate

NP2716L									
CAT NO	GNEM3615T-G								
SPEC.	36M524R014G1								
HP	5/3.7KW				PH	3			
VOLTS	208-230/460//190/380								
AMP	14-13/6.6//15.4/7.7								
R.P.M. (1/MIN)	1750//1440								
FRAME	184T	HZ	60//50		I.P.	44			
SER.F.	1.15	CODE	L	DES	A	CL	H		
NOM.EFF.	90.2//88.6		% (100%)						
PF	78	IC411 46KG							
RATING	40C AMB-S1 CONT				CC	010A			
DE BRG	6206	ODE	6205						
ENCL	TEFC	SN							
BLANK	IE3-60HZ-90.4(75%)89.3(50%)								
BLANK	IE3-50HZ-89.8(75%)89.7(50%)								

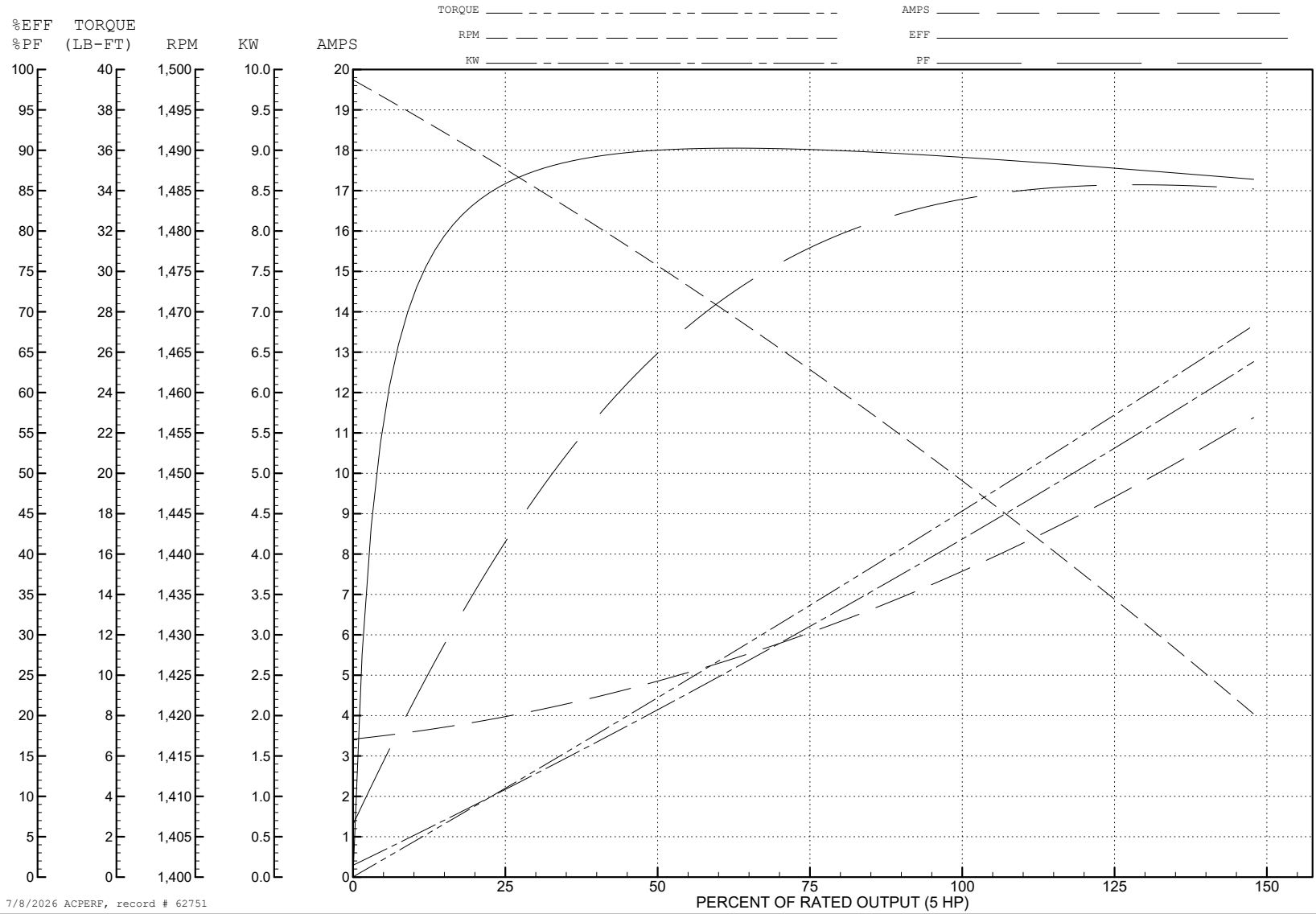
ABB Motors and Mechanical Inc.

WINDING # 36WGR014

5 HP 3 PH 50 HZ 1449 RPM 380 V 3646M

Typical performance - not guaranteed values.

TORQUES (LB-FT): PO=63.26 PU=33.01 LR=42.9 LRA=55.17



7/8/2026 ACPERF, record # 62751

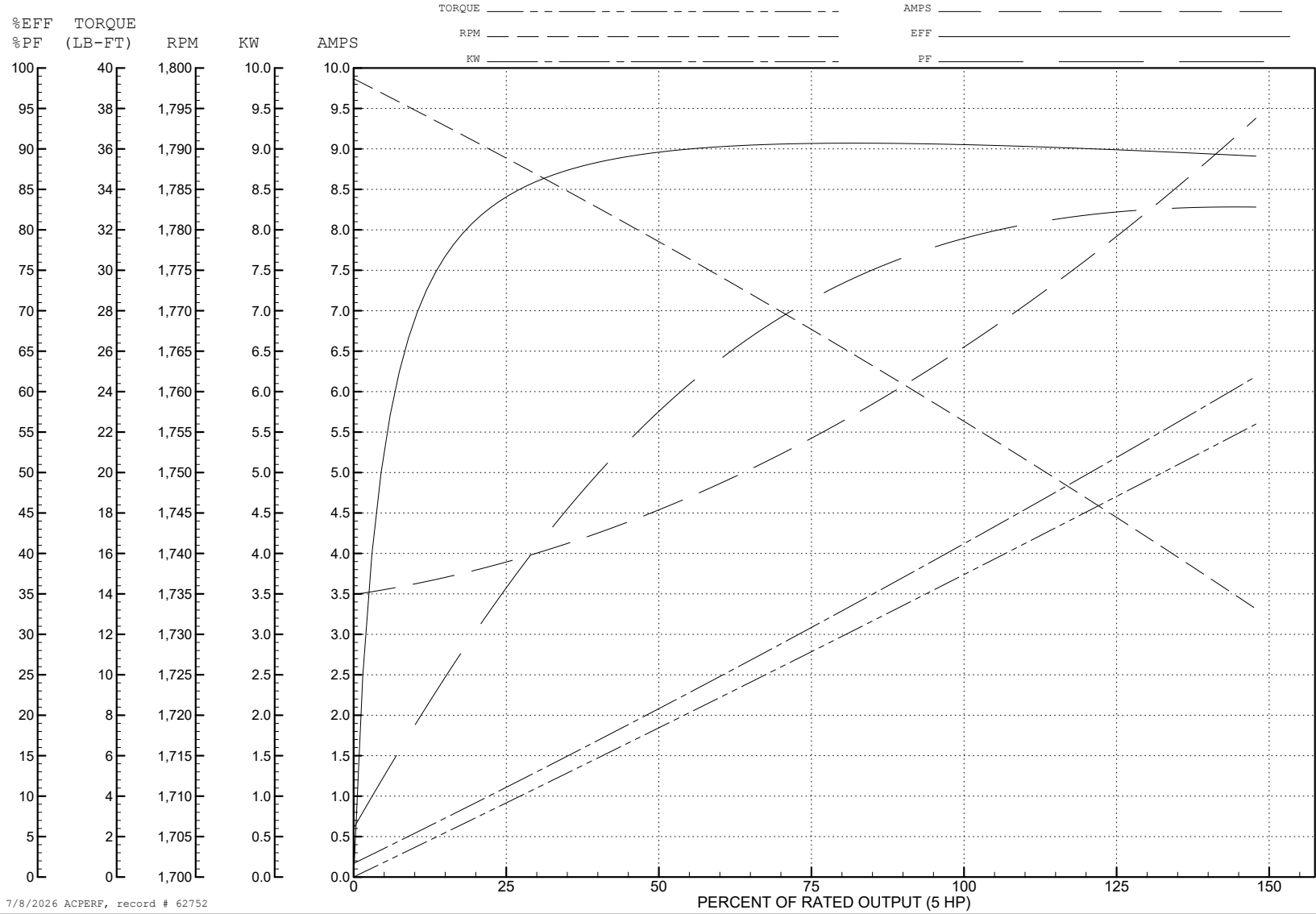
ABB Motors and Mechanical Inc.

WINDING # 36WGR014

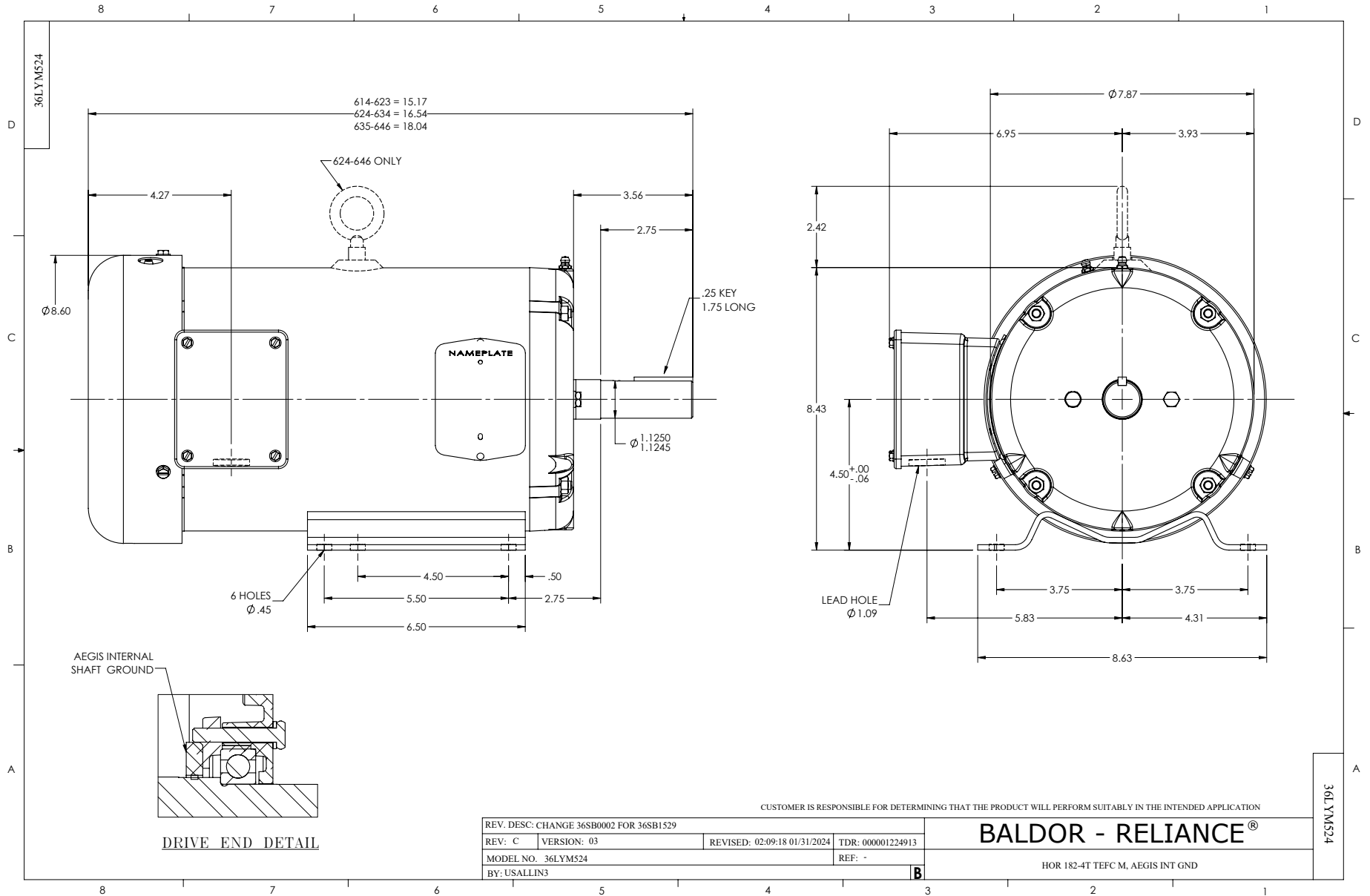
Typical performance - not guaranteed values.

5 HP 3 PH 60 HZ 1756 RPM 460 V 3646M

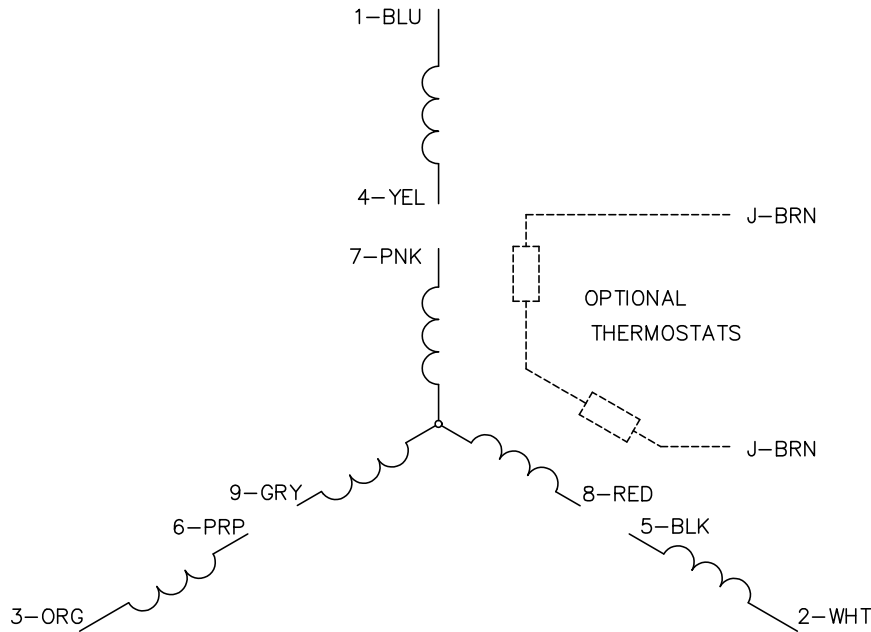
TORQUES (LB-FT): PO=67.5 PU=32.7 LR=42.5 LRA=58.2



7/8/2026 ACPERF, record # 62752



CD0005



LOW VOLTAGE
(2Y)



LINE

HIGH VOLTAGE
(1Y)



LINE

NOTES:

1. INTERCHANGE ANY TWO LINE LEADS TO REVERSE ROTATION.
2. OPTIONAL THERMOSTATS ARE PROVIDED WHEN SPECIFIED.
3. ACTUAL NUMBER OF INTERNAL PARALLEL CIRCUITS MAY BE A MULTIPLE OF THOSE SHOWN ABOVE.
4. LEAD COLORS ARE OPTIONAL. LEADS MUST ALWAYS BE NUMBERED AS SHOWN.

CD0005

REV. DESC: REVISE TO SHOW OPTIONAL COLORS			
REV. LTR: E	BY: JLP	REVISED: 01/19/99 10:15	TDR: 0171435
S00000		FILE: AAA00005140	MDL: -
		MTL: -	

BALDOR ELECTRIC Co.

3PH, DV, 9 LEADS