

ABB BALDOR RELIANCE III

Customer information packet GNEM3611T

3HP, 1760//1460RPM, 3PH, 60//50HZ, 182T, 3636

Class - None

Division - Not Applicable

Specifications

Enclosure	TEFC
Frame	182T
Frame Material	Steel
Frequency	50.00 Hz 60.00 Hz
Haz Area Class and Group	None
Haz Area Division	Not Applicable
Motor Letter Type	Three Phase
Output @ Frequency	3.000 HP @ 60 HZ 3.000 HP @ 50 HZ
Phase	3
Synchronous Speed @ Frequency	1800 RPM @ 60 HZ
Voltage @ Frequency	190.0 V @ 50 HZ 208.0 V @ 60 HZ 230.0 V @ 60 HZ 380.0 V @ 50 HZ 460.0 V @ 60 HZ
Agency Approvals	CE UKCA WEEE CURUS IE3 NEMA PREMIUM NEMA PREMIUM (OLD LOGO)
Ambient Temperature	40 °C
Auxiliary Box	NO AUXILLARY BOX
Auxiliary Box Lead Termination	None
Base Indicator	Rigid
Bearing Grease Type	Polyrex EM (-20F +300F)
Blower	None
Current @ Voltage	8.800 A @ 230.0 V 9.000 A @ 208.0 V

Part Detail

Revision	J
Type	AC
Mech. spec.	36Q570
Base	
Status	PRD/A
Elec. spec.	36WGN115
Layout	36LYQ570
Eff. date	04-02-2026
CD Diagram	CD0005
Poles	04
Leads	9#16
Proprietary	False
Created date	02-16-2017

5.100 A @ 380.0 V
 4.400 A @ 460.0 V
 10.200 A @ 190.0 V

Design Code	A
Drip Cover	No Drip Cover
Duty Rating	CONT
Efficiency @ 100% Load	90.2 %
Electrically Isolated Bearing	Not Electrically Isolated
Feedback Device	NO FEEDBACK
Front Face Code	Standard
Front Shaft Indicator	None
Heater Indicator	No Heater
High Voltage Full Load Amps	4.4 a
Insulation Class	F
Inverter Code	Inverter Ready
KVA Code	K
Lifting Lugs	No Lifting Lugs
Locked Bearing Indicator	No Locked Bearing
Motor Lead Exit	Ko Box
Motor Lead Quantity/Wire Size	9 @ 16 AWG
Motor Lead Termination	Flying Leads
Motor Standards	NEMA
Motor Type	3636M
Mounting Arrangement	F1
Number of Poles	4
Overall Length	18.04 IN
Power Factor	74
Product Family	General Purpose
Pulley End Bearing Type	Ball
Pulley Face Code	Standard
Pulley Shaft Indicator	Standard
Rodent Screen	None
RoHS Status	ROHS COMPLIANT
Service Factor	1.15

Shaft Diameter	1.125 IN
Shaft Extension Location	Pulley End
Shaft Ground Indicator	No Shaft Grounding
Shaft Rotation	Reversible
Shaft Slinger Indicator	No Slinger
Speed	1460 rpm 1760 rpm
Speed Code	Single Speed
Starting Method	Direct on line
Thermal Device - Bearing	None
Thermal Device - Winding	None
Vibration Sensor Indicator	No Vibration Sensor
Winding Thermal 1	None
Winding Thermal 2	None

Nameplate

NP4304L

CAT.NO.	GNEM3611T					
SPEC.	36Q570N115G1					
HP	3/2.2KW	PH	3			
VOLTS	208-230/460//190/380					
AMPS	9-8.8/4.4//10.2/5.1					
R.P.M. (1/MIN)	1760//1460	WT.	38KG	KG		
FRAME	182T	HZ	60//50	I.P.	44	
SER.F.	1.15	CODE	K	DES.	A	CLASS F
NOM.EFF.	90.2//87.6	% (100%)				
P.F.	74	IC411, 10:1 VT				
RATING	40C AMB-S1 CONT	CC	010A			
DE	6206	ODE	6205			
ENCL	TEFC	SN				
	IE3-50HZ-89.5(75%),88.5(50%)					
	IE3-60HZ-89.8(75%),88.0(50%)					

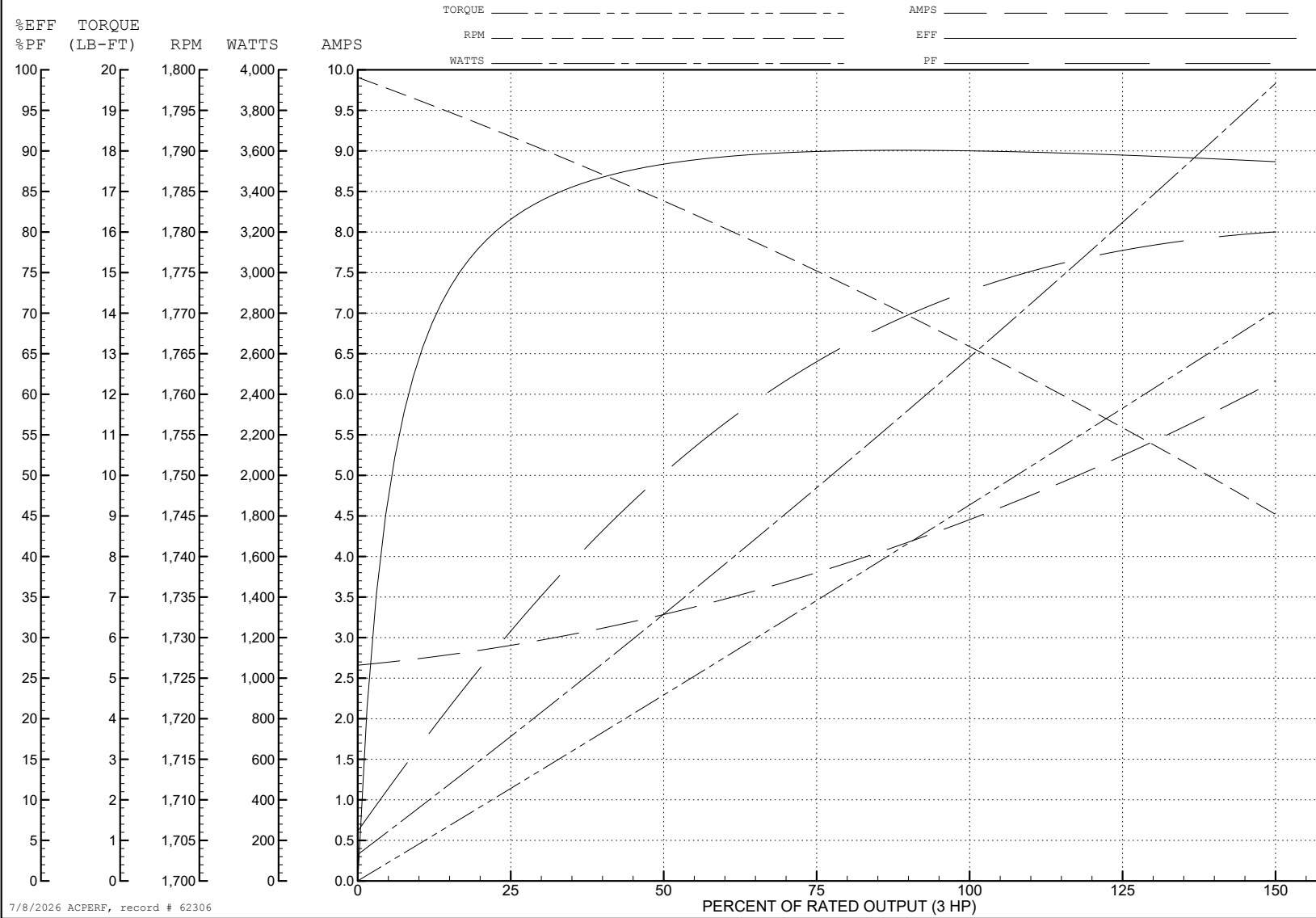
ABB Motors and Mechanical Inc.

WINDING # 36WGN115

3 HP 3 PH 60 HZ 1767 RPM 460 V 3636M

Typical performance - not guaranteed values.

TORQUES (LB-FT): PO=41.11 PU=20.45 LR=24.25 LRA=36.84



7/8/2026 ACPERF, record # 62306

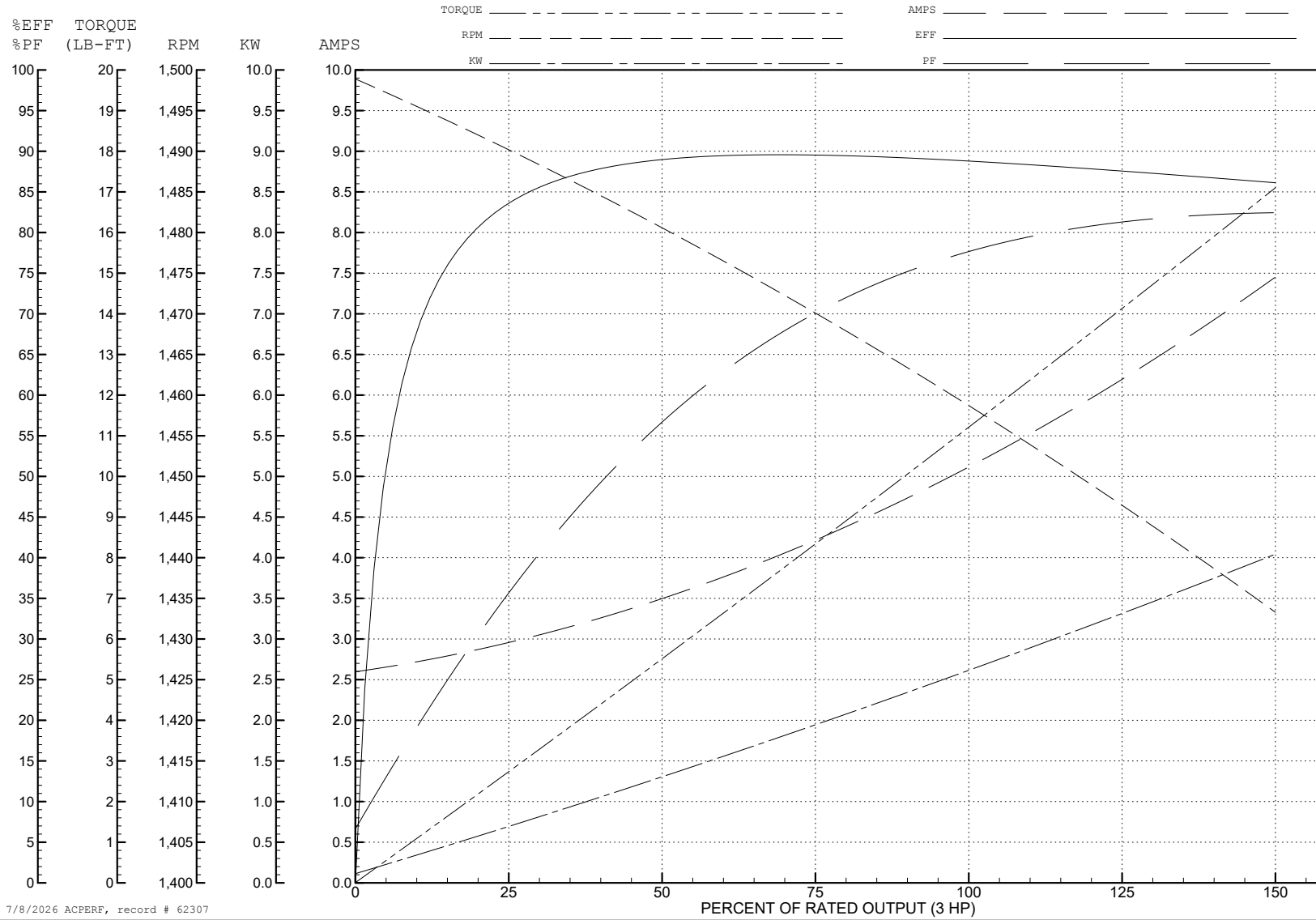
ABB Motors and Mechanical Inc.

WINDING # 36WGN115

Typical performance - not guaranteed values.

3 HP 3 PH 50 HZ 1460 RPM 380 V 3636M

TORQUES (LB-FT): PO=38.77 PU=20.79 LR=24.65 LRA=35.48



7/8/2026 ACPERF, record # 62307

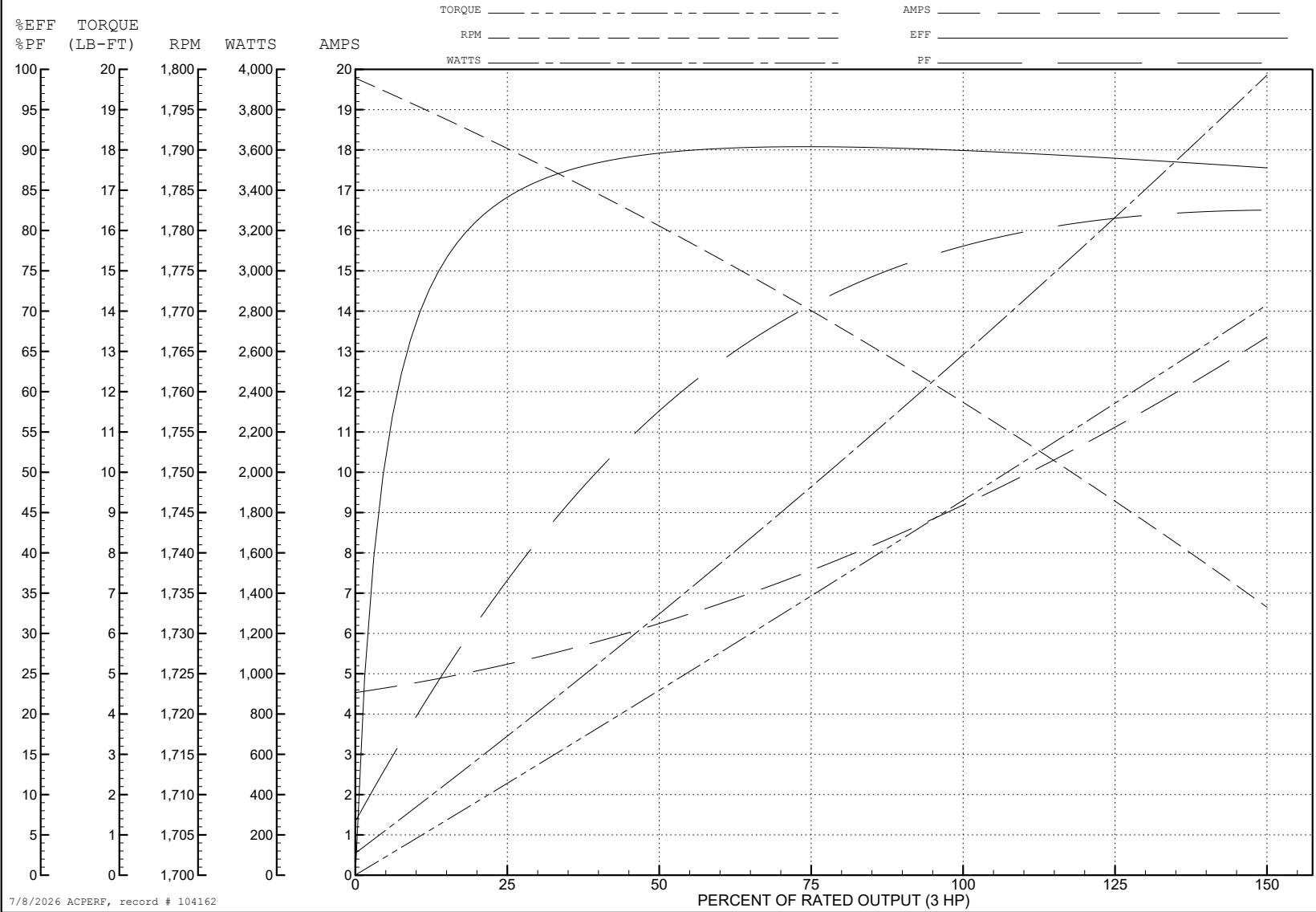
ABB Motors and Mechanical Inc.

WINDING # 36WGN115

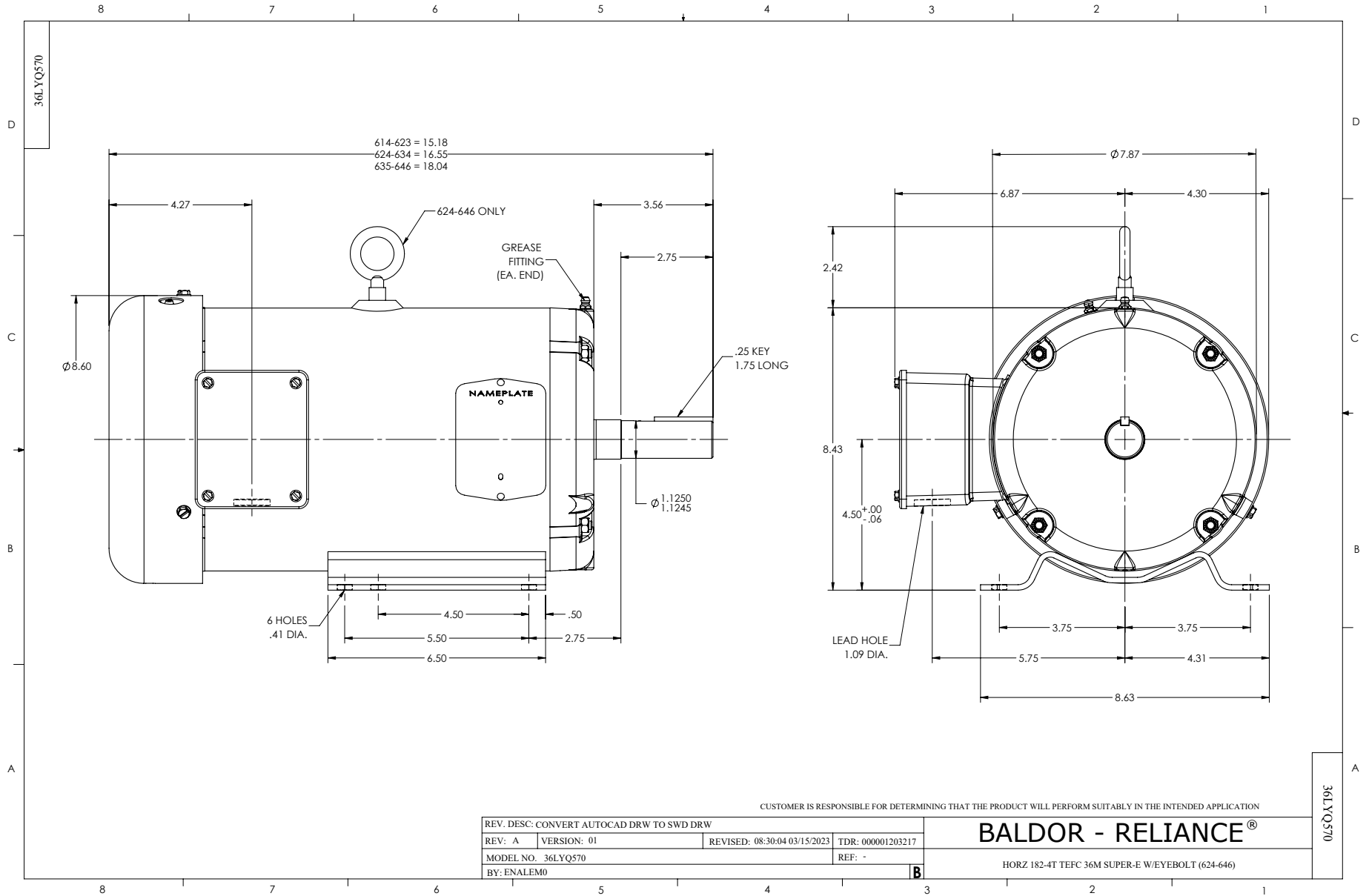
3 HP 3 PH 60 HZ 1760 RPM 208 V 3636M

Typical performance - not guaranteed values.

TORQUES (LB-FT): PO=33.3 PU=16.4 LR=19.4 LRA=65.9



7/8/2026 ACPERF, record # 104162



CUSTOMER IS RESPONSIBLE FOR DETERMINING THAT THE PRODUCT WILL PERFORM SUITABLY IN THE INTENDED APPLICATION

REV. DESC: CONVERT AUTOCAD DRW TO SWD DRW		TDR: 000001203217	
REV: A	VERSION: 01	REVISED: 08:30:04 03/15/2023	REF: -
MODEL NO. 36LYQ570		BY: ENALEM0	

BALDOR - RELIANCE®

HORZ 182-4T TEFC 36M SUPER-E W/EYEBOLT (624-646)

36LYQ570

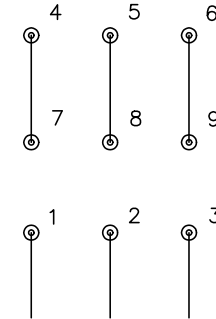
CD0005



LOW VOLTAGE
(2Y)



HIGH VOLTAGE
(1Y)



NOTES:

1. INTERCHANGE ANY TWO LINE LEADS TO REVERSE ROTATION.
2. OPTIONAL THERMOSTATS ARE PROVIDED WHEN SPECIFIED.
3. ACTUAL NUMBER OF INTERNAL PARALLEL CIRCUITS MAY BE A MULTIPLE OF THOSE SHOWN ABOVE.
4. LEAD COLORS ARE OPTIONAL. LEADS MUST ALWAYS BE NUMBERED AS SHOWN.

CD0005

REV. DESC: REVISE TO SHOW OPTIONAL COLORS

REV. LTR: E BY: JLP REVISED: 01/19/99 10:15 TDR: 0171435

500000

FILE: AAA00005140

MDL: -

MTL: -

BALDOR ELECTRIC Co.

3PH, DV, 9 LEADS