

**BALDOR • RELIANCE**

---

# Customer information packet

## GNEM3611T-G

, RPM, OPH, HZ, 182T, TEFC, F1, N

Class - None

Division - Not Applicable

## Specifications

Enclosure	TEFC
Frame	182T
Frame Material	Steel
Frequency	50.00 Hz 60.00 Hz
Haz Area Class and Group	None
Haz Area Division	Not Applicable
Motor Letter Type	Three Phase
Output @ Frequency	3.000 HP @ 50 HZ 3.000 HP @ 60 HZ
Phase	3
Synchronous Speed @ Frequency	1800 RPM @ 60 HZ
Voltage @ Frequency	460.0 V @ 60 HZ 380.0 V @ 50 HZ 230.0 V @ 60 HZ 208.0 V @ 60 HZ 190.0 V @ 50 HZ
Agency Approvals	CE CSA UR
Ambient Temperature	40 °C
Auxillary Box	No Auxillary Box
Auxillary Box Lead Termination	None
Base Indicator	Rigid
Bearing Grease Type	Polyrex EM (-20F +300F)
Blower	None
Current @ Voltage	9.000 A @ 208.0 V 8.800 A @ 230.0 V 5.100 A @ 380.0 V 4.400 A @ 460.0 V 10.200 A @ 190.0 V
Design Code	A
Drip Cover	No Drip Cover

## Part detail

Revision	J
Type	AC
Mech. spec.	36M524
Base	
Status	PRD/A
Elec. spec.	36WGN115
Layout	36LYM524
Eff. date	07-11-2024
CD Diagram	CD0005
Poles	04
Leads	9#16
Proprietary	False
Created date	02-26-2017

Duty Rating	CONT
Efficiency @ 100% Load	90.2 %
Electrically Isolated Bearing	Not Electrically Isolated
Feedback Device	NO FEEDBACK
Front Face Code	Standard
Front Shaft Indicator	None
Heater Indicator	No Heater
High Voltage Full Load Amps	4.4 a
Insulation Class	H
Inverter Code	Inverter Ready
KVA Code	K
Lifting Lugs	No Lifting Lugs
Locked Bearing Indicator	Locked Bearing
Motor Lead Exit	Ko Box
Motor Lead Quantity/Wire Size	9 @ 16 AWG
Motor Lead Termination	Flying Leads
Motor Standards	NEMA
Motor Type	3636M
Mounting Arrangement	F1
Number of Poles	4
Overall Length	18.04 IN
Power Factor	74
Product Family	General Purpose
Pulley End Bearing Type	Ball
Pulley Face Code	Standard
Pulley Shaft Indicator	Standard
Rodent Screen	None
RoHS Status	ROHS COMPLIANT
Service Factor	1.15
Shaft Diameter	1.125 IN
Shaft Extension Location	Pulley End
Shaft Ground Indicator	Shaft Grounding
Shaft Rotation	Reversible
Shaft Slinger Indicator	No Slinger

<b>Speed</b>	1460 rpm 1760 rpm
<b>Speed Code</b>	Single Speed
<b>Starting Method</b>	Direct on line
<b>Thermal Device - Bearing</b>	None
<b>Thermal Device - Winding</b>	None
<b>Vibration Sensor Indicator</b>	No Vibration Sensor
<b>Winding Thermal 1</b>	None
<b>Winding Thermal 2</b>	None

**Nameplate**

<b>NP4304L</b>									
<b>CAT.NO.</b>	GNEM3611T-G								
<b>SPEC.</b>	36M524N115G1								
<b>HP</b>	3/2.2KW				<b>PH</b>	3			
<b>VOLTS</b>	208-230/460//190/380								
<b>AMPS</b>	9-8.8/4.4//10.2/5.1								
<b>R.P.M. (1/MIN)</b>	1760//1460				<b>WT.</b>	40KG		<b>KG</b>	
<b>FRAME</b>	182T		<b>HZ</b>	60//50		<b>I.P.</b>	44		
<b>SER.F.</b>	1.15	<b>CODE</b>	K	<b>DES.</b>	A	<b>CLASS</b>	H		
<b>NOM.EFF.</b>	90.2//87.6		<b>% (100%)</b>						
<b>P.F.</b>	74	IC411, 10:1 VT							
<b>RATING</b>	40C AMB-S1 CONT				<b>CC</b>	010A			
<b>DE</b>	6206		<b>ODE</b>	6205					
<b>ENCL</b>	TEFC	<b>SN</b>							
IE3-50HZ-89.5(75%)88.5(50%)									
IE3-60HZ 89.8(75%),88.0(50%)									

**AC Induction Motor Performance Data**

Record # 62753

Typical performance - not guaranteed values

Winding: 36WGN115-R003		Type: 3636M	Enclosure: TEFC		
<b>Nameplate Data</b>			<b>460 V, 60 Hz: High Voltage Connection</b>		
Rated Output (HP)		3	Full Load Torque	8.96 LB-FT	
Volts	208-230/460//190/380		Start Configuration	direct on line	
Full Load Amps	9-8.8/4.4//10.2/5.1		Breakdown Torque	41.11 LB-FT	
R.P.M.	1760//1460		Pull-up Torque	20.45 LB-FT	
Hz	60//50	Phase	3	Locked-rotor Torque	24.25 LB-FT
NEMA Design Code	A	KVA Code	K	Starting Current	36.84 A
Service Factor (S.F.)			1.15	No-load Current	2.69 A
NEMA Nom. Eff.	90.2	Power Factor	74	Line-line Res. @ 25°C	3.45 Ω
Rating - Duty			40C AMB-CONT	Temp. Rise @ Rated Load	33°C
S.F. Amps				Temp. Rise @ S.F. Load	39°C
				Locked-rotor Power Factor	41.8
				Rotor inertia	0.335 LB-FT <sup>2</sup>

**Load Characteristics 460 V, 60 Hz, 3 HP**

% of Rated Load	25	50	75	100	125	150	S.F.
Power Factor	32	50	63	71	77	80	75
Efficiency	80.6	87.9	89.9	90.1	89.9	88.5	90
Speed	1792	1784	1776	1767	1758	1745	1762
Line amperes	2.88	3.22	3.75	4.41	5.11	6.15	4.83

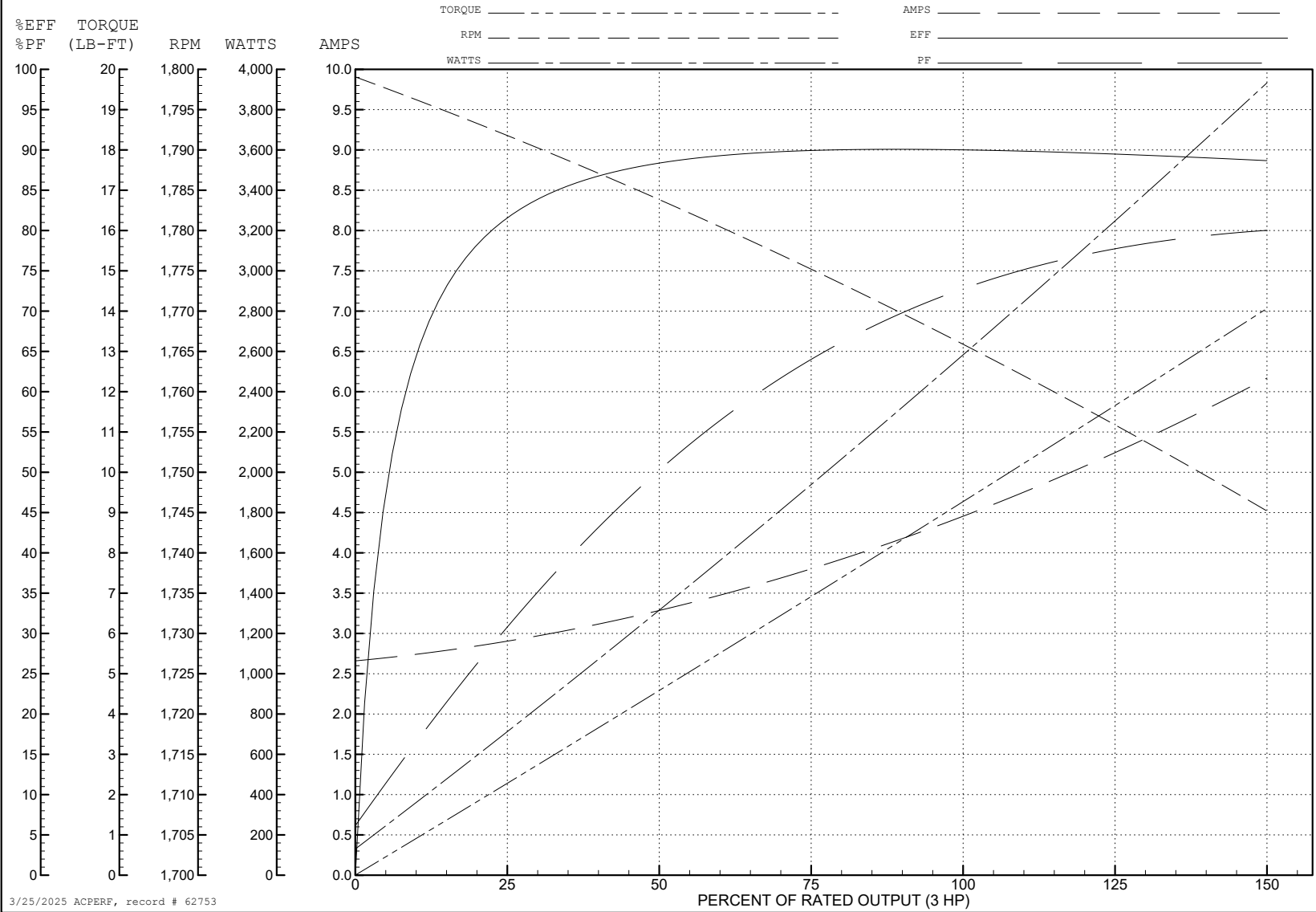
ABB Motors and Mechanical Inc.

WINDING # 36WGN115

3 HP 3 PH 60 HZ 1767 RPM 460 V 3636M

Typical performance - not guaranteed values.

TORQUES (LB-FT): PO=41.11 PU=20.45 LR=24.25 LRA=36.84



3/25/2025 ACPERF, record # 62753

**AC Induction Motor Performance Data**

Record # 62754

Typical performance - not guaranteed values

Winding: 36WGN115-R003		Type: 3636M	Enclosure: TEFC		
<b>Nameplate Data</b>			<b>380 V, 50 Hz: High Voltage Connection</b>		
Rated Output (HP)		3	Full Load Torque	10.84 LB-FT	
Volts	208-230/460//190/380		Start Configuration	direct on line	
Full Load Amps	9-8.8/4.4//10.2/5.1		Breakdown Torque	38.77 LB-FT	
R.P.M.	1760//1460		Pull-up Torque	20.79 LB-FT	
Hz	60//50	Phase	3	Locked-rotor Torque	24.65 LB-FT
NEMA Design Code	A	KVA Code	K	Starting Current	35.48 A
Service Factor (S.F.)			1.15	No-load Current	2.65 A
NEMA Nom. Eff.	90.2	Power Factor	74	Line-line Res. @ 25°C	3.45 Ω
Rating - Duty			40C AMB-CONT	Temp. Rise @ Rated Load	41°C
S.F. Amps				Temp. Rise @ S.F. Load	50°C
				Locked-rotor Power Factor	46.5
				Rotor inertia	0.335 LB-FT <sup>2</sup>

**Load Characteristics 380 V, 50 Hz, 3 HP**

% of Rated Load	25	50	75	100	125	150	S.F.
Power Factor	37	57	69	76	80	83	78
Efficiency	82.5	88.6	89.5	89.1	88.1	85.9	88.5
Speed	1490	1481	1471	1460	1449	1433	1453
Line amperes	2.91	3.4	4.16	5.06	6.03	7.42	5.64



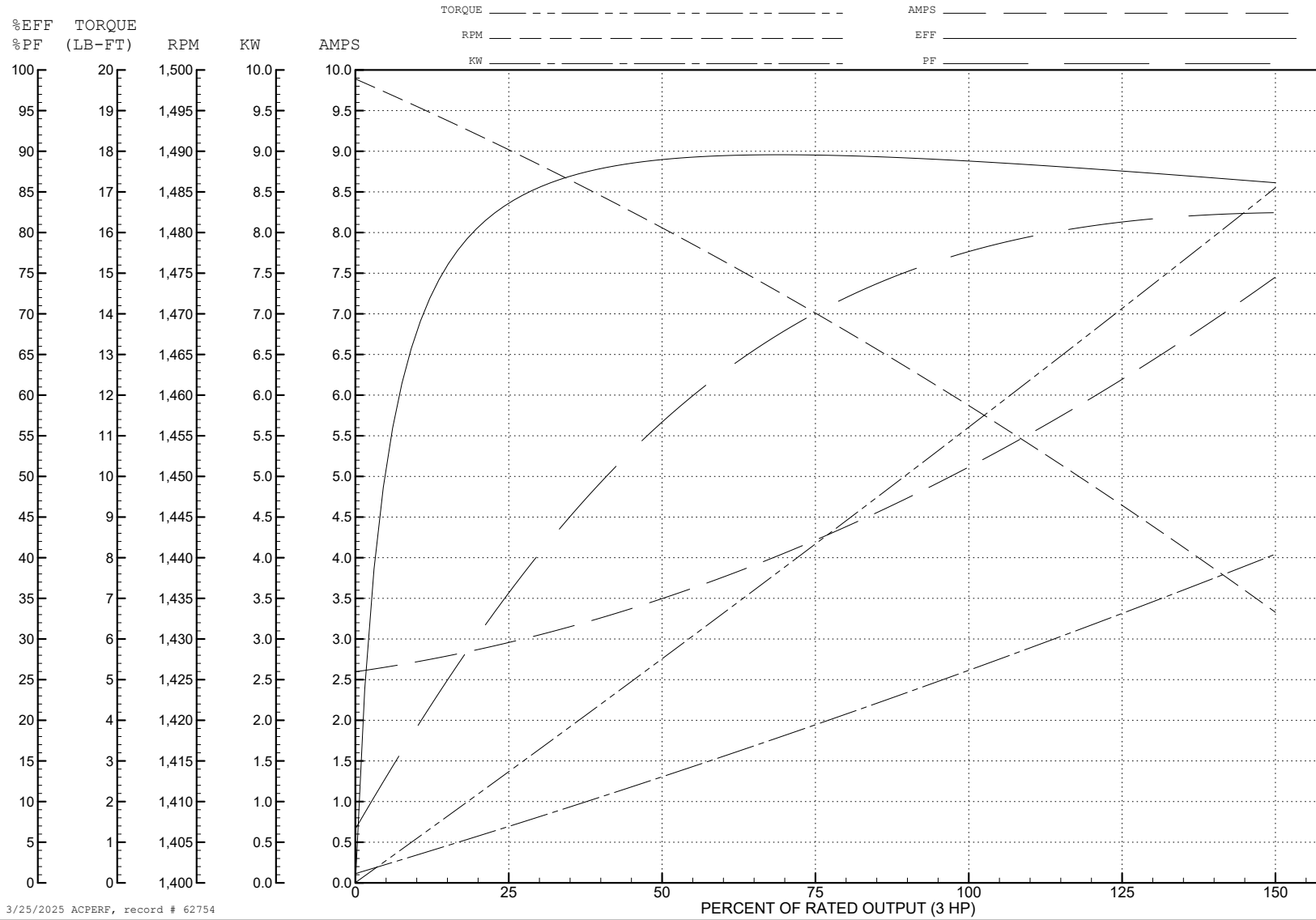
ABB Motors and Mechanical Inc.

WINDING # 36WGN115

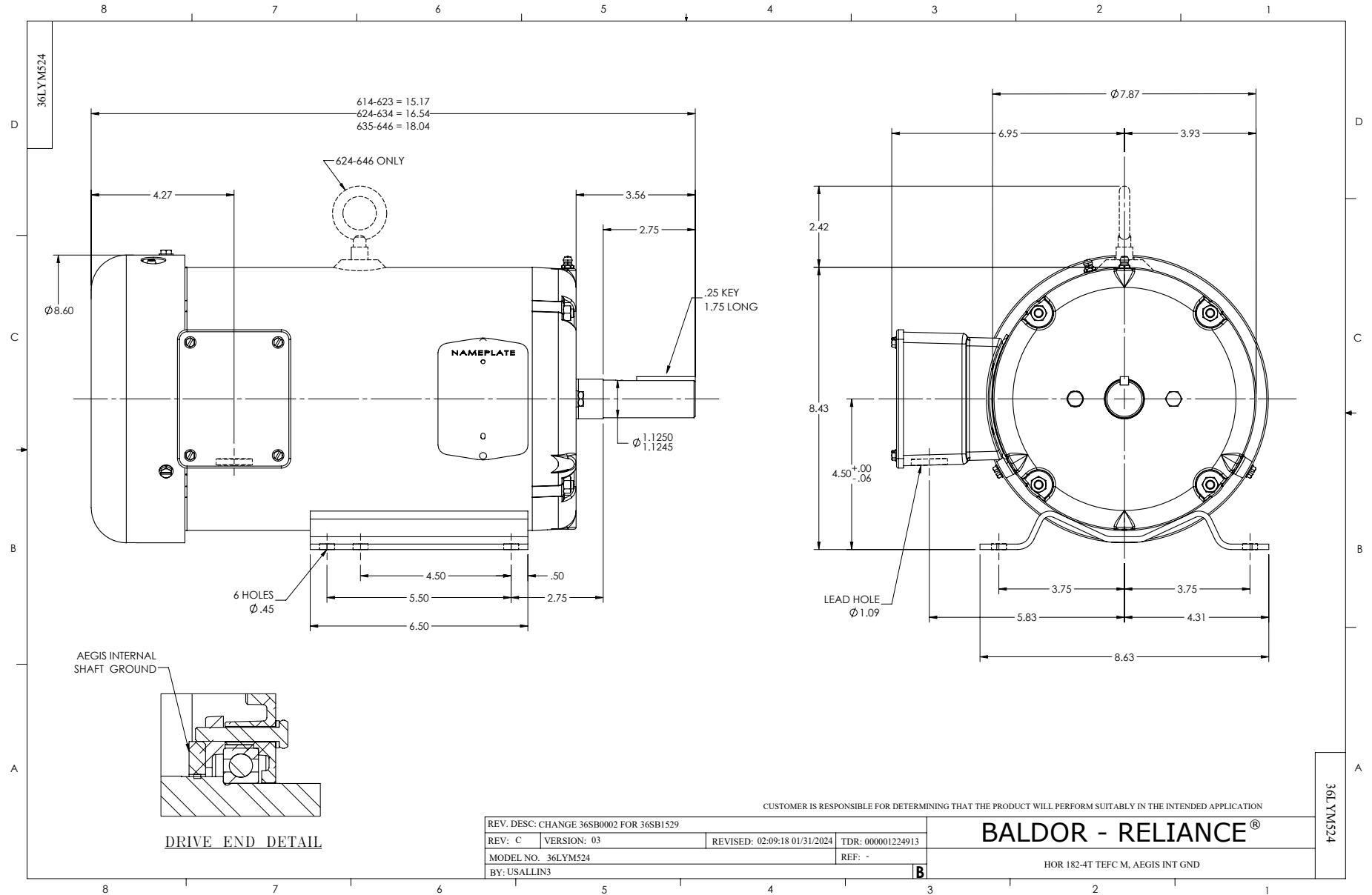
3 HP 3 PH 50 HZ 1460 RPM 380 V 3636M

Typical performance - not guaranteed values.

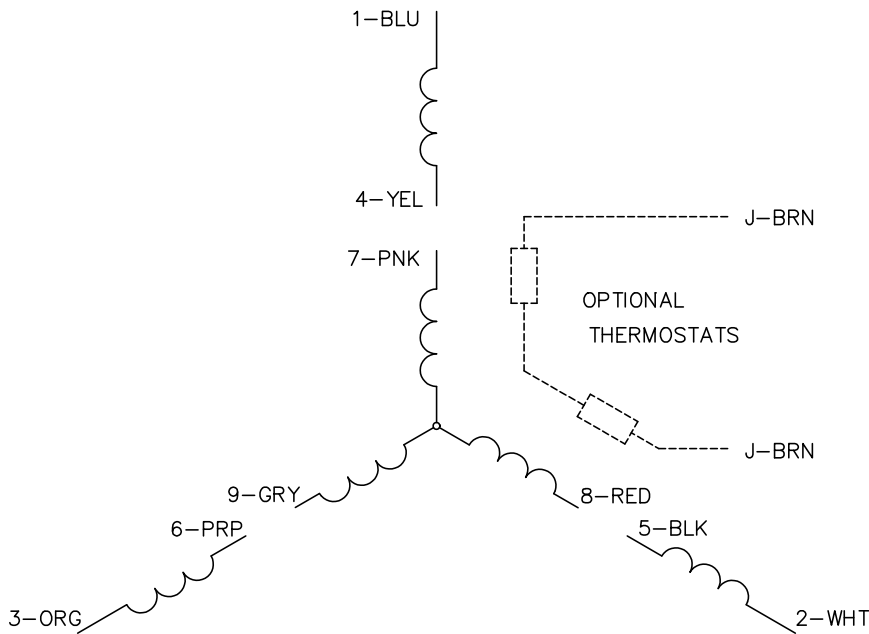
TORQUES (LB-FT): PO=38.77 PU=20.79 LR=24.65 LRA=35.48



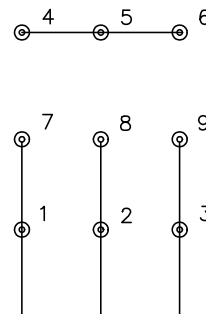
3/25/2025 ACPERF, record # 62754



CD0005

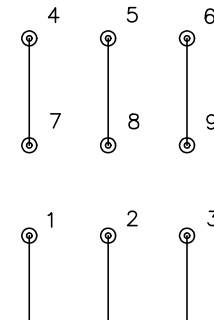


LOW VOLTAGE  
(2Y)



LINE

HIGH VOLTAGE  
(1Y)



LINE

NOTES:

1. INTERCHANGE ANY TWO LINE LEADS TO REVERSE ROTATION.
2. OPTIONAL THERMOSTATS ARE PROVIDED WHEN SPECIFIED.
3. ACTUAL NUMBER OF INTERNAL PARALLEL CIRCUITS MAY BE A MULTIPLE OF THOSE SHOWN ABOVE.
4. LEAD COLORS ARE OPTIONAL. LEADS MUST ALWAYS BE NUMBERED AS SHOWN.

CD0005

REV. DESC: REVISE TO SHOW OPTIONAL COLORS			
REV. LTR: E	BY: JLP	REVISED: 01/19/99 10:15	TDR: 0171435
S00000		FILE: AAA00005140	MDL: -
		MTL: -	

**BALDOR ELECTRIC Co.**

3PH, DV, 9 LEADS