

ABB BALDOR RELIANCE III

Customer information packet

GNEM3556T-G

1HP//.75KW, 1170//965RPM, 3PH, 60//50HZ, 145

Class - None

Division - Not Applicable

Specifications

Enclosure	TEFC
Frame	145T
Frame Material	Steel
Frequency	50.00 Hz 60.00 Hz
Haz Area Class and Group	None
Haz Area Division	Not Applicable
Motor Letter Type	Three Phase
Output @ Frequency	1.000 HP @ 60 HZ .750 KW @ 50 HZ
Phase	3
Synchronous Speed @ Frequency	1200 RPM @ 60 HZ
Voltage @ Frequency	190.0 V @ 50 HZ 208.0 V @ 60 HZ 230.0 V @ 60 HZ 380.0 V @ 50 HZ 460.0 V @ 60 HZ
Agency Approvals	CE WEEE UKCA CURUSEEV IE3 NEMA PREMIUM
Ambient Temperature	40 °C
Auxiliary Box	NO AUXILLARY BOX
Auxiliary Box Lead Termination	None
Base Indicator	Rigid
Bearing Grease Type	Polyrex EM (-20F +300F)
Blower	None
Current @ Voltage	4.000 A @ 190.0 V 3.600 A @ 208.0 V 3.560 A @ 230.0 V

Part Detail

Revision	D
Type	AC
Mech. spec.	35Z063
Base	
Status	PRD/A
Elec. spec.	35WGG330
Layout	35LYZ063
Eff. date	01-14-2026
CD Diagram	CD0005
Poles	06
Leads	9#18
Proprietary	False
Created date	09-11-2023

	2.000 A @ 380.0 V
	1.780 A @ 460.0 V
Design Code	B
Drip Cover	No Drip Cover
Duty Rating	CONT
Efficiency @ 100% Load	82.5 %
Electrically Isolated Bearing	Not Electrically Isolated
Feedback Device	NO FEEDBACK
Front Shaft Indicator	None
Heater Indicator	No Heater
High Voltage Full Load Amps	1.8 a
Insulation Class	F
Inverter Code	Inverter Ready
KVA Code	K
Lifting Lugs	No Lifting Lugs
Locked Bearing Indicator	Locked Bearing
Motor Lead Quantity/Wire Size	9 @ 18 AWG
Motor Lead Termination	Flying Leads
Motor Standards	NEMA
Motor Type	3526M
Mounting Arrangement	F1
Number of Poles	6
Overall Length	13.28 IN
Power Factor	64
Product Family	General Purpose
Pulley End Bearing Type	Ball
Pulley Face Code	Standard
Pulley Shaft Indicator	Standard
Rodent Screen	None
RoHS Status	ROHS COMPLIANT
Service Factor	1.15
Shaft Diameter	0.875 IN
Shaft Ground Indicator	Shaft Grounding
Shaft Rotation	Reversible

Shaft Slinger Indicator	No Slinger
Speed	1170 rpm 965 rpm
Speed Code	Single Speed
Starting Method	Direct on line
Thermal Device - Bearing	None
Thermal Device - Winding	None
Vibration Sensor Indicator	No Vibration Sensor
Winding Thermal 1	None
Winding Thermal 2	None

Nameplate

NP4304L										
CAT.NO.	GNEM3556T-G									
SPEC.	35Z063G330G1									
HP	1HP//.75KW				PH	3				
VOLTS	208-230/460//190/380									
AMPS	3.6-3.56/1.78//4/2									
R.P.M. (1/MIN)	1170//965				WT.	19KG	KG			
FRAME	145T	HZ	60//50		I.P.	44				
SER.F.	1.15	CODE	K	DES.	B	CLASS	H			
NOM.EFF.	82.5//78.9		% (100%)							
P.F.	64	IC411, 10:1 VT								
RATING	40C AMB-S1 CONT				CC	010A				
DE	6205	ODE	6203							
ENCL	TEFC	SN								
	SFA 4/2//4.6/2.3									
	IE3-50HZ 81.7(75%),81.0(50%)									
	IE3-60HZ 82.3(75%),80.1(50%)									

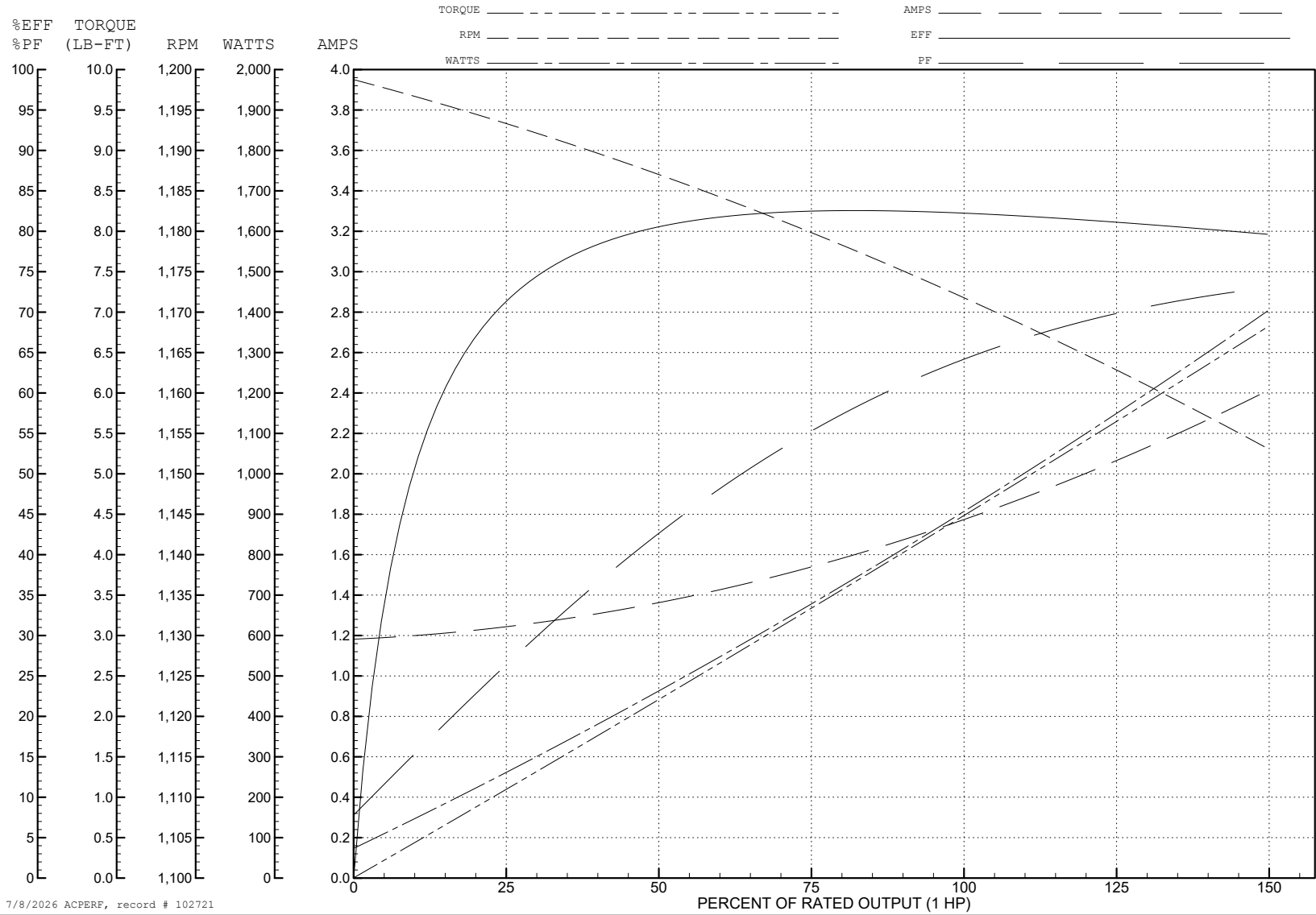
ABB Motors and Mechanical Inc.

WINDING # 35WGG330

Typical performance - not guaranteed values.

1 HP 3 PH 60 HZ 1172 RPM 460 V 3526M

TORQUES (LB-FT): PO=13.2 PU=7.9 LR=9.7 LRA=10.2



7/8/2026 ACPERF, record # 102721

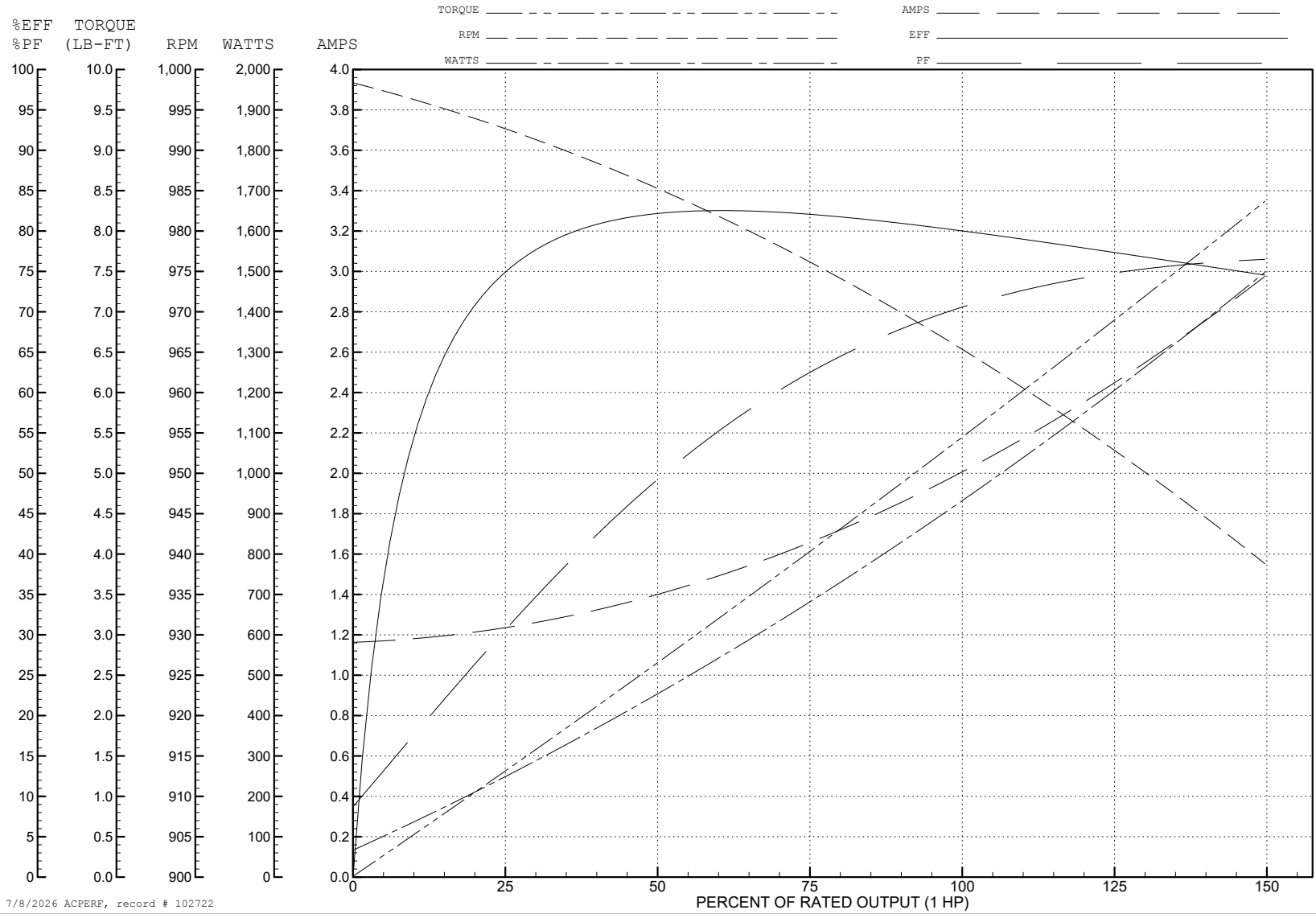
ABB Motors and Mechanical Inc.

WINDING # 35WGG330

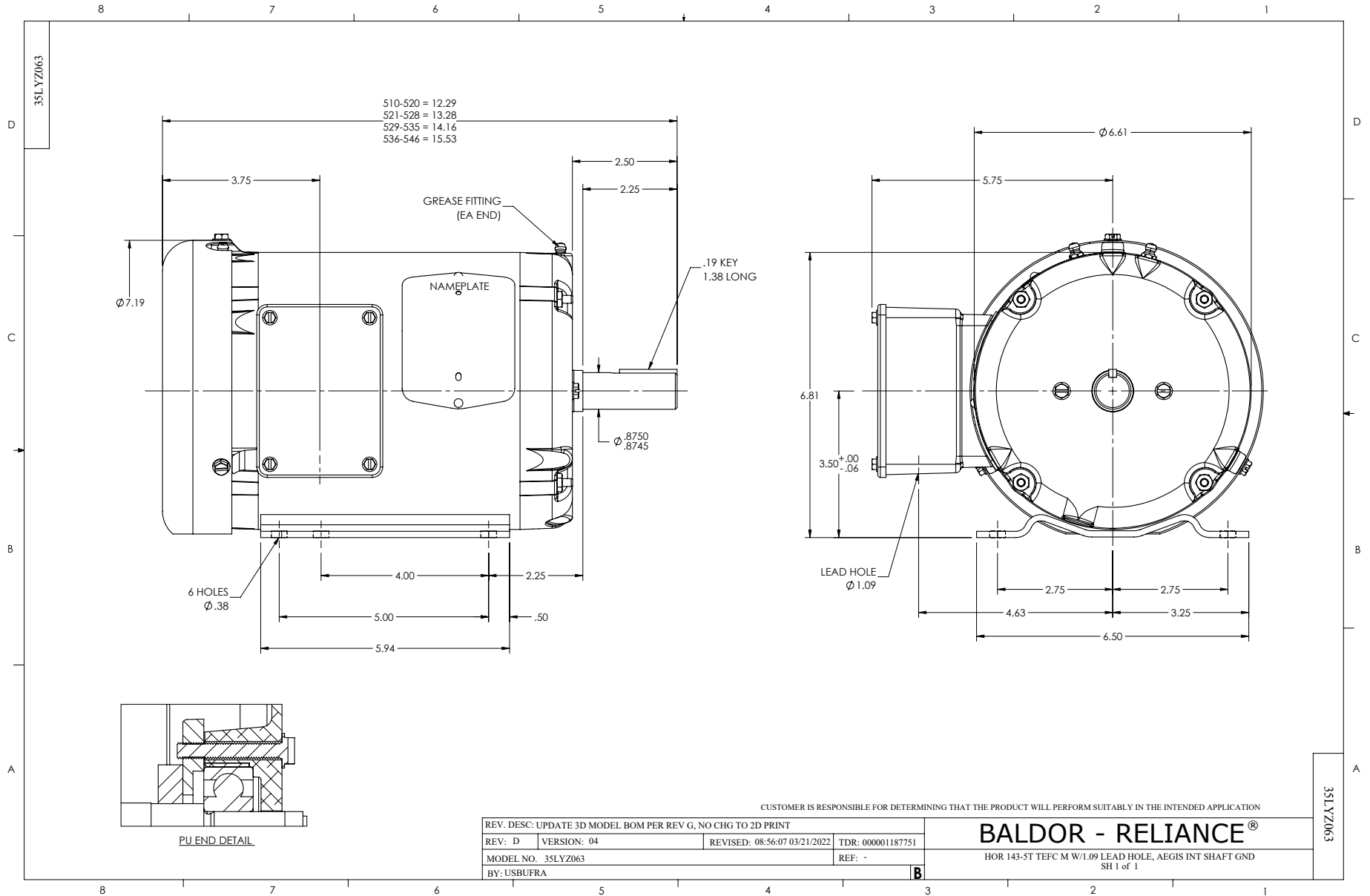
Typical performance - not guaranteed values.

1 HP 3 PH 50 HZ 966 RPM 380 V 3526M

TORQUES (LB-FT): PO=12.2 PU=7.8 LR=9.5 LRA=9.7



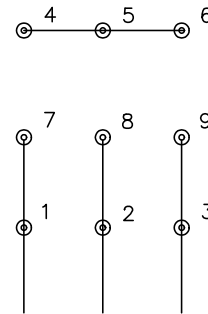
7/8/2026 ACPERF, record # 102722



CD0005



LOW VOLTAGE
(2Y)



LINE

HIGH VOLTAGE
(1Y)



LINE

NOTES:

1. INTERCHANGE ANY TWO LINE LEADS TO REVERSE ROTATION.
2. OPTIONAL THERMOSTATS ARE PROVIDED WHEN SPECIFIED.
3. ACTUAL NUMBER OF INTERNAL PARALLEL CIRCUITS MAY BE A MULTIPLE OF THOSE SHOWN ABOVE.
4. LEAD COLORS ARE OPTIONAL. LEADS MUST ALWAYS BE NUMBERED AS SHOWN.

CD0005

REV. DESC: REVISE TO SHOW OPTIONAL COLORS

REV. LTR: E BY: JLP REVISED: 01/19/99 10:15 TDR: 0171435

500000

FILE: AAA00005140

MDL: -

MTL: -

BALDOR ELECTRIC Co.

3PH, DV, 9 LEADS