

ABB BALDOR RELIANCE III

Customer information packet

GNEM3313T

10HP//7.5KW, 1770//1470 1/MINRPM, 3PH, 60//

Class - None

Division - Not Applicable

Specifications

Enclosure	OPSB
Frame	215T
Frame Material	Steel
Frequency	50.00 Hz 60.00 Hz
Haz Area Class and Group	None
Haz Area Division	Not Applicable
Motor Letter Type	Three Phase
Output @ Frequency	7.500 KW @ 50 HZ 10.000 HP @ 60 HZ
Phase	3
Synchronous Speed @ Frequency	1800 RPM @ 60 HZ
Voltage @ Frequency	208.0 V @ 60 HZ 190.0 V @ 50 HZ 230.0 V @ 60 HZ 380.0 V @ 50 HZ 460.0 V @ 60 HZ
Agency Approvals	WEEE UKCA NEMA PREMIUM (OLD LOGO) NEMA PREMIUM IE3 CURUS CE
Ambient Temperature	40 °C
Auxiliary Box	NO AUXILLARY BOX
Auxiliary Box Lead Termination	None
Base Indicator	Rigid
Bearing Grease Type	Polyrex EM (-20F +300F)
Blower	None
Current @ Voltage	32.000 A @ 190.0 V 28.000 A @ 208.0 V

Part Detail

Revision	H
Type	AC
Mech. spec.	37F614
Base	
Status	PRD/A
Elec. spec.	37WGZ674
Layout	37LYF614
Eff. date	01-22-2026
CD Diagram	CD0005
Poles	04
Leads	9#14
Proprietary	False
Created date	04-12-2023

26.800 A @ 230.0 V

16.000 A @ 380.0 V

13.400 A @ 460.0 V

Design Code	A
Drip Cover	No Drip Cover
Duty Rating	CONT
Efficiency @ 100% Load	91.7 %
Electrically Isolated Bearing	Not Electrically Isolated
Feedback Device	NO FEEDBACK
Front Shaft Indicator	None
Heater Indicator	No Heater
High Voltage Full Load Amps	13.4 a
Insulation Class	F
Inverter Code	Inverter Duty
KVA Code	L
Lifting Lugs	Standard Lifting Lugs
Locked Bearing Indicator	No Locked Bearing
Motor Lead Quantity/Wire Size	9 @ 14 AWG
Motor Lead Termination	Flying Leads
Motor Standards	NEMA
Motor Type	3748M
Mounting Arrangement	F1
Number of Poles	4
Overall Length	18.20 IN
Power Factor	76
Product Family	General Purpose
Pulley End Bearing Type	Ball
Pulley Face Code	Standard
Pulley Shaft Indicator	Standard
Rodent Screen	None
RoHS Status	ROHS COMPLIANT
Service Factor	1.15
Shaft Diameter	1.375 IN
Shaft Ground Indicator	No Shaft Grounding

Shaft Rotation	Reversible
Shaft Slinger Indicator	No Slinger
Speed	1470 rpm 1770 rpm
Speed Code	Single Speed
Starting Method	Direct on line
Thermal Device - Bearing	None
Thermal Device - Winding	None
Vibration Sensor Indicator	No Vibration Sensor
Winding Thermal 1	None
Winding Thermal 2	None

Nameplate

NP4304L									
CAT.NO.	GNEM3313T								
SPEC.	37F614Z674G1								
HP	10HP/7.5KW				PH	3			
VOLTS	208-230/460//190/380								
AMPS	28-26.8/13.4//32/16								
R.P.M. (1/MIN)	1770//1470				WT.	65KG	KG		
FRAME	215T	HZ	60//50		I.P.	22			
SER.F.	1.15	CODE	L	DES.	A	CLASS	F		
NOM.EFF.	91.7//90.4		% (100%)						
P.F.	76	IC01, 10:1 VT							
RATING	40C AMB-S1 CONT			CC	010A				
DE	6307	ODE	6206						
ENCL	OPSB	SN							
	IE3-60HZ-92.5(75%)91.5(50%)								
	IE3-50HZ-91.7(75%)91.6(50%)								
	SFA 31-30/15//34/17								

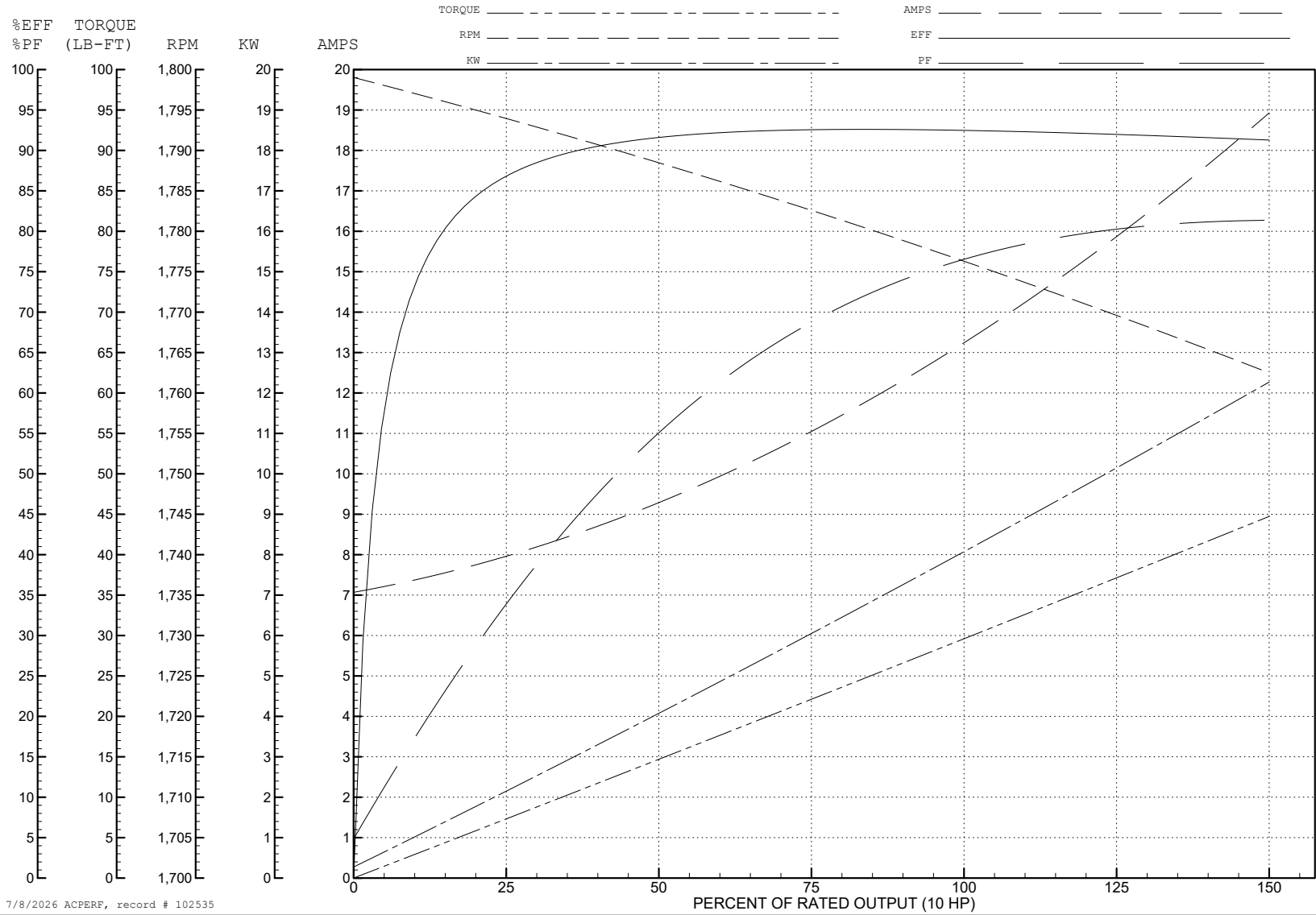
ABB Motors and Mechanical Inc.

WINDING # 37WGZ674

Typical performance - not guaranteed values.

10 HP 3 PH 60 HZ 1776.1 RPM 460 V 3748M

TORQUES (LB-FT): PO=131 PU=58.7 LR=77.9 LRA=119



7/8/2026 ACPERF, record # 102535

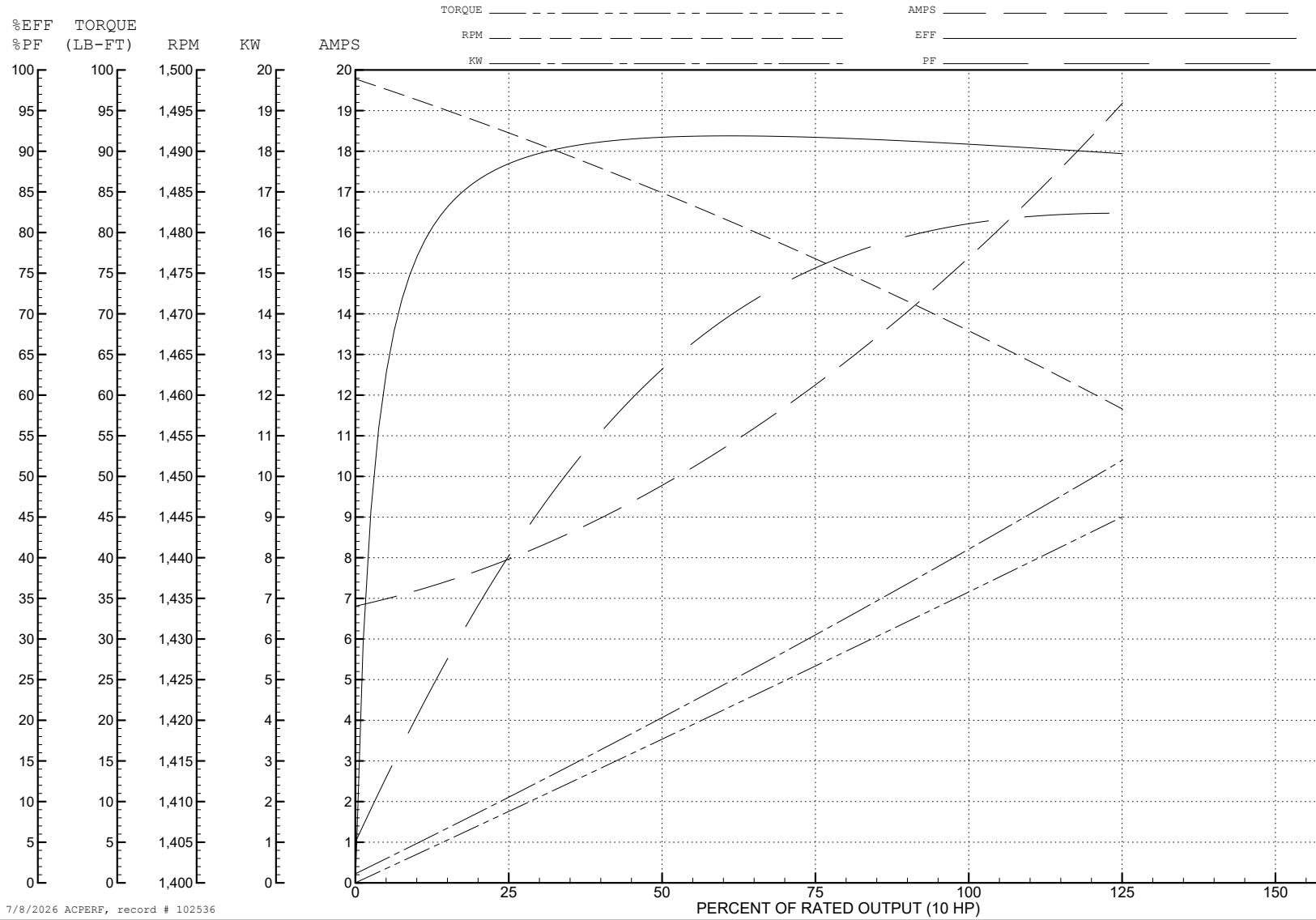
ABB Motors and Mechanical Inc.

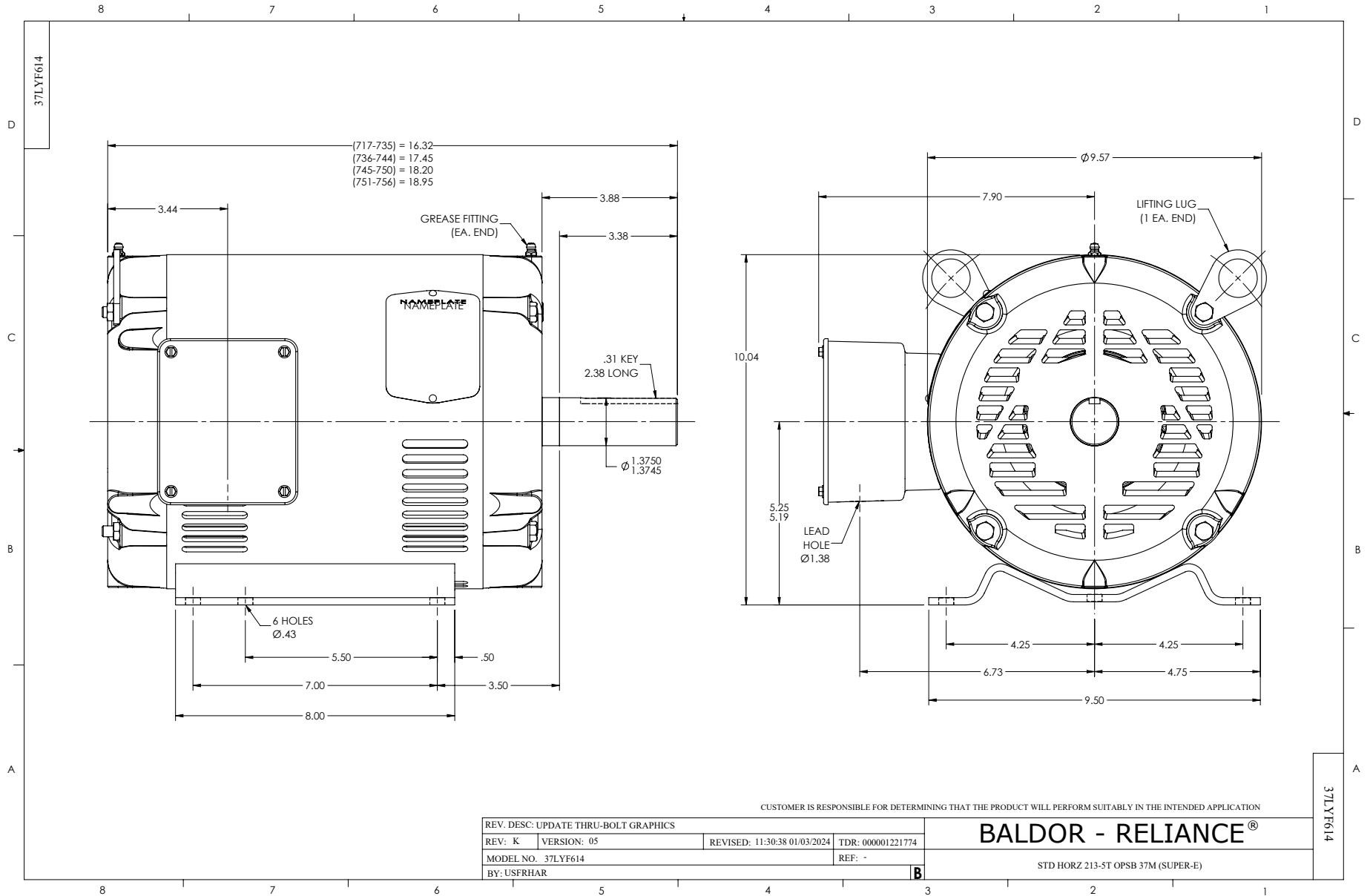
WINDING # 37WGZ674

Typical performance - not guaranteed values.

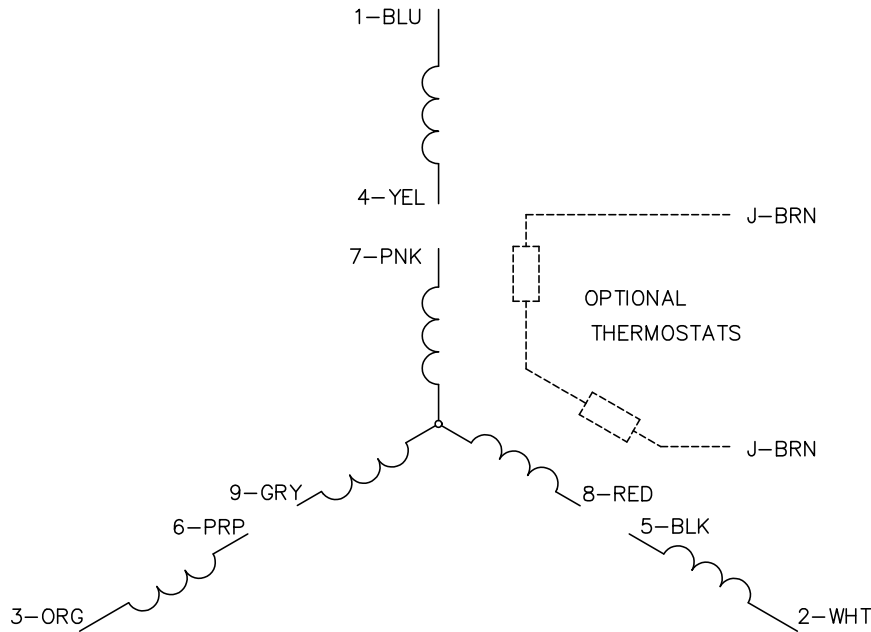
10 HP 3 PH 50 HZ 1468.1 RPM 380 V 3748M

TORQUES (LB-FT): PO=113 PU=53.7 LR=77.9 LRA=109





CD0005



LOW VOLTAGE
(2Y)



LINE

HIGH VOLTAGE
(1Y)



LINE

NOTES:

1. INTERCHANGE ANY TWO LINE LEADS TO REVERSE ROTATION.
2. OPTIONAL THERMOSTATS ARE PROVIDED WHEN SPECIFIED.
3. ACTUAL NUMBER OF INTERNAL PARALLEL CIRCUITS MAY BE A MULTIPLE OF THOSE SHOWN ABOVE.
4. LEAD COLORS ARE OPTIONAL. LEADS MUST ALWAYS BE NUMBERED AS SHOWN.

REV. DESC: REVISE TO SHOW OPTIONAL COLORS			
REV. LTR: E	BY: JLP	REVISED: 01/19/99 10:15	TDR: 0171435
S00000		FILE: AAA00005140	MDL: -
		MTL: -	

BALDOR ELECTRIC Co.

3PH, DV, 9 LEADS

CD0005