

ABB BALDOR RELIANCE III

Customer information packet

GNEM3311T-G

7.5HP, 1770//1460RPM, 3PH, 60//50HZ, 213T, 37

Class - None

Division - Not Applicable

Specifications

Enclosure	OPSB
Frame	213T
Frame Material	Steel
Frequency	50.00 Hz 60.00 Hz
Haz Area Class and Group	None
Haz Area Division	Not Applicable
Motor Letter Type	Three Phase
Output @ Frequency	7.500 HP @ 50 HZ 7.500 HP @ 60 HZ
Phase	3
Synchronous Speed @ Frequency	1800 RPM @ 60 HZ
Voltage @ Frequency	380.0 V @ 50 HZ 230.0 V @ 60 HZ 208.0 V @ 60 HZ 190.0 V @ 50 HZ 460.0 V @ 60 HZ
Agency Approvals	CSA CE UR
Ambient Temperature	40 °C
Auxiliary Box	NO AUXILLARY BOX
Auxiliary Box Lead Termination	None
Base Indicator	Rigid
Bearing Grease Type	Polyrex EM (-20F +300F)
Blower	None
Current @ Voltage	22.800 A @ 190.0 V 9.700 A @ 460.0 V 20.400 A @ 208.0 V 19.700 A @ 208.0 V 19.400 A @ 230.0 V 11.400 A @ 380.0 V

Part Detail

Revision	M
Type	AC
Mech. spec.	37J839
Base	
Status	PRD/A
Elec. spec.	37WGZ617
Layout	37LYJ839
Eff. date	01-08-2026
CD Diagram	CD0005
Poles	04
Leads	9#14
Proprietary	False
Created date	02-26-2017

Design Code	B
Drip Cover	No Drip Cover
Duty Rating	CONT
Efficiency @ 100% Load	91.7 %
Electrically Isolated Bearing	Not Electrically Isolated
Feedback Device	NO FEEDBACK
Front Face Code	Standard
Front Shaft Indicator	None
Heater Indicator	No Heater
High Voltage Full Load Amps	9.7 a
Insulation Class	H
Inverter Code	Inverter Ready
KVA Code	J
Lifting Lugs	Standard Lifting Lugs
Locked Bearing Indicator	Locked Bearing
Motor Lead Exit	Ko Box
Motor Lead Quantity/Wire Size	9 @ 14 AWG
Motor Lead Termination	Flying Leads
Motor Standards	NEMA
Motor Type	3738M
Mounting Arrangement	F1
Number of Poles	4
Overall Length	17.45 IN
Power Factor	80
Product Family	General Purpose
Pulley End Bearing Type	Ball
Pulley Face Code	Standard
Pulley Shaft Indicator	Standard
Rodent Screen	None
RoHS Status	ROHS COMPLIANT
Service Factor	1.15
Shaft Diameter	1.375 IN
Shaft Extension Location	Pulley End
Shaft Ground Indicator	Shaft Grounding

Shaft Rotation	Reversible
Shaft Slinger Indicator	No Slinger
Speed	1460 rpm 1770 rpm
Speed Code	Single Speed
Starting Method	Direct on line
Thermal Device - Bearing	None
Thermal Device - Winding	None
Vibration Sensor Indicator	No Vibration Sensor
Winding Thermal 1	None
Winding Thermal 2	None

Nameplate

NP4304L									
CAT.NO.	GNEM3311T-G								
SPEC.	37J839Z617G1								
HP	7.5/5.5KW				PH	3			
VOLTS	208-230/460//190/380								
AMPS	20.4-19.4/9.7//22.8/11.4								
R.P.M. (1/MIN)	1770//1460				WT.	64KG	KG		
FRAME	213T	HZ	60//50		I.P.	23			
SER.F.	1.15	CODE	J	DES.	B	CLASS	H		
NOM.EFF.	91.7//89.6		% (100%)						
P.F.	80	IC01, 10:1 VT							
RATING	40C AMB-s1 CONT			CC	010A				
DE	6307	ODE	6206						
ENCL	OPSB	SN							
	IE3-50HZ 91.2(75%),90.4(50%)								
	IE3-60HZ 91.8(75%),90.4(50%)								

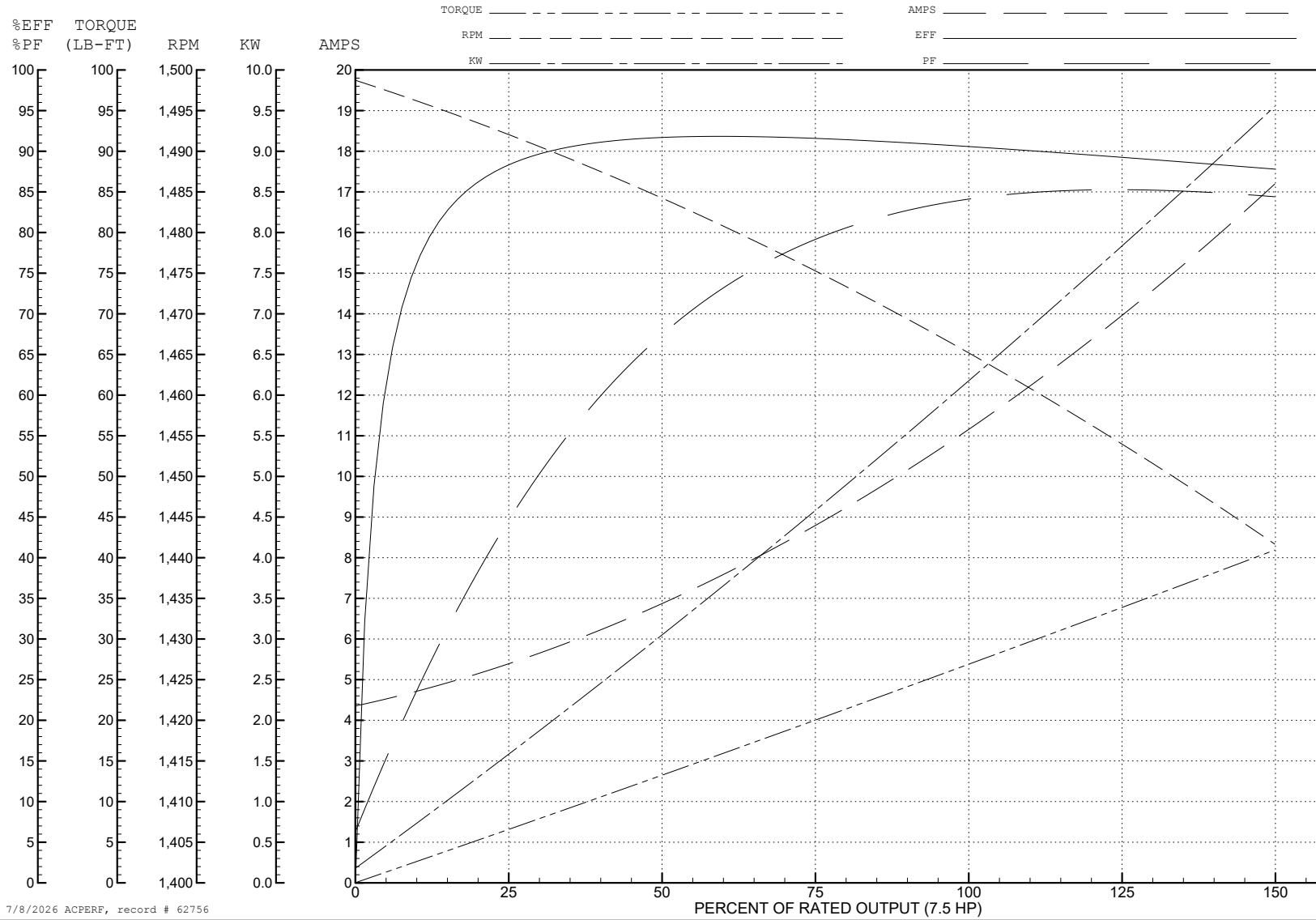
ABB Motors and Mechanical Inc.

WINDING # 37WGZ617

Typical performance - not guaranteed values.

7.5 HP 3 PH 50 HZ 1465 RPM 380 V 3738M

TORQUES (LB-FT): PO=76.52 PU=40.37 LR=48.4 LRA=71.13



7/8/2026 ACPERF, record # 62756

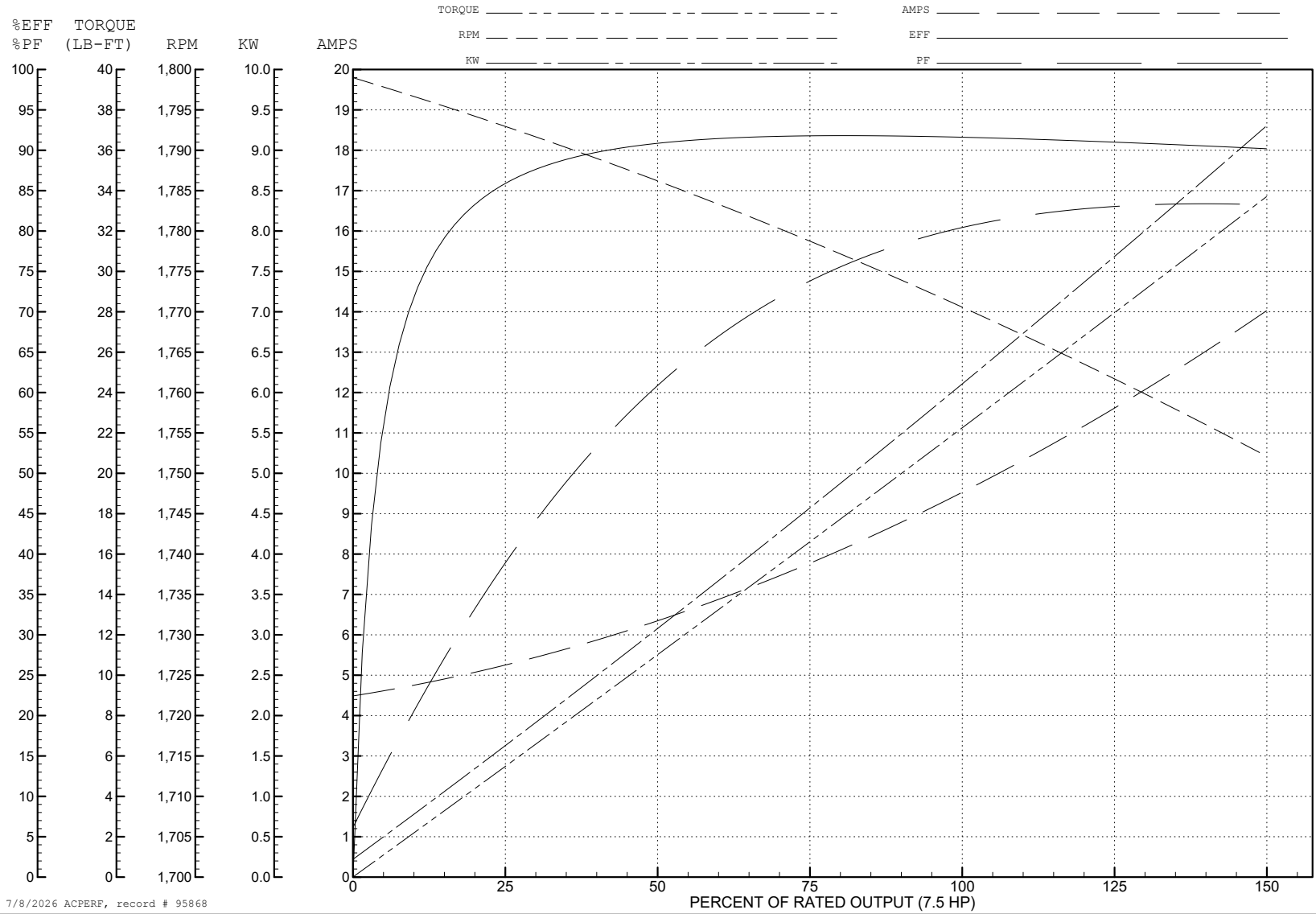
ABB Motors and Mechanical Inc.

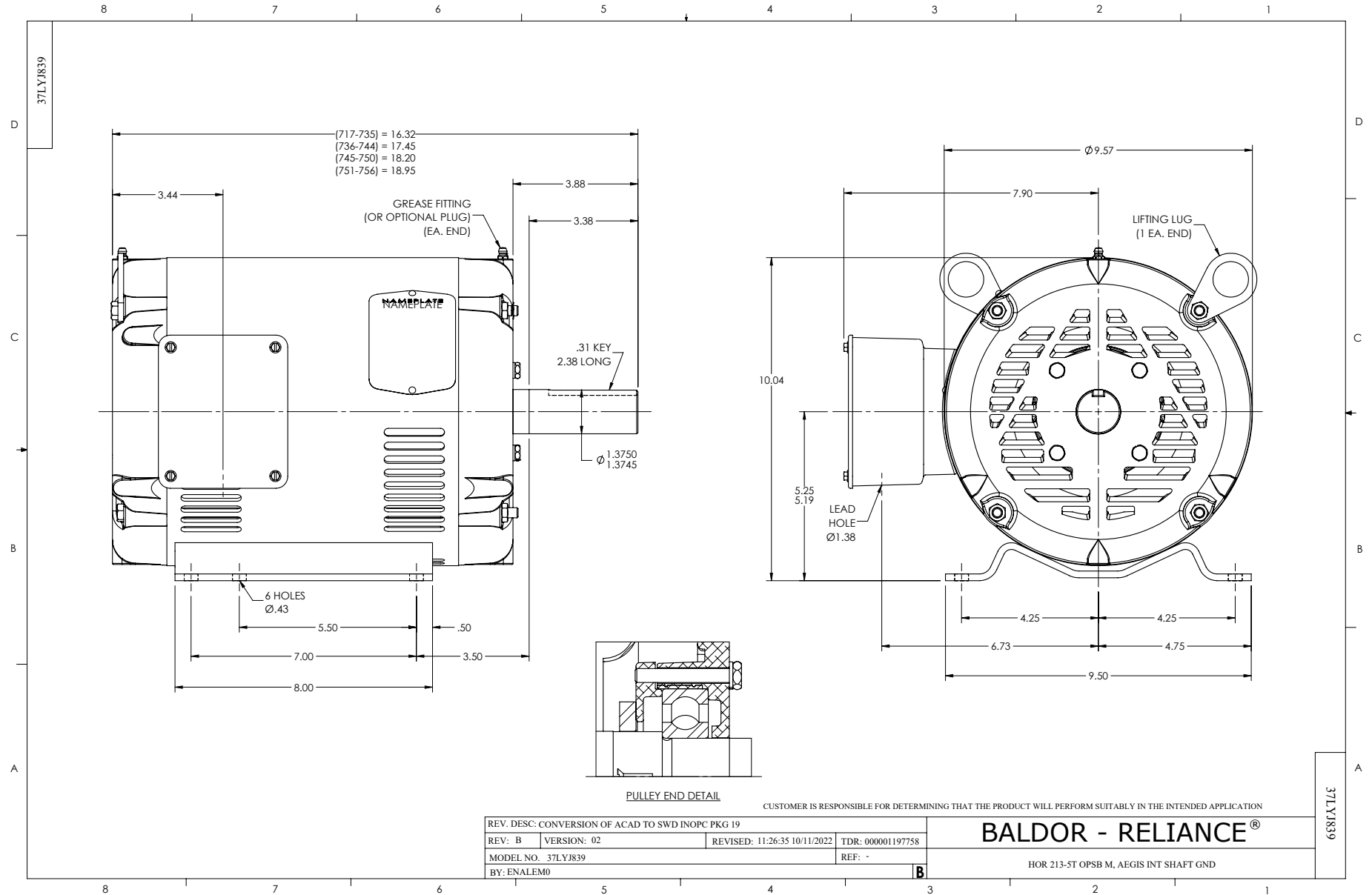
WINDING # 37WGZ617

Typical performance - not guaranteed values.

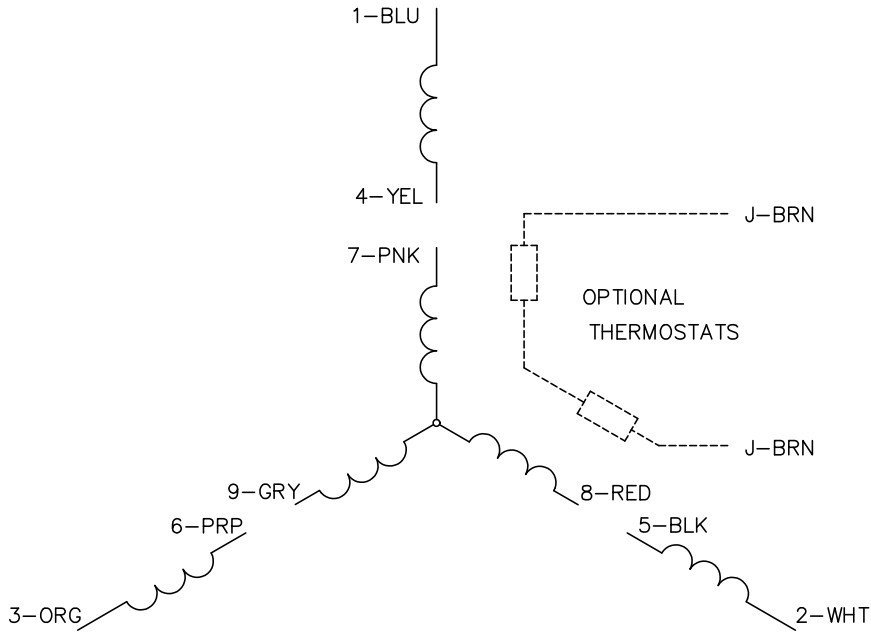
7.5 HP 3 PH 60 HZ 1770 RPM 460 V 3738M

TORQUES (LB-FT): PO=80.4 PU=39.2 LR=47 LRA=73.5





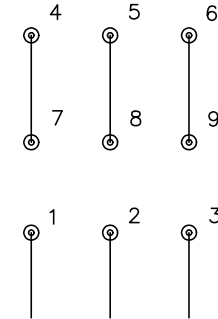
CD0005



LOW VOLTAGE
(2Y)



HIGH VOLTAGE
(1Y)



NOTES:

1. INTERCHANGE ANY TWO LINE LEADS TO REVERSE ROTATION.
2. OPTIONAL THERMOSTATS ARE PROVIDED WHEN SPECIFIED.
3. ACTUAL NUMBER OF INTERNAL PARALLEL CIRCUITS MAY BE A MULTIPLE OF THOSE SHOWN ABOVE.
4. LEAD COLORS ARE OPTIONAL. LEADS MUST ALWAYS BE NUMBERED AS SHOWN.

CD0005

REV. DESC: REVISE TO SHOW OPTIONAL COLORS			
REV. LTR: E	BY: JLP	REVISED: 01/19/99 10:15	TDR: 0171435
S00000		FILE: AAA00005140	MDL: -
		MTL: -	

BALDOR ELECTRIC Co.

3PH, DV, 9 LEADS