

ABB BALDOR RELIANCE III

Customer information packet

GNEM3305T

3HP//2.2KW, 1165//960RPM, 3PH, 60//50HZ, 213

Class - None

Division - Not Applicable

Specifications

Enclosure	OPSB
Frame	213T
Frame Material	Steel
Frequency	50.00 Hz 60.00 Hz
Haz Area Class and Group	None
Haz Area Division	Not Applicable
Motor Letter Type	Three Phase
Output @ Frequency	3.000 HP @ 60 HZ 2.200 KW @ 50 HZ
Phase	3
Synchronous Speed @ Frequency	1200 RPM @ 60 HZ
Voltage @ Frequency	190.0 V @ 50 HZ 208.0 V @ 60 HZ 230.0 V @ 60 HZ 380.0 V @ 50 HZ 460.0 V @ 60 HZ
Agency Approvals	CE WEEE UKCA CURUSEEV IE3 NEMA PREMIUM
Ambient Temperature	40 °C
Auxiliary Box	NO AUXILLARY BOX
Auxiliary Box Lead Termination	None
Base Indicator	Rigid
Bearing Grease Type	Polyrex EM (-20F +300F)
Blower	None
Current @ Voltage	9.400 A @ 208.0 V 9.400 A @ 190.0 V 9.000 A @ 230.0 V

Part Detail

Revision	C
Type	AC
Mech. spec.	37F614
Base	
Status	PRD/A
Elec. spec.	37WGR333
Layout	37LYF614
Eff. date	04-06-2026
CD Diagram	CD0005
Poles	06
Leads	9#14
Proprietary	False
Created date	09-01-2023

	4.700 A @ 380.0 V
	4.500 A @ 460.0 V
Design Code	B
Drip Cover	No Drip Cover
Duty Rating	CONT
Efficiency @ 100% Load	88.5 %
Electrically Isolated Bearing	Not Electrically Isolated
Feedback Device	NO FEEDBACK
Front Shaft Indicator	None
Heater Indicator	No Heater
High Voltage Full Load Amps	4.5 a
Insulation Class	F
Inverter Code	Inverter Duty
KVA Code	K
Lifting Lugs	Standard Lifting Lugs
Locked Bearing Indicator	No Locked Bearing
Motor Lead Quantity/Wire Size	9 @ 14 AWG
Motor Lead Termination	Flying Leads
Motor Standards	NEMA
Motor Type	3734M
Mounting Arrangement	F1
Number of Poles	6
Overall Length	16.32 IN
Power Factor	70
Product Family	General Purpose
Pulley End Bearing Type	Ball
Pulley Face Code	Standard
Pulley Shaft Indicator	Standard
Rodent Screen	None
RoHS Status	ROHS COMPLIANT
Service Factor	1.15
Shaft Diameter	1.375 IN
Shaft Ground Indicator	No Shaft Grounding
Shaft Rotation	Reversible

Shaft Slinger Indicator	No Slinger
Speed	1165 rpm 960 rpm
Speed Code	Single Speed
Starting Method	Direct on line
Thermal Device - Bearing	None
Thermal Device - Winding	None
Vibration Sensor Indicator	No Vibration Sensor
Winding Thermal 1	None
Winding Thermal 2	None

Nameplate

NP4304L									
CAT.NO.	GNEM3305T								
SPEC.	37F614R333G2								
HP	3HP//2.2KW				PH	3			
VOLTS	208-230/460//190/380								
AMPS	9.4-9/4.5//9.4/4.7								
R.P.M. (1/MIN)	1165//960				WT.	54KG	KG		
FRAME	213T	HZ	60//50		I.P.	22			
SER.F.	1.15	CODE	K	DES.	B	CLASS	F		
NOM.EFF.	88.5//84.4		% (100%)						
P.F.	70	IC01, 10:1 VT							
RATING	40C AMB-S1 CONT			CC	010A				
DE	6307	ODE	6206						
ENCL	OPSB	SN							
	SFA 9.4-10/5//10.6/5.3								
	IE3-50HZ-88.5(75%),88.6(50%)								
	IE3-60HZ-89.4(75%),88.4(50%)								

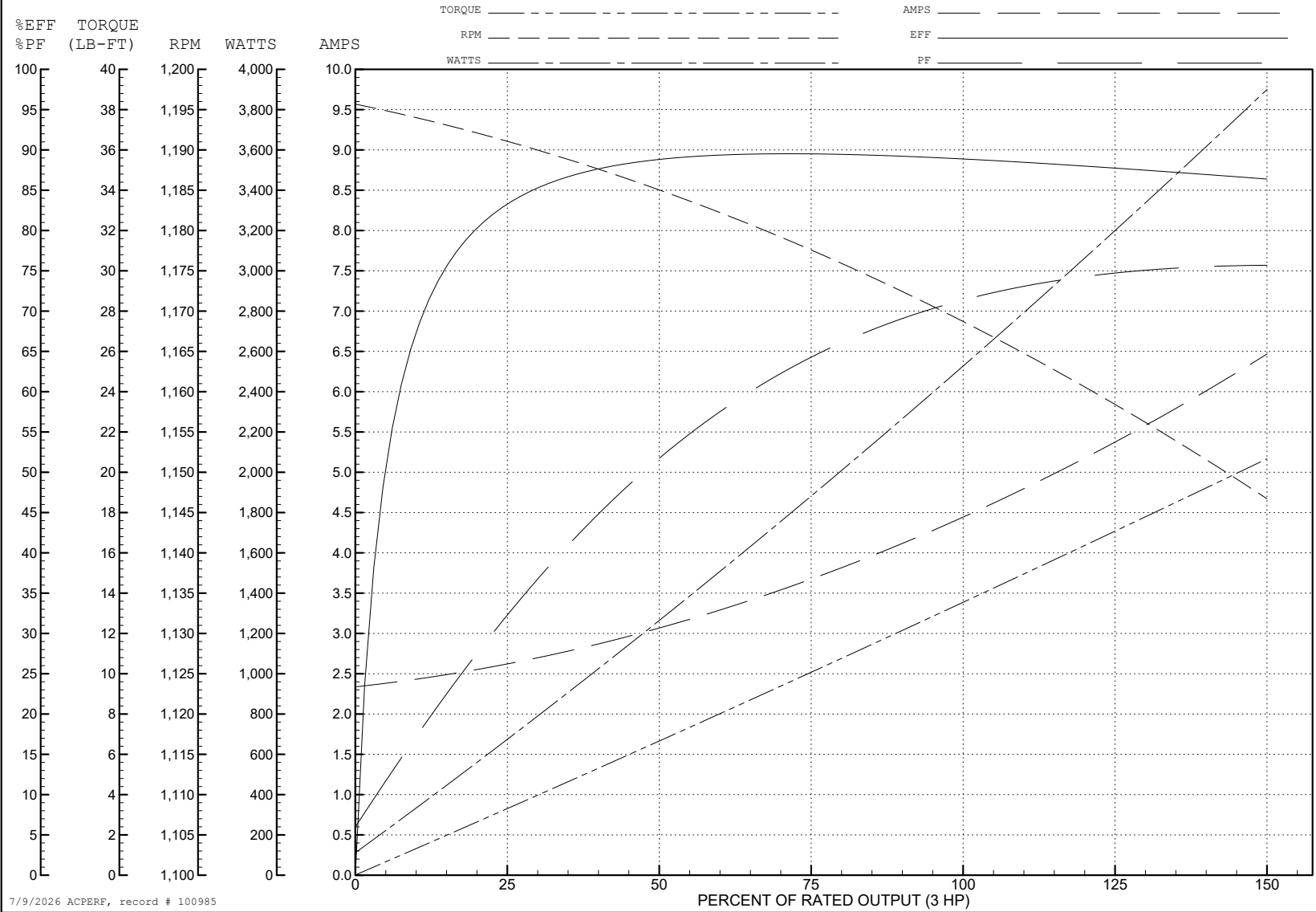
ABB Motors and Mechanical Inc.

WINDING # 37WGR333

3 HP 3 PH 60 HZ 1168 RPM 460 V 3734M

Typical performance - not guaranteed values.

TORQUES (LB-FT): PO=46.48 PU=21.64 LR=35.84 LRA=31.11



7/9/2026 ACPERF, record # 100985

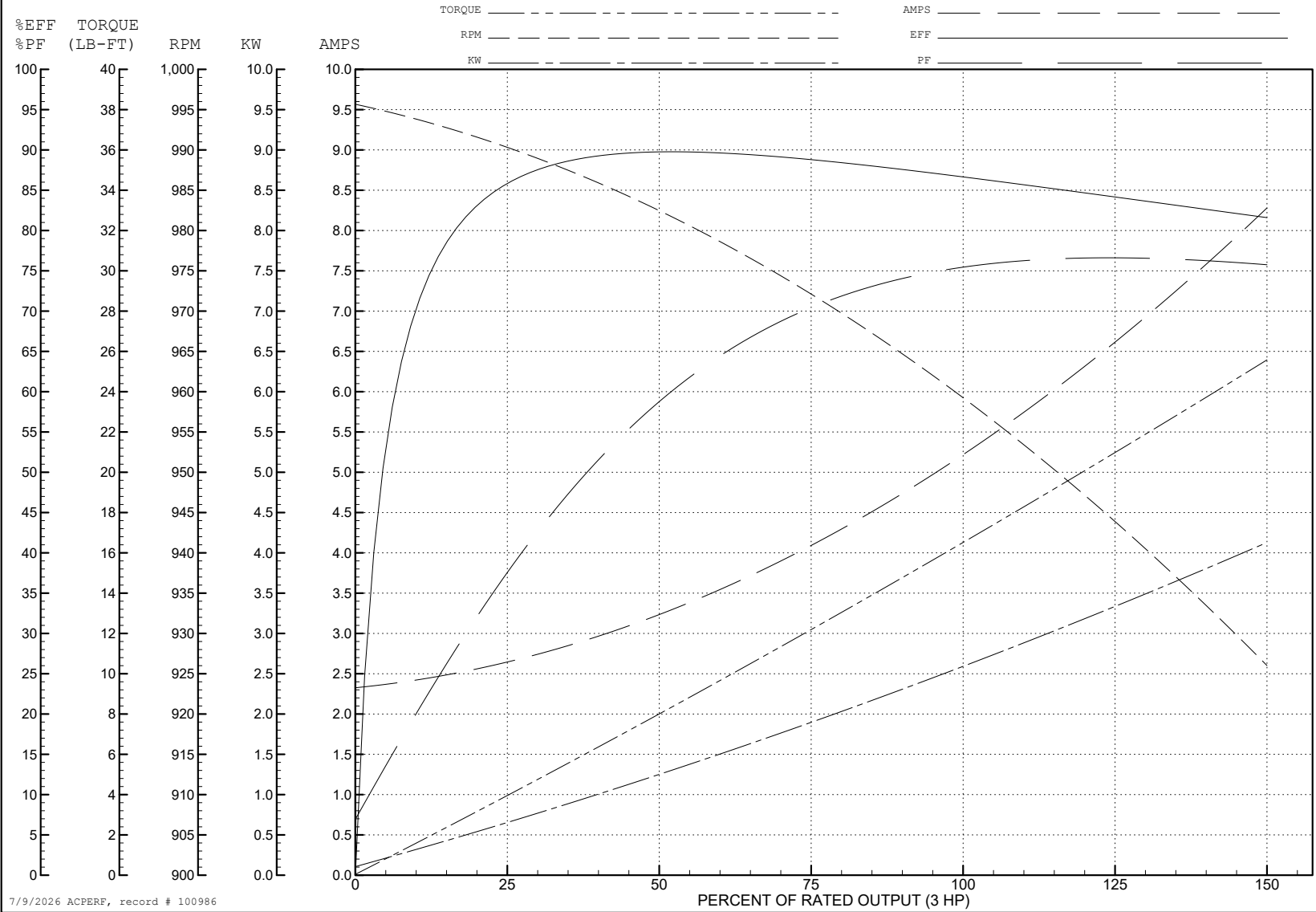
ABB Motors and Mechanical Inc.

WINDING # 37WGR333

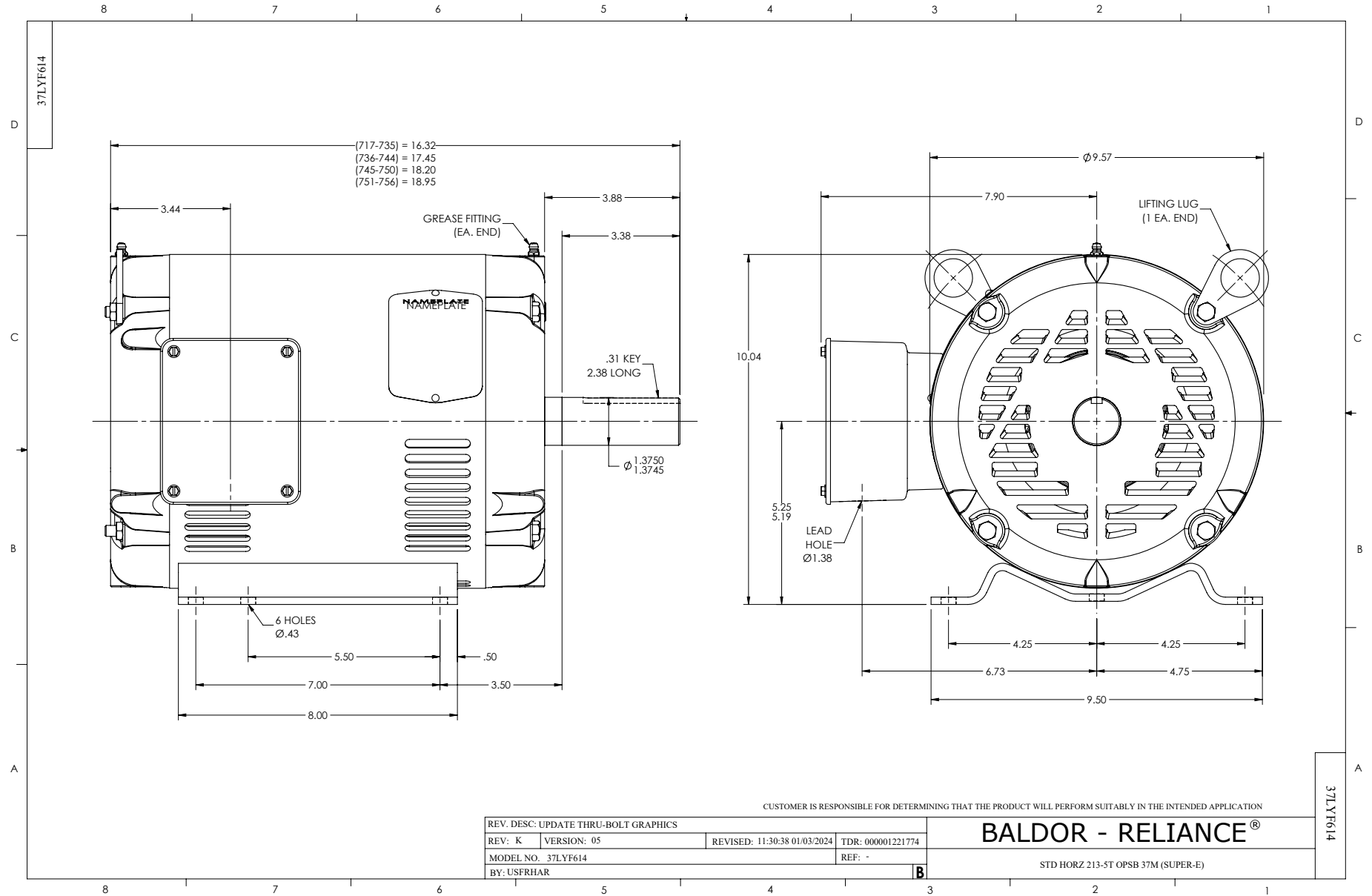
3 HP 3 PH 50 HZ 959 RPM 380 V 3734M

Typical performance - not guaranteed values.

TORQUES (LB-FT): PO=44.6 PU=23.8 LR=39.4 LRA=30.4



7/9/2026 ACPERF, record # 100986



CD0005



LOW VOLTAGE
(2Y)



LINE

HIGH VOLTAGE
(1Y)



LINE

NOTES:

1. INTERCHANGE ANY TWO LINE LEADS TO REVERSE ROTATION.
2. OPTIONAL THERMOSTATS ARE PROVIDED WHEN SPECIFIED.
3. ACTUAL NUMBER OF INTERNAL PARALLEL CIRCUITS MAY BE A MULTIPLE OF THOSE SHOWN ABOVE.
4. LEAD COLORS ARE OPTIONAL. LEADS MUST ALWAYS BE NUMBERED AS SHOWN.

CD0005

REV. DESC: REVISE TO SHOW OPTIONAL COLORS			
REV. LTR: E	BY: JLP	REVISED: 01/19/99 10:15	TDR: 0171435
S00000		FILE: AAA00005140	MDL: -
		MTL: -	

BALDOR ELECTRIC Co.

3PH, DV, 9 LEADS