

**BALDOR • RELIANCE**

---

# Customer information packet

## GNEM3211T-G

3HP, 1760//1460RPM, 3PH, 60//50HZ, 182T, 3636

Class - None

Division - Not Applicable

## Specifications

Enclosure	OPSB
Frame	182T
Frame Material	Steel
Frequency	50.00 Hz 60.00 Hz
Haz Area Class and Group	None
Haz Area Division	Not Applicable
Motor Letter Type	Three Phase
Output @ Frequency	3.000 HP @ 50 HZ 3.000 HP @ 60 HZ
Phase	3
Synchronous Speed @ Frequency	1800 RPM @ 60 HZ
Voltage @ Frequency	460.0 V @ 60 HZ 380.0 V @ 50 HZ 230.0 V @ 60 HZ 208.0 V @ 60 HZ 190.0 V @ 50 HZ
Agency Approvals	CE CSA UR
Ambient Temperature	40 °C
Auxillary Box	No Auxillary Box
Auxillary Box Lead Termination	None
Base Indicator	Rigid
Bearing Grease Type	Polyrex EM (-20F +300F)
Blower	None
Current @ Voltage	9.000 A @ 208.0 V 8.800 A @ 230.0 V 5.100 A @ 380.0 V 4.400 A @ 460.0 V 10.200 A @ 190.0 V
Design Code	A
Drip Cover	No Drip Cover

## Part detail

Revision	M
Type	AC
Mech. spec.	36M526
Base	
Status	PRD/A
Elec. spec.	36WGN115
Layout	36LYM526
Eff. date	05-10-2024
CD Diagram	CD0005
Poles	04
Leads	9#16
Proprietary	False
Created date	02-26-2017

Duty Rating	CONT
Efficiency @ 100% Load	90.2 %
Electrically Isolated Bearing	Not Electrically Isolated
Feedback Device	NO FEEDBACK
Front Face Code	Standard
Front Shaft Indicator	None
Heater Indicator	No Heater
High Voltage Full Load Amps	4.4 a
Insulation Class	H
Inverter Code	Inverter Ready
KVA Code	K
Lifting Lugs	No Lifting Lugs
Locked Bearing Indicator	Locked Bearing
Motor Lead Exit	Ko Box
Motor Lead Quantity/Wire Size	9 @ 16 AWG
Motor Lead Termination	Flying Leads
Motor Standards	NEMA
Motor Type	3636M
Mounting Arrangement	F1
Number of Poles	4
Overall Length	16.50 IN
Power Factor	74
Product Family	General Purpose
Pulley End Bearing Type	Ball
Pulley Face Code	Standard
Pulley Shaft Indicator	Standard
Rodent Screen	None
RoHS Status	ROHS COMPLIANT
Service Factor	1.15
Shaft Diameter	1.125 IN
Shaft Extension Location	Pulley End
Shaft Ground Indicator	Shaft Grounding
Shaft Rotation	Reversible
Shaft Slinger Indicator	No Slinger

<b>Speed</b>	1460 rpm 1760 rpm
<b>Speed Code</b>	Single Speed
<b>Starting Method</b>	Direct on line
<b>Thermal Device - Bearing</b>	None
<b>Thermal Device - Winding</b>	None
<b>Vibration Sensor Indicator</b>	No Vibration Sensor
<b>Winding Thermal 1</b>	None
<b>Winding Thermal 2</b>	None

**Nameplate**

<b>NP4304L</b>									
<b>CAT.NO.</b>	GNEM3211T-G								
<b>SPEC.</b>	36M526N115G1								
<b>HP</b>	3/2.2KW				<b>PH</b>	3			
<b>VOLTS</b>	208-230/460//190/380								
<b>AMPS</b>	9-8.8/4.4//10.2/5.1								
<b>R.P.M. (1/MIN)</b>	1760//1460				<b>WT.</b>	40KG		<b>KG</b>	
<b>FRAME</b>	182T		<b>HZ</b>	60//50		<b>I.P.</b>	22		
<b>SER.F.</b>	1.15	<b>CODE</b>	K	<b>DES.</b>	A	<b>CLASS</b>	H		
<b>NOM.EFF.</b>	90.2//87.6		<b>% (100%)</b>						
<b>P.F.</b>	74	IC01, 10:1 VT							
<b>RATING</b>	40C AMB-S1 CONT				<b>CC</b>	010A			
<b>DE</b>	6206		<b>ODE</b>	6205					
<b>ENCL</b>	OPSB	SN							
IE3-50HZ-89.8(75%),88.5(50%)									
IE3-60HZ 89.8(75%),88.0(50%)									

**AC Induction Motor Performance Data**

Record # 62760

Typical performance - not guaranteed values

Winding: 36WGN116-R004		Type: 3644M	Enclosure: OPSB		
<b>Nameplate Data</b>			<b>460 V, 60 Hz: High Voltage Connection</b>		
Rated Output (HP)		5	Full Load Torque	15.02 LB-FT	
Volts	208-230/460//190/380		Start Configuration	direct on line	
Full Load Amps	14.2/13.6/6.8//15.8/7.9		Breakdown Torque	51.72 LB-FT	
R.P.M.		1750//1450	Pull-up Torque	29.43 LB-FT	
Hz	60//50	Phase	3	Locked-rotor Torque	34.74 LB-FT
NEMA Design Code	A	KVA Code	K	Starting Current	51.23 A
Service Factor (S.F.)			1.15	No-load Current	3.38 A
NEMA Nom. Eff.	90.2	Power Factor	77	Line-line Res. @ 25°C	2.13 Ω
Rating - Duty			40C AMB-CONT	Temp. Rise @ Rated Load	41°C
S.F. Amps				Temp. Rise @ S.F. Load	50°C
				Locked-rotor Power Factor	39.6
				Rotor inertia	0.41 LB-FT <sup>2</sup>

**Load Characteristics 460 V, 60 Hz, 5 HP**

% of Rated Load	25	50	75	100	125	150	S.F.
Power Factor	38	59	71	77	81	83	79
Efficiency	83.8	89	90	90.2	89.1	87.4	89.5
Speed	1790	1781	1771	1759	1747	1732	1752
Line amperes	3.72	4.47	5.51	6.78	8.14	9.67	7.6

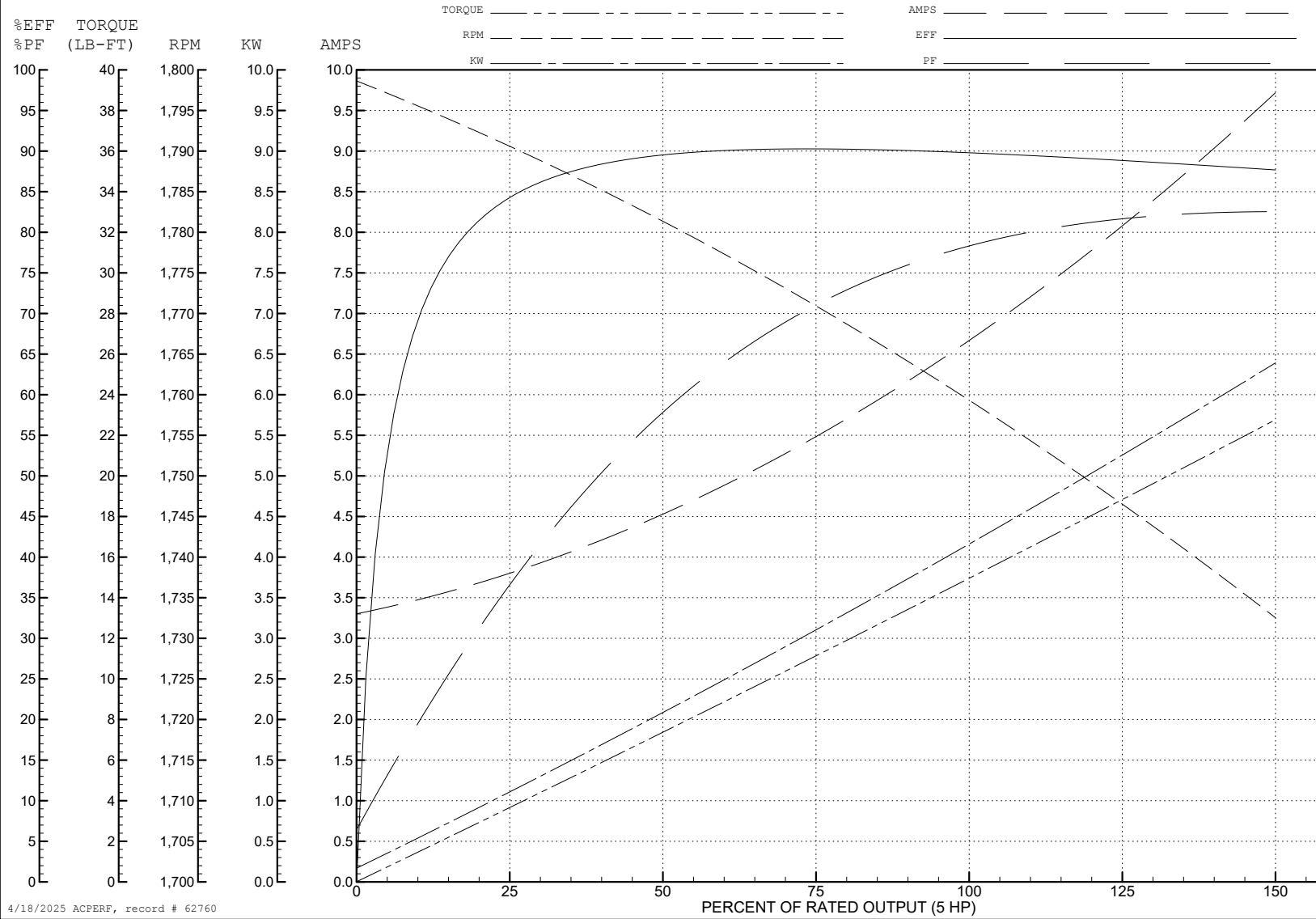
ABB Motors and Mechanical Inc.

WINDING # 36WGN116

5 HP 3 PH 60 HZ 1759 RPM 460 V 3644M

Typical performance - not guaranteed values.

TORQUES (LB-FT): PO=51.72 PU=29.43 LR=34.74 LRA=51.23



4/18/2025 ACPERF, record # 62760

**AC Induction Motor Performance Data**

Record # 62761

Typical performance - not guaranteed values

Winding: 36WGN116-R004		Type: 3644M		Enclosure: OPSB	
<b>Nameplate Data</b>			<b>380 V, 50 Hz: High Voltage Connection</b>		
Rated Output (HP)		5	Full Load Torque		18.2 LB-FT
Volts		208-230/460//190/380	Start Configuration		direct on line
Full Load Amps		14.2/13.6/6.8//15.8/7.9	Breakdown Torque		49.05 LB-FT
R.P.M.		1750//1450	Pull-up Torque		30.01 LB-FT
Hz	60//50	Phase	3	Locked-rotor Torque	35.43 LB-FT
NEMA Design Code	A	KVA Code	K	Starting Current	49.46 A
Service Factor (S.F.)			1.15	No-load Current	3.31 A
NEMA Nom. Eff.	90.2	Power Factor	77	Line-line Res. @ 25°C	2.13 Ω
Rating - Duty			40C AMB-CONT	Temp. Rise @ Rated Load	53°C
S.F. Amps				Temp. Rise @ S.F. Load	67°C
				Locked-rotor Power Factor	44
				Rotor inertia	0.41 LB-FT <sup>2</sup>

**Load Characteristics 380 V, 50 Hz, 5 HP**

% of Rated Load	25	50	75	100	125	150	S.F.
Power Factor	45	66	77	81	84	85	83
Efficiency	85.8	89.6	89.6	88.9	87	84.5	87.8
Speed	1489	1478	1465	1451	1436	1417	1442
Line amperes	3.76	4.78	6.2	7.89	9.76	11.88	9.01



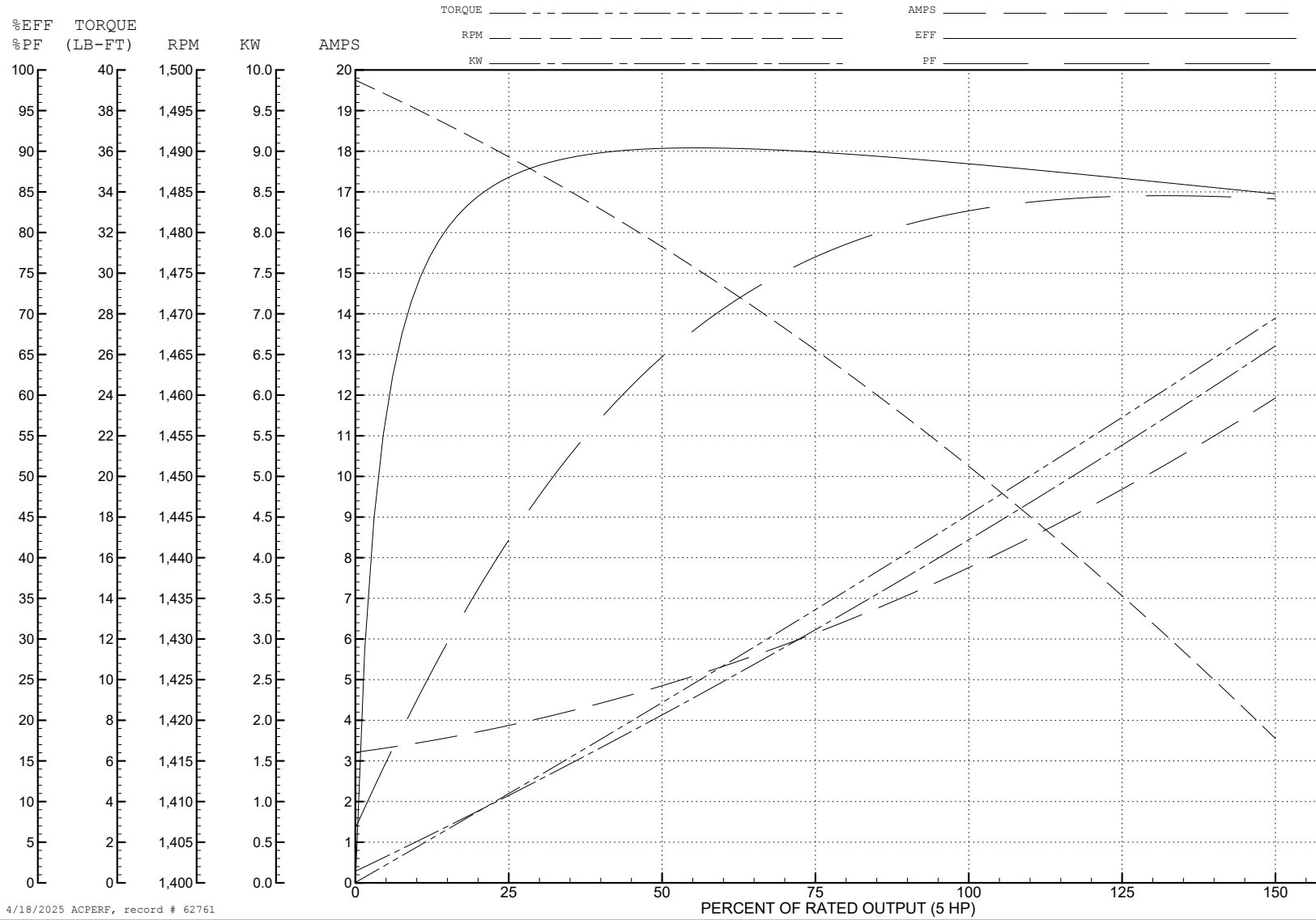
ABB Motors and Mechanical Inc.

WINDING # 36WGN116

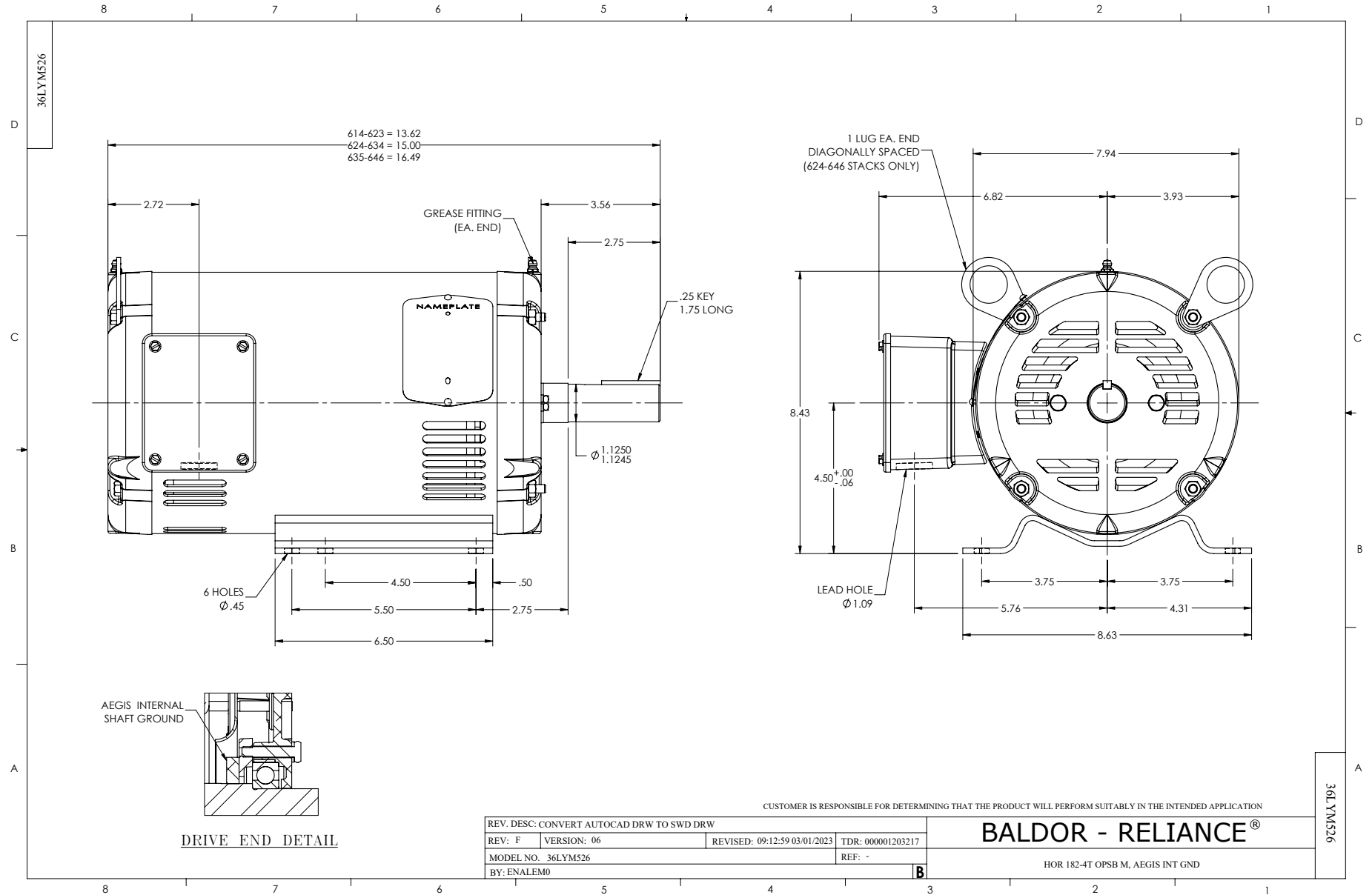
Typical performance - not guaranteed values.

5 HP 3 PH 50 HZ 1451 RPM 380 V 3644M

TORQUES (LB-FT): PO=49.05 PU=30.01 LR=35.43 LRA=49.46



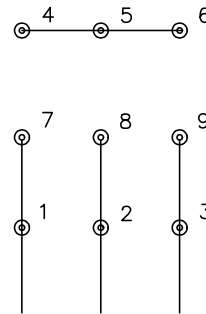
4/18/2025 ACPERF, record # 62761



CD0005

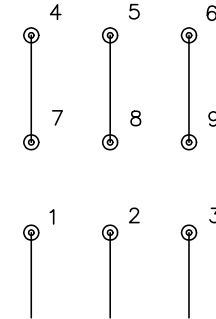


LOW VOLTAGE  
(2Y)



LINE

HIGH VOLTAGE  
(1Y)



LINE

NOTES:

1. INTERCHANGE ANY TWO LINE LEADS TO REVERSE ROTATION.
2. OPTIONAL THERMOSTATS ARE PROVIDED WHEN SPECIFIED.
3. ACTUAL NUMBER OF INTERNAL PARALLEL CIRCUITS MAY BE A MULTIPLE OF THOSE SHOWN ABOVE.
4. LEAD COLORS ARE OPTIONAL. LEADS MUST ALWAYS BE NUMBERED AS SHOWN.

CD0005

REV. DESC: REVISE TO SHOW OPTIONAL COLORS			
REV. LTR: E	BY: JLP	REVISED: 01/19/99 10:15	TDR: 0171435
S00000		FILE: AAA00005140	MDL: -
		MTL: -	

BALDOR ELECTRIC Co.

3PH, DV, 9 LEADS