

# ABB BALDOR RELIANCE III

---

## Customer information packet

### GNEM3157T

2/1.5KWHP, 1765//1460RPM, 3PH, 60//50HZ, 145

Class - None

Division - Not Applicable

**Specifications**

<b>Enclosure</b>	OPSB
<b>Frame</b>	145T
<b>Frame Material</b>	Steel
<b>Frequency</b>	50.00 Hz 60.00 Hz
<b>Haz Area Class and Group</b>	None
<b>Haz Area Division</b>	Not Applicable
<b>Motor Letter Type</b>	Three Phase
<b>Output @ Frequency</b>	2.000 HP @ 60 HZ 2.000 HP @ 50 HZ
<b>Phase</b>	3
<b>Synchronous Speed @ Frequency</b>	1800 RPM @ 60 HZ
<b>Voltage @ Frequency</b>	190.0 V @ 50 HZ 208.0 V @ 60 HZ 230.0 V @ 60 HZ 380.0 V @ 50 HZ 460.0 V @ 60 HZ
<b>Agency Approvals</b>	CE WEEE UKCA CURUSEEV IE3 NEMA PREMIUM
<b>Ambient Temperature</b>	40 °C
<b>Auxiliary Box</b>	NO AUXILLARY BOX
<b>Auxiliary Box Lead Termination</b>	None
<b>Base Indicator</b>	Rigid
<b>Bearing Grease Type</b>	Polyrex EM (-20F +300F)
<b>Blower</b>	None
<b>Current @ Voltage</b>	6.400 A @ 190.0 V 5.700 A @ 208.0 V 5.600 A @ 230.0 V

**Part Detail**

<b>Revision</b>	B
<b>Type</b>	AC
<b>Mech. spec.</b>	35L405
<b>Base</b>	
<b>Status</b>	PRD/A
<b>Elec. spec.</b>	35WGZ806
<b>Layout</b>	35LYL405
<b>Eff. date</b>	05-14-2024
<b>CD Diagram</b>	CD0005
<b>Poles</b>	04
<b>Leads</b>	9#18
<b>Proprietary</b>	False
<b>Created date</b>	08-28-2023

3.200 A @ 380.0 V

2.800 A @ 460.0 V

<b>Design Code</b>	B
<b>Drip Cover</b>	No Drip Cover
<b>Duty Rating</b>	CONT
<b>Efficiency @ 100% Load</b>	86.5 %
<b>Electrically Isolated Bearing</b>	Not Electrically Isolated
<b>Feedback Device</b>	NO FEEDBACK
<b>Front Shaft Indicator</b>	None
<b>Heater Indicator</b>	No Heater
<b>High Voltage Full Load Amps</b>	2.8 a
<b>Insulation Class</b>	F
<b>Inverter Code</b>	Inverter Duty
<b>KVA Code</b>	L
<b>Lifting Lugs</b>	No Lifting Lugs
<b>Locked Bearing Indicator</b>	No Locked Bearing
<b>Motor Lead Quantity/Wire Size</b>	9 @ 18 AWG
<b>Motor Lead Termination</b>	Flying Leads
<b>Motor Standards</b>	NEMA
<b>Motor Type</b>	3530M
<b>Mounting Arrangement</b>	F1
<b>Number of Poles</b>	4
<b>Overall Length</b>	13.00 IN
<b>Power Factor</b>	77
<b>Product Family</b>	General Purpose
<b>Pulley End Bearing Type</b>	Ball
<b>Pulley Face Code</b>	Standard
<b>Pulley Shaft Indicator</b>	Standard
<b>Rodent Screen</b>	None
<b>RoHS Status</b>	ROHS COMPLIANT
<b>Service Factor</b>	1.15
<b>Shaft Diameter</b>	0.875 IN
<b>Shaft Ground Indicator</b>	No Shaft Grounding
<b>Shaft Rotation</b>	Reversible

<b>Shaft Slinger Indicator</b>	No Slinger
<b>Speed</b>	1460 rpm 1765 rpm
<b>Speed Code</b>	Single Speed
<b>Starting Method</b>	Direct on line
<b>Thermal Device - Bearing</b>	None
<b>Thermal Device - Winding</b>	None
<b>Vibration Sensor Indicator</b>	No Vibration Sensor
<b>Winding Thermal 1</b>	None
<b>Winding Thermal 2</b>	None

**Nameplate**

<b>NP4304L</b>										
<b>CAT.NO.</b>	GNEM3157T									
<b>SPEC.</b>	35L405Z806G1									
<b>HP</b>	2/1.5KW				<b>PH</b>	3				
<b>VOLTS</b>	208-230/460//190/380									
<b>AMPS</b>	5.7-5.6/2.8//6.4/3.2									
<b>R.P.M. (1/MIN)</b>	1765//1460				<b>WT.</b>	22KG	<b>KG</b>			
<b>FRAME</b>	145T	<b>HZ</b>	60//50		<b>I.P.</b>	22				
<b>SER.F.</b>	1.15	<b>CODE</b>	L	<b>DES.</b>	B	<b>CLASS</b>	F			
<b>NOM.EFF.</b>	86.5//85.3		<b>% (100%)</b>							
<b>P.F.</b>	77	IC01, 10:1 VT								
<b>RATING</b>	40C AMB-S1 CONT				<b>CC</b>	010A				
<b>DE</b>	6205	<b>ODE</b>	6203							
<b>ENCL</b>	OPSB	<b>SN</b>								
	SFA 6.5-6.3/3.15//7.4/3.7									
	IE3-50HZ-86.6(75%),86.0(50%)									
	IE3-60HZ-86.9(75%),85.1(50%)									

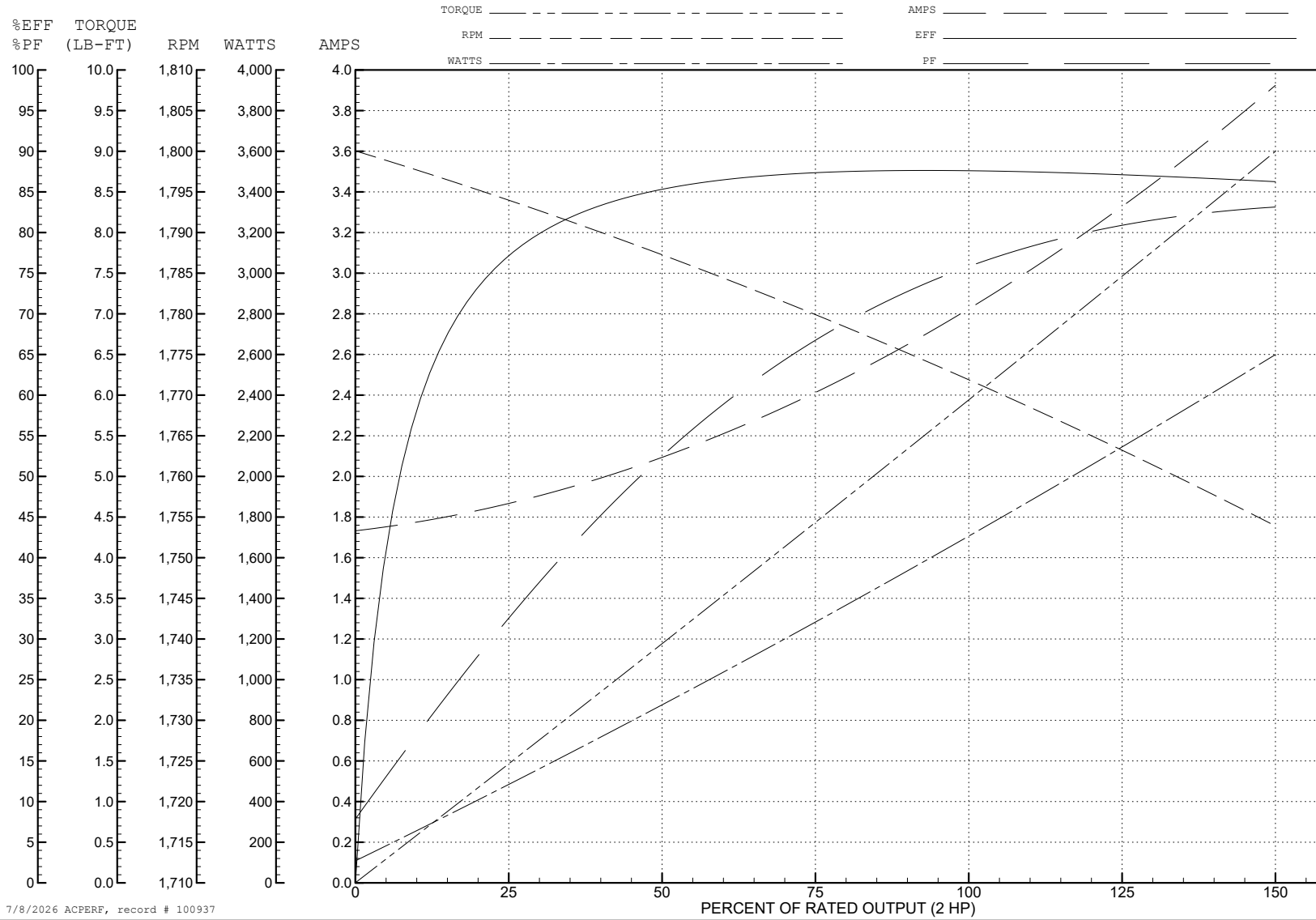
ABB Motors and Mechanical Inc.

WINDING # 35WGZ806

Typical performance - not guaranteed values.

2 HP 3 PH 60 HZ 1772 RPM 460 V 3530M

TORQUES (LB-FT): PO=24.53 PU=14.6 LR=17.66 LRA=25.08



7/8/2026 ACPERF, record # 100937

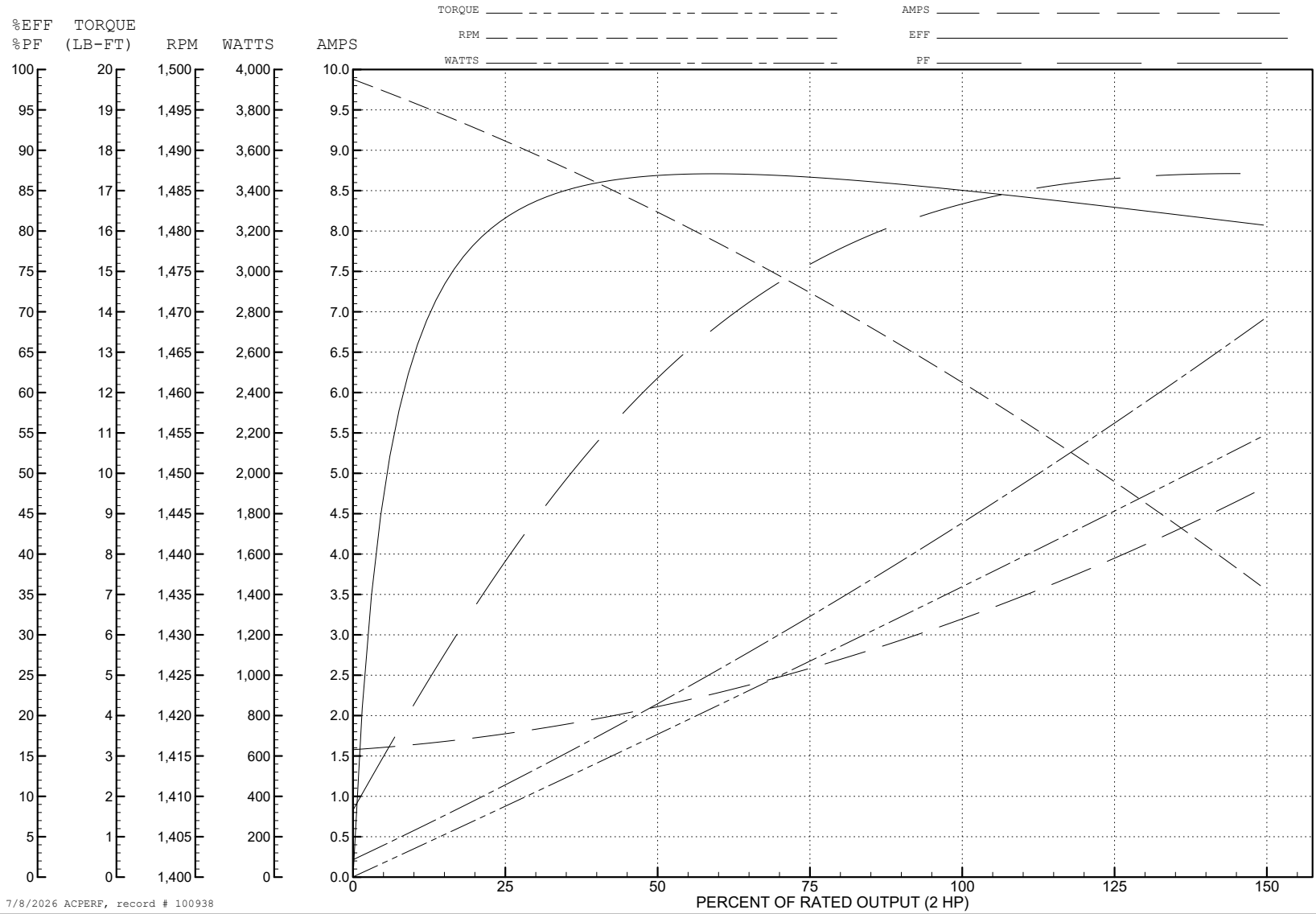
ABB Motors and Mechanical Inc.

WINDING # 35WGZ806

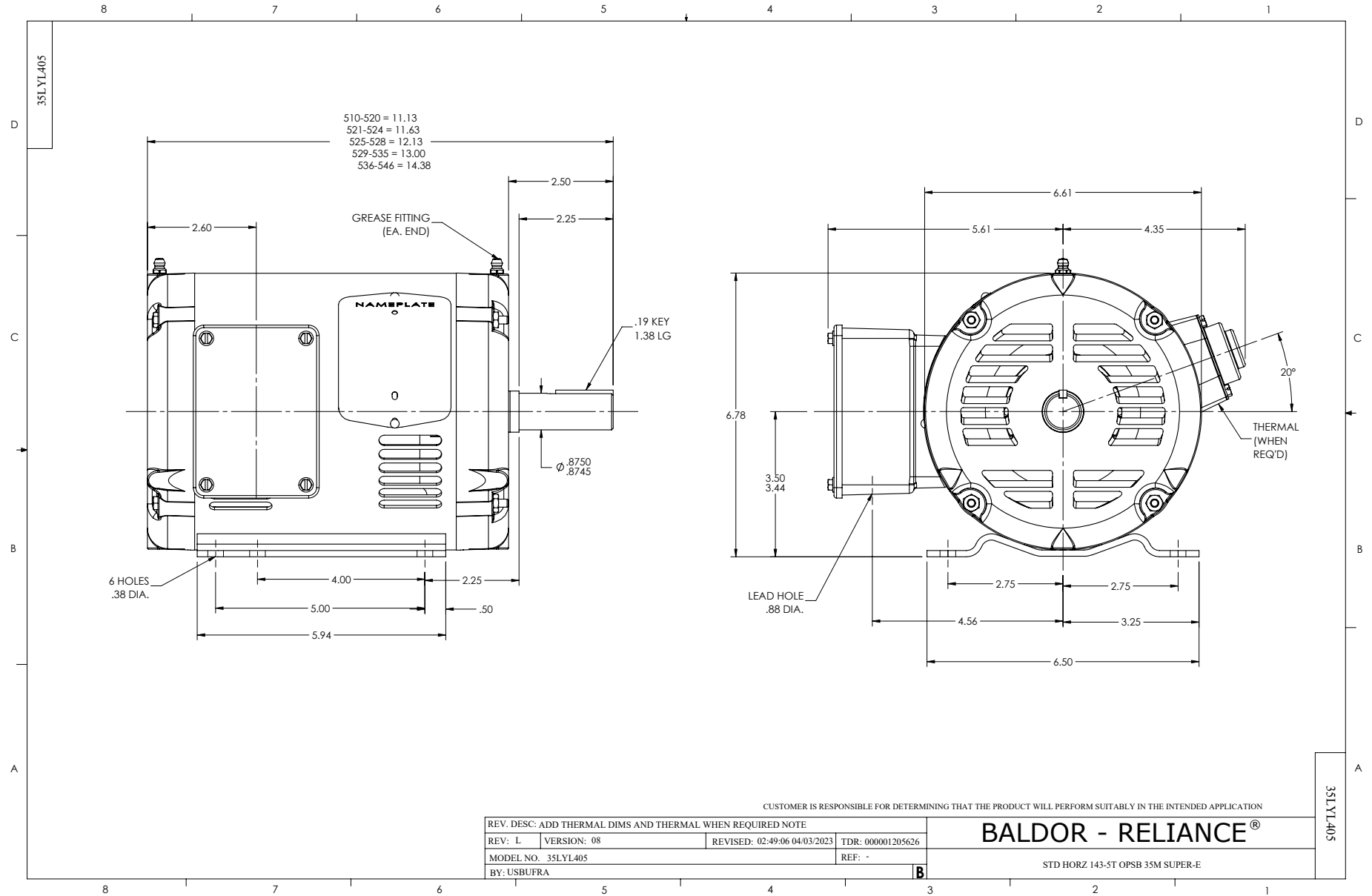
Typical performance - not guaranteed values.

2 HP 3 PH 50 HZ 1461 RPM 380 V 3530M

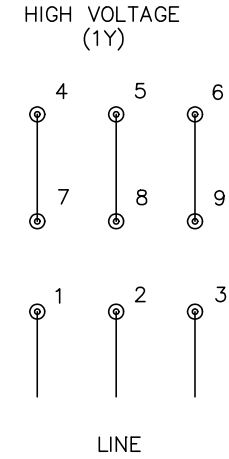
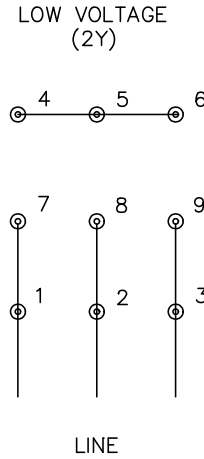
TORQUES (LB-FT): PO=22.3 PU=14 LR=16.9 LRA=23.4



7/8/2026 ACPERF, record # 100938



CD0005



- NOTES:
1. INTERCHANGE ANY TWO LINE LEADS TO REVERSE ROTATION.
  2. OPTIONAL THERMOSTATS ARE PROVIDED WHEN SPECIFIED.
  3. ACTUAL NUMBER OF INTERNAL PARALLEL CIRCUITS MAY BE A MULTIPLE OF THOSE SHOWN ABOVE.
  4. LEAD COLORS ARE OPTIONAL. LEADS MUST ALWAYS BE NUMBERED AS SHOWN.

CD0005

REV. DESC: REVISE TO SHOW OPTIONAL COLORS			
REV. LTR: E	BY: JLP	REVISED: 01/19/99 10:15	TDR: 0171435
S00000		FILE: AAA00005140	MDL: -
		MTL: -	

**BALDOR ELECTRIC Co.**

3PH, DV, 9 LEADS