

**BALDOR • RELIANCE**

---

# Customer information packet

## GNEM3156T-G

1HP//.75KW, 1170//965RPM, 3PH, 60//50HZ, 145

Class - None

Division - Not Applicable

## Specifications

Enclosure	OPSB
Frame	145T
Frame Material	Steel
Frequency	50.00 Hz 60.00 Hz
Haz Area Class and Group	None
Haz Area Division	Not Applicable
Motor Letter Type	Three Phase
Output @ Frequency	1.000 HP @ 60 HZ .750 KW @ 50 HZ
Phase	3
Synchronous Speed @ Frequency	1200 RPM @ 60 HZ
Voltage @ Frequency	190.0 V @ 50 HZ 208.0 V @ 60 HZ 230.0 V @ 60 HZ 380.0 V @ 50 HZ 460.0 V @ 60 HZ
Agency Approvals	CE WEEE UKCA CURUSEEV IE3 NEMA PREMIUM
Ambient Temperature	40 °C
Auxillary Box	No Auxillary Box
Auxillary Box Lead Termination	None
Base Indicator	Rigid
Bearing Grease Type	Polyrex EM (-20F +300F)
Blower	None
Current @ Voltage	4.000 A @ 190.0 V 3.600 A @ 208.0 V 3.560 A @ 230.0 V 2.000 A @ 380.0 V

## Part detail

Revision	C
Type	AC
Mech. spec.	35Z069
Base	
Status	PRD/A
Elec. spec.	35WGG330
Layout	35LYZ069
Eff. date	09-10-2024
CD Diagram	CD0005
Poles	06
Leads	9#18
Proprietary	False
Created date	09-11-2023

	1.780 A @ 460.0 V
Design Code	B
Drip Cover	No Drip Cover
Duty Rating	CONT
Efficiency @ 100% Load	82.5 %
Electrically Isolated Bearing	Not Electrically Isolated
Feedback Device	NO FEEDBACK
Front Shaft Indicator	None
Heater Indicator	No Heater
High Voltage Full Load Amps	1.8 a
Insulation Class	F
Inverter Code	Inverter Duty
KVA Code	K
Lifting Lugs	No Lifting Lugs
Locked Bearing Indicator	Locked Bearing
Motor Lead Quantity/Wire Size	9 @ 18 AWG
Motor Lead Termination	Flying Leads
Motor Standards	NEMA
Motor Type	3526M
Mounting Arrangement	F1
Number of Poles	6
Overall Length	12.13 IN
Power Factor	64
Product Family	General Purpose
Pulley End Bearing Type	Ball
Pulley Face Code	Standard
Pulley Shaft Indicator	Standard
Rodent Screen	None
RoHS Status	ROHS COMPLIANT
Service Factor	1.15
Shaft Diameter	0.875 IN
Shaft Ground Indicator	Shaft Grounding
Shaft Rotation	Reversible
Shaft Slinger Indicator	No Slinger

<b>Speed</b>	1170 rpm
	965 rpm
<b>Speed Code</b>	Single Speed
<b>Starting Method</b>	Direct on line
<b>Thermal Device - Bearing</b>	None
<b>Thermal Device - Winding</b>	None
<b>Vibration Sensor Indicator</b>	No Vibration Sensor
<b>Winding Thermal 1</b>	None
<b>Winding Thermal 2</b>	None

**Nameplate**

<b>NP4304L</b>									
<b>CAT.NO.</b>	GNEM3156T-G								
<b>SPEC.</b>	35Z069G330G1								
<b>HP</b>	1HP//.75KW				<b>PH</b>	3			
<b>VOLTS</b>	208-230/460//190/380								
<b>AMPS</b>	3.6-3.56/1.78//4/2								
<b>R.P.M. (1/MIN)</b>	1170//965				<b>WT.</b>	18KG	<b>KG</b>		
<b>FRAME</b>	145T	<b>HZ</b>	60//50		<b>I.P.</b>	22			
<b>SER.F.</b>	1.15	<b>CODE</b>	K	<b>DES.</b>	B	<b>CLASS</b>	H		
<b>NOM.EFF.</b>	82.5//78.9		<b>% (100%)</b>						
<b>P.F.</b>	64	IC01, 10:1 VT							
<b>RATING</b>	40C AMB-S1 CONT			<b>CC</b>	010A				
<b>DE</b>	6205		<b>ODE</b>	6203					
<b>ENCL</b>	OPSB	<b>SN</b>							
	SFA 4/2//4.6/2.3								
	IE3-50HZ 81.7(75%),81.0(50%)								
	IE3-60HZ 82.3(75%),80.1(50%)								

**AC Induction Motor Performance Data**

Record # 102723

Typical performance - not guaranteed values

Winding: 35WGG330-R015		Type: 3526M	Enclosure: OPSB			
<b>Nameplate Data</b>			<b>460 V, 60 Hz: High Voltage Connection</b>			
Rated Output (HP)	1HP//.75KW		Full Load Torque	4.47 LB-FT		
Volts	208-230/460//190/380		Start Configuration	direct on line		
Full Load Amps	3.6-3.56/1.78//4/2		Breakdown Torque	13.2 LB-FT		
R.P.M.	1170//965		Pull-up Torque	7.9 LB-FT		
Hz	60//50	Phase	3	Locked-rotor Torque	9.7 LB-FT	
NEMA Design Code	B		KVA Code	K	Starting Current	10.2 A
Service Factor (S.F.)	1.15		No-load Current	1.19 A		
NEMA Nom. Eff.	82.5	Power Factor	64		Line-line Res. @ 25°C	19.9 Ω
Rating - Duty	40C AMB-CONT		Temp. Rise @ Rated Load	48°C		
S.F. Amps	4/2//4.6/2.3		Temp. Rise @ S.F. Load	57°C		
			Locked-rotor Power Factor	50.1		
			Rotor inertia	0.189 lb-ft <sup>2</sup>		

**Load Characteristics 460 V, 60 Hz, 1 HP**

% of Rated Load	25	50	75	100	125	150	S.F.
Power Factor	27	43	55	64	70	73	68
Efficiency	70.2	80.1	82.3	82.5	81.5	79.4	81.9
Speed	1193	1187	1180	1172	1163	1153	1167
Line amperes	1.23	1.36	1.54	1.78	2.06	2.41	1.95

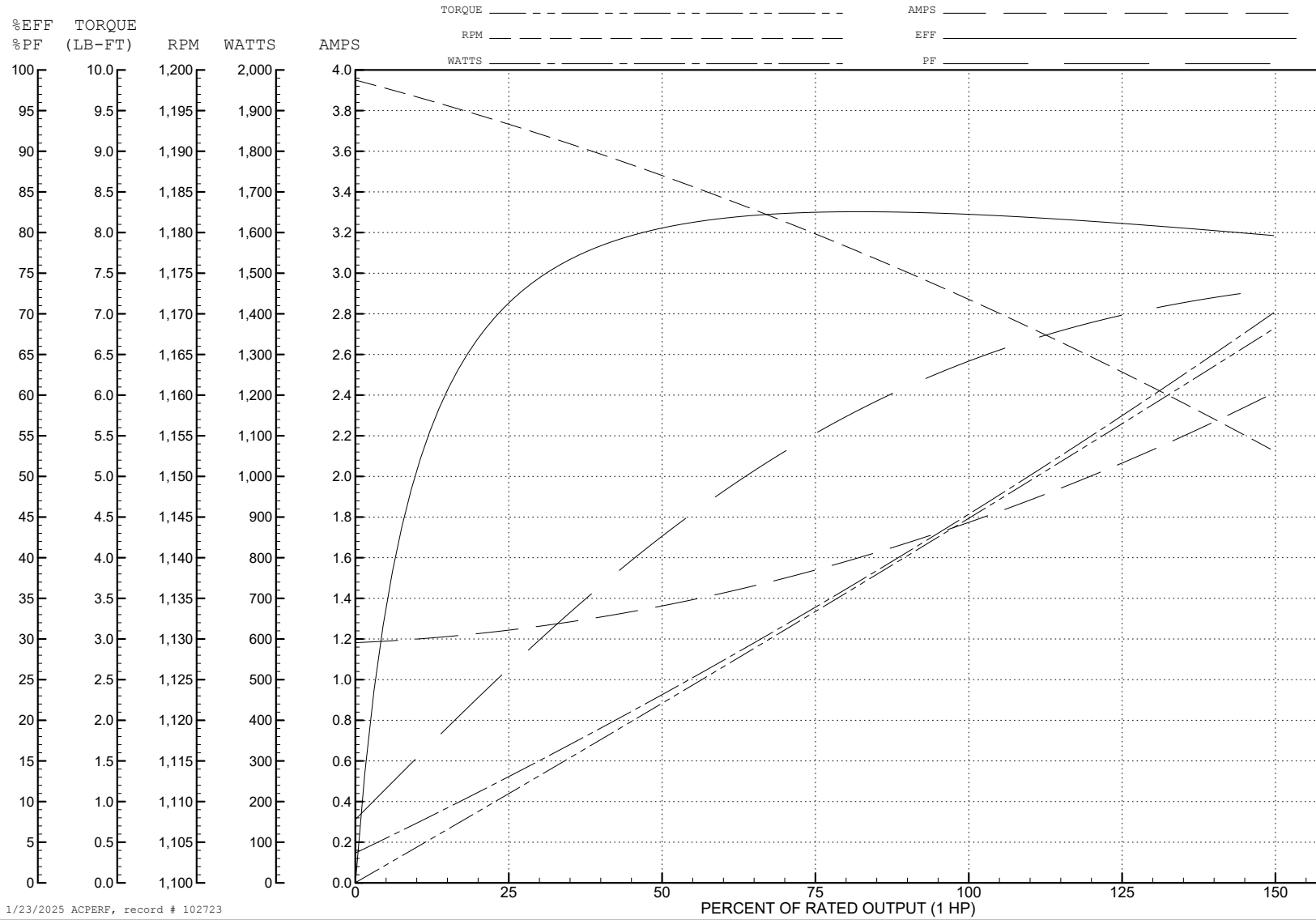
ABB Motors and Mechanical Inc.

WINDING # 35WGG330

Typical performance - not guaranteed values.

1 HP 3 PH 60 HZ 1172 RPM 460 V 3526M

TORQUES (LB-FT): PO=13.2 PU=7.9 LR=9.7 LRA=10.2



1/23/2025 ACPERF, record # 102723

**AC Induction Motor Performance Data**

Record # 102724

Typical performance - not guaranteed values

Winding: 35WGG330-R015		Type: 3526M	Enclosure: OPSB			
<b>Nameplate Data</b>			<b>380 V, 50 Hz: High Voltage Connection</b>			
Rated Output (HP)	1HP//.75KW		Full Load Torque	5.42 LB-FT		
Volts	208-230/460//190/380		Start Configuration	direct on line		
Full Load Amps	3.6-3.56/1.78//4/2		Breakdown Torque	12.2 LB-FT		
R.P.M.	1170//965		Pull-up Torque	7.8 LB-FT		
Hz	60//50	Phase	3	Locked-rotor Torque	9.5 LB-FT	
NEMA Design Code	B		KVA Code	K	Starting Current	9.7 A
Service Factor (S.F.)	1.15		No-load Current	1.17 A		
NEMA Nom. Eff.	82.5	Power Factor	64		Line-line Res. @ 25°C	19.9 Ω
Rating - Duty	40C AMB-CONT		Temp. Rise @ Rated Load	62°C		
S.F. Amps	4/2//4.6/2.3		Temp. Rise @ S.F. Load	78°C		
			Locked-rotor Power Factor	55.4		
			Rotor inertia	0.189 lb-ft <sup>2</sup>		

**Load Characteristics 380 V, 50 Hz, 1 HP**

% of Rated Load	25	50	75	100	125	150	S.F.
Power Factor	31	50	62	70	75	77	73
Efficiency	72.9	81	81.7	80.6	78	74.1	79
Speed	992	985	976	966	954	938	959
Line amperes	1.22	1.4	1.66	2.01	2.43	2.98	2.26



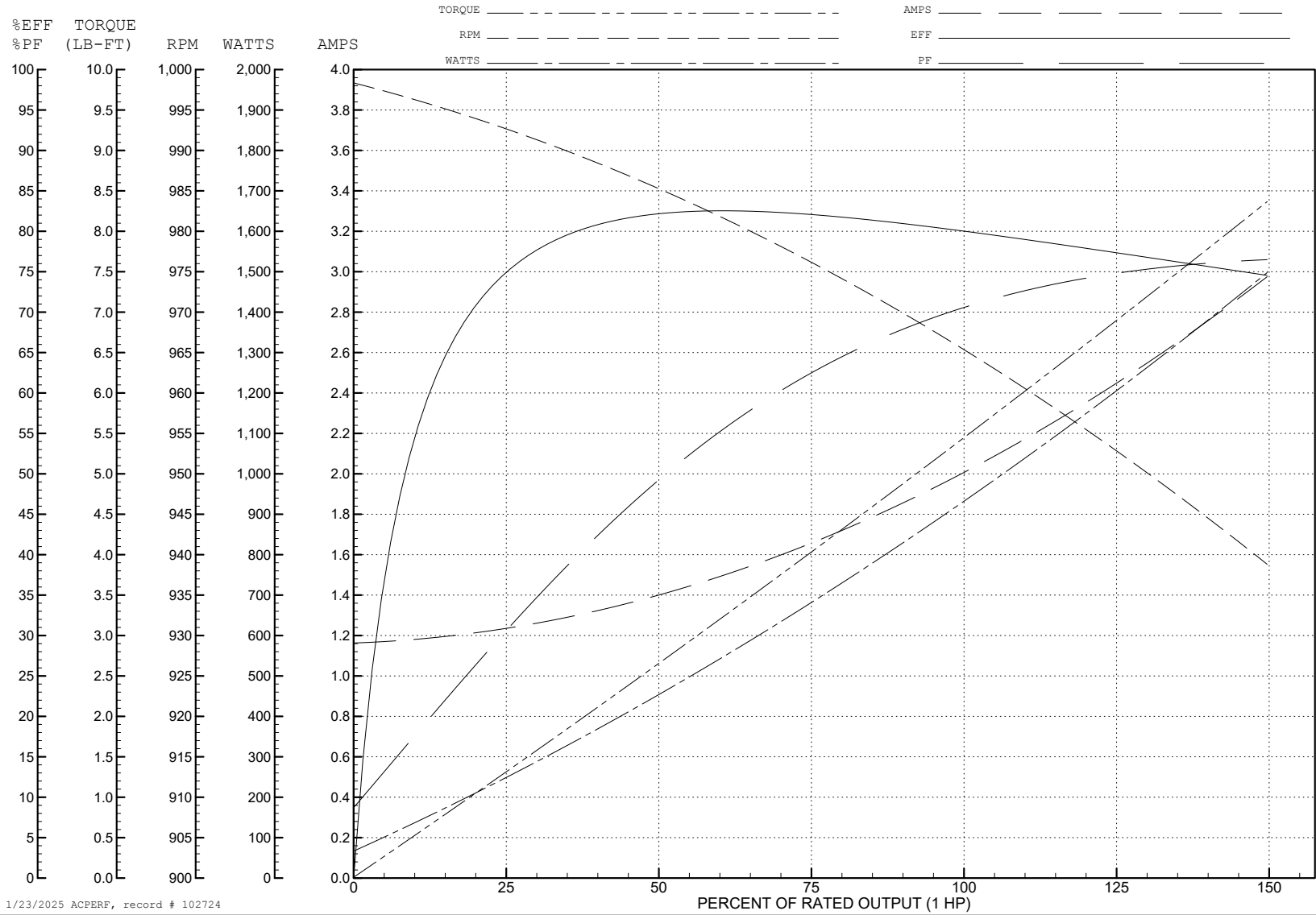
ABB Motors and Mechanical Inc.

WINDING # 35WGG330

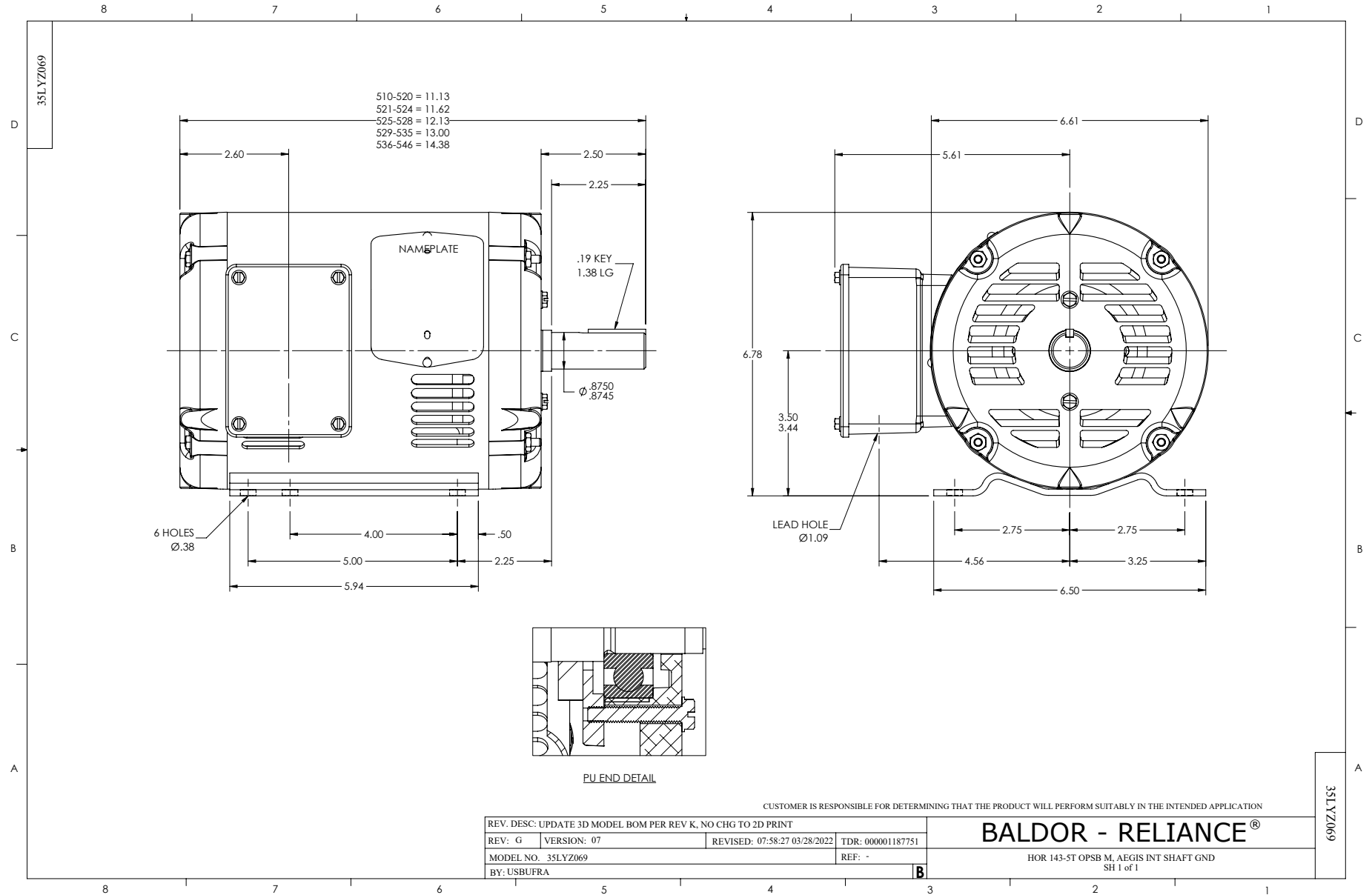
Typical performance - not guaranteed values.

1 HP 3 PH 50 HZ 966 RPM 380 V 3526M

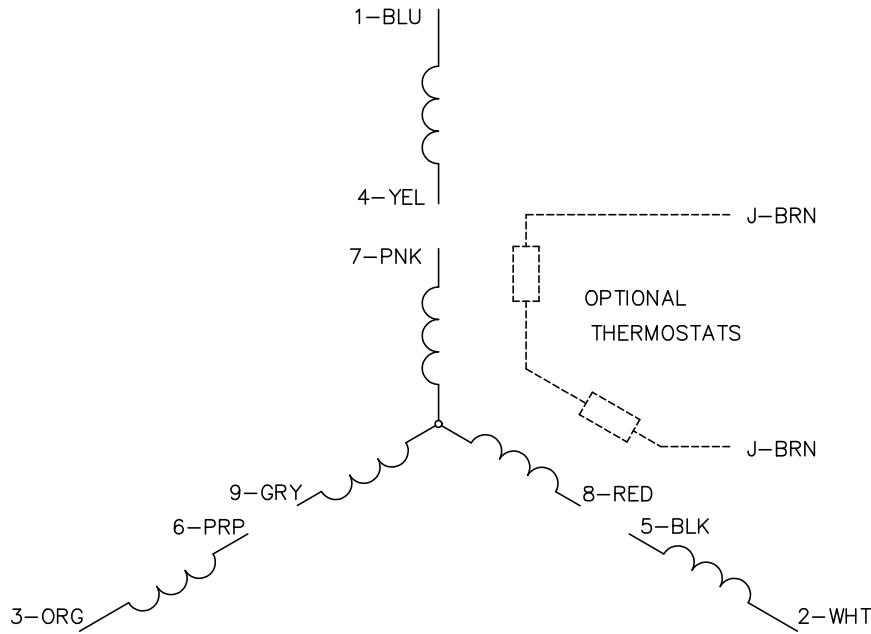
TORQUES (LB-FT): PO=12.2 PU=7.8 LR=9.5 LRA=9.7



1/23/2025 ACPERF, record # 102724



CD0005

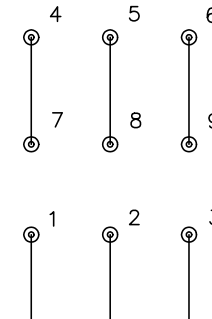


LOW VOLTAGE  
(2Y)



LINE

HIGH VOLTAGE  
(1Y)



LINE

NOTES:

1. INTERCHANGE ANY TWO LINE LEADS TO REVERSE ROTATION.
2. OPTIONAL THERMOSTATS ARE PROVIDED WHEN SPECIFIED.
3. ACTUAL NUMBER OF INTERNAL PARALLEL CIRCUITS MAY BE A MULTIPLE OF THOSE SHOWN ABOVE.
4. LEAD COLORS ARE OPTIONAL. LEADS MUST ALWAYS BE NUMBERED AS SHOWN.

CD0005

REV. DESC: REVISE TO SHOW OPTIONAL COLORS			
REV. LTR: E	BY: JLP	REVISED: 01/19/99 10:15	TDR: 0171435
S00000		FILE: AAA00005140	MDL: -
		MTL: -	

BALDOR ELECTRIC Co.

3PH, DV, 9 LEADS