

ABB BALDOR RELIANCE III

Customer information packet

GNEM3116T

1/.75KWHP, 1770//1470RPM, 3PH, 60//50HZ, 143

Class - None

Division - Not Applicable

Specifications

Enclosure	OPSB
Frame	143T
Frame Material	Steel
Frequency	50.00 Hz 60.00 Hz
Haz Area Class and Group	None
Haz Area Division	Not Applicable
Motor Letter Type	Three Phase
Output @ Frequency	1.000 HP @ 60 HZ 1.000 HP @ 50 HZ
Phase	3
Synchronous Speed @ Frequency	1800 RPM @ 60 HZ
Voltage @ Frequency	190.0 V @ 50 HZ 208.0 V @ 60 HZ 230.0 V @ 60 HZ 380.0 V @ 50 HZ 460.0 V @ 60 HZ
Agency Approvals	CE WEEE UKCA CURUSEEV IE3 NEMA PREMIUM
Ambient Temperature	40 °C
Auxiliary Box	NO AUXILLARY BOX
Auxiliary Box Lead Termination	None
Base Indicator	Rigid
Bearing Grease Type	Polyrex EM (-20F +300F)
Blower	None
Current @ Voltage	3.700 A @ 190.0 V 3.400 A @ 230.0 V 3.300 A @ 208.0 V

Part Detail

Revision	B
Type	AC
Mech. spec.	35L405
Base	
Status	PRD/A
Elec. spec.	35WGZ805
Layout	35LYL405
Eff. date	05-14-2024
CD Diagram	CD0005
Poles	04
Leads	9#18 Y
Proprietary	False
Created date	08-28-2023

1.850 A @ 380.0 V

1.700 A @ 460.0 V

Design Code	B
Drip Cover	No Drip Cover
Duty Rating	CONT
Efficiency @ 100% Load	85.5 %
Electrically Isolated Bearing	Not Electrically Isolated
Feedback Device	NO FEEDBACK
Front Shaft Indicator	None
Heater Indicator	No Heater
High Voltage Full Load Amps	1.7 a
Insulation Class	F
Inverter Code	Inverter Duty
KVA Code	N
Lifting Lugs	No Lifting Lugs
Locked Bearing Indicator	No Locked Bearing
Motor Lead Quantity/Wire Size	9 @ 18 AWG
Motor Lead Termination	Flying Leads
Motor Standards	NEMA
Motor Type	3522M
Mounting Arrangement	F1
Number of Poles	4
Overall Length	11.63 IN
Power Factor	66
Product Family	General Purpose
Pulley End Bearing Type	Ball
Pulley Face Code	Standard
Pulley Shaft Indicator	Standard
Rodent Screen	None
Service Factor	1.15
Shaft Diameter	0.875 IN
Shaft Ground Indicator	No Shaft Grounding
Shaft Rotation	Reversible
Shaft Slinger Indicator	No Slinger

Speed	1470 rpm 1770 rpm
Speed Code	Single Speed
Starting Method	Direct on line
Thermal Device - Bearing	None
Thermal Device - Winding	None
Vibration Sensor Indicator	No Vibration Sensor
Winding Thermal 1	None
Winding Thermal 2	None

Nameplate

NP4304L									
CAT.NO.	GNEM3116T								
SPEC.	35L405Z805G1								
HP	1/.75KW	PH	3						
VOLTS	208-230/460//190/380								
AMPS	3.3-3.4/1.7//3.7/1.85								
R.P.M. (1/MIN)	1770//1470						WT.	17KG	KG
FRAME	143T	HZ	60//50			I.P.	22		
SER.F.	1.15	CODE	N	DES.	B	CLASS	F		
NOM.EFF.	85.5//84.0		% (100%)						
P.F.	66	IC01, 10:1 VT							
RATING	40C AMB-S1 CONT				CC	010A			
DE	6205	ODE	6203						
ENCL	OPSB	SN							
	SFA 3.6/1.8//4/2								
	IE3-50HZ-84.6(75%),82.3(50%)								
	IE3-60HZ-84.5(75%),81.0(50%)								

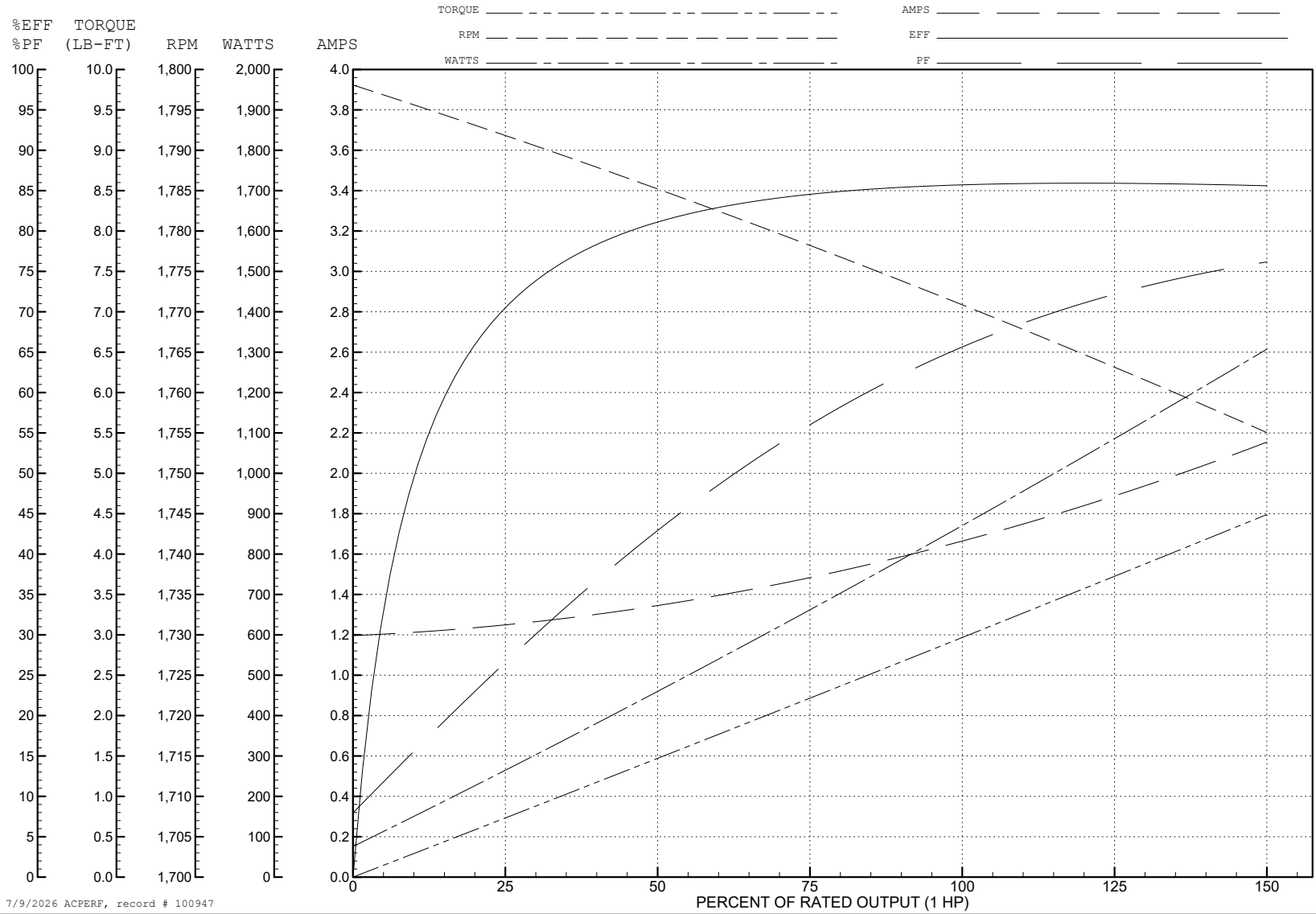
ABB Motors and Mechanical Inc.

WINDING # 35WGZ805

Typical performance - not guaranteed values.

1 HP 3 PH 60 HZ 1771 RPM 460 V 3522M

TORQUES (LB-FT): PO=15.85 PU=9.1 LR=10.45 LRA=15.67



7/9/2026 ACPERF, record # 100947

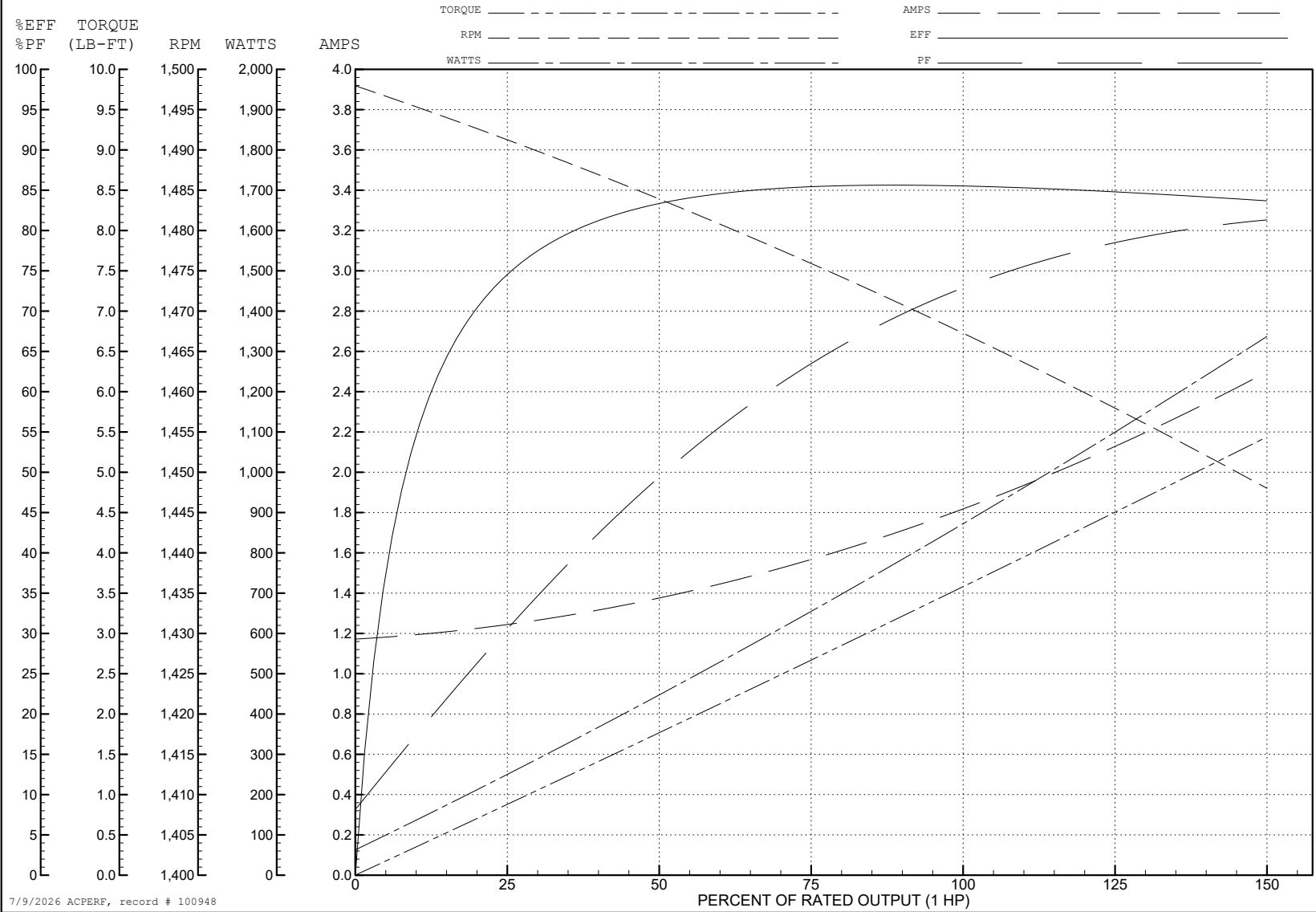
ABB Motors and Mechanical Inc.

WINDING # 35WGZ805

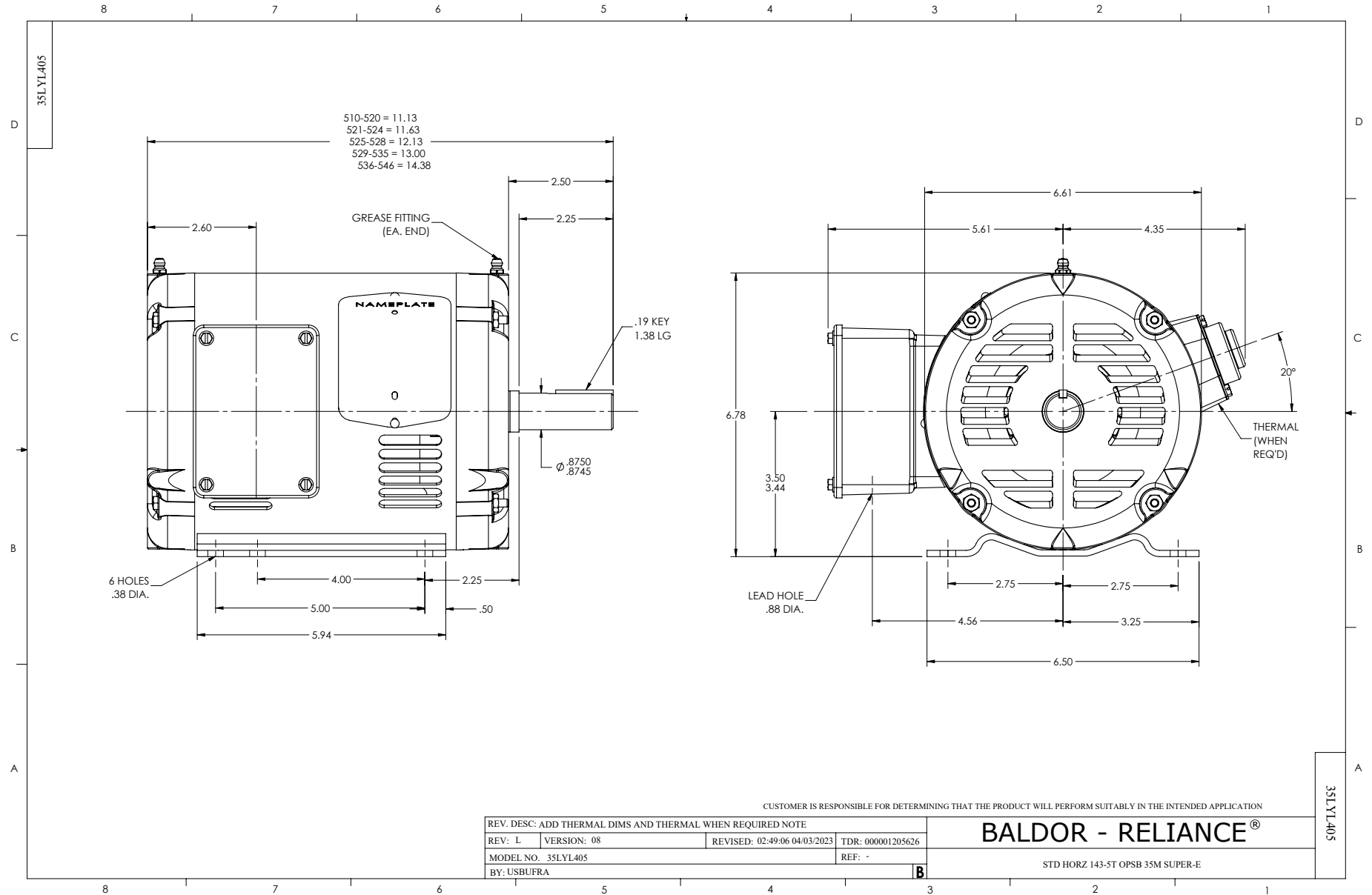
1 HP 3 PH 50 HZ 1467 RPM 380 V 3522M

Typical performance - not guaranteed values.

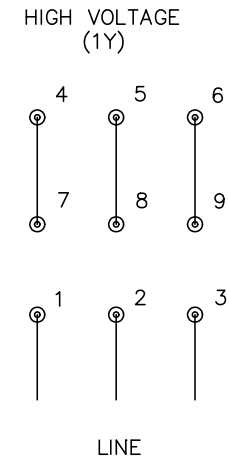
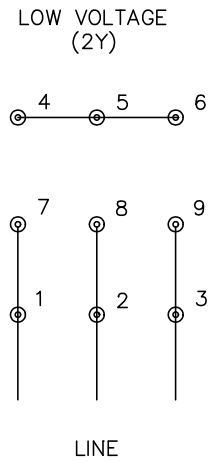
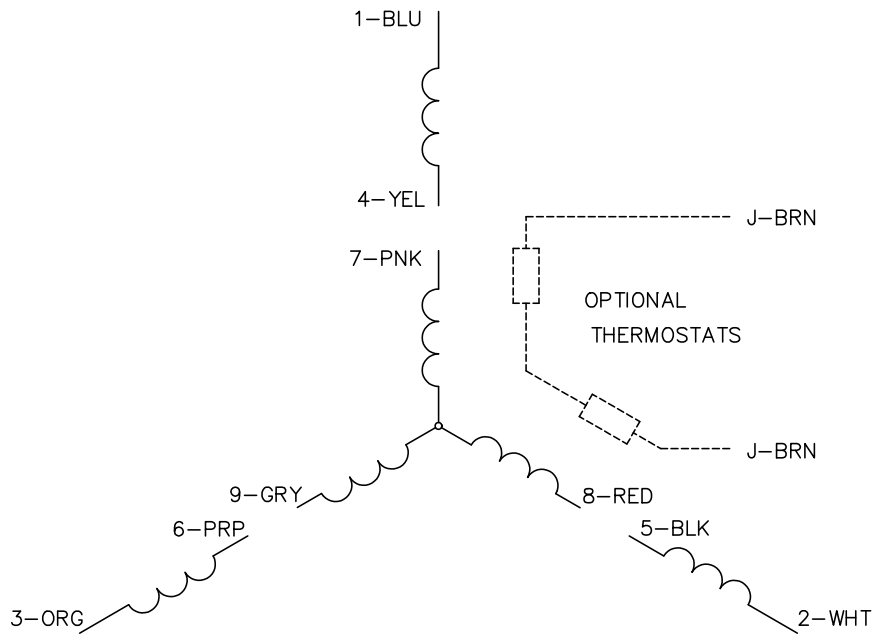
TORQUES (LB-FT): PO=14.3 PU=8.7 LR=10 LRA=14.6



7/9/2026 ACPERF, record # 100948



CD0005



NOTES:

1. INTERCHANGE ANY TWO LINE LEADS TO REVERSE ROTATION.
2. OPTIONAL THERMOSTATS ARE PROVIDED WHEN SPECIFIED.
3. ACTUAL NUMBER OF INTERNAL PARALLEL CIRCUITS MAY BE A MULTIPLE OF THOSE SHOWN ABOVE.
4. LEAD COLORS ARE OPTIONAL. LEADS MUST ALWAYS BE NUMBERED AS SHOWN.

REV. DESC: REVISE TO SHOW OPTIONAL COLORS			
REV. LTR: E	BY: JLP	REVISED: 01/19/99 10:15	TDR: 0171435
S00000		FILE: AAA00005140	MDL: -
		MTL: -	

BALDOR ELECTRIC Co.

3PH, DV, 9 LEADS

CD0005