

ABB BALDOR RELIANCE III

Customer information packet

GNEM31156-G

1HP//.75KW, 1170//965RPM, 3PH, 60//50HZ, 56

Class - None

Division - Not Applicable

Specifications

| | |
|---------------------------------------|---|
| Enclosure | OPSB |
| Frame | 56 |
| Frame Material | Steel |
| Frequency | 50.00 Hz 60.00 Hz |
| Haz Area Class and Group | None |
| Haz Area Division | Not Applicable |
| Motor Letter Type | Three Phase |
| Output @ Frequency | 1.000 HP @ 60 HZ .750 KW @ 50 HZ |
| Phase | 3 |
| Synchronous Speed @ Frequency | 1200 RPM @ 60 HZ |
| Voltage @ Frequency | 190.0 V @ 50 HZ 208.0 V @ 60 HZ 230.0 V @ 60 HZ 380.0 V @ 50 HZ 460.0 V @ 60 HZ |
| Agency Approvals | CE WEEE UKCA CURUSEEV IE3 NEMA PREMIUM |
| Ambient Temperature | 40 °C |
| Auxiliary Box | NO AUXILLARY BOX |
| Auxiliary Box Lead Termination | None |
| Base Indicator | Rigid |
| Bearing Grease Type | Polyrex EM (-20F +300F) |
| Blower | None |
| Current @ Voltage | 4.000 A @ 190.0 V 3.600 A @ 208.0 V 3.560 A @ 230.0 V |

Part Detail

| | |
|---------------------|------------|
| Revision | D |
| Type | AC |
| Mech. spec. | 35Z946 |
| Base | |
| Status | PRD/A |
| Elec. spec. | 35WGG330 |
| Layout | 35LYZ946 |
| Eff. date | 01-14-2026 |
| CD Diagram | CD0005 |
| Poles | 06 |
| Leads | 9#18 |
| Proprietary | False |
| Created date | 09-11-2023 |

2.000 A @ 380.0 V

1.780 A @ 460.0 V

| | |
|--------------------------------------|---------------------------|
| Design Code | B |
| Drip Cover | No Drip Cover |
| Duty Rating | CONT |
| Efficiency @ 100% Load | 82.5 % |
| Electrically Isolated Bearing | Not Electrically Isolated |
| Feedback Device | NO FEEDBACK |
| Front Shaft Indicator | None |
| Heater Indicator | No Heater |
| High Voltage Full Load Amps | 1.8 a |
| Insulation Class | F |
| Inverter Code | Inverter Duty |
| KVA Code | K |
| Lifting Lugs | No Lifting Lugs |
| Locked Bearing Indicator | Locked Bearing |
| Motor Lead Quantity/Wire Size | 9 @ 18 AWG |
| Motor Lead Termination | Flying Leads |
| Motor Standards | NEMA |
| Motor Type | 3526M |
| Mounting Arrangement | F1 |
| Number of Poles | 6 |
| Overall Length | 12.06 IN |
| Power Factor | 64 |
| Product Family | General Purpose |
| Pulley End Bearing Type | Ball |
| Pulley Face Code | Standard |
| Pulley Shaft Indicator | Standard |
| Rodent Screen | None |
| RoHS Status | ROHS COMPLIANT |
| Service Factor | 1.15 |
| Shaft Diameter | 0.625 IN |
| Shaft Ground Indicator | Shaft Grounding |
| Shaft Rotation | Reversible |

| | |
|-----------------------------------|---------------------|
| Shaft Slinger Indicator | No Slinger |
| Speed | 1170 rpm 965 rpm |
| Speed Code | Single Speed |
| Starting Method | Direct on line |
| Thermal Device - Bearing | None |
| Thermal Device - Winding | None |
| Vibration Sensor Indicator | No Vibration Sensor |
| Winding Thermal 1 | None |
| Winding Thermal 2 | None |

Nameplate

| NP4304L | | | | | | | | | |
|-----------------------|------------------------------|---------------|-----------------|-------------|-------------|--------------|-----------|--|--|
| CAT.NO. | GNEM31156-G | | | | | | | | |
| SPEC. | 35Z946G330G1 | | | | | | | | |
| HP | 1HP//.75KW | | | | PH | 3 | | | |
| VOLTS | 208-230/460//190/380 | | | | | | | | |
| AMPS | 3.6-3.56/1.78//4/2 | | | | | | | | |
| R.P.M. (1/MIN) | 1170//965 | | | | WT. | 18KG | KG | | |
| FRAME | 56 | HZ | 60//50 | | I.P. | 22 | | | |
| SER.F. | 1.15 | CODE | K | DES. | B | CLASS | H | | |
| NOM.EFF. | 82.5//78.9 | | % (100%) | | | | | | |
| P.F. | 64 | IC01, 10:1 VT | | | | | | | |
| RATING | 40C AMB-S1 CONT | | | | CC | 010A | | | |
| DE | 6205 | ODE | 6203 | | | | | | |
| ENCL | OPSB | SN | | | | | | | |
| | SFA 4/2//4.6/2.3 | | | | | | | | |
| | IE3-50HZ 81.7(75%),81.0(50%) | | | | | | | | |
| | IE3-60HZ 82.3(75%),80.1(50%) | | | | | | | | |

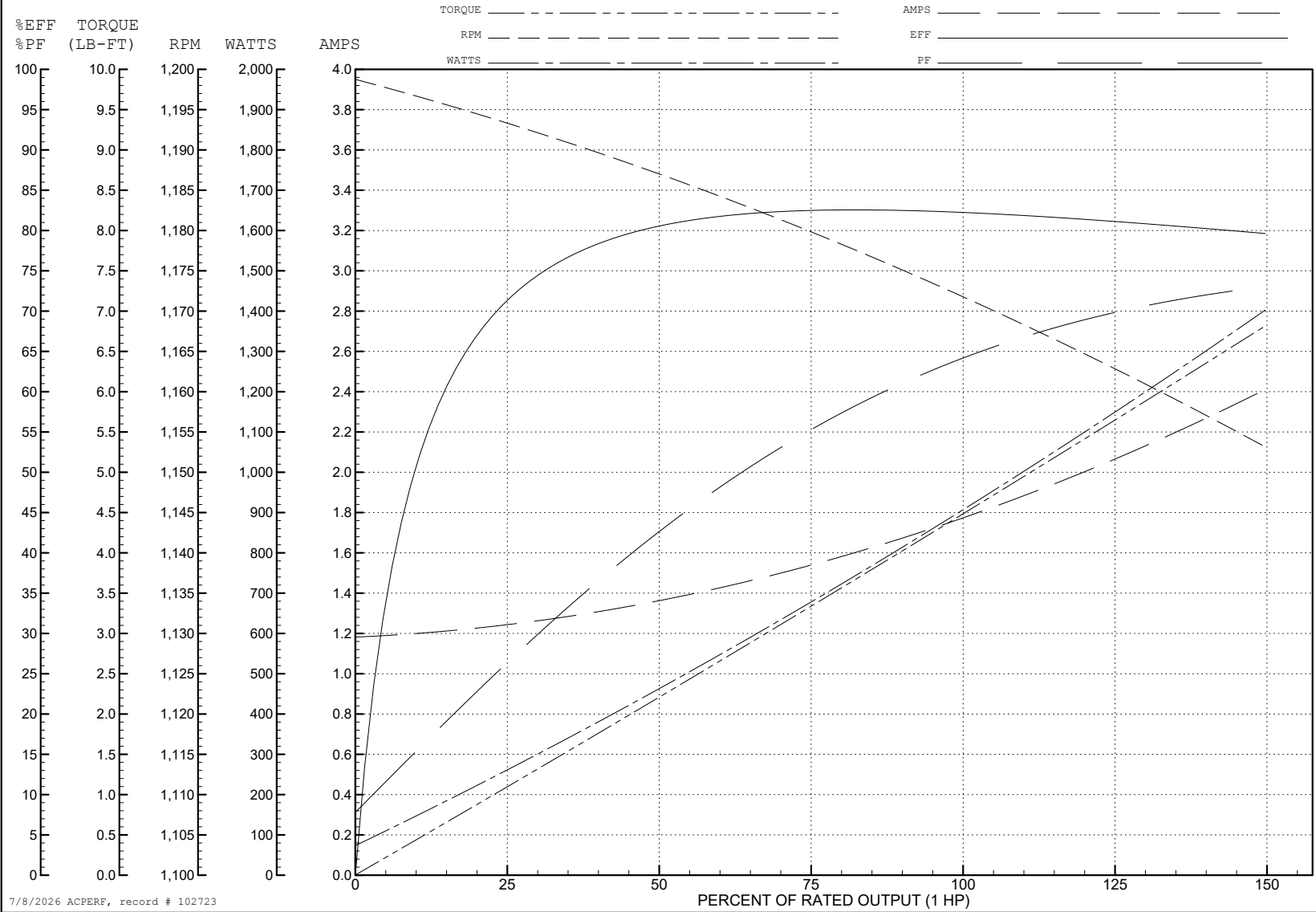
ABB Motors and Mechanical Inc.

WINDING # 35WGG330

1 HP 3 PH 60 HZ 1172 RPM 460 V 3526M

Typical performance - not guaranteed values.

TORQUES (LB-FT): PO=13.2 PU=7.9 LR=9.7 LRA=10.2



7/8/2026 ACPERF, record # 102723

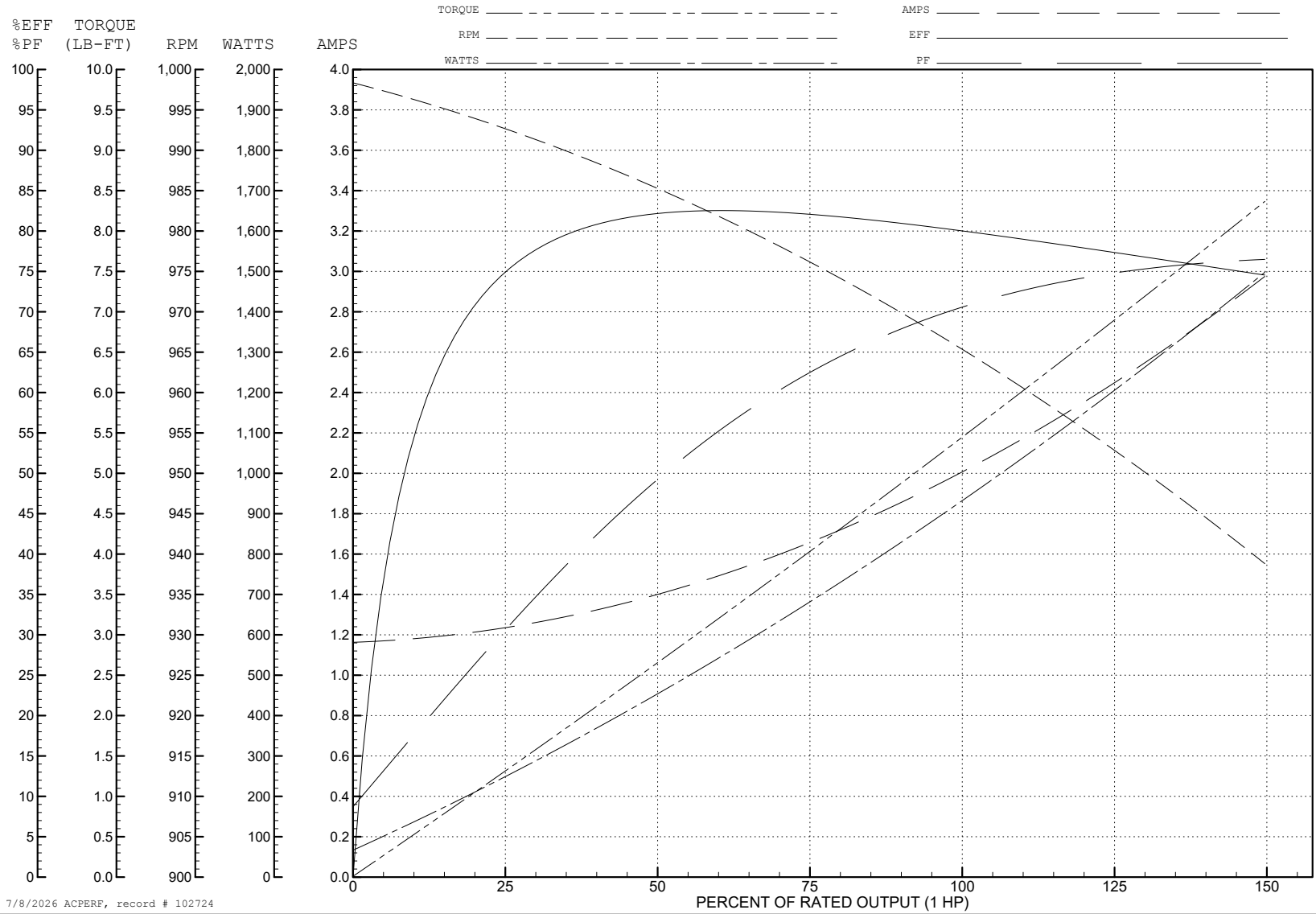
ABB Motors and Mechanical Inc.

WINDING # 35WGG330

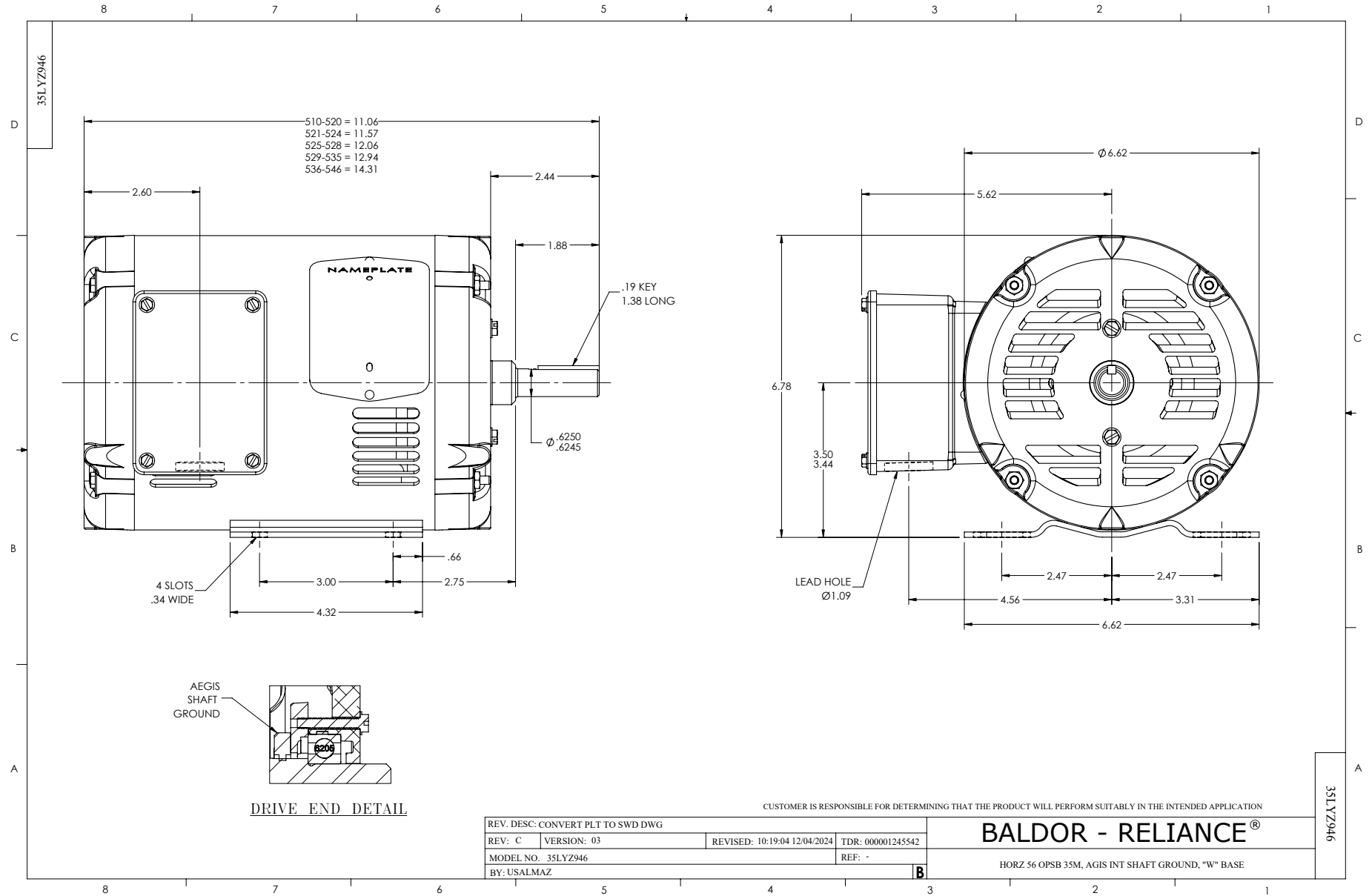
Typical performance - not guaranteed values.

1 HP 3 PH 50 HZ 966 RPM 380 V 3526M

TORQUES (LB-FT): PO=12.2 PU=7.8 LR=9.5 LRA=9.7



7/8/2026 ACPERF, record # 102724



CD0005



LOW VOLTAGE
(2Y)



LINE

HIGH VOLTAGE
(1Y)



LINE

NOTES:

1. INTERCHANGE ANY TWO LINE LEADS TO REVERSE ROTATION.
2. OPTIONAL THERMOSTATS ARE PROVIDED WHEN SPECIFIED.
3. ACTUAL NUMBER OF INTERNAL PARALLEL CIRCUITS MAY BE A MULTIPLE OF THOSE SHOWN ABOVE.
4. LEAD COLORS ARE OPTIONAL. LEADS MUST ALWAYS BE NUMBERED AS SHOWN.

CD0005

REV. DESC: REVISE TO SHOW OPTIONAL COLORS

REV. LTR: E BY: JLP REVISED: 01/19/99 10:15 TDR: 0171435

500000

FILE: AAA00005140

MDL: -

MTL: -

BALDOR ELECTRIC Co.

3PH, DV, 9 LEADS