

ABB BALDOR RELIANCE III



Customer information packet GNEM2528T-G

20HP//15KW, 1180//980RPM, 3PH, 60//50HZ, 286

Specifications

Enclosure	OPSB
Frame	286T
Frame Material	Steel
Frequency	50.00 Hz 60.00 Hz
Motor Letter Type	Three Phase
Output @ Frequency	20.000 HP @ 60 HZ 15.000 KW @ 50 HZ
Phase	3
Synchronous Speed @ Frequency	1200 RPM @ 60 HZ
Voltage @ Frequency	460.0 V @ 60 HZ 380.0 V @ 50 HZ 230.0 V @ 60 HZ 208.0 V @ 60 HZ 190.0 V @ 50 HZ
Agency Approvals	UKCA WEEE NEMA PREMIUM IE3 CURUSEEV CE
Ambient Temperature	40 °C
Auxiliary Box	NO AUXILLARY BOX
Auxiliary Box Lead Termination	None
Base Indicator	Rigid
Bearing Grease Type	Polyrex EM (-20F +300F)
Blower	None
Current @ Voltage	66.000 A @ 190.0 V 58.000 A @ 230.0 V 56.000 A @ 208.0 V 33.000 A @ 380.0 V 29.000 A @ 460.0 V

Part Detail

Revision	A
Type	AC
Mech. spec.	40E246
Base	
Status	PRD/A
Elec. spec.	40WGX408
Layout	40LYE246
Eff. date	12-22-2023
CD Diagram	CD0180
Poles	06
Leads	9#10
Proprietary	False
Created date	09-19-2023

Design Code	A
Drip Cover	No Drip Cover
Duty Rating	CONT
Efficiency @ 100% Load	92.4 %
Electrically Isolated Bearing	Not Electrically Isolated
Feedback Device	NO FEEDBACK
Front Shaft Indicator	None
Heater Indicator	No Heater
High Voltage Full Load Amps	29.0 a
Insulation Class	H
Inverter Code	Inverter Duty
KVA Code	K
Lifting Lugs	Standard Lifting Lugs
Locked Bearing Indicator	No Locked Bearing
Motor Lead Quantity/Wire Size	9 @ 10 AWG
Motor Lead Termination	Flying Leads
Motor Standards	NEMA
Motor Type	4060M
Mounting Arrangement	F1
Number of Poles	6
Overall Length	26.06 IN
Power Factor	70
Product Family	General Purpose
Pulley End Bearing Type	Ball
Pulley Face Code	Standard
Pulley Shaft Indicator	Standard
Rodent Screen	None
RoHS Status	ROHS COMPLIANT
Service Factor	1.15
Shaft Diameter	1.875 IN
Shaft Ground Indicator	Shaft Grounding
Shaft Rotation	Reversible
Shaft Slinger Indicator	No Slinger
Speed	1180 rpm

	980 rpm
Speed Code	Single Speed
Starting Method	Direct on line
Thermal Device - Bearing	None
Thermal Device - Winding	None
Vibration Sensor Indicator	No Vibration Sensor
Winding Thermal 1	None
Winding Thermal 2	None

Nameplate

NP4304L										
CAT.NO.	GNEM2528T-G									
SPEC.	40E246X408G1									
HP	20HP//15KW				PH	3				
VOLTS	208-230/460//190/380									
AMPS	56-58/29//66/33									
R.P.M. (1/MIN)	1180//980				WT.	167KG	KG			
FRAME	286T	HZ	60//50		I.P.	22				
SER.F.	1.15	CODE	K	DES.	A	CLASS	H			
NOM.EFF.	92.4//91.2		% (100%)							
P.F.	70	IC01, 10:1 VT								
RATING	40C AMB-S1 CONT			CC	010A					
DE	6311	ODE	6309							
ENCL	OPSB	SN								
	SFA 64/32//74/37									
	IE3-50HZ 93.2 (75%),92.8 (50%)									
	IE3-60HZ 93.2 (75%),92.0 (50%)									

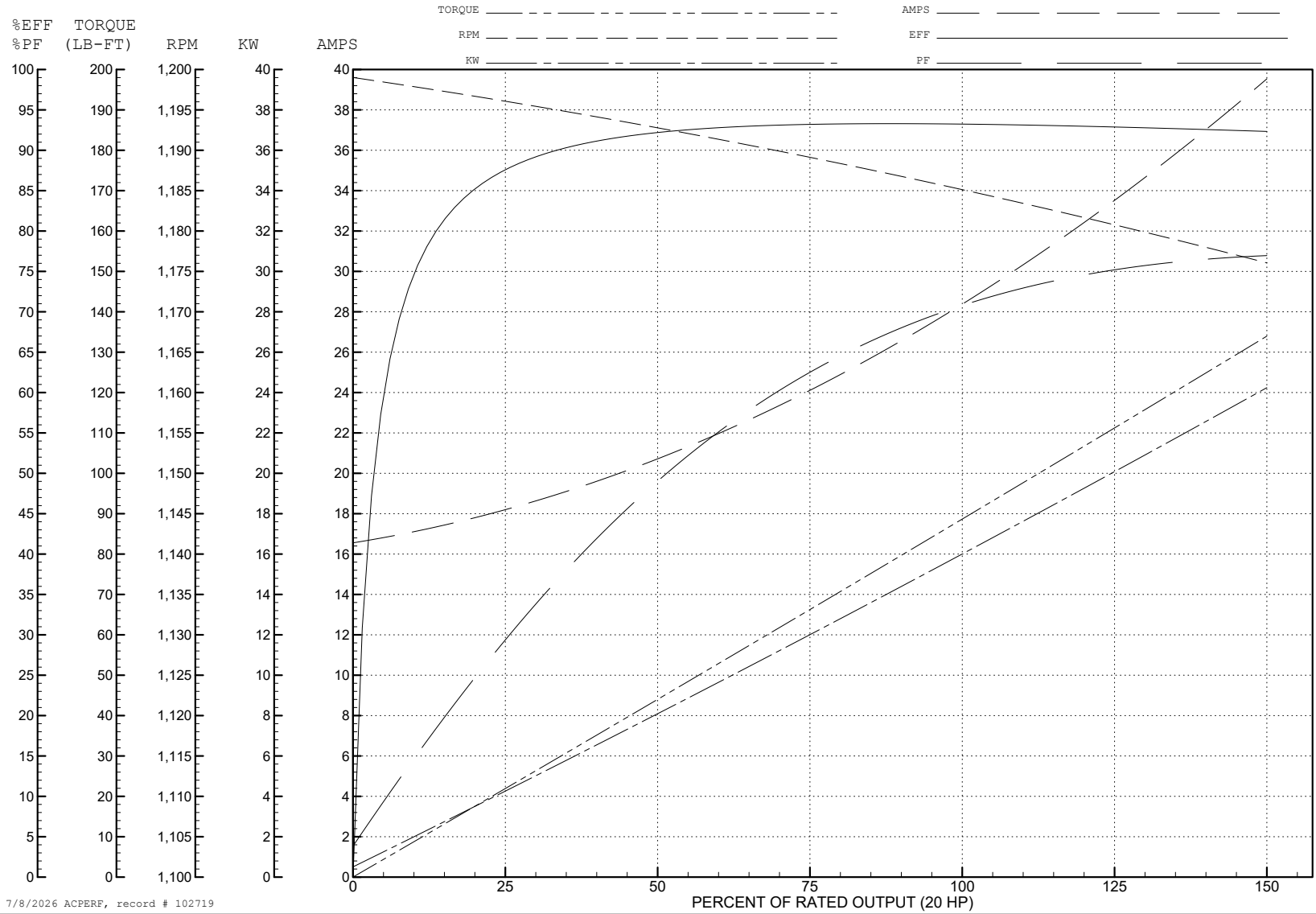
ABB Motors and Mechanical Inc.

WINDING # 40WGx408

Typical performance - not guaranteed values.

20 HP 3 PH 60 HZ 1185 RPM 460 V 4060M

TORQUES (LB-FT): PO=330 PU=124 LR=181 LRA=201



7/8/2026 ACPERF, record # 102719

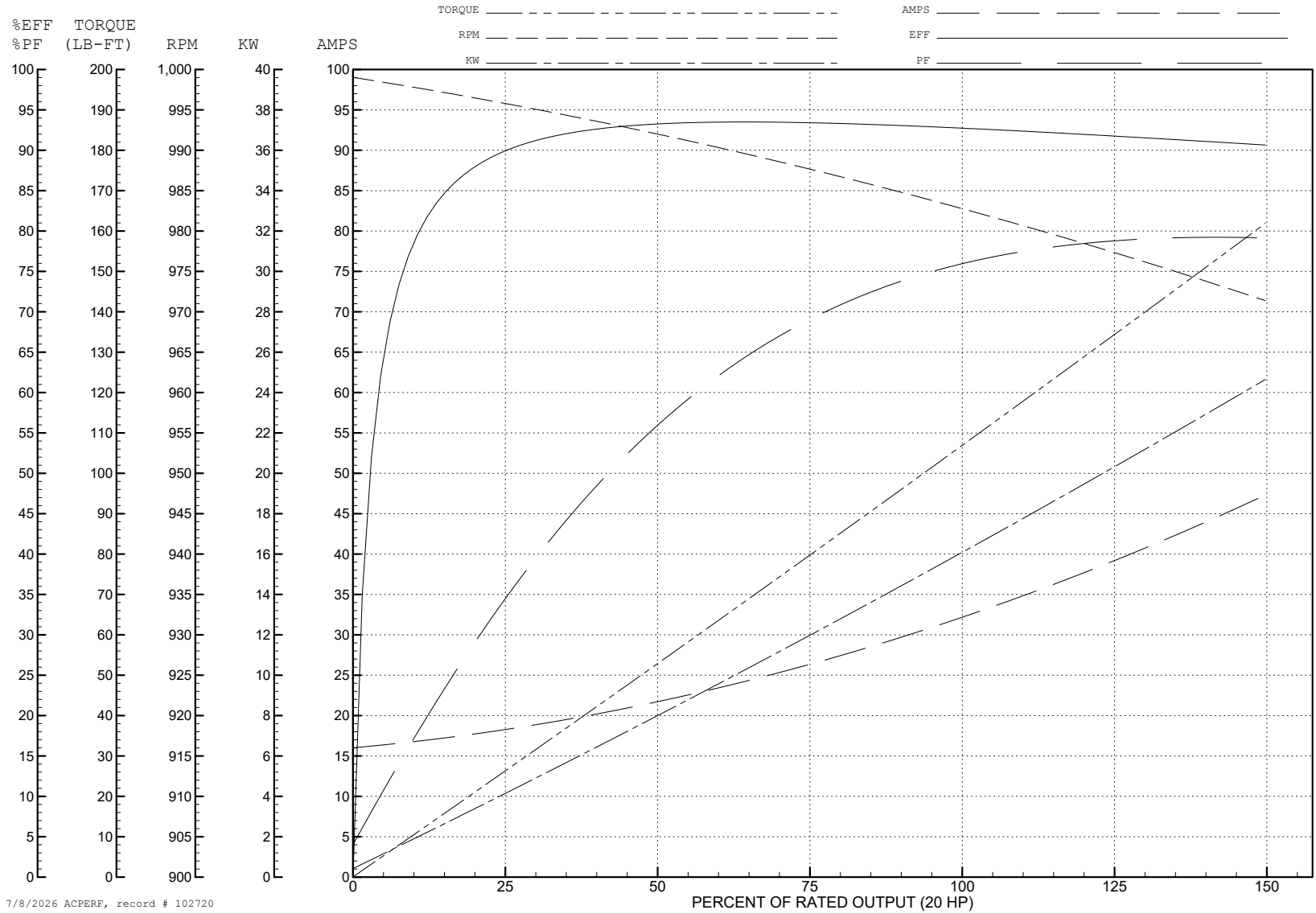
ABB Motors and Mechanical Inc.

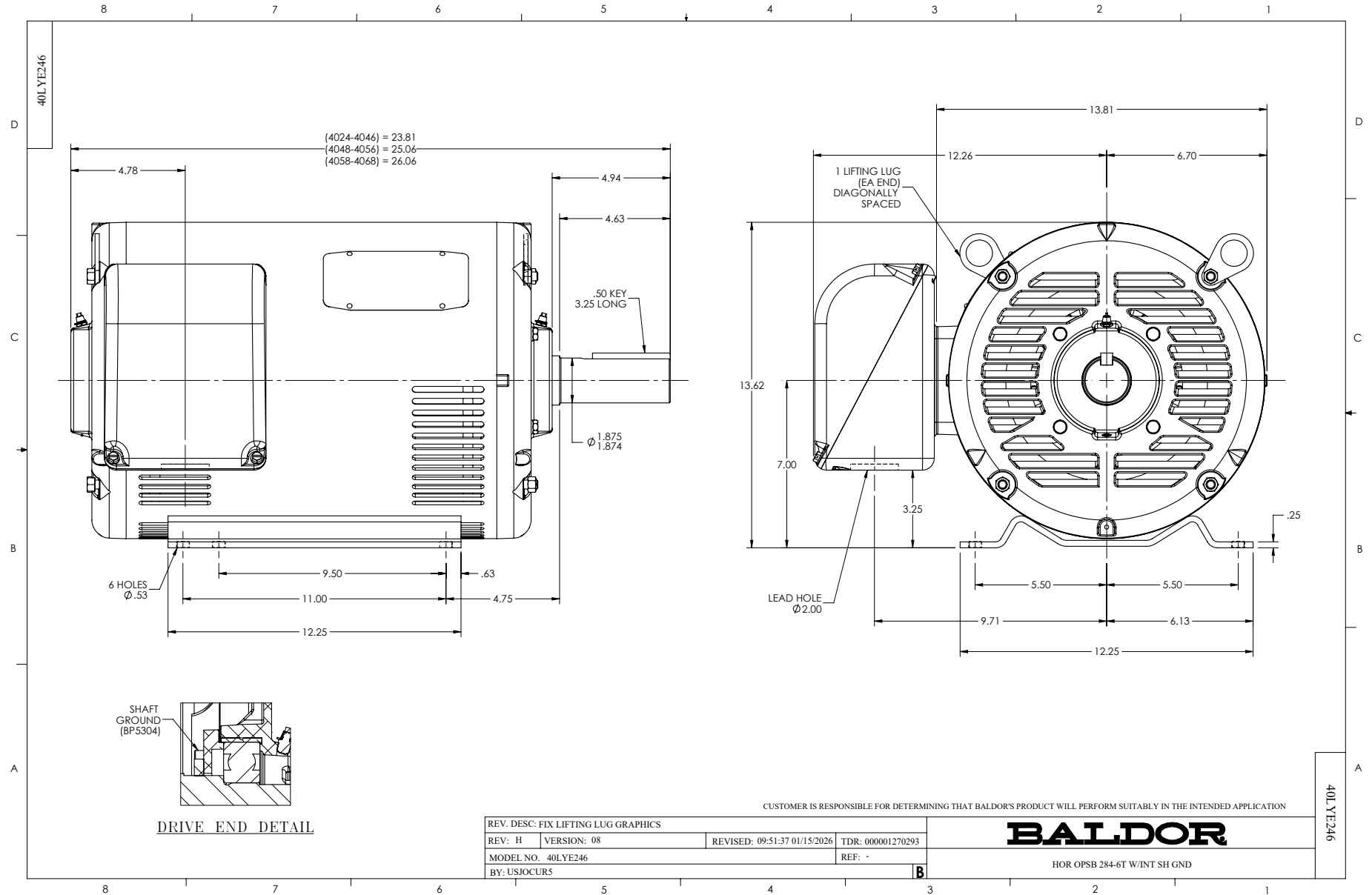
WINDING # 40WGx408

20 HP 3 PH 50 HZ 983 RPM 380 V 4060M

Typical performance - not guaranteed values.

TORQUES (LB-FT): PO=318 PU=128 LR=186 LRA=195

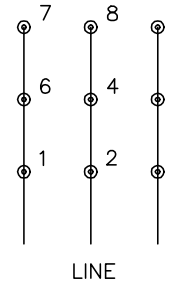




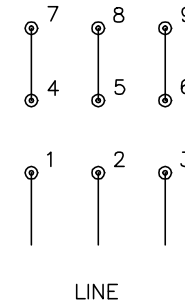
CD0180



LOW VOLTAGE
(2D)



HIGH VOLTAGE
(1D)



NOTES:

1. INTERCHANGE ANY TWO LINE LEADS TO REVERSE ROTATION.
2. OPTIONAL THERMOSTATS ARE PROVIDED WHEN SPECIFIED.
3. ACTUAL NUMBER OF INTERNAL PARALLEL CIRCUITS MAY BE A MULTIPLE OF THOSE SHOWN ABOVE.
4. LEAD COLORS ARE OPTIONAL. LEADS MUST ALWAYS BE NUMBERED AS SHOWN.

CD0180

REV. DESC: ADD CLASS CONN00000007		
REV. LTR: D	VERSION: 01	TDR: 000001099922
FILE: \AAA\00005\148	REVISED: 10: 25: 29 02/19/2019	BY: ENBRIRO
MTL: -		

BALDOR - RELIANCE®

3PH, DV, 9 LEADS, DELTA CONNECTION

SH 1 of 1