

ABB BALDOR RELIANCE III

Customer information packet GNEM2524T-G

15HP//11KW, 1180//980RPM, 3PH, 60//50HZ, 284

Specifications

Enclosure	OPSB
Frame	284T
Frame Material	Steel
Frequency	50.00 Hz 60.00 Hz
Motor Letter Type	Three Phase
Output @ Frequency	15.000 HP @ 60 HZ 11.000 KW @ 50 HZ
Phase	3
Synchronous Speed @ Frequency	1200 RPM @ 60 HZ
Voltage @ Frequency	460.0 V @ 60 HZ 380.0 V @ 50 HZ 230.0 V @ 60 HZ 208.0 V @ 60 HZ 190.0 V @ 50 HZ
Agency Approvals	UKCA WEEE NEMA PREMIUM IE3 CURUSEEV CE
Ambient Temperature	40 °C
Auxiliary Box	NO AUXILLARY BOX
Auxiliary Box Lead Termination	None
Base Indicator	Rigid
Bearing Grease Type	Polyrex EM (-20F +300F)
Blower	None
Current @ Voltage	46.000 A @ 190.0 V 42.000 A @ 208.0 V 40.000 A @ 230.0 V 23.000 A @ 380.0 V 20.000 A @ 460.0 V

Part Detail

Revision	A
Type	AC
Mech. spec.	40E246
Base	
Status	PRD/A
Elec. spec.	40WGX502
Layout	40LYE246
Eff. date	04-26-2024
CD Diagram	CD0180
Poles	06
Leads	9#10
Proprietary	False
Created date	11-29-2023

Design Code	A
Drip Cover	No Drip Cover
Duty Rating	CONT
Efficiency @ 100% Load	91.7 %
Electrically Isolated Bearing	Not Electrically Isolated
Feedback Device	NO FEEDBACK
Front Shaft Indicator	None
Heater Indicator	No Heater
High Voltage Full Load Amps	20.0 a
Insulation Class	H
Inverter Code	Inverter Duty
KVA Code	J
Lifting Lugs	Standard Lifting Lugs
Locked Bearing Indicator	No Locked Bearing
Motor Lead Quantity/Wire Size	9 @ 10 AWG
Motor Lead Termination	Flying Leads
Motor Standards	NEMA
Motor Type	4056M
Mounting Arrangement	F1
Number of Poles	6
Overall Length	25.06 IN
Power Factor	75
Product Family	General Purpose
Pulley End Bearing Type	Ball
Pulley Face Code	Standard
Pulley Shaft Indicator	Standard
Rodent Screen	None
RoHS Status	ROHS COMPLIANT
Service Factor	1.15
Shaft Diameter	1.875 IN
Shaft Ground Indicator	Shaft Grounding
Shaft Rotation	Reversible
Shaft Slinger Indicator	No Slinger
Speed	1180 rpm

	980 rpm
Speed Code	Single Speed
Starting Method	Direct on line
Thermal Device - Bearing	None
Thermal Device - Winding	None
Vibration Sensor Indicator	No Vibration Sensor
Winding Thermal 1	None
Winding Thermal 2	None

Nameplate

NP4304L

CAT.NO.	GNEM2524T-G						
SPEC.	40E246X502G1						
HP	15HP//11KW	PH	3				
VOLTS	208-230/460//190/380						
AMPS	44-42/21//48/24						
R.P.M. (1/MIN)	1185//980	WT.	369	KG			
FRAME	284T	HZ	60//50	I.P.	22		
SER.F.	1.15	CODE	J	DES.	A	CLASS	H
NOM.EFF.	91.7//90.3	% (100%)					
P.F.	73	IC01, 10:1 VT					
RATING	40C AMB-CONT	CC	010A				
DE	6311	ODE	6309				
ENCL	OPSB	SN					
	IE3-50HZ 92.8(75%),92.5(50%)						
	IE3-60HZ 93.4(75%),92.4(50%)						
	SFA 49-46/23//52/26						

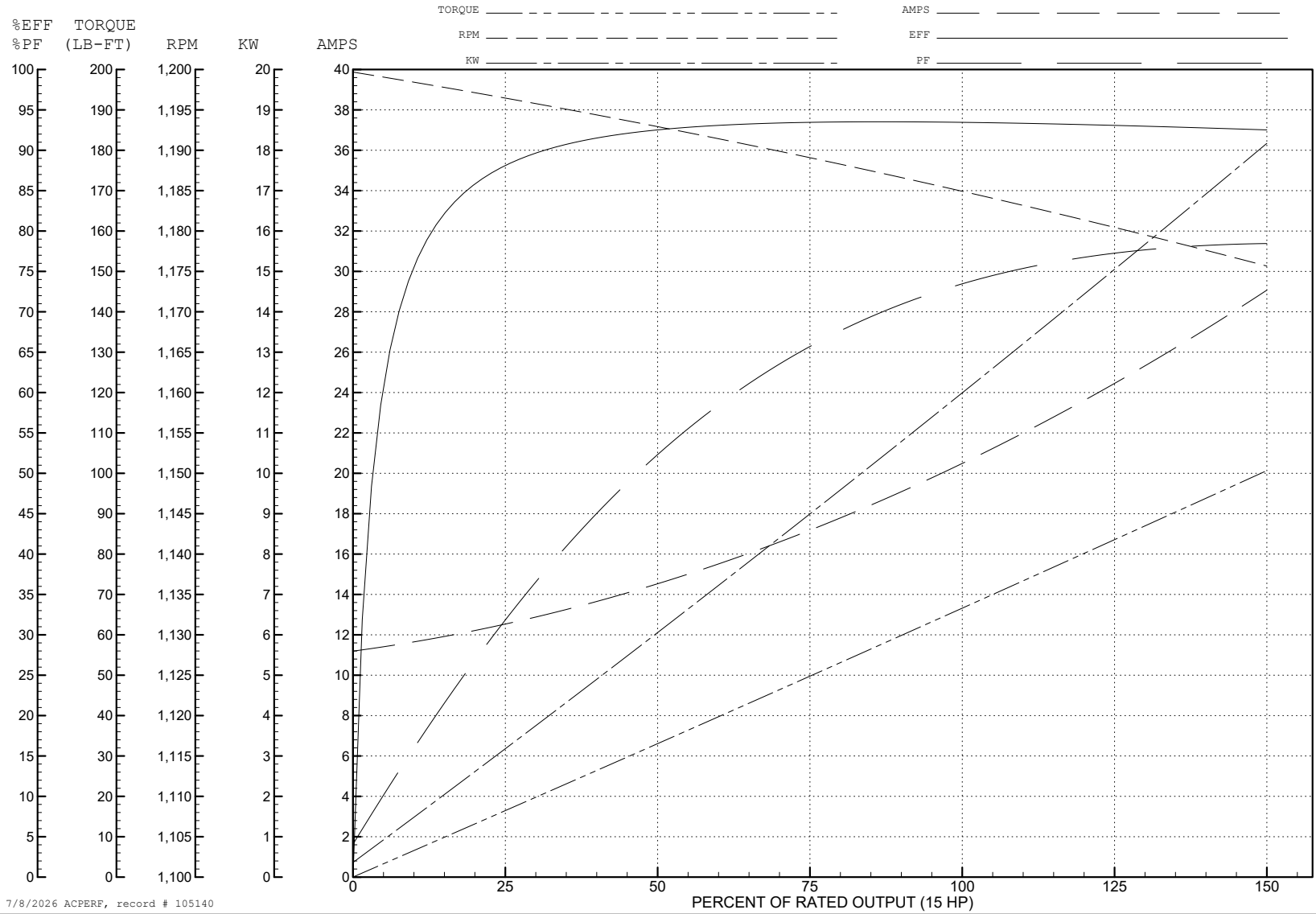
ABB Motors and Mechanical Inc.

WINDING # 40WGX502

Typical performance - not guaranteed values.

15 HP 3 PH 60 HZ 1185.2 RPM 460 V 4056M

TORQUES (LB-FT): PO=230 PU=127 LR=139 LRA=140



7/8/2026 ACPERF, record # 105140

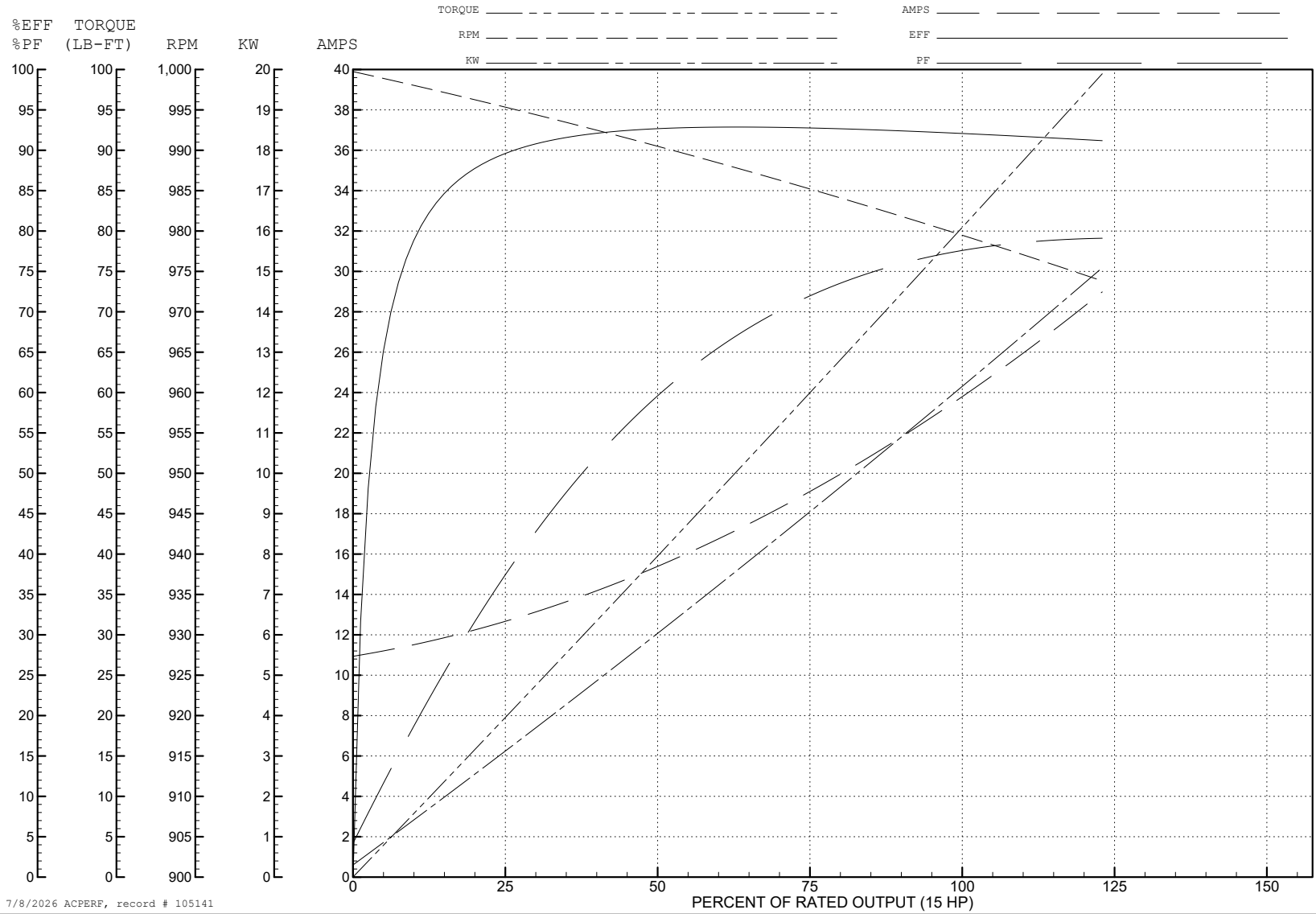
ABB Motors and Mechanical Inc.

WINDING # 40WGX502

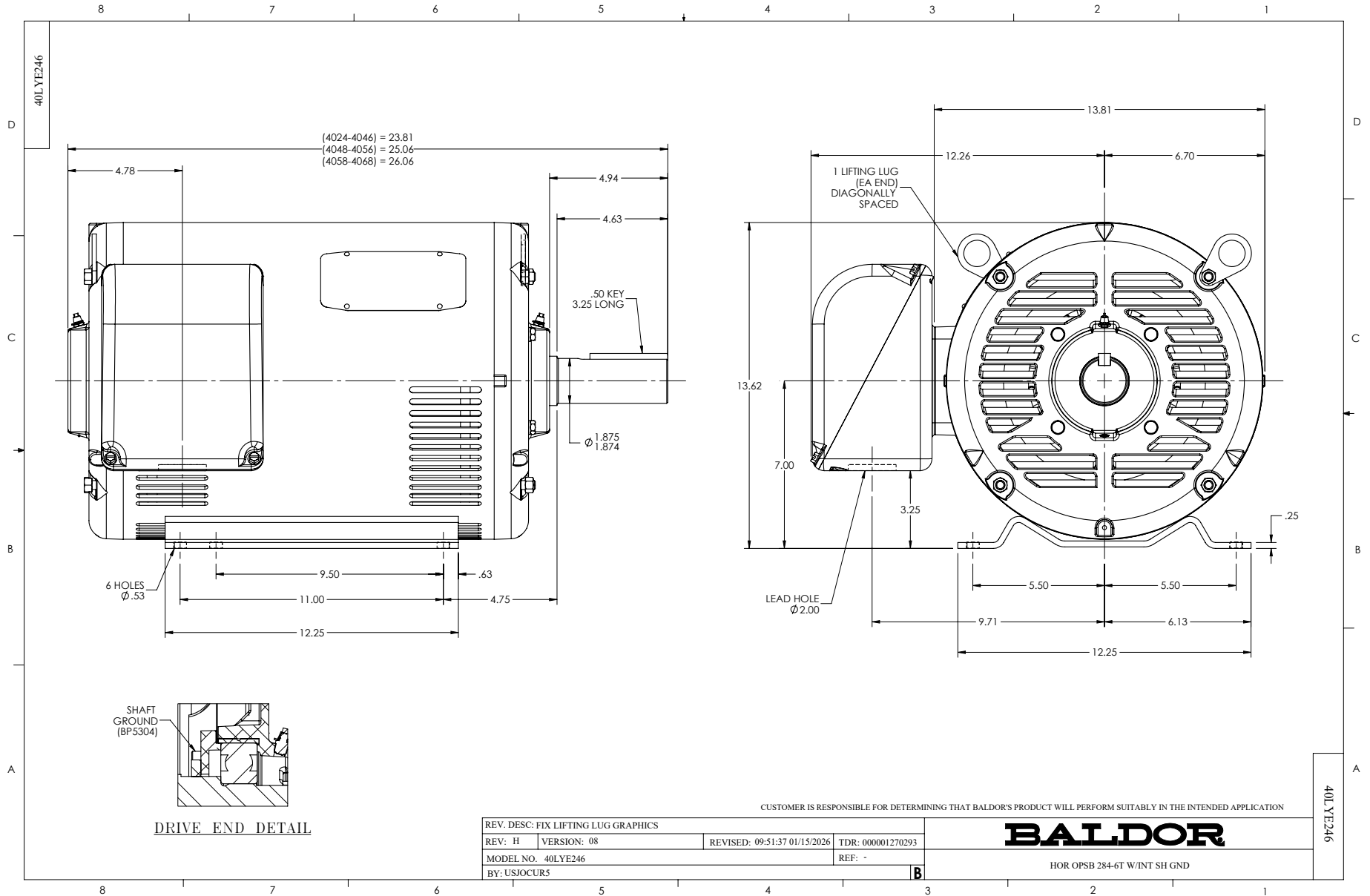
Typical performance - not guaranteed values.

15 HP 3 PH 50 HZ 979.8 RPM 380 V 4056M

TORQUES (LB-FT): PO=226 PU=124 LR=137 LRA=139



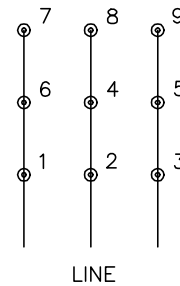
7/8/2026 ACPERF, record # 105141



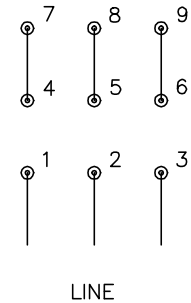
CD0180



LOW VOLTAGE
(2D)



HIGH VOLTAGE
(1D)



NOTES:

1. INTERCHANGE ANY TWO LINE LEADS TO REVERSE ROTATION.
2. OPTIONAL THERMOSTATS ARE PROVIDED WHEN SPECIFIED.
3. ACTUAL NUMBER OF INTERNAL PARALLEL CIRCUITS MAY BE A MULTIPLE OF THOSE SHOWN ABOVE.
4. LEAD COLORS ARE OPTIONAL. LEADS MUST ALWAYS BE NUMBERED AS SHOWN.

CD0180

REV. DESC: ADD CLASS CONN00000007		
REV. LTR: D	VERSION: 01	TDR: 000001099922
FILE: \AAA\00005\148	REVISED: 10: 25: 29 02/19/2019	BY: ENBRIRO
MTL: -	© □	

BALDOR - RELIANCE®

3PH, DV, 9 LEADS, DELTA CONNECTION

SH 1 of 1