

ABB BALDOR RELIANCE III

Customer information packet

GNEM2515T

20HP//15KW, 1775//1470RPM, 3PH, 60//50HZ, 25

Class - None

Division - Not Applicable

Specifications

Enclosure	OPSB
Frame	256T
Frame Material	Steel
Frequency	50.00 Hz 60.00 Hz
Haz Area Class and Group	None
Haz Area Division	Not Applicable
Motor Letter Type	Three Phase
Output @ Frequency	20.000 HP @ 60 HZ 15.000 KW @ 50 HZ
Phase	3
Synchronous Speed @ Frequency	1500 RPM @ 50 HZ
Voltage @ Frequency	208.0 V @ 60 HZ 190.0 V @ 50 HZ 230.0 V @ 60 HZ 380.0 V @ 50 HZ 460.0 V @ 60 HZ
Agency Approvals	WEEE UKCA NEMA PREMIUM (OLD LOGO) NEMA PREMIUM IE3 CURUSEEV CE
Ambient Temperature	40 °C
Auxiliary Box	NO AUXILLARY BOX
Auxiliary Box Lead Termination	None
Base Indicator	Rigid
Bearing Grease Type	Polyrex EM (-20F +300F)
Blower	None
Current @ Voltage	58.000 A @ 190.0 V 52.000 A @ 208.0 V

Part Detail

Revision	G
Type	AC
Mech. spec.	39K57
Base	
Status	PRD/A
Elec. spec.	39WGY464
Layout	39LYK057
Eff. date	12-12-2025
CD Diagram	CD0180
Poles	04
Leads	9#10
Proprietary	False
Created date	08-15-2023

50.000 A @ 230.0 V
 29.000 A @ 380.0 V
 25.000 A @ 460.0 V

Design Code	A
Drip Cover	No Drip Cover
Duty Rating	CONT
Efficiency @ 100% Load	93.0 %
Electrically Isolated Bearing	Not Electrically Isolated
Feedback Device	NO FEEDBACK
Front Shaft Indicator	None
Heater Indicator	No Heater
High Voltage Full Load Amps	25.0 a
Insulation Class	F
Inverter Code	Inverter Duty
KVA Code	J
Lifting Lugs	Standard Lifting Lugs
Locked Bearing Indicator	No Locked Bearing
Motor Lead Quantity/Wire Size	9 @ 10 AWG
Motor Lead Termination	Flying Leads
Motor Standards	NEMA
Motor Type	3958M
Mounting Arrangement	F1
Number of Poles	4
Overall Length	23.19 IN
Power Factor	81
Product Family	General Purpose
Pulley End Bearing Type	Ball
Pulley Face Code	Standard
Pulley Shaft Indicator	Standard
Rodent Screen	None
RoHS Status	ROHS COMPLIANT
Service Factor	1.15
Shaft Diameter	1.625 IN
Shaft Ground Indicator	No Shaft Grounding

Shaft Rotation	Reversible
Shaft Slinger Indicator	No Slinger
Speed	1470 rpm 1775 rpm
Speed Code	Single Speed
Starting Method	Direct on line
Thermal Device - Bearing	None
Thermal Device - Winding	None
Vibration Sensor Indicator	No Vibration Sensor
Winding Thermal 1	None
Winding Thermal 2	None

Nameplate

NP4304L										
CAT.NO.	GNEM2515T									
SPEC.	39K057Y464G1									
HP	20HP//15KW				PH	3				
VOLTS	208-230/460//190/380									
AMPS	52-50/25//58/29									
R.P.M. (1/MIN)	1775//1470				WT.	132KG	KG			
FRAME	256T	HZ	60//50		I.P.	22				
SER.F.	1.15	CODE	J	DES.	A	CLASS	F			
NOM.EFF.	93//92.1		% (100%)							
P.F.	81	IC01, 10:1 VT								
RATING	40C AMB-S1 CONT			CC	010A					
DE	6309	ODE	6208							
ENCL	OPSB	SN								
	SFA 60-56/28//66/33									
	IE3-50HZ 93.5(75%),93.4(50%)									
	IE3-60HZ-93.6(75%),92.8(50%)									

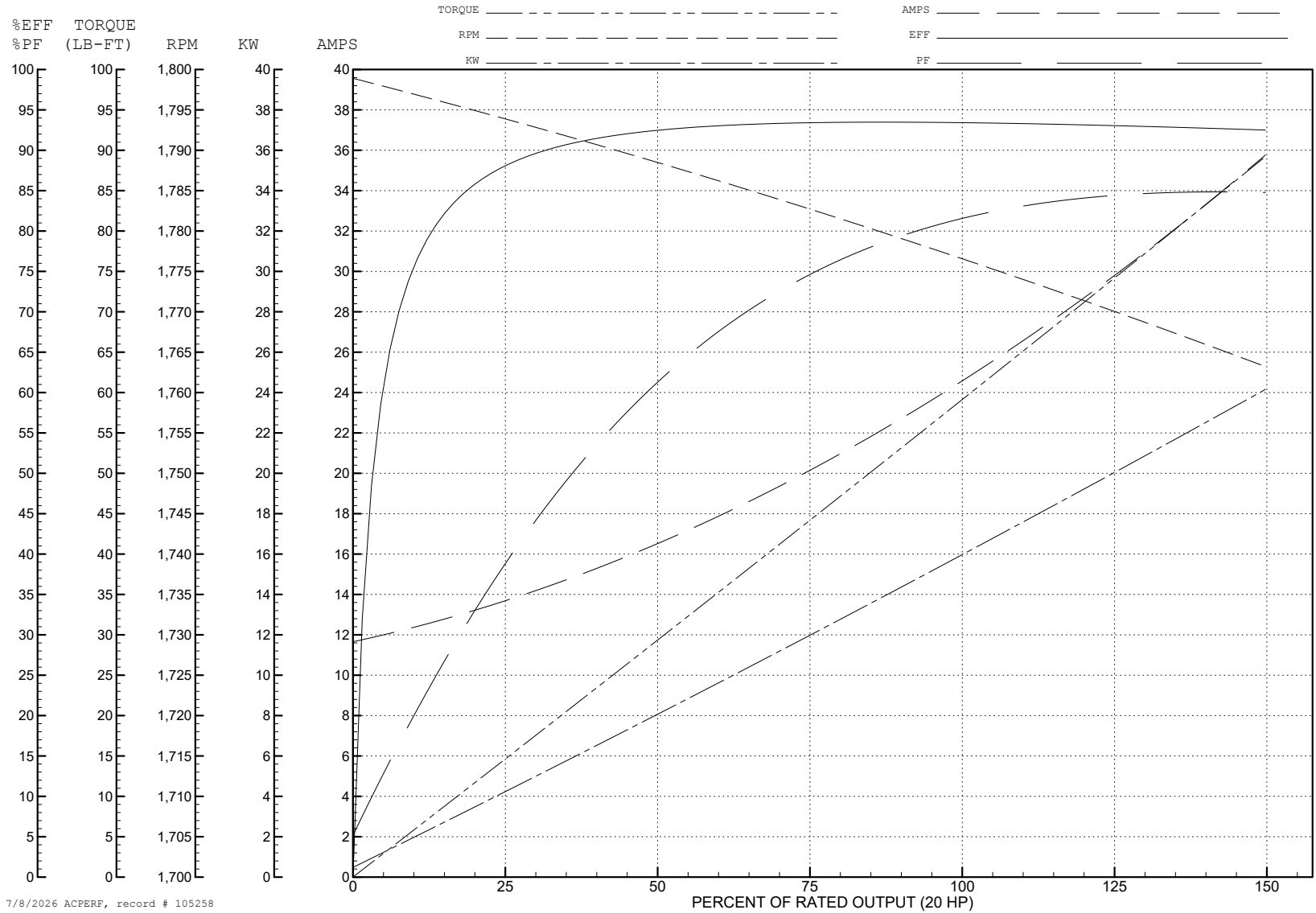
ABB Motors and Mechanical Inc.

WINDING # 39WGY464

Typical performance - not guaranteed values.

20 HP 3 PH 60 HZ 1776.8 RPM 460 V 3958M

TORQUES (LB-FT): PO=211 PU=130 LR=139 LRA=204



7/8/2026 ACPERF, record # 105258

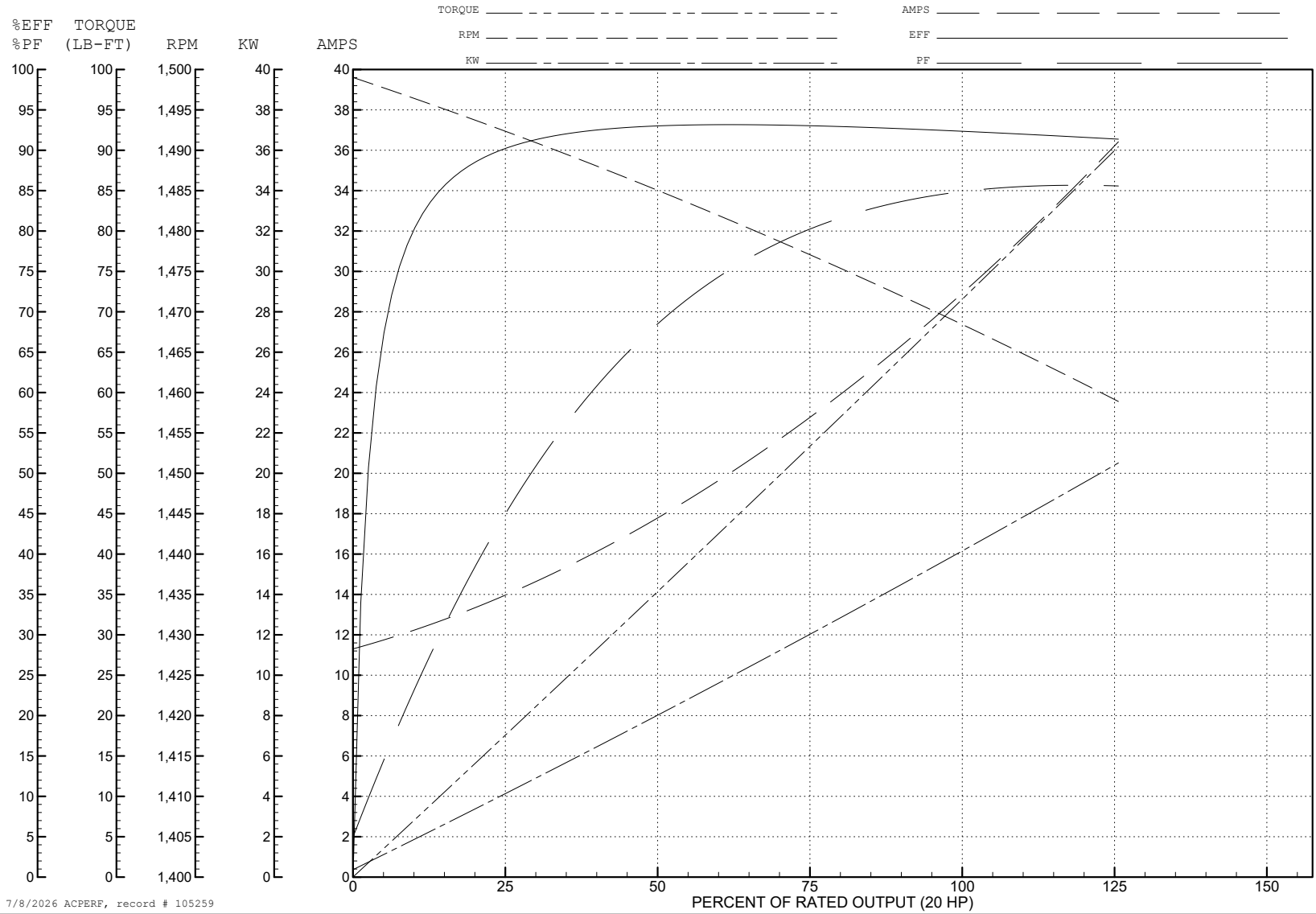
ABB Motors and Mechanical Inc.

WINDING # 39WGY464

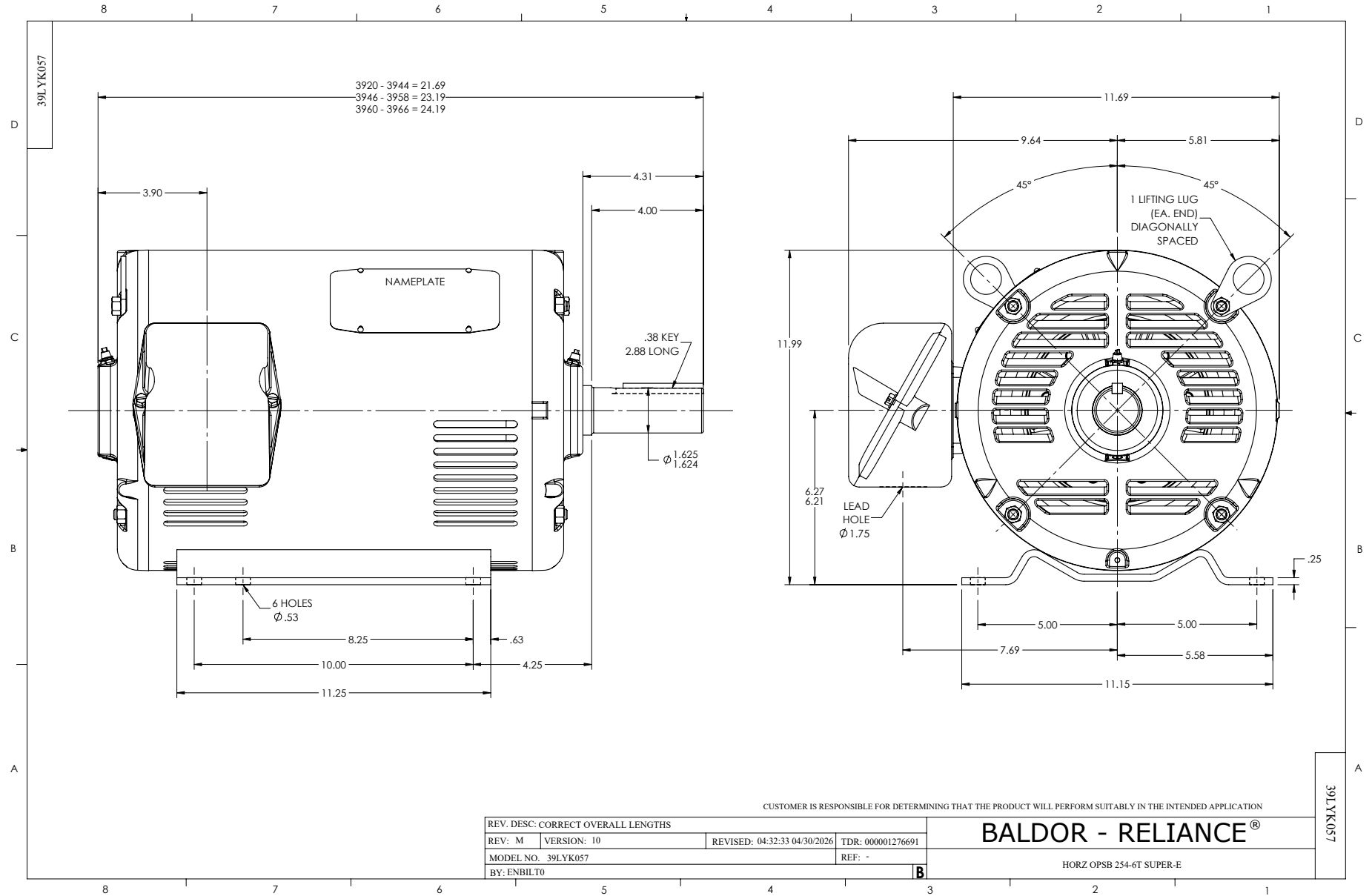
Typical performance - not guaranteed values.

20 HP 3 PH 50 HZ 1468.4 RPM 380 V 3958M

TORQUES (LB-FT): PO=217 PU=130 LR=136 LRA=197



7/8/2026 ACPERF, record # 105259



CD0180



LOW VOLTAGE
(2D)



HIGH VOLTAGE
(1D)



NOTES:

1. INTERCHANGE ANY TWO LINE LEADS TO REVERSE ROTATION.
2. OPTIONAL THERMOSTATS ARE PROVIDED WHEN SPECIFIED.
3. ACTUAL NUMBER OF INTERNAL PARALLEL CIRCUITS MAY BE A MULTIPLE OF THOSE SHOWN ABOVE.
4. LEAD COLORS ARE OPTIONAL. LEADS MUST ALWAYS BE NUMBERED AS SHOWN.

CD0180

REV. DESC: ADD CLASS CONN00000007		
REV. LTR: D	VERSION: 01	TDR: 000001099922
FILE: \AAA\00005\148	REVISED: 10: 25: 29 02/19/2019	BY: ENBRIRO
MTL: -	© □	

BALDOR - RELIANCE®

3PH, DV, 9 LEADS, DELTA CONNECTION

SH 1 of 1