

ABB BALDOR RELIANCE III

Customer information packet

GNEM2513T

15HP//11KW, 1770//1470 1/MINRPM, 3PH, 60//5

Class - None

Division - Not Applicable

Specifications

| | |
|---------------------------------------|---|
| Enclosure | OPSB |
| Frame | 254T |
| Frame Material | Steel |
| Frequency | 50.00 Hz 60.00 Hz |
| Haz Area Class and Group | None |
| Haz Area Division | Not Applicable |
| Motor Letter Type | Three Phase |
| Output @ Frequency | 11.000 KW @ 50 HZ 15.000 HP @ 60 HZ |
| Phase | 3 |
| Synchronous Speed @ Frequency | 1500 RPM @ 50 HZ |
| Voltage @ Frequency | 190.0 V @ 50 HZ 208.0 V @ 60 HZ 230.0 V @ 60 HZ 380.0 V @ 50 HZ 460.0 V @ 60 HZ |
| Agency Approvals | WEEE UKCA NEMA PREMIUM (OLD LOGO) NEMA PREMIUM IE3 CURUSEEV CURUS CE |
| Ambient Temperature | 40 °C |
| Auxiliary Box | NO AUXILLARY BOX |
| Auxiliary Box Lead Termination | None |
| Base Indicator | Rigid |
| Bearing Grease Type | Polyrex EM (-20F +300F) |
| Blower | None |
| Current @ Voltage | 44.000 A @ 190.0 V |

Part Detail

| | |
|---------------------|------------|
| Revision | H |
| Type | AC |
| Mech. spec. | 39K57 |
| Base | |
| Status | PRD/A |
| Elec. spec. | 39WGX952 |
| Layout | 39LYK057 |
| Eff. date | 12-12-2025 |
| CD Diagram | CD0180 |
| Poles | 04 |
| Leads | 9#10 |
| Proprietary | False |
| Created date | 04-12-2023 |

40.000 A @ 208.0 V

38.000 A @ 230.0 V

22.000 A @ 380.0 V

19.000 A @ 460.0 V

| | |
|--------------------------------------|---------------------------|
| Design Code | A |
| Drip Cover | No Drip Cover |
| Duty Rating | CONT |
| Efficiency @ 100% Load | 93.0 % |
| Electrically Isolated Bearing | Not Electrically Isolated |
| Feedback Device | NO FEEDBACK |
| Front Shaft Indicator | None |
| Heater Indicator | No Heater |
| High Voltage Full Load Amps | 19.0 a |
| Insulation Class | F |
| Inverter Code | Inverter Ready |
| KVA Code | K |
| Lifting Lugs | Standard Lifting Lugs |
| Locked Bearing Indicator | No Locked Bearing |
| Motor Lead Quantity/Wire Size | 9 @ 10 AWG |
| Motor Lead Termination | Flying Leads |
| Motor Standards | NEMA |
| Motor Type | 3948M |
| Mounting Arrangement | F1 |
| Number of Poles | 4 |
| Overall Length | 23.19 IN |
| Power Factor | 81 |
| Product Family | General Purpose |
| Pulley End Bearing Type | Ball |
| Pulley Face Code | Standard |
| Pulley Shaft Indicator | Standard |
| Rodent Screen | None |
| RoHS Status | ROHS COMPLIANT |
| Service Factor | 1.15 |
| Shaft Diameter | 1.625 IN |

| | |
|-----------------------------------|----------------------|
| Shaft Ground Indicator | No Shaft Grounding |
| Shaft Rotation | Reversible |
| Shaft Slinger Indicator | No Slinger |
| Speed | 1470 rpm 1770 rpm |
| Speed Code | Single Speed |
| Starting Method | Direct on line |
| Thermal Device - Bearing | None |
| Thermal Device - Winding | None |
| Vibration Sensor Indicator | No Vibration Sensor |
| Winding Thermal 1 | None |
| Winding Thermal 2 | None |

Nameplate

| NP4304L | | | | | | | | | |
|-----------------------|------------------------------|---------------|-----------------|-------------|------------|--------------|----|-----------|--|
| CAT.NO. | GNEM2513T | | | | | | | | |
| SPEC. | 39K057X952G2 | | | | | | | | |
| HP | 15HP/11KW | | | | PH | 3 | | | |
| VOLTS | 208-230/460//190/380 | | | | | | | | |
| AMPS | 40-38/19//44/22 | | | | | | | | |
| R.P.M. (1/MIN) | 1770//1470 | | | | WT. | 113KG | | KG | |
| FRAME | 254T | | HZ | 60//50 | | I.P. | 22 | | |
| SER.F. | 1.15 | CODE | K | DES. | A | CLASS | F | | |
| NOM.EFF. | 93.0//91.5 | | % (100%) | | | | | | |
| P.F. | 81 | IC01, 10:1 VT | | | | | | | |
| RATING | 40C AMB-S1 CONT | | | | CC | 010A | | | |
| DE | 6309 | | ODE | 6208 | | | | | |
| ENCL | OPSB | SN | | | | | | | |
| | IE3-50HZ 93.1(75%),92.9(50%) | | | | | | | | |
| | IE3-60HZ 93.0(75%),92.0(50%) | | | | | | | | |
| | SFA 44-42/21//50/25 | | | | | | | | |

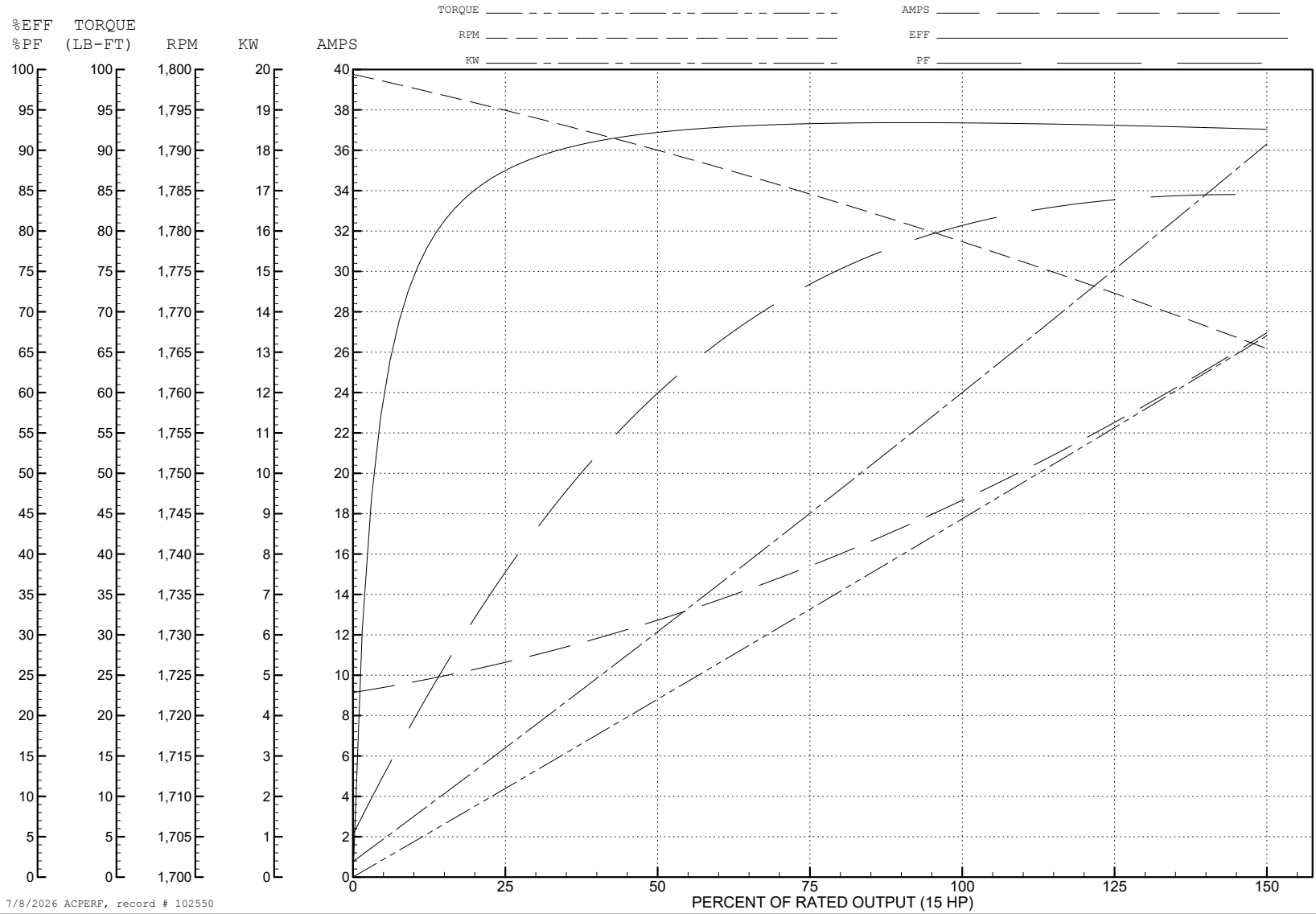
ABB Motors and Mechanical Inc.

WINDING # 39WGX952

Typical performance - not guaranteed values.

15 HP 3 PH 60 HZ 1778.8 RPM 460 V 3948M

TORQUES (LB-FT): PO=176 PU=94.8 LR=106 LRA=154



7/8/2026 ACPERF, record # 102550

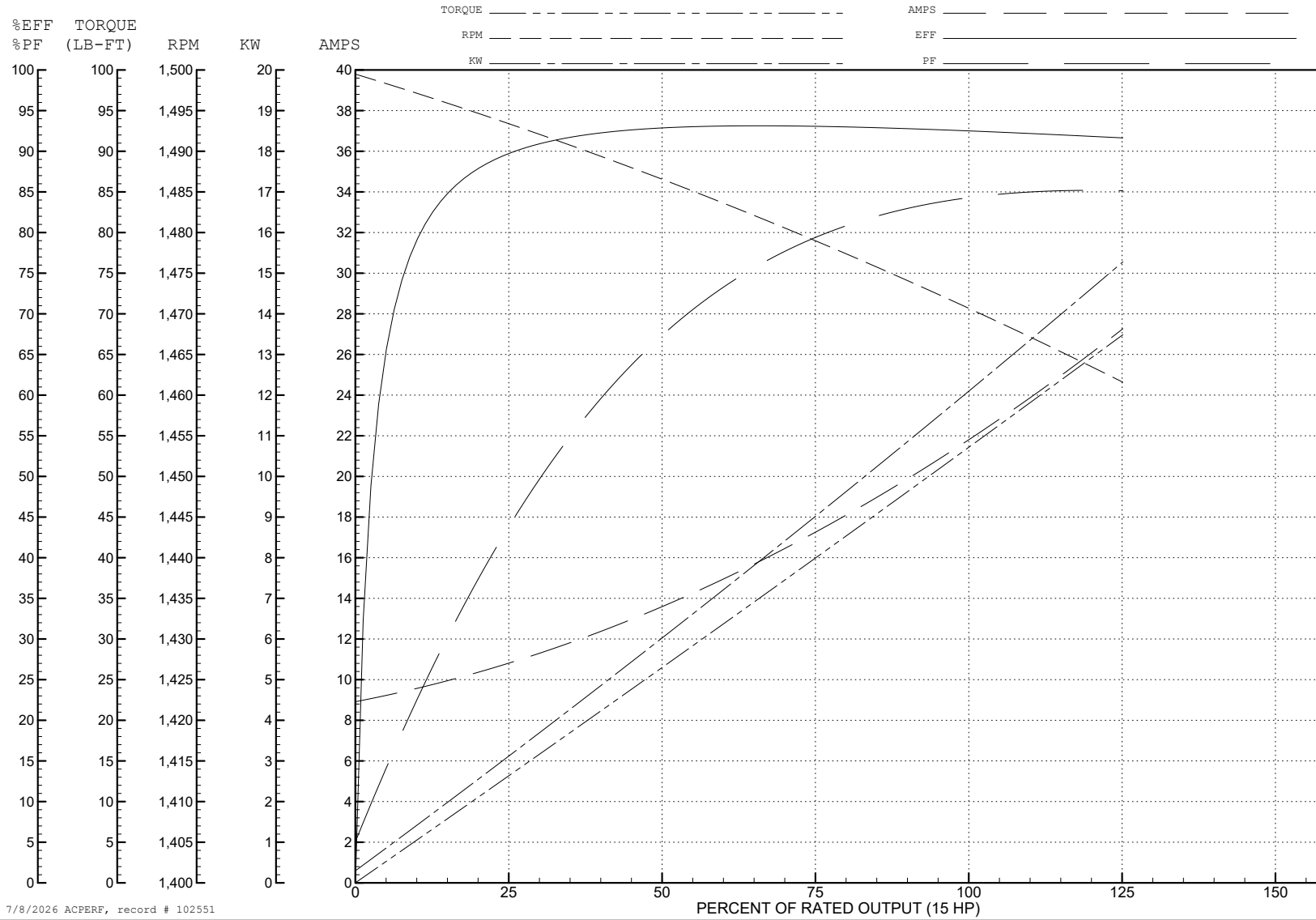
ABB Motors and Mechanical Inc.

WINDING # 39WGX952

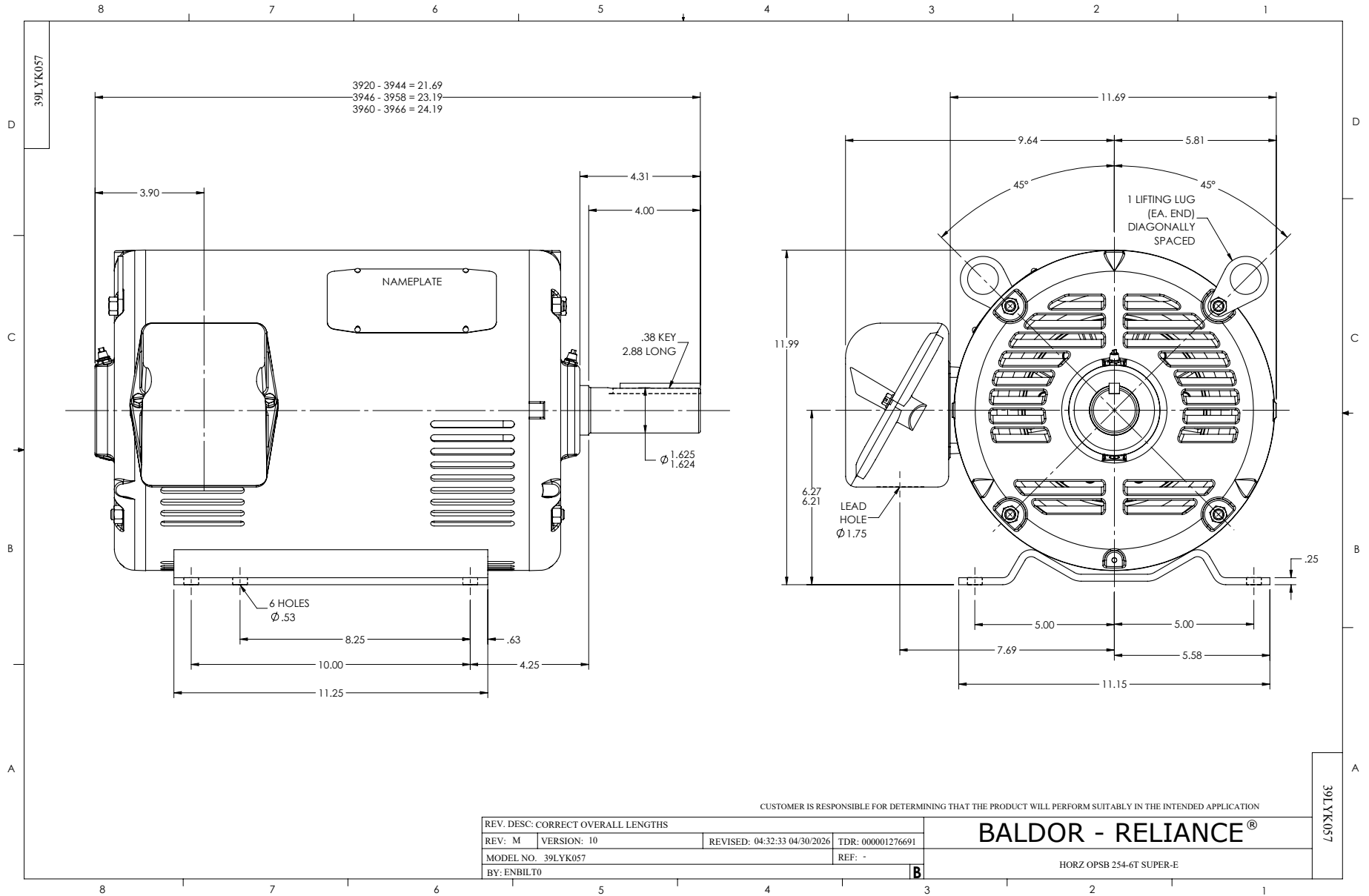
Typical performance - not guaranteed values.

15 HP 3 PH 50 HZ 1470.8 RPM 380 V 3948M

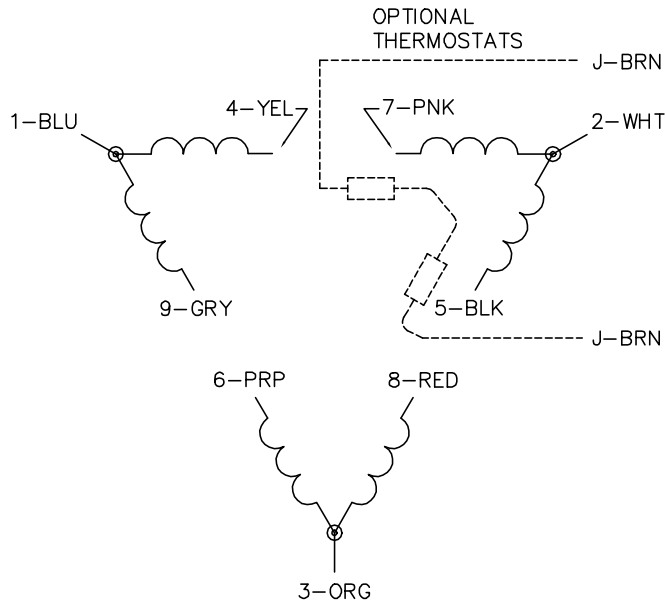
TORQUES (LB-FT): PO=174 PU=92.3 LR=103 LRA=150



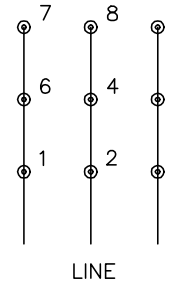
7/8/2026 ACPERF, record # 102551



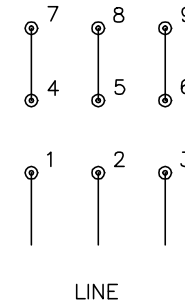
CD0180



LOW VOLTAGE
(2D)



HIGH VOLTAGE
(1D)



NOTES:

1. INTERCHANGE ANY TWO LINE LEADS TO REVERSE ROTATION.
2. OPTIONAL THERMOSTATS ARE PROVIDED WHEN SPECIFIED.
3. ACTUAL NUMBER OF INTERNAL PARALLEL CIRCUITS MAY BE A MULTIPLE OF THOSE SHOWN ABOVE.
4. LEAD COLORS ARE OPTIONAL. LEADS MUST ALWAYS BE NUMBERED AS SHOWN.

CD0180

| | | |
|-----------------------------------|--------------------------------|-------------------|
| REV. DESC: ADD CLASS CONN00000007 | | |
| REV. LTR: D | VERSION: 01 | TDR: 000001099922 |
| FILE: \AAA\00005\148 | REVISED: 10: 25: 29 02/19/2019 | BY: ENBRIRO |
| MTL: - | © □ | |

BALDOR - RELIANCE®

3PH, DV, 9 LEADS, DELTA CONNECTION

SH 1 of 1