

ABB BALDOR RELIANCE III

Customer information packet

GNEM2513T-G

15HP//11KW, 1770//1470 1/MINRPM, 3PH, 60//5

Class - None

Division - Not Applicable

Specifications

Enclosure	OPSB
Frame	254T
Frame Material	Steel
Frequency	50.00 Hz 60.00 Hz
Haz Area Class and Group	None
Haz Area Division	Not Applicable
Motor Letter Type	Three Phase
Output @ Frequency	15.000 HP @ 60 HZ 11.000 KW @ 50 HZ
Phase	3
Synchronous Speed @ Frequency	1800 RPM @ 60 HZ
Voltage @ Frequency	208.0 V @ 60 HZ 190.0 V @ 50 HZ 230.0 V @ 60 HZ 380.0 V @ 50 HZ 460.0 V @ 60 HZ
Agency Approvals	WEEE UKCA NEMA_PREMIUM NEMA PREMIUM IE3 CURUS CE
Ambient Temperature	40 °C
Auxiliary Box	NO AUXILLARY BOX
Auxiliary Box Lead Termination	None
Base Indicator	Rigid
Bearing Grease Type	Polyrex EM (-20F +300F)
Blower	None
Current @ Voltage	44.000 A @ 190.0 V 40.000 A @ 208.0 V

Part Detail

Revision	J
Type	AC
Mech. spec.	39E366
Base	
Status	PRD/A
Elec. spec.	39WGX952
Layout	39LYE366
Eff. date	02-11-2026
CD Diagram	CD0180
Poles	04
Leads	9#10
Proprietary	False
Created date	04-12-2023

38.000 A @ 230.0 V

22.000 A @ 380.0 V

19.000 A @ 460.0 V

Design Code	A
Drip Cover	No Drip Cover
Duty Rating	CONT
Efficiency @ 100% Load	93.0 %
Electrically Isolated Bearing	Not Electrically Isolated
Feedback Device	NO FEEDBACK
Front Shaft Indicator	None
Heater Indicator	No Heater
High Voltage Full Load Amps	19.0 a
Insulation Class	H
Inverter Code	Inverter Ready
KVA Code	K
Lifting Lugs	Standard Lifting Lugs
Locked Bearing Indicator	No Locked Bearing
Motor Lead Quantity/Wire Size	9 @ 10 AWG
Motor Lead Termination	Flying Leads
Motor Standards	NEMA
Motor Type	3948M
Mounting Arrangement	F1
Number of Poles	4
Overall Length	23.19 IN
Power Factor	81
Product Family	General Purpose
Pulley End Bearing Type	Ball
Pulley Face Code	Standard
Pulley Shaft Indicator	Standard
Rodent Screen	None
RoHS Status	ROHS COMPLIANT
Service Factor	1.15
Shaft Diameter	1.625 IN
Shaft Ground Indicator	Shaft Grounding

Shaft Rotation	Reversible
Shaft Slinger Indicator	No Slinger
Speed	1470 rpm 1770 rpm
Speed Code	Single Speed
Starting Method	Direct on line
Thermal Device - Bearing	None
Thermal Device - Winding	None
Vibration Sensor Indicator	No Vibration Sensor
Winding Thermal 1	None
Winding Thermal 2	None

Nameplate

NP4304L									
CAT.NO.	GNEM2513T-G								
SPEC.	39E366X952G4								
HP	15HP//11KW				PH	3			
VOLTS	208-230/460//190/380								
AMPS	40-38/19//44/22								
R.P.M. (1/MIN)	1770//1470				WT.	113KG		KG	
FRAME	254T		HZ	60//50		I.P.	22		
SER.F.	1.15	CODE	K	DES.	A	CLASS	H		
NOM.EFF.	93//91.5		% (100%)						
P.F.	81	IC01, 10:1 VT							
RATING	40C AMB-CONT				CC	010A			
DE	6309		ODE	6208					
ENCL	OPSB	SN							
	IE3-50HZ 93.1(75%),92.9(50%)								
	IE3-60HZ 93.0(75%),92.0 (50%)								
	SFA 44-42/21//50/25								

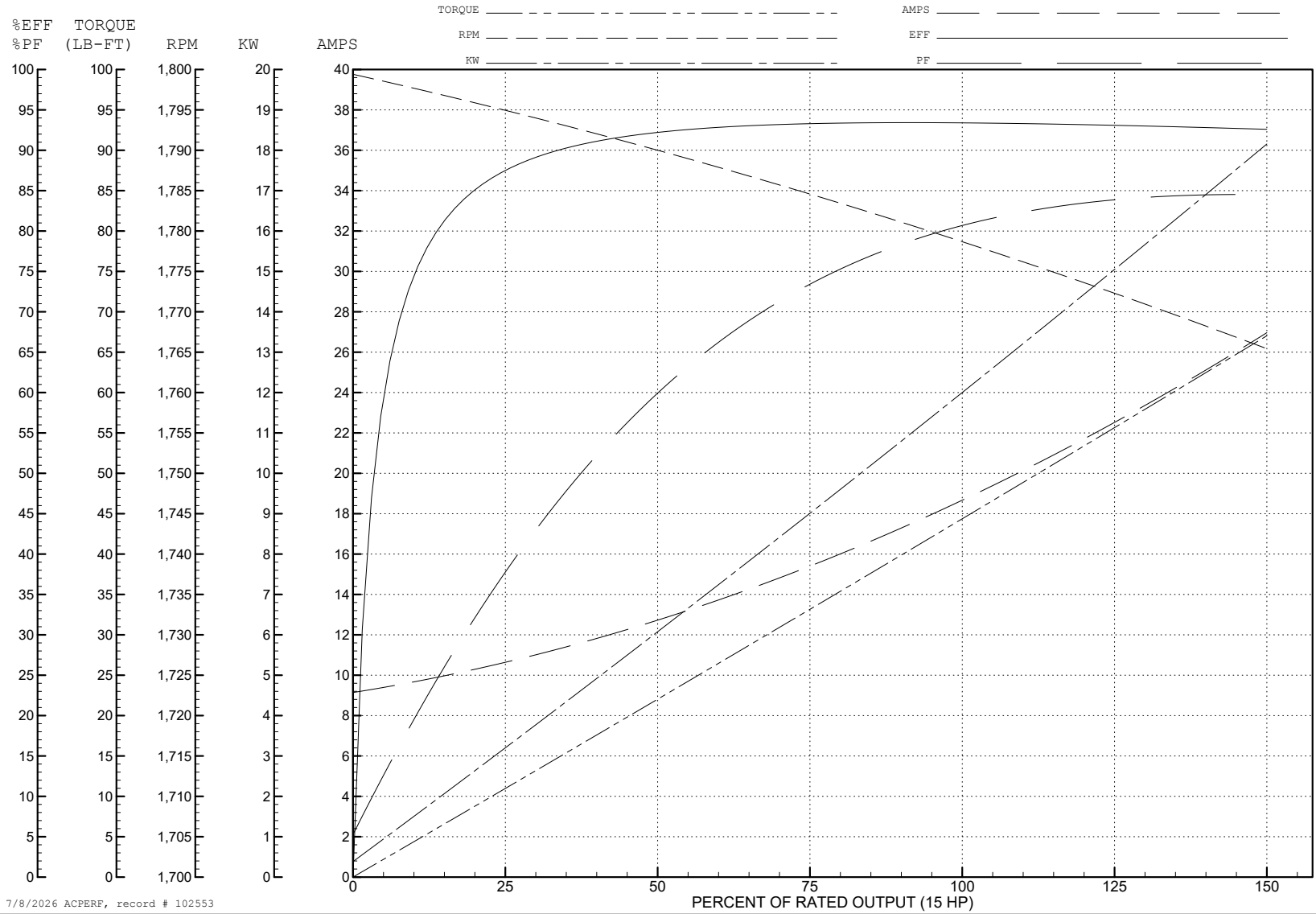
ABB Motors and Mechanical Inc.

WINDING # 39WGX952

Typical performance - not guaranteed values.

15 HP 3 PH 60 HZ 1778.8 RPM 460 V 3948M

TORQUES (LB-FT): PO=176 PU=94.8 LR=106 LRA=154



7/8/2026 ACPERF, record # 102553

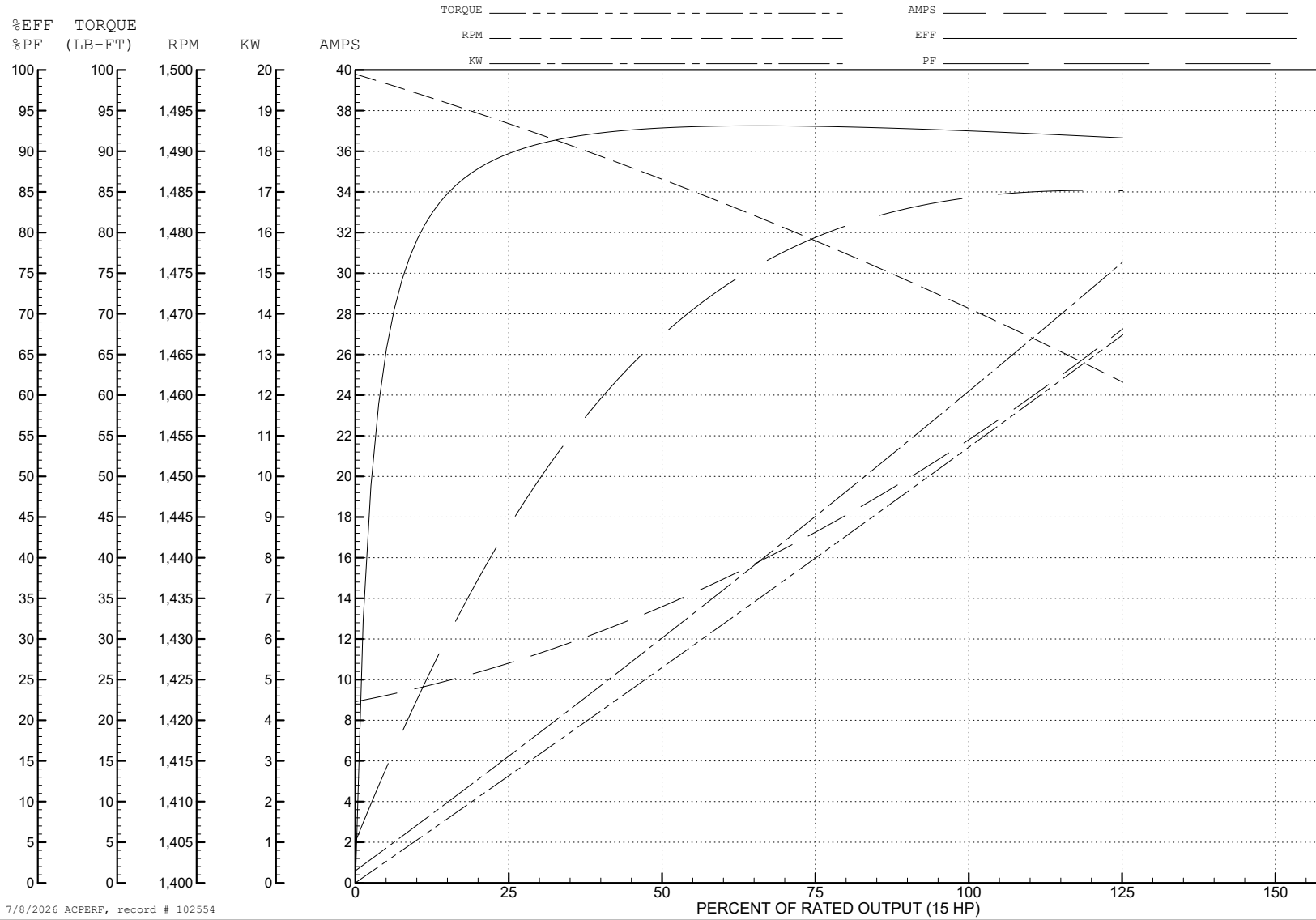
ABB Motors and Mechanical Inc.

WINDING # 39WGX952

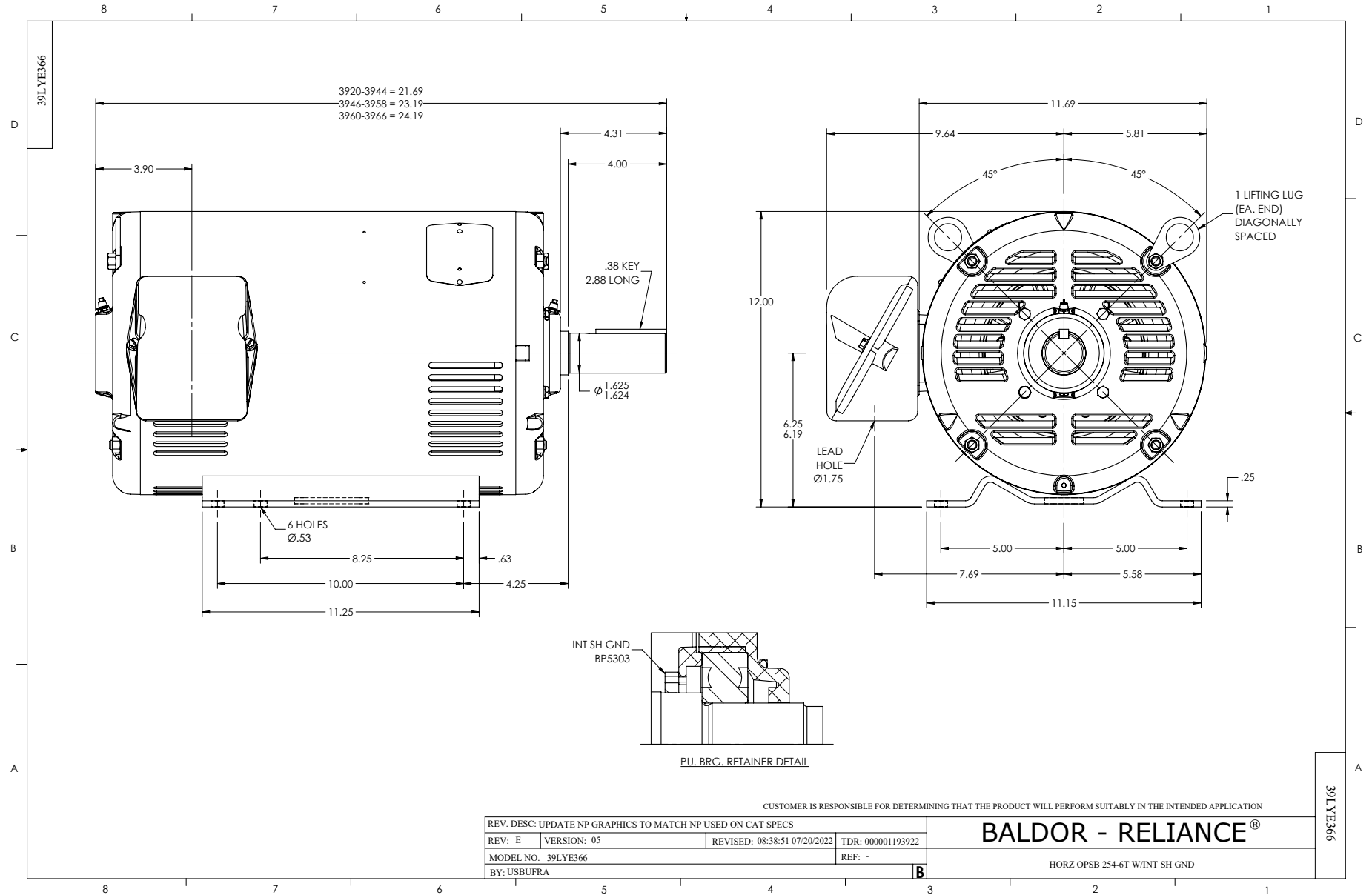
Typical performance - not guaranteed values.

15 HP 3 PH 50 HZ 1470.8 RPM 380 V 3948M

TORQUES (LB-FT): PO=174 PU=92.3 LR=103 LRA=150



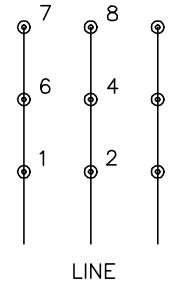
7/8/2026 ACPERF, record # 102554



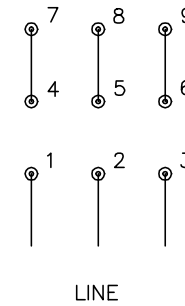
CD0180



LOW VOLTAGE
(2D)



HIGH VOLTAGE
(1D)



NOTES:

1. INTERCHANGE ANY TWO LINE LEADS TO REVERSE ROTATION.
2. OPTIONAL THERMOSTATS ARE PROVIDED WHEN SPECIFIED.
3. ACTUAL NUMBER OF INTERNAL PARALLEL CIRCUITS MAY BE A MULTIPLE OF THOSE SHOWN ABOVE.
4. LEAD COLORS ARE OPTIONAL. LEADS MUST ALWAYS BE NUMBERED AS SHOWN.

CD0180

REV. DESC: ADD CLASS CONN00000007		
REV. LTR: D	VERSION: 01	TDR: 000001099922
FILE: \AAA\00005\148	REVISED: 10: 25: 29 02/19/2019	BY: ENBRIRO
MTL: -	© □	

BALDOR - RELIANCE®

3PH, DV, 9 LEADS, DELTA CONNECTION

SH 1 of 1