



Customer information packet

GNEM2511T

10HP//7.5KW, 1180//980RPM, 3PH, 60//50HZ, 25

Class - None

Division - Not Applicable

Specifications

Enclosure	OPSB
Frame	254T
Frame Material	Steel
Frequency	50.00 Hz 60.00 Hz
Haz Area Class and Group	None
Haz Area Division	Not Applicable
Motor Letter Type	Three Phase
Output @ Frequency	7.500 KW @ 50 HZ 10.000 HP @ 60 HZ
Phase	3
Synchronous Speed @ Frequency	1000 RPM @ 50 HZ
Voltage @ Frequency	190.0 V @ 50 HZ 208.0 V @ 60 HZ 230.0 V @ 60 HZ 380.0 V @ 50 HZ 460.0 V @ 60 HZ
Agency Approvals	CE WEEE UKCA CURUSEEV IE3 NEMA PREMIUM
Ambient Temperature	40 °C
Auxillary Box	No Auxillary Box
Auxillary Box Lead Termination	None
Base Indicator	Rigid
Bearing Grease Type	Polyrex EM (-20F +300F)
Blower	None
Current @ Voltage	38.000 A @ 190.0 V 34.000 A @ 230.0 V 34.000 A @ 208.0 V 19.000 A @ 380.0 V

Part detail

Revision	B
Type	AC
Mech. spec.	39K57
Base	
Status	PRD/A
Elec. spec.	39WGY470
Layout	39LYK057
Eff. date	12-18-2024
CD Diagram	CD0180
Poles	06
Leads	9#12
Proprietary	False
Created date	04-23-2024

	17.000 A @ 460.0 V
Design Code	A
Drip Cover	No Drip Cover
Duty Rating	CONT
Efficiency @ 100% Load	91.0 %
Electrically Isolated Bearing	Not Electrically Isolated
Feedback Device	NO FEEDBACK
Front Shaft Indicator	None
Heater Indicator	No Heater
High Voltage Full Load Amps	17.0 a
Insulation Class	F
Inverter Code	Inverter Duty
KVA Code	M
Lifting Lugs	Standard Lifting Lugs
Locked Bearing Indicator	No Locked Bearing
Motor Lead Quantity/Wire Size	9 @ 12 AWG
Motor Lead Termination	Flying Leads
Motor Standards	NEMA
Motor Type	3966M
Mounting Arrangement	F1
Number of Poles	6
Overall Length	24.19 IN
Power Factor	61
Product Family	General Purpose
Pulley End Bearing Type	Ball
Pulley Face Code	Standard
Pulley Shaft Indicator	Standard
Rodent Screen	None
RoHS Status	ROHS COMPLIANT
Service Factor	1.15
Shaft Diameter	1.625 IN
Shaft Ground Indicator	No Shaft Grounding
Shaft Rotation	Reversible
Shaft Slinger Indicator	No Slinger

Speed	1180 rpm
	980 rpm
Speed Code	Single Speed
Starting Method	Direct on line
Thermal Device - Bearing	None
Thermal Device - Winding	None
Vibration Sensor Indicator	No Vibration Sensor
Winding Thermal 1	None
Winding Thermal 2	None

Nameplate

NP4304L

CAT.NO.	GNEM2511T						
SPEC.	39K057Y470G1						
HP	10HP//7.5KW	PH	3				
VOLTS	208-230/460//190/380						
AMPS	34/17//38/19						
R.P.M. (1/MIN)	1180//980				WT.	131KG	KG
FRAME	254T	HZ	60//50	I.P.	22		
SER.F.	1.15	CODE	M	DES.	A	CLASS	F
NOM.EFF.	91	% (100%)					
P.F.	61	IC01, 10:1 VT					
RATING	40C AMB-CONT			CC			
DE	6309	ODE	6208				
ENCL	OPSB	SN					
	IE3-50HZ 91.6(75%),89.9(50%)						
	IE3-60HZ 91.3(75%),88.8(50%)						

AC Induction Motor Performance Data

Record # 109785

Typical performance - not guaranteed values

Winding: 39WGY470-R001		Type: 3966M	Enclosure: OPSB		
Nameplate Data			460 V, 60 Hz: High Voltage Connection		
Rated Output (HP)	10HP//7.5KW		Full Load Torque	44.3 LB-FT	
Volts	208-230/460//190/380		Start Configuration	direct on line	
Full Load Amps	34/17//38/19		Breakdown Torque	164 LB-FT	
R.P.M.	1180//980		Pull-up Torque	91.4 LB-FT	
Hz	60//50	Phase	3	Locked-rotor Torque	116 LB-FT
NEMA Design Code	A	KVA Code	M	Starting Current	130 A
Service Factor (S.F.)	1.15		No-load Current	11.4 A	
NEMA Nom. Eff.	91	Power Factor	61	Line-line Res. @ 25°C	0.52532 Ω
Rating - Duty	40C AMB-CONT		Temp. Rise @ Rated Load	30°C	
S.F. Amps			Temp. Rise @ S.F. Load	34°C	
			Locked-rotor Power Factor	24.5	
			Rotor inertia	5.3 lb-ft ²	

Load Characteristics 460 V, 60 Hz, 10 HP

% of Rated Load	25	50	75	100	125	150	S.F.
Power Factor	25	41	53	61	66	70	64
Efficiency	80.2	87.9	90.3	91.2	91.3	91	91.3
Speed	1197.4	1194.4	1191.6	1189	1185.1	1181	1187
Line amperes	11.9	13.1	14.8	16.9	19.4	22.1	18.4

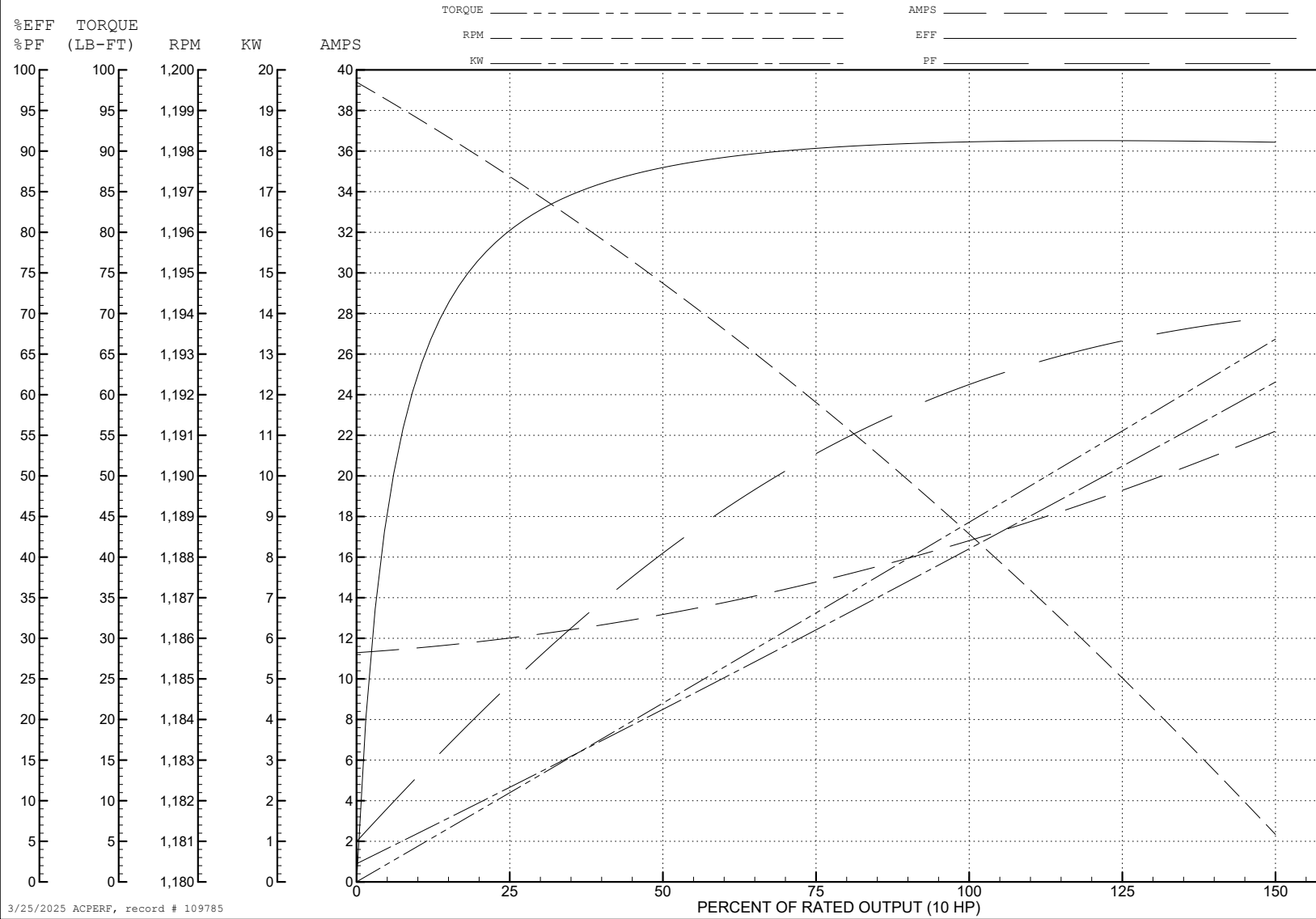
ABB Motors and Mechanical Inc.

WINDING # 39WGY470

Typical performance - not guaranteed values.

10 HP 3 PH 60 HZ 1189 RPM 460 V 3966M

TORQUES (LB-FT): PO=164 PU=91.4 LR=116 LRA=130



3/25/2025 ACPERF, record # 109785

AC Induction Motor Performance Data

Record # 109786

Typical performance - not guaranteed values

Winding: 39WGY470-R001		Type: 3966M	Enclosure: OPSB		
Nameplate Data			380 V, 50 Hz: High Voltage Connection		
Rated Output (KW)	10HP//7.5KW		Full Load Torque	53.75 LB-FT	
Volts	208-230/460//190/380		Start Configuration	direct on line	
Full Load Amps	34/17//38/19		Breakdown Torque	249 LB-FT	
R.P.M.	1180//980		Pull-up Torque	132 LB-FT	
Hz	60//50	Phase	3	Locked-rotor Torque	163 LB-FT
NEMA Design Code	A	KVA Code	M	Starting Current	147 A
Service Factor (S.F.)	1.15		No-load Current	11.1 A	
NEMA Nom. Eff.	91	Power Factor	61	Line-line Res. @ 25°C	0.53212 Ω
Rating - Duty	40C AMB-CONT		Temp. Rise @ Rated Load	34°C	
S.F. Amps			Temp. Rise @ S.F. Load	38°C	
			Locked-rotor Power Factor	27.4	
			Rotor inertia	5.3 lb-ft ²	

Load Characteristics 380 V, 50 Hz, 7.5 KW

% of Rated Load	25	50	75	100	125	150	S.F.
Power Factor	29	47	59	66	69	71	68
Efficiency	82.6	88.8	90.3	90.4	90.2	89.9	90.3
Speed	996.1	992.2	988	983.5	980.5	978.5	982
Line amperes	12	13.7	16.1	19	21	22.4	20.2

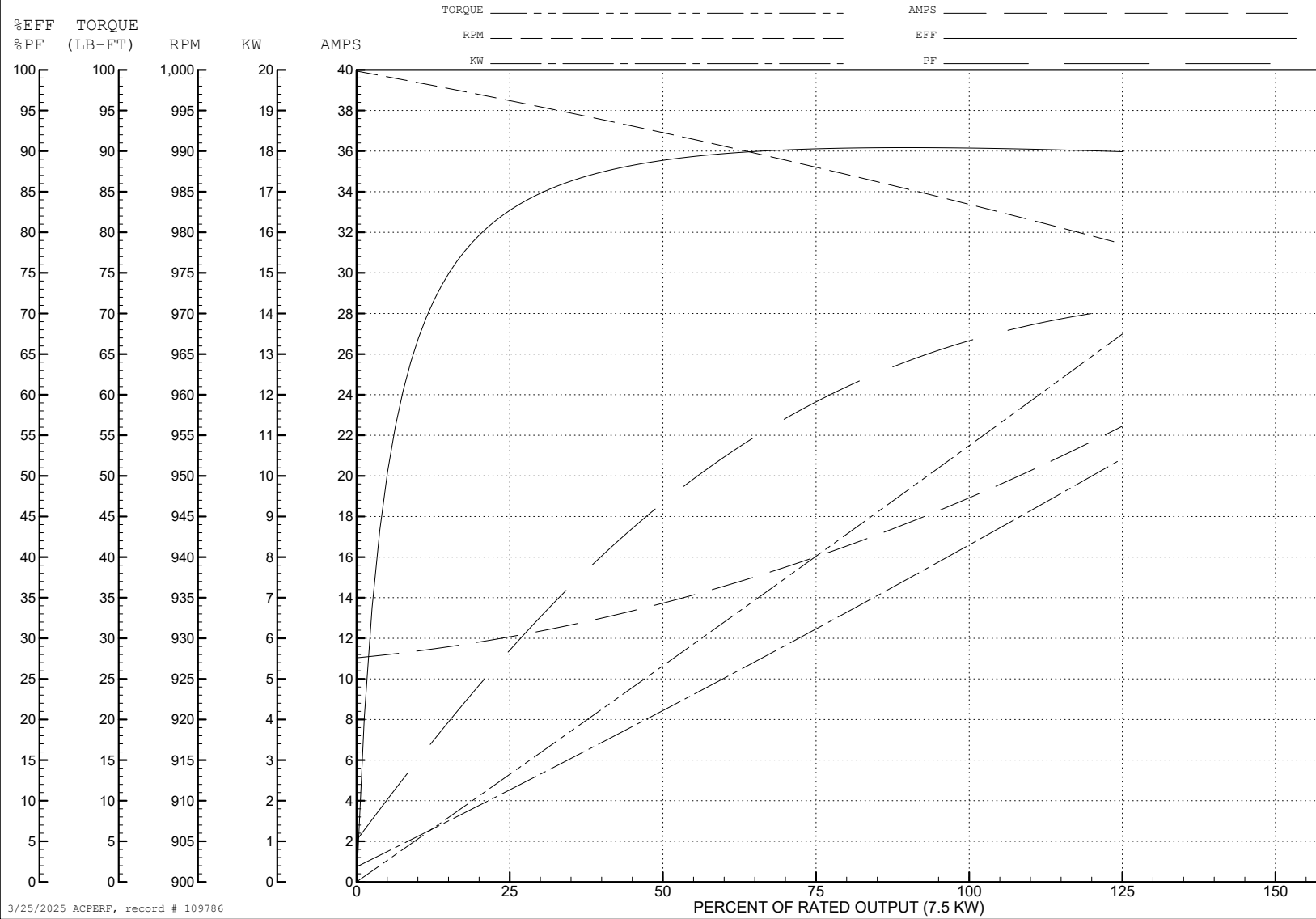
ABB Motors and Mechanical Inc.

WINDING # 39WGY470

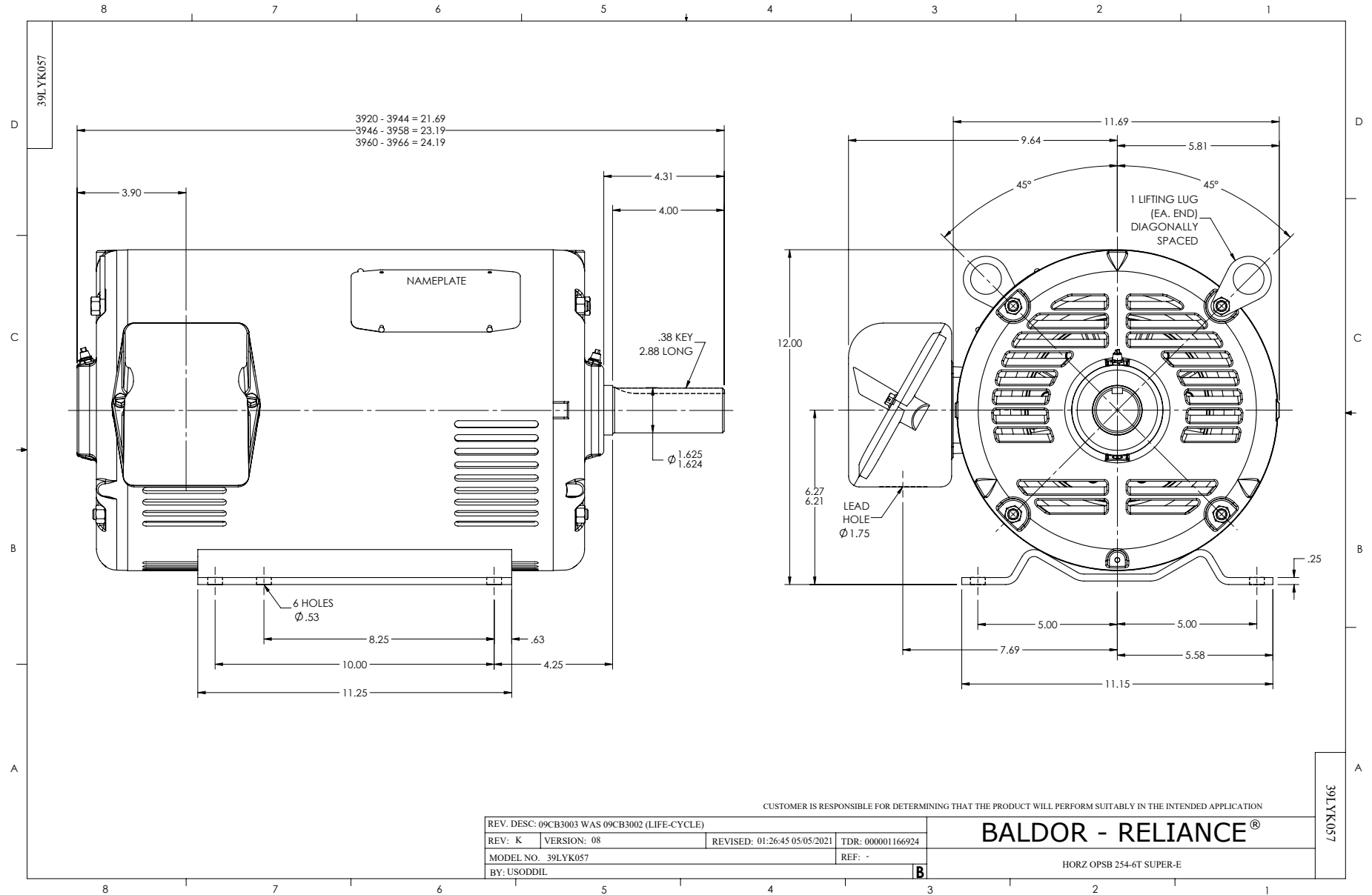
7.5 KW 3 PH 50 HZ 983.5 RPM 380 V 3966M

Typical performance - not guaranteed values.

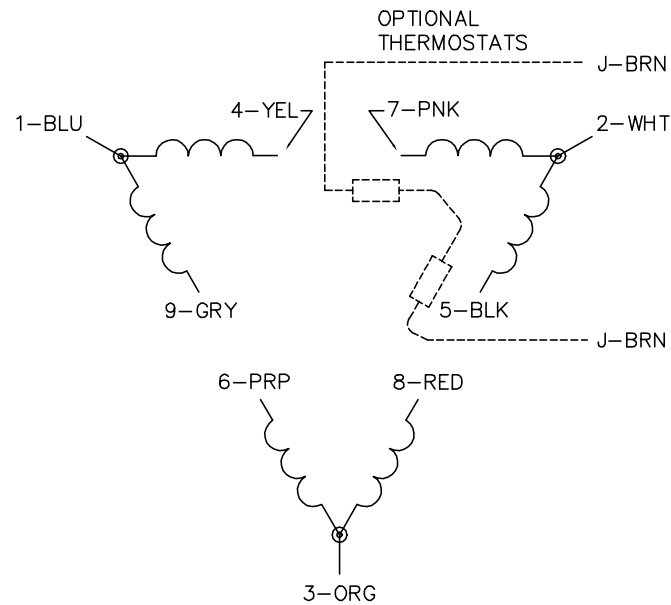
TORQUES (LB-FT): PO=249 PU=132 LR=163 LRA=147



3/25/2025 ACPERF, record # 109786



CD0180



LOW VOLTAGE
(2D)



HIGH VOLTAGE
(1D)



NOTES:

1. INTERCHANGE ANY TWO LINE LEADS TO REVERSE ROTATION.
2. OPTIONAL THERMOSTATS ARE PROVIDED WHEN SPECIFIED.
3. ACTUAL NUMBER OF INTERNAL PARALLEL CIRCUITS MAY BE A MULTIPLE OF THOSE SHOWN ABOVE.
4. LEAD COLORS ARE OPTIONAL. LEADS MUST ALWAYS BE NUMBERED AS SHOWN.

CD0180

REV. DESC: ADD CLASS CONN00000007		
REV. LTR: D	VERSION: 01	TDR: 000001099922
FILE: \AAA\00005\148	REVISED: 10: 25: 29 02/19/2019	BY: ENBRIRO
MTL: -	© □	

BALDOR - RELIANCE®

3PH, DV, 9 LEADS, DELTA CONNECTION

SH 1 of 1