

ABB BALDOR RELIANCE III

Customer information packet

GNEM2511T-G

10HP//7.5KW, 1180//980RPM, 3PH, 60//50HZ, 25

Class - None

Division - Not Applicable

Specifications

Enclosure	OPSB
Frame	256T
Frame Material	Steel
Frequency	50.00 Hz 60.00 Hz
Haz Area Class and Group	None
Haz Area Division	Not Applicable
Motor Letter Type	Three Phase
Output @ Frequency	7.500 KW @ 50 HZ 10.000 HP @ 60 HZ
Phase	3
Synchronous Speed @ Frequency	1200 RPM @ 60 HZ
Voltage @ Frequency	190.0 V @ 50 HZ 208.0 V @ 60 HZ 230.0 V @ 60 HZ 380.0 V @ 50 HZ 460.0 V @ 60 HZ
Agency Approvals	CE WEEE UKCA CURUSEEV IE3 NEMA PREMIUM
Ambient Temperature	40 °C
Auxiliary Box	NO AUXILLARY BOX
Auxiliary Box Lead Termination	None
Base Indicator	Rigid
Bearing Grease Type	Polyrex EM (-20F +300F)
Blower	None
Current @ Voltage	36.000 A @ 190.0 V 31.000 A @ 230.0 V 31.000 A @ 208.0 V

Part Detail

Revision	F
Type	AC
Mech. spec.	39E366
Base	
Status	PRD/A
Elec. spec.	39WGX503
Layout	39LYE366
Eff. date	02-11-2026
CD Diagram	CD0180
Poles	06
Leads	9#12
Proprietary	False
Created date	09-08-2023

	18.000 A @ 380.0 V
	15.500 A @ 460.0 V
Design Code	A
Drip Cover	No Drip Cover
Duty Rating	CONT
Efficiency @ 100% Load	91.7 %
Electrically Isolated Bearing	Not Electrically Isolated
Feedback Device	NO FEEDBACK
Front Shaft Indicator	None
Heater Indicator	No Heater
High Voltage Full Load Amps	15.5 a
Insulation Class	F
Inverter Code	Inverter Duty
KVA Code	K
Lifting Lugs	Standard Lifting Lugs
Locked Bearing Indicator	No Locked Bearing
Motor Lead Quantity/Wire Size	9 @ 12 AWG
Motor Lead Termination	Flying Leads
Motor Standards	NEMA
Motor Type	3960M
Mounting Arrangement	F1
Number of Poles	6
Overall Length	24.19 IN
Power Factor	66
Product Family	General Purpose
Pulley End Bearing Type	Ball
Pulley Face Code	Standard
Pulley Shaft Indicator	Standard
Rodent Screen	None
RoHS Status	ROHS COMPLIANT
Service Factor	1.15
Shaft Diameter	1.625 IN
Shaft Ground Indicator	Shaft Grounding
Shaft Rotation	Reversible

Shaft Slinger Indicator	No Slinger
Speed	1180 rpm 980 rpm
Speed Code	Single Speed
Starting Method	Direct on line
Thermal Device - Bearing	None
Thermal Device - Winding	None
Vibration Sensor Indicator	No Vibration Sensor
Winding Thermal 1	None
Winding Thermal 2	None

Nameplate

NP4304L										
CAT.NO.	GNEM2511T-G									
SPEC.	39E366X503G1									
HP	10HP//7.5KW						PH	3		
VOLTS	208-230/460//190/380									
AMPS	31/15.5//36/18									
R.P.M. (1/MIN)	1180//980						WT.	131KG		KG
FRAME	256T		HZ	60//50			I.P.	22		
SER.F.	1.15	CODE	K	DES.	A	CLASS	H			
NOM.EFF.	91.7		% (100%)							
P.F.	66	IC01, 10:1 VT								
RATING	40C AMB-CONT				CC	010A				
DE	6309		ODE	6208						
ENCL	OPSB	SN								
	IE3-50HZ 91.6(75%),90.2(50%)									
	IE3-60HZ 88.8(75%),85.6(50%)									

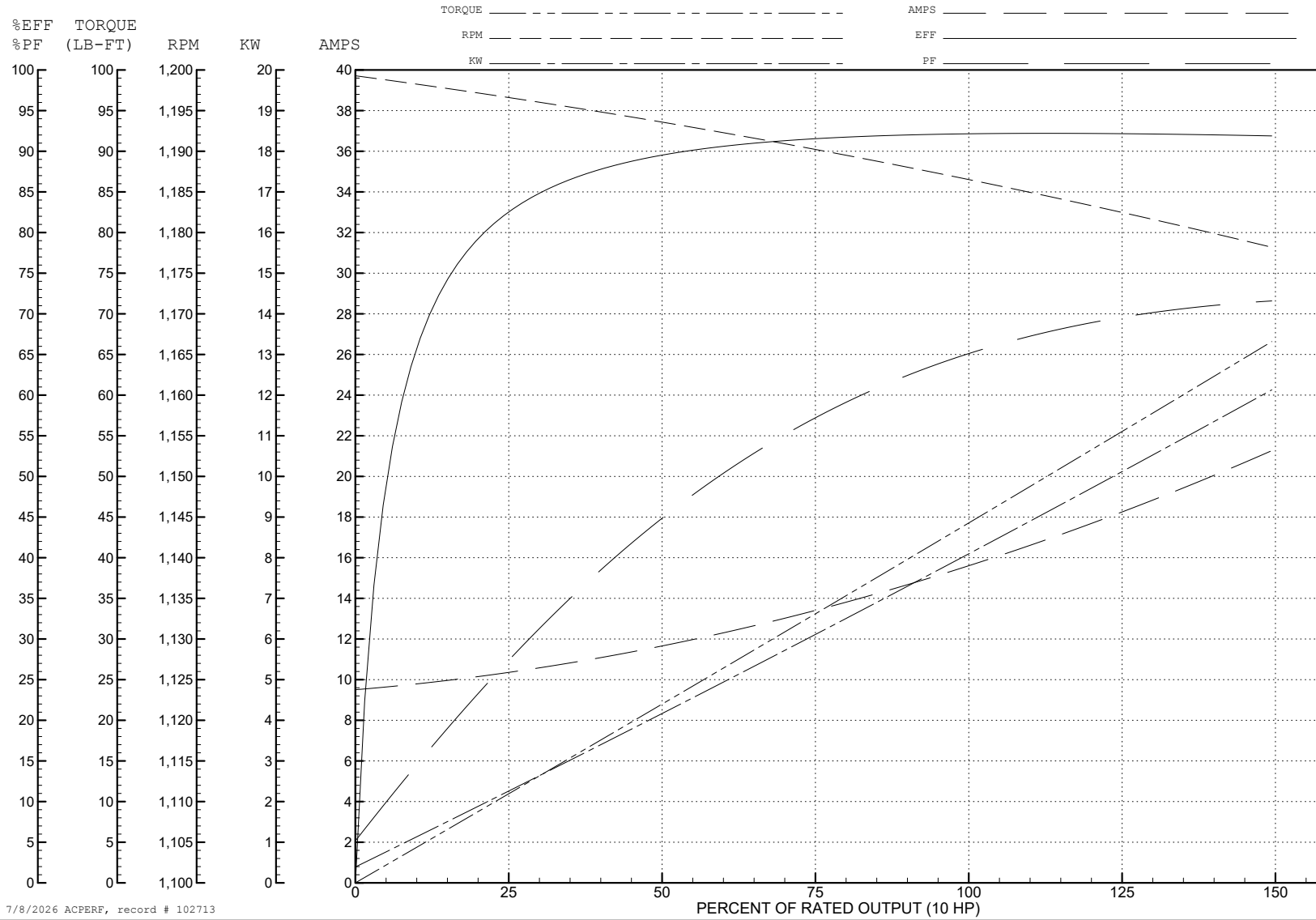
ABB Motors and Mechanical Inc.

WINDING # 39WGX503

Typical performance - not guaranteed values.

10 HP 3 PH 60 HZ 1186 RPM 460 V 3960M

TORQUES (LB-FT): PO=182 PU=66.74 LR=81.3 LRA=112



7/8/2026 ACPERF, record # 102713

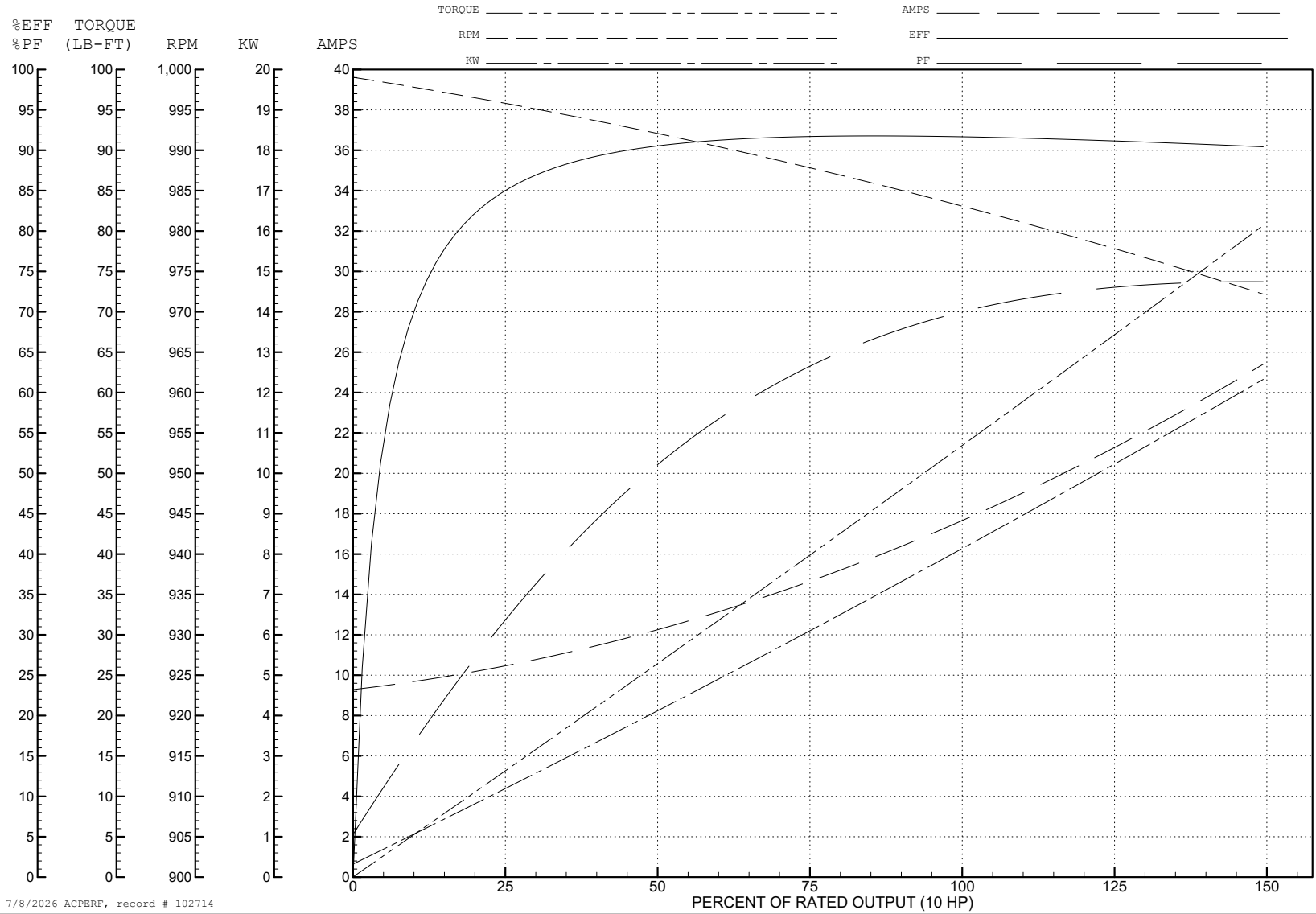
ABB Motors and Mechanical Inc.

WINDING # 39WGX503

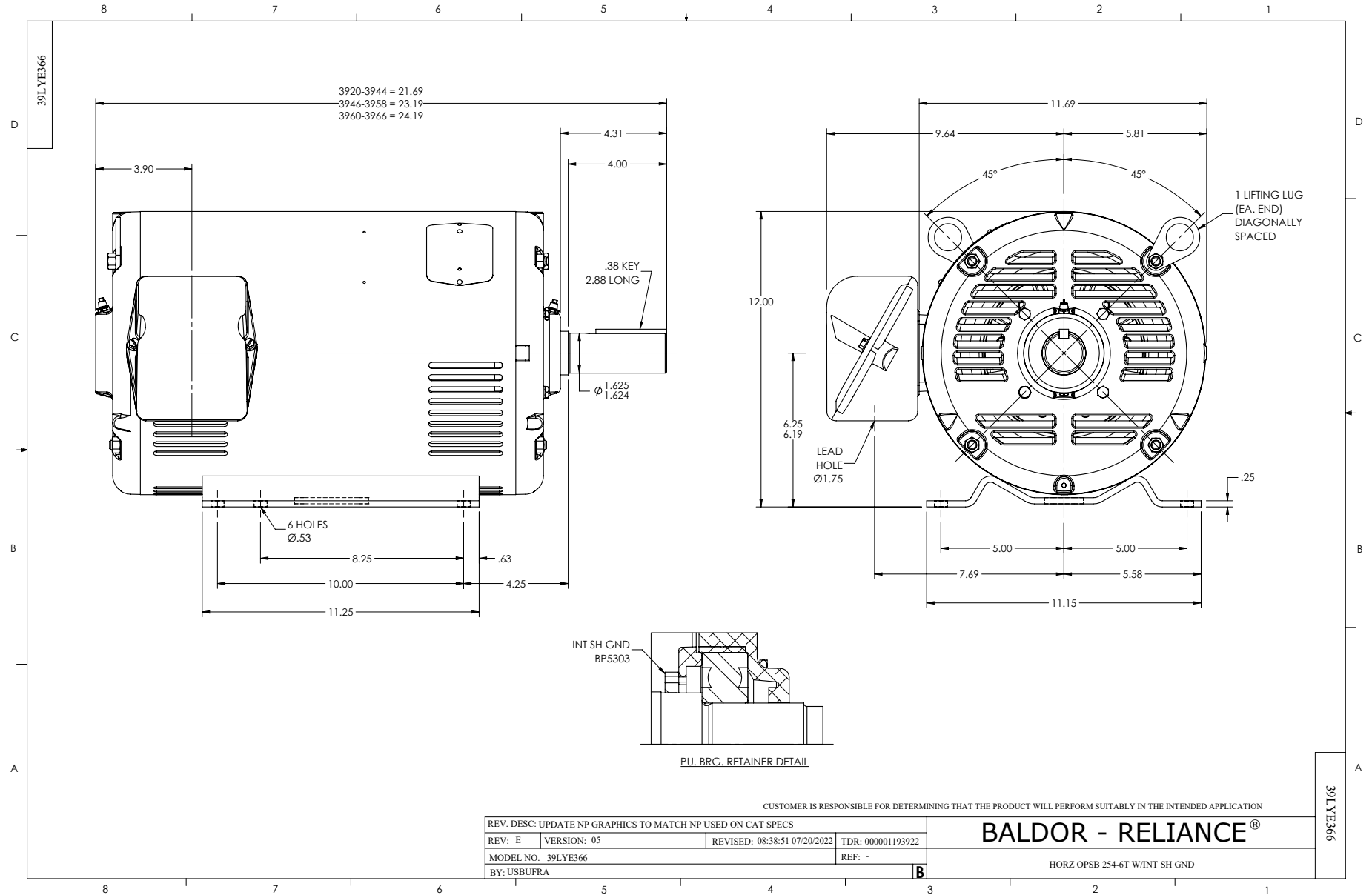
10 HP 3 PH 50 HZ 983 RPM 380 V 3960M

Typical performance - not guaranteed values.

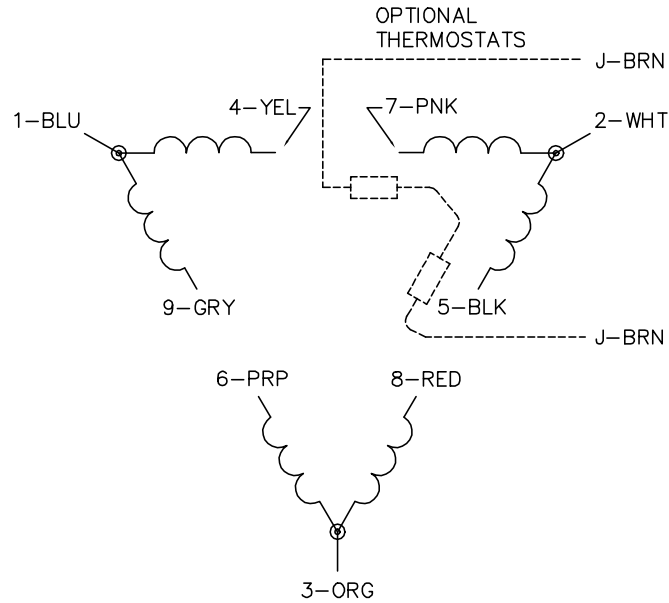
TORQUES (LB-FT): PO=176 PU=70.2 LR=85.5 LRA=110



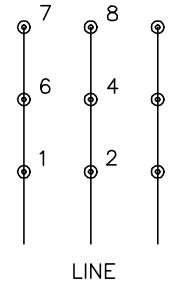
7/8/2026 ACPERF, record # 102714



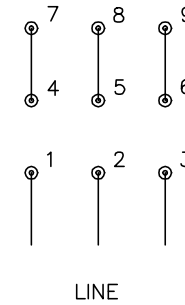
CD0180



LOW VOLTAGE
(2D)



HIGH VOLTAGE
(1D)



NOTES:

1. INTERCHANGE ANY TWO LINE LEADS TO REVERSE ROTATION.
2. OPTIONAL THERMOSTATS ARE PROVIDED WHEN SPECIFIED.
3. ACTUAL NUMBER OF INTERNAL PARALLEL CIRCUITS MAY BE A MULTIPLE OF THOSE SHOWN ABOVE.
4. LEAD COLORS ARE OPTIONAL. LEADS MUST ALWAYS BE NUMBERED AS SHOWN.

CD0180

REV. DESC: ADD CLASS CONN00000007		
REV. LTR: D	VERSION: 01	TDR: 000001099922
FILE: \AAA\00005\148	REVISED: 10:25:29 02/19/2019	BY: ENBRIRO
MTL: -	© □	

BALDOR - RELIANCE®

3PH, DV, 9 LEADS, DELTA CONNECTION

SH 1 of 1