

ABB BALDOR RELIANCE III

Customer information packet

GNEM2333T-G

15HP//11KW, 1770//1465 1/MINRPM, 3PH, 60//

Class - None

Division - Not Applicable

Specifications

Enclosure	TEFC
Frame	254T
Frame Material	Iron
Frequency	50.00 Hz 60.00 Hz
Haz Area Class and Group	None
Haz Area Division	Not Applicable
Motor Letter Type	Three Phase
Output @ Frequency	15.000 HP @ 50 HZ 15.000 HP @ 60 HZ
Phase	3
Synchronous Speed @ Frequency	1800 RPM @ 60 HZ
Voltage @ Frequency	380.0 V @ 50 HZ 230.0 V @ 60 HZ 208.0 V @ 60 HZ 460.0 V @ 60 HZ 190.0 V @ 50 HZ
Agency Approvals	WEEE UR IE3 CSA CE
Ambient Temperature	40 °C
Auxiliary Box	NO AUXILLARY BOX
Auxiliary Box Lead Termination	None
Base Indicator	Rigid
Bearing Grease Type	Polyrex EM (-20F +300F)
Blower	None
Current @ Voltage	44.000 A @ 190.0 V 38.000 A @ 208.0 V 36.800 A @ 230.0 V 22.000 A @ 380.0 V

Part Detail

Revision	G
Type	AC
Mech. spec.	09J359
Base	
Status	PRD/A
Elec. spec.	09WGT342
Layout	09LYJ359
Eff. date	03-12-2026
CD Diagram	CD0005
Poles	04
Leads	9#12
Proprietary	False
Created date	04-12-2023

	18.400 A @ 460.0 V
Design Code	A
Drip Cover	No Drip Cover
Duty Rating	CONT
Efficiency @ 100% Load	92.4 %
Electrically Isolated Bearing	Not Electrically Isolated
Feedback Device	NO FEEDBACK
Front Shaft Indicator	None
Heater Indicator	No Heater
High Voltage Full Load Amps	18.4 a
Insulation Class	H
Inverter Code	Inverter Ready
KVA Code	J
Lifting Lugs	Standard Lifting Lugs
Locked Bearing Indicator	Locked Bearing
Motor Lead Quantity/Wire Size	9 @ 12 AWG
Motor Lead Termination	Flying Leads
Motor Standards	NEMA
Motor Type	0948M
Mounting Arrangement	F1
Number of Poles	4
Overall Length	23.36 IN
Power Factor	85
Product Family	General Purpose
Pulley End Bearing Type	Ball
Pulley Face Code	Standard
Pulley Shaft Indicator	Standard
Rodent Screen	None
RoHS Status	ROHS COMPLIANT
Service Factor	1.15
Shaft Diameter	1.625 IN
Shaft Ground Indicator	Shaft Grounding
Shaft Rotation	Reversible
Shaft Slinger Indicator	Shaft Slinger

Speed	1465 rpm 1770 rpm
Speed Code	Single Speed
Starting Method	Direct on line
Thermal Device - Bearing	None
Thermal Device - Winding	None
Vibration Sensor Indicator	No Vibration Sensor
Winding Thermal 1	None
Winding Thermal 2	None

Nameplate

NP4304L										
CAT.NO.	GNEM2333T-G									
SPEC.	09J359T342G1									
HP	15HP//11KW				PH	3				
VOLTS	208-230/460//190/380									
AMPS	38-36.8/18.4//44/22									
R.P.M. (1/MIN)	1770//1465				WT.	130KG	KG			
FRAME	254T	HZ	60//50		I.P.	44				
SER.F.	1.15	CODE	J	DES.	A	CLASS	H			
NOM.EFF.	92.4	% (100%)								
P.F.	85	IC411, 10:1 VT								
RATING	40C AMB-CONT			CC	010A					
DE	6309	ODE	6208							
ENCL	TEFC	SN								
	SFA 44-42/21//50/25									
	IE3-50HZ 93.3(75%),93.2(50%)									
	IE3-60HZ 93.4(75%),92.6(50%)									

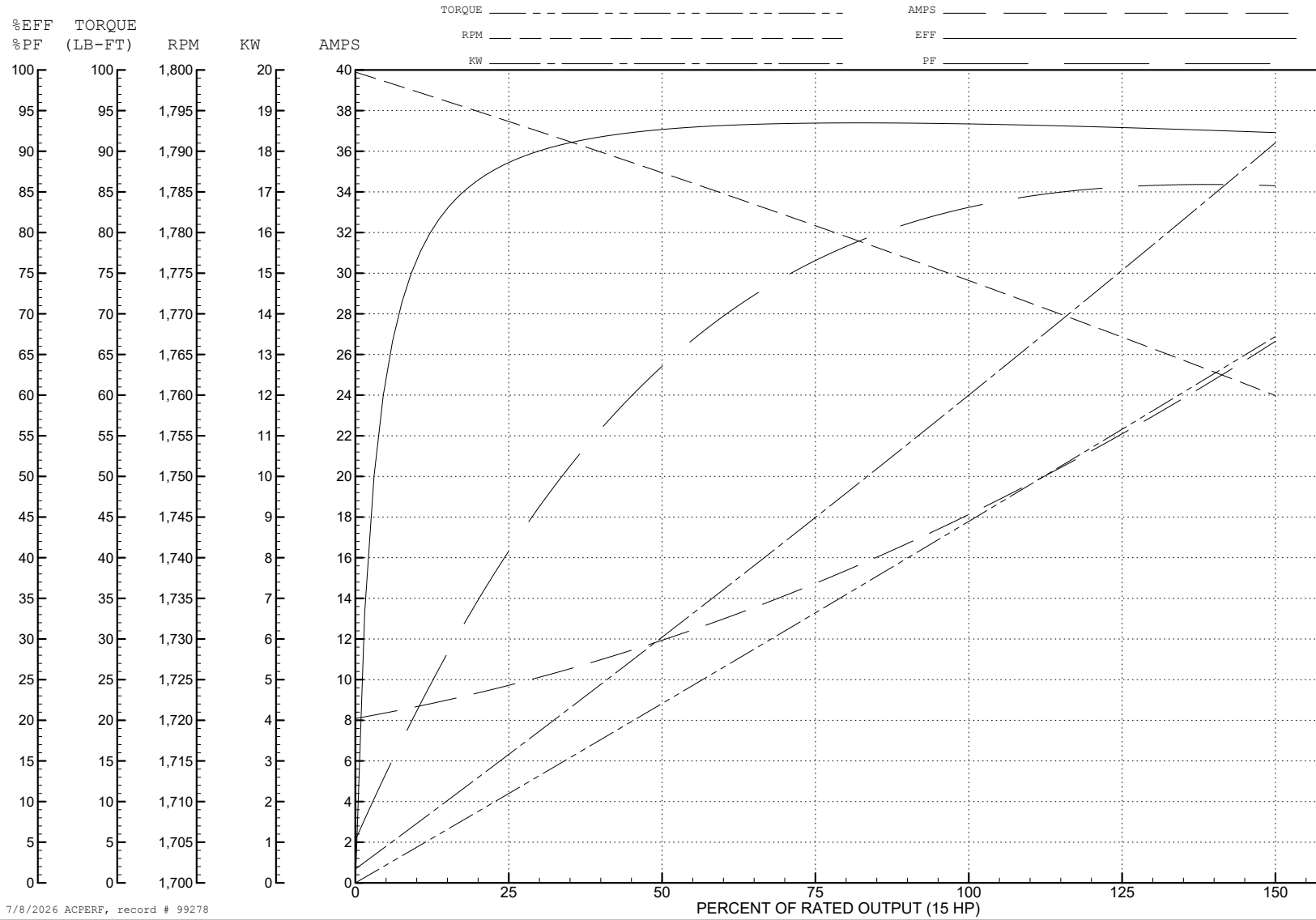
ABB Motors and Mechanical Inc.

WINDING # 09WGT342

Typical performance - not guaranteed values.

15 HP 3 PH 60 HZ 1773.7 RPM 460 V 0948M

TORQUES (LB-FT): PO=173 PU=87.8 LR=101 LRA=147



7/8/2026 ACPERF, record # 99278

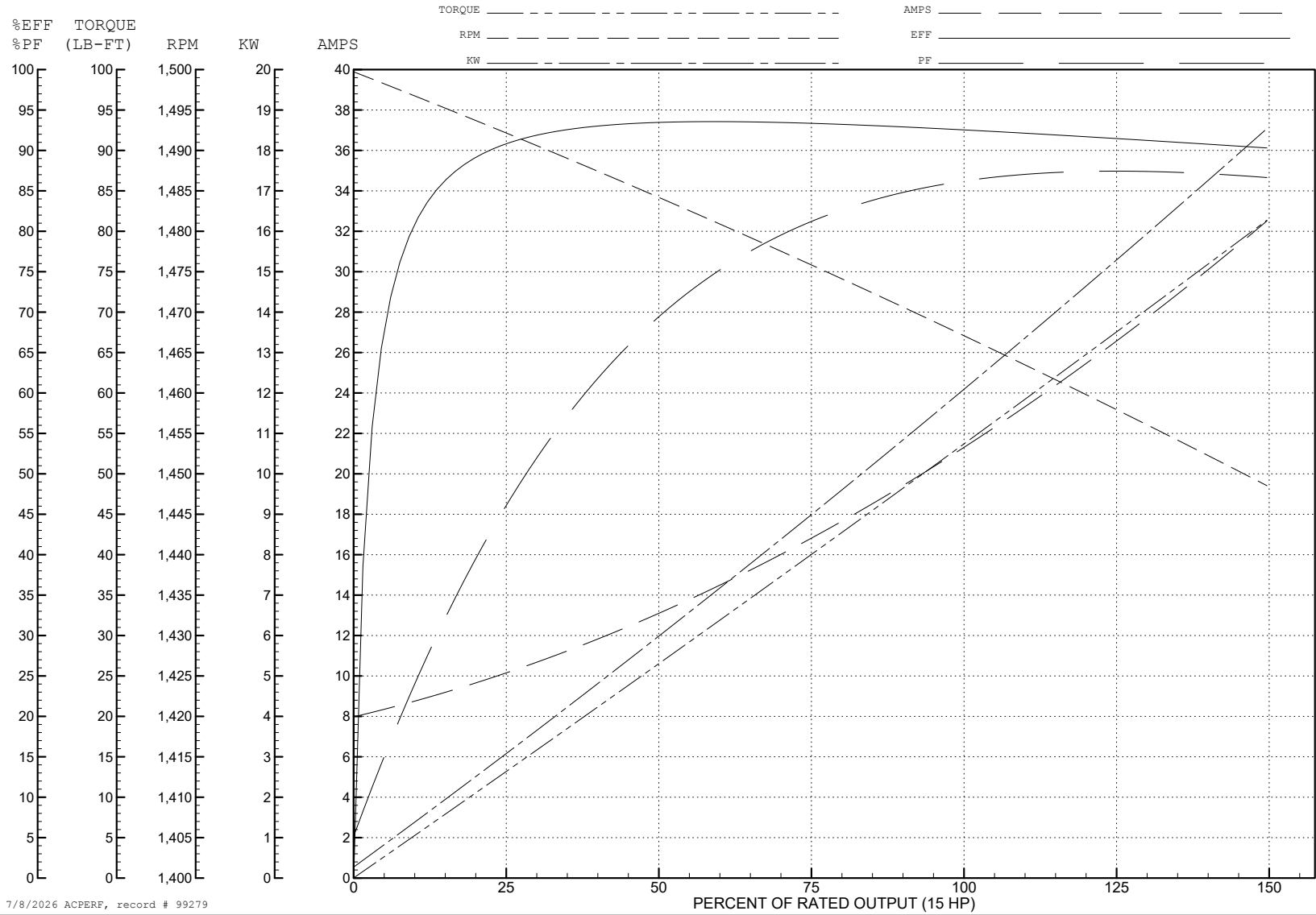
ABB Motors and Mechanical Inc.

WINDING # 09WGT342

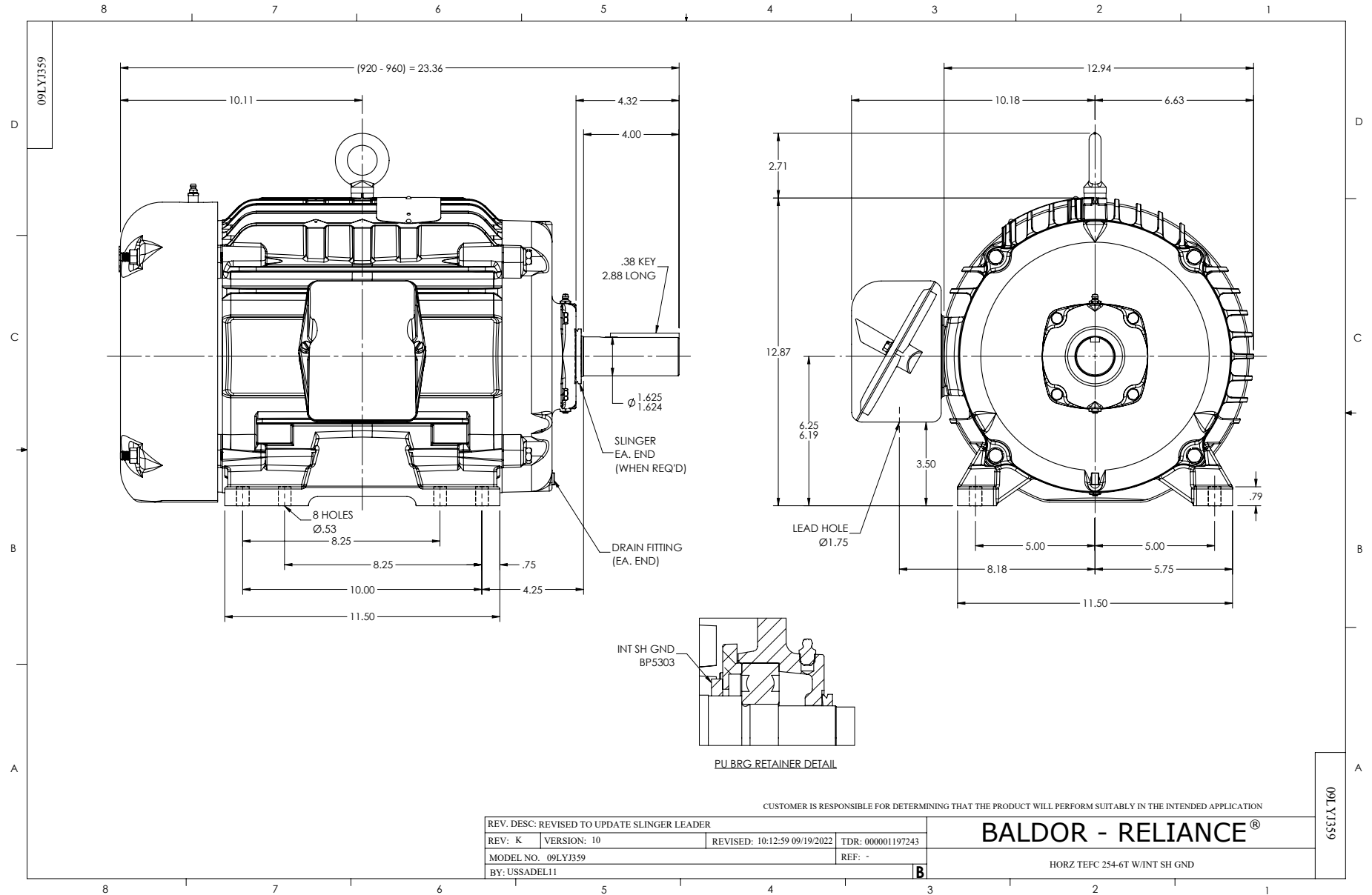
Typical performance - not guaranteed values.

15 HP 3 PH 50 HZ 1467 RPM 380 V 0948M

TORQUES (LB-FT): PO=169 PU=88.9 LR=103 LRA=144



7/8/2026 ACPERF, record # 99279



CD0005

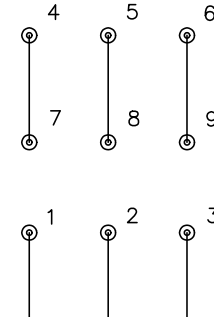


LOW VOLTAGE
(2Y)



LINE

HIGH VOLTAGE
(1Y)



LINE

NOTES:

1. INTERCHANGE ANY TWO LINE LEADS TO REVERSE ROTATION.
2. OPTIONAL THERMOSTATS ARE PROVIDED WHEN SPECIFIED.
3. ACTUAL NUMBER OF INTERNAL PARALLEL CIRCUITS MAY BE A MULTIPLE OF THOSE SHOWN ABOVE.
4. LEAD COLORS ARE OPTIONAL. LEADS MUST ALWAYS BE NUMBERED AS SHOWN.

CD0005

REV. DESC: REVISE TO SHOW OPTIONAL COLORS

REV. LTR: E BY: JLP REVISED: 01/19/99 10:15 TDR: 0171435

500000

FILE: AAA00005140

MDL: -

MTL: -

BALDOR ELECTRIC Co.

3PH, DV, 9 LEADS