

ABB BALDOR RELIANCE III

Customer information packet

GNEM2332T

10HP//7.5KW, 1180//980RPM, 3PH, 60//50HZ, 25

Class - None

Division - Not Applicable

Specifications

Enclosure	TEFC
Frame	256T
Frame Material	Iron
Frequency	50.00 Hz 60.00 Hz
Haz Area Class and Group	None
Haz Area Division	Not Applicable
Motor Letter Type	Three Phase
Output @ Frequency	7.500 KW @ 50 HZ 10.000 HP @ 60 HZ
Phase	3
Synchronous Speed @ Frequency	1200 RPM @ 60 HZ
Voltage @ Frequency	208.0 V @ 60 HZ 190.0 V @ 50 HZ 230.0 V @ 60 HZ 380.0 V @ 50 HZ 460.0 V @ 60 HZ
Agency Approvals	WEEE UKCA NEMA PREMIUM (OLD LOGO) NEMA PREMIUM IE3 CURUSEEV CE
Ambient Temperature	40 °C
Auxiliary Box	NO AUXILLARY BOX
Auxiliary Box Lead Termination	None
Base Indicator	Rigid
Bearing Grease Type	Polyrex EM (-20F +300F)
Blower	None
Current @ Voltage	38.000 A @ 190.0 V 33.600 A @ 230.0 V

Part Detail

Revision	B
Type	AC
Mech. spec.	09P11
Base	
Status	PRD/A
Elec. spec.	09WGZ739
Layout	09LYP011
Eff. date	02-07-2024
CD Diagram	CD0005
Poles	06
Leads	9#12
Proprietary	False
Created date	09-19-2023

32.400 A @ 208.0 V

19.000 A @ 380.0 V

16.800 A @ 460.0 V

Design Code	A
Drip Cover	No Drip Cover
Duty Rating	CONT
Efficiency @ 100% Load	91.0 %
Electrically Isolated Bearing	Not Electrically Isolated
Feedback Device	NO FEEDBACK
Front Shaft Indicator	None
Heater Indicator	No Heater
High Voltage Full Load Amps	16.8 a
Insulation Class	F
Inverter Code	Inverter Duty
KVA Code	L
Lifting Lugs	Standard Lifting Lugs
Locked Bearing Indicator	Locked Bearing
Motor Lead Quantity/Wire Size	9 @ 12 AWG
Motor Lead Termination	Flying Leads
Motor Standards	NEMA
Motor Type	0960M
Mounting Arrangement	F1
Number of Poles	6
Overall Length	23.36 IN
Power Factor	61
Product Family	General Purpose
Pulley End Bearing Type	Ball
Pulley Face Code	Standard
Pulley Shaft Indicator	Standard
Rodent Screen	None
RoHS Status	ROHS COMPLIANT
Service Factor	1.15
Shaft Diameter	1.625 IN
Shaft Ground Indicator	No Shaft Grounding

Shaft Rotation	Reversible
Shaft Slinger Indicator	Shaft Slinger
Speed	1180 rpm 980 rpm
Speed Code	Single Speed
Starting Method	Direct on line
Thermal Device - Bearing	None
Thermal Device - Winding	None
Vibration Sensor Indicator	No Vibration Sensor
Winding Thermal 1	None
Winding Thermal 2	None

Nameplate

NP4304L									
CAT.NO.	GNEM2332T								
SPEC.	09P011Z739G1								
HP	10HP//7.5KW				PH	3			
VOLTS	208-230/460//190/380								
AMPS	32.4-33.6/16.8//38/19								
R.P.M. (1/MIN)	1180//980				WT.	159KG		KG	
FRAME	256T		HZ	60//50		I.P.	54		
SER.F.	1.15	CODE	L	DES.	A	CLASS	F		
NOM.EFF.	91//89		% (100%)						
P.F.	61	IC411, 10:1 VT							
RATING	40C AMB-S1 CONT				CC	010A			
DE	6309		ODE	6208					
ENCL	TEFC	SN							
	SFA 36/18//42/21								
	IE3-50HZ 91.0 (75%),90.1 (50%)								
	IE3-60HZ 90.6 (75%),89.5 (50%)								

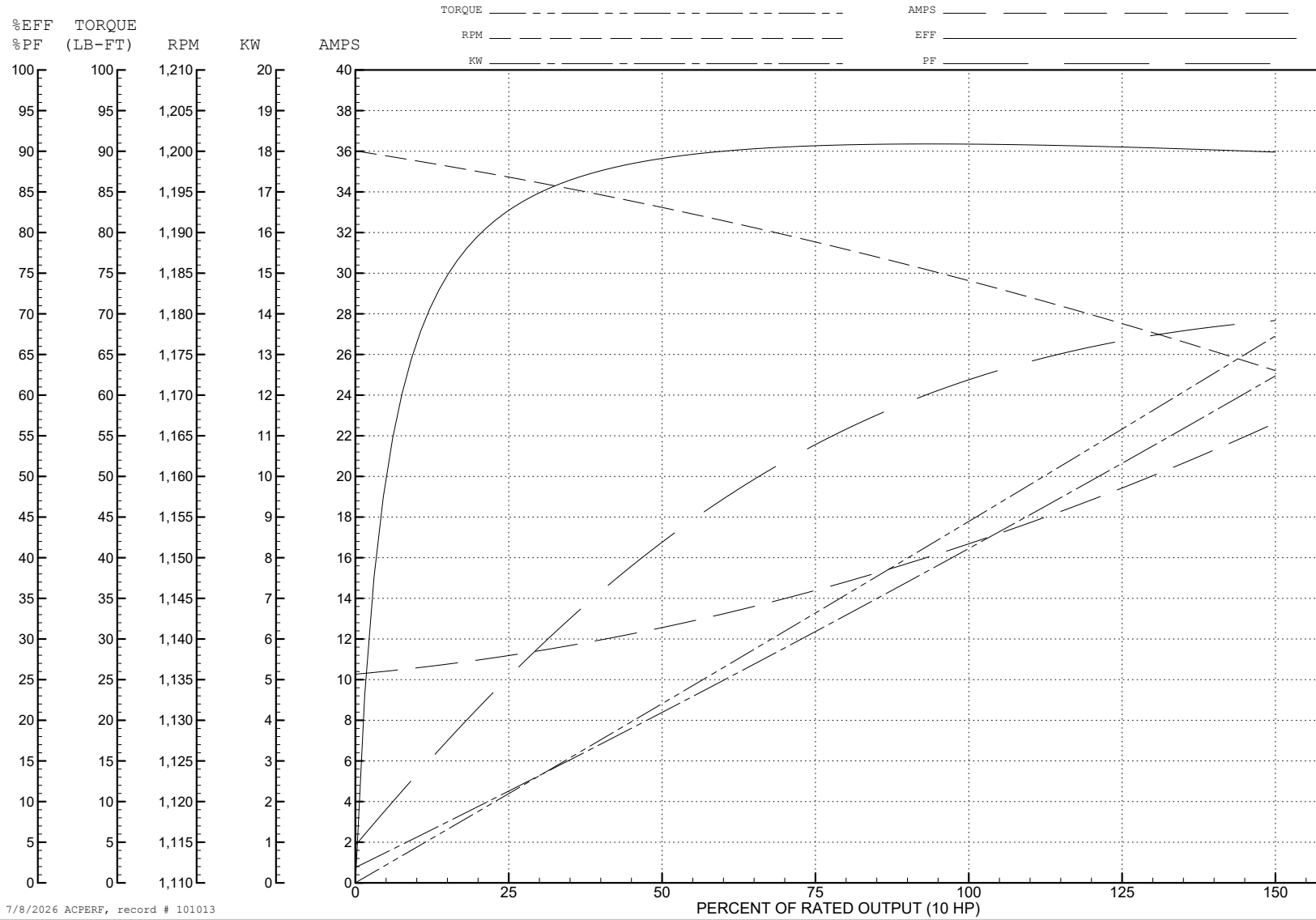
ABB Motors and Mechanical Inc.

WINDING # 09WGZ739

Typical performance - not guaranteed values.

10 HP 3 PH 60 HZ 1184 RPM 460 V 0960M

TORQUES (LB-FT): PO=181 PU=72.2 LR=92.1 LRA=121



7/8/2026 ACPERF, record # 101013

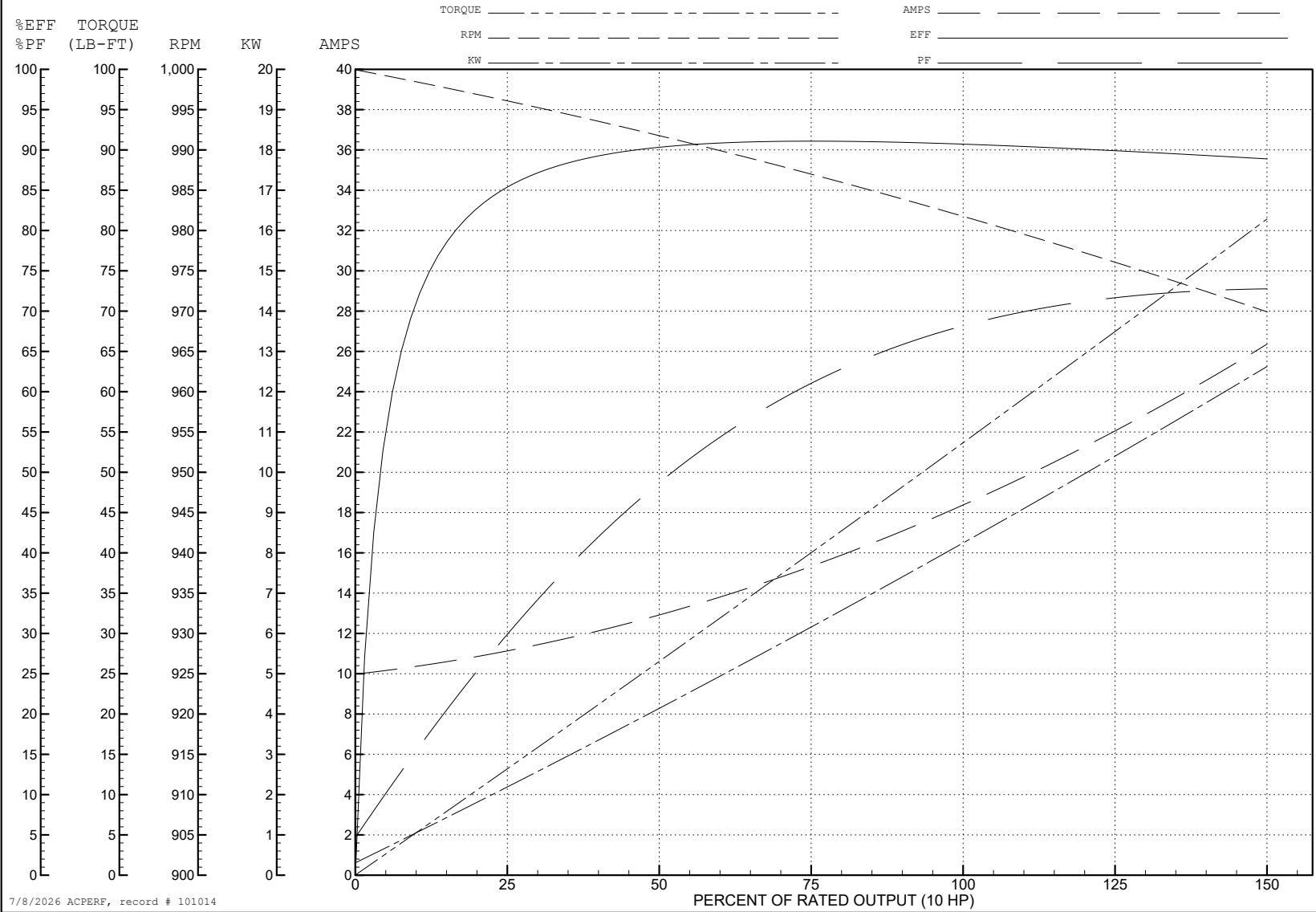
ABB Motors and Mechanical Inc.

WINDING # 09WGZ739

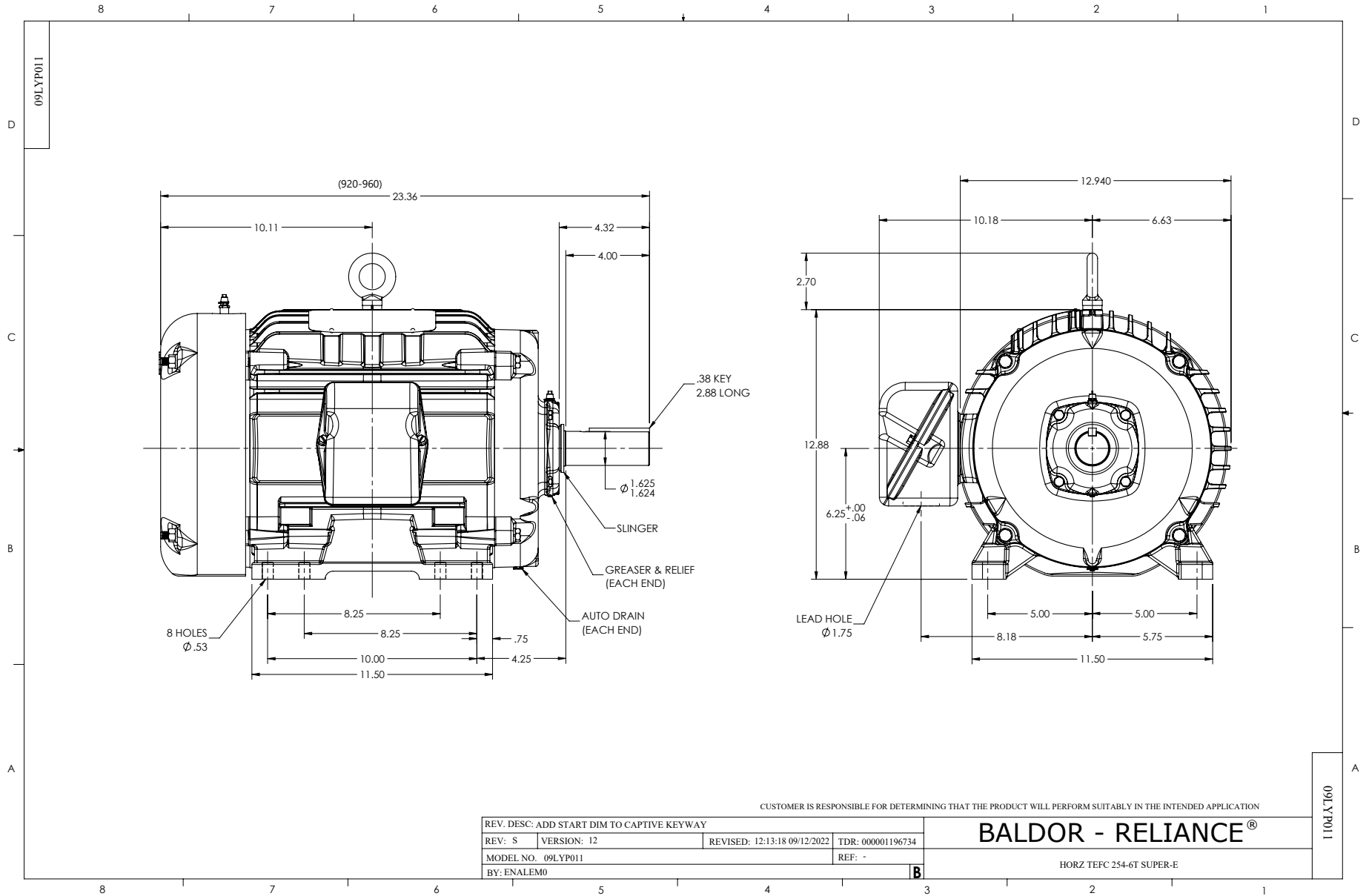
10 HP 3 PH 50 HZ 982 RPM 380 V 0960M

Typical performance - not guaranteed values.

TORQUES (LB-FT): PO=175 PU=75.8 LR=96.6 LRA=118



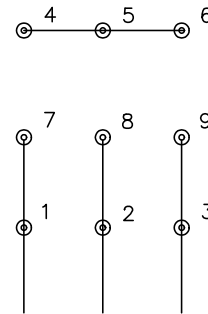
7/8/2026 ACPERF, record # 101014



CD0005



LOW VOLTAGE
(2Y)



LINE

HIGH VOLTAGE
(1Y)



LINE

NOTES:

1. INTERCHANGE ANY TWO LINE LEADS TO REVERSE ROTATION.
2. OPTIONAL THERMOSTATS ARE PROVIDED WHEN SPECIFIED.
3. ACTUAL NUMBER OF INTERNAL PARALLEL CIRCUITS MAY BE A MULTIPLE OF THOSE SHOWN ABOVE.
4. LEAD COLORS ARE OPTIONAL. LEADS MUST ALWAYS BE NUMBERED AS SHOWN.

CD0005

REV. DESC: REVISE TO SHOW OPTIONAL COLORS

REV. LTR: E BY: JLP REVISED: 01/19/99 10:15 TDR: 0171435

500000

FILE: AAA00005140

MDL: -

MTL: -

BALDOR ELECTRIC Co.

3PH, DV, 9 LEADS