

**BALDOR • RELIANCE**

---

# Customer information packet

## GNEM2332T-G

10HP//7.5KW, 1180//980RPM, 3PH, 60//50HZ, 25

Class - None

Division - Not Applicable

## Specifications

Enclosure	TEFC
Frame	254T
Frame Material	Iron
Frequency	50.00 Hz 60.00 Hz
Haz Area Class and Group	None
Haz Area Division	Not Applicable
Motor Letter Type	Three Phase
Output @ Frequency	7.500 KW @ 50 HZ 10.000 HP @ 60 HZ
Phase	3
Synchronous Speed @ Frequency	1200 RPM @ 60 HZ
Voltage @ Frequency	190.0 V @ 50 HZ 208.0 V @ 60 HZ 230.0 V @ 60 HZ 380.0 V @ 50 HZ 460.0 V @ 60 HZ
Agency Approvals	CE WEEE UKCA CURUSEEV IE3 NEMA PREMIUM
Ambient Temperature	40 °C
Auxiliary Box	NO AUXILLARY BOX
Auxiliary Box Lead Termination	None
Base Indicator	Rigid
Bearing Grease Type	Polyrex EM (-20F +300F)
Blower	None
Current @ Voltage	38.000 A @ 190.0 V 33.600 A @ 230.0 V 32.400 A @ 208.0 V 19.000 A @ 380.0 V

## Part detail

Revision	F
Type	AC
Mech. spec.	09J359
Base	
Status	PRD/A
Elec. spec.	09WGX739
Layout	09LYJ359
Eff. date	03-12-2026
CD Diagram	CD0005
Poles	06
Leads	9#12
Proprietary	False
Created date	09-19-2023

	16.800 A @ 460.0 V
Design Code	A
Drip Cover	No Drip Cover
Duty Rating	CONT
Efficiency @ 100% Load	91.0 %
Electrically Isolated Bearing	Not Electrically Isolated
Feedback Device	NO FEEDBACK
Front Shaft Indicator	None
Heater Indicator	No Heater
High Voltage Full Load Amps	16.8 a
Insulation Class	H
Inverter Code	Inverter Duty
KVA Code	L
Lifting Lugs	Standard Lifting Lugs
Locked Bearing Indicator	Locked Bearing
Motor Lead Quantity/Wire Size	9 @ 12 AWG
Motor Lead Termination	Flying Leads
Motor Standards	NEMA
Motor Type	0960M
Mounting Arrangement	F1
Number of Poles	6
Overall Length	23.36 IN
Power Factor	61
Product Family	General Purpose
Pulley End Bearing Type	Ball
Pulley Face Code	Standard
Pulley Shaft Indicator	Standard
Rodent Screen	None
RoHS Status	ROHS COMPLIANT
Service Factor	1.15
Shaft Diameter	1.625 IN
Shaft Ground Indicator	Shaft Grounding
Shaft Rotation	Reversible
Shaft Slinger Indicator	Shaft Slinger

<b>Speed</b>	1180 rpm
	980 rpm
<b>Speed Code</b>	Single Speed
<b>Starting Method</b>	Direct on line
<b>Thermal Device - Bearing</b>	None
<b>Thermal Device - Winding</b>	None
<b>Vibration Sensor Indicator</b>	No Vibration Sensor
<b>Winding Thermal 1</b>	None
<b>Winding Thermal 2</b>	None

**Nameplate**

<b>NP4304L</b>									
<b>CAT.NO.</b>	GNEM2332T-G								
<b>SPEC.</b>	09J359Z739G1								
<b>HP</b>	10HP//7.5KW				<b>PH</b>	3			
<b>VOLTS</b>	208-230/460//190/380								
<b>AMPS</b>	32.4-33.6/16.8//38/19								
<b>R.P.M. (1/MIN)</b>	1180//980				<b>WT.</b>	159KG		<b>KG</b>	
<b>FRAME</b>	256T		<b>HZ</b>	60//50		<b>I.P.</b>	54		
<b>SER.F.</b>	1.15	<b>CODE</b>	L	<b>DES.</b>	A	<b>CLASS</b>	H		
<b>NOM.EFF.</b>	91//89		<b>% (100%)</b>						
<b>P.F.</b>	61	IC411, 10:1 VT							
<b>RATING</b>	40C AMB-S1 CONT				<b>CC</b>	010A			
<b>DE</b>	6309		<b>ODE</b>	6208					
<b>ENCL</b>	TEFC	<b>SN</b>							
	SFA 36/18//42/21								
	IE3-50HZ 91.0 (75%),90.1 (50%)								
	IE3-60HZ 90.6 (75%),89.5 (50%)								

**AC Induction Motor Performance Data**

Record # 102708

Typical performance - not guaranteed values

Winding: 09WUZ739-R010		Type: 0960M	Enclosure: TEFC	
<b>Nameplate Data</b>			<b>460 V, 60 Hz: High Voltage Connection</b>	
Rated Output (HP)	10HP//7.5KW		Full Load Torque	44.4 LB-FT
Volts	208-230/460//190/380		Start Configuration	direct on line
Full Load Amps	32.4-33.6/16.8//38/19		Breakdown Torque	181 LB-FT
R.P.M.	1180//980		Pull-up Torque	72.2 LB-FT
Hz	60//50	Phase 3	Locked-rotor Torque	92.1 LB-FT
NEMA Design Code	A	KVA Code L	Starting Current	121 A
Service Factor (S.F.)	1.15		No-load Current	10.4 A
NEMA Nom. Eff.	91	Power Factor 61	Line-line Res. @ 25°C	0.506 Ω
Rating - Duty	40C AMB-CONT		Temp. Rise @ Rated Load	52°C
S.F. Amps	36/18//42/21		Temp. Rise @ S.F. Load	63°C
			Locked-rotor Power Factor	25.4
			Rotor inertia	4.82 lb-ft <sup>2</sup>

**Load Characteristics 460 V, 60 Hz, 10 HP**

% of Rated Load	25	50	75	100	125	150	S.F.
Power Factor	26	42	54	61	66	70	64
Efficiency	82	88.9	90.6	91.1	90.4	89.8	90.7
Speed	1197	1193	1189	1184	1179	1173	1181
Line amperes	11	12.5	14.3	16.8	19.5	22.5	18.4

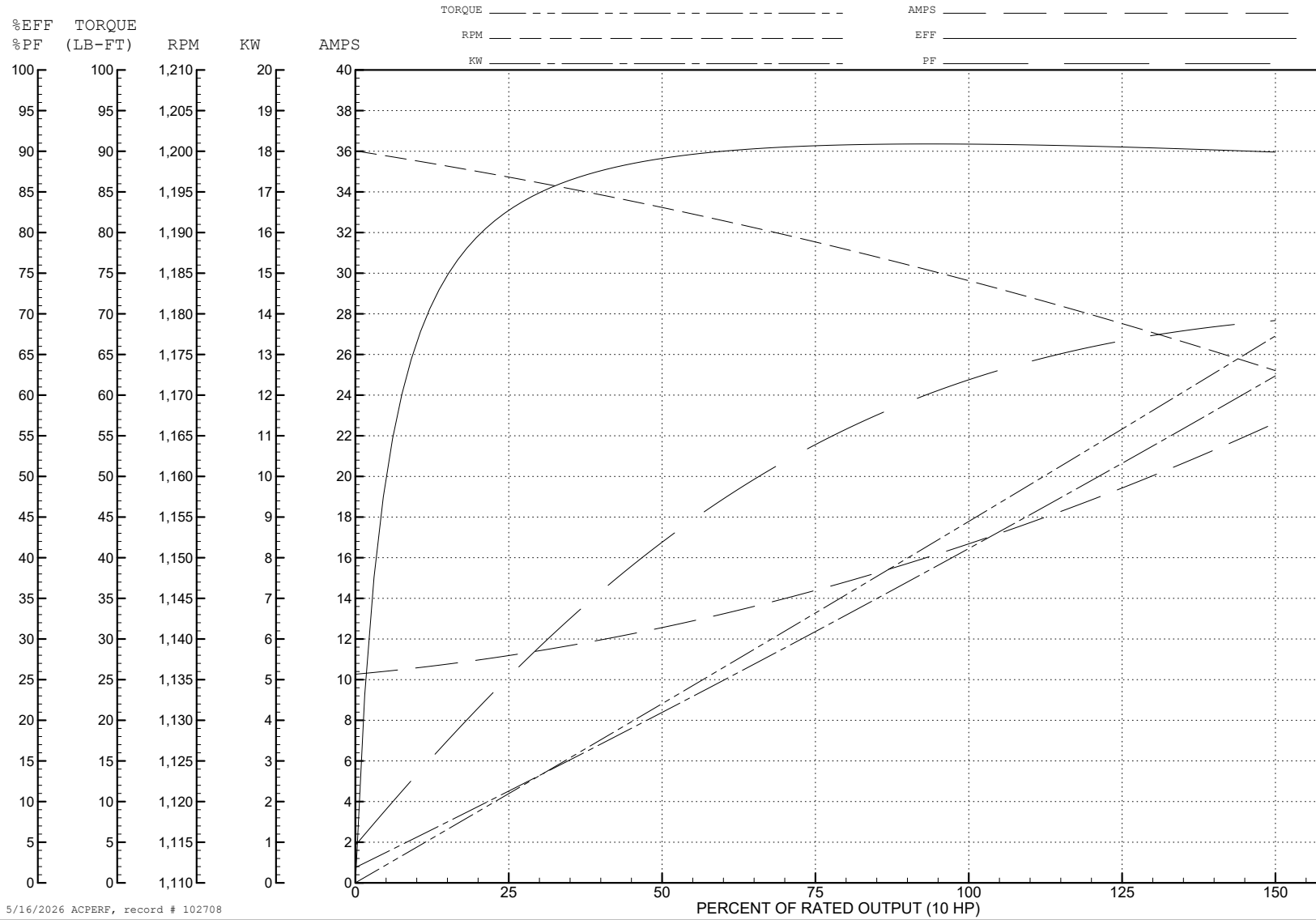
ABB Motors and Mechanical Inc.

WINDING # 09WGZ739

Typical performance - not guaranteed values.

10 HP 3 PH 60 HZ 1184 RPM 460 V 0960M

TORQUES (LB-FT): PO=181 PU=72.2 LR=92.1 LRA=121



5/16/2026 ACPERF, record # 102708

**AC Induction Motor Performance Data**

Record # 102709

Typical performance - not guaranteed values

Winding: 09WGX739-R010		Type: 0960M	Enclosure: TEFC	
<b>Nameplate Data</b>			<b>380 V, 50 Hz: High Voltage Connection</b>	
Rated Output (HP)	10HP//7.5KW		Full Load Torque	53.56 LB-FT
Volts	208-230/460//190/380		Start Configuration	direct on line
Full Load Amps	32.4-33.6/16.8//38/19		Breakdown Torque	175 LB-FT
R.P.M.	1180//980		Pull-up Torque	75.8 LB-FT
Hz	60//50	Phase 3	Locked-rotor Torque	96.6 LB-FT
NEMA Design Code	A	KVA Code L	Starting Current	118 A
Service Factor (S.F.)	1.15		No-load Current	10.16 A
NEMA Nom. Eff.	91	Power Factor 61	Line-line Res. @ 25°C	0.506 Ω
Rating - Duty	40C AMB-CONT		Temp. Rise @ Rated Load	60°C
S.F. Amps	36/18//42/21		Temp. Rise @ S.F. Load	75°C
			Locked-rotor Power Factor	28.3
			Rotor inertia	4.82 lb-ft <sup>2</sup>

**Load Characteristics 380 V, 50 Hz, 10 HP**

% of Rated Load	25	50	75	100	125	150	S.F.
Power Factor	30	49	61	67	71	73	69
Efficiency	84.6	90.1	91	91	89.8	88.8	90.3
Speed	996	992	987	982	976	970	978
Line amperes	10.89	12.8	15.21	18.52	22.13	26.18	20.7

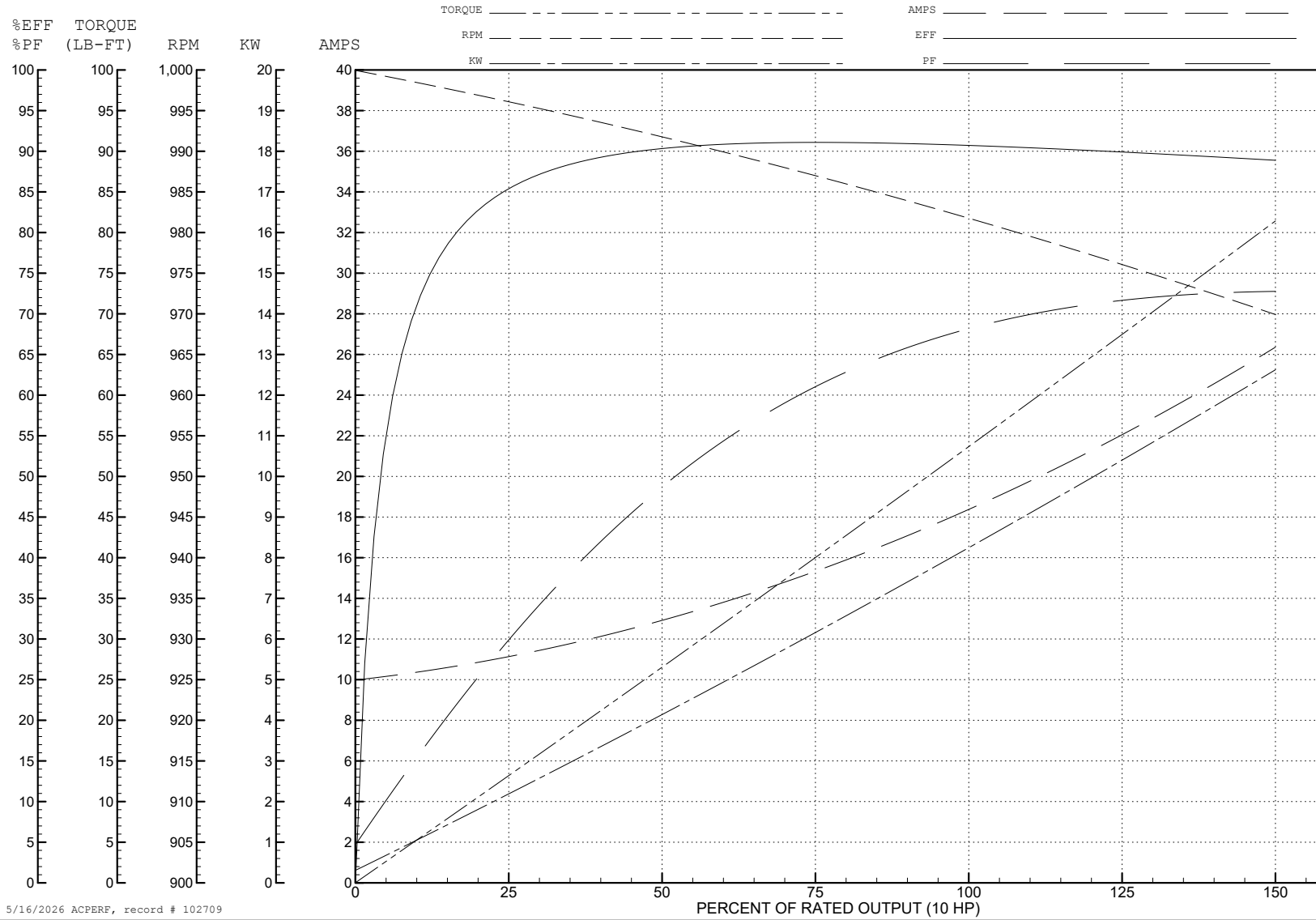
ABB Motors and Mechanical Inc.

WINDING # 09WGZ739

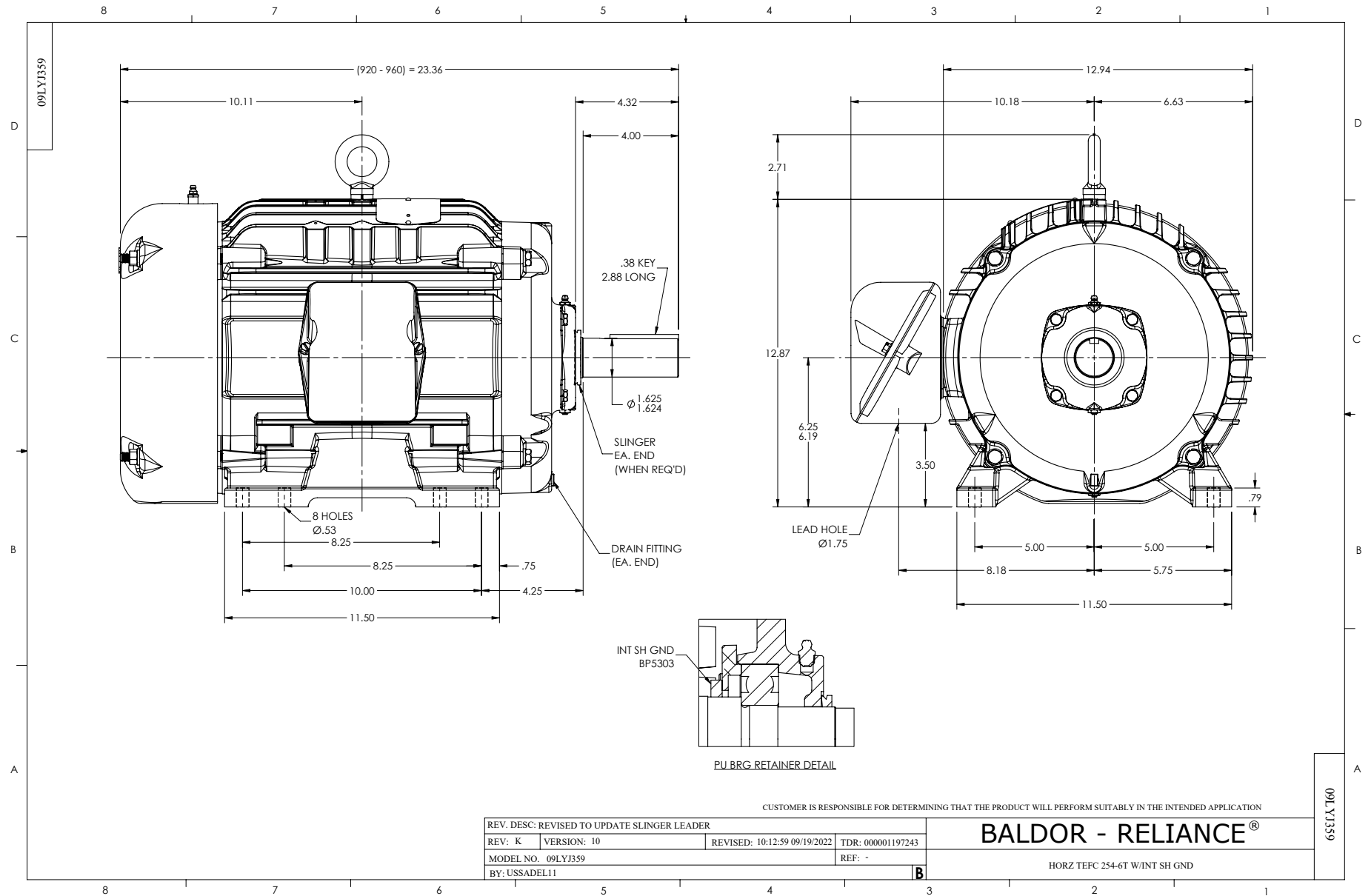
10 HP 3 PH 50 HZ 982 RPM 380 V 0960M

Typical performance - not guaranteed values.

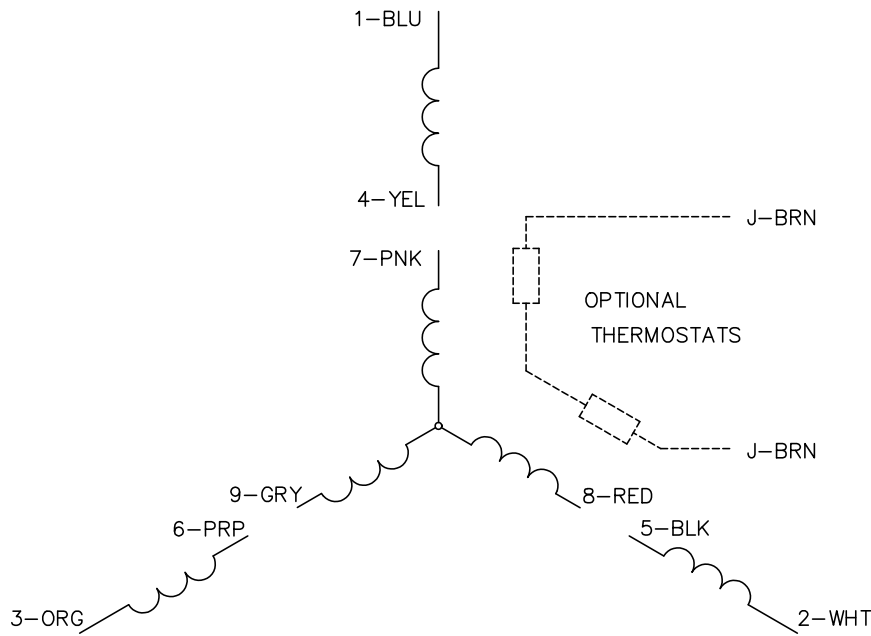
TORQUES (LB-FT): PO=175 PU=75.8 LR=96.6 LRA=118



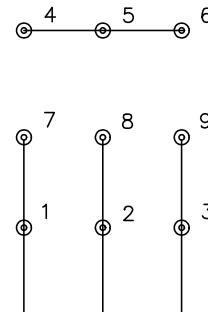
5/16/2026 ACPERF, record # 102709



CD0005

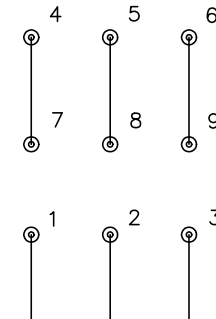


LOW VOLTAGE  
(2Y)



LINE

HIGH VOLTAGE  
(1Y)



LINE

NOTES:

1. INTERCHANGE ANY TWO LINE LEADS TO REVERSE ROTATION.
2. OPTIONAL THERMOSTATS ARE PROVIDED WHEN SPECIFIED.
3. ACTUAL NUMBER OF INTERNAL PARALLEL CIRCUITS MAY BE A MULTIPLE OF THOSE SHOWN ABOVE.
4. LEAD COLORS ARE OPTIONAL. LEADS MUST ALWAYS BE NUMBERED AS SHOWN.

CD0005

REV. DESC: REVISE TO SHOW OPTIONAL COLORS			
REV. LTR: E	BY: JLP	REVISED: 01/19/99 10:15	TDR: 0171435
S00000		FILE: AAA00005140	MDL: -
		MTL: -	

**BALDOR ELECTRIC Co.**

3PH, DV, 9 LEADS