

# **ABB BALDOR RELIANCE III**

---

## **Customer information packet**

### GNEM2276T-G

7.5HP//5KW, 1175//980RPM, 3PH, 60//50HZ, 254

Class - None

Division - Not Applicable

**Specifications**

<b>Enclosure</b>	TEFC
<b>Frame</b>	254T
<b>Frame Material</b>	Iron
<b>Frequency</b>	50.00 Hz 60.00 Hz
<b>Haz Area Class and Group</b>	None
<b>Haz Area Division</b>	Not Applicable
<b>Motor Letter Type</b>	Three Phase
<b>Output @ Frequency</b>	7.500 HP @ 60 HZ 5.000 KW @ 50 HZ
<b>Phase</b>	3
<b>Synchronous Speed @ Frequency</b>	1200 RPM @ 60 HZ
<b>Voltage @ Frequency</b>	190.0 V @ 50 HZ 208.0 V @ 60 HZ 230.0 V @ 60 HZ 380.0 V @ 50 HZ 460.0 V @ 60 HZ
<b>Agency Approvals</b>	CE WEEE UKCA CURUSEEV IE3 NEMA PREMIUM
<b>Ambient Temperature</b>	40 °C
<b>Auxiliary Box</b>	NO AUXILLARY BOX
<b>Auxiliary Box Lead Termination</b>	None
<b>Base Indicator</b>	Rigid
<b>Bearing Grease Type</b>	Polyrex EM (-20F +300F)
<b>Blower</b>	None
<b>Current @ Voltage</b>	26.000 A @ 190.0 V 23.400 A @ 208.0 V 22.800 A @ 230.0 V

**Part Detail**

<b>Revision</b>	E
<b>Type</b>	AC
<b>Mech. spec.</b>	09J359
<b>Base</b>	
<b>Status</b>	PRD/A
<b>Elec. spec.</b>	09WGZ495
<b>Layout</b>	09LYJ359
<b>Eff. date</b>	03-12-2026
<b>CD Diagram</b>	CD0005
<b>Poles</b>	06
<b>Leads</b>	9#12
<b>Proprietary</b>	False
<b>Created date</b>	09-19-2023

	13.000 A @ 380.0 V
	11.400 A @ 460.0 V
<b>Design Code</b>	A
<b>Drip Cover</b>	No Drip Cover
<b>Duty Rating</b>	CONT
<b>Efficiency @ 100% Load</b>	91.0 %
<b>Electrically Isolated Bearing</b>	Not Electrically Isolated
<b>Feedback Device</b>	NO FEEDBACK
<b>Front Shaft Indicator</b>	None
<b>Heater Indicator</b>	No Heater
<b>High Voltage Full Load Amps</b>	11.4 a
<b>Insulation Class</b>	F
<b>Inverter Code</b>	Inverter Ready
<b>KVA Code</b>	K
<b>Lifting Lugs</b>	Standard Lifting Lugs
<b>Locked Bearing Indicator</b>	Locked Bearing
<b>Motor Lead Quantity/Wire Size</b>	9 @ 12 AWG
<b>Motor Lead Termination</b>	Flying Leads
<b>Motor Standards</b>	NEMA
<b>Motor Type</b>	0952M
<b>Mounting Arrangement</b>	F1
<b>Number of Poles</b>	6
<b>Overall Length</b>	23.36 IN
<b>Power Factor</b>	68
<b>Product Family</b>	General Purpose
<b>Pulley End Bearing Type</b>	Ball
<b>Pulley Face Code</b>	Standard
<b>Pulley Shaft Indicator</b>	Standard
<b>Rodent Screen</b>	None
<b>RoHS Status</b>	ROHS COMPLIANT
<b>Service Factor</b>	1.15
<b>Shaft Diameter</b>	1.625 IN
<b>Shaft Ground Indicator</b>	Shaft Grounding
<b>Shaft Rotation</b>	Reversible

<b>Shaft Slinger Indicator</b>	Shaft Slinger
<b>Speed</b>	1175 rpm 980 rpm
<b>Speed Code</b>	Single Speed
<b>Starting Method</b>	Direct on line
<b>Thermal Device - Bearing</b>	None
<b>Thermal Device - Winding</b>	None
<b>Vibration Sensor Indicator</b>	No Vibration Sensor
<b>Winding Thermal 1</b>	None
<b>Winding Thermal 2</b>	None

**Nameplate**

<b>NP4304L</b>									
<b>CAT.NO.</b>	GNEM2276T-G								
<b>SPEC.</b>	09J359Z495G1								
<b>HP</b>	7.5HP//5KW				<b>PH</b>	3			
<b>VOLTS</b>	208-230/460//190/380								
<b>AMPS</b>	23.4-22.8/11.4//26/13								
<b>R.P.M. (1/MIN)</b>	1175//980				<b>WT.</b>	127KG		<b>KG</b>	
<b>FRAME</b>	254T		<b>HZ</b>	60//50		<b>I.P.</b>	54		
<b>SER.F.</b>	1.15	<b>CODE</b>	K	<b>DES.</b>	A	<b>CLASS</b>	H		
<b>NOM.EFF.</b>	91		<b>% (100%)</b>						
<b>P.F.</b>	68 IC411, 10:1 VT								
<b>RATING</b>	40C AMB-CONT				<b>CC</b>	010A			
<b>DE</b>	6309		<b>ODE</b>	6208					
<b>ENCL</b>	TEFC	<b>SN</b>							
	SFA 26.6-25.4/12.7//29.4/14.7								
	IE3-50HZ 90.9 (75%),90.0 (50%)								
	IE3-60HZ 90.7 (75%),89.0 (50%)								

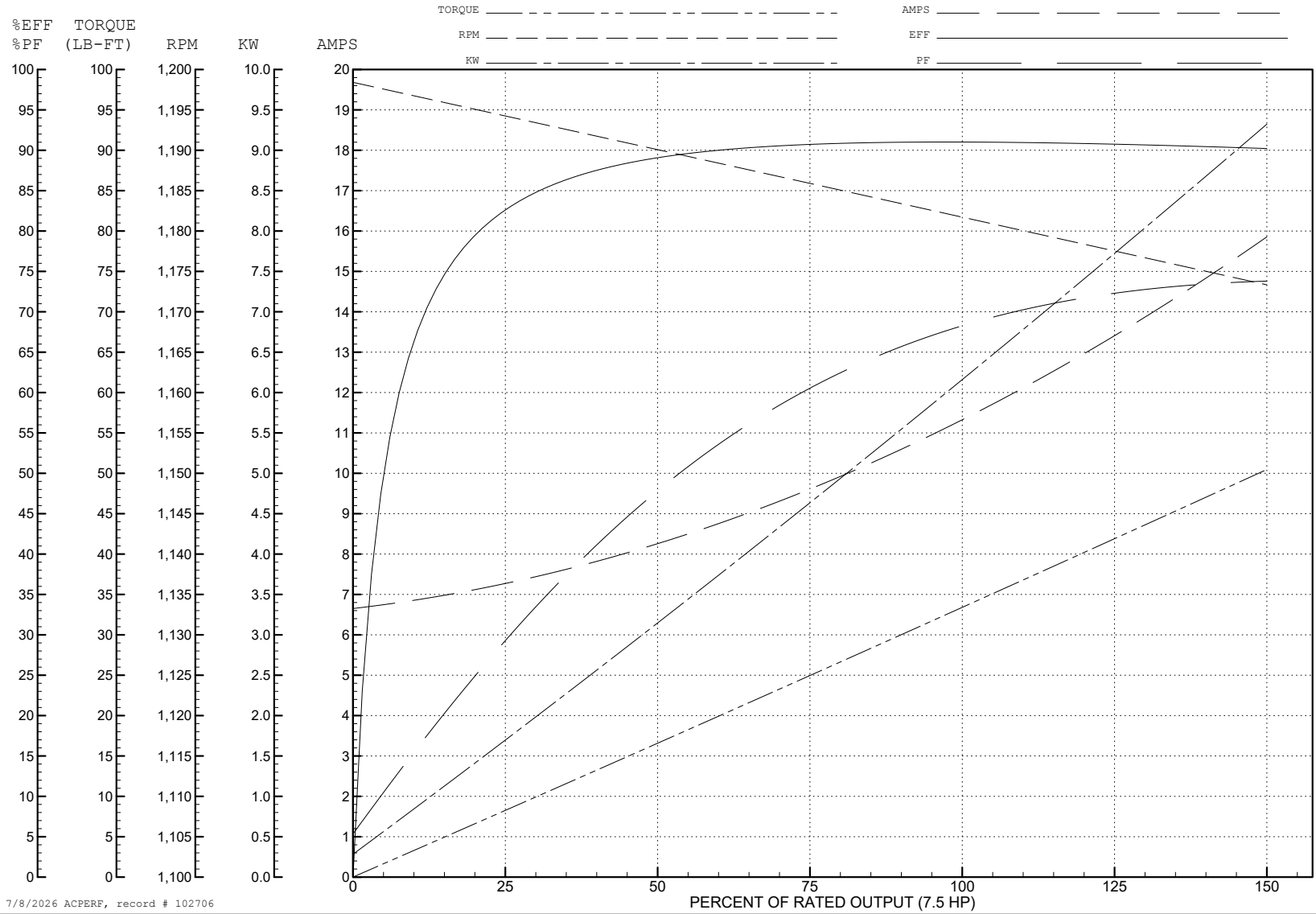
ABB Motors and Mechanical Inc.

WINDING # 09WGZ495

Typical performance - not guaranteed values.

7.5 HP 3 PH 60 HZ 1182 RPM 460 V 0952M

TORQUES (LB-FT): PO=140 PU=44.7 LR=67.3 LRA=83.4



7/8/2026 ACPERF, record # 102706

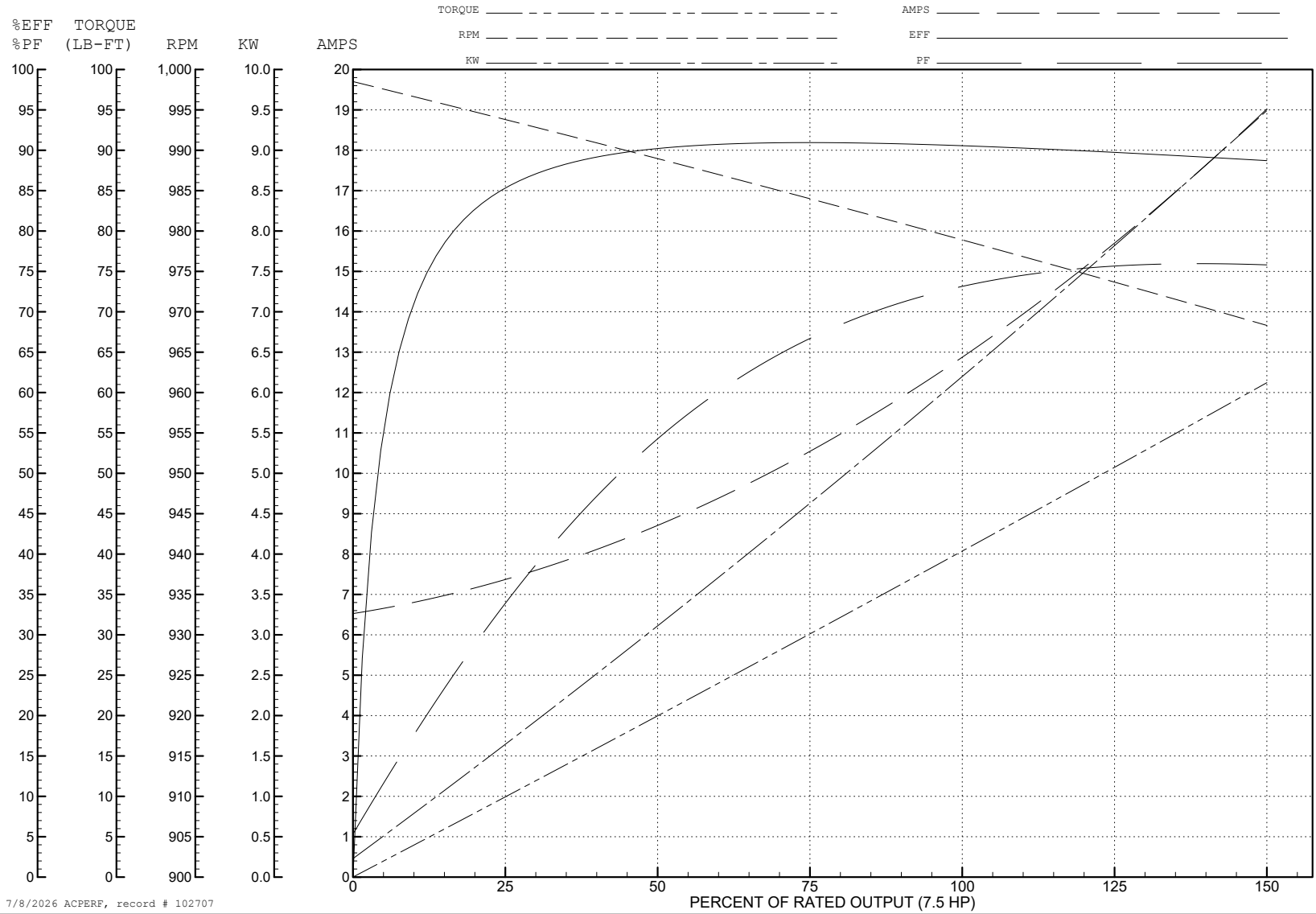
ABB Motors and Mechanical Inc.

WINDING # 09WGZ495

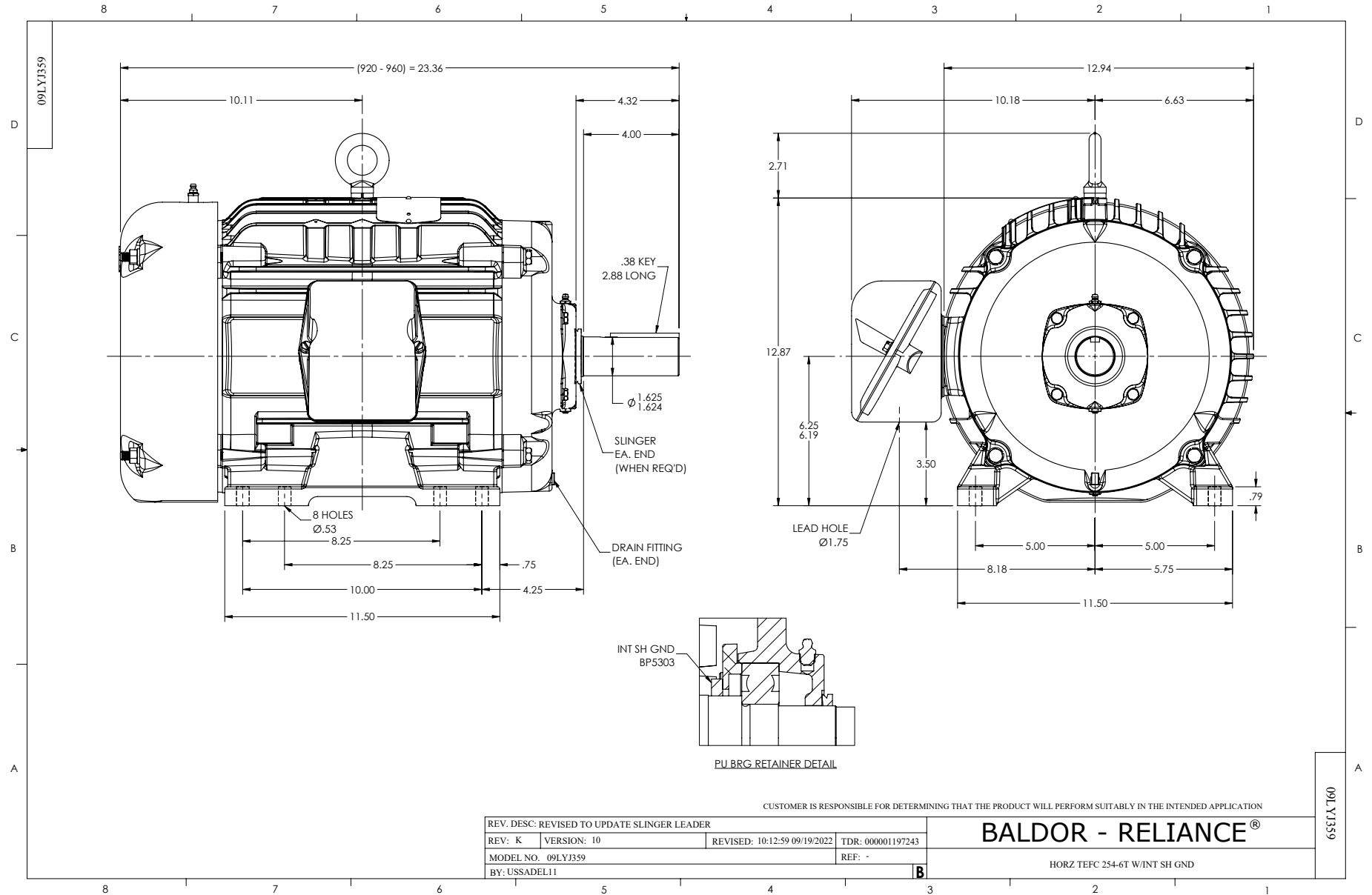
Typical performance - not guaranteed values.

7.5 HP 3 PH 50 HZ 979 RPM 380 V 0952M

TORQUES (LB-FT): PO=135 PU=47 LR=70.7 LRA=81.7



7/8/2026 ACPERF, record # 102707



CD0005

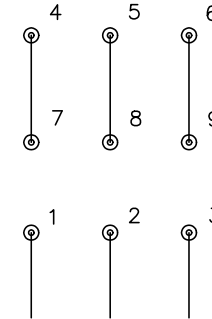


LOW VOLTAGE  
(2Y)



LINE

HIGH VOLTAGE  
(1Y)



LINE

NOTES:

1. INTERCHANGE ANY TWO LINE LEADS TO REVERSE ROTATION.
2. OPTIONAL THERMOSTATS ARE PROVIDED WHEN SPECIFIED.
3. ACTUAL NUMBER OF INTERNAL PARALLEL CIRCUITS MAY BE A MULTIPLE OF THOSE SHOWN ABOVE.
4. LEAD COLORS ARE OPTIONAL. LEADS MUST ALWAYS BE NUMBERED AS SHOWN.

CD0005

REV. DESC: REVISE TO SHOW OPTIONAL COLORS

REV. LTR: E BY: JLP REVISED: 01/19/99 10:15 TDR: 0171435

500000

FILE: AAA00005140

MDL: -

MTL: -

**BALDOR ELECTRIC Co.**

3PH, DV, 9 LEADS