

ABB BALDOR RELIANCE III

Customer information packet GDL3774T

10HP, 1740RPM, 1PH, 60HZ, 215TZ, 0748LC, TEFC

Class - None

Division - Not Applicable

Specifications

Enclosure	TEFC
Frame	215TZ
Frame Material	Iron
Frequency	60.00 Hz
Haz Area Class and Group	None
Haz Area Division	Not Applicable
Motor Letter Type	Cap Start, Cap Run
Output @ Frequency	10.000 HP @ 60 HZ
Phase	1
Synchronous Speed @ Frequency	1800 RPM @ 60 HZ
Voltage @ Frequency	230.0 V @ 60 HZ
Agency Approvals	UR CSA
Ambient Temperature	40 °C
Auxiliary Box	NO AUXILLARY BOX
Auxiliary Box Lead Termination	None
Base Indicator	Rigid
Bearing Grease Type	Polyrex EM (-20F +300F)
Blower	None
Current @ Voltage	38.000 A @ 230.0 V
Design Code	L
Drip Cover	No Drip Cover
Duty Rating	CONT
Efficiency @ 100% Load	86.5 %
Electrically Isolated Bearing	Not Electrically Isolated
Feedback Device	NO FEEDBACK
Front Face Code	Standard
Front Shaft Indicator	None
Heater Indicator	No Heater
High Voltage Full Load Amps	38.0 a
Insulation Class	F
Inverter Code	Not Inverter

Part Detail

Revision	L
Type	AC
Mech. spec.	07N243
Base	
Status	PRD/A
Elec. spec.	07WGY838
Layout	07LYN243
Eff. date	01-02-2025
CD Diagram	CD1084
Poles	04
Leads	2#10 A PH,2#14 B PH
Proprietary	False
Created date	03-18-2015

KVA Code	F
Lifting Lugs	Standard Lifting Lugs
Locked Bearing Indicator	Locked Bearing
Motor Lead Exit	Cap Box
Motor Lead Quantity/Wire Size	2 @ 10 AWG, A PH
Motor Lead Termination	Flying Leads
Motor Standards	NEMA
Motor Type	0748LC
Mounting Arrangement	F1
Number of Poles	4
Overall Length	19.45 IN
Power Factor	98
Product Family	General Purpose
Pulley End Bearing Type	Ball
Pulley Face Code	Standard
Pulley Shaft Indicator	Standard
Rodent Screen	None
Service Factor	1.00
Shaft Diameter	1.375 IN
Shaft Extension Location	Pulley End
Shaft Ground Indicator	No Shaft Grounding
Shaft Rotation	Reversible
Shaft Slinger Indicator	Shaft Slinger
Speed	1740 rpm
Speed Code	Single Speed
Starting Method	Direct on line
Thermal Device - Bearing	None
Thermal Device - Winding	Normally Closed Thermostat
Vibration Sensor Indicator	No Vibration Sensor
Winding Thermal 1	None
Winding Thermal 2	None

Nameplate

NP1279L									
CAT.NO.	GDL3774T								
SPEC.	07N243Y838G1								
HP	10								
VOLTS	230								
AMP	38								
RPM	1740								
FRAME	215TZ	HZ	60	PH	1				
SER.F.	1.00	CODE	F	DES	L	CL	F		
NEMA-NOM-EFF	86.5	PF	98						
RATING	40C AMB-CONT								
CC									
DE	6307	ODE	6206						
ENCL	TEFC	SN							

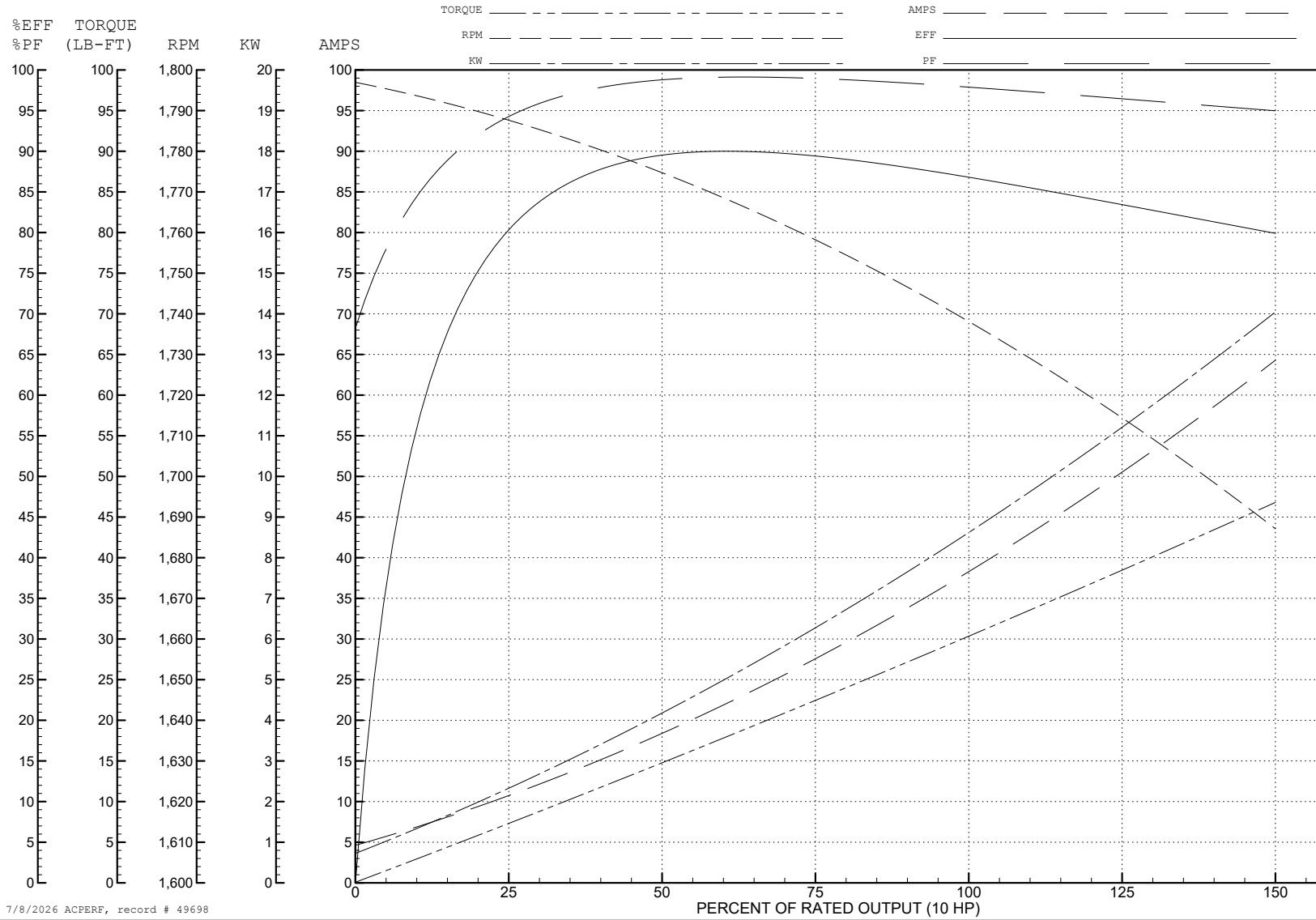
ABB Motors and Mechanical Inc.

WINDING # 07WGY838

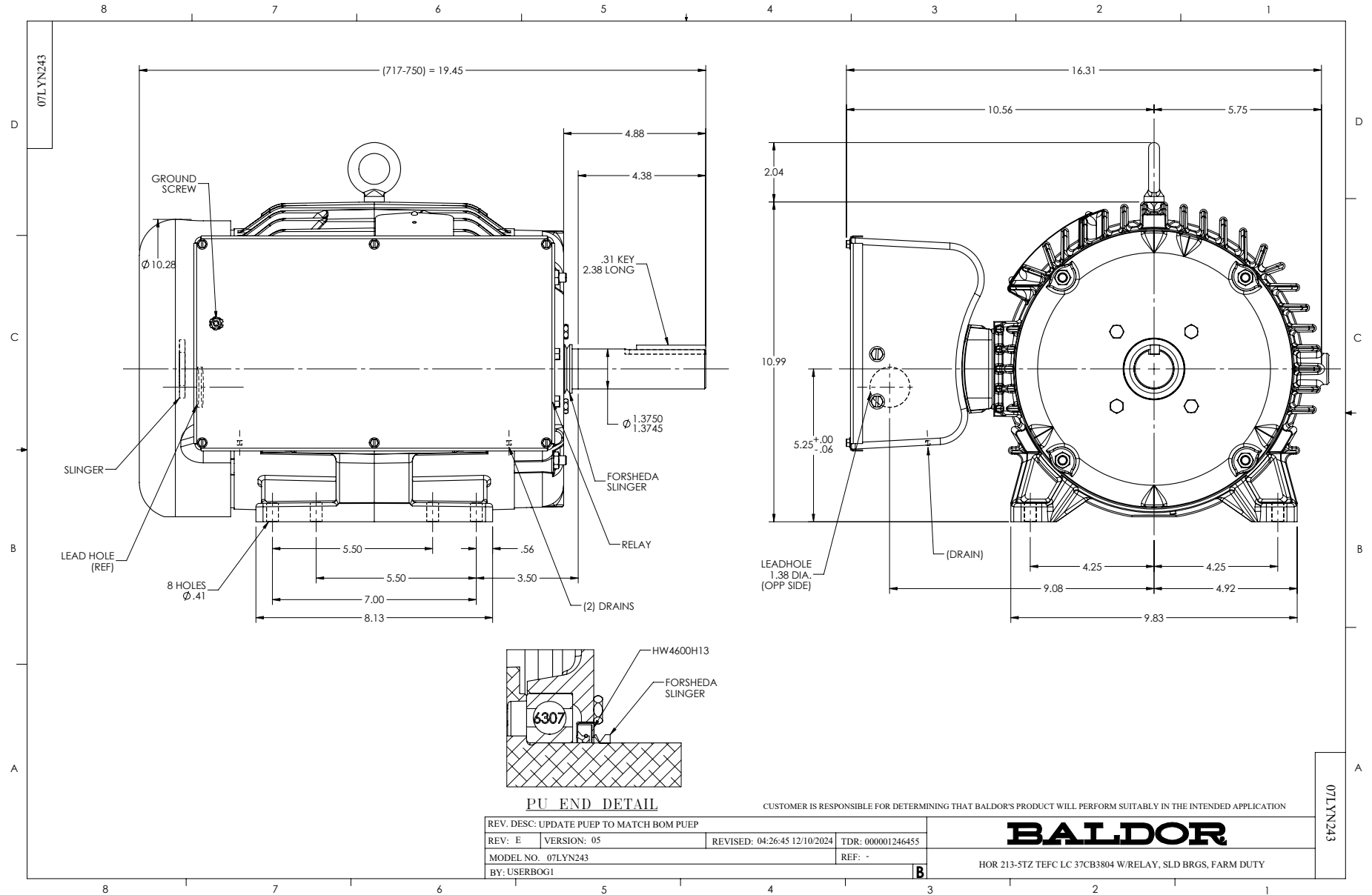
Typical performance - not guaranteed values.

10 HP 1 PH 60 HZ 1740 RPM 230 V 0748LC

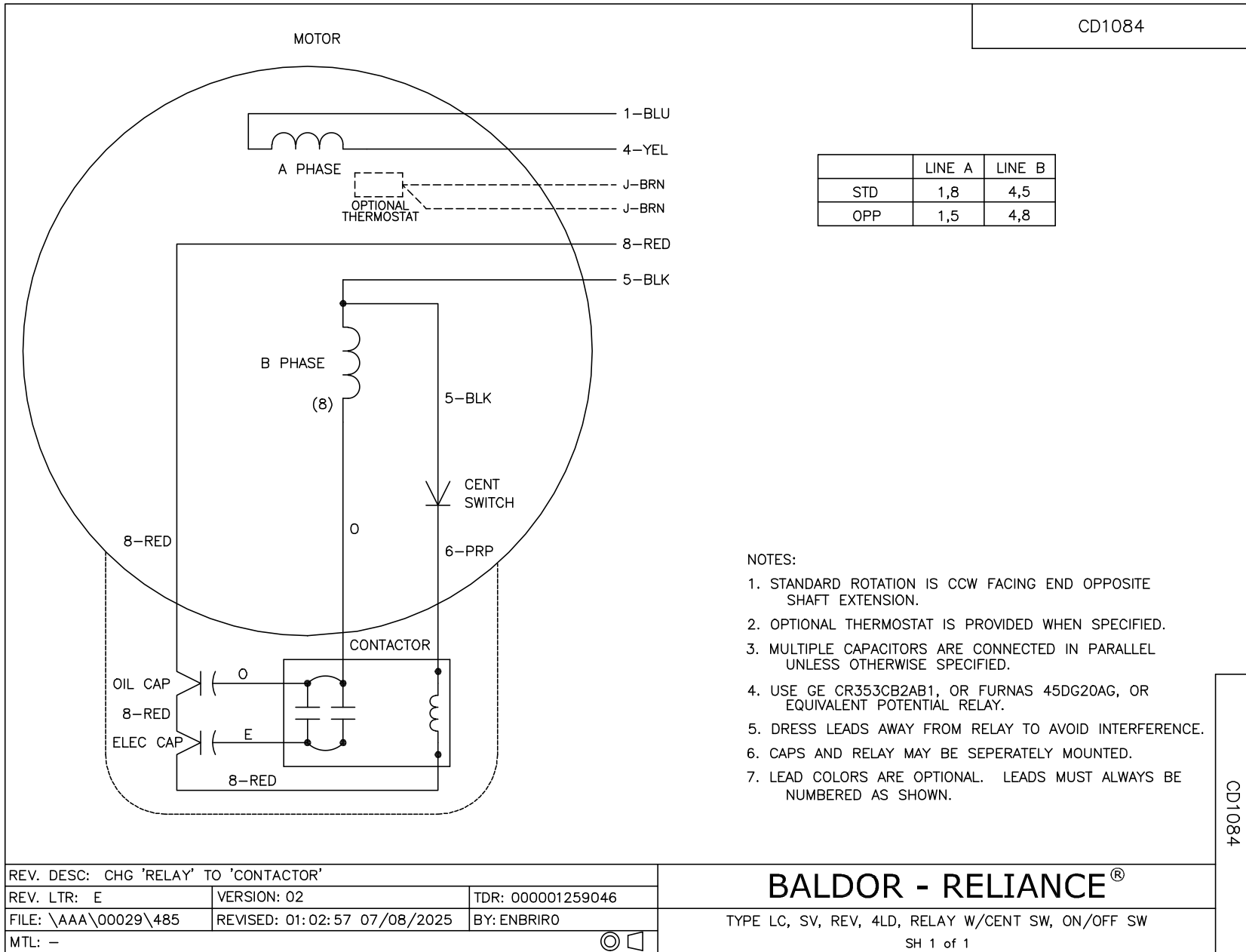
TORQUES (LB-FT): PO=78.7 PU=58 LR=78.1 LRA=232



7/8/2026 ACPERF, record # 49698



CD1084



	LINE A	LINE B
STD	1,8	4,5
OPP	1,5	4,8

- NOTES:
1. STANDARD ROTATION IS CCW FACING END OPPOSITE SHAFT EXTENSION.
 2. OPTIONAL THERMOSTAT IS PROVIDED WHEN SPECIFIED.
 3. MULTIPLE CAPACITORS ARE CONNECTED IN PARALLEL UNLESS OTHERWISE SPECIFIED.
 4. USE GE CR353CB2AB1, OR FURNAS 45DG20AG, OR EQUIVALENT POTENTIAL RELAY.
 5. DRESS LEADS AWAY FROM RELAY TO AVOID INTERFERENCE.
 6. CAPS AND RELAY MAY BE SEPERATELY MOUNTED.
 7. LEAD COLORS ARE OPTIONAL. LEADS MUST ALWAYS BE NUMBERED AS SHOWN.

CD1084

REV. DESC: CHG 'RELAY' TO 'CONTACTOR'		
REV. LTR: E	VERSION: 02	TDR: 000001259046
FILE: \AAA\00029\485	REVISED: 01:02:57 07/08/2025	BY: ENBRIRO
MTL: -		© □

BALDOR - RELIANCE®

TYPE LC, SV, REV, 4LD, RELAY W/CENT SW, ON/OFF SW

SH 1 of 1