

BALDOR • RELIANCE

Customer information packet

GDL3770T

7.5HP, 1750RPM, 1PH, 60HZ, 215TZ, 0743LC, TEFC

Class - None

Division - Not Applicable

Specifications

Enclosure	TEFC
Frame	215TZ
Frame Material	Iron
Frequency	60.00 Hz
Haz Area Class and Group	None
Haz Area Division	Not Applicable
Motor Letter Type	Cap Start, Cap Run
Output @ Frequency	7.500 HP @ 60 HZ
Phase	1
Synchronous Speed @ Frequency	1800 RPM @ 60 HZ
Voltage @ Frequency	230.0 V @ 60 HZ
Agency Approvals	UR CSA
Ambient Temperature	40 °C
Auxillary Box	No Auxillary Box
Auxillary Box Lead Termination	None
Base Indicator	Rigid
Bearing Grease Type	Polyrex EM (-20F +300F)
Blower	None
Current @ Voltage	29.600 A @ 230.0 V
Design Code	L
Drip Cover	No Drip Cover
Duty Rating	CONT
Efficiency @ 100% Load	85.5 %
Electrically Isolated Bearing	Not Electrically Isolated
Feedback Device	NO FEEDBACK
Front Face Code	Standard
Front Shaft Indicator	None
Heater Indicator	No Heater
High Voltage Full Load Amps	29.6 a
Insulation Class	F
Inverter Code	Not Inverter

Part detail

Revision	H
Type	AC
Mech. spec.	07N243
Base	
Status	PRD/A
Elec. spec.	07WGR851
Layout	07LYN243
Eff. date	01-02-2025
CD Diagram	CD1084
Poles	04
Leads	2#10 A PH,2#14 B PH
Proprietary	False
Created date	08-31-2015

KVA Code	G
Lifting Lugs	Standard Lifting Lugs
Locked Bearing Indicator	Locked Bearing
Motor Lead Exit	Cap Box
Motor Lead Quantity/Wire Size	2 @ 10 AWG, A PH
Motor Lead Termination	Flying Leads
Motor Standards	NEMA
Motor Type	0743LC
Mounting Arrangement	F1
Number of Poles	4
Overall Length	19.45 IN
Power Factor	96
Product Family	General Purpose
Pulley End Bearing Type	Ball
Pulley Face Code	Standard
Pulley Shaft Indicator	Standard
Rodent Screen	None
Service Factor	1.15
Shaft Diameter	1.375 IN
Shaft Extension Location	Pulley End
Shaft Ground Indicator	No Shaft Grounding
Shaft Rotation	Reversible
Shaft Slinger Indicator	Shaft Slinger
Speed	1750 rpm
Speed Code	Single Speed
Starting Method	Direct on line
Thermal Device - Bearing	None
Thermal Device - Winding	Normally Closed Thermostat
Vibration Sensor Indicator	No Vibration Sensor
Winding Thermal 1	None
Winding Thermal 2	None

Nameplate

NP1279L									
CAT.NO.	GDL3770T								
SPEC.	07N243R851G1								
HP	7.5								
VOLTS	230								
AMP	29.6								
RPM	1750								
FRAME	215TZ	HZ	60	PH	1				
SER.F.	1.15	CODE	G	DES	L	CL	F		
NEMA-NOM-EFF	85.5	PF	96						
RATING	40C AMB-CONT								
CC									
DE	6307	ODE	6206						
ENCL	TEFC	SN							

AC Induction Motor Performance Data

Record # 54919

Typical performance - not guaranteed values

Winding: 07WGR851-R001		Type: 0743LC	Enclosure: TEFC		
Nameplate Data			230 V, 60 Hz: Single Voltage Motor		
Rated Output (HP)	7.5	Full Load Torque	22.5 LB-FT		
Volts	230	Start Configuration	direct on line		
Full Load Amps	29.6	Breakdown Torque	63 LB-FT		
R.P.M.	1750	Pull-up Torque	43.4 LB-FT		
Hz	60 Phase	1	Locked-rotor Torque	57.6 LB-FT	
NEMA Design Code	L	KVA Code	G	Starting Current	205 A
Service Factor (S.F.)	1.15	No-load Current	6.5 A		
NEMA Nom. Eff.	85.5	Power Factor	96	Line-line Res. @ 25°C	0.25082 Ω A Ph 0.73066 Ω B Ph
Rating - Duty	40C AMB-CONT		Temp. Rise @ Rated Load	72°C	
S.F. Amps			Temp. Rise @ S.F. Load	89°C	

Load Characteristics 230 V, 60 Hz, 7.5 HP

% of Rated Load	25	50	75	100	125	150	S.F.
Power Factor	86	93	95	96	96	95	96
Efficiency	70.5	82.3	85.7	85.9	84.4	81.4	85
Speed	1788.6	1778.5	1767.2	1754.5	1739.1	1719.1	1745
Line amperes	10.1	16	22.4	29.6	37.7	47.4	34.5

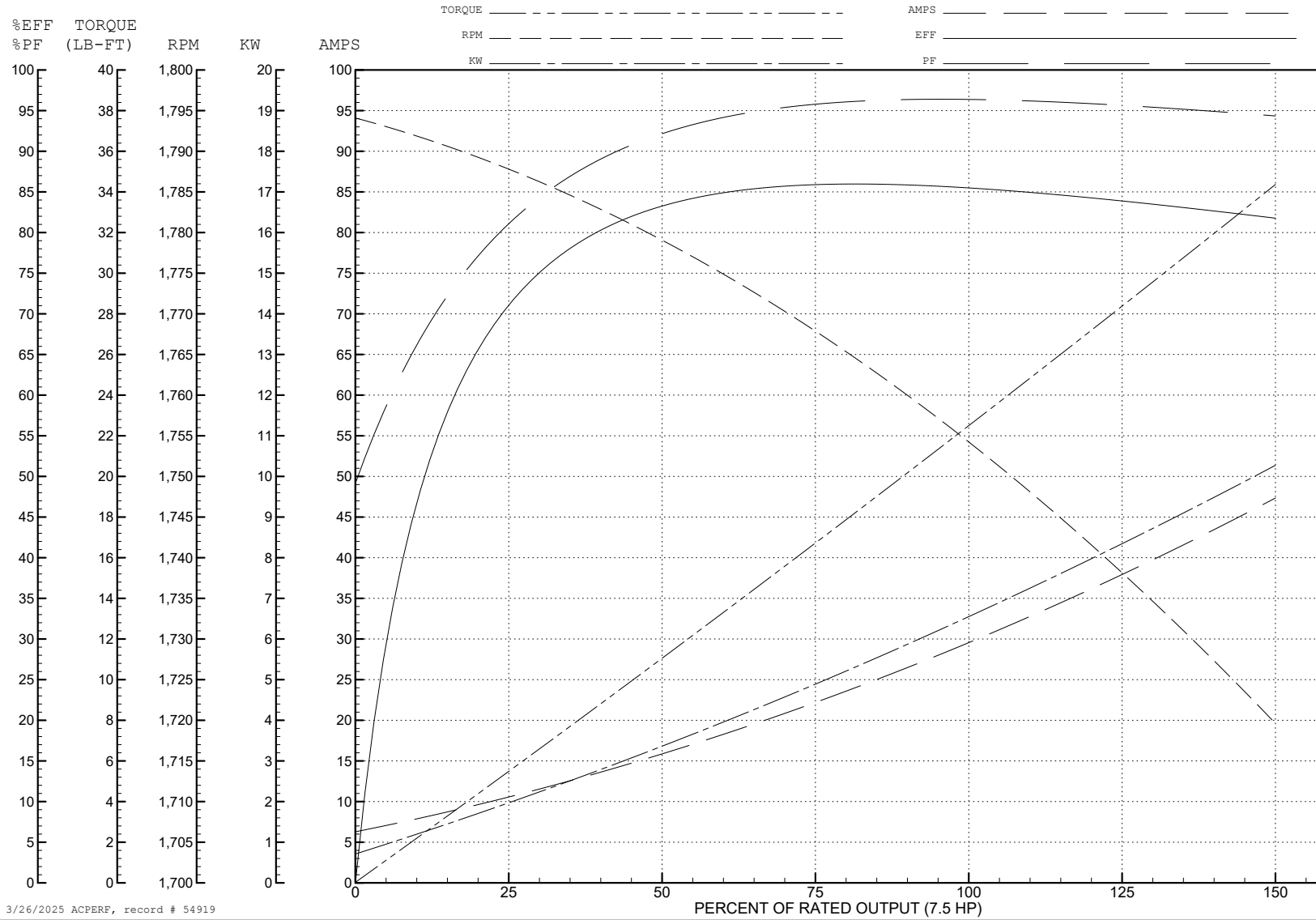
ABB Motors and Mechanical Inc.

WINDING # 07WGR851

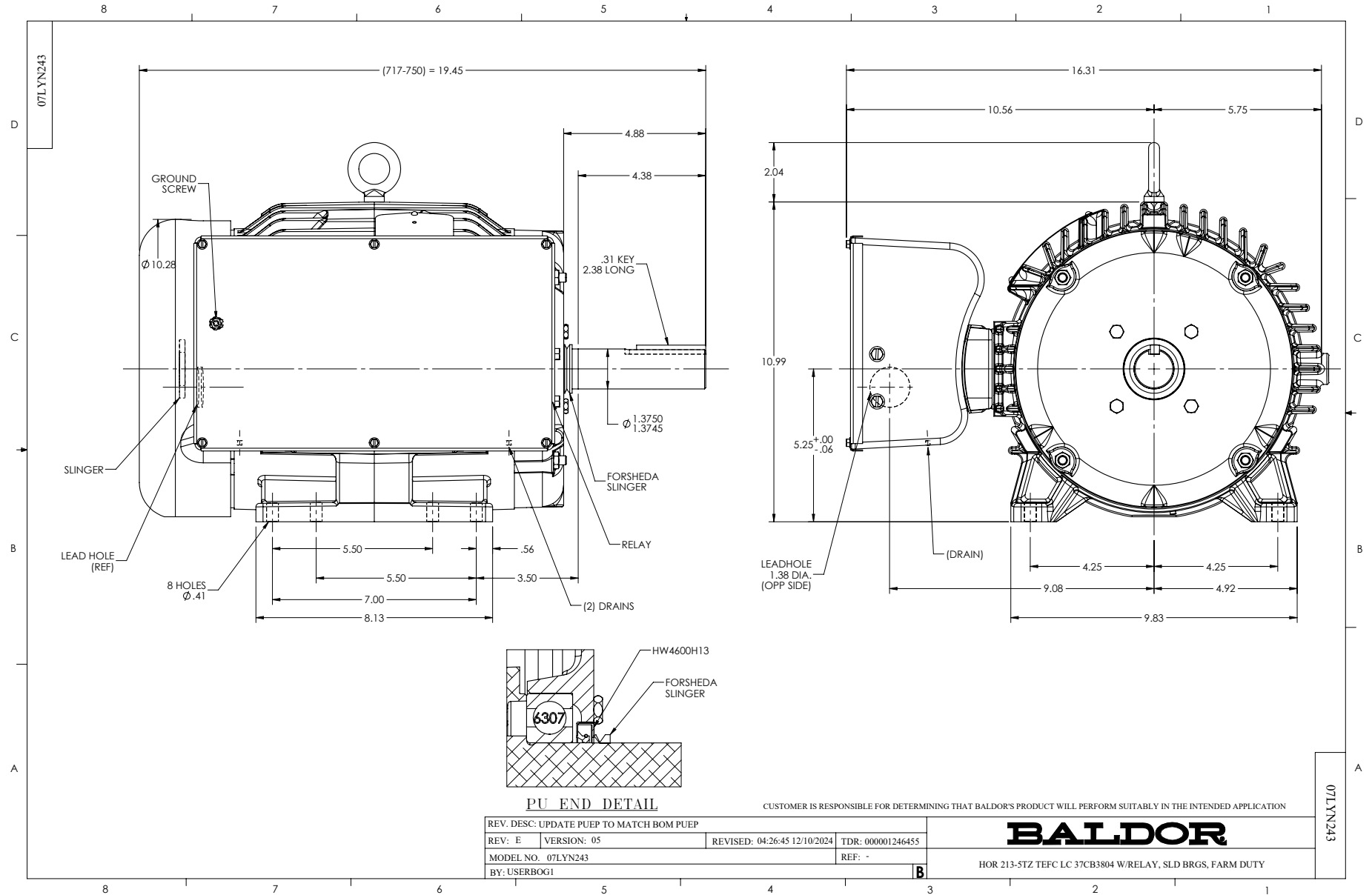
Typical performance - not guaranteed values.

7.5 HP 1 PH 60 HZ 1750 RPM 230 V 0743LC

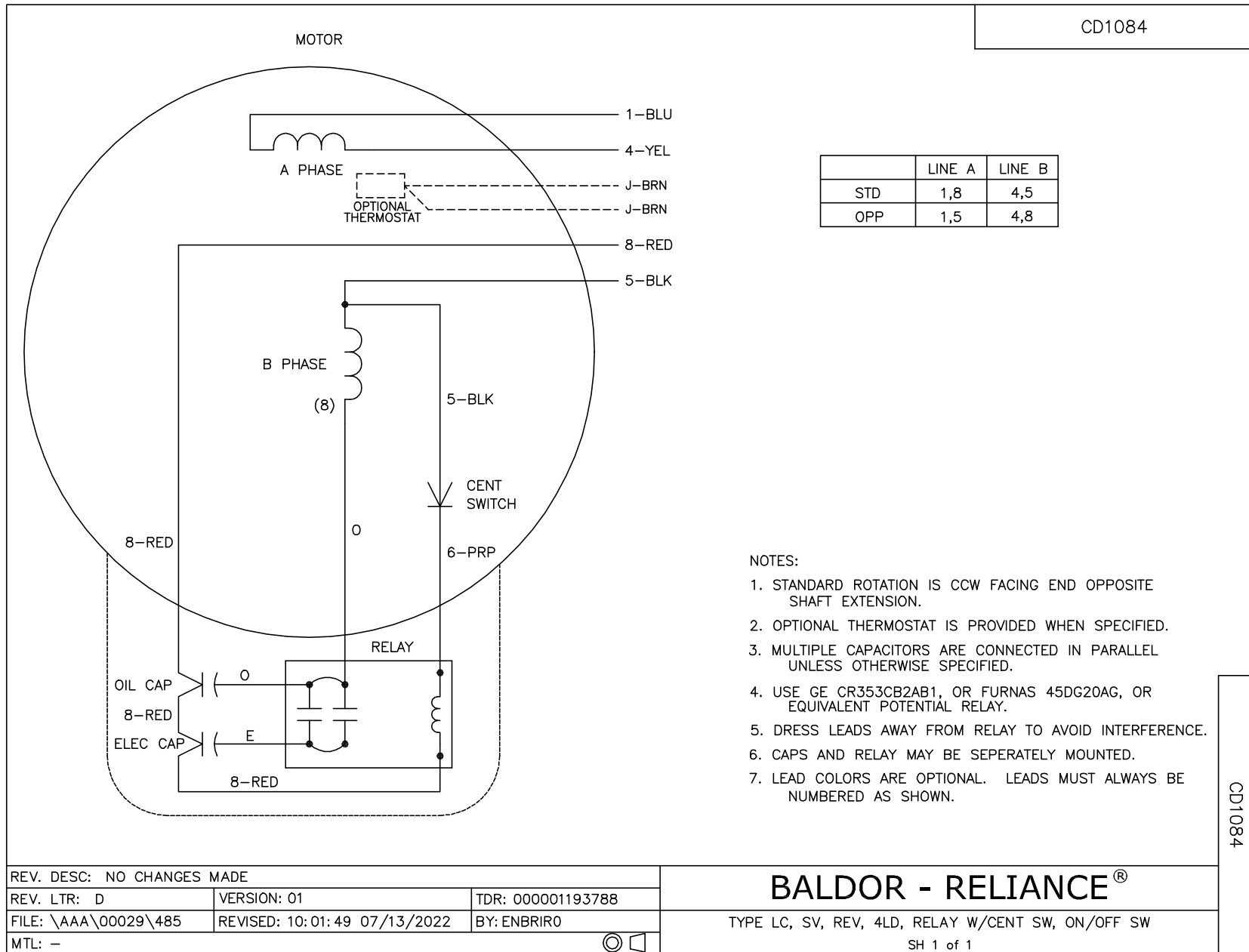
TORQUES (LB-FT): PO=63 PU=43.4 LR=57.6 LRA=205



3/26/2025 ACPERF, record # 54919



CD1084



	LINE A	LINE B
STD	1,8	4,5
OPP	1,5	4,8

NOTES:

1. STANDARD ROTATION IS CCW FACING END OPPOSITE SHAFT EXTENSION.
2. OPTIONAL THERMOSTAT IS PROVIDED WHEN SPECIFIED.
3. MULTIPLE CAPACITORS ARE CONNECTED IN PARALLEL UNLESS OTHERWISE SPECIFIED.
4. USE GE CR353CB2AB1, OR FURNAS 45DG20AG, OR EQUIVALENT POTENTIAL RELAY.
5. DRESS LEADS AWAY FROM RELAY TO AVOID INTERFERENCE.
6. CAPS AND RELAY MAY BE SEPERATELY MOUNTED.
7. LEAD COLORS ARE OPTIONAL. LEADS MUST ALWAYS BE NUMBERED AS SHOWN.

CD1084

REV. DESC: NO CHANGES MADE		
REV. LTR: D	VERSION: 01	TDR: 000001193788
FILE: \AAA\00029\485	REVISED: 10:01:49 07/13/2022	BY: ENBRIRO
MTL: -		© □

BALDOR - RELIANCE®

TYPE LC, SV, REV, 4LD, RELAY W/CENT SW, ON/OFF SW
SH 1 of 1