

BALDOR • RELIANCE

Customer information packet

FSWDM3615T-E

5HP, 1750RPM, 3PH, 60HZ, 184T, 3646M, TEFC, F1

Part detail

Revision	H
Type	AC
Mech. spec.	36R625
Base	
Status	PRD/A
Elec. spec.	36WGS953
Layout	36LYR625
Eff. date	06-19-2023
CD Diagram	CD0005
Poles	04
Leads	9#16
Proprietary	False
Created date	09-26-2018

AC Induction Motor Performance Data

Record # 57384

Typical performance - not guaranteed values

Winding: 36WGS953-R006		Type: 3646M	Enclosure: TEFC	
Nameplate Data			460 V, 60 Hz: High Voltage Connection	
Rated Output (HP)	5	Full Load Torque	15.03 LB-FT	
Volts	230/460	Start Configuration	direct on line	
Full Load Amps	13/6.5	Breakdown Torque	57.4 LB-FT	
R.P.M.	1750	Pull-up Torque	28.9 LB-FT	
Hz	60 Phase	Locked-rotor Torque	32.3 LB-FT	
NEMA Design Code	B KVA Code	Starting Current	47.9 A	
Service Factor (S.F.)	1.15	No-load Current	2.91 A	
NEMA Nom. Eff.	89.5 Power Factor	Line-line Res. @ 25°C	2.34 Ω	
Rating - Duty	40C AMB-CONT	Temp. Rise @ Rated Load	75°C	
S.F. Amps		Temp. Rise @ S.F. Load	91°C	
		Locked-rotor Power Factor	39	
		Rotor inertia	0.428 lb-ft ²	

Load Characteristics 460 V, 60 Hz, 5 HP

% of Rated Load	25	50	75	100	125	150	S.F.
Power Factor	42	64	75	90	83	84	86
Efficiency	86.7	90.5	90.8	89.3	88.4	86.6	88.8
Speed	1788	1776	1763	1748	1732	1714	1738
Line amperes	3.27	4.1	5.2	6.53	8.02	9.69	7.42

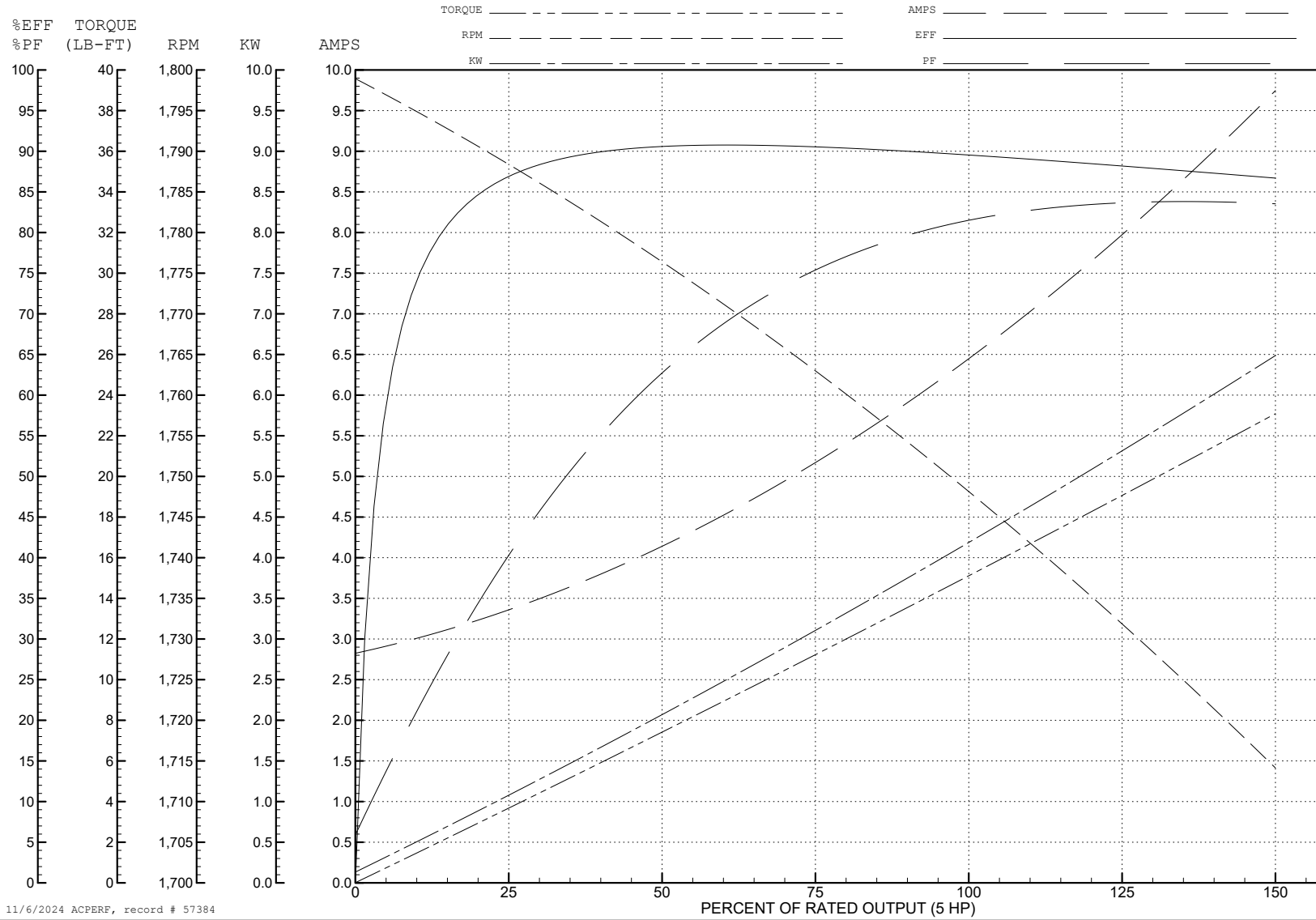
ABB Motors and Mechanical Inc.

WINDING # 36WGS953

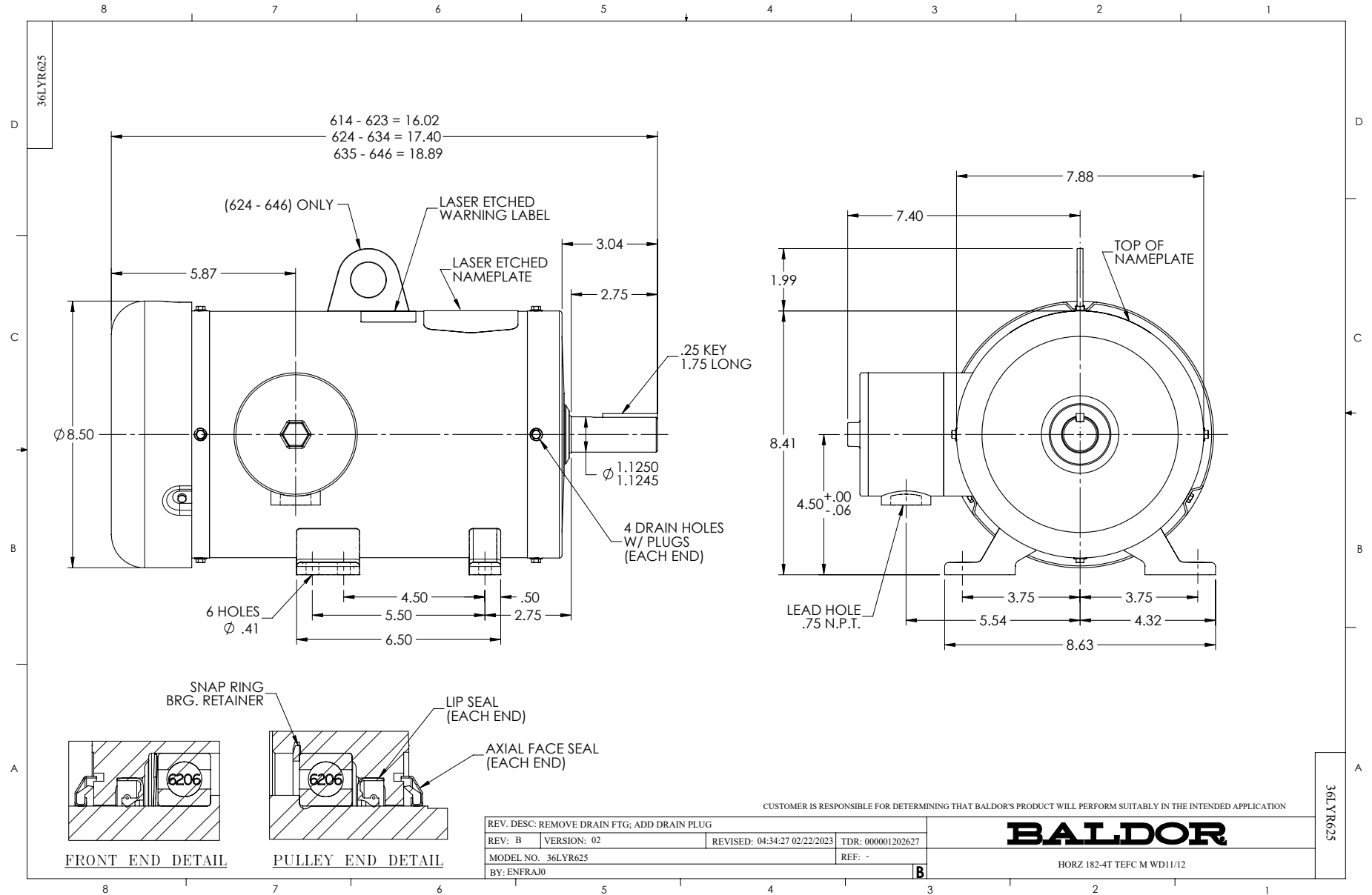
5 HP 3 PH 60 HZ 1750 RPM 460 V 3646M

Typical performance - not guaranteed values.

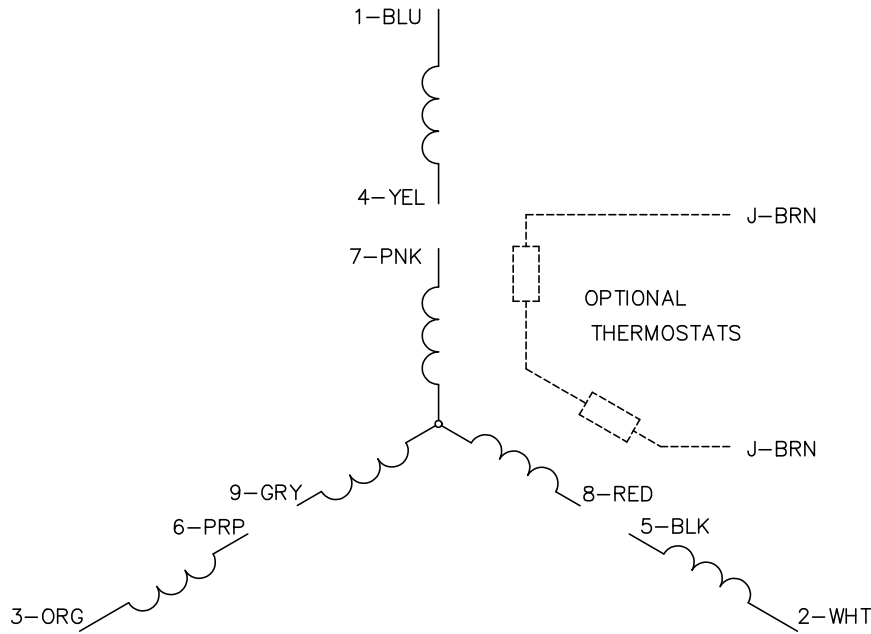
TORQUES (LB-FT): PO=57.4 PU=28.9 LR=32.3 LRA=47.9



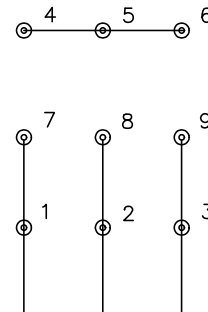
11/6/2024 ACPERF, record # 57384



CD0005

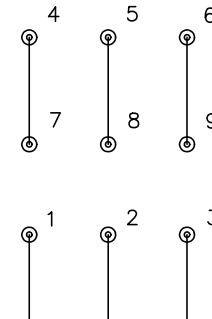


LOW VOLTAGE
(2Y)



LINE

HIGH VOLTAGE
(1Y)



LINE

NOTES:

1. INTERCHANGE ANY TWO LINE LEADS TO REVERSE ROTATION.
2. OPTIONAL THERMOSTATS ARE PROVIDED WHEN SPECIFIED.
3. ACTUAL NUMBER OF INTERNAL PARALLEL CIRCUITS MAY BE A MULTIPLE OF THOSE SHOWN ABOVE.
4. LEAD COLORS ARE OPTIONAL. LEADS MUST ALWAYS BE NUMBERED AS SHOWN.

CD0005

REV. DESC: REVISE TO SHOW OPTIONAL COLORS			
REV. LTR: E	BY: JLP	REVISED: 01/19/99 10:15	TDR: 0171435
S00000		FILE: AAA00005140	MDL: -
		MTL: -	

BALDOR ELECTRIC Co.

3PH, DV, 9 LEADS