

BALDOR • RELIANCE

Customer information packet

FPM3313T

10//7.5HP, 1760//1460RPM, 3PH, 60//50HZ, 215

Class - None

Division - Not Applicable

Specifications

Enclosure	OPSB
Frame	215T
Frame Material	Steel
Frequency	50.00 Hz 60.00 Hz
Haz Area Class and Group	None
Haz Area Division	Not Applicable
Motor Letter Type	Three Phase
Output @ Frequency	7.500 HP @ 50 HZ 10.000 HP @ 60 HZ
Phase	3
Synchronous Speed @ Frequency	1500 RPM @ 50 HZ
Voltage @ Frequency	460.0 V @ 60 HZ 190.0 V @ 50 HZ 230.0 V @ 60 HZ 380.0 V @ 50 HZ
Agency Approvals	UL CSA EEV
Ambient Temperature	40 °C
Auxillary Box	No Auxillary Box
Auxillary Box Lead Termination	None
Base Indicator	Rigid
Bearing Grease Type	Polyrex EM (-20F +300F)
Blower	None
Current @ Voltage	11.700 A @ 380.0 V 12.700 A @ 460.0 V 23.400 A @ 190.0 V 25.400 A @ 230.0 V
Design Code	B
Drip Cover	No Drip Cover
Duty Rating	CONT
Efficiency @ 100% Load	89.5 %

Part detail

Revision	K
Type	AC
Mech. spec.	37N755
Base	
Status	PRD/A
Elec. spec.	37WGR912
Layout	37LYN755
Eff. date	08-16-2022
CD Diagram	CD0005
Poles	04
Leads	9#14
Proprietary	False
Created date	12-22-2015

Electrically Isolated Bearing	Not Electrically Isolated
Feedback Device	NO FEEDBACK
Front Face Code	Standard
Front Shaft Indicator	None
Heater Indicator	No Heater
High Voltage Full Load Amps	11.7 a
Insulation Class	F
Inverter Code	Not Inverter
KVA Code	H
Lifting Lugs	Standard Lifting Lugs
Locked Bearing Indicator	No Locked Bearing
Motor Lead Exit	Ko Box
Motor Lead Quantity/Wire Size	9 @ 14 AWG
Motor Lead Termination	Flying Leads
Motor Standards	NEMA
Motor Type	3738M
Mounting Arrangement	F1
Number of Poles	4
Overall Length	17.45 IN
Power Factor	82
Product Family	General Purpose
Pulley End Bearing Type	Ball
Pulley Face Code	Standard
Pulley Shaft Indicator	Standard
Rodent Screen	None
RoHS Status	ROHS COMPLIANT
Service Factor	1.15
Shaft Diameter	1.375 IN
Shaft Extension Location	Pulley End
Shaft Ground Indicator	No Shaft Grounding
Shaft Rotation	Reversible
Shaft Slinger Indicator	No Slinger
Speed	1465 rpm 1760 rpm

Speed Code	Single Speed
Starting Method	Direct on line
Thermal Device - Bearing	None
Thermal Device - Winding	None
Vibration Sensor Indicator	No Vibration Sensor
Winding Thermal 1	None
Winding Thermal 2	None

Nameplate

NP3454L

CAT.NO.	FPM3313T	CUST P/N		I.P.	23
SPEC.	37N755R912H1	SER.NO.		FRAME	215T
HZ	60	HP	10	RPM	1760
				HZ	50
				HP	7.5
				RPM	1465
VOLTS	230/460	CODE	H	VOLTS	190/380
		CODE	H		
AMPS	25.4/12.7	DES	B	AMPS	23.4/11.7
		DES	B		
EFF	89.5	SER.F.	1.15	PF	82
				EFF	89.5
				SER.F.	1.15
				PF	81
RATING	40C AMB-CONT	DE BRG	6307	GREASE	POLYREX EM
BLANK		ODE BRG	6206	MTR. WT.	130
		CLASS	F	PH	3
		ENCL	OPSB	CC	010A
HTR-VOLTS		HTR-AMPS		HTR-WATTS	

AC Induction Motor Performance Data

Record # 56055

Typical performance - not guaranteed values

Winding: 37WGR912-R001		Type: 3738M		Enclosure: OPSB	
Nameplate Data			460 V, 60 Hz: High Voltage Connection		
Rated Output (HP)	10//7.5		Full Load Torque	29.9 LB-FT	
Volts	230/460//190/380		Start Configuration	direct on line	
Full Load Amps	25.4/12.7//23.4/11.7		Breakdown Torque	86.5 LB-FT	
R.P.M.	1760//1465		Pull-up Torque	44.4 LB-FT	
Hz	60//50	Phase	3	Locked-rotor Torque	52.5 LB-FT
NEMA Design Code	B KVA Code		H	Starting Current	80.5 A
Service Factor (S.F.)			1.15	No-load Current	5.06 A
NEMA Nom. Eff.	89.5	Power Factor	82	Line-line Res. @ 25°C	1.2634 Ω
Rating - Duty			40C AMB-CONT	Temp. Rise @ Rated Load	45°C
S.F. Amps				Temp. Rise @ S.F. Load	56°C

Load Characteristics 460 V, 60 Hz, 10 HP

% of Rated Load	25	50	75	100	125	150	S.F.
Power Factor	47	68	77	82	83	84	83
Efficiency	87.5	91	91.1	90.3	88.9	87.2	89.5
Speed	1791.8	1783.2	1773	1762.5	1750.9	1737.4	1756
Line amperes	5.84	7.61	9.99	12.7	15.8	19.2	14.6

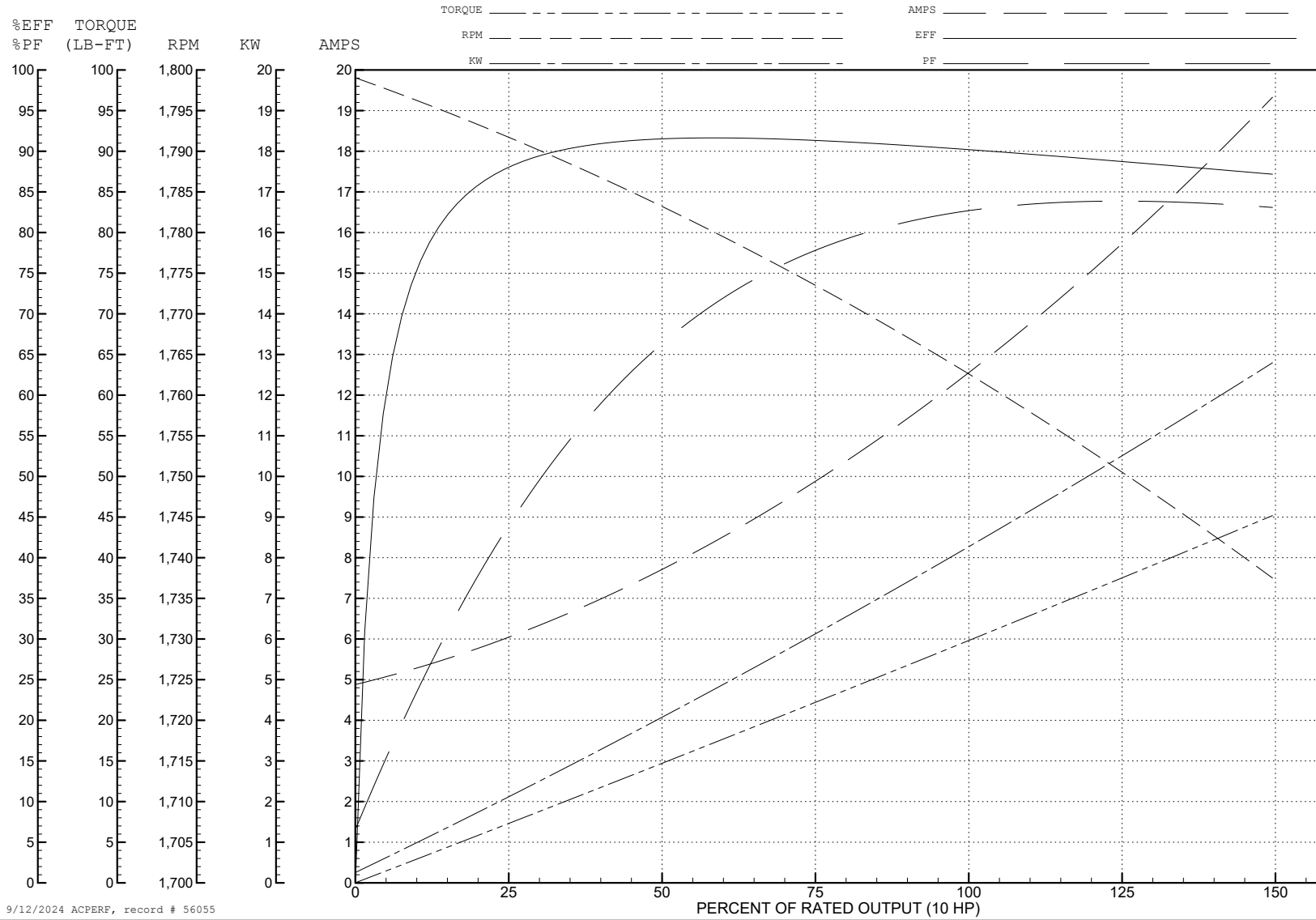
ABB Motors and Mechanical Inc.

WINDING # 37WGR912

Typical performance - not guaranteed values.

10 HP 3 PH 60 HZ 1762.5 RPM 460 V 3738M

TORQUES (LB-FT): PO=86.5 PU=44.4 LR=52.5 LRA=80.5



9/12/2024 ACPERF, record # 56055

AC Induction Motor Performance Data

Record # 56073

Typical performance - not guaranteed values

Winding: 37WGR912-R001		Type: 3738M		Enclosure: OPSB	
Nameplate Data			380 V, 50 Hz: High Voltage Connection		
Rated Output (HP)	10//7.5		Full Load Torque	27 LB-FT	
Volts	230/460//190/380		Start Configuration	direct on line	
Full Load Amps	25.4/12.7//23.4/11.7		Breakdown Torque	82.6 LB-FT	
R.P.M.	1760//1465		Pull-up Torque	45.8 LB-FT	
Hz	60//50	Phase	3	Locked-rotor Torque	53.2 LB-FT
NEMA Design Code	B KVA Code		H	Starting Current	75.1 A
Service Factor (S.F.)			1.15	No-load Current	4.96 A
NEMA Nom. Eff.	89.5	Power Factor	82	Line-line Res. @ 25°C	1.258 Ω
Rating - Duty			40C AMB-CONT	Temp. Rise @ Rated Load	41°C
S.F. Amps				Temp. Rise @ S.F. Load	51°C

Load Characteristics 380 V, 50 Hz, 7.5 HP

% of Rated Load	25	50	75	100	125	150	S.F.
Power Factor	44	66	77	81	84	84	83
Efficiency	86.8	90.6	91	90.2	88.9	87	89.4
Speed	1492.8	1485.3	1476.8	1467.6	1457.7	1444.8	1462
Line amperes	5.62	7.15	9.23	11.7	14.3	17.4	13.3

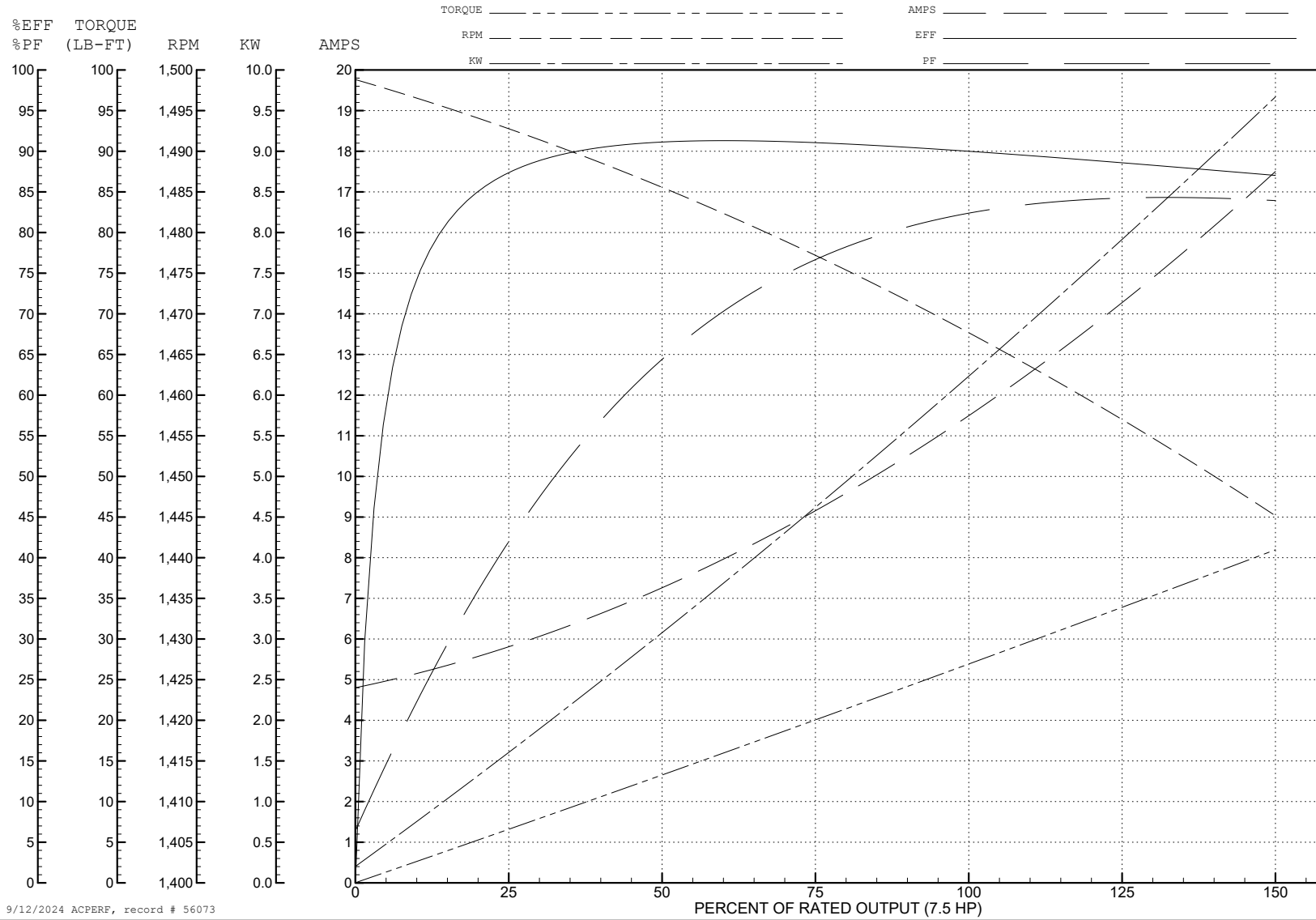
ABB Motors and Mechanical Inc.

WINDING # 37WGR912

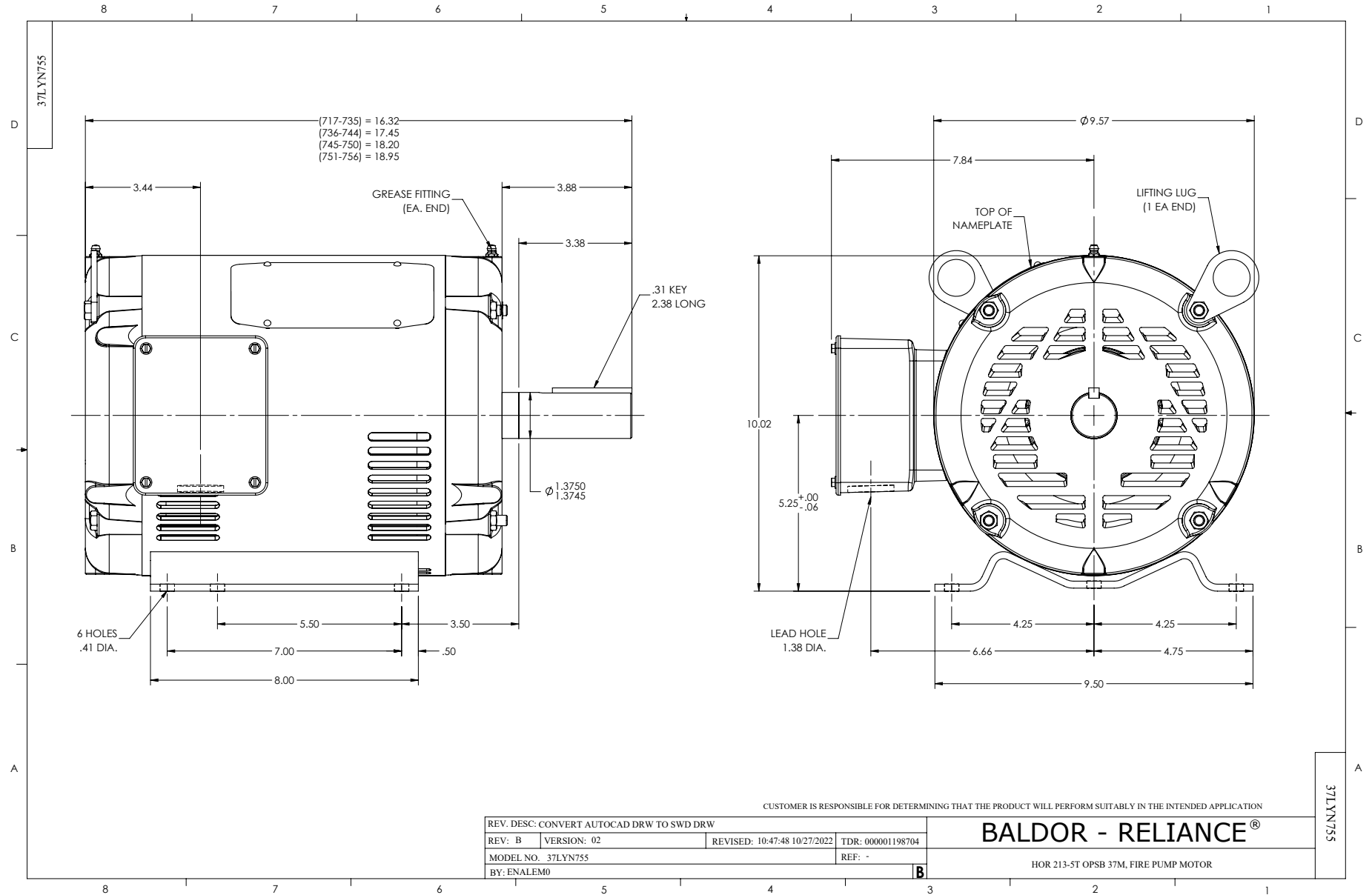
Typical performance - not guaranteed values.

7.5 HP 3 PH 50 HZ 1467.6 RPM 380 V 3738M

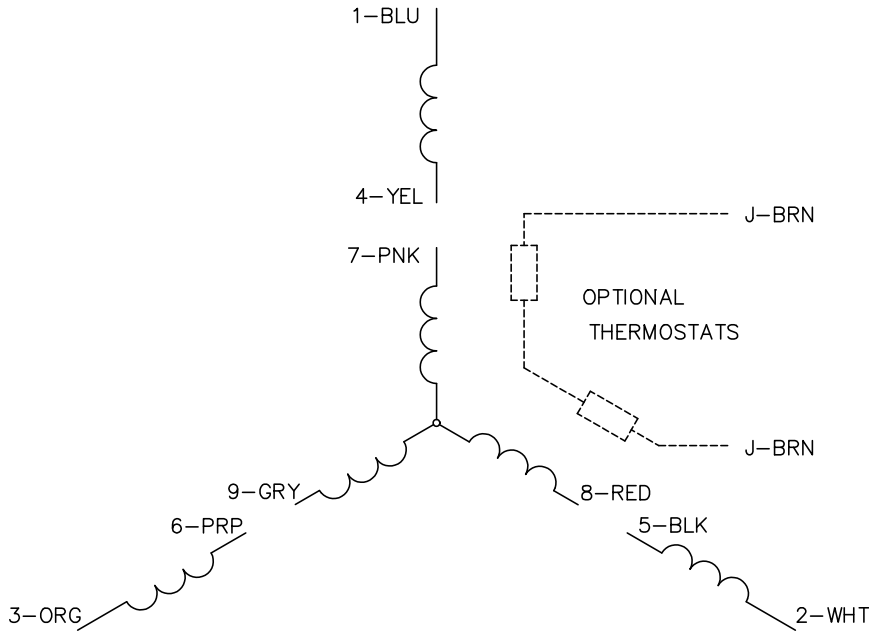
TORQUES (LB-FT): PO=82.6 PU=45.8 LR=53.2 LRA=75.1



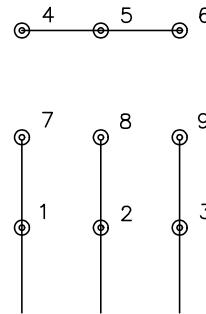
9/12/2024 ACPERF, record # 56073



CD0005

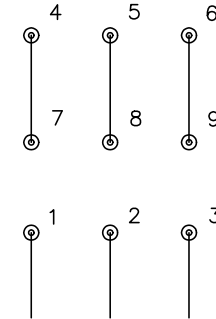


LOW VOLTAGE
(2Y)



LINE

HIGH VOLTAGE
(1Y)



LINE

NOTES:

1. INTERCHANGE ANY TWO LINE LEADS TO REVERSE ROTATION.
2. OPTIONAL THERMOSTATS ARE PROVIDED WHEN SPECIFIED.
3. ACTUAL NUMBER OF INTERNAL PARALLEL CIRCUITS MAY BE A MULTIPLE OF THOSE SHOWN ABOVE.
4. LEAD COLORS ARE OPTIONAL. LEADS MUST ALWAYS BE NUMBERED AS SHOWN.

CD0005

REV. DESC: REVISE TO SHOW OPTIONAL COLORS

REV. LTR: E BY: JLP REVISED: 01/19/99 10:15 TDR: 0171435

500000

FILE: AAA00005140

MDL: -

MTL: -

BALDOR ELECTRIC Co.

3PH, DV, 9 LEADS