



Customer information packet

FPM2568T-4

300/250HP, 60//50HZ, 2PL, 3PH, 445TS, OPEN

Class - None

Division - Not Applicable

Specifications

Enclosure	DP
Frame	445TS
Frame Material	Iron
Frequency	50.00 Hz 60.00 Hz
Motor Letter Type	Three Phase
Output @ Frequency	300.000 HP @ 60 HZ 250.000 HP @ 50 HZ
Phase	3
Synchronous Speed @ Frequency	3600 RPM @ 60 HZ
Voltage @ Frequency	380.0 V @ 50 HZ 460.0 V @ 60 HZ
XP Class and Group	None
XP Division	Not Applicable
Agency Approvals	CSA EEV CCSA US UL
Ambient Temperature	40 °C
Auxillary Box	No Auxillary Box
Base Indicator	Rigid
Bearing Grease Type	Polyrex EM (-20F +300F)
Current @ Voltage	339.000 A @ 460.0 V 342.000 A @ 380.0 V
Design Code	B
Drip Cover	No Drip Cover
Duty Rating	CONT
Efficiency @ 100% Load	95.0 %
Feedback Device	NO FEEDBACK
Heater Indicator	No Heater
High Voltage Full Load Amps	339.0 a
Insulation Class	F
Inverter Code	Not Inverter

Part detail

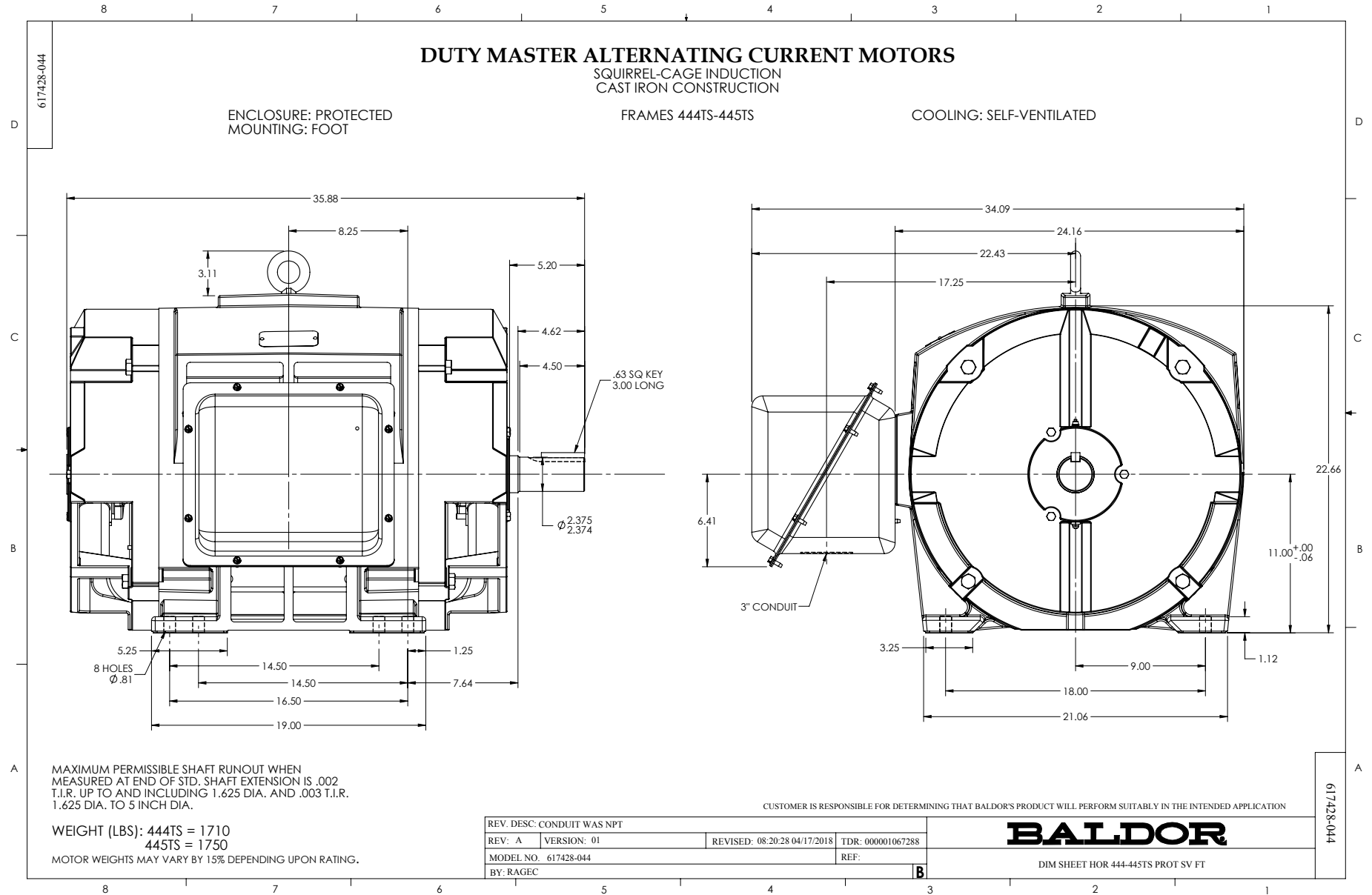
Revision	E
Type	AC
Mech. spec.	
Base	
Status	PRD/A
Elec. spec.	A44WG5468
Layout	617428-044
Eff. date	02-01-2017
CD Diagram	421948-079
Poles	02
Leads	12#2
Proprietary	False
Created date	12-18-2015

KVA Code	F
Lifting Lugs	No Lifting Lugs
Motor Lead Quantity/Wire Size	12 @ 2 AWG
Motor Standards	NEMA
Motor Type	A44072M
Mounting Arrangement	F1
Number of Poles	2
Overall Length	35.88 IN
Power Factor	87
Product Family	Other
Pulley End Bearing Type	Ball
Pulley Face Code	Standard
Service Factor	1.15
Shaft Ground Indicator	No Shaft Grounding
Shaft Rotation	Reversible
Shaft Slinger Indicator	No Slinger
Speed	2960 rpm 3560 rpm
Speed Code	Single Speed
Starting Method	Wye Start - Delta Run
Thermal Device - Bearing	None
Thermal Device - Winding	None

Nameplate

NP3488L

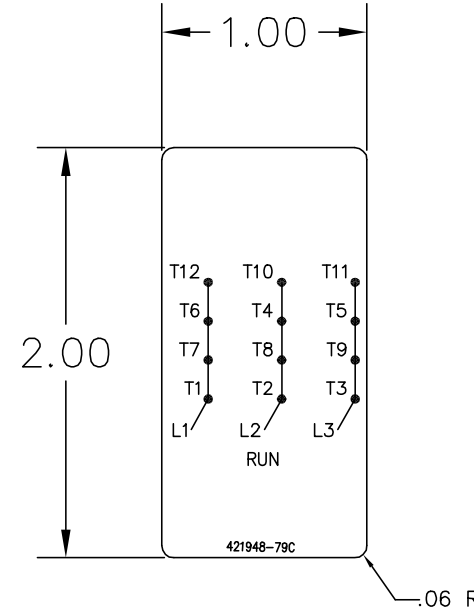
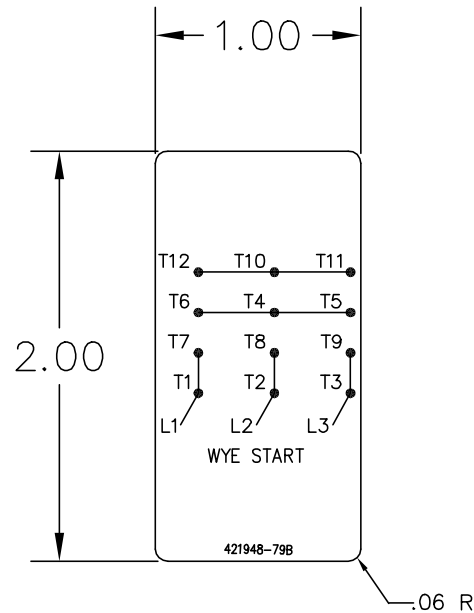
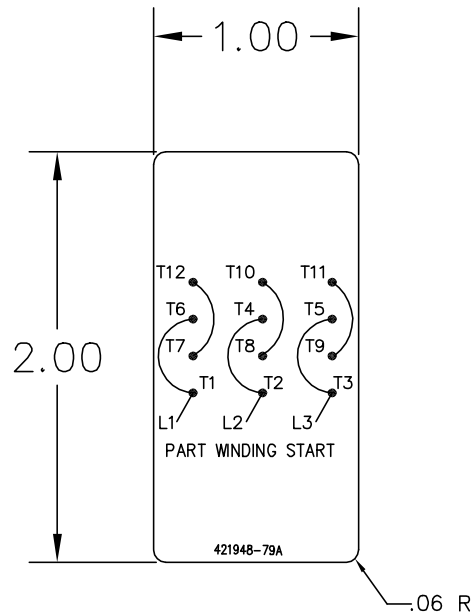
CAT.NO.	FPM2568T-4	CUST P/N		I.P.	
SPEC.	P44G1855	SER.NO.		FRAME	445TS
HZ	60	HP	300	RPM	3560
				HZ	50
				HP	250
				RPM	2960
VOLTS	460	CODE	F	VOLTS	380
		CODE	F		
AMPS	339	DES	B	AMPS	342
		DES	B		
EFF	95	SER.F.	1.15	PF	87
				EFF	94.7
				SER.F.	1.15
				PF	87
RATING	40C AMB-CONT		DE BRG	65BC03J30X	
			GREASE	POLYREX EM	
BLANK			ODE BRG	65BC03J30X	
			MTR. WT.	1549	
			CLASS	F	PH 3
			ENCL	DP	CC 010A
HTR-VOLTS		HTR-AMPS		HTR-WATTS	
				MAX. SPACE HEATER TEMP.	



421948-079

TOLERANCE UNLESS OTHERWISE SHOWN
 ONE PLACE DECIMAL ±.1
 TWO PLACE DECIMAL ±.02
 THREE PLACE DECIMAL ±.003
 ANGLE ±0°-30'

SURFACE FINISH 250



MATERIAL SPECIFICATION: .005 THICK DULL SILVER MYLAR,
 TOPCOAT-ARMORCOTE, PS ADHESIVE, LABEL MUST MEET THE
 REQUIREMENTS AS SPECIFIED IN CANADIAN STANDARDS
 ASSOCIATION: "CSA TESTING LABORATORIES TEST PROGRAM
 FOR ADHESIVE TYPE NAMEPLATES".
 LETTERING: UNIVERSAL TYPE UNLESS OTHERWISE SPECIFIED.
 COLORS: 1) BLACK ON NATURAL BACKGROUND

REF: 410961-66A

-	1	421948-79C	RUN CONNECTION
-	1	421948-79B	WYE START
-	1	421948-79A	PART WINDING START
-	R	PART	DESCRIPTION

GROUP
GROUP

421948-079

REV. DESC:		
REV. LTR: A	VERSION: 01	TDR: 00000591489
FILE: \RAG\00013\521	REVISED: 01:12:47 04/18/2011	
MTL: -	BY: RAGBRP	

BALDOR

MYLAR 12 LEAD PWS OR WYE-DELTA WIRING DIAGRAM

SH 1 of 1