

**BALDOR • RELIANCE**

---

# Customer information packet

## FPM2547TS-5

60HP, 1770RPM, 3PH, 60HZ, 364TS, 4252M, ODP, F1

## Specifications

|                                |                           |
|--------------------------------|---------------------------|
| Enclosure                      | ODP                       |
| Frame                          | 364TS                     |
| Frame Material                 | Steel                     |
| Frequency                      | 60.00 Hz                  |
| Motor Letter Type              | Three Phase               |
| Output @ Frequency             | 60.000 HP @ 60 HZ         |
| Phase                          | 3                         |
| Synchronous Speed @ Frequency  | 1800 RPM @ 60 HZ          |
| Voltage @ Frequency            | 575.0 V @ 60 HZ           |
| Agency Approvals               | CSA EEV<br>UL             |
| Ambient Temperature            | 40 °C                     |
| Auxillary Box                  | No Auxillary Box          |
| Auxillary Box Lead Termination | None                      |
| Base Indicator                 | Rigid                     |
| Bearing Grease Type            | Polyrex EM (-20F +300F)   |
| Blower                         | None                      |
| Current @ Voltage              | 57.000 A @ 575.0 V        |
| Design Code                    | B                         |
| Drip Cover                     | No Drip Cover             |
| Duty Rating                    | CONT                      |
| Efficiency @ 100% Load         | 93.6 %                    |
| Electrically Isolated Bearing  | Not Electrically Isolated |
| Feedback Device                | NO FEEDBACK               |
| Front Face Code                | Standard                  |
| Front Shaft Indicator          | None                      |
| Heater Indicator               | No Heater                 |
| High Voltage Full Load Amps    | 57.0 a                    |
| Insulation Class               | F                         |
| Inverter Code                  | Not Inverter              |
| KVA Code                       | F                         |
| Lifting Lugs                   | Standard Lifting Lugs     |

## Part detail

|              |            |
|--------------|------------|
| Revision     | G          |
| Type         | AC         |
| Mech. spec.  | 42F98      |
| Base         |            |
| Status       | PRD/A      |
| Elec. spec.  | 42WGX102   |
| Layout       | 42LYF098   |
| Eff. date    | 07-24-2023 |
| CD Diagram   | CD0382     |
| Poles        | 04         |
| Leads        | 6#8        |
| Proprietary  | False      |
| Created date | 07-20-2016 |

|                                      |                       |
|--------------------------------------|-----------------------|
| <b>Locked Bearing Indicator</b>      | Locked Bearing        |
| <b>Motor Lead Exit</b>               | Ko Box                |
| <b>Motor Lead Quantity/Wire Size</b> | 6 @ 8 AWG             |
| <b>Motor Lead Termination</b>        | Flying Leads          |
| <b>Motor Standards</b>               | NEMA                  |
| <b>Motor Type</b>                    | 4252M                 |
| <b>Mounting Arrangement</b>          | F1                    |
| <b>Number of Poles</b>               | 4                     |
| <b>Overall Length</b>                | 25.81 IN              |
| <b>Power Factor</b>                  | 84                    |
| <b>Product Family</b>                | Fire Pump Motor       |
| <b>Pulley End Bearing Type</b>       | Ball                  |
| <b>Pulley Face Code</b>              | Standard              |
| <b>Pulley Shaft Indicator</b>        | Standard              |
| <b>Rodent Screen</b>                 | None                  |
| <b>Service Factor</b>                | 1.15                  |
| <b>Shaft Diameter</b>                | 1.875 IN              |
| <b>Shaft Extension Location</b>      | Pulley End            |
| <b>Shaft Ground Indicator</b>        | No Shaft Grounding    |
| <b>Shaft Rotation</b>                | Reversible            |
| <b>Shaft Slinger Indicator</b>       | No Slinger            |
| <b>Speed</b>                         | 1770 rpm              |
| <b>Speed Code</b>                    | Single Speed          |
| <b>Starting Method</b>               | Wye Start - Delta Run |
| <b>Thermal Device - Bearing</b>      | None                  |
| <b>Thermal Device - Winding</b>      | None                  |
| <b>Vibration Sensor Indicator</b>    | No Vibration Sensor   |
| <b>Winding Thermal 1</b>             | None                  |
| <b>Winding Thermal 2</b>             | None                  |

**Nameplate**

**NP3454L**

|                  |              |                 |      |                  |            |
|------------------|--------------|-----------------|------|------------------|------------|
| <b>CAT.NO.</b>   | FPM2547TS-5  | <b>CUST P/N</b> |      | <b>I.P.</b>      | 23         |
| <b>SPEC.</b>     | 42F098X102H2 | <b>SER.NO.</b>  |      | <b>FRAME</b>     | 364TS      |
| <b>HZ</b>        | 60           | <b>HP</b>       | 60   | <b>RPM</b>       | 1770       |
| <b>VOLTS</b>     | 575          | <b>CODE</b>     | F    | <b>VOLTS</b>     |            |
| <b>AMPS</b>      | 57           | <b>DES</b>      | B    | <b>AMPS</b>      |            |
| <b>EFF</b>       | 93.6         | <b>SER.F.</b>   | 1.15 | <b>PF</b>        | 84         |
| <b>RATING</b>    | 40C AMB-CONT | <b>DE BRG</b>   | 6313 | <b>GREASE</b>    | POLYREX EM |
| <b>BLANK</b>     |              | <b>ODE BRG</b>  | 6311 | <b>MTR. WT.</b>  | 480        |
|                  |              | <b>CLASS</b>    | F    | <b>PH</b>        | 3          |
|                  |              | <b>ENCL</b>     | ODP  | <b>CC</b>        | 010A       |
| <b>HTR-VOLTS</b> |              | <b>HTR-AMPS</b> |      | <b>HTR-WATTS</b> |            |

## AC Induction Motor Performance Data

Record # 58310

Typical performance - not guaranteed values

| Winding: 42WGX102-R001 |              | Type: 4252M         |   | Enclosure: OPSB         |         |  |  |
|------------------------|--------------|---------------------|---|-------------------------|---------|--|--|
| <b>Nameplate Data</b>  |              |                     | <b>575 V, 60 Hz:<br/>Single Voltage Motor</b> |                         |         |  |  |
| Rated Output (HP)      | 60           | Full Load Torque    | 178 LB-FT                                     |                         |         |  |  |
| Volts                  | 575          | Start Configuration | direct on line                                |                         |         |  |  |
| Full Load Amps         | 57           | Breakdown Torque    | 488 LB-FT                                     |                         |         |  |  |
| R.P.M.                 | 1770         | Pull-up Torque      | 221 LB-FT                                     |                         |         |  |  |
| Hz                     | 60 Phase     | 3                   | Locked-rotor Torque                           | 297 LB-FT               |         |  |  |
| NEMA Design Code       | B            | KVA Code            | F   | Starting Current        | 323 A   |  |  |
| Service Factor (S.F.)  | 1.15         | No-load Current     | 21.1 A  |                         |         |  |  |
| NEMA Nom. Eff.         | 93.6         | Power Factor        | 84  | Line-line Res. @ 25°C   | 0.195 Ω |  |  |
| Rating - Duty          | 40C AMB-CONT |                     | Temp. Rise @ Rated Load                       | 53°C                    |         |  |  |
| S.F. Amps              |              |                     | Temp. Rise @ S.F. Load                        | 66°C                    |         |  |  |
|                        |              |                     | Locked-rotor Power Factor                     | 27.3                    |         |  |  |
|                        |              |                     | Rotor inertia                                 | 6.93 LB-FT <sup>2</sup> |         |  |  |

## Load Characteristics 575 V, 60 Hz, 60 HP

| % of Rated Load | 25   | 50   | 75   | 100  | 125  | 150  | S.F. |
|-----------------|------|------|------|------|------|------|------|
| Power Factor    | 50   | 71   | 80   | 84   | 85   | 84   | 85   |
| Efficiency      | 91.5 | 93.9 | 94   | 93.7 | 92.7 | 91.6 | 93.1 |
| Speed           | 1794 | 1787 | 1781 | 1772 | 1764 | 1753 | 1767 |
| Line amperes    | 24.9 | 33.4 | 44.7 | 57.3 | 71.1 | 87   | 65.6 |

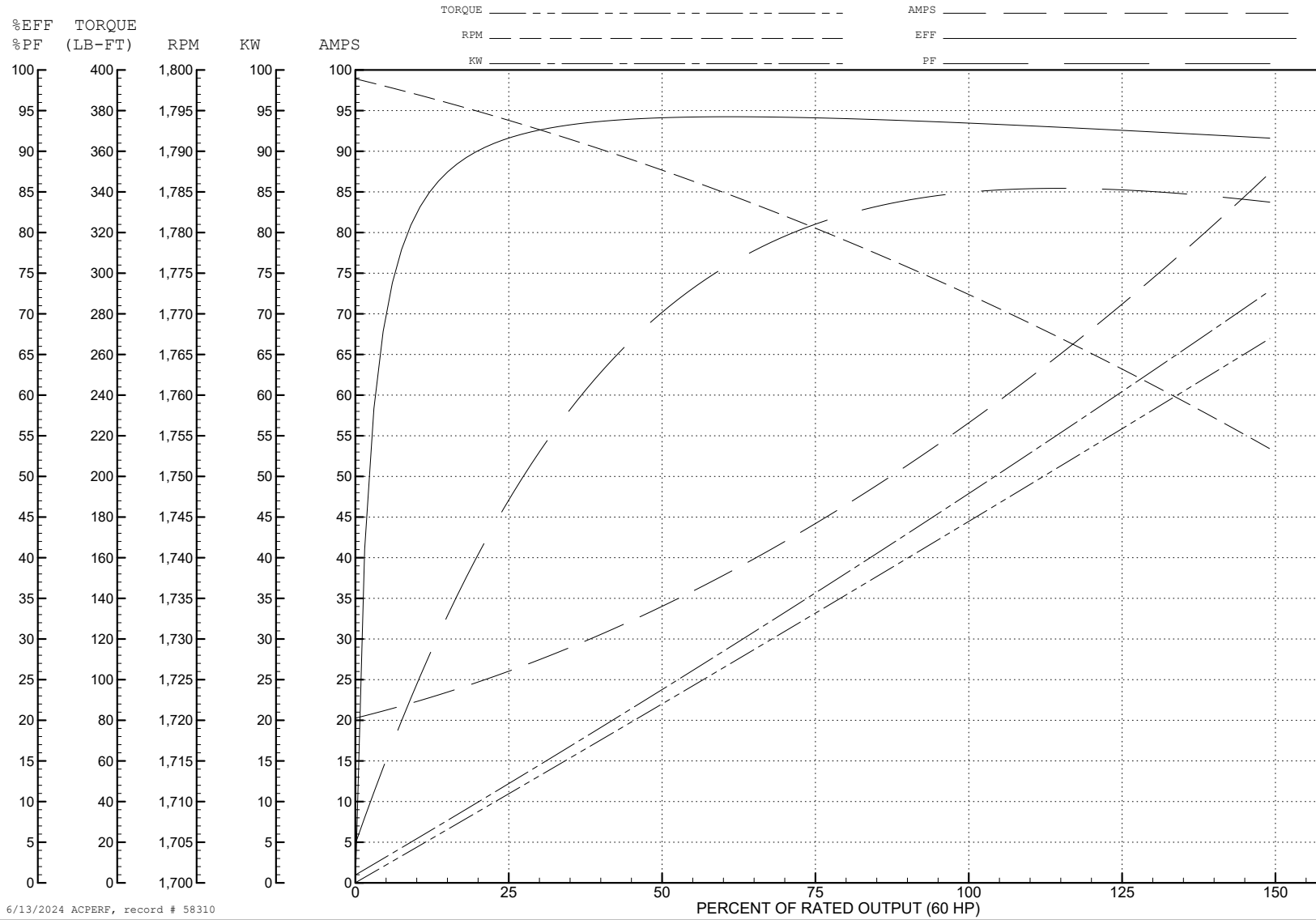
ABB Motors and Mechanical Inc.

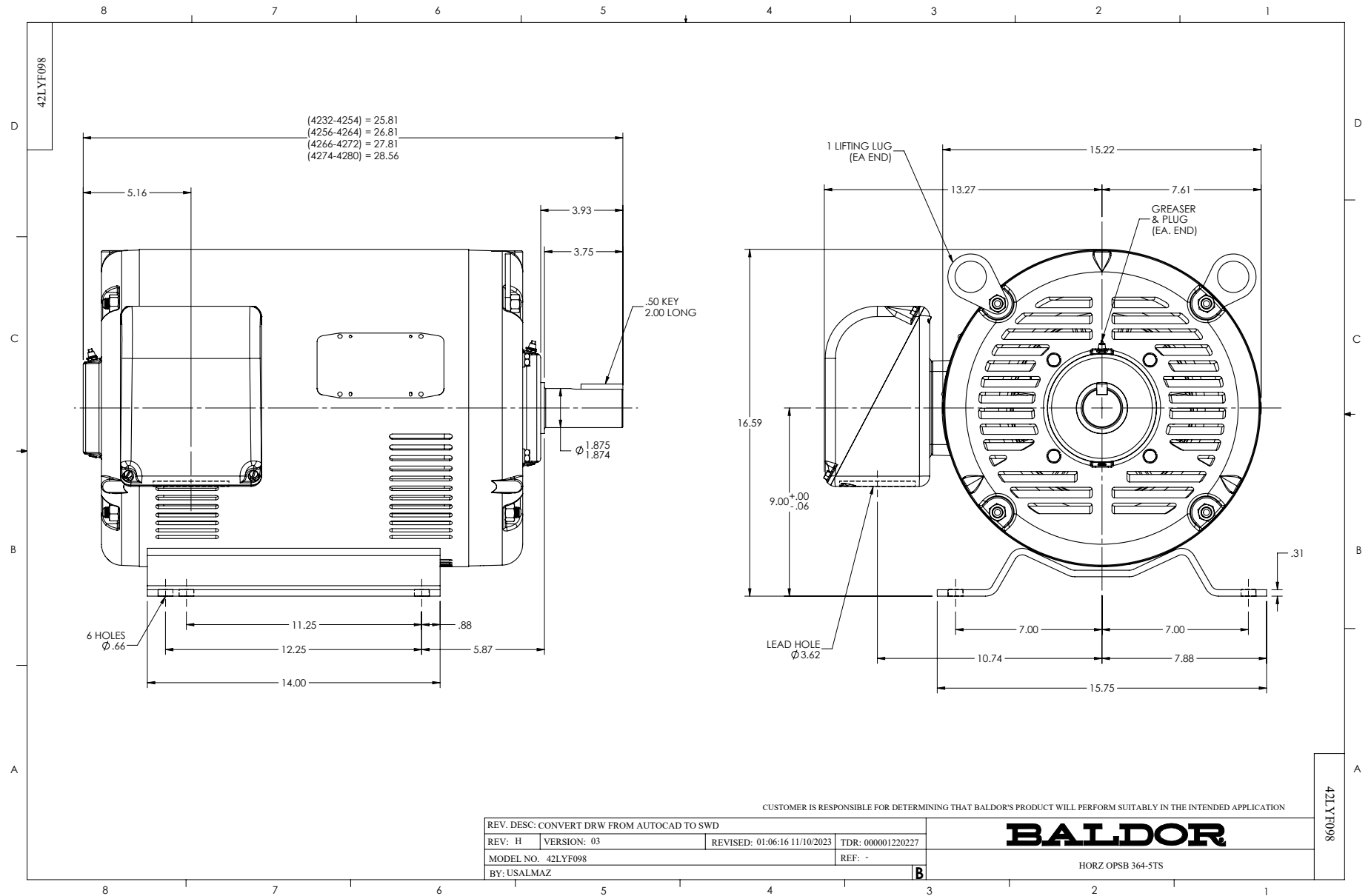
WINDING # 42WGX102

Typical performance - not guaranteed values.

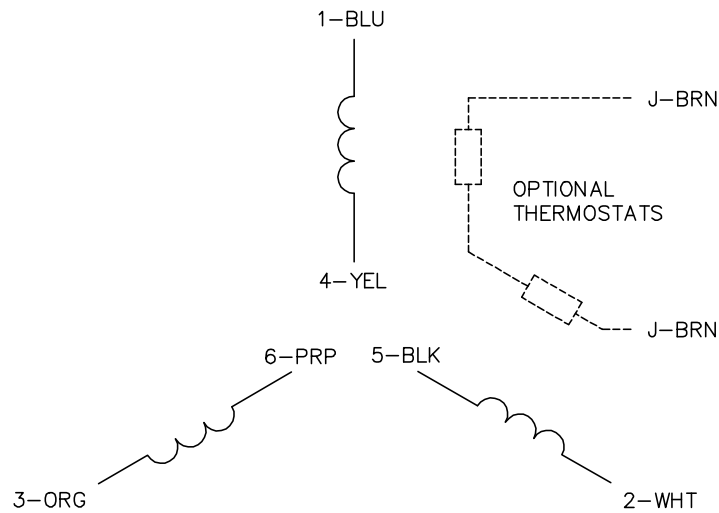
60 HP 3 PH 60 HZ 1770 RPM 575 V 4252M

TORQUES (LB-FT): PO=488 PU=221 LR=297 LRA=323

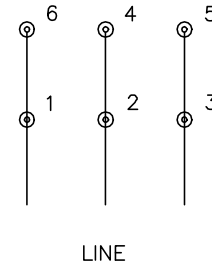




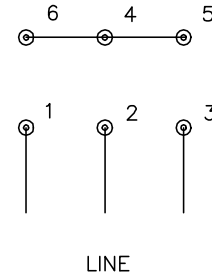
CD0382



RUN CONNECTION (1D)



START CONNECTION (1Y)



NOTES:

1. INTERCHANGE ANY TWO LINE LEADS TO REVERSE ROTATION.
2. OPTIONAL THERMOSTATS ARE PROVIDED WHEN SPECIFIED.
3. ACTUAL NUMBER OF INTERNAL PARALLEL CIRCUITS MAY BE A MULTIPLE OF THOSE SHOWN ABOVE.
4. LEAD COLORS ARE OPTIONAL. LEADS MUST ALWAYS BE NUMBERED AS SHOWN.
5. FOR ACROSS-THE-LINE STARTING, USE 'RUN' CONNECTION.

CD0382

|                                   |                              |                   |
|-----------------------------------|------------------------------|-------------------|
| REV. DESC: ADD CLASS CONN00000007 |                              |                   |
| REV. LTR: F                       | VERSION: 01                  | TDR: 000001099922 |
| FILE: \AAA\00005\243              | REVISED: 09:05:32 02/19/2019 | BY: ENBRIRO       |
| MTL: -                            | © □                          |                   |

**BALDOR - RELIANCE®**

3PH, SV, 6 LEADS, Y START/D RUN

SH 1 of 1