

**BALDOR® • RELIANCE™**

---

# Customer information packet

## FPM2546T-5

60HP, 3520RPM, 3PH, 60HZ, 326TS, 4062M, ODP, F1

## Specifications

Enclosure	ODP
Frame	326TS
Frame Material	Steel
Frequency	60.00 Hz
Motor Letter Type	Three Phase
Output @ Frequency	60.000 HP @ 60 HZ
Phase	3
Synchronous Speed @ Frequency	3600 RPM @ 60 HZ
Voltage @ Frequency	575.0 V @ 60 HZ
Agency Approvals	CSA EEV UL
Ambient Temperature	40 °C
Auxillary Box	No Auxillary Box
Auxillary Box Lead Termination	None
Base Indicator	Rigid
Bearing Grease Type	Polyrex EM (-20F +300F)
Blower	None
Current @ Voltage	54.000 A @ 575.0 V
Design Code	B
Drip Cover	No Drip Cover
Duty Rating	CONT
Efficiency @ 100% Load	93.0 %
Electrically Isolated Bearing	Not Electrically Isolated
Feedback Device	NO FEEDBACK
Front Face Code	Standard
Front Shaft Indicator	None
Heater Indicator	No Heater
High Voltage Full Load Amps	54.0 a
Insulation Class	F
Inverter Code	Not Inverter
KVA Code	G
Lifting Lugs	Standard Lifting Lugs

## Part detail

Revision	E
Type	AC
Mech. spec.	40H07
Base	
Status	PRD/A
Elec. spec.	40WGX358
Layout	40LYH007
Eff. date	07-24-2023
CD Diagram	CD0382
Poles	02
Leads	6#8
Proprietary	False
Created date	07-20-2016

<b>Locked Bearing Indicator</b>	No Locked Bearing
<b>Motor Lead Exit</b>	Ko Box
<b>Motor Lead Quantity/Wire Size</b>	6 @ 8 AWG
<b>Motor Lead Termination</b>	Flying Leads
<b>Motor Standards</b>	NEMA
<b>Motor Type</b>	4062M
<b>Mounting Arrangement</b>	F1
<b>Number of Poles</b>	2
<b>Overall Length</b>	25.69 IN
<b>Power Factor</b>	89
<b>Product Family</b>	Fire Pump Motor
<b>Pulley End Bearing Type</b>	Ball
<b>Pulley Face Code</b>	Standard
<b>Pulley Shaft Indicator</b>	Standard
<b>Rodent Screen</b>	None
<b>Service Factor</b>	1.15
<b>Shaft Diameter</b>	1.875 IN
<b>Shaft Extension Location</b>	Pulley End
<b>Shaft Ground Indicator</b>	No Shaft Grounding
<b>Shaft Rotation</b>	Reversible
<b>Shaft Slinger Indicator</b>	No Slinger
<b>Speed</b>	3520 rpm
<b>Speed Code</b>	Single Speed
<b>Starting Method</b>	Wye Start - Delta Run
<b>Thermal Device - Bearing</b>	None
<b>Thermal Device - Winding</b>	None
<b>Vibration Sensor Indicator</b>	No Vibration Sensor
<b>Winding Thermal 1</b>	None
<b>Winding Thermal 2</b>	None

**Nameplate**

**NP3454L**

<b>CAT.NO.</b>	FPM2546T-5	<b>CUST P/N</b>		<b>I.P.</b>	23
<b>SPEC.</b>	40H007X358H2	<b>SER.NO.</b>		<b>FRAME</b>	326TS
<b>HZ</b>	60	<b>HP</b>	60	<b>RPM</b>	3520
<b>VOLTS</b>	575	<b>CODE</b>	G	<b>VOLTS</b>	
<b>AMPS</b>	54	<b>DES</b>	B	<b>AMPS</b>	
<b>EFF</b>	93	<b>SER.F.</b>	1.15	<b>PF</b>	89
<b>RATING</b>	40C AMB-CONT	<b>DE BRG</b>	6312	<b>GREASE</b>	POLYREX EM
<b>BLANK</b>		<b>ODE BRG</b>	6309	<b>MTR. WT.</b>	449
		<b>CLASS</b>	F	<b>PH</b>	3
		<b>ENCL</b>	ODP	<b>CC</b>	010A
<b>HTR-VOLTS</b>		<b>HTR-AMPS</b>		<b>HTR-WATTS</b>	

**AC Induction Motor Performance Data**

Record # 58309

Typical performance - not guaranteed values

<b>Winding: 40WGX358-R001</b>		<b>Type: 4062M</b>		<b>Enclosure: OPSB</b>	
<b>Nameplate Data</b>			<b>575 V, 60 Hz: Single Voltage Motor</b>		
<b>Rated Output (HP)</b>	60	<b>Full Load Torque</b>	89.6 LB-FT		
<b>Volts</b>	575	<b>Start Configuration</b>	direct on line		
<b>Full Load Amps</b>	54	<b>Breakdown Torque</b>	202 LB-FT		
<b>R.P.M.</b>	3520	<b>Pull-up Torque</b>	113 LB-FT		
<b>Hz</b>	60	<b>Phase</b>	3	<b>Locked-rotor Torque</b>	147 LB-FT
<b>NEMA Design Code</b>	B	<b>KVA Code</b>	G	<b>Starting Current</b>	338 A
<b>Service Factor (S.F.)</b>	1.15	<b>No-load Current</b>	13.1 A		
<b>NEMA Nom. Eff.</b>	93	<b>Power Factor</b>	89	<b>Line-line Res. @ 25°C</b>	0.178 Ω
<b>Rating - Duty</b>	40C AMB-CONT		<b>Temp. Rise @ Rated Load</b>	47°C	
<b>S.F. Amps</b>			<b>Temp. Rise @ S.F. Load</b>	59°C	
			<b>Locked-rotor Power Factor</b>	21.9	
			<b>Rotor inertia</b>	2.66 LB-FT <sup>2</sup>	

**Load Characteristics 575 V, 60 Hz, 60 HP**

<b>% of Rated Load</b>	<b>25</b>	<b>50</b>	<b>75</b>	<b>100</b>	<b>125</b>	<b>150</b>	<b>S.F.</b>
<b>Power Factor</b>	67	84	88	90	90	89	90
<b>Efficiency</b>	92.2	94	94	93.1	92.3	90.4	92.6
<b>Speed</b>	3582	3565	3545	3523	3500	3471	3509
<b>Line amperes</b>	18.7	28.6	40.5	53.9	68	83.3	62.4

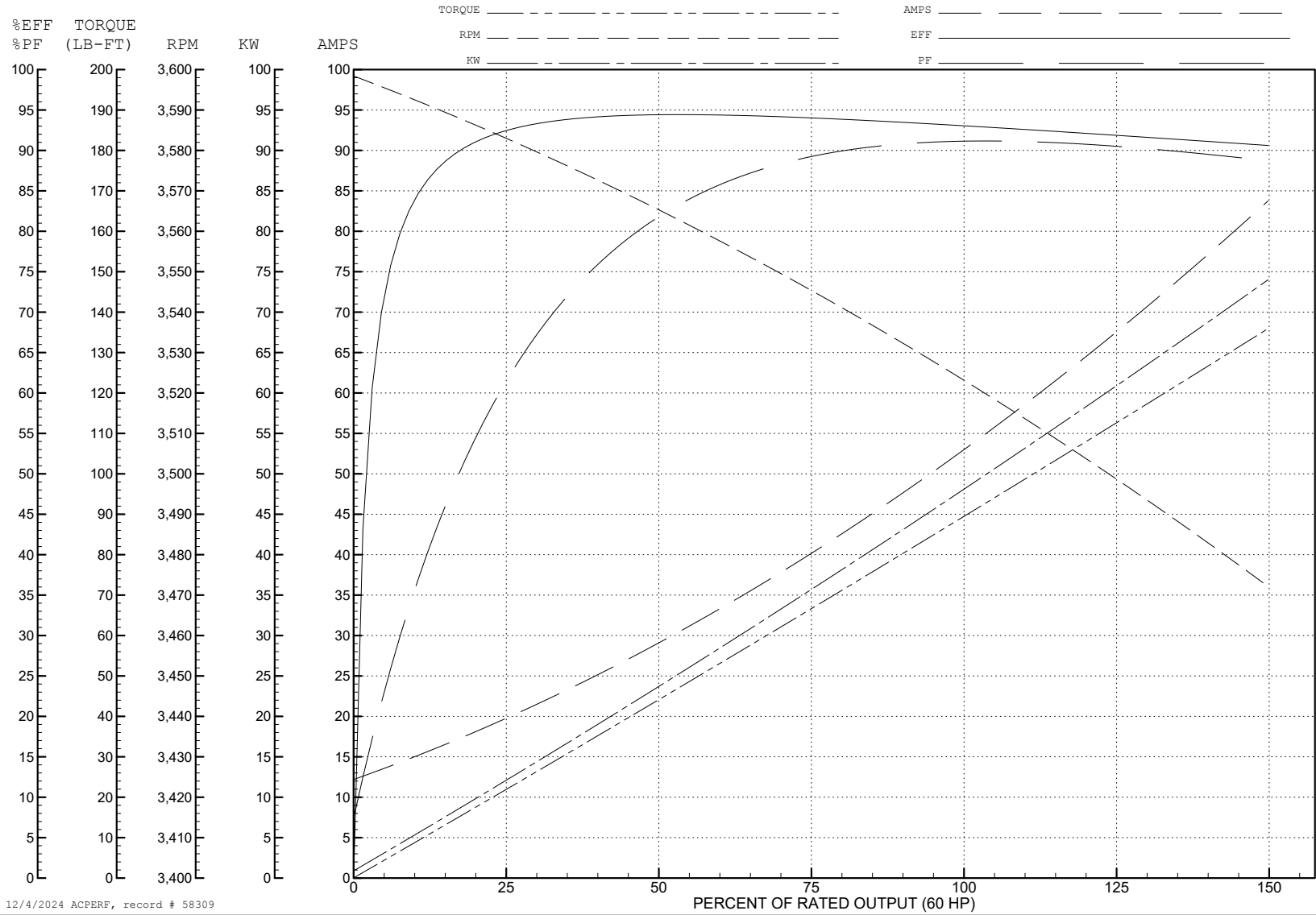
ABB Motors and Mechanical Inc.

WINDING # 40WGX358

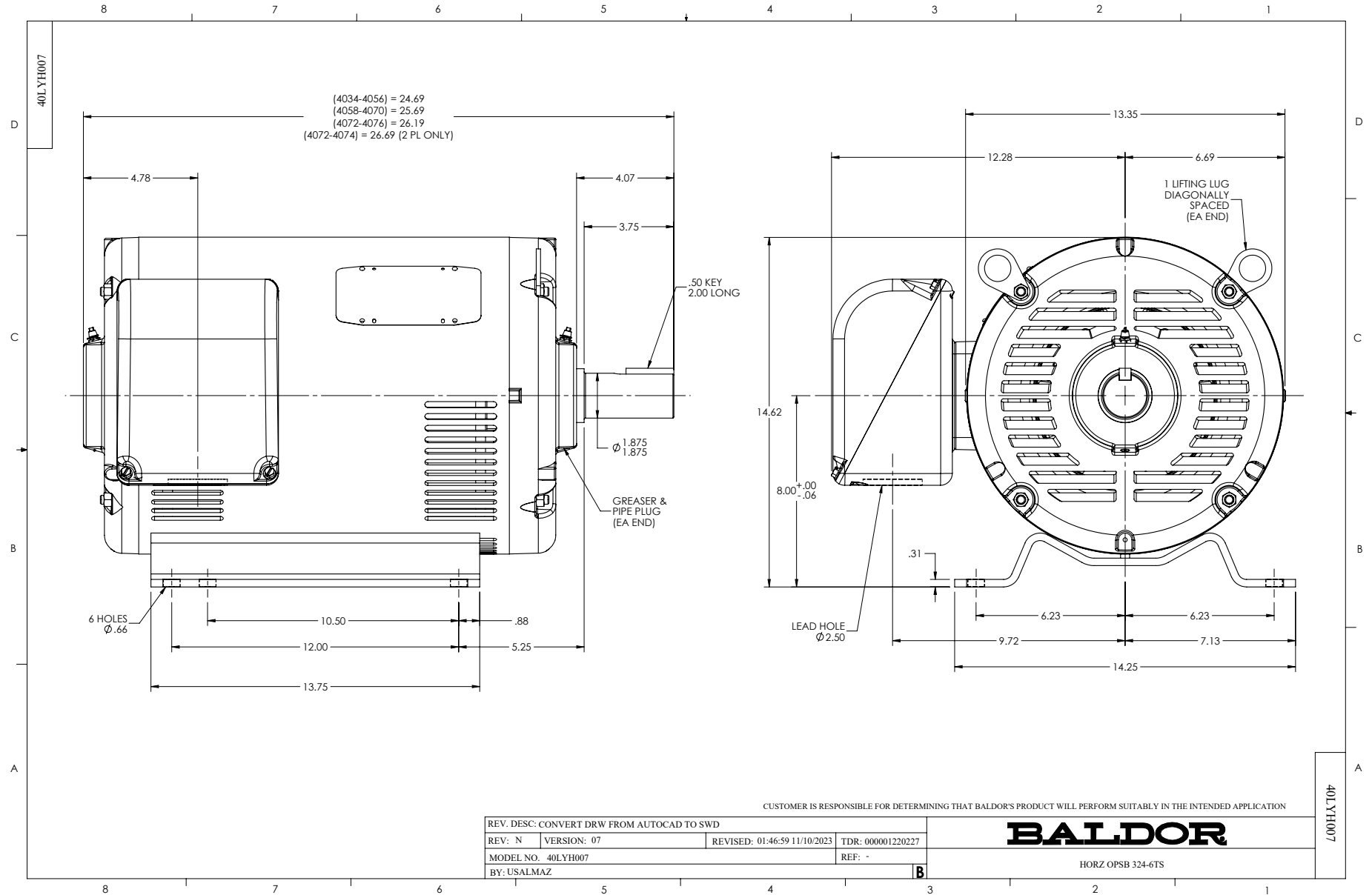
60 HP 3 PH 60 HZ 3520 RPM 575 V 4062M

Typical performance - not guaranteed values.

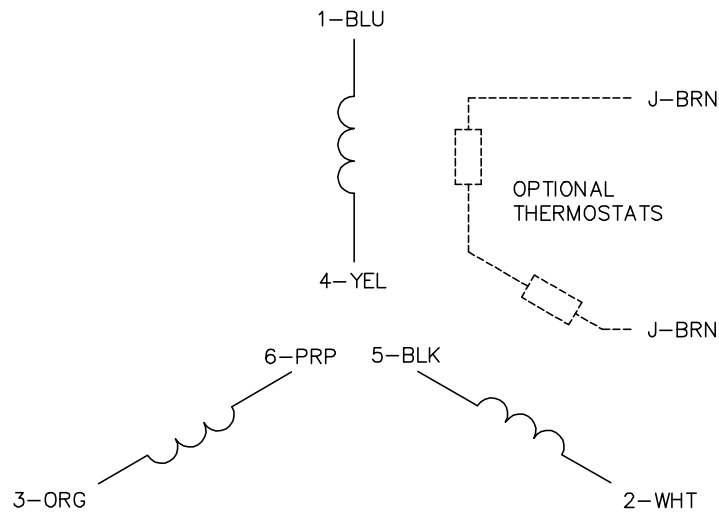
TORQUES (LB-FT): PO=202 PU=113 LR=147 LRA=338



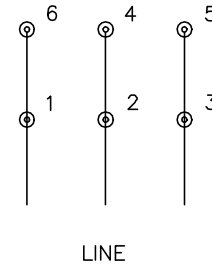
12/4/2024 ACPERF, record # 58309



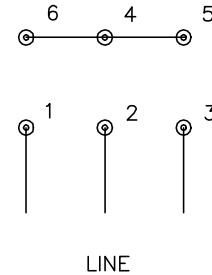
CD0382



RUN CONNECTION (1D)



START CONNECTION (1Y)



NOTES:

1. INTERCHANGE ANY TWO LINE LEADS TO REVERSE ROTATION.
2. OPTIONAL THERMOSTATS ARE PROVIDED WHEN SPECIFIED.
3. ACTUAL NUMBER OF INTERNAL PARALLEL CIRCUITS MAY BE A MULTIPLE OF THOSE SHOWN ABOVE.
4. LEAD COLORS ARE OPTIONAL. LEADS MUST ALWAYS BE NUMBERED AS SHOWN.
5. FOR ACROSS-THE-LINE STARTING, USE 'RUN' CONNECTION.

CD0382

REV. DESC: ADD CLASS CONN00000007		
REV. LTR: F	VERSION: 01	TDR: 000001099922
FILE: \AAA\00005\243	REVISED: 09:05:32 02/19/2019	BY: ENBRIRO
MTL: -	© □	

**BALDOR - RELIANCE®**

3PH, SV, 6 LEADS, Y START/D RUN

SH 1 of 1