

ABB BALDOR RELIANCE III



Customer information packet FPM2539TS

40//30HP, 1770//1470RPM, 3PH, 60//50HZ, 324T

Specifications

Enclosure	ODP
Frame	324TS
Frame Material	Steel
Frequency	50.00 Hz 60.00 Hz
Motor Letter Type	Three Phase
Output @ Frequency	30.000 HP @ 50 HZ 40.000 HP @ 60 HZ
Phase	3
Synchronous Speed @ Frequency	1500 RPM @ 50 HZ
Voltage @ Frequency	230.0 V @ 60 HZ 190.0 V @ 50 HZ 460.0 V @ 60 HZ 380.0 V @ 50 HZ
Agency Approvals	CSA EEV UL
Ambient Temperature	40 °C
Auxiliary Box	NO AUXILLARY BOX
Auxiliary Box Lead Termination	None
Base Indicator	Rigid
Bearing Grease Type	Polyrex EM (-20F +300F)
Blower	None
Current @ Voltage	98.000 A @ 230.0 V 90.000 A @ 190.0 V 49.000 A @ 460.0 V 45.000 A @ 380.0 V 104.000 A @ 208.0 V
Design Code	B
Drip Cover	No Drip Cover
Duty Rating	CONT
Efficiency @ 100% Load	93.0 %
Electrically Isolated Bearing	Not Electrically Isolated

Part Detail

Revision	G
Type	AC
Mech. spec.	40H07
Base	
Status	PRD/A
Elec. spec.	40WGW486
Layout	40LYH007
Eff. date	07-24-2023
CD Diagram	CD0104
Poles	04
Leads	12#10
Proprietary	False
Created date	09-17-2015

Feedback Device	NO FEEDBACK
Front Face Code	Standard
Front Shaft Indicator	None
Heater Indicator	No Heater
High Voltage Full Load Amps	45.0 a
Insulation Class	F
Inverter Code	Not Inverter
KVA Code	G
Lifting Lugs	Standard Lifting Lugs
Locked Bearing Indicator	No Locked Bearing
Motor Lead Exit	Ko Box
Motor Lead Quantity/Wire Size	12 @ 10 AWG
Motor Lead Termination	Flying Leads
Motor Standards	NEMA
Motor Type	4052M
Mounting Arrangement	F1
Number of Poles	4
Overall Length	24.69 IN
Power Factor	83
Product Family	Fire Pump Motor
Pulley End Bearing Type	Ball
Pulley Face Code	Standard
Pulley Shaft Indicator	Standard
Rodent Screen	None
Service Factor	1.15
Shaft Diameter	1.875 IN
Shaft Extension Location	Pulley End
Shaft Ground Indicator	No Shaft Grounding
Shaft Rotation	Reversible
Shaft Slinger Indicator	No Slinger
Speed	1470 rpm 1770 rpm
Speed Code	Single Speed
Starting Method	Wye Start - Delta Run

Thermal Device - Bearing	None
Thermal Device - Winding	None
Vibration Sensor Indicator	No Vibration Sensor
Winding Thermal 1	None
Winding Thermal 2	None

Nameplate

NP3454L

CAT.NO.	FPM2539TS	CUST P/N		I.P.	23
SPEC.	40H007W486H2	SER.NO.		FRAME	324TS
HZ	60	HP	40	RPM	1770
				HZ	50
				HP	30
				RPM	1470
VOLTS	230/460	CODE	G	VOLTS	190/380
				CODE	G
AMPS	98/49	DES	B	AMPS	90/45
				DES	B
EFF	93	SER.F.	1.15	PF	83
				EFF	92.4
				SER.F.	1.15
				PF	82
RATING	40C AMB-CONT	DE BRG	6312	GREASE	POLYREX EM
BLANK		ODE BRG	6309	MTR. WT.	400
		CLASS	F	PH	3
		ENCL	ODP	CC	010A
HTR-VOLTS		HTR-AMPS		HTR-WATTS	

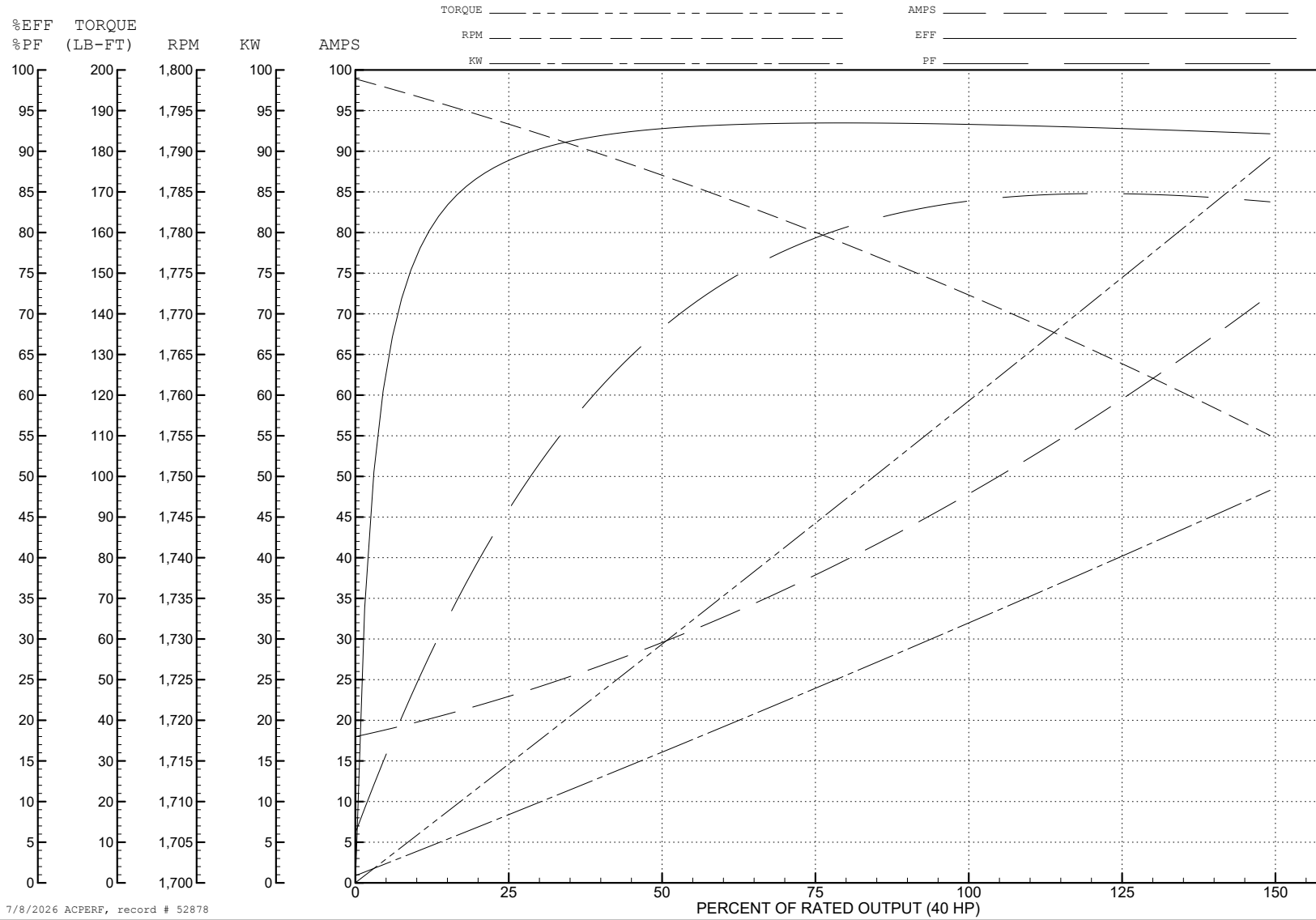
ABB Motors and Mechanical Inc.

WINDING # 40WGW486

Typical performance - not guaranteed values.

40 HP 3 PH 60 HZ 1772 RPM 460 V 4052M

TORQUES (LB-FT): PO=324 PU=158 LR=196 LRA=286



7/8/2026 ACPERF, record # 52878

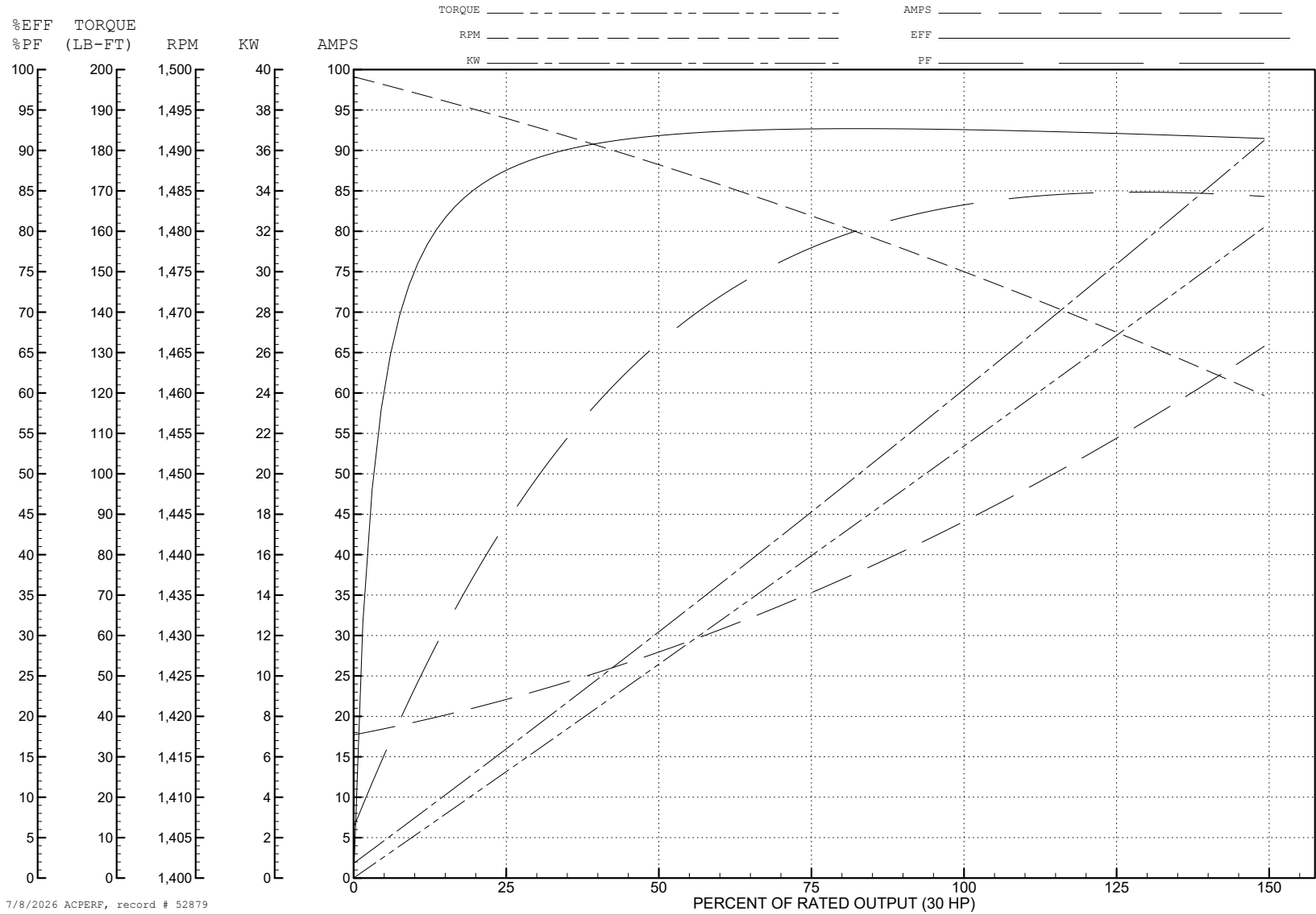
ABB Motors and Mechanical Inc.

WINDING # 40WG486

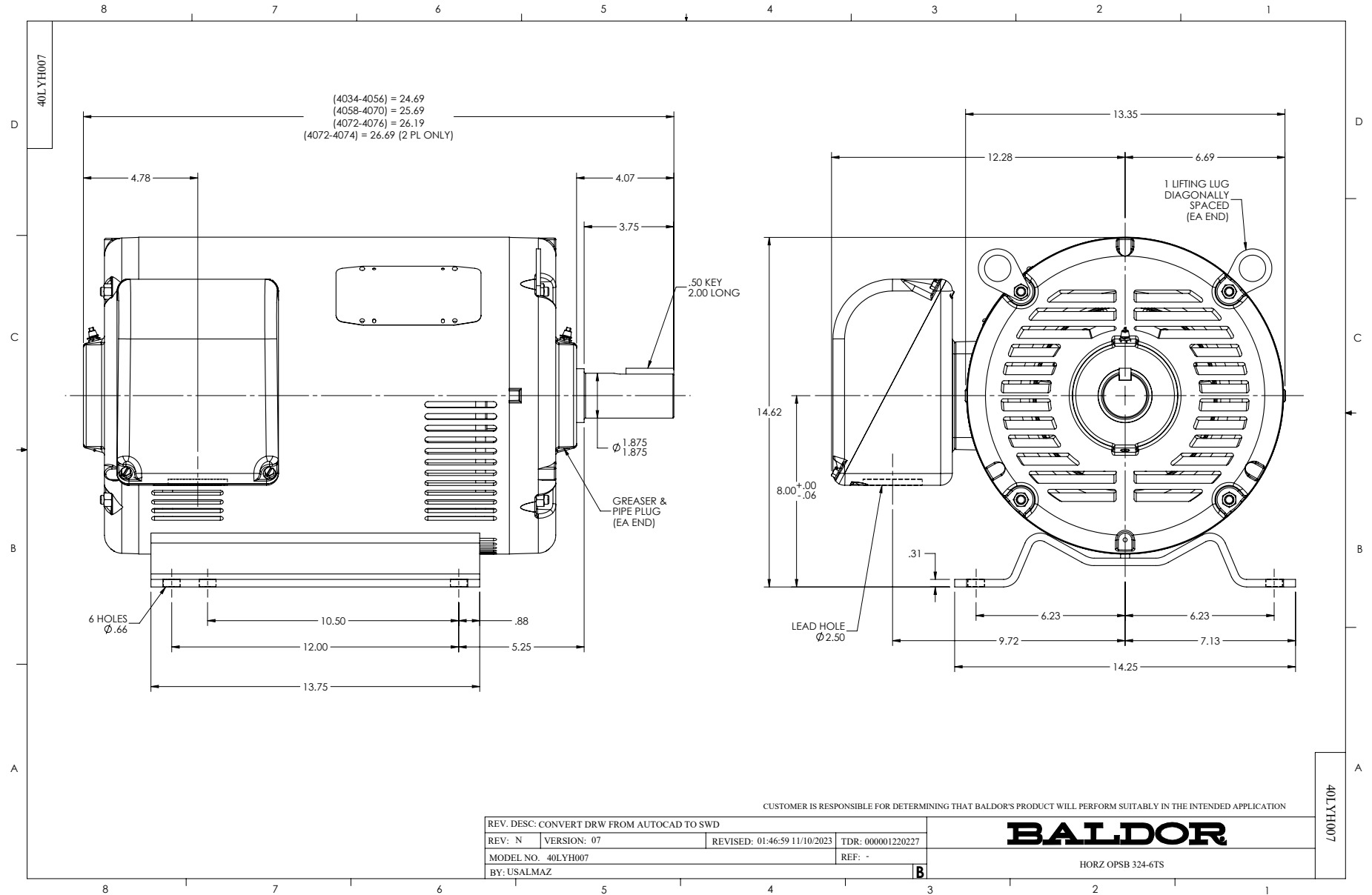
Typical performance - not guaranteed values.

30 HP 3 PH 50 HZ 1475 RPM 380 V 4052M

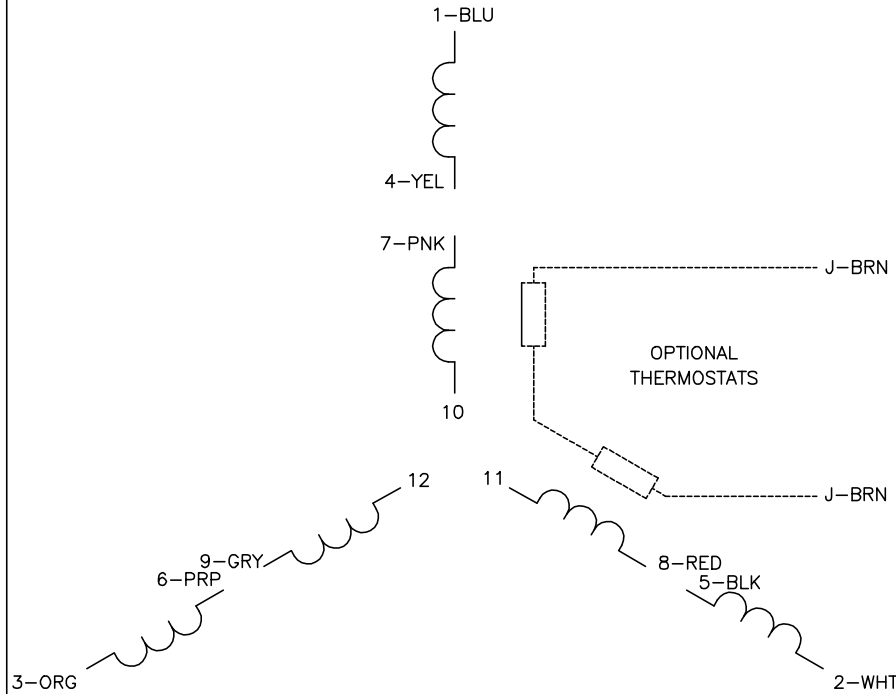
TORQUES (LB-FT): PO=314 PU=162 LR=201 LRA=272



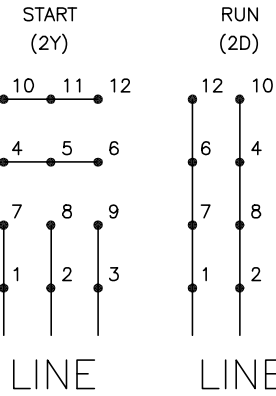
7/8/2026 ACPERF, record # 52879



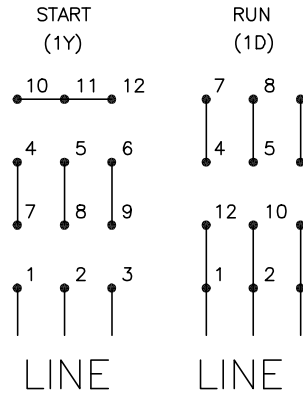
CD0104



LOW VOLTAGE



HIGH VOLTAGE



NOTES:

1. INTERCHANGE ANY TWO LINE LEADS TO REVERSE ROTATION.
2. OPTIONAL THERMOSTATS ARE PROVIDED WHEN SPECIFIED.
3. ACTUAL NUMBER OF INTERNAL PARALLEL CIRCUITS MAY BE A MULTIPLE OF THOSE SHOWN ABOVE.
4. LEAD COLORS ARE OPTIONAL. LEADS MUST ALWAYS BE NUMBERED AS SHOWN.

CD0104

REV. DESC: ADD CLASS CONN00000007		
REV. LTR: D	VERSION: 01	TDR: 000001099922
FILE: \AAA\00008\377	REVISED: 09:02:55 02/19/2019	BY: ENBRIRO
MTL: -	© □	

BALDOR - RELIANCE®

3PH, DV, 12 LEADS, Y START/D RUN

SH 1 of 1