

ABB BALDOR RELIANCE III

Customer information packet

FPM2534T

30//25HP, 3510//2910RPM, 3PH, 60//50HZ, 284T

Class -

Division - Not Applicable

Specifications

Enclosure	ODP
Frame	284TS
Frame Material	Steel
Frequency	50.00 Hz 60.00 Hz
Haz Area Division	Not Applicable
Motor Letter Type	Three Phase
Output @ Frequency	25.000 HP @ 50 HZ 30.000 HP @ 60 HZ
Phase	3
Synchronous Speed @ Frequency	3000 RPM @ 50 HZ
Voltage @ Frequency	460.0 V @ 60 HZ 380.0 V @ 50 HZ 230.0 V @ 60 HZ 190.0 V @ 50 HZ
Agency Approvals	CSA EEV UL
Ambient Temperature	40 °C
Auxiliary Box	NO AUXILLARY BOX
Auxiliary Box Lead Termination	None
Base Indicator	Rigid
Bearing Grease Type	Polyrex EM (-20F +300F)
Blower	None
Current @ Voltage	70.000 A @ 230.0 V 70.000 A @ 190.0 V 35.000 A @ 460.0 V 35.000 A @ 380.0 V
Design Code	B
Drip Cover	No Drip Cover
Duty Rating	CONT
Efficiency @ 100% Load	91.0 %
Electrically Isolated Bearing	Not Electrically Isolated

Part Detail

Revision	R
Type	AC
Mech. spec.	39R082
Base	
Status	PRD/A
Elec. spec.	39WGX216
Layout	39LYR082
Eff. date	11-14-2023
CD Diagram	CD0104
Poles	02
Leads	12#12
Proprietary	False
Created date	09-17-2015

Feedback Device	NO FEEDBACK
Front Face Code	Standard
Front Shaft Indicator	None
Heater Indicator	No Heater
High Voltage Full Load Amps	35.0 a
Insulation Class	F
Inverter Code	Not Inverter
KVA Code	G
Lifting Lugs	Standard Lifting Lugs
Locked Bearing Indicator	No Locked Bearing
Motor Lead Exit	Ko Box
Motor Lead Quantity/Wire Size	12 @ 12 AWG
Motor Lead Termination	Flying Leads
Motor Standards	NEMA
Motor Type	3936M
Mounting Arrangement	F1
Number of Poles	2
Overall Length	22.06 IN
Power Factor	89
Product Family	Fire Pump Motor
Pulley End Bearing Type	Ball
Pulley Face Code	Standard
Pulley Shaft Indicator	Standard
Rodent Screen	None
Service Factor	1.15
Shaft Diameter	1.625 IN
Shaft Extension Location	Pulley End
Shaft Ground Indicator	No Shaft Grounding
Shaft Rotation	Reversible
Shaft Slinger Indicator	No Slinger
Speed	2910 rpm 3510 rpm
Speed Code	Single Speed
Starting Method	Wye Start - Delta Run

Thermal Device - Bearing	None
Thermal Device - Winding	None
Vibration Sensor Indicator	No Vibration Sensor
Winding Thermal 1	None
Winding Thermal 2	None

Nameplate

NP3454L

CAT.NO.	FPM2534T	CUST P/N		I.P.	23
SPEC.	39R082X216H2	SER.NO.		FRAME	284TS
HZ	60	HP	30	RPM	3510
				HZ	50
				HP	25
				RPM	2910
VOLTS	230/460	CODE	G	VOLTS	190/380
				CODE	F
AMPS	70/35	DES	B	AMPS	70/35
				DES	B
EFF	91	SER.F.	1.15	PF	89
				EFF	90.2
				SER.F.	1.15
				PF	89
RATING	40C AMB-CONT	DE BRG	6311	GREASE	POLYREX EM
BLANK		ODE BRG	6208	MTR. WT.	226
		CLASS	F	PH	3
		ENCL	ODP	CC	010A
HTR-VOLTS		HTR-AMPS		HTR-WATTS	

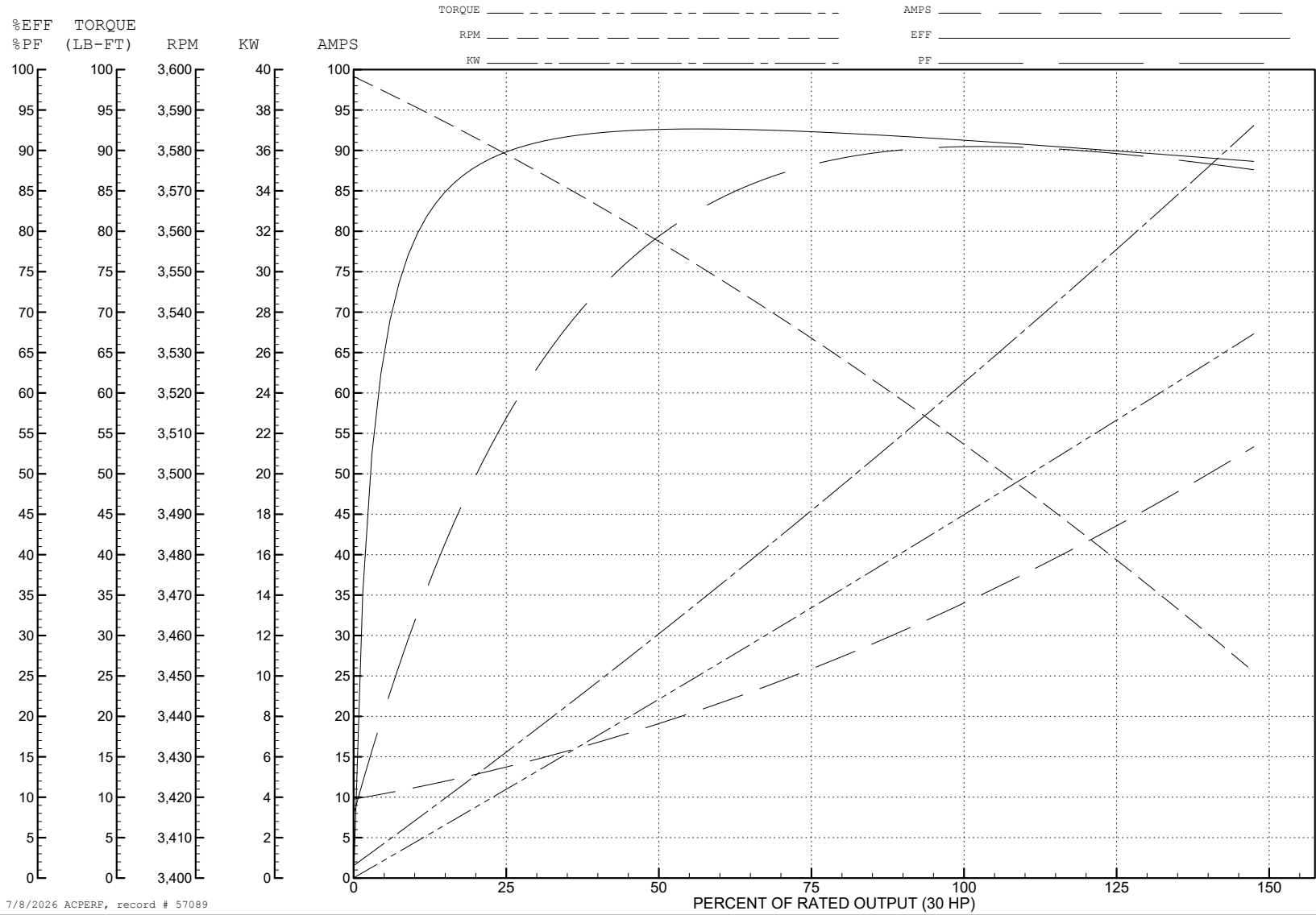
ABB Motors and Mechanical Inc.

WINDING # 39WGX216

30 HP 3 PH 60 HZ 3508 RPM 460 V 3936M

Typical performance - not guaranteed values.

TORQUES (LB-FT): PO=156 PU=47.6 LR=67.2 LRA=214



7/8/2026 ACPERF, record # 57089

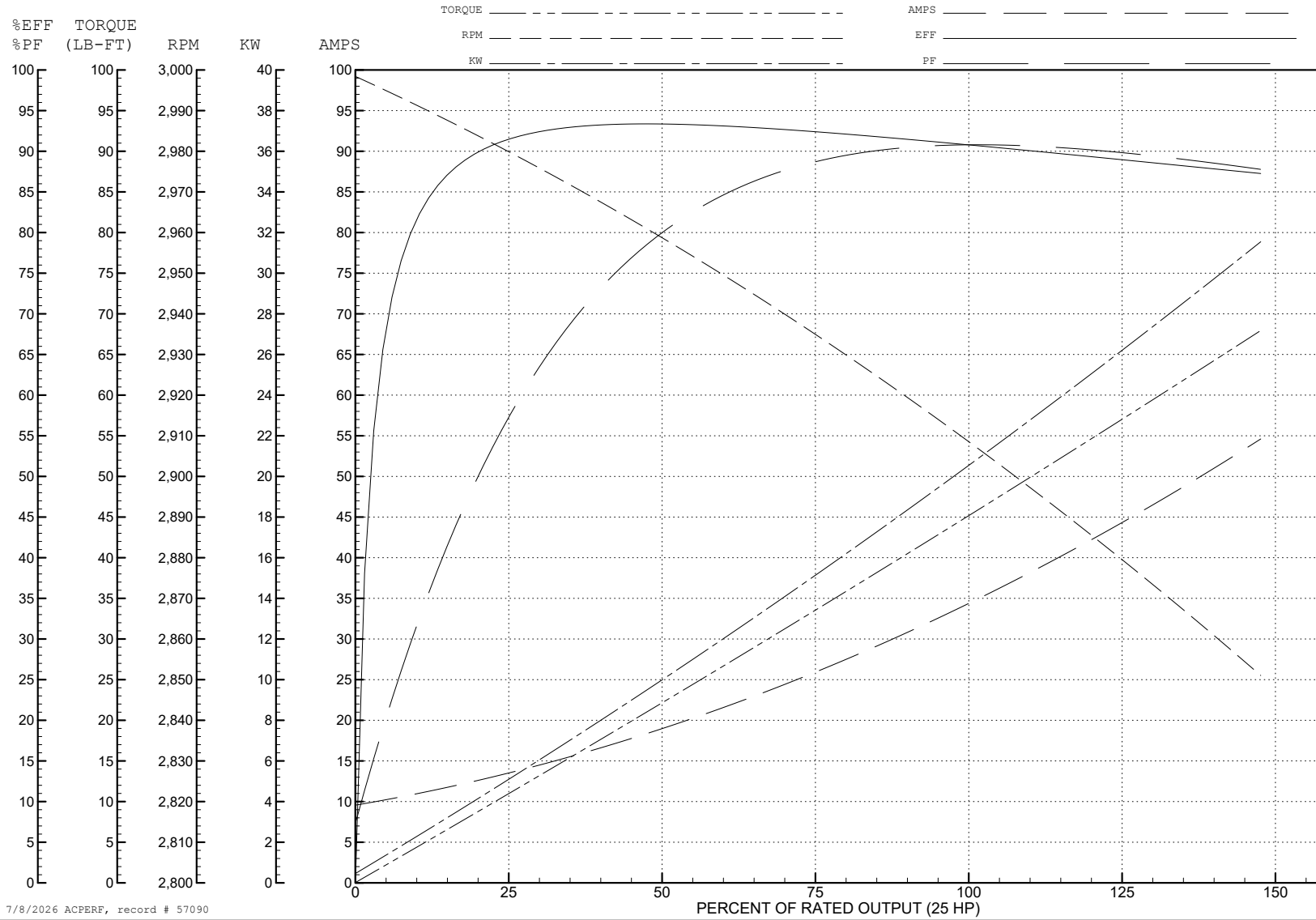
ABB Motors and Mechanical Inc.

WINDING # 39WGX216

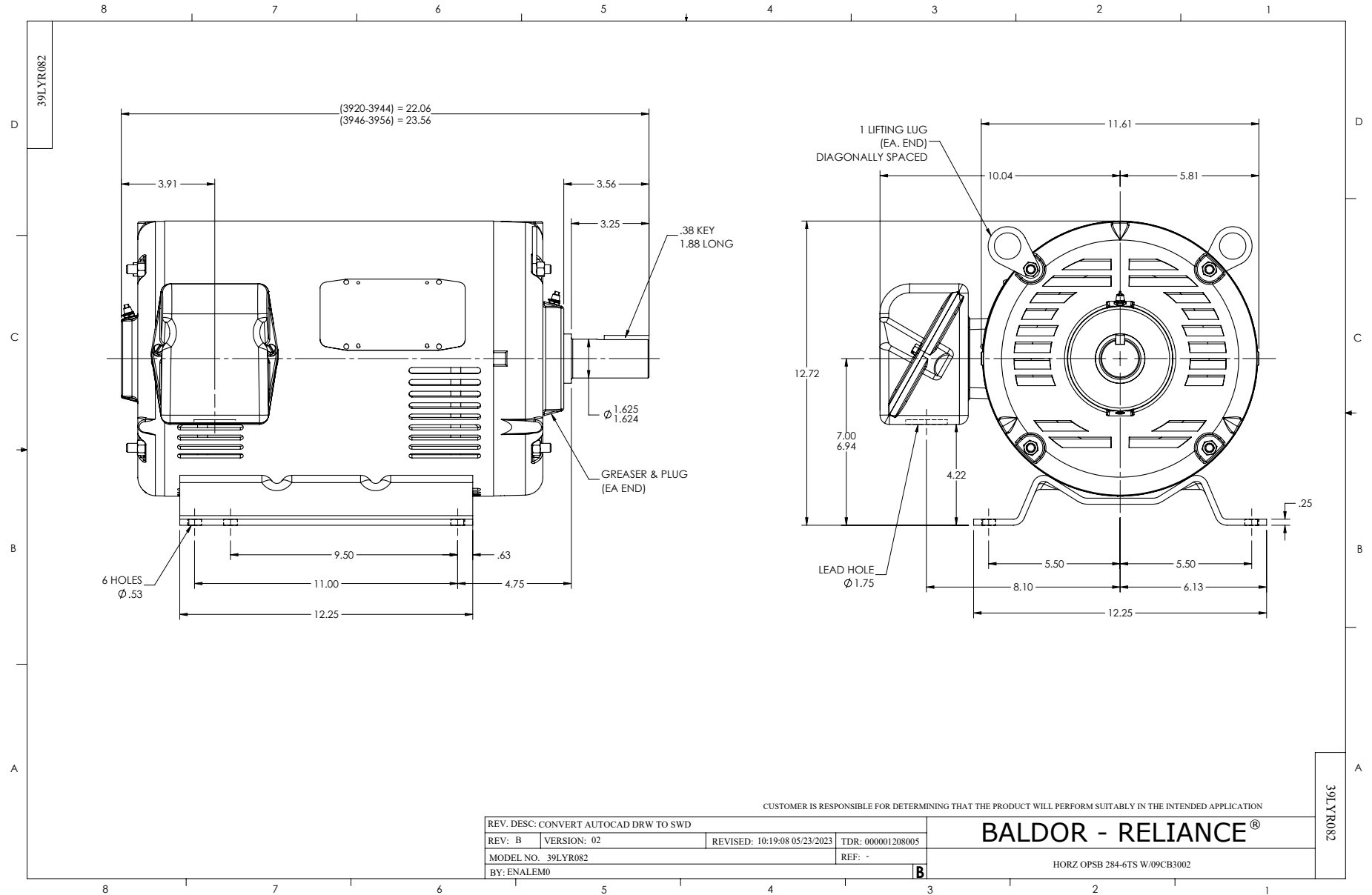
Typical performance - not guaranteed values.

25 HP 3 PH 50 HZ 2909 RPM 380 V 3936M

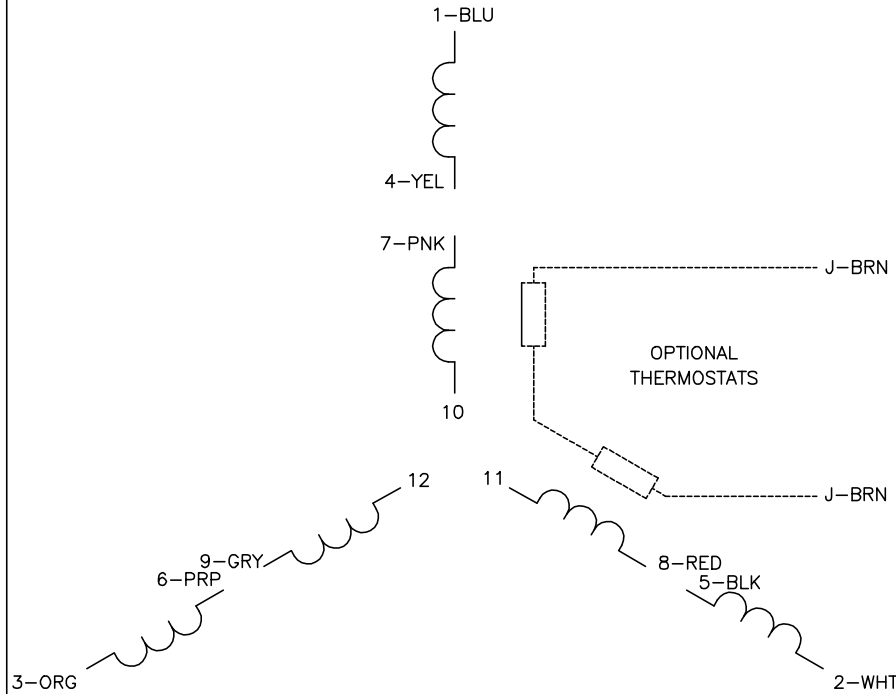
TORQUES (LB-FT): PO=149 PU=50.3 LR=71 LRA=208



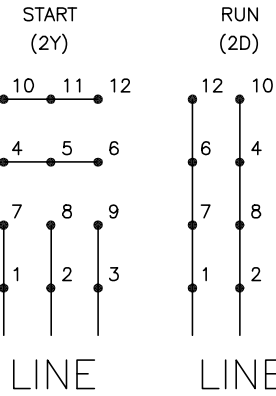
7/8/2026 ACPERF, record # 57090



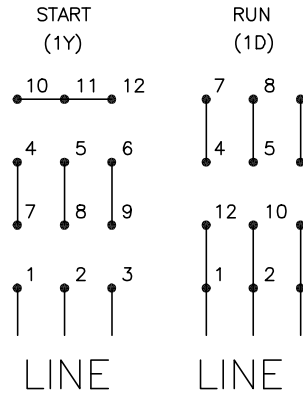
CD0104



LOW VOLTAGE



HIGH VOLTAGE



NOTES:

1. INTERCHANGE ANY TWO LINE LEADS TO REVERSE ROTATION.
2. OPTIONAL THERMOSTATS ARE PROVIDED WHEN SPECIFIED.
3. ACTUAL NUMBER OF INTERNAL PARALLEL CIRCUITS MAY BE A MULTIPLE OF THOSE SHOWN ABOVE.
4. LEAD COLORS ARE OPTIONAL. LEADS MUST ALWAYS BE NUMBERED AS SHOWN.

CD0104

REV. DESC: ADD CLASS CONN00000007		
REV. LTR: D	VERSION: 01	TDR: 000001099922
FILE: \AAA\00008\377	REVISED: 09:02:55 02/19/2019	BY: ENBRIRO
MTL: -	© □	

BALDOR - RELIANCE®

3PH, DV, 12 LEADS, Y START/D RUN

SH 1 of 1