



---

# Customer information packet

## FPM2534T-5

30HP, 3505RPM, 3PH, 60HZ, 284TS, 3936M, ODP, F1

Class - None

Division - Not Applicable

## Specifications

Enclosure	ODP
Frame	284TS
Frame Material	Steel
Frequency	60.00 Hz
Haz Area Class and Group	None
Haz Area Division	Not Applicable
Motor Letter Type	Three Phase
Output @ Frequency	30.000 HP @ 60 HZ
Phase	3
Synchronous Speed @ Frequency	3600 RPM @ 60 HZ
Voltage @ Frequency	575.0 V @ 60 HZ
Agency Approvals	UL CSA EEV
Ambient Temperature	40 °C
Auxillary Box	No Auxillary Box
Auxillary Box Lead Termination	None
Base Indicator	Rigid
Bearing Grease Type	Polyrex EM (-20F +300F)
Blower	None
Current @ Voltage	28.000 A @ 575.0 V
Design Code	B
Drip Cover	No Drip Cover
Duty Rating	CONT
Efficiency @ 100% Load	91.0 %
Electrically Isolated Bearing	Not Electrically Isolated
Feedback Device	NO FEEDBACK
Front Face Code	Standard
Front Shaft Indicator	None
Heater Indicator	No Heater
High Voltage Full Load Amps	28.0 a
Insulation Class	F
Inverter Code	Not Inverter

## Part detail

Revision	L
Type	AC
Mech. spec.	39R082
Base	
Status	PRD/A
Elec. spec.	39WGX990
Layout	39LYR082
Eff. date	11-14-2023
CD Diagram	CD0382
Poles	02
Leads	6#12
Proprietary	False
Created date	07-20-2016

<b>KVA Code</b>	G
<b>Lifting Lugs</b>	Standard Lifting Lugs
<b>Locked Bearing Indicator</b>	No Locked Bearing
<b>Motor Lead Exit</b>	Ko Box
<b>Motor Lead Quantity/Wire Size</b>	6 @ 12 AWG
<b>Motor Lead Termination</b>	Flying Leads
<b>Motor Standards</b>	NEMA
<b>Motor Type</b>	3936M
<b>Mounting Arrangement</b>	F1
<b>Number of Poles</b>	2
<b>Overall Length</b>	22.06 IN
<b>Power Factor</b>	89
<b>Product Family</b>	Fire Pump Motor
<b>Pulley End Bearing Type</b>	Ball
<b>Pulley Face Code</b>	Standard
<b>Pulley Shaft Indicator</b>	Standard
<b>Rodent Screen</b>	None
<b>Service Factor</b>	1.15
<b>Shaft Diameter</b>	1.625 IN
<b>Shaft Extension Location</b>	Pulley End
<b>Shaft Ground Indicator</b>	No Shaft Grounding
<b>Shaft Rotation</b>	Reversible
<b>Shaft Slinger Indicator</b>	No Slinger
<b>Speed</b>	3505 rpm
<b>Speed Code</b>	Single Speed
<b>Starting Method</b>	Wye Start - Delta Run
<b>Thermal Device - Bearing</b>	None
<b>Thermal Device - Winding</b>	None
<b>Vibration Sensor Indicator</b>	No Vibration Sensor
<b>Winding Thermal 1</b>	None
<b>Winding Thermal 2</b>	None

**Nameplate**

**NP3454L**

<b>CAT.NO.</b>	FPM2534T-5	<b>CUST P/N</b>		<b>I.P.</b>	23
<b>SPEC.</b>	39R082X990H2	<b>SER.NO.</b>		<b>FRAME</b>	284TS
<b>HZ</b>	60	<b>HP</b>	30	<b>RPM</b>	3505
<b>VOLTS</b>	575	<b>CODE</b>	G	<b>VOLTS</b>	
<b>AMPS</b>	28	<b>DES</b>	B	<b>AMPS</b>	
<b>EFF</b>	91	<b>SER.F.</b>	1.15	<b>PF</b>	89
<b>RATING</b>	40C AMB-CONT	<b>DE BRG</b>	6311	<b>GREASE</b>	POLYREX EM
<b>BLANK</b>		<b>ODE BRG</b>	6208	<b>MTR. WT.</b>	240
		<b>CLASS</b>	F	<b>PH</b>	3
		<b>ENCL</b>	ODP	<b>CC</b>	010A
<b>HTR-VOLTS</b>		<b>HTR-AMPS</b>		<b>HTR-WATTS</b>	

**AC Induction Motor Performance Data**

Record # 58305

Typical performance - not guaranteed values

Winding: 39WGX990-R001		Type: 3936M	Enclosure: OPSB		
<b>Nameplate Data</b>			<b>575 V, 60 Hz: Single Voltage Motor</b>		
Rated Output (HP)	30	Full Load Torque	44.9 LB-FT		
Volts	575	Start Configuration	direct on line		
Full Load Amps	28	Breakdown Torque	157 LB-FT		
R.P.M.	3505	Pull-up Torque	47.7 LB-FT		
Hz	60	Phase	3	Locked-rotor Torque	67.4 LB-FT
NEMA Design Code	B	KVA Code	G	Starting Current	171 A
Service Factor (S.F.)	1.15		No-load Current	8.18 A	
NEMA Nom. Eff.	91	Power Factor	89	Line-line Res. @ 25°C	0.548 Ω
Rating - Duty	40C AMB-CONT		Temp. Rise @ Rated Load	36°C	
S.F. Amps			Temp. Rise @ S.F. Load	44°C	
			Locked-rotor Power Factor	29.2	
			Rotor inertia	0.92 LB-FT <sup>2</sup>	

**Load Characteristics 575 V, 60 Hz, 30 HP**

% of Rated Load	25	50	75	100	125	150	S.F.
Power Factor	61	82	87	89	89	88	89
Efficiency	89.4	92.3	92.6	91.6	90.5	88.9	91
Speed	3578	3556	3533	3508	3481	3450	3492
Line amperes	10.4	15.1	21	27.5	34.5	42.3	31.7

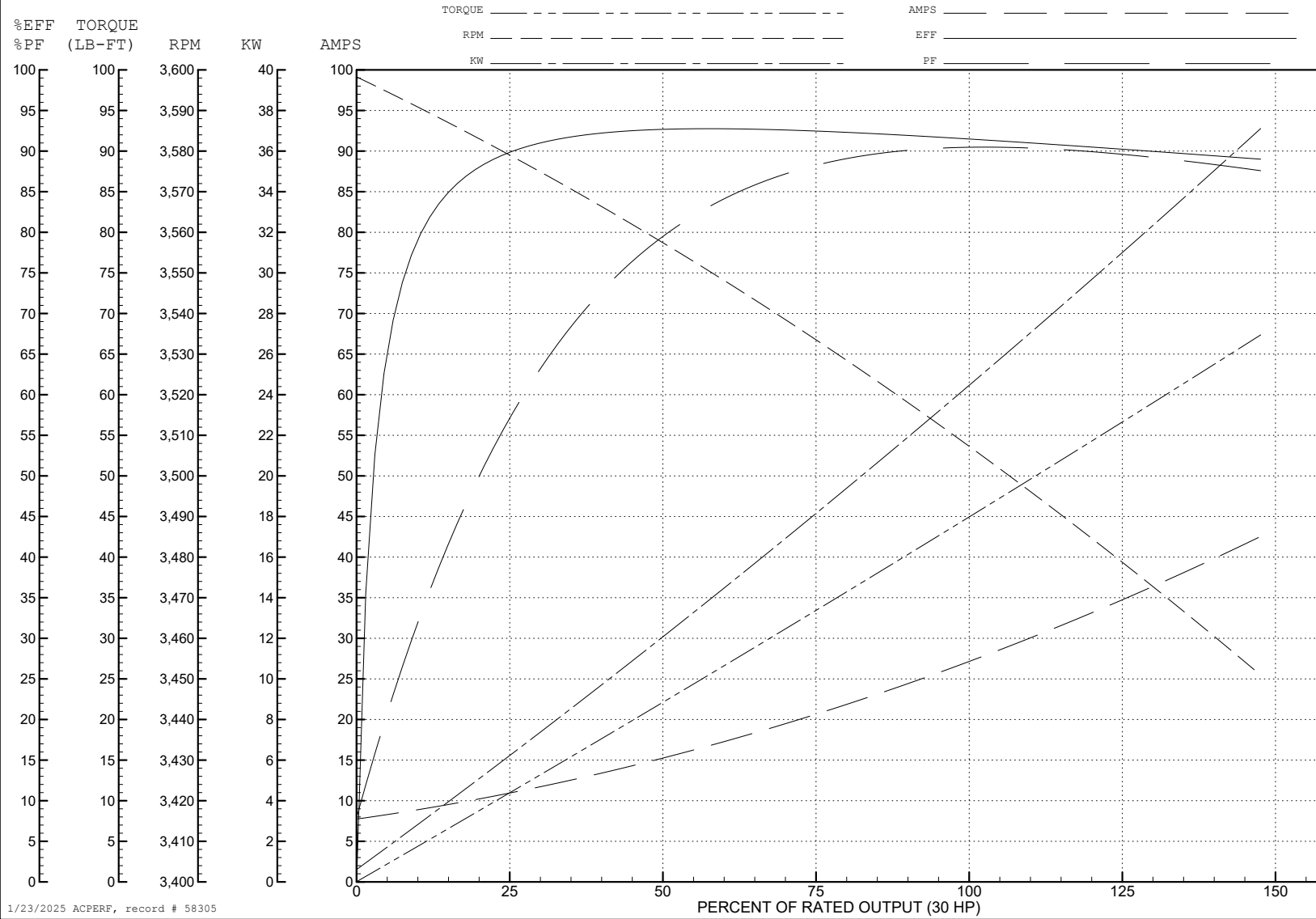
ABB Motors and Mechanical Inc.

WINDING # 39WGX990

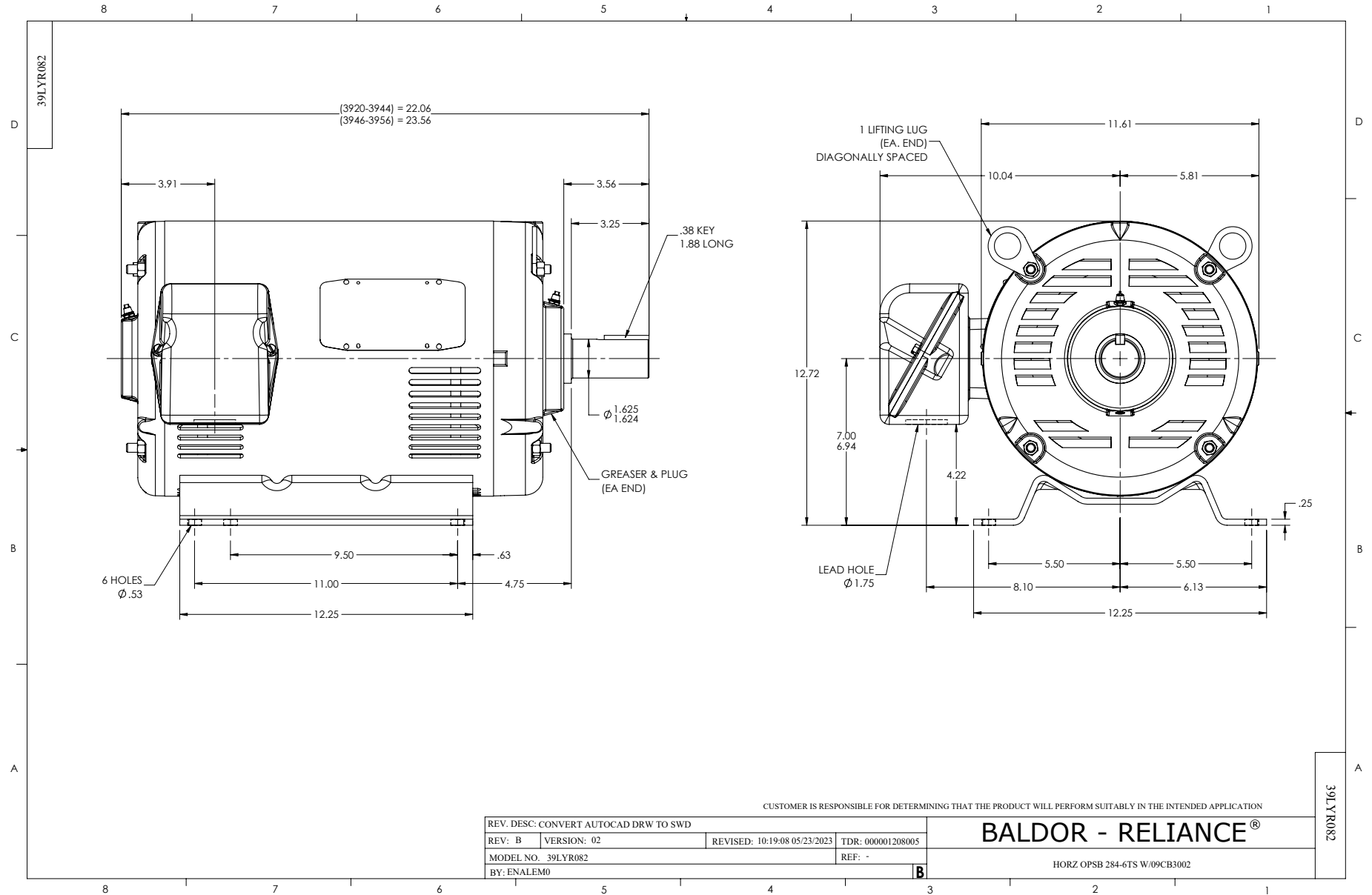
30 HP 3 PH 60 HZ 3505 RPM 575 V 3936M

Typical performance - not guaranteed values.

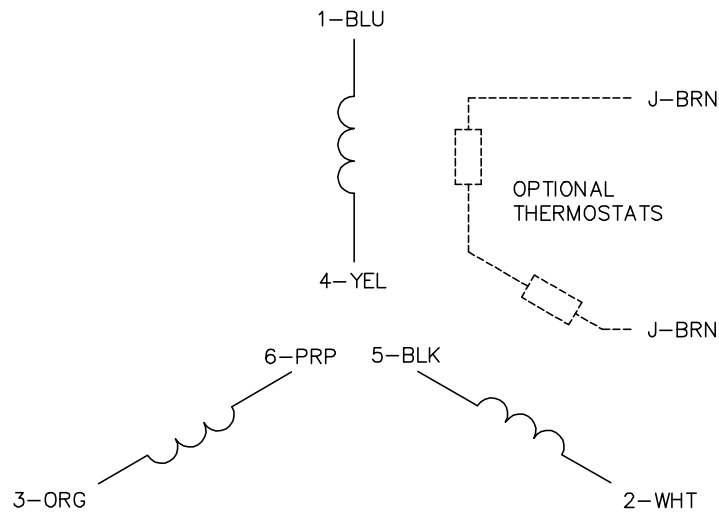
TORQUES (LB-FT): PO=157 PU=47.7 LR=67.4 LRA=171



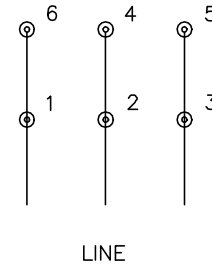
1/23/2025 ACPERF, record # 58305



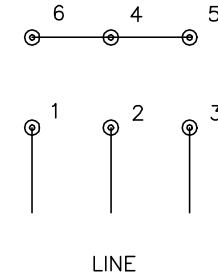
CD0382



RUN CONNECTION (1D)



START CONNECTION (1Y)



NOTES:

1. INTERCHANGE ANY TWO LINE LEADS TO REVERSE ROTATION.
2. OPTIONAL THERMOSTATS ARE PROVIDED WHEN SPECIFIED.
3. ACTUAL NUMBER OF INTERNAL PARALLEL CIRCUITS MAY BE A MULTIPLE OF THOSE SHOWN ABOVE.
4. LEAD COLORS ARE OPTIONAL. LEADS MUST ALWAYS BE NUMBERED AS SHOWN.
5. FOR ACROSS-THE-LINE STARTING, USE 'RUN' CONNECTION.

CD0382

REV. DESC: ADD CLASS CONN00000007		
REV. LTR: F	VERSION: 01	TDR: 000001099922
FILE: \AAA\00005\243	REVISED: 09:05:32 02/19/2019	BY: ENBRIRO
MTL: -	© □	

**BALDOR - RELIANCE®**

3PH, SV, 6 LEADS, Y START/D RUN

SH 1 of 1